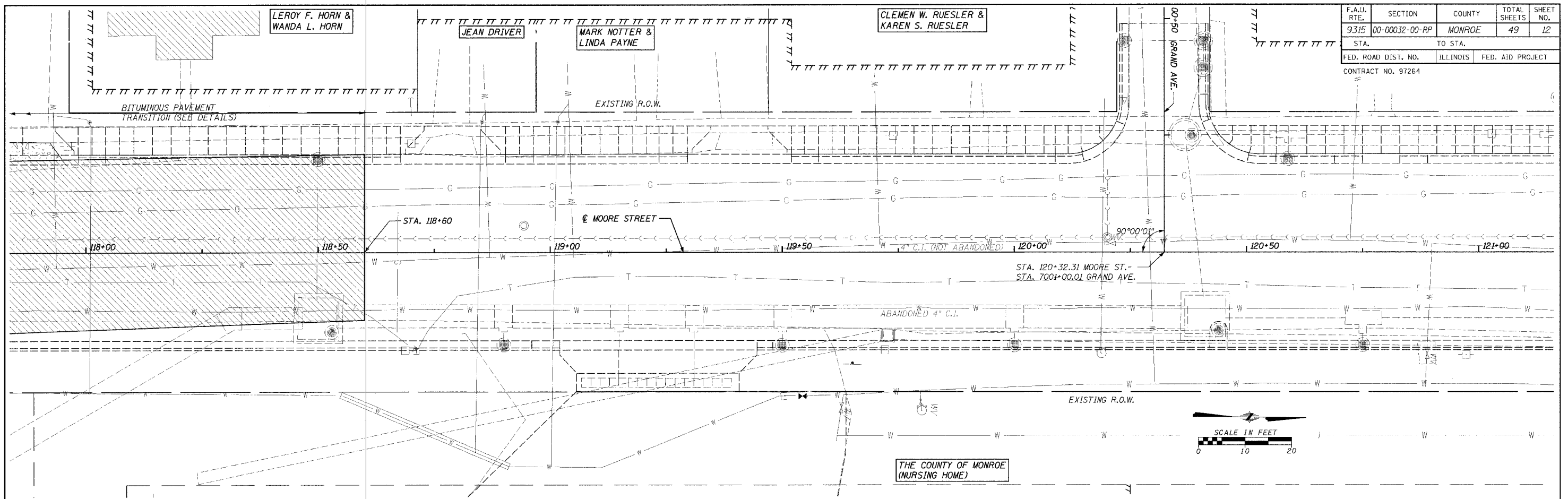


F.A.P. RTE.	SECTION	COUNTY	TOTAL SHEETS	SHEET NO.
9315	00-00032-00-RP	MONROE	49	12
STA. 9315		TO STA.		
FED. ROAD DIST. NO.		ILLINOIS	FED. AID PROJECT	
CONTRACT NO. 97264				



PLAN

DATE: _____

BY: _____

DESIGNED BY: _____

CHECKED BY: _____

IN CHARGE: _____

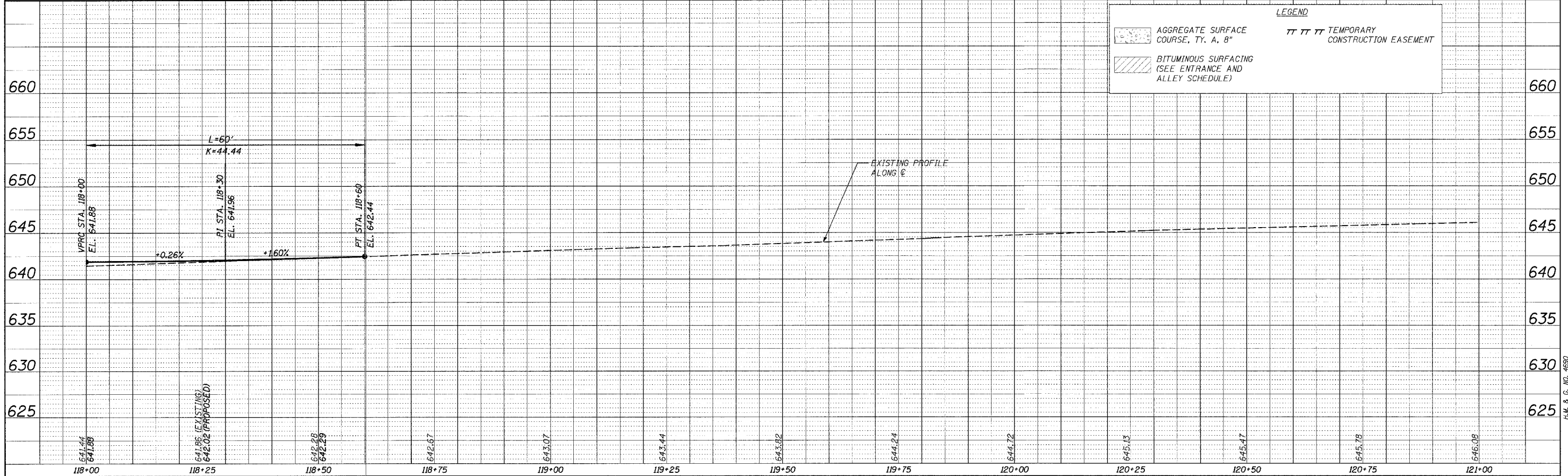
DATE: _____

BY: _____

DESIGNED BY: _____

CHECKED BY: _____

IN CHARGE: _____



LEGEND

	AGGREGATE SURFACE COURSE, TY. A, 8"		TEMPORARY CONSTRUCTION EASEMENT
	BITUMINOUS SURFACING (SEE ENTRANCE AND ALLEY SCHEDULE)		

PROFILE

DATE: _____

BY: _____

DESIGNED BY: _____

CHECKED BY: _____

IN CHARGE: _____

DATE: _____

BY: _____

DESIGNED BY: _____

CHECKED BY: _____

IN CHARGE: _____

CADD FILE: 14690\FBPF74690.DGN
PLOTTED: 10/24/2005