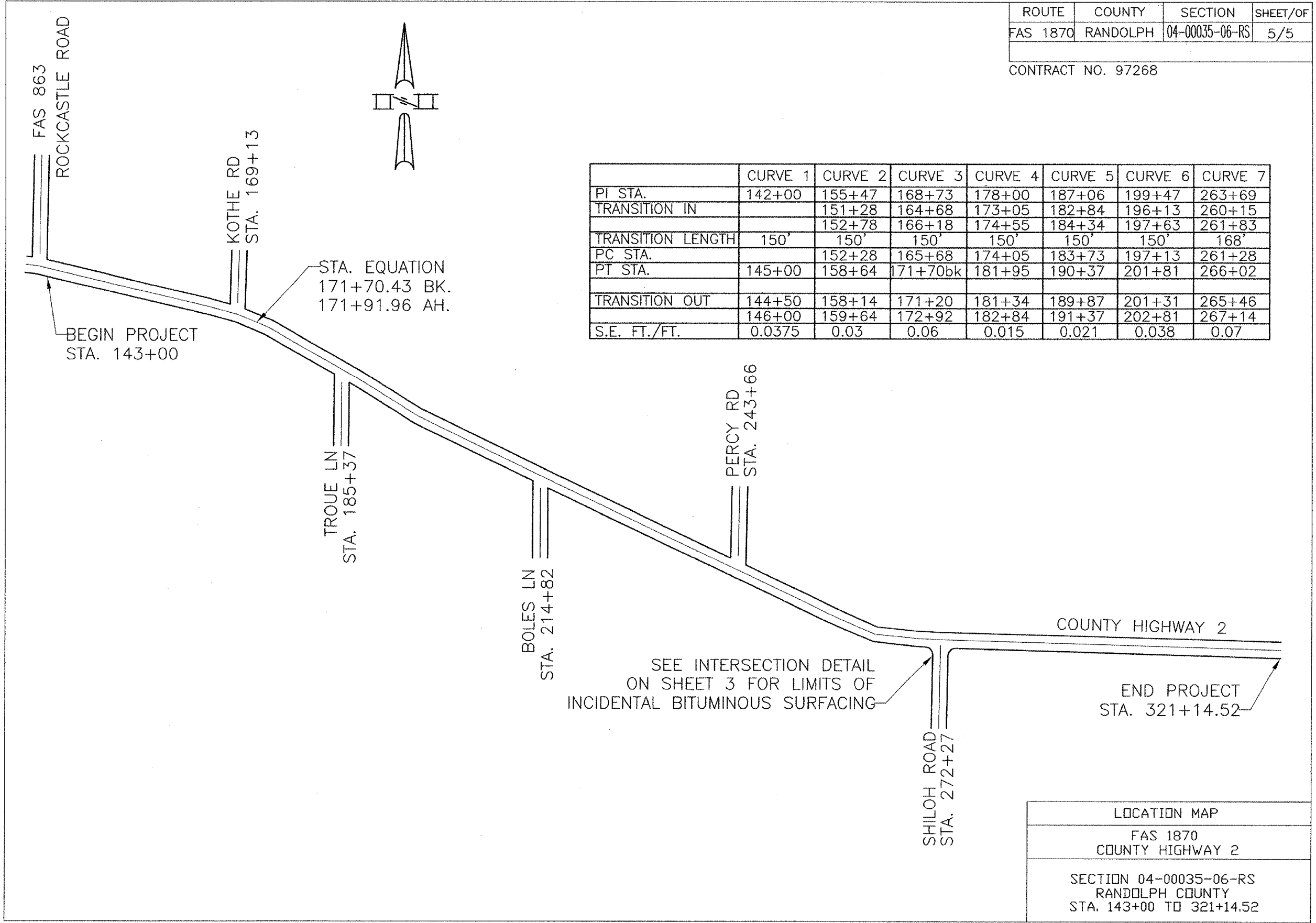


ROUTE	COUNTY	SECTION	SHEET/OF
FAS 1870	RANDOLPH	04-00035-06-RS	5/5

CONTRACT NO. 97268

	CURVE 1	CURVE 2	CURVE 3	CURVE 4	CURVE 5	CURVE 6	CURVE 7
PI STA.	142+00	155+47	168+73	178+00	187+06	199+47	263+69
TRANSITION IN		151+28	164+68	173+05	182+84	196+13	260+15
		152+78	166+18	174+55	184+34	197+63	261+83
TRANSITION LENGTH	150'	150'	150'	150'	150'	150'	168'
PC STA.		152+28	165+68	174+05	183+73	197+13	261+28
PT STA.	145+00	158+64	171+70bk	181+95	190+37	201+81	266+02
TRANSITION OUT	144+50	158+14	171+20	181+34	189+87	201+31	265+46
	146+00	159+64	172+92	182+84	191+37	202+81	267+14
S.E. FT./FT.	0.0375	0.03	0.06	0.015	0.021	0.038	0.07



LOCATION MAP
FAS 1870 COUNTY HIGHWAY 2
SECTION 04-00035-06-RS RANDOLPH COUNTY STA. 143+00 TO 321+14.52