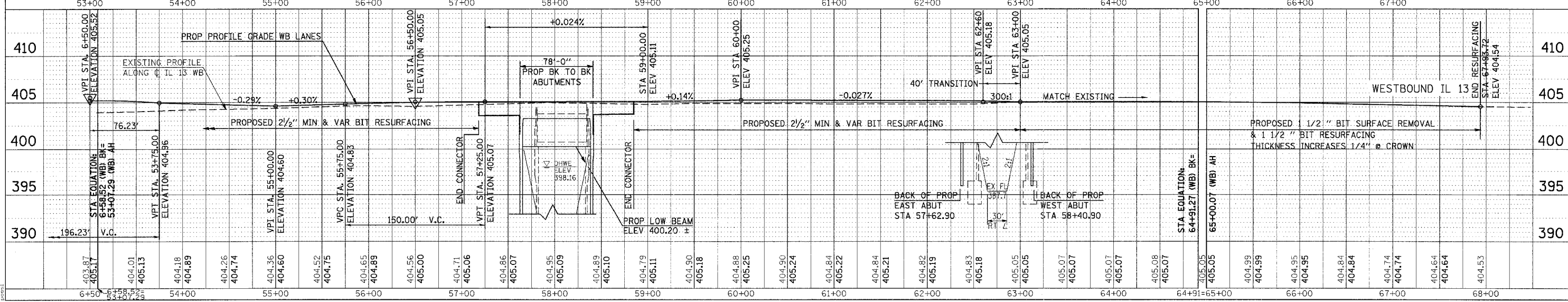
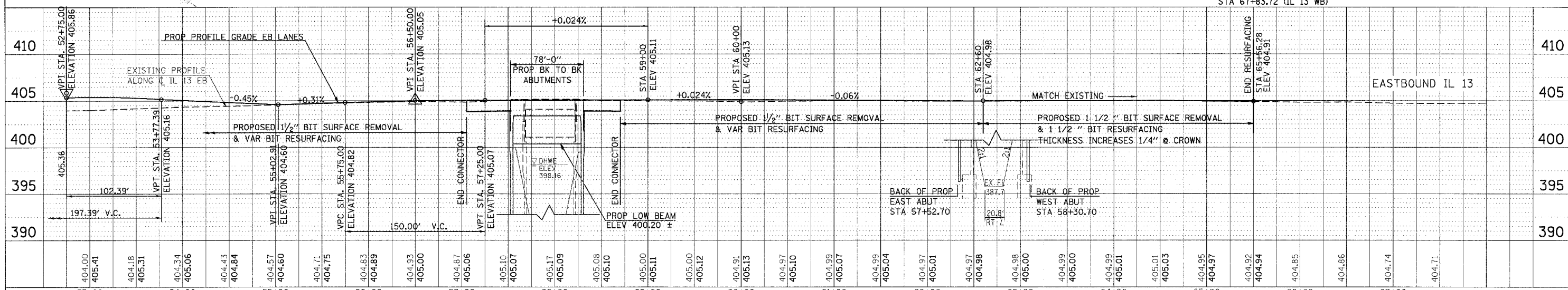
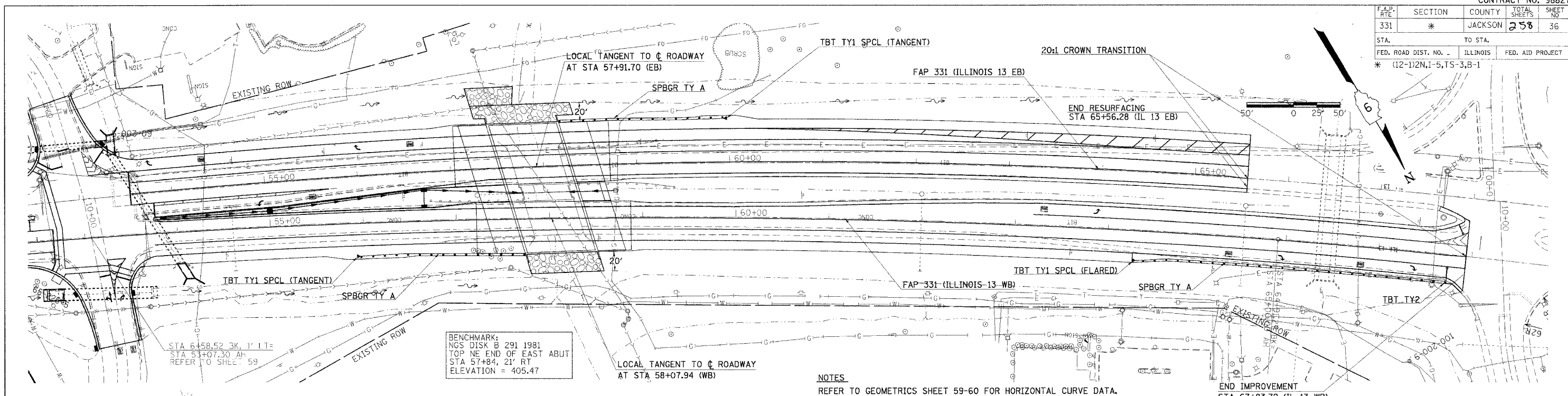


F.A.P. RTE	SECTION	COUNTY	TOTAL SHEETS	SHEET NO
331	*	JACKSON	258	36
STA. TO STA.		ILLINOIS		
FED. ROAD DIST. NO. -		FED. AID PROJECT		
* (12-1)2N, I-5, TS-3, B-1				



PLAN PROFILE - IL 13 EB & WB STA 53+00.00 TO 68+00.00