

F.A.P. RTE	SECTION	COUNTY	TOTAL SHEETS	SHEET NO
331	*	JACKSON	258	37
STA. TO STA.		ILLINOIS FED. AID PROJECT		
* (12-1)2N, I-5, TS-3, B-1				

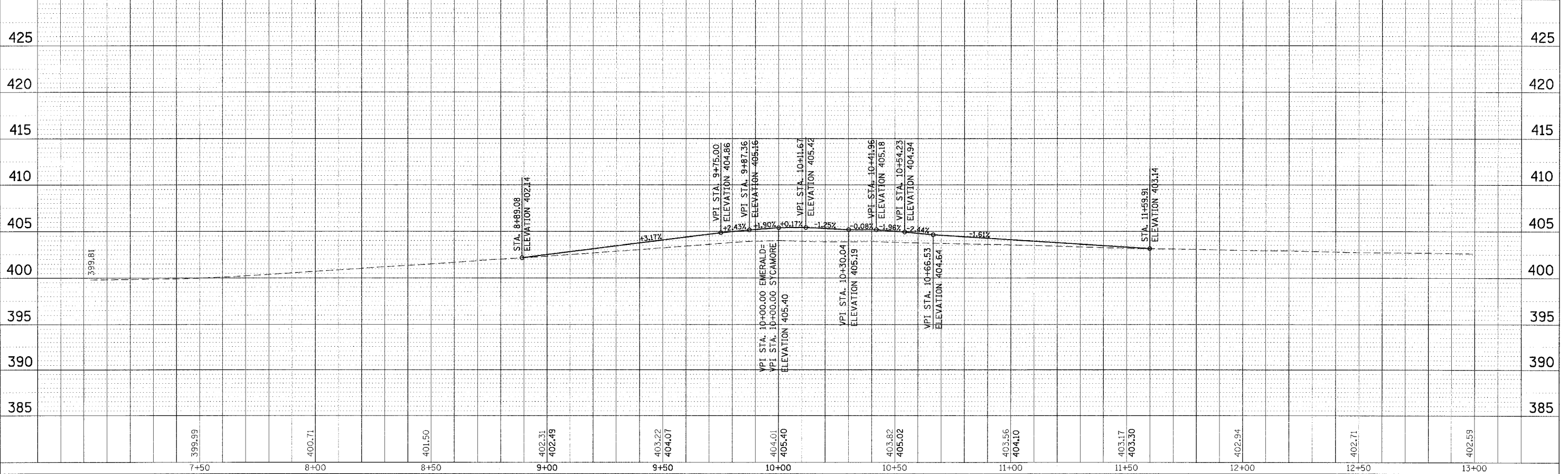
STA	24' RT	X-SLOPE	12' RT	X-SLOPE	CL	X-SLOPE	12' LT
9+75.00	(IL 13)	(IL 13)	(IL 13)	(IL 13)	404.86	0.6%	404.79
9+65.00	404.63	0.3%	404.60	0.5%	404.54	0.7%	404.46
9+55.00	404.27	0.1%	404.28	0.4%	404.23	0.8%	404.13
9+45.00	403.92	0.3%	403.95	0.3%	403.91	0.9%	403.80
9+35.00	403.56	0.6%	403.63	0.3%	403.59	1.0%	403.47
9+25.00	403.20	0.8%	403.30	0.3%	403.27	1.1%	403.14
9+15.00	402.95	1.1%	402.98	0.3%	402.95	1.3%	402.80
9+05.00	402.49	1.4%	402.66	0.2%	402.64	1.4%	402.47
8+95.00	402.13	1.7%	402.33	0.1%	402.32	1.5%	402.14
8+89.08	401.92	1.8%	402.14	0.0%	402.14	1.7%	401.94

STA	12' RT	X-SLOPE	CL	X-SLOPE	12' LT
10+70	404.53	0.4%	404.58	0.2%	404.60
10+80	404.34	0.7%	404.42	0.3%	404.46
10+90	404.15	0.9%	404.26	0.5%	404.32
11+00	403.96	1.2%	404.10	0.7%	404.18
11+10	403.77	1.4%	403.94	0.8%	404.04
11+20	403.59	1.6%	403.78	1.0%	403.90
11+30	403.40	1.8%	403.61	1.3%	403.76
11+40	403.21	2.0%	403.45	1.4%	403.62
11+50	403.02	2.2%	403.29	1.6%	403.48
11+59.91	402.83	2.3%	403.14	1.7%	403.34

DATE: \_\_\_\_\_ BY: \_\_\_\_\_  
 SUPERVISOR: \_\_\_\_\_  
 CHECKED: \_\_\_\_\_  
 DATE: \_\_\_\_\_ BY: \_\_\_\_\_

DATE: \_\_\_\_\_ BY: \_\_\_\_\_  
 SUPERVISOR: \_\_\_\_\_  
 CHECKED: \_\_\_\_\_  
 DATE: \_\_\_\_\_ BY: \_\_\_\_\_

2/15/2006  
 c:\p\proj\98827\98827.dgn  
 28.00000' / IN.  
 11.11.06



PLAN PROFILE - EMERALD LN / SYCAMORE RD