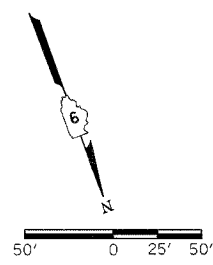
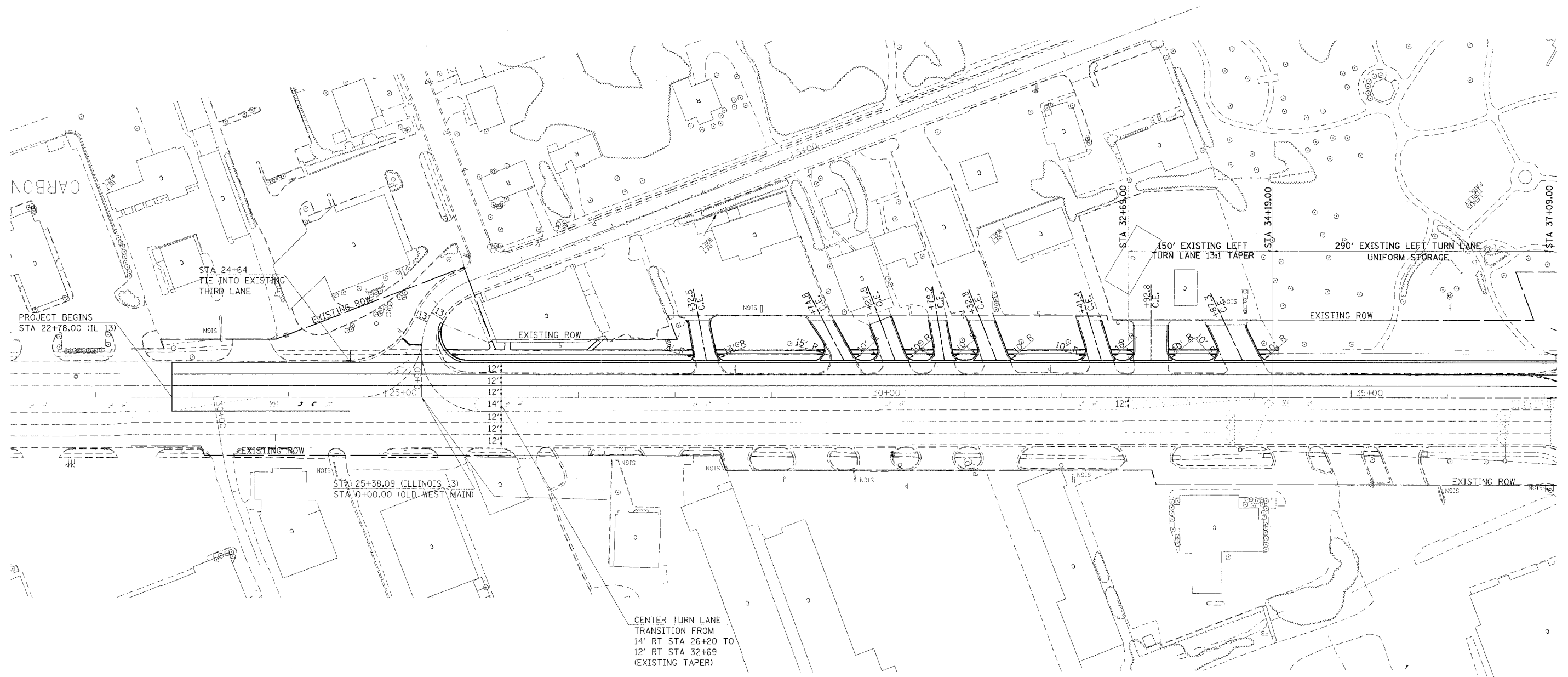


F.A.P. RTE.	SECTION	COUNTY	TOTAL SHEETS	SHEET NO.
331	*	JACKSON	258	57
STA.		TO STA.		
FED. ROAD DIST. NO.		ILLINOIS	FED. AID PROJECT	
* (12-1)2N, I-5, TS-3, B-1				



2/14/2005
 c:\prow\proj\98827\98827.dwg
 58.6206 / 11
 p001