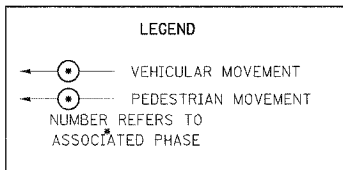
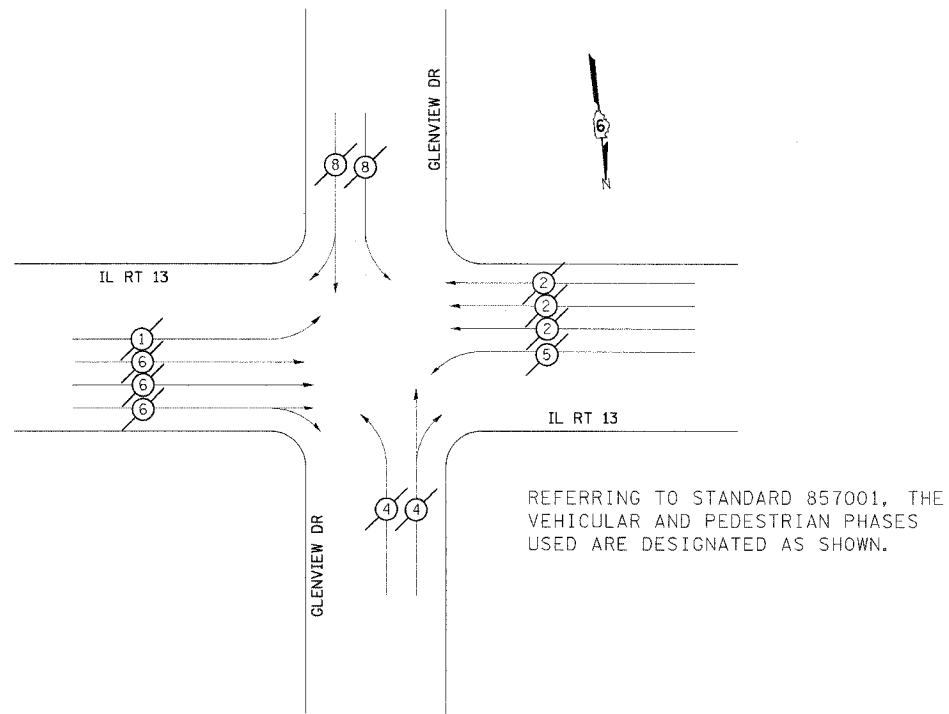


F.A.P. RTE.	SECTION	COUNTY	TOTAL SHEETS	SHEET NO.
331	*	JACKSON	225	78
STA.	TO STA.			
FED. ROAD DIST. NO.	ILLINOIS	FED. AID PROJECT		

*(12-1)2N,I-5,TS-3,B-1

PHASE DESIGNATION DIAGRAM IL RTE 13 WITH GLENVIEW DR



REFERRING TO STANDARD 857001, THE VEHICULAR AND PEDESTRIAN PHASES USED ARE DESIGNATED AS SHOWN.

DETAIL OF DETECTOR LOOPS

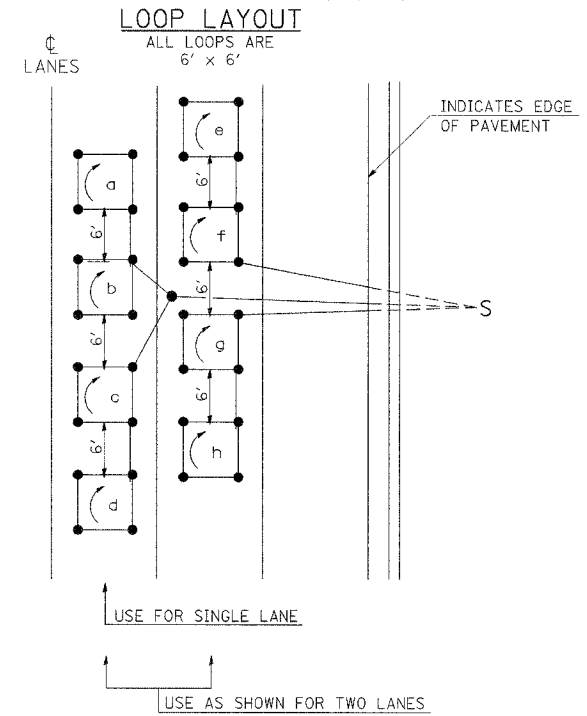
NOTES

(APPLIES TO 6' x 6' LOOPS ONLY)

1. THE DETECTOR LOOPS SHALL BE TYPE I. EACH DETECTOR LOOP SHALL HAVE 3 TURNS OF LOOP WIRE AND BE INSTALLED IN ACCORDANCE WITH THE APPLICABLE PORTIONS OF SECTION 886 OF THE STANDARD SPECIFICATIONS FOR TRAFFIC CONTROL ITEMS.
2. BEGINNING LEAD WIRES SHALL BE CONNECTED TO THE BLACK LEAD AND THE ENDING LEAD WIRES SHALL BE CONNECTED TO THE WHITE LEAD OF THE TWIN TWISTED FEED CABLES AT THE SPLICE POINT.
3. WHERE THE LOOPS ARE INSTALLED PRIOR TO RESURFACING, THE LOOP CORNERS SHALL BE DIAGONALLY CUT.

LOOP LEGEND

- ↻ CLOCKWISE ROTATION FOR LOOP WIRES
- S INDICATES SPLICE POINT FOR DETECTOR LOOP LEAD
- INDICATES 2" CORE-DRILL



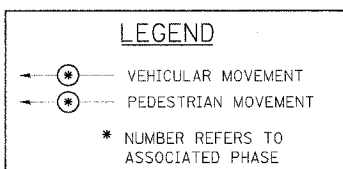
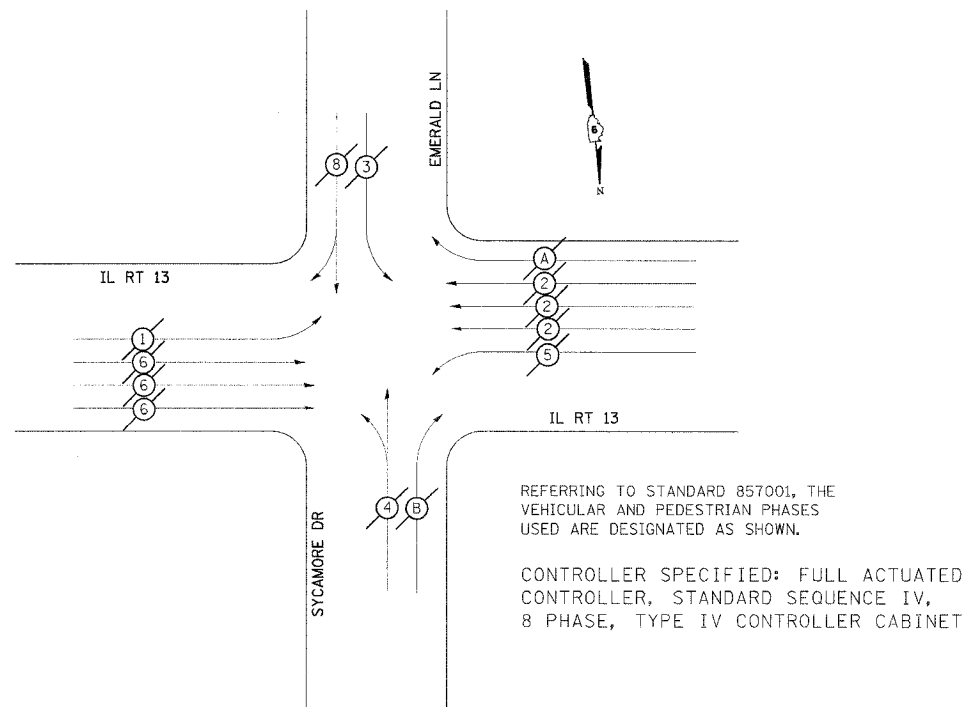
DETAIL 6' x 6' DETECTOR LOOPS

REVISIONS

REVISION	DATE
REVISION	DATE
REVISION	DATE

STD. 9-92

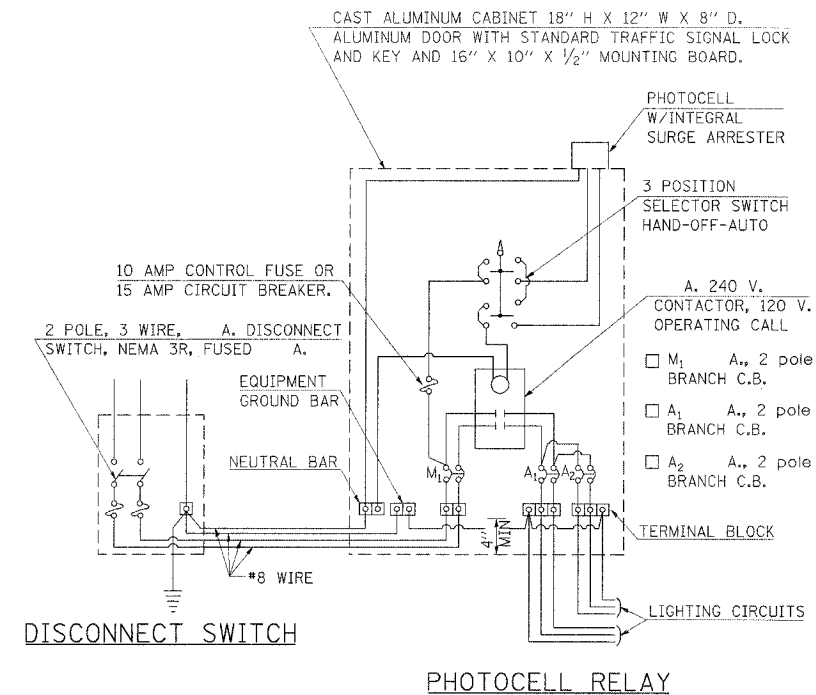
PHASE DESIGNATION DIAGRAM IL RTE 13 WITH EMERALD LNSYCAMORE ST



REFERRING TO STANDARD 857001, THE VEHICULAR AND PEDESTRIAN PHASES USED ARE DESIGNATED AS SHOWN.

CONTROLLER SPECIFIED: FULL ACTUATED CONTROLLER, STANDARD SEQUENCE IV, 8 PHASE, TYPE IV CONTROLLER CABINET

CONTROL INSTALLATION SIGNAL CABINET MOUNTED



PHOTOCELL RELAY

REVISIONS

REVISION	DATE
REVISION	DATE
REVISION	DATE

STD. 9-113

REVISIONS

REVISION	DATE
REVISION	DATE
REVISION	DATE

STD. 9-66

DETAILS: PHASE DESIGNATION DIAGRAMS, DETAIL OF DETECTOR LOOPS CONTROL INSTALLATION SIGNAL CABINET MOUNTED