

F.A.P. RTE.	SECTION	COUNTY	TOTAL SHEETS	SHEET NO.
331	*	JACKSON	258	88

STA.	TO STA.	FED. ROAD DIST. NO.	ILLINOIS	FED. AID PROJECT
				* (12-1)2N, I-5, TS-3, B-1

W2-1115(0)-3618
W2-1113(0)-3612
W2-1106-3618

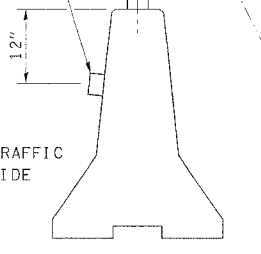
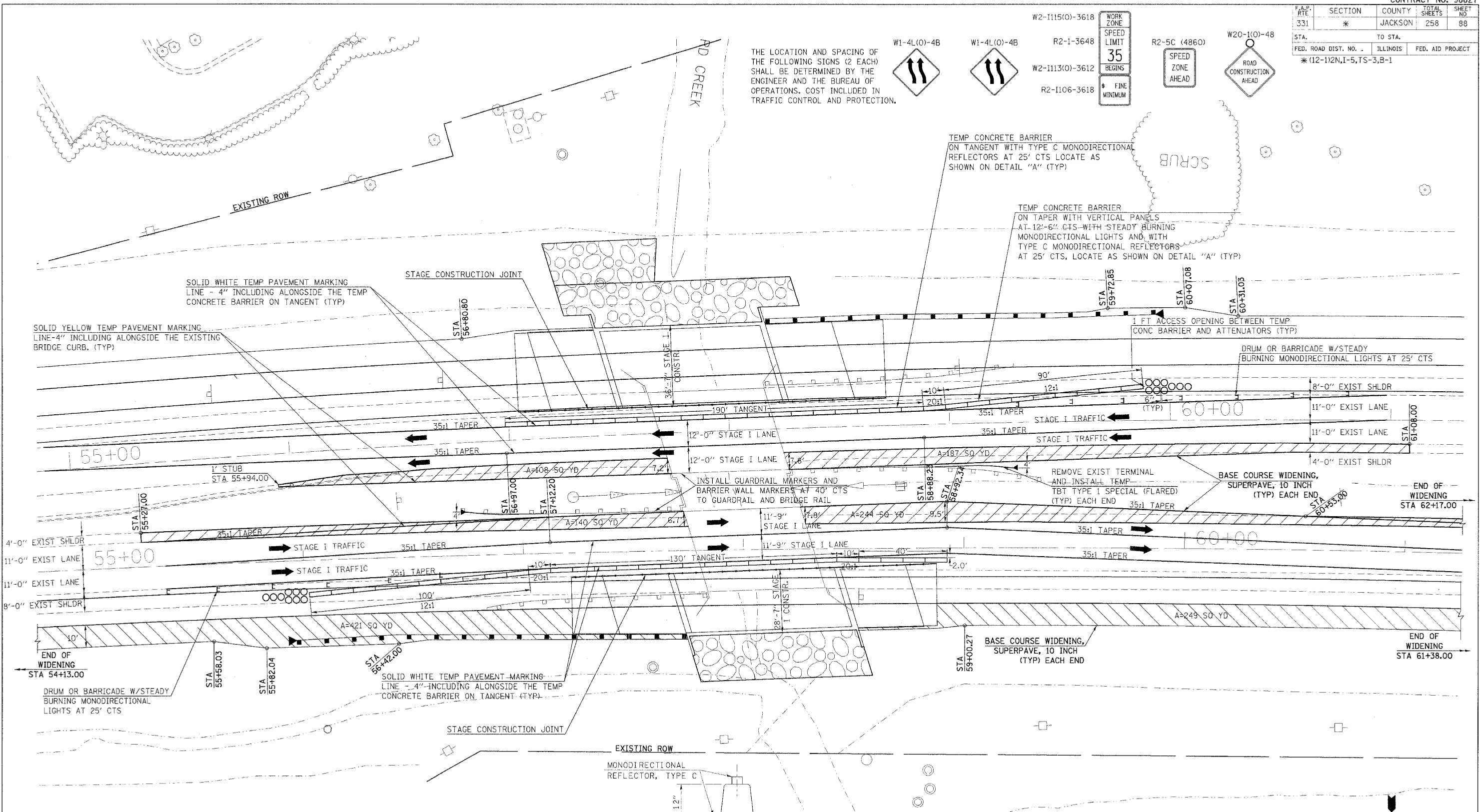
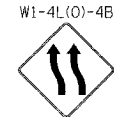
WORK ZONE SPEED LIMIT 35 BEGINS FINE MINIMUM

R2-1-3648
R2-1106-3618

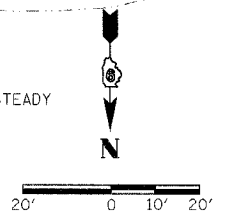
R2-5C (4860)
SPEED ZONE AHEAD

W20-1(0)-48
ROAD CONSTRUCTION AHEAD

THE LOCATION AND SPACING OF THE FOLLOWING SIGNS (2 EACH) SHALL BE DETERMINED BY THE ENGINEER AND THE BUREAU OF OPERATIONS. COST INCLUDED IN TRAFFIC CONTROL AND PROTECTION.



NOTE:
COST OF ALL SIGNS, DRUMS OR BARRICADES, VERTICAL PANELS, STEADY BURNING MONODIRECTIONAL LIGHTS AND TYPE C MONODIRECTIONAL REFLECTORS INCLUDED IN TRAFFIC CONTROL AND PROTECTION.



W20-1(0)-48
ROAD CONSTRUCTION AHEAD

R2-5C (4860)
SPEED ZONE AHEAD

WORK ZONE SPEED LIMIT 35 BEGINS FINE MINIMUM

W2-1115(0)-3618
W2-1-3648
W2-1113(0)-3612
W2-1106-3618

W1-4L(0)-4B

W1-4L(0)-4B

THE LOCATION AND SPACING OF THE FOLLOWING SIGNS (2 EACH) SHALL BE DETERMINED BY THE ENGINEER AND THE BUREAU OF OPERATIONS. COST INCLUDED IN TRAFFIC CONTROL AND PROTECTION.

STAGE I BRIDGE TRAFFIC CONTROL

2/17/2006
c:\projects\9804403\9804403.dcn
20.0200 / / IN.
cornellm