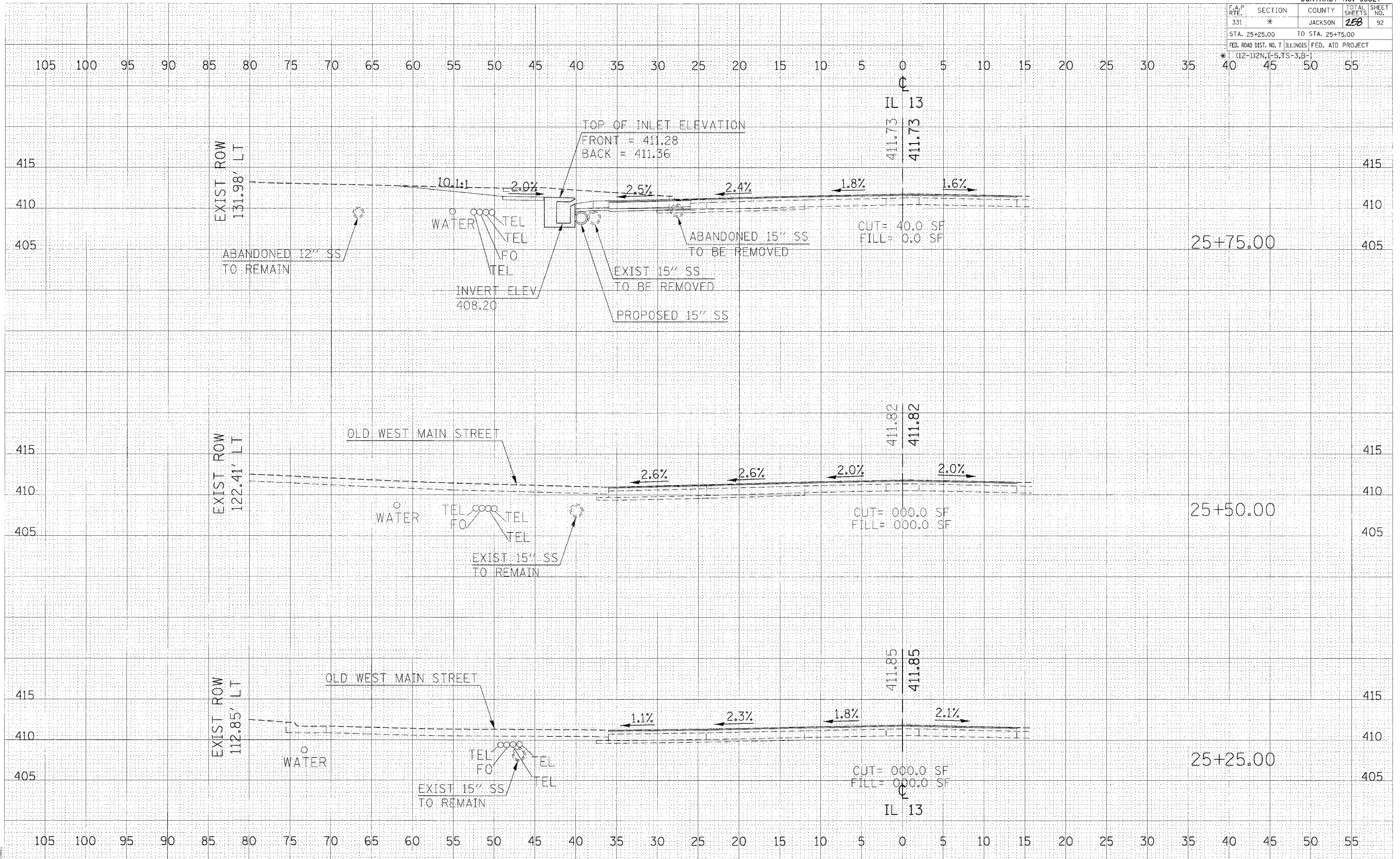


F.A.P. RTE.	SECTION	COUNTY	TOTAL SHEETS	SHEET NO.
331	*	JACKSON	258	92
STA. 25+25.00		TO STA. 25+75.00		
FED. ROAD DIST. NO. 7 ILLINOIS FED. AID PROJECT				

\* (12-1)2N,1-5,TS-3,B-1



DATE: \_\_\_\_\_ BY: \_\_\_\_\_

FINAL SURVEY: \_\_\_\_\_

NOTE BOOK: \_\_\_\_\_

NO. \_\_\_\_\_

DATE: \_\_\_\_\_ BY: \_\_\_\_\_

ORIGINAL SURVEY: \_\_\_\_\_

NOTE BOOK: \_\_\_\_\_

NO. \_\_\_\_\_

2/13/2006  
 c:\p\proj\c\4483\work\13.dgn  
 5:00:08 / IN