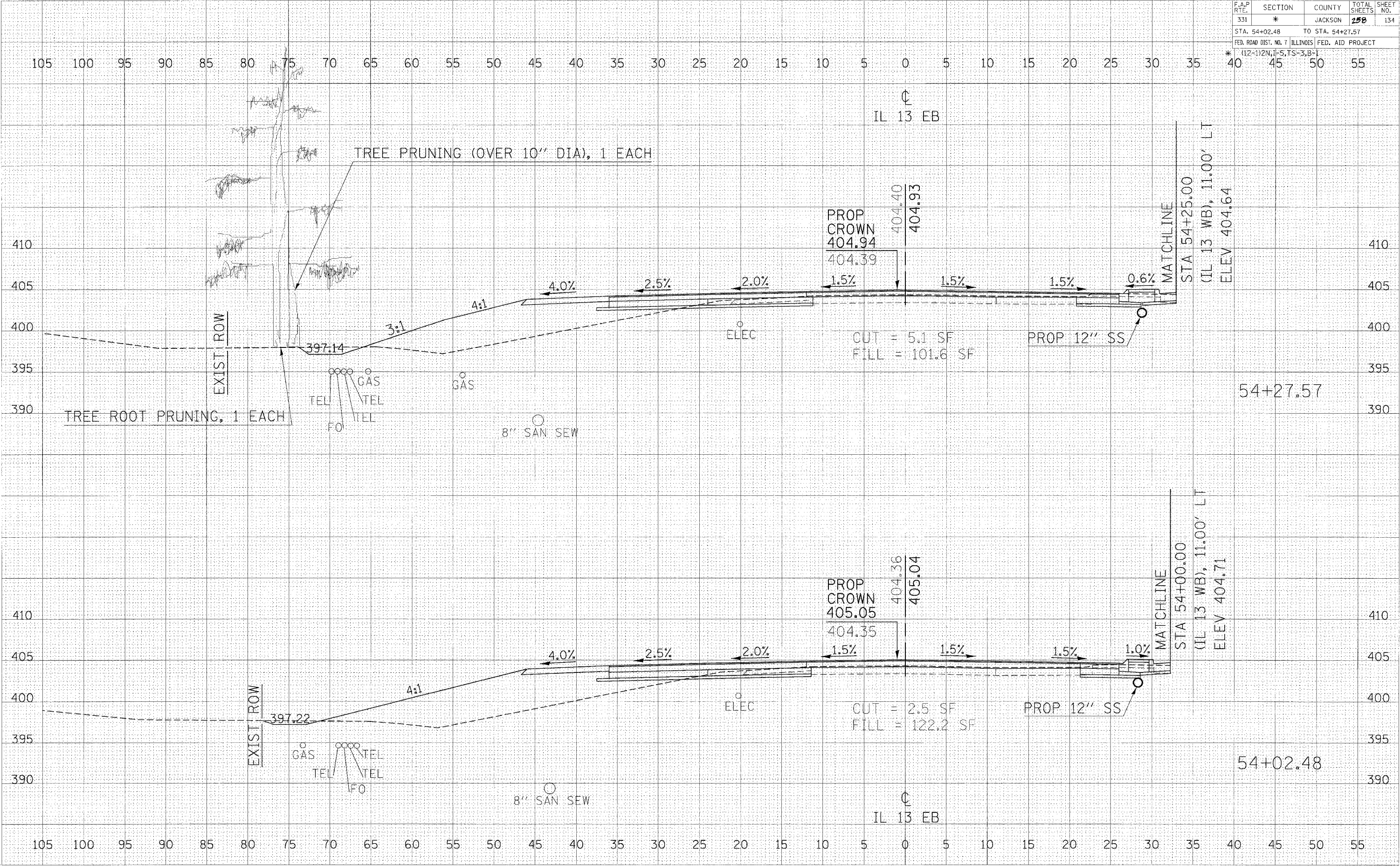


F.A.P. RTE.	SECTION	COUNTY	TOTAL SHEETS	SHEET NO.
331	*	JACKSON	258	134
STA. 54+02.48 TO STA. 54+27.57				
FED. ROAD DIST. NO. 7 ILLINOIS FED. AID PROJECT				
* (12-1)2N, I-5, TS-3, B-1				

DATE	
BY	
DESIGNED	
CHECKED	
IN CHARGE	
APPROVED	
DATE	
BY	
DESIGNED	
CHECKED	
IN CHARGE	
APPROVED	

DATE	
BY	
DESIGNED	
CHECKED	
IN CHARGE	
APPROVED	
DATE	
BY	
DESIGNED	
CHECKED	
IN CHARGE	
APPROVED	

2/15/2006  
 c:\projects\98827\p014023\shp\p014023.dgn  
 5:00:00 / 31  
 panel1



CROSS SECTIONS - IL 13 EB