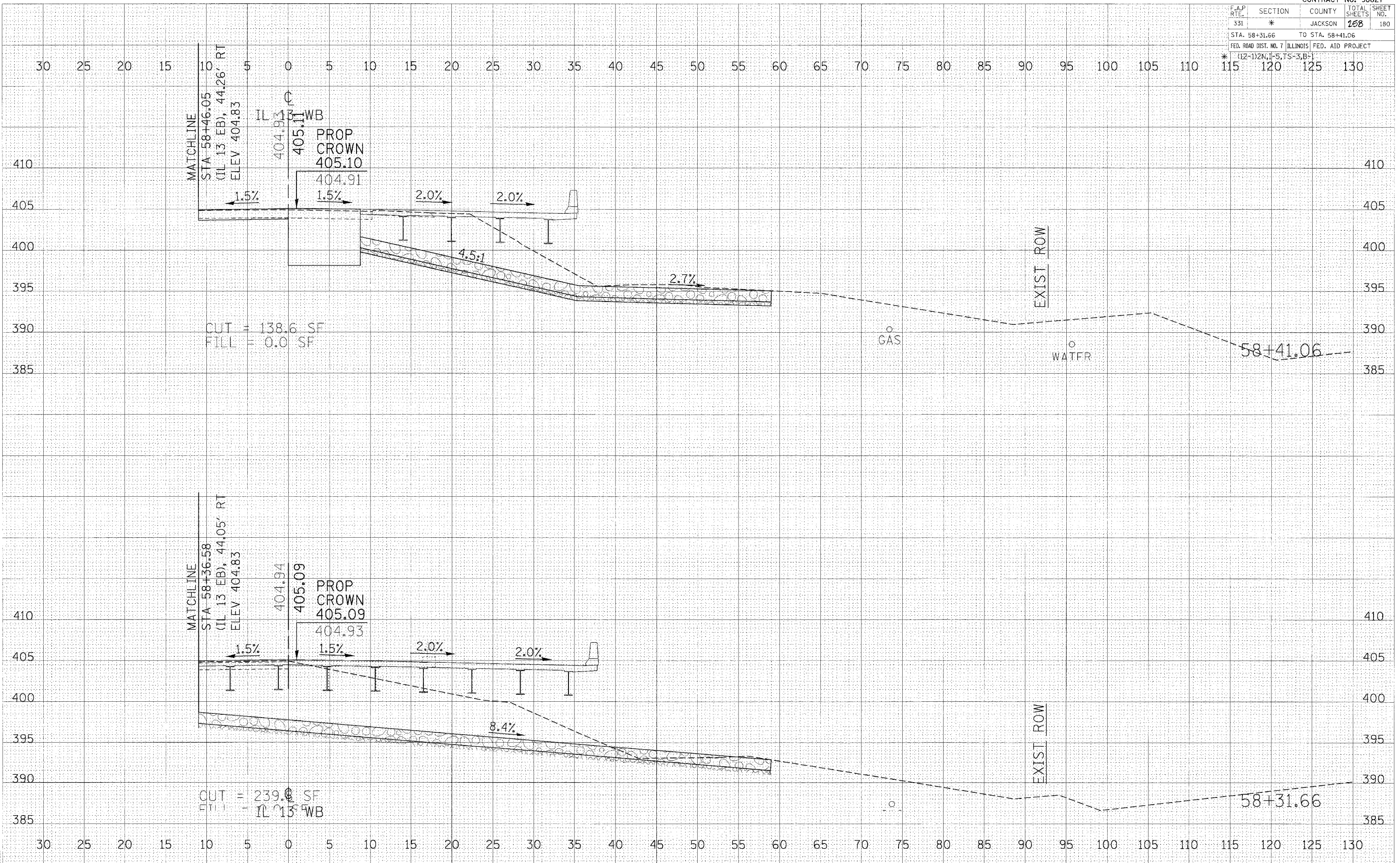


F.A.P. RTE.	SECTION	COUNTY	TOTAL SHEETS	SHEET NO.
331	*	JACKSON	158	180
STA. 58+31.66 TO STA. 58+41.06				
FED. ROAD DIST. NO. 7 ILLINOIS FED. AID PROJECT				
* (12-1)2N, I-5, TS-3, B-1				



DATE _____ BY _____
 SURVEYED _____
 PLOTTED _____
 NOTE BOOK _____
 AREAS CHECKED _____
 NO. _____

DATE _____ BY _____
 SURVEYED _____
 PLOTTED _____
 NOTE BOOK _____
 AREAS CHECKED _____
 NO. _____

2/15/2006
 c:\projects\98827\98827.dgn
 5.0000 / IN
 pbase

CROSS SECTIONS - IL 13 WB