

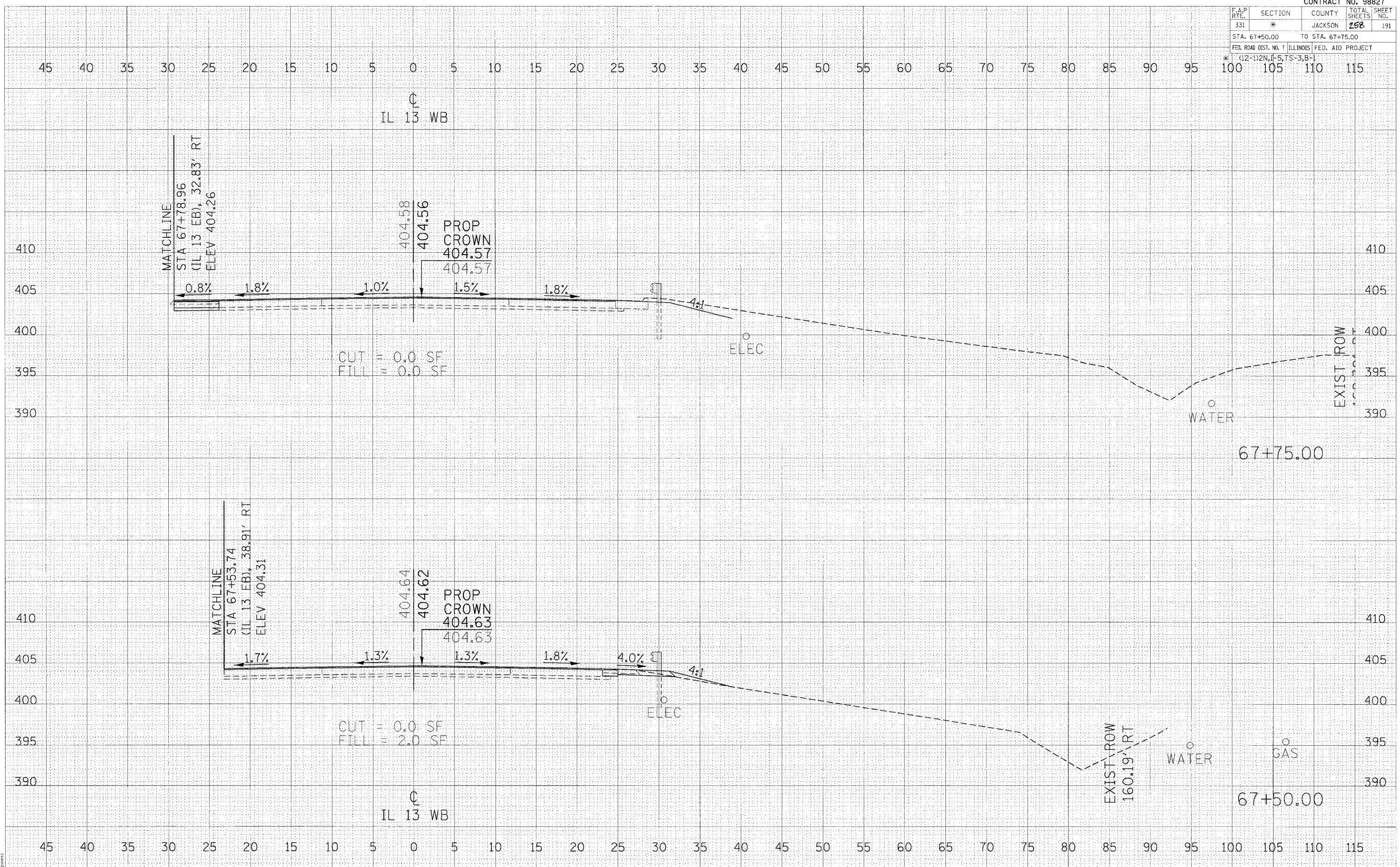
F.A.P. RTE.	SECTION	COUNTY	TOTAL SHEETS	SHEET NO.
331	*	JACKSON	258	191
STA. 67+50.00 TO STA. 67+75.00				
FED. ROAD DIST. NO. 7 ILLINOIS FED. AID PROJECT				

* (12-1)2N, I-5, TS-3, B-1

DATE	BY
DATE	BY
DATE	BY
DATE	BY

DATE	BY
DATE	BY
DATE	BY
DATE	BY

2/16/2005
 c:\paw\paw\198449\va\h1paw\paw.dgn
 10/11/05



CROSS SECTIONS - IL 13 WB