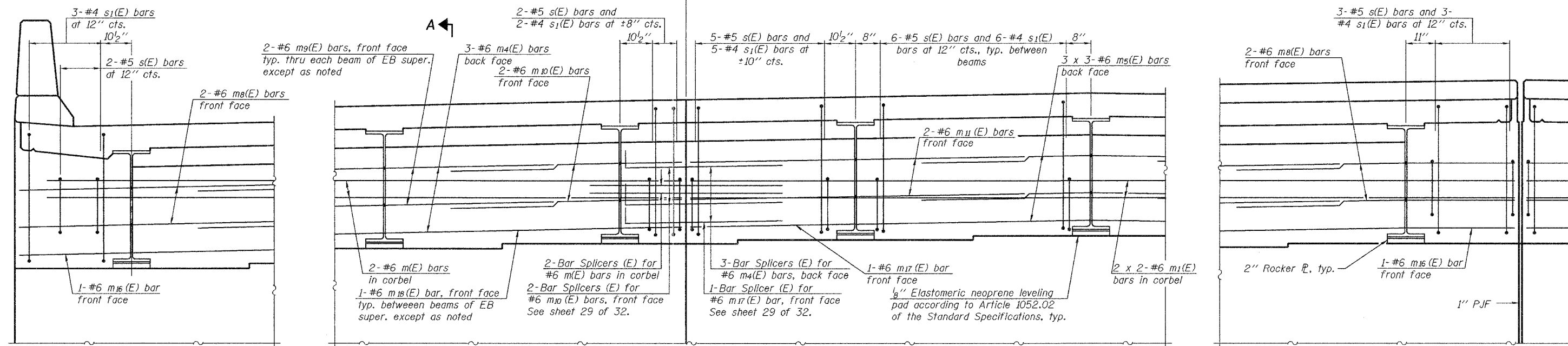


STATE OF ILLINOIS
DEPARTMENT OF TRANSPORTATION

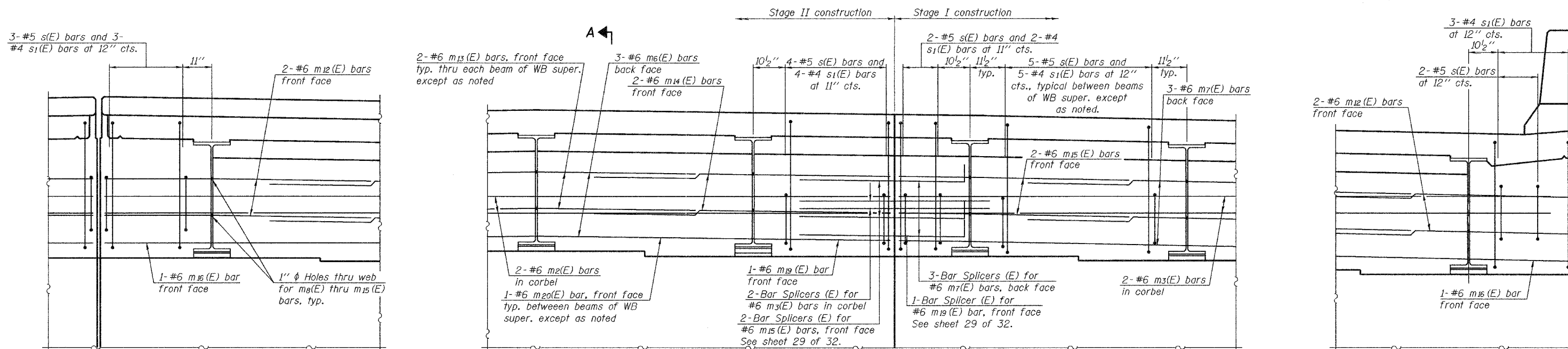
ROUTE NO.	SECTION	COUNTY	TOTAL SHEETS	SHEET NO.	SHEET NO. 16
F.A.P. 331	(12-1) B-1	JACKSON		241	32 SHEETS
FED. ROAD DIST. NO. 7	ILLINOIS	FED. AID PROJECT-			

Contract #98827



ELEVATION

Looking West at West diaphragm, Eastbound superstructure.
East diaphragm similar.



ELEVATION

Looking West at West diaphragm, Westbound superstructure.
East diaphragm similar.

Notes:
Reinforcement bars in diaphragm are billed with superstructure on sheet 15 of 32.
Concrete in diaphragm is included with Concrete Superstructure on sheet 15 of 32.
For details of bars s(E) & s₁(E) see sheet 15 of 32.
The s(E) and s₁(E) bars shall be placed parallel to the beams. Spacing for these bars shall be at right angles to the beams.
For anchor bolt details see sheet 20 of 32.
See sheet 19 of 32 for holes thru web for m₈(E) thru m₁₅(E) bars.
See sheet 29 of 32 for bar splicer details.
See sheet 17 of 32 for Section A-A.
Bars indicated thus 3 x 3-#6 etc. indicates 3 lines of bars with 3 lengths per line.

MINIMUM BAR LAP

(Diaphragms)
#6 bar = 2'-9"

DESIGNED	Curt M. Evoy
CHECKED	Rebecca L. Mitchell
DRAWN	Michael B. Mossman
CHECKED	C.M.E. / R.L.M.

EXAMINED	March 1, 2006	Thomas J. Domagala
PASSED		Ralph E. Anderson

DIAPHRAGM DETAILS
F.A.P. ROUTE 331 - SEC. (12-1)B-1
JACKSON COUNTY
STATION 57+91.70
STRUCTURE NO. 039-0071