

F.A.I. RTE.	SECTION	COUNTY	TOTAL SHEETS	SHEET NO.
57	*	**	7	1

* SECTION GPS MONUMENT SETTINGS FY06
 ** JEFFERSON AND WILLIAMSON COUNTIES

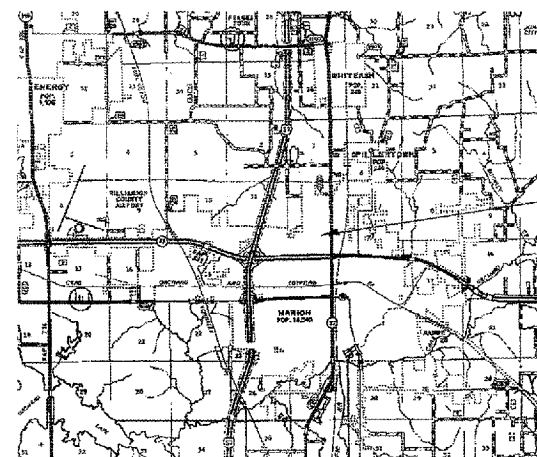
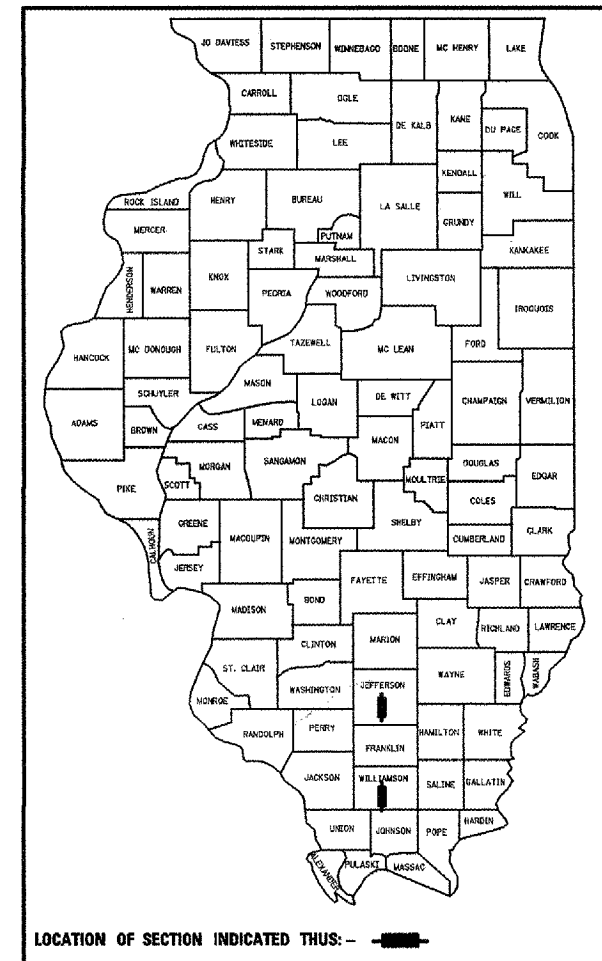
STATE OF ILLINOIS
 DEPARTMENT OF TRANSPORTATION
 DIVISION OF HIGHWAYS

**PROPOSED
 HIGHWAY PLANS**

FAI-57 (I-57)
 SECTION GPS MOUNUMENT SETTING FY-06
 PROJECT
 JEFFERSON & WILLIAMSON COUNTIES
 C-99-036-06

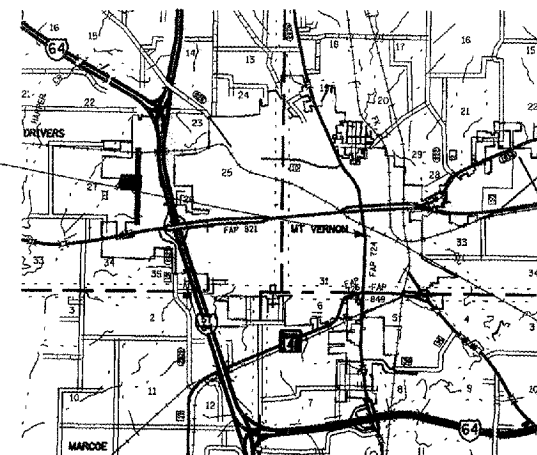
FOR INDEX OF SHEETS, SEE SHEET NO. 2

D-99-029-06



EAST MARION TOWNSHIP

PROPOSED GPS MONUMENT SETTING
 MARION MAINTENANCE YARD



MT. VERNON TOWNSHIP

PROPOSED GPS MONUMENT SETTING
 MT. VERNON MAINTENANCE YARD

STATE OF ILLINOIS
 DEPARTMENT OF TRANSPORTATION
 DIVISION OF HIGHWAYS

SUBMITTED *Feb 15 20 06*
Man C. Lami
 DEPUTY DIRECTOR OF HIGHWAYS, REGION ENGINEER

March 24 20 06
Mike Hume
 ENGINEER OF DESIGN AND ENVIRONMENT

March 24 20 06
Milton R. Sees, P.E.
 DIRECTOR OF HIGHWAYS, CHIEF ENGINEER

**PRINTED BY THE AUTHORITY
 OF THE STATE OF ILLINOIS**

J.U.L.I.E.
 JOINT UTILITY LOCATION INFORMATION FOR EXCAVATION
 1-800-892-0123

F.A.I. RTE.	SECTION	COUNTY	TOTAL SHEETS	SHEET NO.
57	*	**	7	2
STA.		TO STA.		
FED. ROAD DIST. NO.		ILLINOIS FED. AID PROJECT		
* SECTION GPS MONUMENT SETTINGS FY06				
** JEFFERSON AND WILLIAMSON COUNTIES				

INDEX OF SHEETS

SHEET NO.	DESCRIPTION
1	COVER SHEET
2	SUMMARY OF QUANTITIES & INDEX OF SHEETS
3	TYPICAL SITE INSTALL ELEVATION VIEW (FACING EAST)
4	DETAIL GPS PEDESTAL
5	FOUNDATION DETAIL
6	ANTENNA & POWER GPS PEDESTAL DETAIL
7	PEDESTAL LEVELING DETAILS

SUMMARY OF QUANTITIES

URBAN

100% STATE

CODE NUMBER	ITEM DESCRIPTION	UNIT	TOTAL QUANTITY	100% STATE	
				WILLIAMSON COUNTY	JEFFERSON COUNTY
X0322684	CONCRETE FOUNDATION, 30" DIA.	FOOT	48	24	24
X0325267	GPS ANTENNA PEDESTAL	EACH	4	2	2
X0325269	CORS SYSTEM	EACH	2	1	1
X0325270	RECEIVER - TRANSMITTER	EACH	2	1	1
X0325268	GPS WARRANTY, SOFTWARE MAINTENANCE AND TRAINING	LUMP SUM	1	0.5	0.5
X0325271	ELECTRIC CABLE IN CONDUIT, NO. 12 3C	FOOT	220	110	110
25000115	SEEDING, CLASS 1B	ACRE	0.2	0.1	0.1
25000400	NITROGEN FERTILIZER NUTRIENT	POUND	24	12	12
25000500	PHOSPHORUS FERTILIZER NUTRIENT	POUND	24	12	12
25000600	POTASSIUM FERTILIZER NUTRIENT	POUND	24	12	12
25000700	AGRICULTURAL GROUND LIMESTONE	TON	0.4	0.2	0.2
25100115	MULCH, METHOD 2	ACRE	0.2	0.1	0.1
67100100	MOBILIZATION	L SUM	1.0	0.5	0.5
81500200	TRENCH AND BACKFILL FOR ELECTRIC WORK	FOOT	200	100	100

Prepared By: *Joe Zdanewicz*
 DISTRICT STUDIES & PLANS ENGINEER

Examined By: *James Wois Emig*
 DISTRICT LAND ACQUISITION ENGINEER

Examined By: *Carie Nelson*
 DISTRICT PROGRAM DEVELOPMENT ENGINEER

Examined By: *John Stuehler*
 DISTRICT OPERATIONS ENGINEER

Examined By: *Joseph L...*
 DISTRICT CONSTRUCTION ENGINEER

Examined By: *B...*
 DISTRICT MATERIALS ENGINEER

Examined By: *Danny Clayton*
 DISTRICT PROJECT IMPLEMENTATION ENGINEER

Approved By: *May...*
 ASSISTANT REGIONAL ENGINEER

DEPUTY DIRECTOR OF HIGHWAYS, REGION ENGINEER

DATE: Feb 15 20 06

REVISIONS	
NAME	DATE

ILLINOIS DEPARTMENT OF TRANSPORTATION

SUMMARY OF QUANTITIES & INDEX OF SHEETS

SCALE: VERT. HORIZ.
 DATE

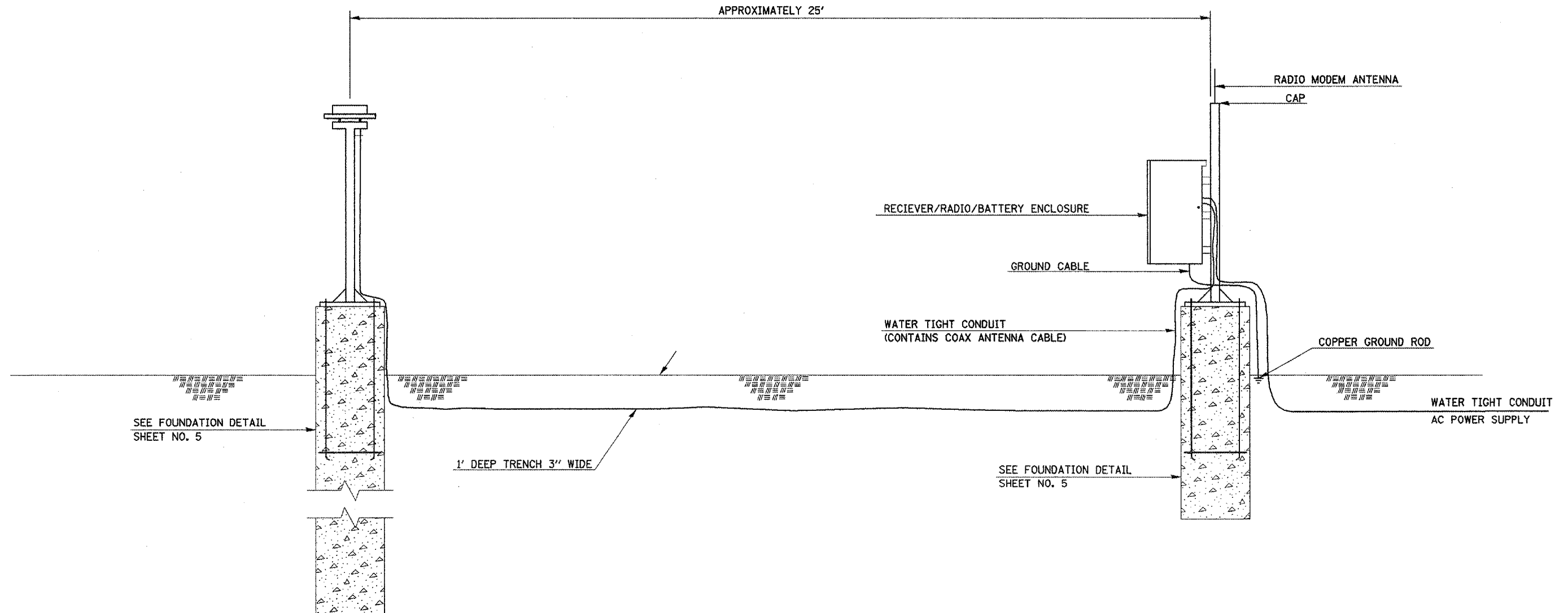
DRAWN BY
 CHECKED BY

Rev.

F.A.I. RTE.	SECTION	COUNTY	TOTAL SHEETS	SHEET NO.
ST	*	**	7	3
STA.		TO STA.		
FED. ROAD DIST. NO.		ILLINOIS FED. AID PROJECT		
• SECTION GPS MONUMENT SETTINGS FY06				
** JEFFERSON AND WILLIAMSON COUNTIES				

GPS CONFIGURATION

POWER/COMMUNICATION CONFIGURATION



PLOT DATE = 2/18/2006
 FILE NAME = c:\projects\1962988\1962988.plt
 USER NAME = hal@id

REVISIONS	
NAME	DATE

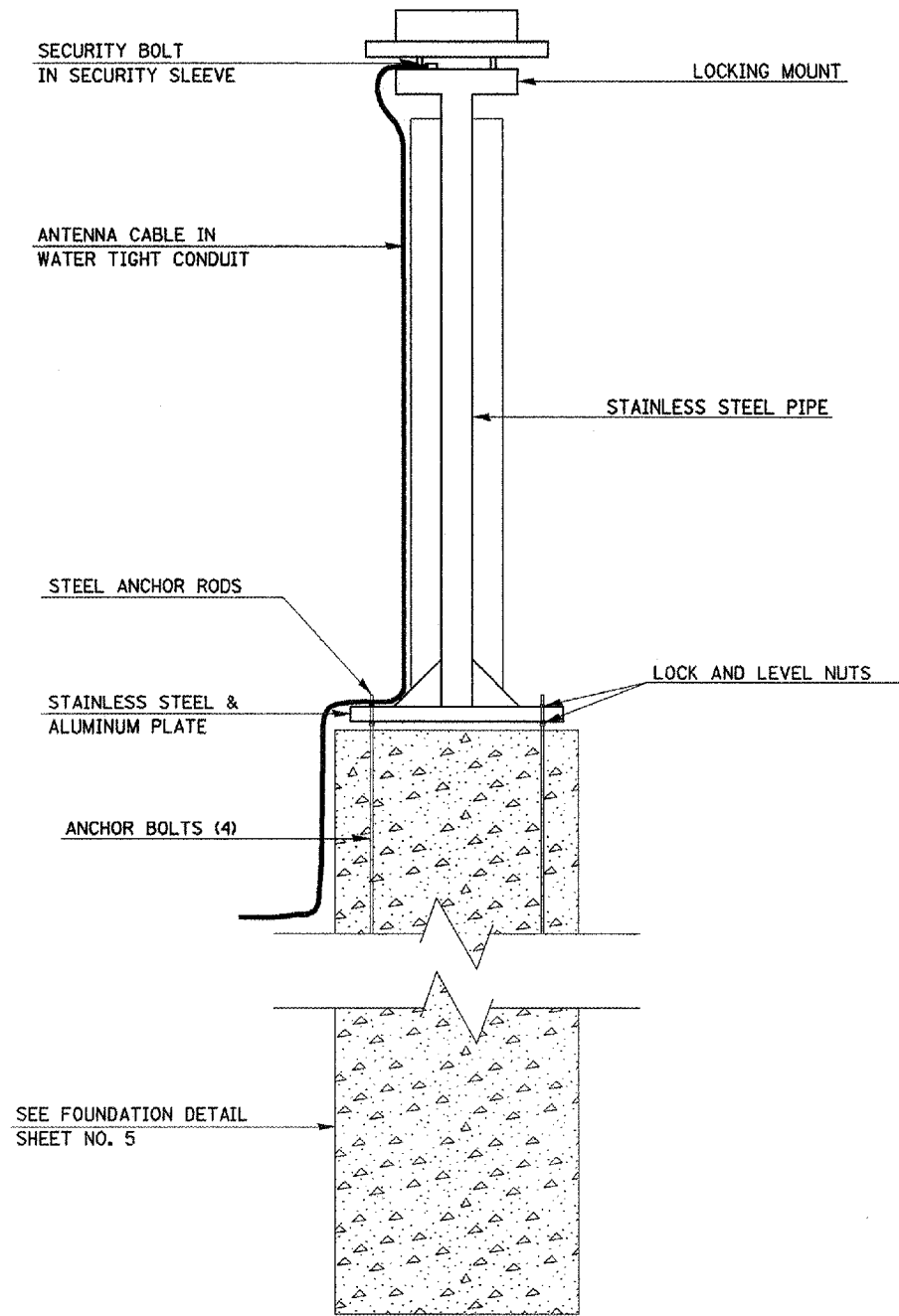
ILLINOIS DEPARTMENT OF TRANSPORTATION

**TYPICAL SITE INSTALL
 ELEVATION VIEW (FACING EAST)**

SCALE: VERT. _____
 HORIZ. _____

DATE _____ DRAWN BY _____
 CHECKED BY _____

F.A.I. RTE.	SECTION	COUNTY	TOTAL SHEETS	SHEET NO.
57	*	**	7	4
STA.		TO STA.		
FED. ROAD DIST. NO.	ILLINOIS	FED. AID PROJECT		
* SECTION GPS MONUMENT SETTINGS FY06				
** JEFFERSON AND WILLIAMSON COUNTIES				



PLOT DATE = 2/18/2006
 FILE NAME = I:\projects\999971\999971.dgn
 PLOT SCALE = 3/16" = 1' IN.
 USER NAME = hollings

REVISIONS	
NAME	DATE

ILLINOIS DEPARTMENT OF TRANSPORTATION

**DETAIL
GPS PEDESTAL**

SCALE: VERT. / HORIZ.
DATE

DRAWN BY
CHECKED BY

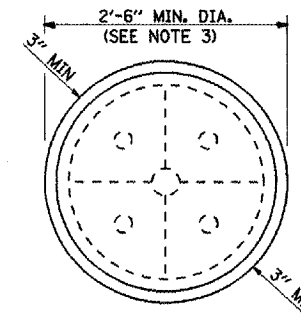
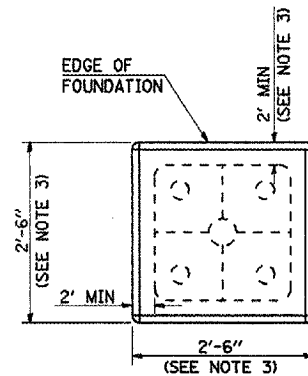
FOUNDATION DETAIL

F.A.I. RTE.	SECTION	COUNTY	TOTAL SHEETS	SHEET NO.
57	*	**	7	5

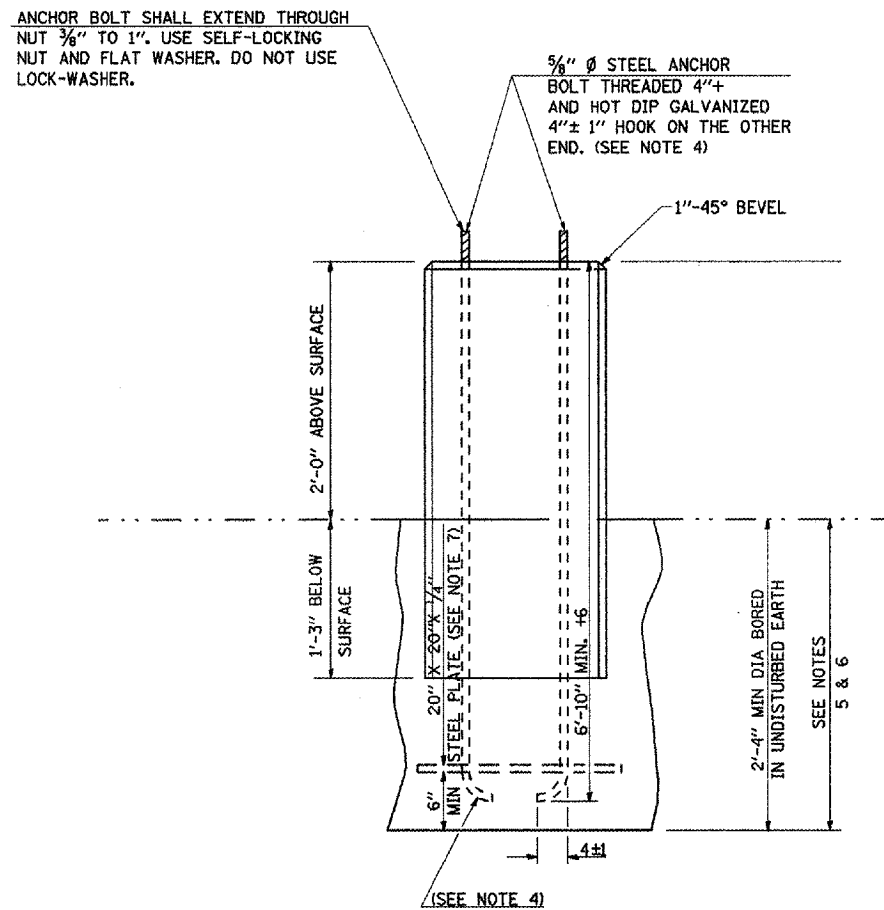
STA. _____ TO STA. _____

FED. ROAD DIST. NO. _____ ILLINOIS FED. AID PROJECT

- SECTION GPS MONUMENT SETTINGS FY06
- JEFFERSON AND WILLIAMSON COUNTIES



ALT. FOUNDATION



GENERAL NOTES

- AFTER POURING CONCRETE, THE FORM SHALL REMAIN UNDISTURBED OVERNIGHT.
- THE TOP 3'-3" ONLY SHALL BE FORMED. CONCRETE BOUNDED BY UNDISTURBED EARTH ONLY SHALL FILL THE REMAINDER OF THE HOLE.
- MINIMUM CLEARANCE FROM THE OUTSIDE EDGE OF FOUNDATION TO ANY PART OF THE POLE BASEPLATE SHALL BE 3".
- BEND RADIUS SHALL BE FOUR TIMES BOLT DIAMETER.
- THE GPS ANTENNA PEDESTAL FOUNDATION SHALL BE A MINIMUM DEPTH OF 15 FEET BELOW THE GROUND SURFACE WHEN IN UNCONSOLIDATED SOILS.
- THE POWER PEDESTAL FOUNDATION SHALL BE A MINIMUM DEPTH OF 5' FEET BELOW THE GROUND SURFACE.
- THE DEPTH OF THE FOUNDATION MAY BE REDUCED WHEN ROCK IS ENCOUNTERED A MINIMUM DEPTH WILL BE 4'-6". WHEN THE DEPTH OF THE FOUNDATION IS DECREASED TO LESS THAN 6' THE ANCHOR BOLTS SHALL BE CUT, THREADED, AND A STEEL PLATE 20" X 20" X 1/4" SHALL BE INSTALLED ON THE ANCHOR BOLTS A MINIMUM OF 6" ABOVE THE BOTTOM OF THE EXCAVATION. THE COST SHALL BE INCIDENTAL THE FOUNDATION.

PLOT DATE = 2/14/2006
 FILE NAME = c:\projects\98971\98971.dwg
 PLOT SCALE = 3/708 / IN.
 USER NAME = kelleghid

REVISIONS	
NAME	DATE

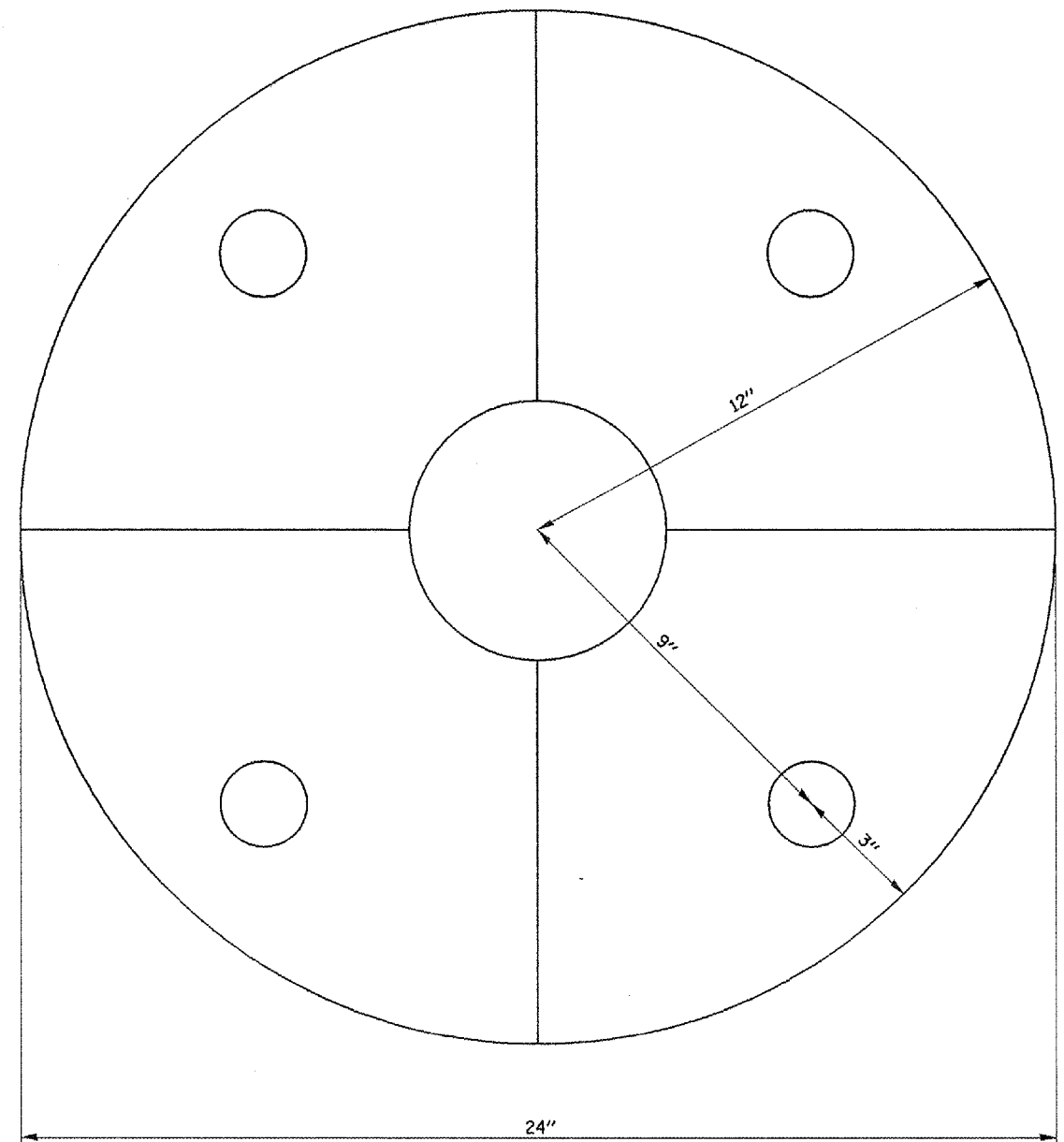
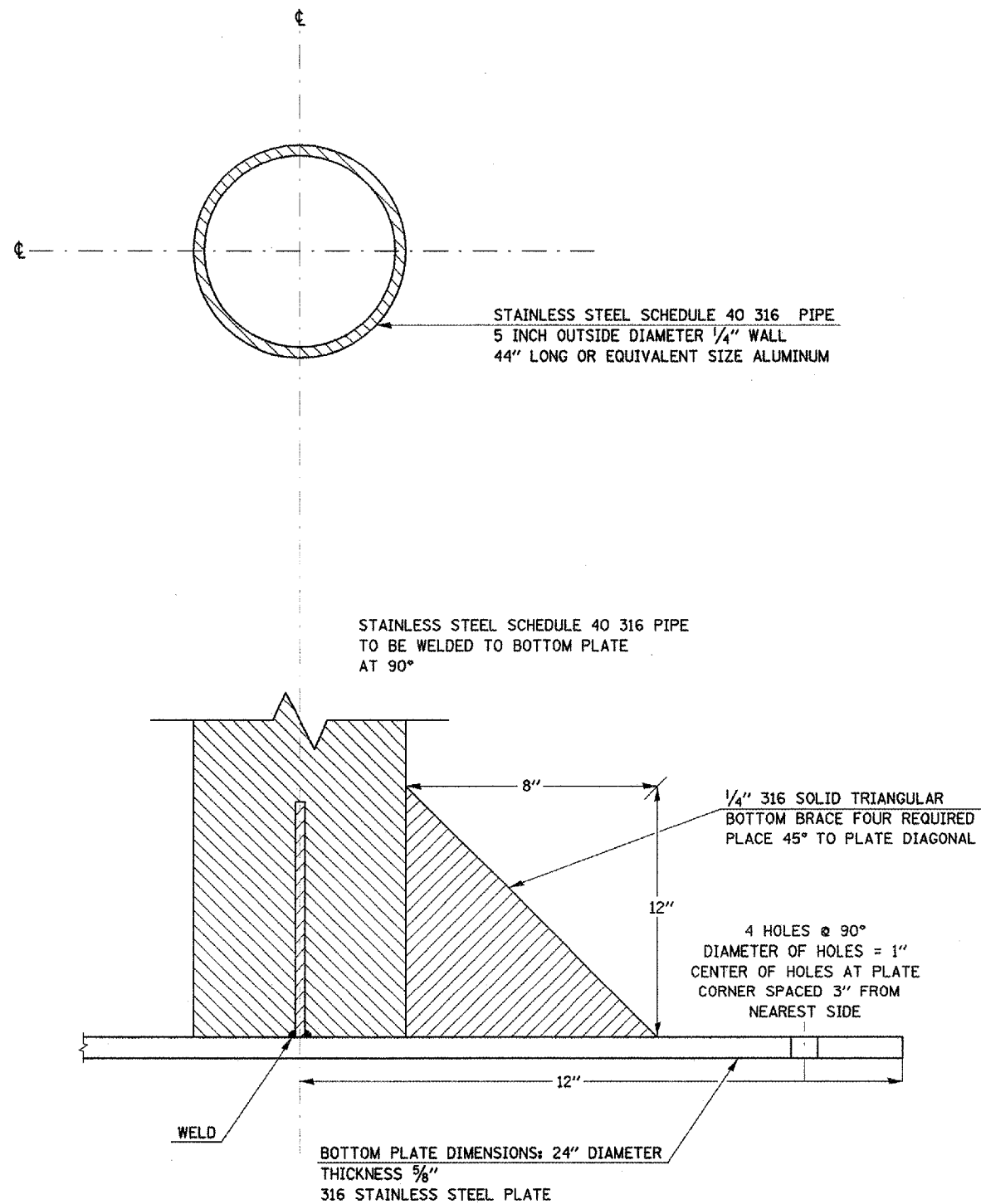
ILLINOIS DEPARTMENT OF TRANSPORTATION

FOUNDATION DETAIL

SCALE: VERT. _____
 HORIZ. _____
 DATE _____

DRAWN BY _____
 CHECKED BY _____

F.A.I. RTE.	SECTION	COUNTY	TOTAL SHEETS	SHEET NO.
57	*	**	7	6
STA.		TO STA.		
FED. ROAD DIST. NO.	ILLINOIS	FED. AID PROJECT		
* SECTION GPS MONUMENT SETTINGS FY06				
** JEFFERSON AND WILLIAMSON COUNTIES				



PLOT DATE = 2/18/2006
FILE NAME = c:\projects\98971\98971.dgn
PLOT SCALE = 3/16" = 1"
USER NAME = kallejhd

REVISIONS	
NAME	DATE

ILLINOIS DEPARTMENT OF TRANSPORTATION

**ANTENNA & POWER
GPS PEDESTAL DETAIL**

SCALE: VERT.
HORIZ.
DATE

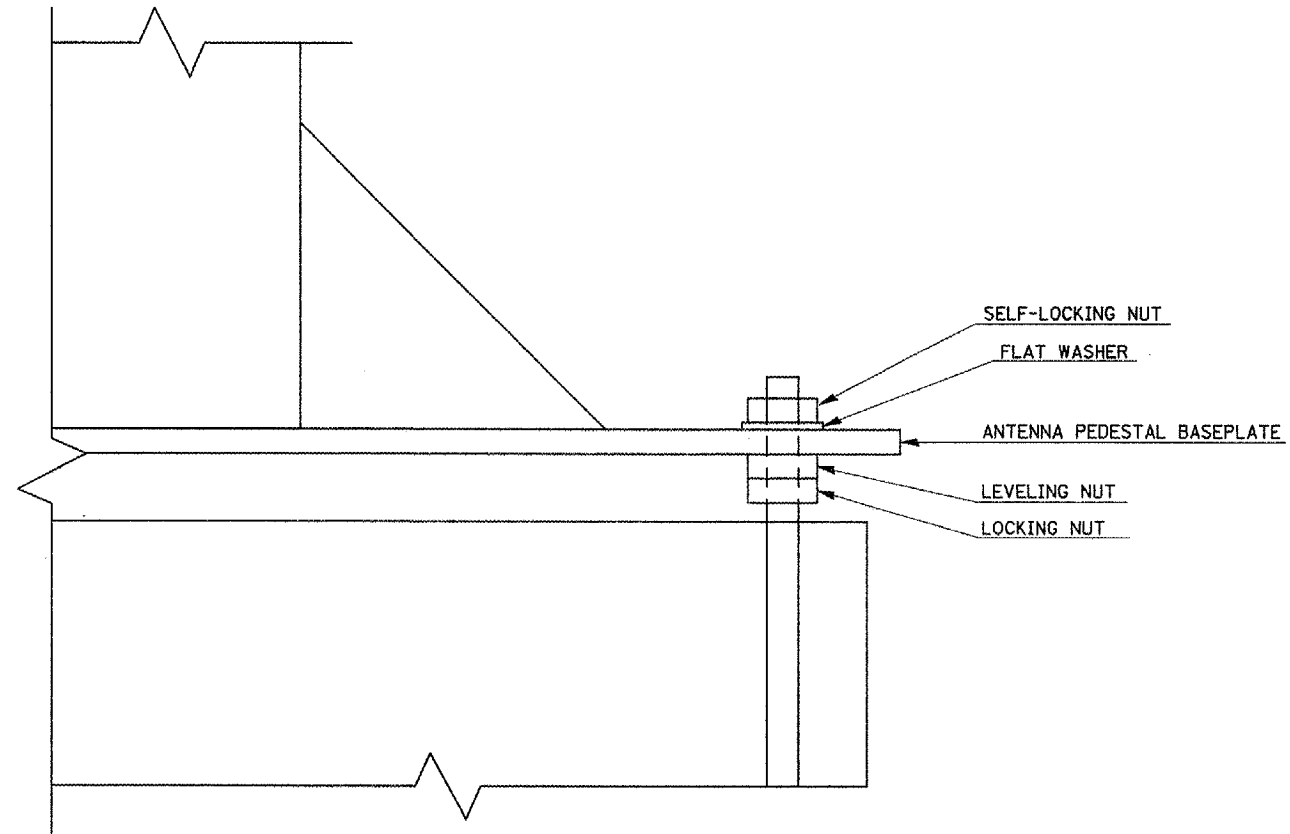
DRAWN BY
CHECKED BY

F.A.I. RTE.	SECTION	COUNTY	TOTAL SHEETS	SHEET NO.
57	*	**	7	7

STA. TO STA.

FED. ROAD DIST. NO. ILLINOIS FED. AID PROJECT

- * SECTION GPS MONUMENT SETTINGS FY06
- ** JEFFERSON AND WILLIAMSON COUNTIES



NOTES

- * NUTS AND WASHERS SHALL BE GALVANIZED STEEL
- * ANTENNA PEDESTAL SHALL BE LEVELED USING LEVELING NUTS AND SECURED USING THE LOCKING NUTS

REVISIONS	
NAME	DATE

ILLINOIS DEPARTMENT OF TRANSPORTATION

PEDESTAL LEVELING DETAILS

SCALE: VERT. _____
 HORIZ. _____
 DATE _____ DRAWN BY _____
 CHECKED BY _____

PLT DATE = 2/15/2008
 FILE NAME = s:\p\m\m\9802981\9802981.dgn
 USER NAME = evanm