

**LEGEND**

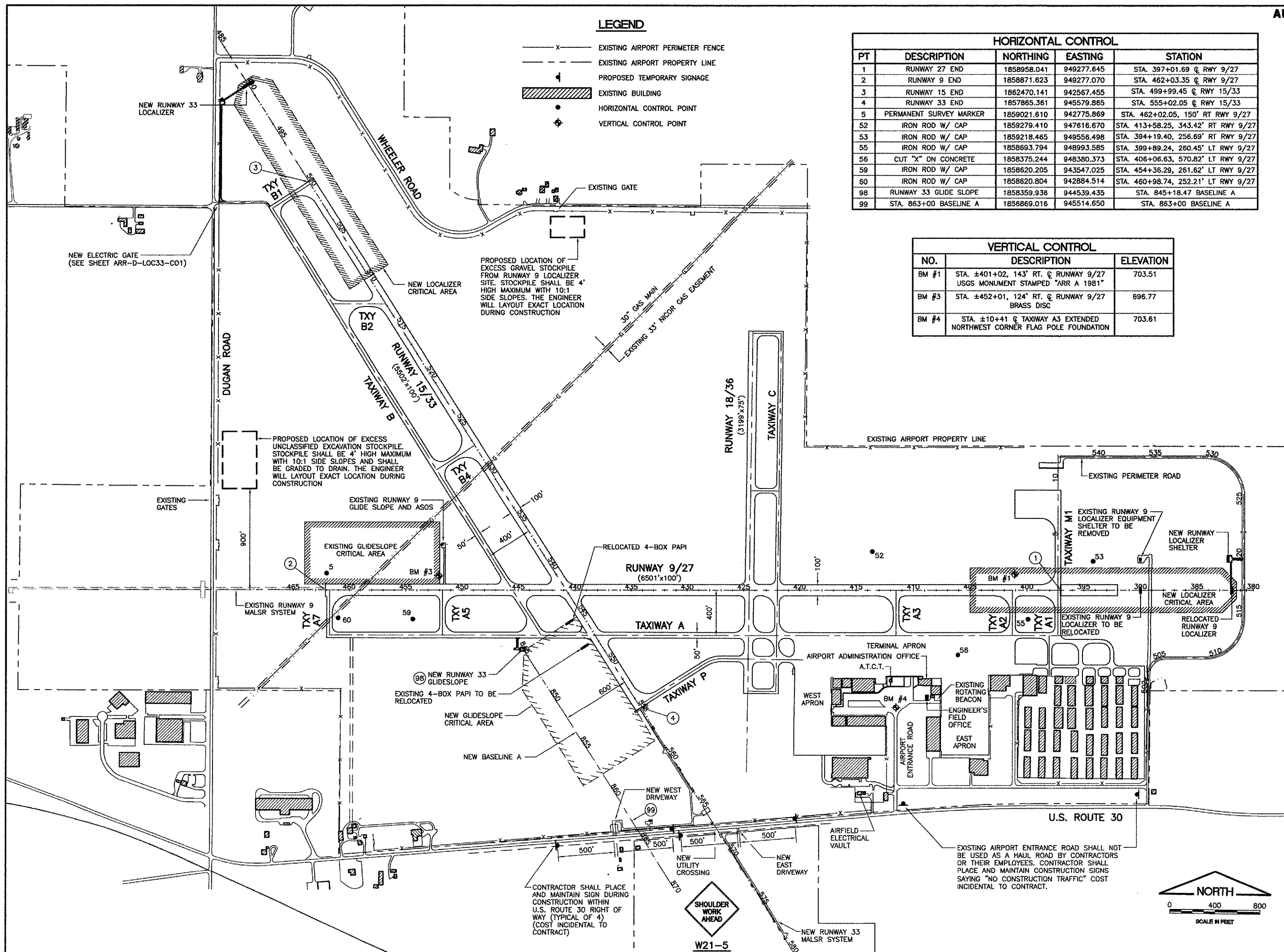
- x — EXISTING AIRPORT PERIMETER FENCE
- - - EXISTING AIRPORT PROPERTY LINE
- ⊥ PROPOSED TEMPORARY SIGNAGE
- ▨ EXISTING BUILDING
- HORIZONTAL CONTROL POINT
- ⊕ VERTICAL CONTROL POINT

HORIZONTAL CONTROL				
PT	DESCRIPTION	NORTHING	EASTING	STATION
1	RUNWAY 27 END	1858958.041	949277.645	STA. 397+01.69 @ RWY 9/27
2	RUNWAY 9 END	1858871.623	949277.070	STA. 462+03.35 @ RWY 9/27
3	RUNWAY 15 END	1862470.141	942567.455	STA. 499+99.45 @ RWY 15/33
4	RUNWAY 33 END	1857865.361	945579.865	STA. 555+02.05 @ RWY 15/33
5	PERMANENT SURVEY MARKER	1859021.610	942775.869	STA. 462+02.05, 150' RT RWY 9/27
52	IRON ROD W/ CAP	1859279.410	947816.670	STA. 413+58.25, 343.42' RT RWY 9/27
53	IRON ROD W/ CAP	1859218.465	949556.498	STA. 394+19.40, 256.69' RT RWY 9/27
55	IRON ROD W/ CAP	1858693.794	948993.585	STA. 399+89.24, 260.45' LT RWY 9/27
56	CUT "X" ON CONCRETE	1858375.244	948380.373	STA. 406+06.63, 570.82' LT RWY 9/27
59	IRON ROD W/ CAP	1858620.205	943547.025	STA. 454+36.29, 261.62' LT RWY 9/27
60	IRON ROD W/ CAP	1858620.804	942884.514	STA. 460+98.74, 252.21' LT RWY 9/27
98	RUNWAY 33 GLIDE SLOPE	1858359.936	944539.435	STA. 845+18.47 BASELINE A
99	STA. 863+00 BASELINE A	1856869.016	945514.650	STA. 863+00 BASELINE A

VERTICAL CONTROL		
NO.	DESCRIPTION	ELEVATION
BM #1	STA. ±401+02, 143' RT. @ RUNWAY 9/27 USGS MONUMENT STAMPED "ARR A 1981"	703.51
BM #3	STA. ±452+01, 124' RT. @ RUNWAY 9/27 BRASS DISC	696.77
BM #4	STA. ±10+41 @ TAXIWAY A3 EXTENDED NORTHWEST CORNER FLAG POLE FOUNDATION	703.61

REVISIONS		
NUMBER	BY	DATE

0 1 2  
 THIS BAR IS EQUAL TO 2"  
 AT FULL SCALE (34X22).



**AURORA MUNICIPAL AIRPORT  
 AURORA, ILLINOIS  
 CONSTRUCT RUNWAY 33 ILS,  
 RELOCATE RUNWAY 9 LOCALIZER  
 SITE PLAN/  
 PROJECT CONTROL PLAN**

© Copyright CMT, Inc.  
**CMT**  
 CRAWFORD, MURPHY & TILLY, INC.  
 CONSULTING ENGINEERS  
 License No. 184-000613

DESIGN BY: CAL  
 DRAWN BY: JRO  
 CHECKED BY: CAL  
 APPROVED BY:  
 DATE: 03/03/06  
 JOB No: 04285-04  
 ILLINOIS PROJECT: ARR-3468  
 A.I.P. PROJECT: 3-17-0003-B31  
**FINAL SUBMITTAL**  
 SHEET 5 OF 66 SHEETS