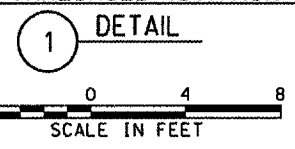
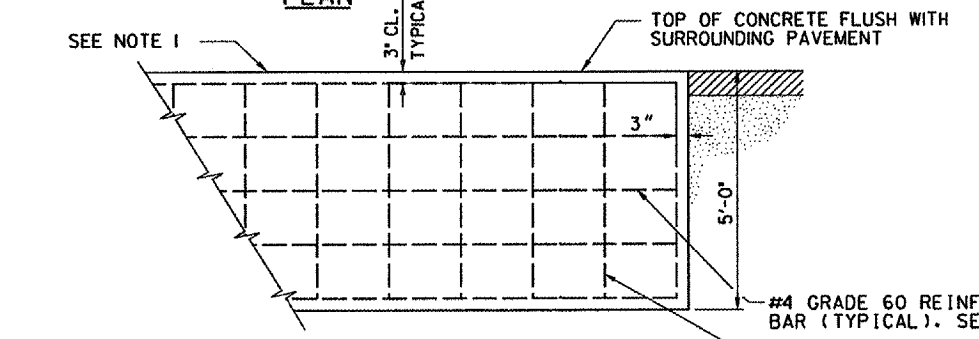
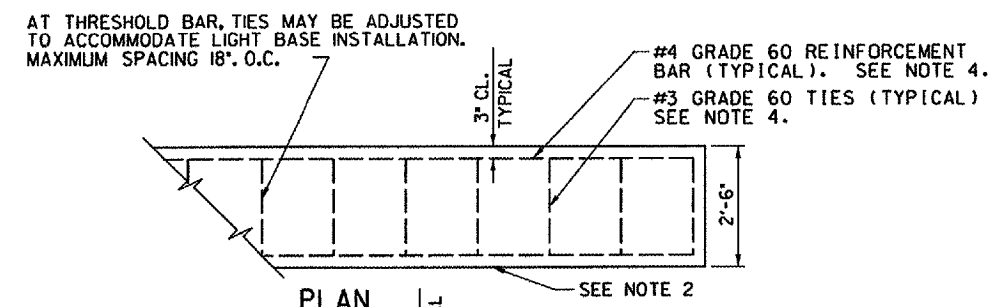


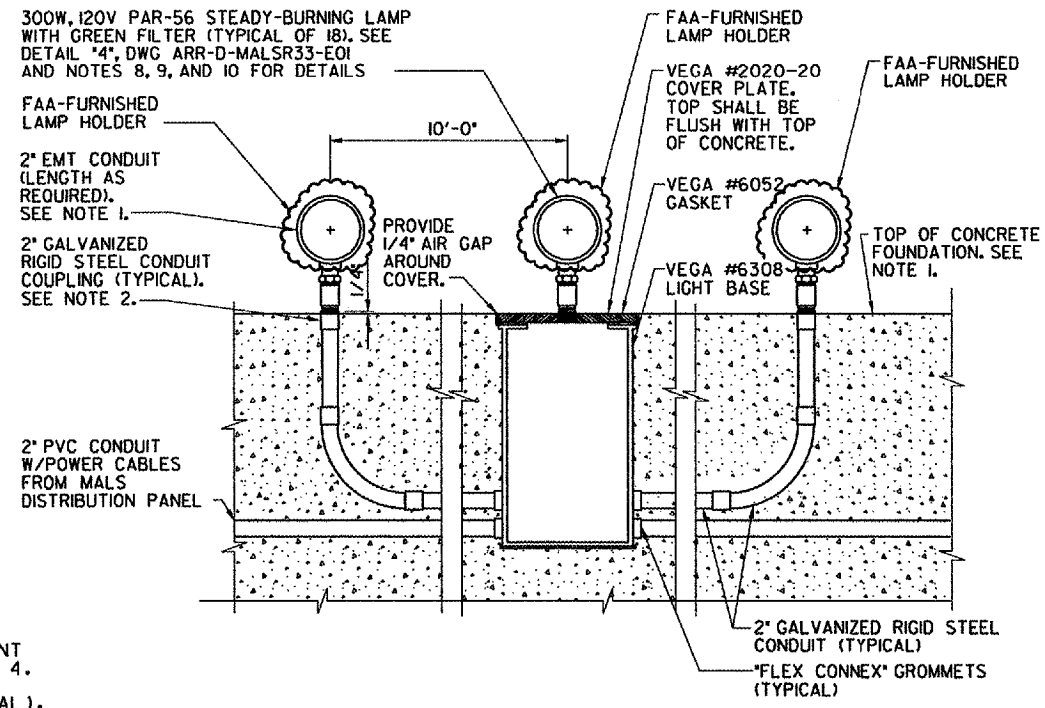
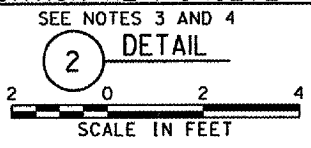
**ELEVATION VIEW  
STEADY-BURNING LIGHT BAR  
AT RUNWAY THRESHOLD (STATION 0+05)**



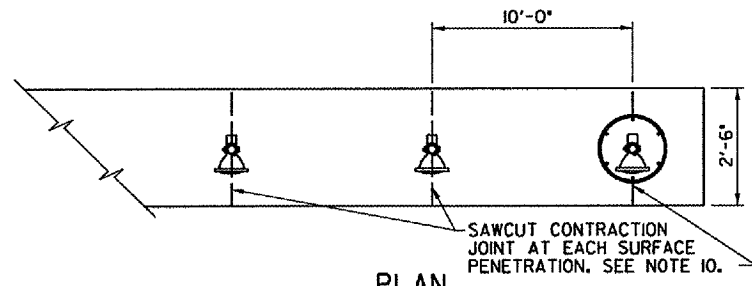
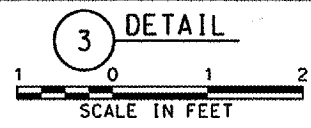
- NOTES:**
- SEE DWG ARR-D-MALSR33-CO1 FOR LAMP CENTERLINE AND FOUNDATION TOP ELEVATIONS.
  - RIGID STEEL COUPLINGS SHALL BE INSTALLED PLUMB. THE TOP OF THE COUPLING SHALL PROTRUDE 1/4" ABOVE THE TOP OF THE CONCRETE FOUNDATION. INSTALL A SHORT NIPPLE INSIDE THE RIGID STEEL COUPLING TO PROVIDE A STOP FOR THE FRANGIBLE COUPLING SO THAT THE TOP THREAD OF THE FRANGIBLE COUPLING IS EXPOSED ABOVE THE RIGID STEEL COUPLING. TIGHTEN FRANGIBLE COUPLING AGAINST SHORT NIPPLE TO PREVENT ROTATION OF THE LAMPHOLDER. SEE SECTION 13A.2d OF THE SPECIFICATION FAA-GL-918C.
  - SEE PROJECT SPECIAL PROVISIONS FOR EXCAVATION AND BACKFILL REQUIREMENTS. EXCAVATION SHALL BE SHORED OR SHAPED PER OSHA REQUIREMENTS.
  - SEE PROJECT SPECIAL PROVISIONS FOR CONCRETE FORM WORK, REINFORCEMENT, MATERIAL, PLACEMENT, AND CURING SPECIFICATIONS.
  - ALL CONNECTIONS TO GROUNDING RODS SHALL BE MADE USING EXOTHERMIC WELDS PER SPECIFICATIONS.
  - GREEN GLASS FILTER SHALL BE INSTALLED PER NOTE 8 AND DETAIL \*4, DWG ARR-D-MALSR33-E01.
  - LAMPHOLDER RETAINING RINGS SHALL BE INSTALLED ON THE PAR-56 LAMPHOLDERS. SEE NOTE 9 AND DETAIL \*4, DWG ARR-D-MALSR33-E01.
  - SEE DETAIL \*1, DWG ARR-D-MALSR33-E01 FOR THRESHOLD BAR WIRING DETAILS.
  - SEE DETAIL \*4, DWG ARR-D-MALSR33-E01 FOR THRESHOLD BAR PAR-56 LAMPHOLDER ASSEMBLY DETAILS.
  - 1/4" WIDE X 1/2" DEEP CONTRACTION JOINTS SHALL BE SAWCUT INTO THE SURFACE OF THE THRESHOLD BAR FOUNDATION AT LOCATIONS SHOWN, AND SEALED.



**CONCRETE FOUNDATION REINFORCEMENT DETAILS**



**TYPICAL LIGHT BASE AND CONDUIT INSTALLATION DETAILS**



**PLAN  
TYPICAL CONTRACTION JOINT DETAILS**



CONTRACTOR SHALL SUBMIT REQUESTS FOR SUBSTITUTION OF SPECIFIC MANUFACTURER'S ITEMS SHOWN PER PARAGRAPH 10 OF THE SPECIAL SPECIFICATIONS.

DEPARTMENT OF TRANSPORTATION FEDERAL AVIATION ADMINISTRATION GREAT LAKES REGION		CHICAGO, ILLINOIS	
<b>MALSR</b>			
<b>FOUNDATION DETAILS FOR STEADY-BURNING LIGHT BAR AT RUNWAY THRESHOLD</b>			
AURORA		AURORA MUNICIPAL AIRPORT	
REVIEWED BY	SUBMITTED BY	APPROVED BY	
	PROJ ENGR, TIMOTHY DYER	PLATFORM MGR, CLELAND MICHEEL	
DESIGNED	TAD	ISSUED BY	DATE 02/17/2006
DRAWN	TAD	CHICAGO HAS IMPLEMENTATION CENTER	JCN
CHECKED	EGS	DRAWING NO	ARR-D-MALSR33-C04

REV	DATE	DESCRIPTION	JCN	REDLINE DATE	APVD

3/16/2006 3:48:57 PM NAME  
 C:\Users\jgibson\Documents\Projects\ARR-D-MALSR33-C04\001.dwg  
 3/16/2006 3:48:57 PM NAME