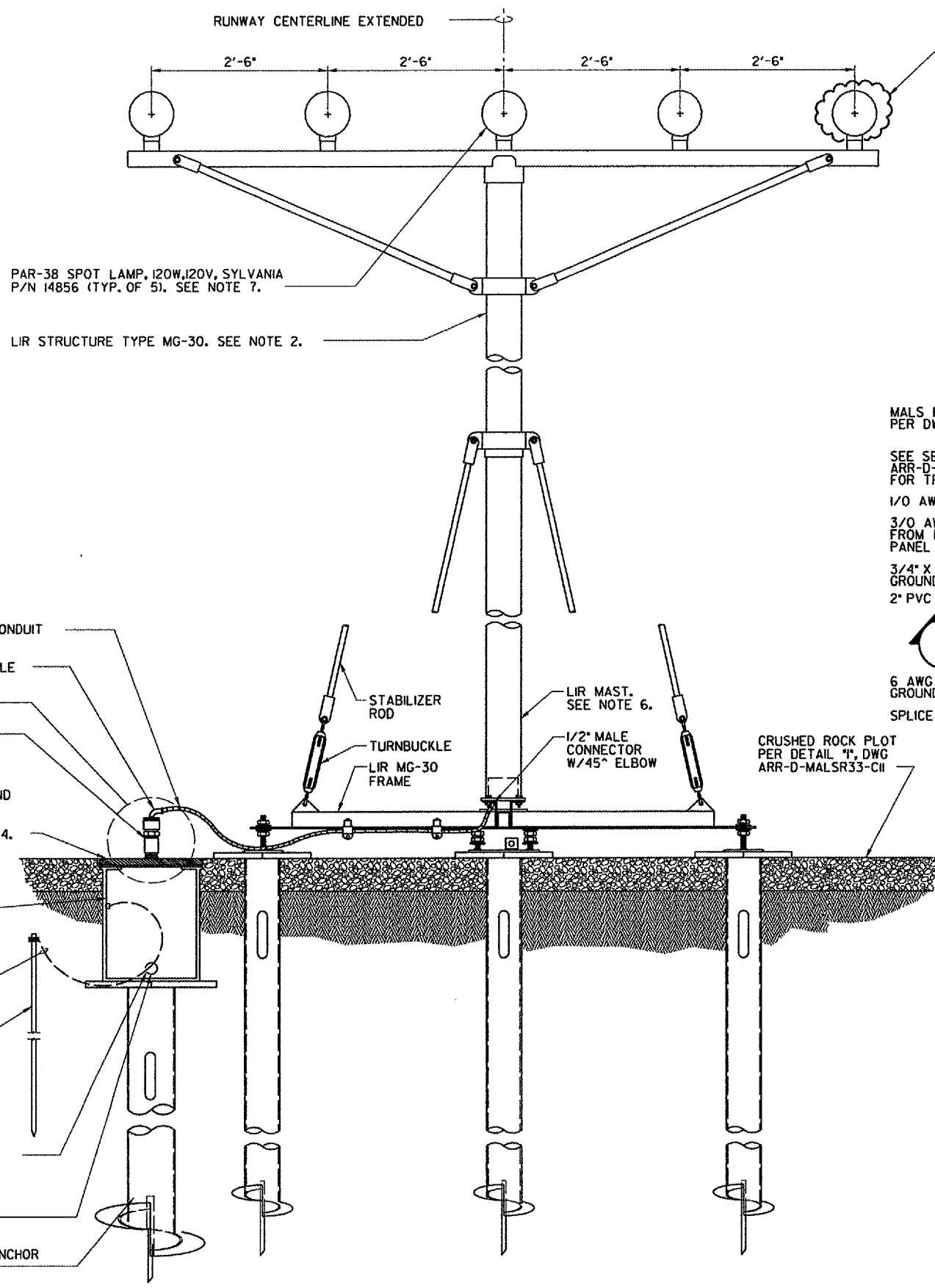


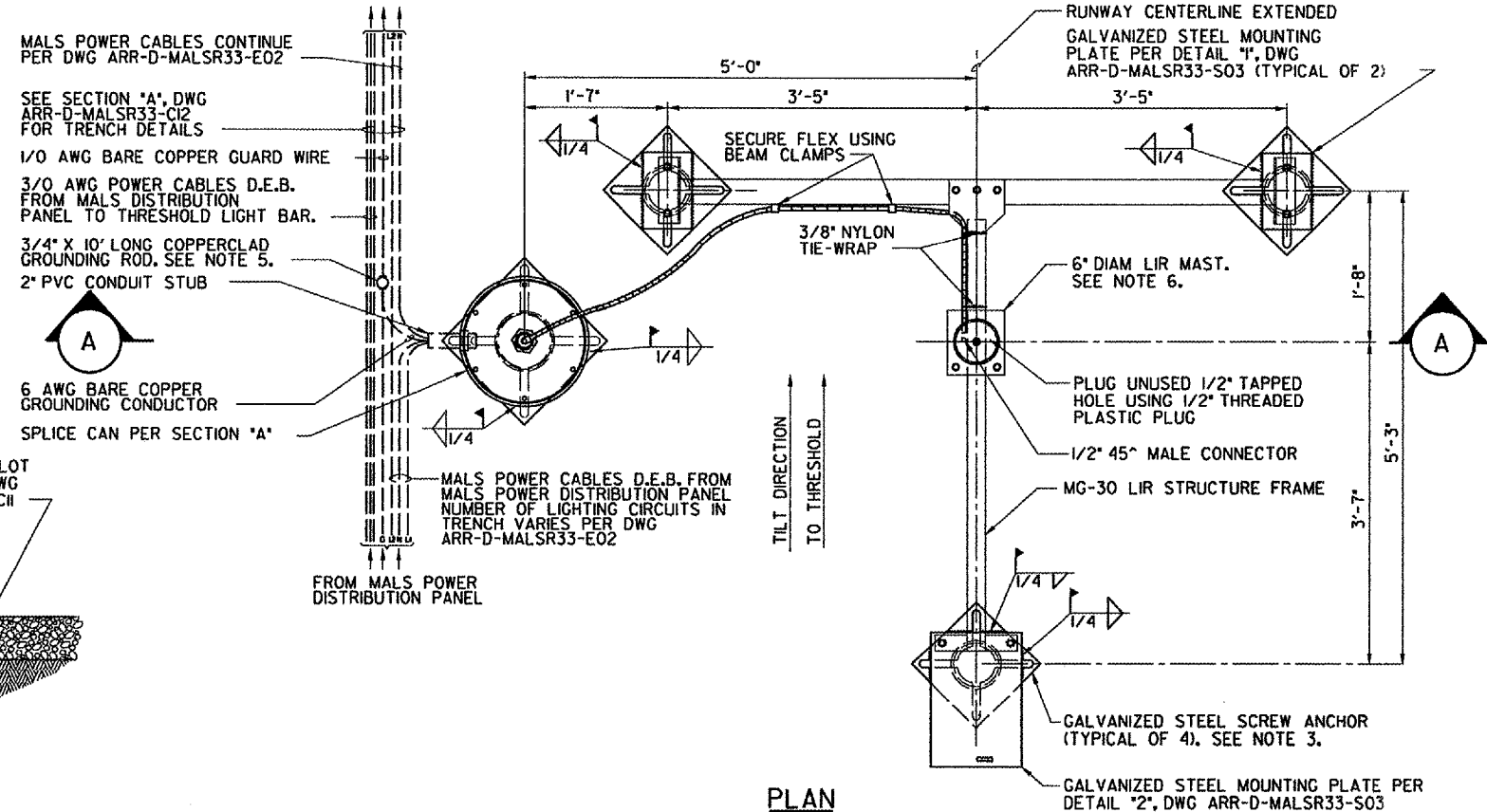
H
G
F
E
D
C
B
A



A SECTION
ELEVATION VIEW
SCALE IN FEET

NOTES:

- SEE DWG ARR-D-MALSR33-COIFOR LAMP CENTERLINE AND FOUNDATION TOP ELEVATIONS.
- LIR STRUCTURES SHALL PIVOT TOWARD THE RUNWAY THRESHOLD. SEE NOTE 1, DWG ARR-D-MALSR33-SOI FOR LIR TUBE CUTTING LENGTH CALCULATION AND MG-20 LIR STRUCTURE ASSEMBLY DETAILS.
- SCREW ANCHOR FOUNDATIONS SHALL CONSIST OF A.B. CHANCE 'INSTANT' FOUNDATIONS, CAT. NO. CTII2-0262 FOR LIR TOWER AND WINCH FOUNDATIONS, AND CAT. NO. CTI2-42NG4VP FOR SPLICE CAN FOUNDATION. SEE SPECIFICATION FAA-GL-918C, SECTION 13B FOR INSTRUCTIONS REGARDING INSTALLATION OF THE ANCHORS.
- EXCAVATE 2' DEEP HOLE AT SPLICE CAN LOCATION SHOWN, DRIVE SCREW ANCHOR SUCH THAT TOP OF PLATE IS 20" BELOW FINISHED GRADE. WELD SPLICE CAN BASE TO THE TOP OF THE ANCHOR MOUNTING PLATE AS SHOWN, WITH FLEX-CONNEX GROMMETS ORIENTED PROPERLY.
- ALL CONNECTIONS TO GROUNDING RODS SHALL BE MADE USING EXOTHERMIC WELDS PER SPECIFICATIONS.
- FOUNDATION SHALL BE CONSTRUCTED SUCH THAT LIR MAST IS CENTERED AT THE RUNWAY STATION SHOWN ON DWG ARR-D-MALSR33-COI.
- SEE DETAILS *3* AND *5*, DWG ARR-D-MALSR33-EOIFOR LIR LIGHT BAR WIRING AND LAMPHOLDER INSTALLATION DETAILS.



PLAN
FOUNDATION LAYOUT FOR
STEADY-BURNING LIGHT BAR
DETAIL
SCALE IN FEET

CONTRACTOR SHALL SUBMIT REQUESTS FOR SUBSTITUTION OF SPECIFIC MANUFACTURER'S ITEMS SHOWN PER PARAGRAPH 1 OF THE SPECIAL SPECIFICATIONS.

DEPARTMENT OF TRANSPORTATION
FEDERAL AVIATION ADMINISTRATION
GREAT LAKES REGION CHICAGO, ILLINOIS

MALSR
FOUNDATION DETAILS FOR STEADY-BURNING
LIGHT BAR AT STATION 8+80,
AND STATION 15+00

AURORA		AURORA MUNICIPAL AIRPORT		IL
REVIEWED BY	SUBMITTED BY	APPROVED BY		
DESIGNED	PROJ ENGR, TIMOTHY DYER	PLATFORM MGR, CLELAND MICHEEL		
DRAWN	TAD	ISSUED BY	DATE 02/21/2006	JCN
CHECKED	EGS	IMPLEMENTATION	DRAWING NO	REV
		ARR-D-MALSR33-C06		

REV	DATE	DESCRIPTION	JCN	REDLINE DATE	APVD

I:\aerodoc\0428504\work\sheet\top to envelope 3-6-05\ARR-D-MALSR33-C06.dwg
 3/16/2006 3:48:01 PM BMM/ES
 06/22