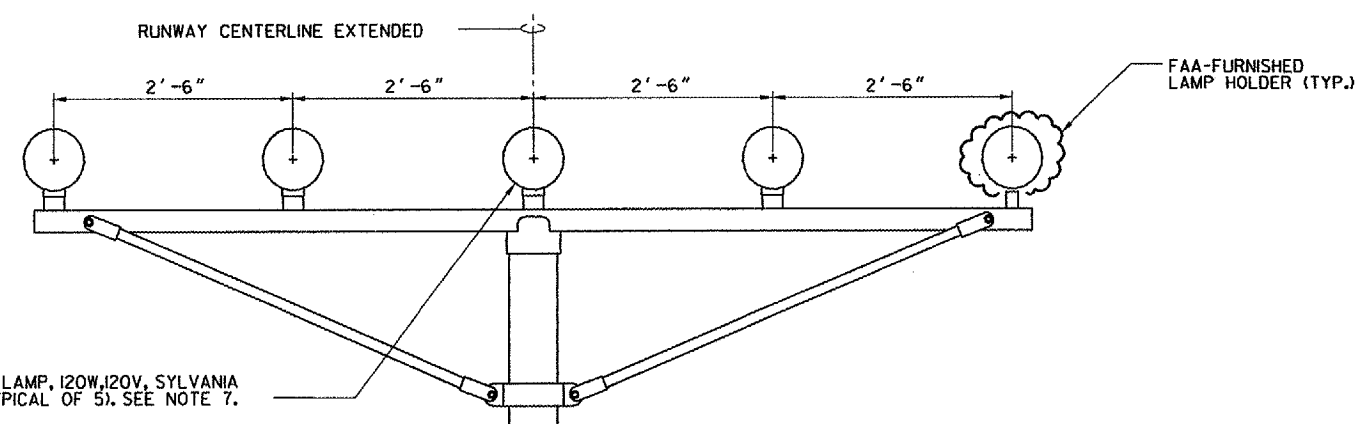
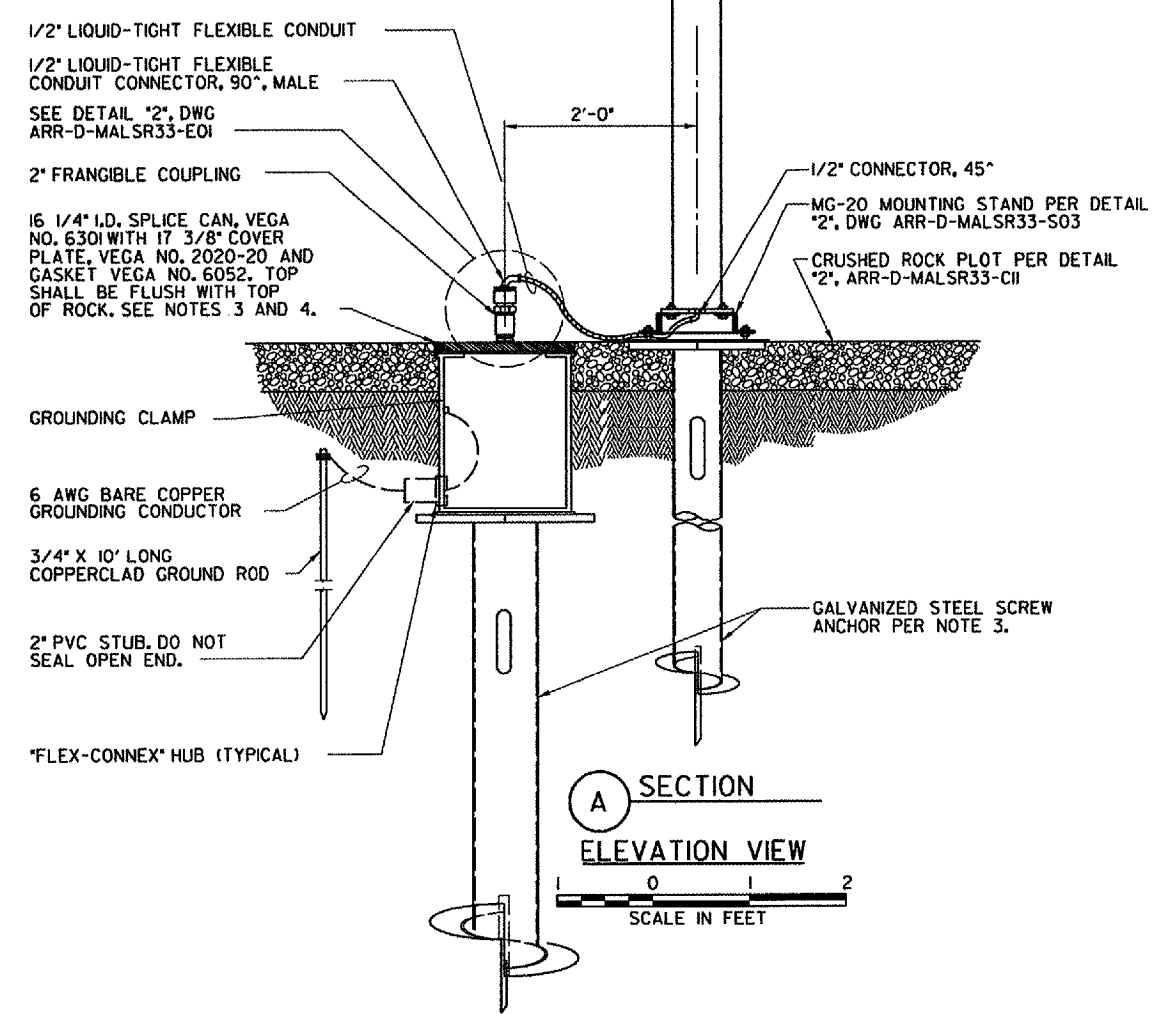


H  
G  
F  
E  
D  
C  
B  
A



PAR-38 SPOT LAMP, I20W, I20V, SYLVANIA P/N 14856 (TYPICAL OF 5), SEE NOTE 7.

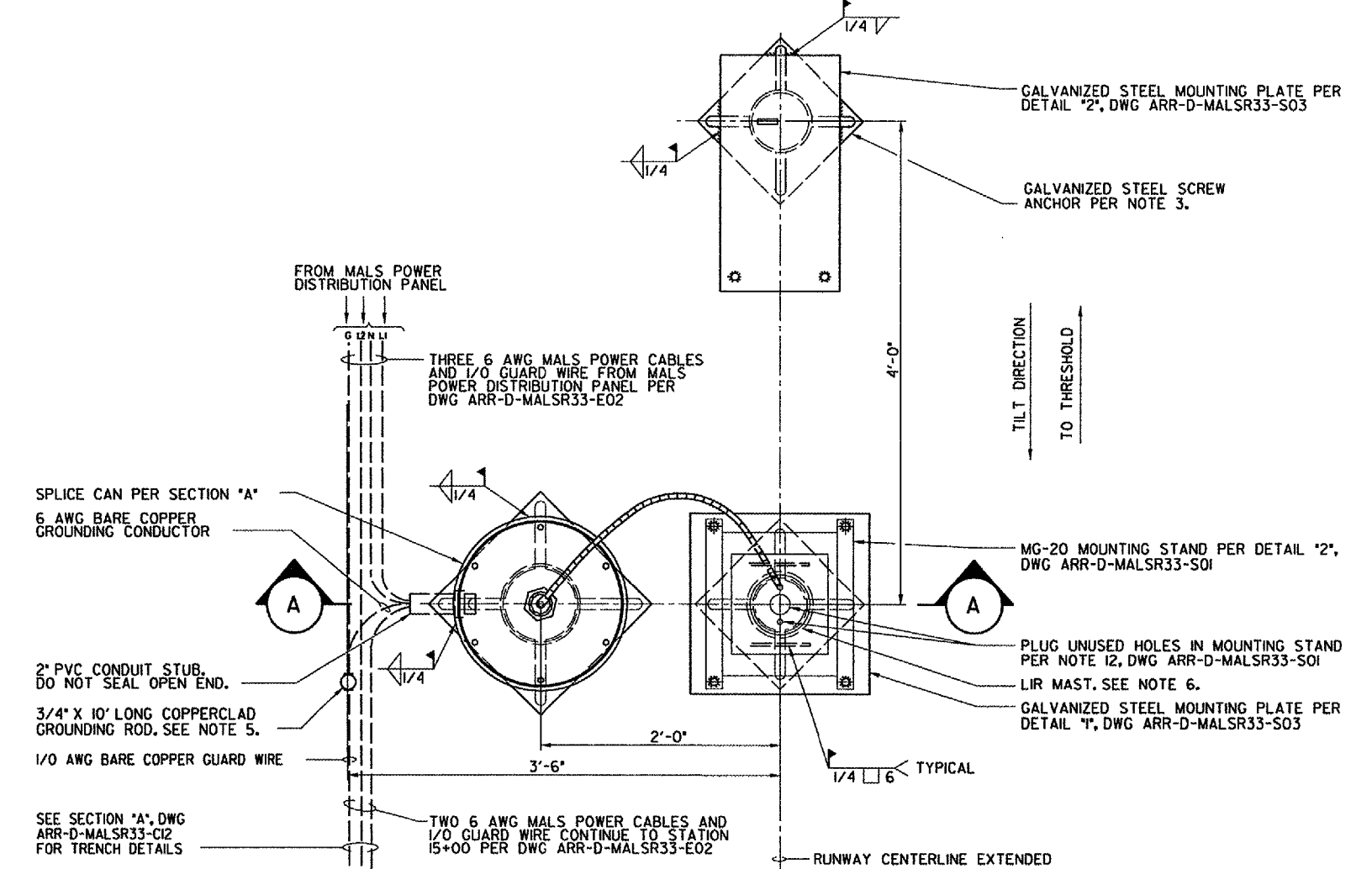
LIR STRUCTURE TYPE MG-20. SEE NOTE 2.



**SECTION A**  
ELEVATION VIEW  
SCALE IN FEET

**NOTES:**

1. SEE DWG ARR-D-MALSR33-COIFOR LAMP CENTERLINE AND FOUNDATION TOP ELEVATIONS.
2. LIR STRUCTURE SHALL PIVOT TOWARD THE RUNWAY THRESHOLD. SEE NOTE 1, DWG ARR-D-MALSR33-S01 FOR LIR TUBE CUTTING LENGTH CALCULATION AND MG-20 LIR STRUCTURE ASSEMBLY DETAILS
3. SCREW ANCHOR FOUNDATIONS SHALL CONSIST OF A.B. CHANCE 'INSTANT' FOUNDATIONS, CAT. NO. CT112-0262 FOR LIR TOWER AND WINCH FOUNDATIONS, AND CAT. NO. C112-42NG4VP FOR SPLICE CAN FOUNDATION. SEE SPECIFICATION FAA-GL-918C, SECTION 13B FOR INSTRUCTIONS REGARDING INSTALLATION OF THE ANCHORS.
4. EXCAVATE 2' DEEP HOLE AT TRANSFORMER HOUSING LOCATION SHOWN, DRIVE SCREW ANCHOR SUCH THAT TOP OF PLATE IS 20" BELOW FINISHED GRADE. WELD TRANSFORMER HOUSING BASE TO THE TOP OF THE ANCHOR MOUNTING PLATE AS SHOWN, WITH FLEX-CONNEX GROMMETS ORIENTED PROPERLY.
5. ALL CONNECTIONS TO GROUNDING RODS SHALL BE MADE USING EXOTHERMIC WELDS PER SPECIFICATIONS.
6. FOUNDATION SHALL BE CONSTRUCTED SUCH THAT LIR MAST IS CENTERED AT THE RUNWAY STATION SHOWN ON DWG ARR-D-MALSR33-C01.
7. SEE DETAILS \*3\* AND \*5\*, DWG ARR-D-MALSR33-E01 FOR LIR LIGHT BAR WIRING AND LAMPHOLDER INSTALLATION DETAILS.



**PLAN FOUNDATION LAYOUT FOR STEADY-BURNING LIGHT BAR**

**DETAIL I**  
SCALE IN FEET

NOTE: THIS TOWER TILTS AWAY FROM ROUTE 30 R.O.W.

SHEET 31 OF 66

DEPARTMENT OF TRANSPORTATION  
FEDERAL AVIATION ADMINISTRATION  
GREAT LAKES REGION CHICAGO, ILLINOIS

MALSR  
FOUNDATION DETAILS FOR STEADY-BURNING LIGHT BAR AT STATION 13+20

AURORA		AURORA MUNICIPAL AIRPORT		IL
REVIEWED BY	SUBMITTED BY	APPROVED BY		
	PROJ ENGR, TIMOTHY DYER	PLATFORM MGR, CLELAND MICHEEL		
DESIGNED	ISSUED BY	DATE	JCN	
DRAWN	IMPLEMENTATION	02/27/2006		
CHECKED	CENTER	DRAWING NO	REV	
		ARR-D-MALSR33-C08		

CONTRACTOR SHALL SUBMIT REQUESTS FOR SUBSTITUTION OF SPECIFIC MANUFACTURER'S ITEMS SHOWN PER PARAGRAPH 1 OF THE SPECIAL SPECIFICATIONS.

REV	DATE	DESCRIPTION	JCN	REDLINE DATE	APVD

I:\Aurora\0428504\view\sheet11.dwg 3-6-05 VRR-D-MALSR33-C08.dwg  
 3/16/2005 3:48:05 PM BMM/CS  
 00722