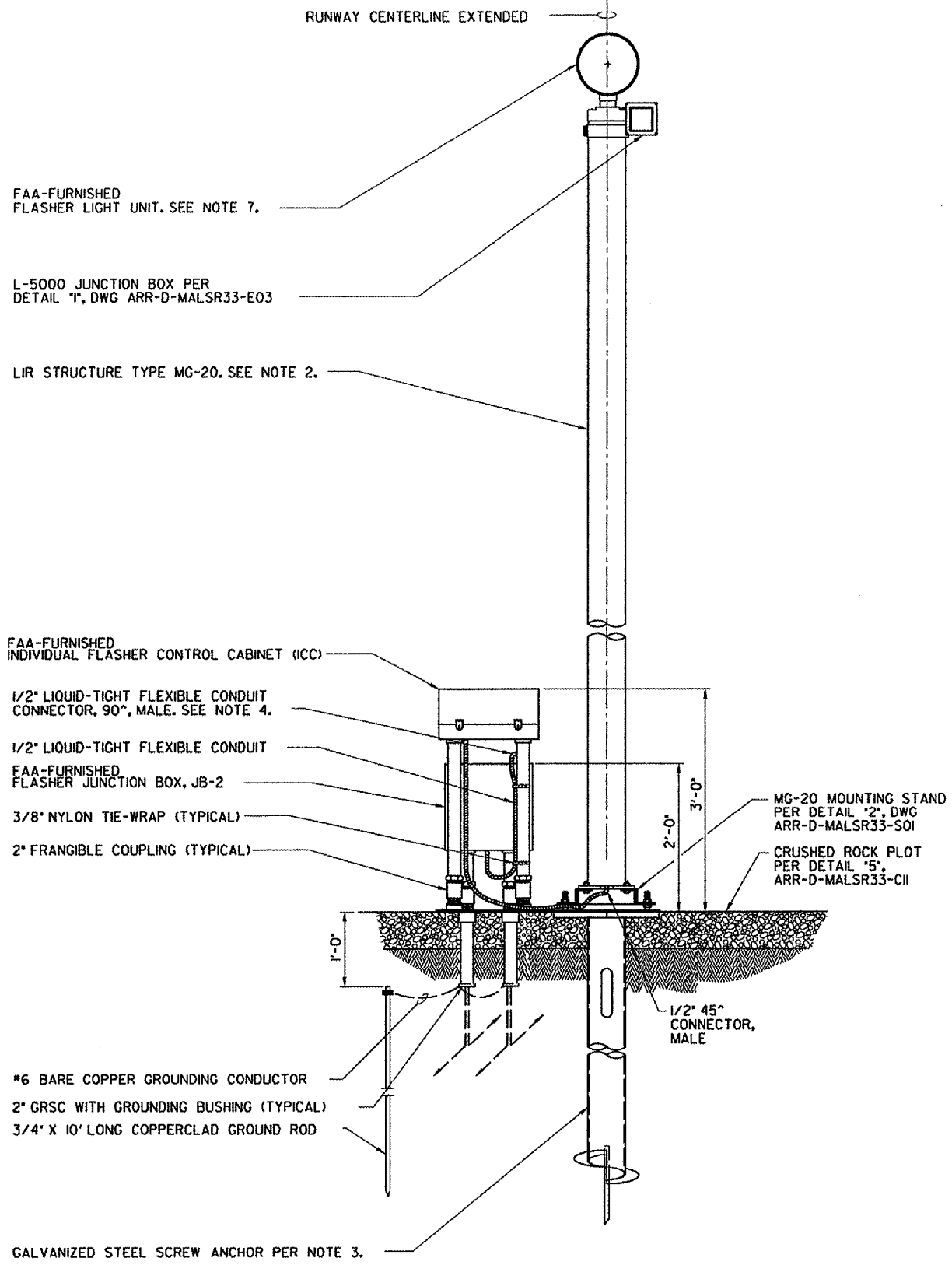


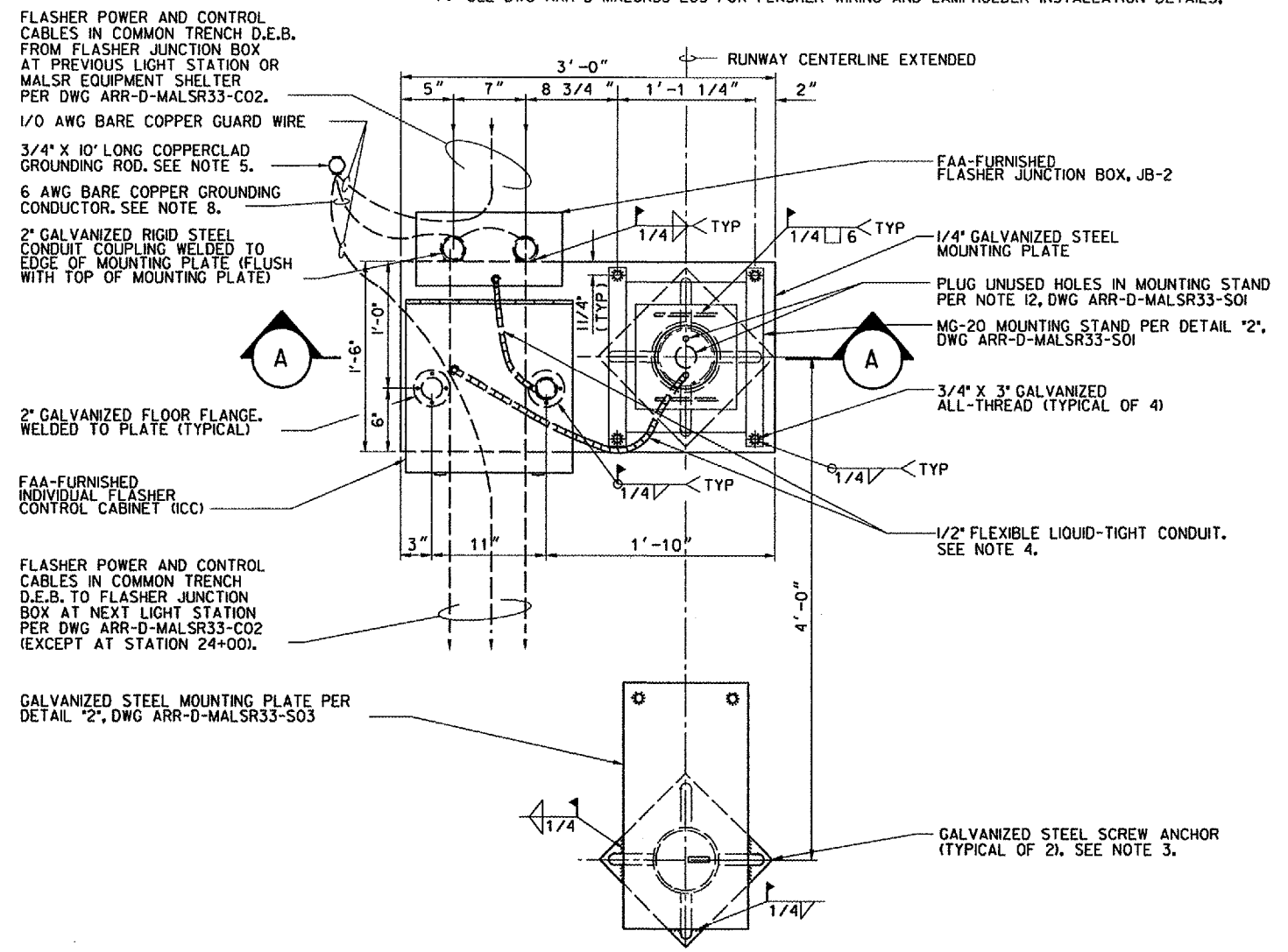
H  
G  
F  
E  
D  
C  
B  
A



**A SECTION**  
**ELEVATION VIEW**  
SCALE IN FEET

**NOTES:**

1. SEE DWG ARR-D-MALSR33-CO1 FOR LAMP CENTERLINE AND FOUNDATION TOP ELEVATIONS.
2. LIR STRUCTURES SHALL PIVOT TOWARD THE RUNWAY THRESHOLD. SEE NOTE 1, DWG ARR-D-MALSR33-SO1 FOR LIR TUBE CUTTING LENGTH CALCULATION AND MG-20 LIR STRUCTURE ASSEMBLY DETAILS
3. ALL SCREW ANCHOR FOUNDATIONS SHALL CONSIST OF A.B. CHANGE 'INSTANT' FOUNDATIONS, CAT. NO. CTII2-0262. SEE SPECIFICATION FAA-GL-918C, SECTION 13B FOR INSTRUCTIONS REGARDING INSTALLATION OF THE ANCHOR.
4. DRILL HOLE IN SIDE OF 2" EMT CONDUIT LEG OF ICC AND INSTALL 90° 1/2" FLEX CONDUIT CONNECTOR WITH 1/2" FLEX CONDUIT FROM JUNCTION BOX, ROUTE POWER AND CONTROL CABLES THROUGH FLEX CONDUIT, INTO EMT LEG AND INTO ICC. SEAL PENETRATION USING SILICONE SEALER.
5. ALL CONNECTIONS TO GROUNDING RODS SHALL BE MADE USING EXOTHERMIC WELDS PER SPECIFICATIONS.
6. FOUNDATION SHALL BE CONSTRUCTED SUCH THAT LIR MAST IS CENTERED AT THE RUNWAY STATION SHOWN ON DWG ARR-D-MALSR33-CO2.
7. SEE DWG ARR-D-MALSR33-E03 FOR FLASHER WIRING AND LAMPHOLDER INSTALLATION DETAILS.



**PLAN**  
**FOUNDATION LAYOUT FOR MALSR FLASHER**

**1 DETAIL**  
SCALE IN FEET

CONTRACTOR SHALL SUBMIT REQUESTS FOR SUBSTITUTION OF SPECIFIC MANUFACTURER'S ITEMS SHOWN PER PARAGRAPH 1 OF THE SPECIAL SPECIFICATIONS.

DEPARTMENT OF TRANSPORTATION  
FEDERAL AVIATION ADMINISTRATION  
GREAT LAKES REGION CHICAGO, ILLINOIS

MALSR  
FOUNDATION DETAILS FOR FLASHER  
AT STATION 16+80, 18+60, AND 20+40

AURORA AURORA MUNICIPAL AIRPORT IL

REVIEWED BY	SUBMITTED BY	APPROVED BY
DESIGNED	ISSUED BY	DATE
DRAWN	IMPLEMENTATION	CHICAGO NAS
CHECKED	EGS	ARR-D-MALSR33-C09

REV	DATE	DESCRIPTION	JCN	REDLINE DATE	APVD

K:\aurotop\1428504\Drawings\Drawings\3-D\ARR-D-MALSR33-C09.dwg  
 3/16/2006 3:49:05 PM RWAME