

NUMBERED LEGEND:

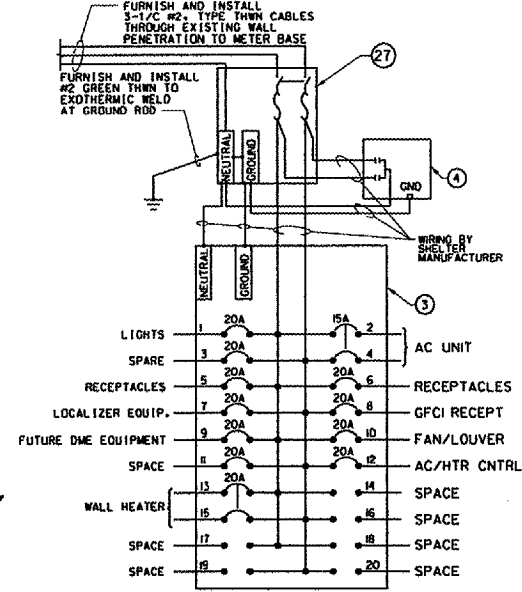
- I = CONTRACTOR SHALL INSTALL ITEM, F&I = CONTRACTOR SHALL FURNISH & INSTALL ITEM, BO = SHALL BE INSTALLED BY FAA INSTALLATION PERSONNEL OR IS ALREADY INSTALLED IN PRE-FABRICATED EQUIPMENT SHELTER
- 1 (1) WOOD FRAME EQUIPMENT SHELTER W/FIBERGLASS EXTERIOR FINISH PER DWG ARR-D-MALSR33-A01
- F&I 2 (2) METER BASE FOR USE WITH UNDERGROUND SERVICE PER POWER COMPANY'S SPECIFICATIONS SHALL BE INSTALLED OVER WALL PENETRATION UNINSTALLED BY SHELTER MANUFACTURER. INSTALL 3-1/4" #2 TYPE THWN POWER CABLES AND #6 GREEN THWN GROUND CONDUCTOR TO SECONDARY LEADS OF METER BASE AND PRIMARY LEADS OF SERVICE ENTRANCE DISCONNECT SWITCH. INSTALL 3-1/4" #2 TYPE U.S.E. POWER CABLES AND #2 GREEN TYPE U.S.E. GROUND CONDUCTOR 2" GALVANIZED ROD STEEL CONDUIT 2" BELOW GRADE (MIN) FROM TRANSFORMER'S SECONDARY. CONNECTIONS AT TRANSFORMER WILL BE MADE BY COMMONWEALTH EDISON REPRESENTATIVES. CONTACT KATE OLIVA AT (847) 608-2338 WHEN READY.
- BO 3 (3) 100A BREAKER PANEL, 20 CIRCUITS, W/BOLT ON BREAKERS
- BO 4 (4) AC SURGE ARRESTOR, 120/240V
- BO 5 (5) 6" SQUARE DUCT
- BO 6 (6) ELECTRICAL RECEPTACLE
- BO 7 (7) INTERIOR LIGHT SWITCH
- BO 8 (8) EXTERIOR LIGHT SWITCH
- BO 9 (9) EMERGENCY LIGHT
- BO 10 (10) INTRUSION SENSOR
- BO 11 (11) SMOKE DETECTOR RESET SWITCH
- BO 12 (12) WORKSTATION GROUND
- BO 13 (13) GROUNDING STRAP
- BO 14 (14) WALL-MOUNTED EXTERIOR LIGHT WITH PHOTO CONTROL
- BO 15 (15) 4'-LONG 2-LAMP-TUBE FLUORESCENT LIGHT FIXTURE, 120-VOLT
- BO 16 (16) TELECOMMUNICATIONS ENCLOSURE PER DETAIL "2"
- BO 17 (17) 1" PVC CONDUIT CARRYING #4/0 GREEN THWN W/ORANGE STRIPE FROM MAIN GROUNDING PLATE TO MULTIPOINT GROUNDING PLATE.
- BO 18 (18) A/C THRU-WALL UNIT, 12,000 BTU,
- BO 19 (19) 12" SQUARE MOTORIZED LOUVER WITH FILTER AND HOOD
- BO 20 (20) EXHAUST FAN WITH VENT HOOD
- BO 21 (21) WALL-MOUNTED ELECTRIC HEATER
- BO 22 (22) ENVIRONMENTAL CONTROL PANEL
- BO 23 (23) 1" PVC CONDUIT CARRYING #4/0 GREEN THWN W/ORANGE STRIPE FROM MAIN GROUNDING PLATE TO MULTIPOINT GROUNDING PLATE.
- BO 24 (24) MAIN COPPER GROUNDING PLATE WITH PLASTIC COVER
- BO 25 (25) MULTIPOINT COPPER GROUNDING PLATE WITH PLASTIC COVER
- BO 26 (26) 2" PVC CONDUIT WITH TWO #4/0 THWN GROUNDING CONDUCTORS FROM MAIN GROUNDING PLATE TO COUNTERPOISE. SEE NOTE 3.
- BO 27 (27) MAIN DISCONNECT, 100A, 240V, W/FUSES
- BO 28 (28) BUILDING WALL PENETRATION FROM SERVICE ENTRANCE DISCONNECT SWITCH TO EXTERIOR
- BO 29 (29) EYE WASH STATION
- BO 30 (30) WORK BENCH/DESK
- BO 31 (31) DRAWER STORAGE UNIT
- BO 32 (32) SMOKE DETECTOR ON CEILING
- BO 33 (33) MALS R POWER AND CONTROL CABINET
- BO 34 (34) AIR-TO-GROUND RADIO RECEIVER/CONTROLLER ANTENNA
- BO 35 (35) MALS R POWER TRANSFORMER
- BO 36 (36) MALS POWER DISCONNECT SWITCH
- BO 37 (37) FLASHER POWER DISCONNECT SWITCH
- BO 38 (38) POWER JUNCTION BOX
- BO 39 (39) CONTROL JUNCTION BOX
- F&I 40 (40) 3/4" X 10' COPPERCLAD GROUNDING ROD
- F&I 41 (41) #6 BARE COPPER GROUNDING AND BONDING CONDUCTOR
- F&I 42 (42) #4/0 BARE COPPER COUNTERPOISE 2'-6" BELOW GRADE. SEE NOTE 3.
- F&I 43 (43) 2" GRSC WITH EXPANSION COUPLING FOR COMMUNICATIONS CABLES
- F&I 44 (44) 1" GRSC WITH EXPANSION COUPLING FOR GROUNDING CONDUCTOR
- F&I 45 (45) #2/0 GROUNDING CONDUCTOR, GREEN THWN WITH RED STRIPE IN 1" GRSC CONDUIT. LEAVE 5' LENGTH OF CONDUCTOR IN CONTROL JUNCTION BOX FOR TERMINATION BY FAA INSTALLATION PERSONNEL.
- BO 46 (46) RADIO INTERFACE UNIT
- BO 47 (47) GROUND-TO-GROUND RADIO RECEIVER
- BO 48 (48) GROUND-TO-GROUND RADIO RECEIVER ANTENNA
- BO 49 (49) GROUND-TO-GROUND RADIO DECODER
- BO 50 (50) AIR-TO-GROUND RADIO RECEIVER/CONTROLLER

120/240V, SINGLE PHASE, 100 AMP, MAIN LUGS, SURFACE-MOUNTED

| DESCRIPTION | C/B | # | LOAD | # | C/B | DESCRIPTION |
|------------------|-----|----|-----------------|-------|------|-----------------------|
| LIGHTS | 20 | 1 | 550 | 1265 | 2 | 15 A/C UNIT |
| SPARE | 20 | 1 | 360 | 1265 | 4 | 2 RECEPTACLES |
| RECEPTACLES | 20 | 5 | 720 | 720 | 6 | 20 1 RECEPTACLES |
| LOCALIZER EQUIP. | 20 | 1 | 360 | 8 | 20 | 1 GFCI RECEPT |
| DME EQUIPMENT | 20 | 1 | 9 | 1020 | 1 | 1 FAN / LOUVER |
| SPACE | | 11 | | 180 | 12 | 20 1 AC / HTR CONTROL |
| WALL HEATER | 20 | 13 | 1500 | 1500 | 16 | SPACE |
| SPACE | | 2 | | 15 | 16 | SPACE |
| SPACE | | 17 | | 18 | 18 | SPACE |
| SPACE | | 19 | | 20 | 20 | SPACE |
| PHASE LOAD | | | | 5115 | 3305 | |
| TOTAL LOAD | | | 8420W / 240 V = | 35.08 | AMPS | |

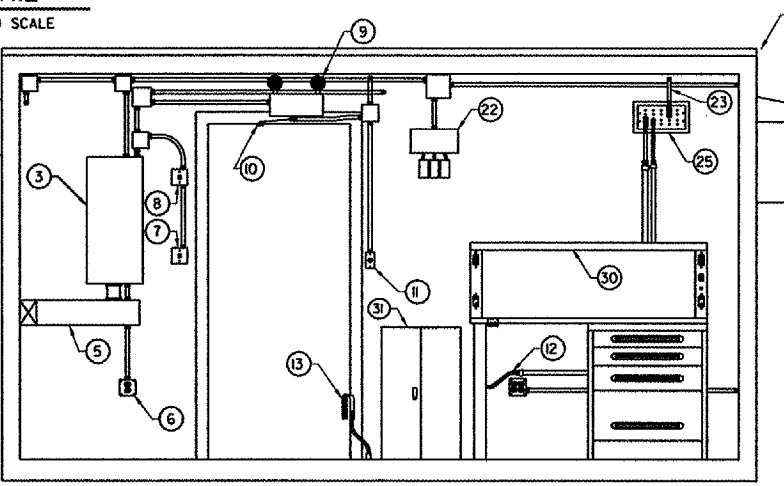
DISTRIBUTION PANEL LOAD SCHEDULE

5 DETAIL
NOT TO SCALE



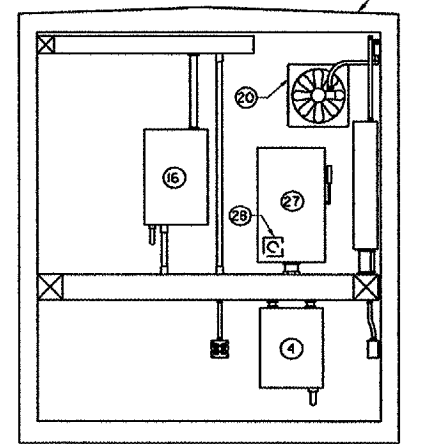
POWER PANEL WIRING

4 DETAIL
NOT TO SCALE



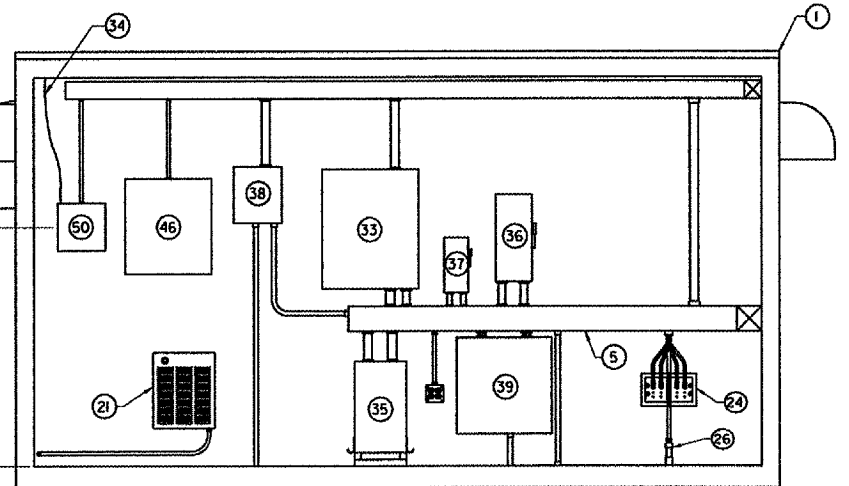
FRONT WALL INTERIOR ELEVATION

D SECTION



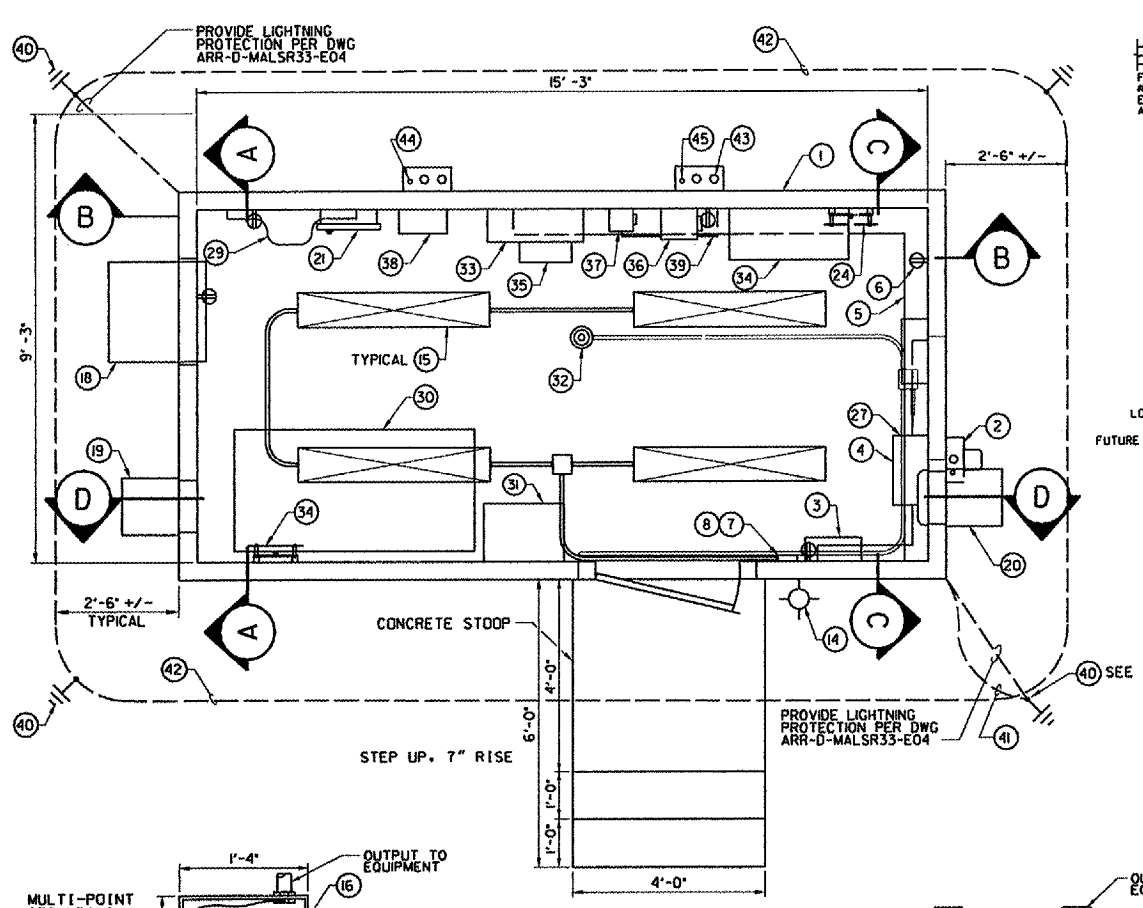
RIGHT WALL INTERIOR ELEVATION

C SECTION



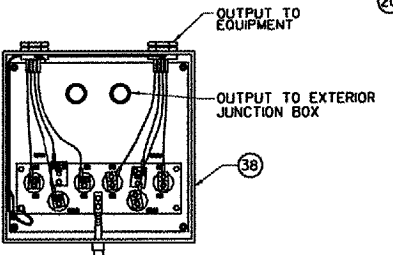
REAR WALL INTERIOR ELEVATION

B SECTION



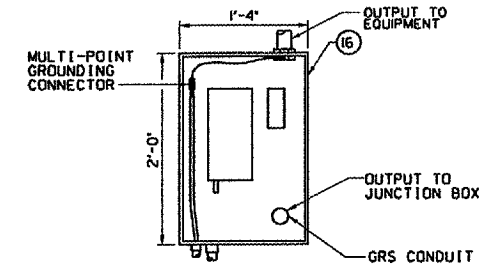
PLAN

1 DETAIL
SCALE IN FEET



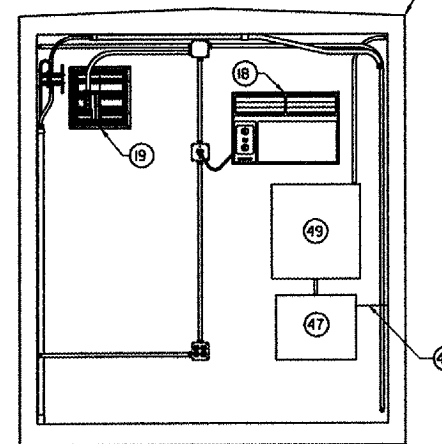
POWER IN/OUT JUNCTION BOX

3 DETAIL
NOT TO SCALE



TELECOMMUNICATIONS ENCLOSURE

2 DETAIL
NOT TO SCALE



LEFT WALL INTERIOR ELEVATION

A SECTION

NOTES:

1. LIGHT FIXTURES, POWER PANEL, SURGE ARRESTOR, RECEPTACLES, AND LIGHT SWITCHES ARE SURFACE MOUNTED. CONDUIT RUNS SHALL BE INSTALLED PLUMB OR HORIZONTAL WITH MINIMUM NUMBER OF BENDS.
2. EXTERIOR WALL PENETRATIONS SHALL BE SEALED WITH WATERPROOF SILICONE CAULK.
3. ALL GROUNDING CONDUCTOR CONNECTIONS TO COUNTERPOISE SHALL BE ATTACHED TO GROUNDING RODS USING EXOTHERMIC WELDS PER SPECIFICATIONS.

DEPARTMENT OF TRANSPORTATION
FEDERAL AVIATION ADMINISTRATION
GREAT LAKES REGION CHICAGO, ILLINOIS

MALS R
FLOOR PLAN AND INTERIOR ELEVATIONS
8' X 16' PRE-FABRICATED EQUIPMENT SHELTER

| | | | | |
|-------------------------|--------------|-----------------------------------|------------|-------------------|
| AURORA | | AURORA MUNICIPAL AIRPORT | | IL |
| REVIEWED BY | SUBMITTED BY | APPROVED BY | | |
| | | | | |
| PROJ ENGR. TIMOTHY DYER | | PLATFORM MGR. CLELAND MICHEEL | | |
| DESIGNED | TAD | ISSUED BY | DATE | JCN |
| DRAWN | TAD | CHICAGO NAS IMPLEMENTATION CENTER | 02/27/2006 | |
| CHECKED | EGS | | | REV |
| | | | | ARR-D-MALSR33-A02 |

I:\aerodp\0428504\Drawings\001\Drawings\3-6-05\ARR-D-MALSR33-A02.dwg
 3/16/2006 3:48:55 PM RWME3
 00735