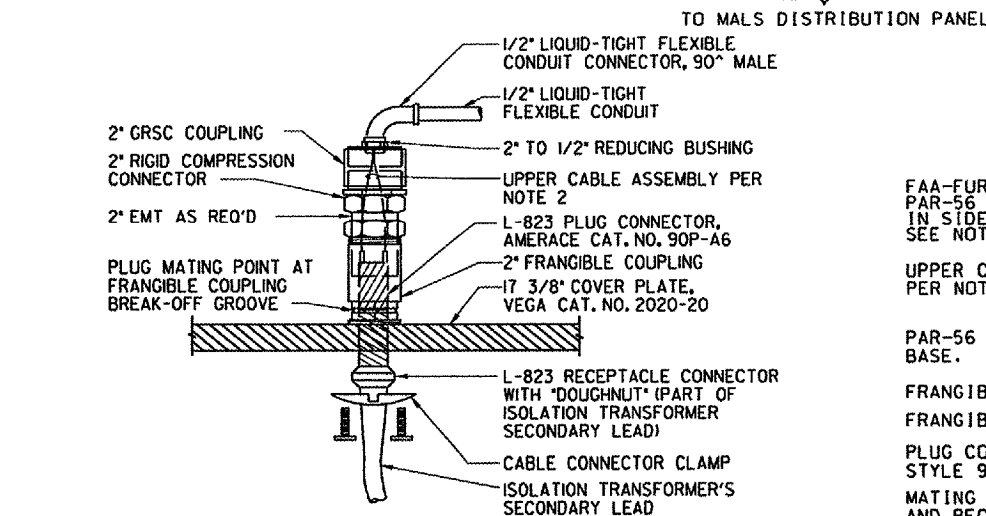
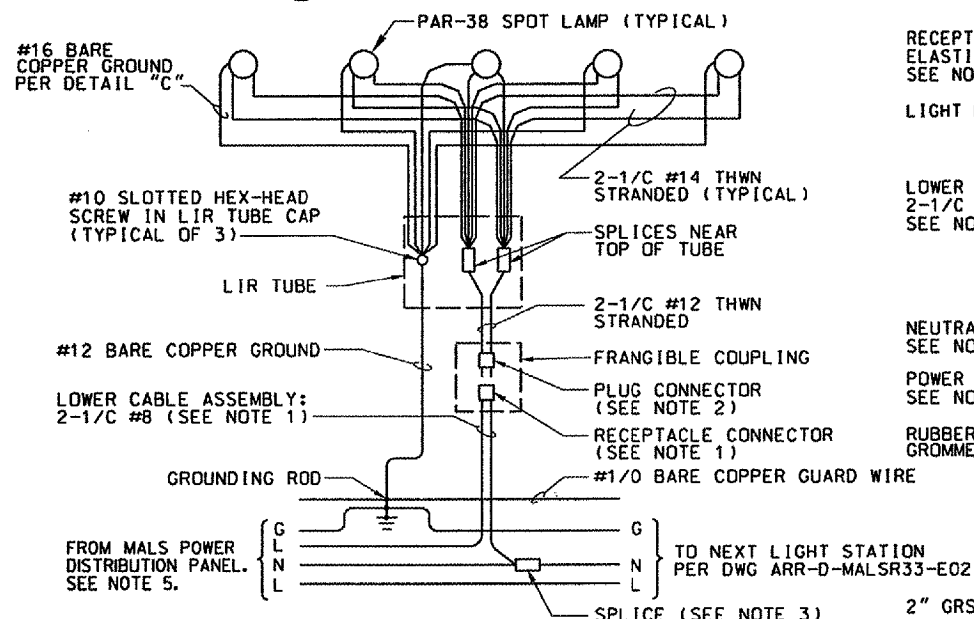


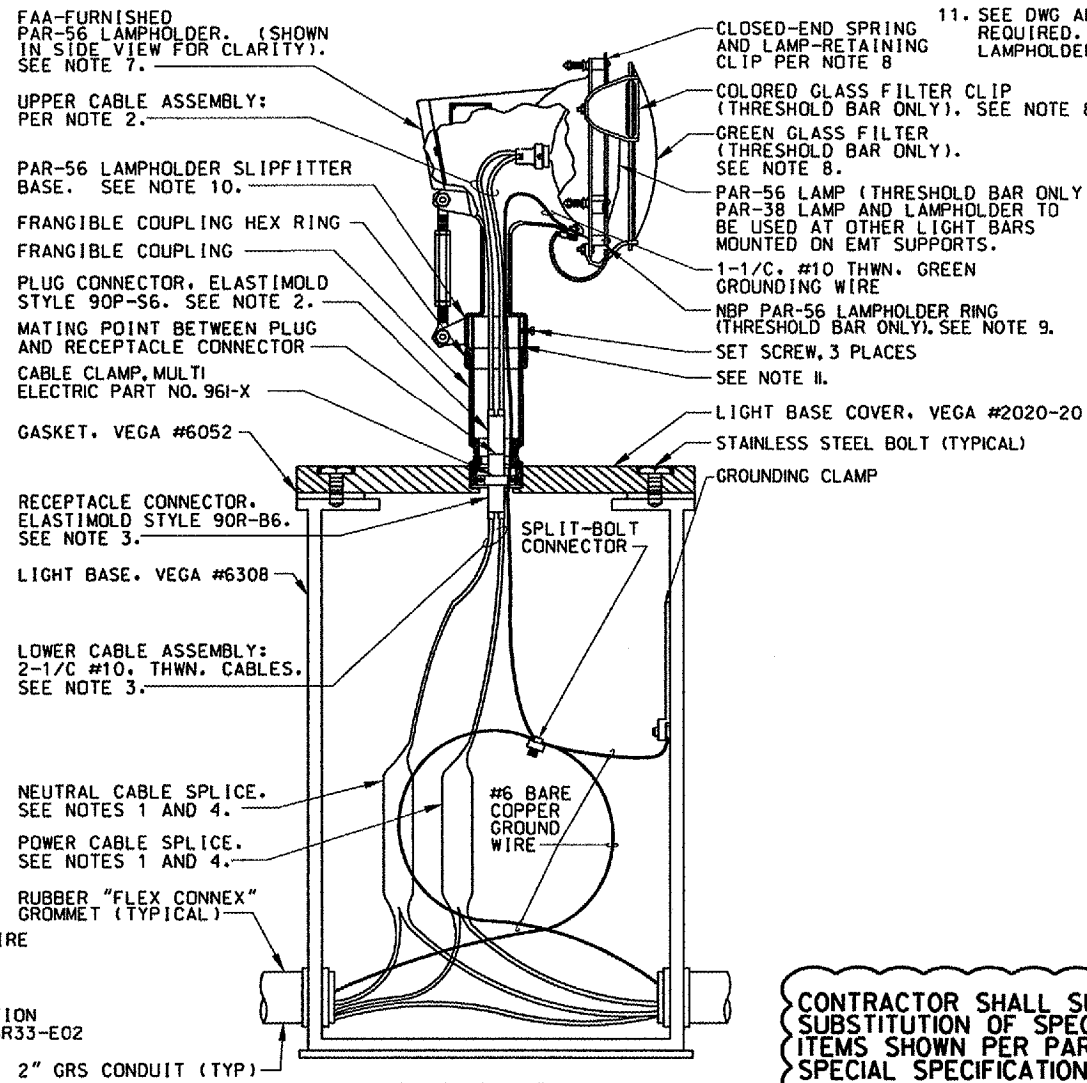
1 DETAIL
NOT TO SCALE



2 DETAIL
NOT TO SCALE



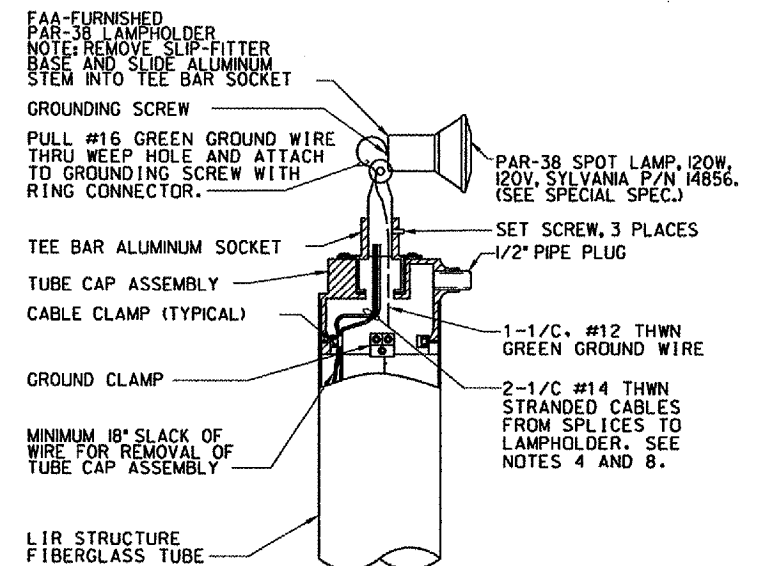
3 DETAIL
NOT TO SCALE



4 DETAIL
NOT TO SCALE

NOTES:

1. EACH CURRENT-CARRYING CABLE MAKING A CONNECTION IN THE LIGHT BASE SHALL HAVE A MINIMUM 4' SLACK LOOP COILED NEATLY INSIDE THE LIGHT BASE. (SLACK LOOP NOT REQUIRED FOR CABLE PASSING THROUGH LIGHT BASE WITHOUT CONNECTION).
2. THE UPPER CABLE ASSEMBLY SHALL BE 2-1/2\"/>



5 DETAIL
NOT TO SCALE

CONTRACTOR SHALL SUBMIT REQUESTS FOR SUBSTITUTION OF SPECIFIC MANUFACTURER'S ITEMS SHOWN PER PARAGRAPH 1 OF THE SPECIAL SPECIFICATIONS.

REV	DATE	DESCRIPTION	JCN	REDLINE DATE	APVD

SHEET 38 OF 66

DEPARTMENT OF TRANSPORTATION
FEDERAL AVIATION ADMINISTRATION
GREAT LAKES REGION CHICAGO, ILLINOIS

MALSR
WIRING DIAGRAMS FOR
STEADY-BURNING LIGHT BARS
RUNWAY 33

AURORA		AURORA MUNICIPAL AIRPORT		IL
REVIEWED BY	SUBMITTED BY	APPROVED BY		
DESIGNED	TAD	ISSUED BY	DATE	JCN
			02/21/2006	
DRAWN	TAD	IMPLEMENTATION	DRAWING NO	REV
CHECKED	EGS	CENTER	ARR-D-MALSR33-E01	

I:\newcomp\0428504\draw\sheet\101.dwg 3:56:06 PM ARR-D-MALSR33-E01.dwg
 3/16/2006 3:49:18 PM NAME