

CONTRACTOR SHALL SUBMIT REQUESTS FOR SUBSTITUTION OF SPECIFIC MANUFACTURER'S ITEMS SHOWN PER PARAGRAPH 1 OF THE SPECIAL SPECIFICATIONS.

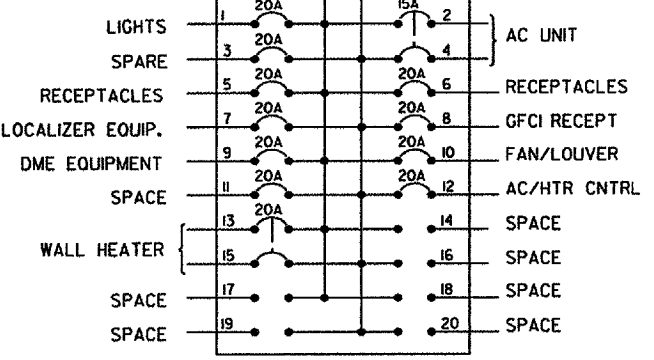
THIS WIRING IS INSTALLED BY THE SHELTER MANUFACTURER PRIOR TO SHIPPING TO SITE.

THIS WIRING IS INSTALLED BY THE SHELTER MANUFACTURER PRIOR TO SHIPPING TO SITE.

THIS WIRING IS INSTALLED BY THE SHELTER MANUFACTURER PRIOR TO SHIPPING TO SITE.

DISCONNECT SWITCH
(HEAVY DUTY, 240 VAC, 2-WIRE, 100A, SQUARE D CAT NO H223A FUSED AT 80A WITH DUAL-ELEMENT BUSSMANN FUSETRON FUSES.) SEE NOTE 8.

THIS WIRING IS INSTALLED BY THE SHELTER MANUFACTURER PRIOR TO SHIPPING TO SITE.

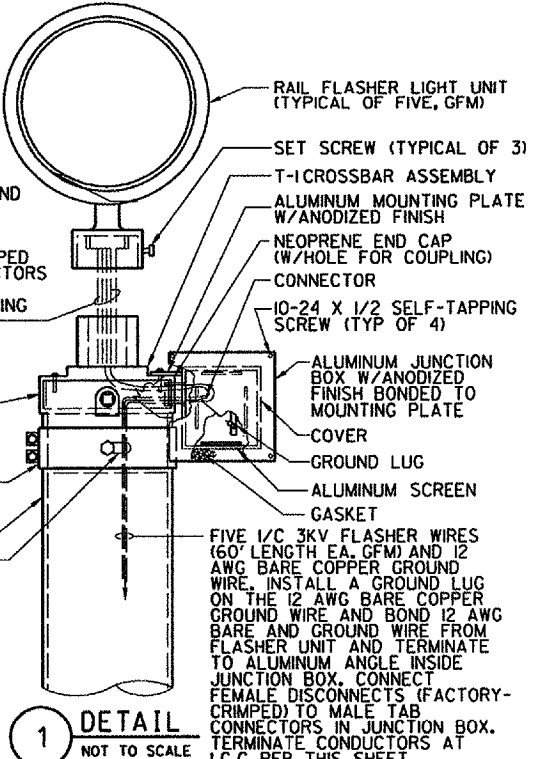
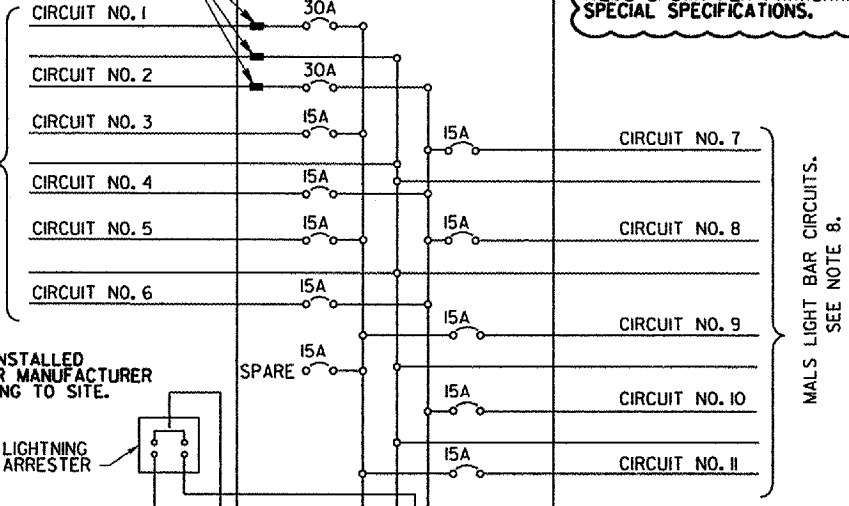


MALS CONTROL CABINET TYPE FA-10151

15 KVA MALS TRANSFORMER

MALS DISCONNECT SWITCH
(SQUARE D CAT NO H223A WITH 80A BUSSMANN FUSETRON FUSES) SEE NOTE 8.

MALS POWER DISTRIBUTION PANEL



SIX 1/8 3KV FLASHER WIRES FACTORY-WIRED FROM FLASHER LIGHT UNIT, FIVE WIRES W/MALE TAB CONNECTORS AND ONE GROUND WIRE W/SPADE CONNECTOR, ALL FACTORY-CRIMPED ON ENDS. CONNECT FLASHER WIRES INSIDE JUNCTION BOX TO FACTORY-CRIMPED FEMALE DISCONNECTS ON CONDUCTORS FROM ICC. CONNECT GROUND WIRE W/SPADE CONNECTOR TO GROUNDING LUG IN JUNCTION BOX.

RAIL FLASHER LAMP AND L-5000 JUNCTION BOX ASSEMBLY

NOTE: CONTRACTOR SHALL FURNISH AND INSTALL JAQUITH P/N L-500 JUNCTION BOX ASSEMBLY, CONSISTING OF BOX, COVER, GASKET, SCREWS, T-CROSSBAR ASSEMBLY, AND MOUNTING PLATE.

NOTES:

- THE FLASHERS FIRE IN SEQUENCE TOWARD THE RUNWAY, STARTING AT THE OUTERMOST UNIT. CONTROL TERMINALS 9 (MEDIUM INTENSITY STEP) AND 10 (HIGH INTENSITY STEP) ARE COMMON FOR ALL FLASHERS. EACH FLASHER REQUIRES AN INDIVIDUAL CONDUCTOR FOR THE TRIGGER CIRCUIT.
- WHERE THIS DRAWING DIFFERS FROM THE MANUFACTURER'S INSTRUCTION BOOK, CONNECTIONS ARE MADE PER THIS DRAWING.
- THE WIRES RUNNING FROM EACH FLASHER INDIVIDUAL CONTROL CABINET (ICC) TO THE FLASHER SPADE LUG CONNECTORS ARE 1/8, 3000V WIRES WHICH ARE PROVIDED WITH THE FLASHER ICC.
- ONE 6 AWG BARE COPPER GROUNDING CONDUCTOR RUNS TO A SHELTER PERIMETER GROUNDING ELECTRODE, FROM MALS TRANSFORMER TO SUBGRADE, THE CONDUCTOR RUNS IN A SEPARATE CONDUIT.
- CONNECTION SHALL BE MADE TO THE TRANSFORMER TAP WHICH PROVIDES THE VOLTAGE CLOSEST TO 120/240V AT THE MALS DISTRIBUTION PANEL WHEN LAMPS ARE BURNING AT THE HIGH BRIGHTNESS STEP.
- THE SHELTER POWER PANEL IS INSTALLED AND WIRED BY THE SHELTER MANUFACTURER PRIOR TO SHIPPING TO SITE.
- THE 3/0 AWG MALS THRESHOLD BAR CABLE IS SPLICED TO AN 8 AWG STRANDED CABLE, TO FIT THE LUGS OF THE 30A BREAKER, FOR THE SPLICE, USE A BURNDY INSULINK SLEEVE-TYPE PRE-INSULATED COMPRESSION CONNECTOR, SIZED FOR THE APPLICATION, AN APPROVED ALTERNATE SPLICE IS A TAPE-WRAPPED SPLICE, USING COMPACT COMPRESSION CONNECTORS DESIGNED TO TAP SMALL LIGHTING WIRES FROM SECONDARIES. BURNDY CRIMPIT STREET LIGHTING TAP, CAT. NO. YPC26R8U IS APPROVED FOR THIS PURPOSE. SUFFICIENT TAPE WRAPS SHALL BE APPLIED TO EQUAL OR EXCEED 600V INSULATION.
- THESE SQUARE "D" HEAVY DUTY DISCONNECT SWITCHES ARE INSTALLED AND WIRED BY THE SHELTER MANUFACTURER PRIOR TO SHIPPING TO SITE.

DEPARTMENT OF TRANSPORTATION FEDERAL AVIATION ADMINISTRATION GREAT LAKES REGION				CHICAGO, ILLINOIS	
MALS R					
EQUIPMENT WIRING DIAGRAM RUNWAY 33					
AURORA		AURORA MUNICIPAL AIRPORT		IL	
REVIEWED BY	SUBMITTED BY	APPROVED BY			
DESIGNED	DATE	ISSUED BY	DATE	PLATFORM MGR.	IMPLEMENTATION
DRAWN	TAD	CHICAGO NAS	02/21/2006	JCN	
CHECKED	EGS	IMPLEMENTATION CENTER	DRAWING NO		
			ARR-D-MALSRR33-E03		

I:\aurocorp\0428504\Draw\Sheet\100 in dr\shggs 3-4-06\ARR-D-MALSRR33-E03.dgn
 3/16/2006 3:49:22 PM SUNE8
 000250