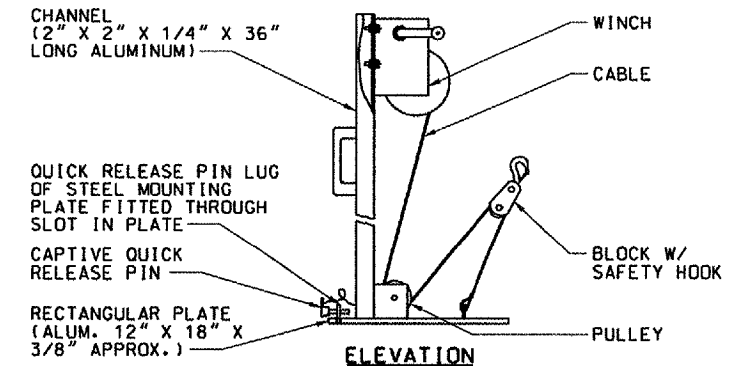
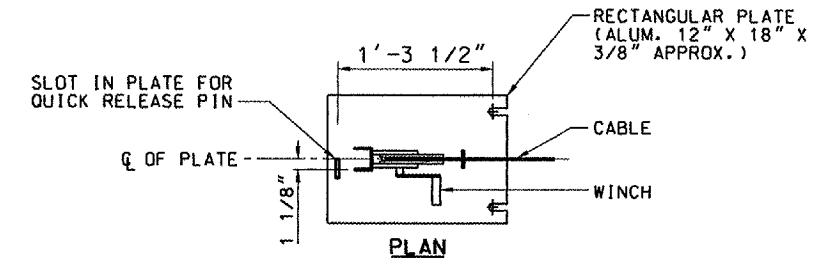
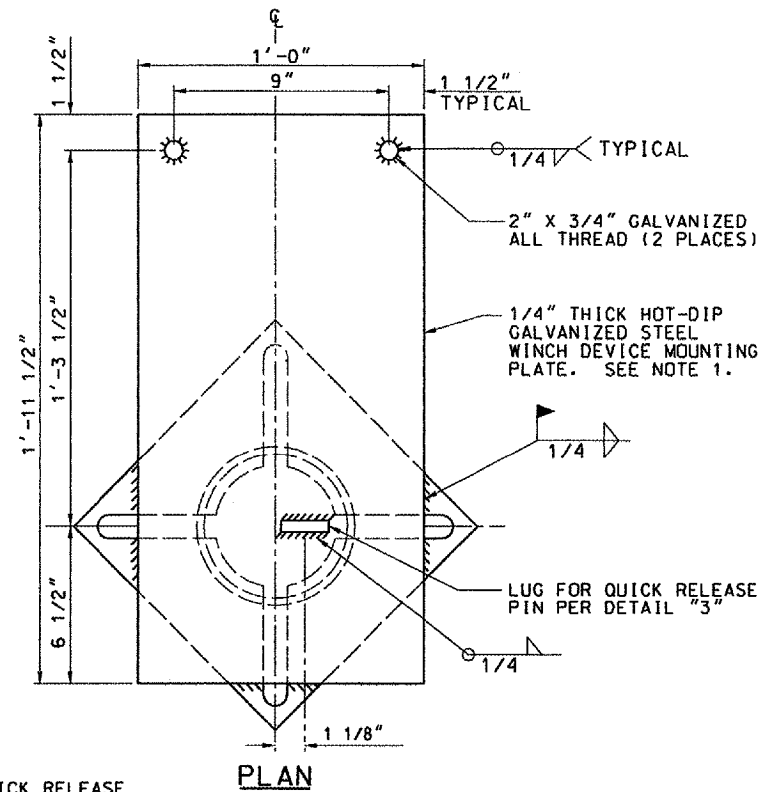
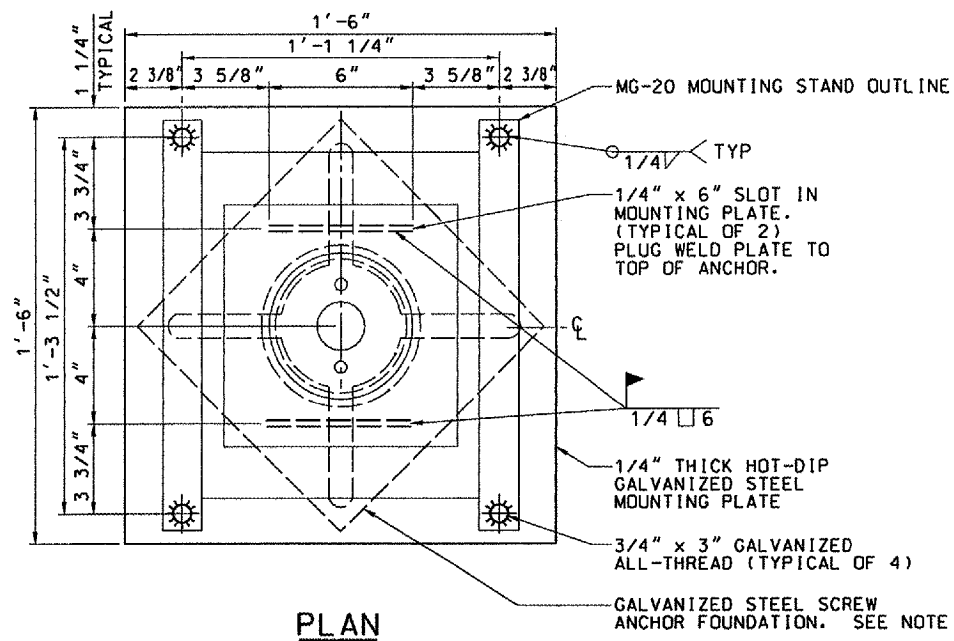
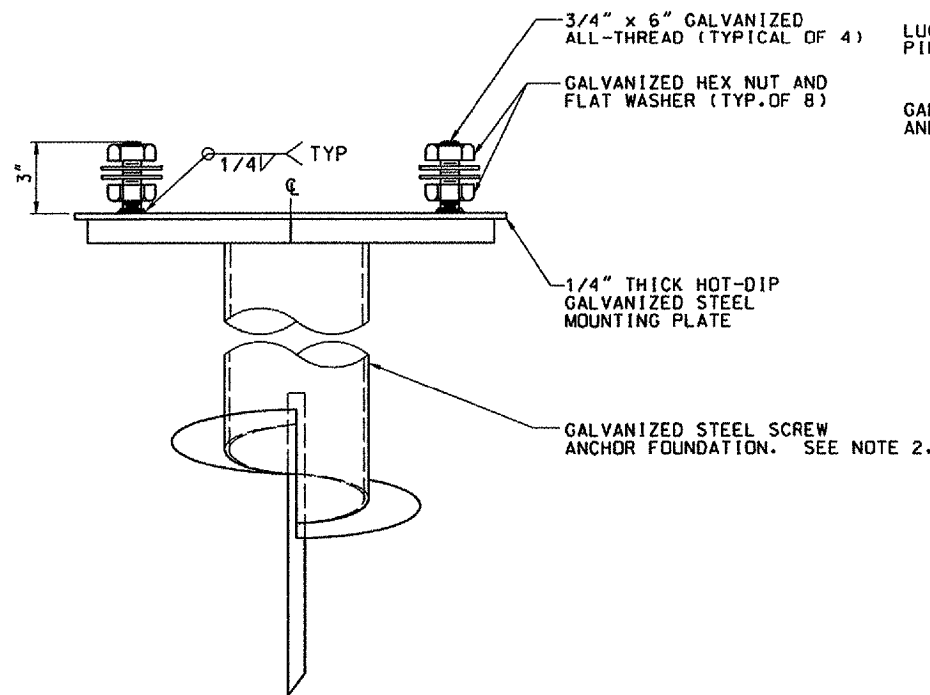


**NOTES:**

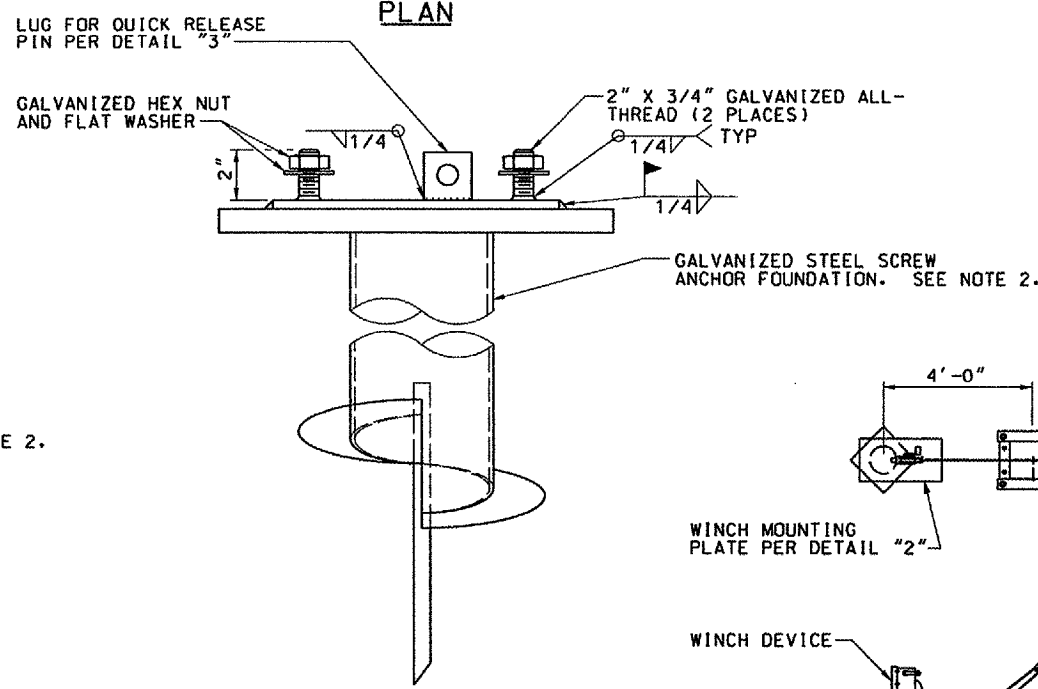
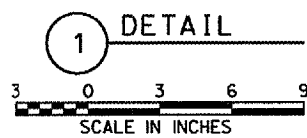
- WINCH IS PROVIDED BY THE FAA WITH MALSR EQUIPMENT; DETAILS ARE FOR REFERENCE ONLY. WINCH SHALL BE DELIVERED TO RESIDENT ENGINEER AFTER TOWER INSTALLATION.
- SCREW ANCHOR FOUNDATIONS SHALL BE STEEL STREETLIGHT FOUNDATIONS, A.B. CHANCE CAT. NO. CT112-0262. SEE THE SECTION 130 OF THE SPECIFICATION FAA-GL-918C FOR INSTRUCTIONS REGARDING INSTALLATION OF THE SCREW ANCHORS.



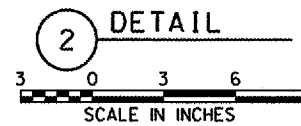
**4** DETAIL  
NOT TO SCALE  
**WINCH DEVICE ATTACHED TO MOUNTING STAND ILLUSTRATION**  
SEE NOTE 1



**ELEVATION**  
**MG-20 MOUNTING PLATE**

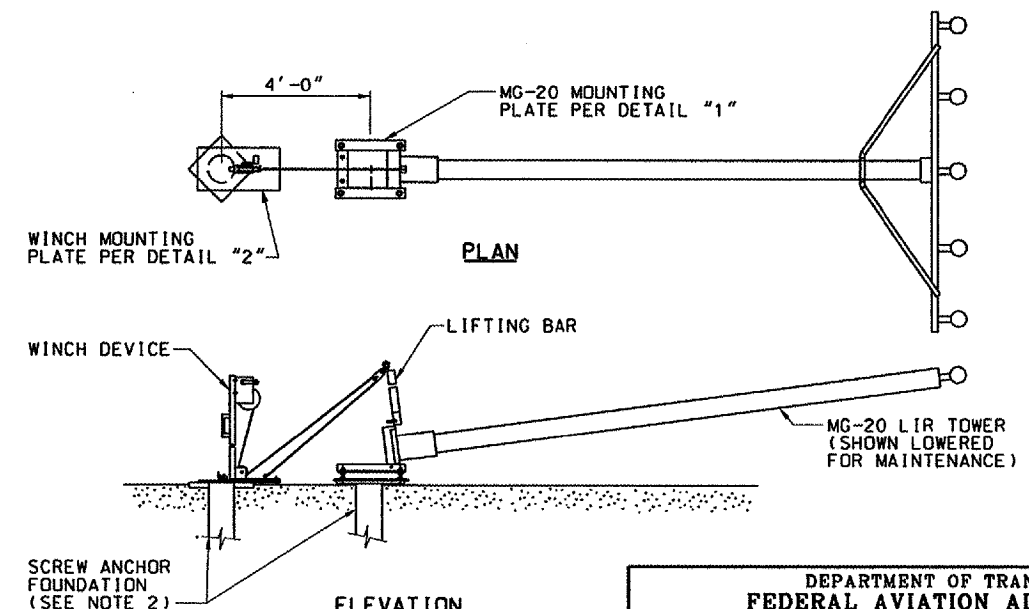


**ELEVATION**  
**WINCH MOUNTING PLATE**



**LUG FOR QUICK RELEASE PIN**

**3** DETAIL  
NOT TO SCALE



**ELEVATION**  
**WINCH OPERATION ILLUSTRATION**

**5** DETAIL  
NOT TO SCALE

CONTRACTOR SHALL SUBMIT REQUESTS FOR SUBSTITUTION OF SPECIFIC MANUFACTURER'S ITEMS SHOWN PER PARAGRAPH 1 OF THE SPECIAL SPECIFICATIONS.

DEPARTMENT OF TRANSPORTATION  
FEDERAL AVIATION ADMINISTRATION  
GREAT LAKES REGION CHICAGO, ILLINOIS

MALSR  
MOUNTING PLATE FABRICATION DETAILS  
FOR MG-20 LIR TOWER AND WINCH  
RUNWAY 33

REVIEWED BY	SUBMITTED BY	APPROVED BY
DESIGNED BY	ISSUED BY	DATE
DRAWN BY	CHICAGO NAS IMPLEMENTATION CENTER	02/27/2006
CHECKED BY	EGS	ARR-D-MALSR33-S03

REV	DATE	DESCRIPTION	JCN	REDLINE DATE	APVD