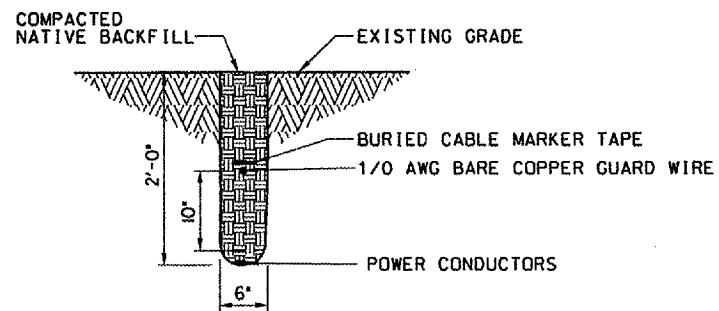
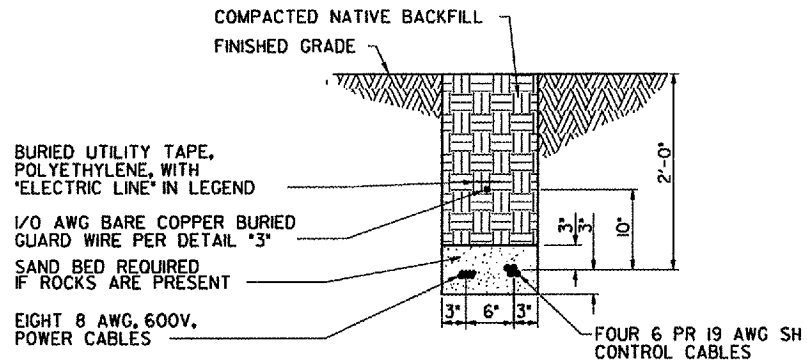
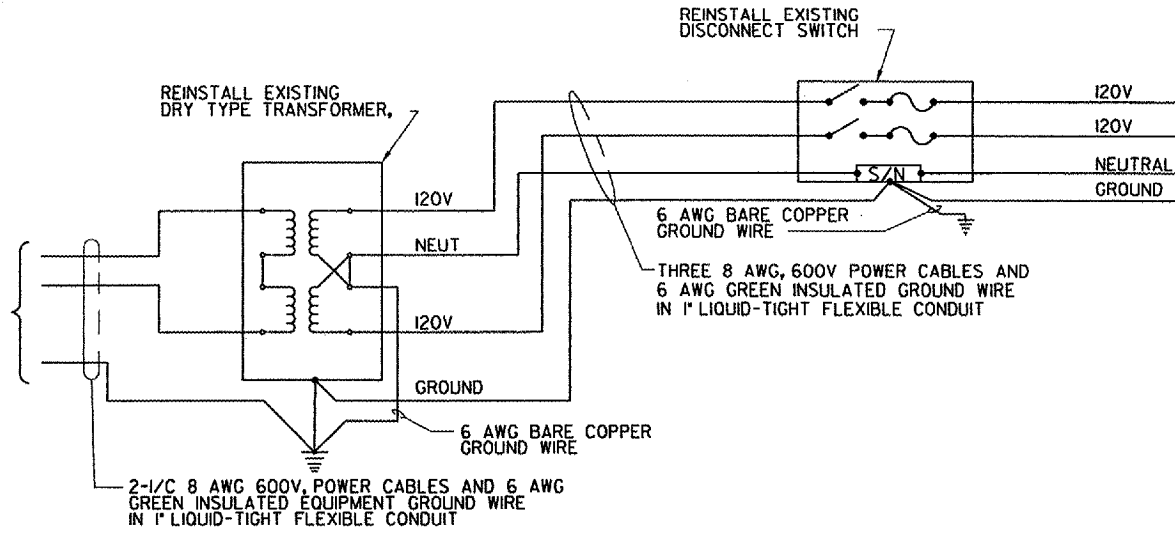
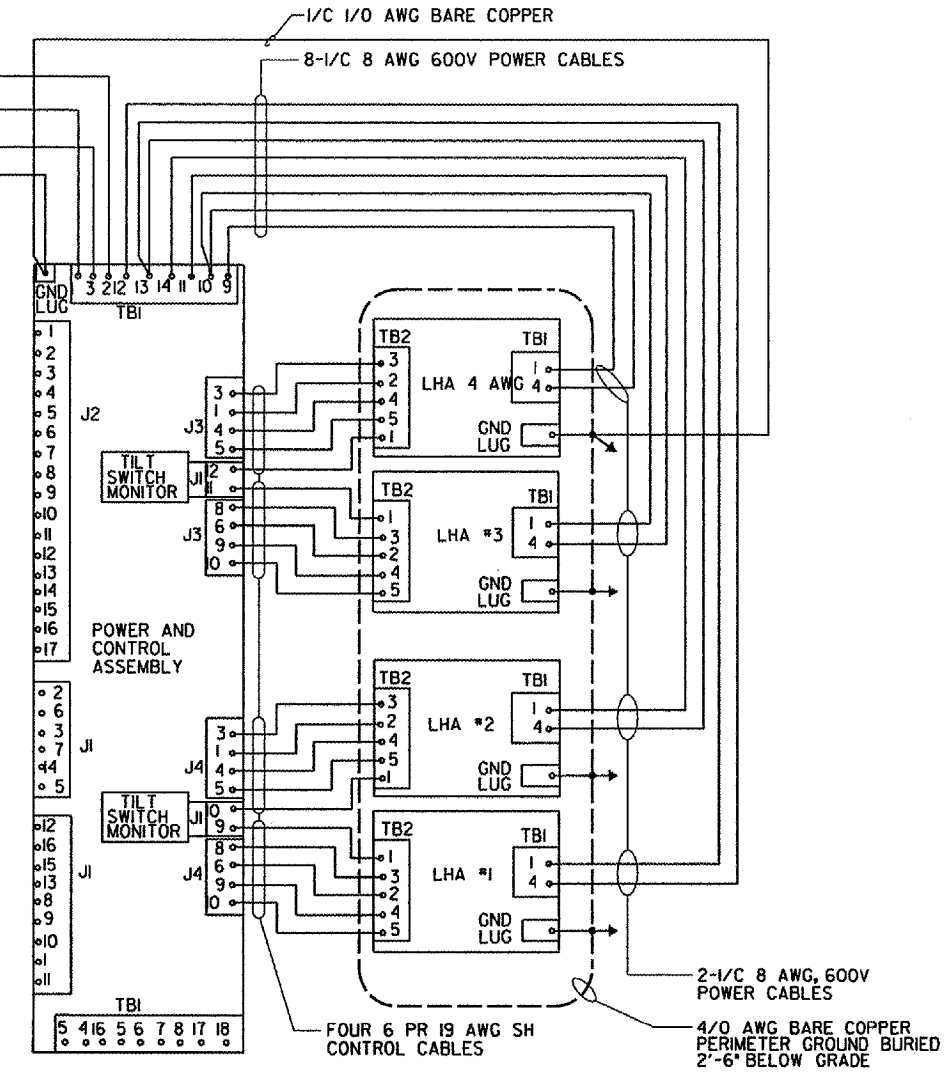


H  
G  
F  
E  
D  
C  
B  
A

SEE DWG ARR-D-PAPI-COIFOR CONTINUATION OF POWER CABLES TO POWER SOURCE AT RUNWAY 9 GLIDE SLOPE EQUIPMENT SHELTER



NOTE:  
RMS SYSTEM WILL NOT BE RE-INSTALLED. DELIVER RMS CABINET TO FAA SSC REPRESENTATIVE DAN GEIST FOR STORAGE.



DEPARTMENT OF TRANSPORTATION  
FEDERAL AVIATION ADMINISTRATION  
GREAT LAKES REGION CHICAGO, ILLINOIS

PAPI  
SYSTEM WIRING DIAGRAM  
RUNWAY 33

AURORA AURORA MUNICIPAL AIRPORT IL

REVIEWED BY SUBMITTED BY APPROVED BY

PROJ ENGR, TIMOTHY DYER PLATFORM MGR, CLELAND MICHEEL

DESIGNED TAD ISSUED BY DATE 02/21/2006 JCN

DRAWN TAD CHICAGO NAS IMPLEMENTATION CENTER DRAWING NO

CHECKED EGS

ARR-D-PAPI33-E01

CONTRACTOR SHALL SUBMIT REQUESTS FOR SUBSTITUTION OF SPECIFIC MANUFACTURER'S ITEMS SHOWN PER PARAGRAPH 1 OF THE SPECIAL SPECIFICATIONS.

REV	DATE	DESCRIPTION	JCN	REDLINE DATE	APPROV

K:\aerodoc\0428041\work\sheet\0428041.dwg 3-6-05 ARR-D-PAPI33-EO1.dwg  
 3/18/2005 3:48:35 PM BMM/ES  
 88725