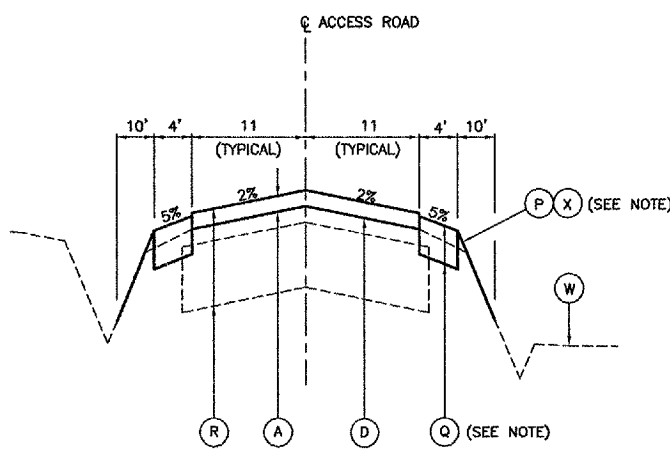
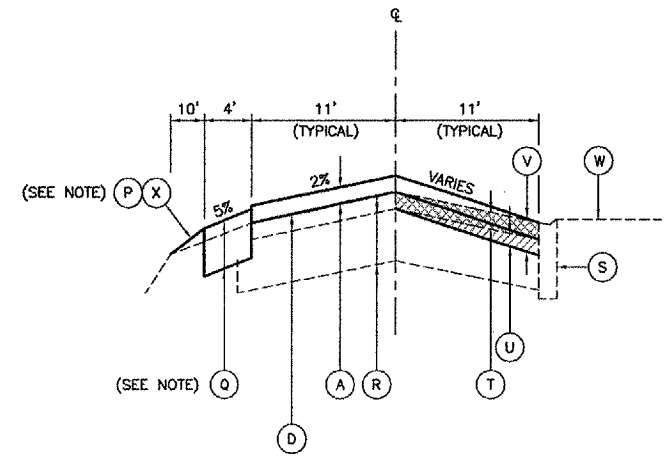


**SECTION A - A
 DUPAGE DRIVE EXTENSION**
 NOT TO SCALE



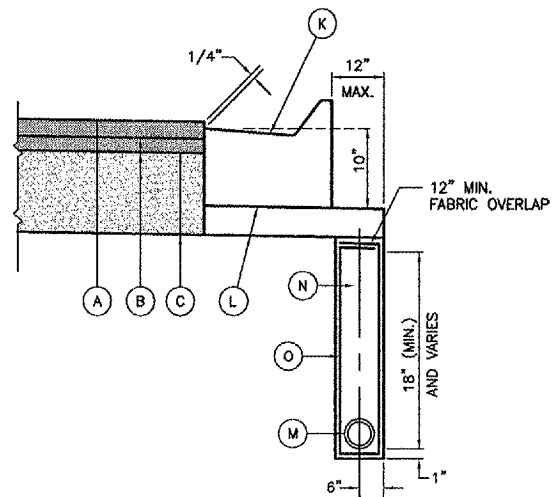
**SECTION B - B
 FREEDOM DRIVE OVERLAY**
 NOT TO SCALE

NOTE: EARTH EXCAVATION AND FILL FOR 4' WIDE CRUSHED AGGREGATE SHOULDER - 6" SHALL BE CONSIDERED INCIDENTAL.



**SECTION C - C
 FREEDOM DRIVE OVERLAY**
 NOT TO SCALE

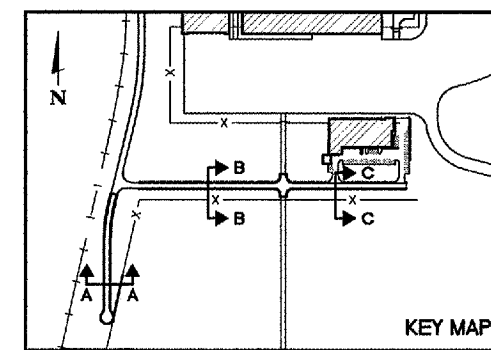
NOTE: EARTH EXCAVATION AND FILL FOR 4' WIDE CRUSHED AGGREGATE SHOULDER - 6" SHALL BE CONSIDERED INCIDENTAL.



**UNDERDRAIN/BACK OF CURB/
 EDGE OF PAVEMENT DETAIL**
 NOT TO SCALE

LEGEND

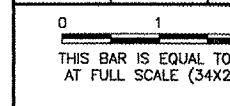
- (A) NEW 2" BITUMINOUS SURFACE COURSE (1 LIFT)(401)
- (B) NEW 2" BITUMINOUS BASE COURSE (1 LIFT)(201)
- (C) NEW 10" CRUSHED AGGREGATE BASE COURSE (2 LIFTS)(209)
- (D) NEW TACK COAT (603)
- (E) NEW PRIME COAT (602)
- (F) NEW 12" (AVG.) TOPSOIL STRIPPING (152)
- (G) NEW UNCLASSIFIED EXCAVATION (152)
- (H) NEW EMBANKMENT FILL (152)
- (I) NEW SHOULDER FILL (152)
- (J) NEW 4" MINIMUM TOPSOIL PLACEMENT (152) (INCIDENTAL TO UNCLASSIFIED EXCAVATION)
- (K) NEW M-6.18 COMBINATION CONCRETE CURB AND GUTTER (754)
- (L) NEW CRUSHED AGGREGATE BASE COURSE (209 MATERIAL) 4" MIN. THICKNESS (INCIDENTAL TO CURB)
- (M) NEW 6" PERFORATED UNDERDRAIN W/SOCK (705) (SOCK INCIDENTAL TO UNDERDRAIN)
- (N) NEW POROUS BACKFILL (705) (INCIDENTAL TO UNDERDRAIN)
- (O) NEW UNDERDRAIN TRENCH FABRIC ENVELOPE (705) (INCIDENTAL TO UNDERDRAIN)
- (P) NEW SEEDING (901) AND SOIL GUARD (800)
- (Q) NEW 4' WIDE CRUSHED AGGREGATE SHOULDER - 6" (209)
- (R) EXISTING 2" BITUMINOUS BASE ON 10" CRUSHED AGGREGATE BASE.
- (S) EXISTING DEPRESSED CURB AND GUTTER DRIVE ENTRANCE
- (T) REMOVE BITUMINOUS PAVEMENT (2"-4")
- (U) EXISTING CRUSHED AGGREGATE BASE COURSE REMOVAL (COST INCIDENTAL TO AR401900)
- (V) NEW 4" BITUMINOUS SURFACE COURSE (2 LIFTS)(401)
- (W) EXISTING GROUNDLINE
- (X) NEW GROUNDLINE (SEE NOTE)



KEY MAP

REVISIONS

NUMBER	BY	DATE



**DUPAGE AIRPORT
 WEST CHICAGO, ILLINOIS
 ROADWAY IMPROVEMENTS FOR SOUTH FLIGHT CENTER
 DEVELOPMENT - PHASE 1**

TYPICAL SECTIONS

© Copyright CMT, Inc.
CMT
 CRAWFORD, MURPHY & TILLY, INC.
 CONSULTING ENGINEERS
 License No. 04-P-000615



DESIGN BY:	MJS/JRL
DRAWN BY:	JRO
CHECKED BY:	JRL
APPROVED BY:	DLP
DATE:	03/03/06
JOB No:	05257-02