

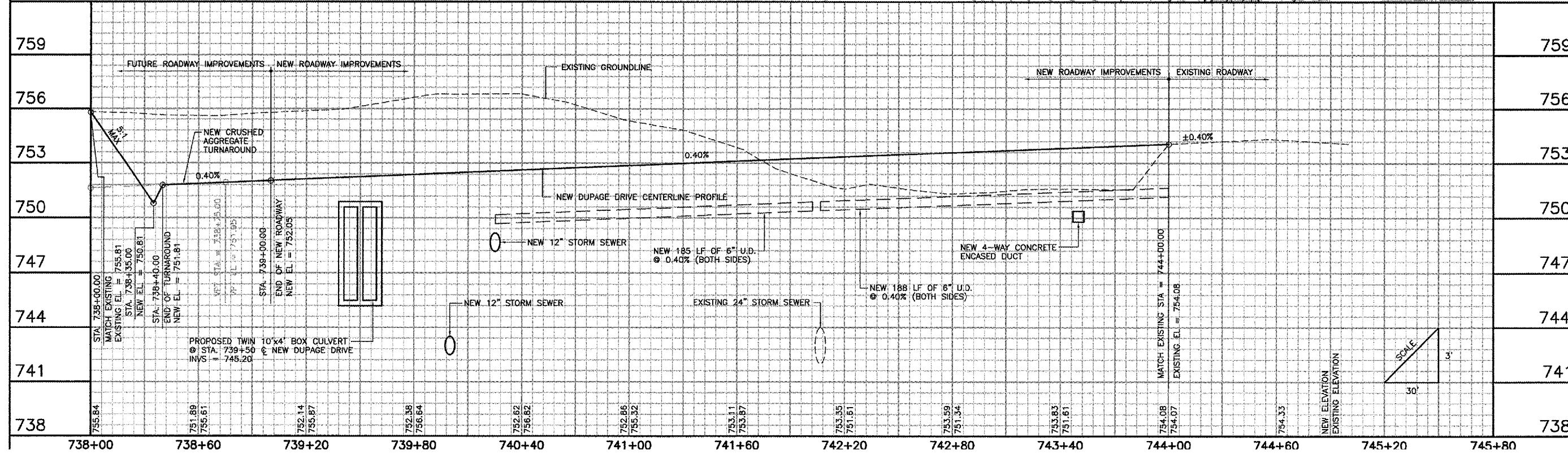
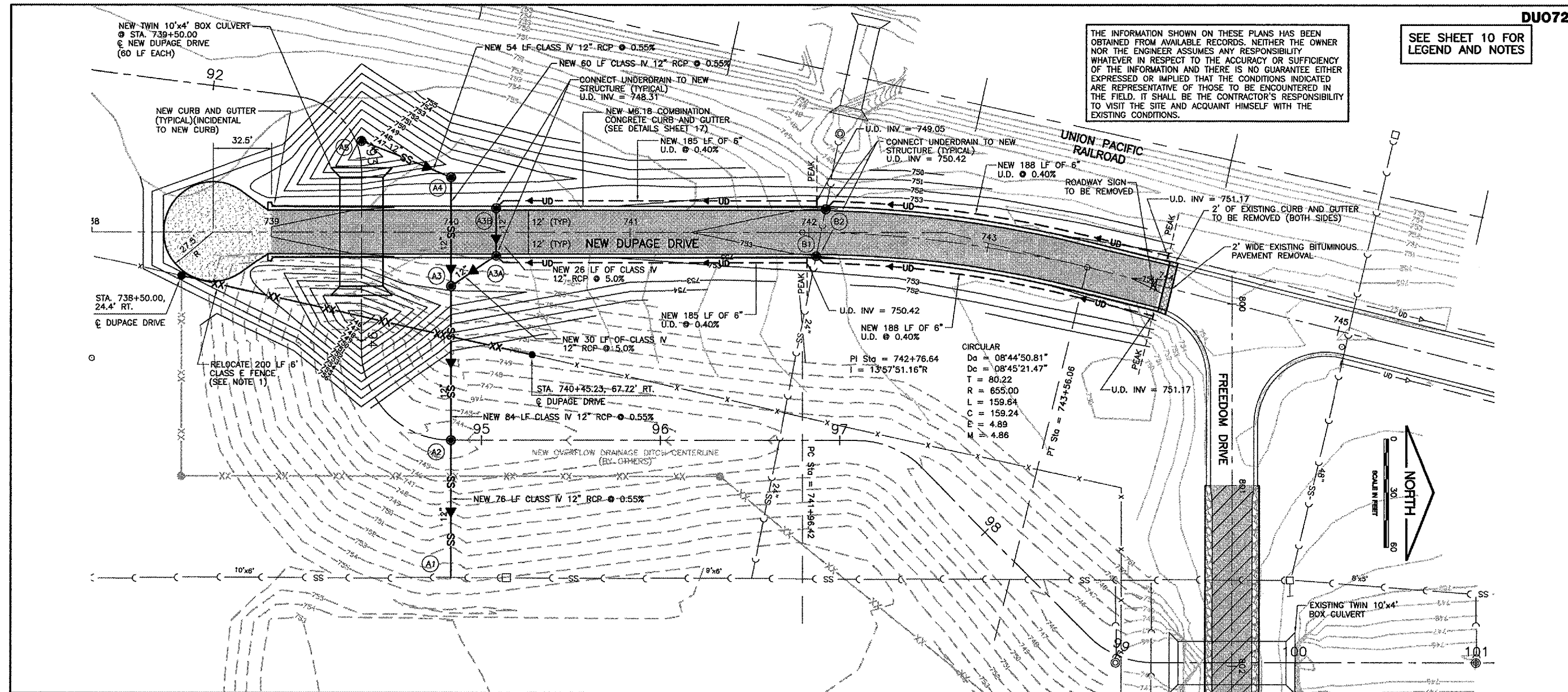
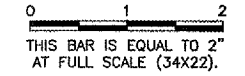
DU072

K:\DupageAp\0525702\Draw\Sheets\FILE: RCp01001.dwg
 LAYOUT: Layout1
 UPDATE BY: jinke
 SURVEY BOOK #
 DATE: Tue 3/7/06 1:21pm
 XREF DWG: tbcint.dwg
 tb.dwg
 tbrprgrd.dwg
 p-topo.dwg
 roadbase.dwg
 e-topo.dwg

SEE SHEET 10 FOR
 LEGEND AND NOTES

THE INFORMATION SHOWN ON THESE PLANS HAS BEEN OBTAINED FROM AVAILABLE RECORDS. NEITHER THE OWNER NOR THE ENGINEER ASSUMES ANY RESPONSIBILITY WHATSOEVER IN RESPECT TO THE ACCURACY OR SUFFICIENCY OF THE INFORMATION AND THERE IS NO GUARANTEE EITHER EXPRESSED OR IMPLIED THAT THE CONDITIONS INDICATED ARE REPRESENTATIVE OF THOSE TO BE ENCOUNTERED IN THE FIELD. IT SHALL BE THE CONTRACTOR'S RESPONSIBILITY TO VISIT THE SITE AND ACQUAINT HIMSELF WITH THE EXISTING CONDITIONS.

REVISIONS		
NUMBER	BY	DATE



**DUPAGE AIRPORT
 WEST CHICAGO, ILLINOIS
 ROADWAY IMPROVEMENTS FOR SOUTH FLIGHT CENTER
 DEVELOPMENT - PHASE 1**

**PLAN AND PROFILE
 DUPAGE DRIVE EXTENSION**

© Copyright CMT, Inc.

CMT
 CRAWFORD, MURPHY & TILLY, INC.
 CONSULTING ENGINEERS
 License No. 184-000613

DPA
 DuPage Airport

DESIGN BY:	JRL / MJS
DRAWN BY:	JRL / MJS
CHECKED BY:	JRL
APPROVED BY:	DLP
DATE:	03/03/06
JOB No:	05257-02