

| REVISIONS | | |
|-----------|----|------|
| NUMBER | BY | DATE |
| | | |
| | | |
| | | |

0 1 2
 THIS BAR IS EQUAL TO 2"
 AT FULL SCALE (34X22).

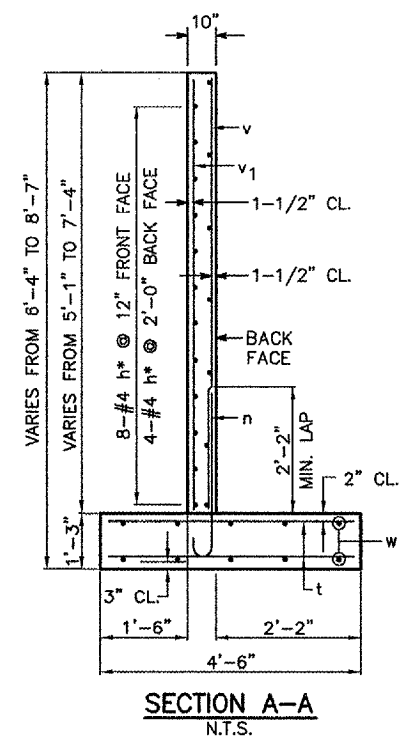
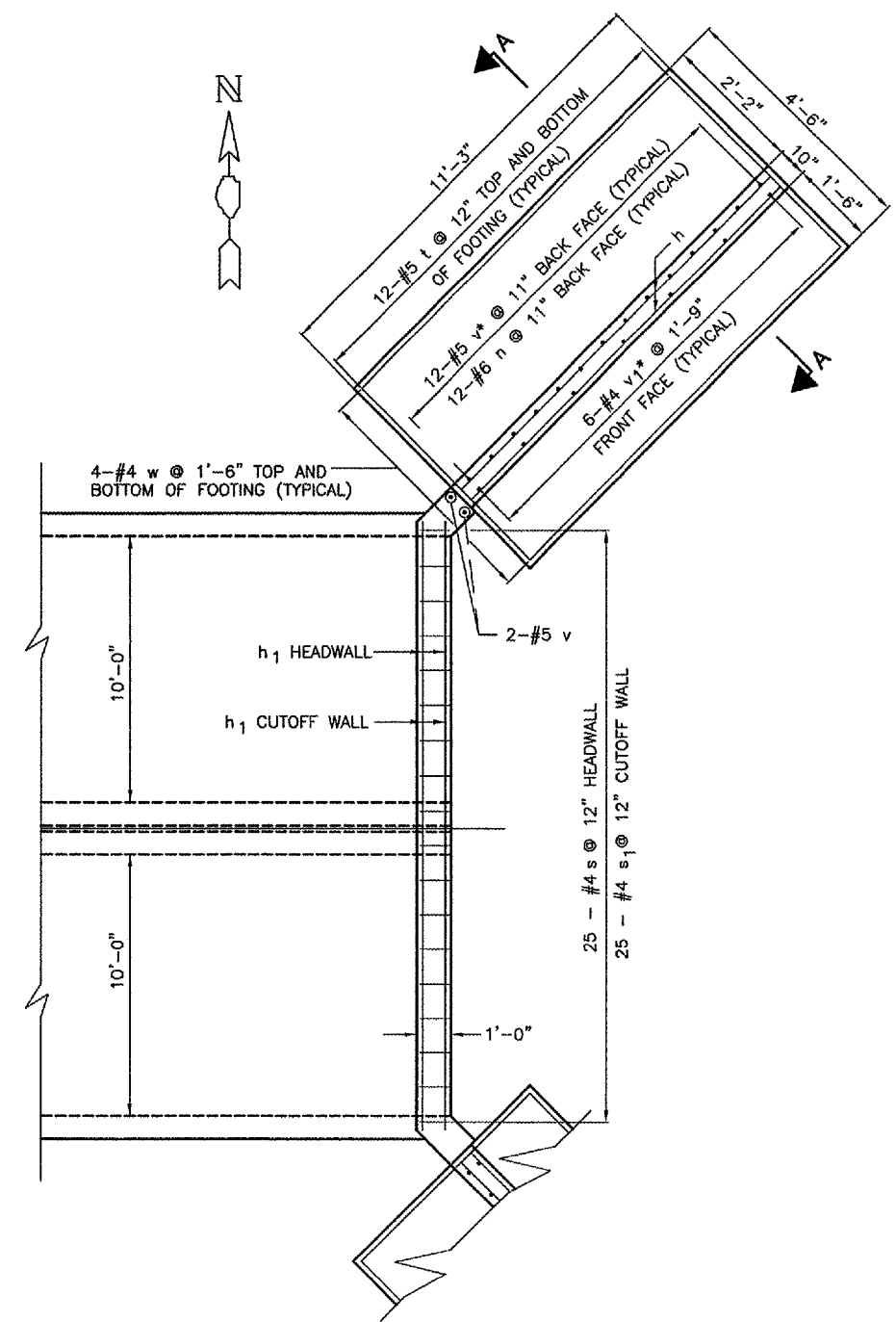
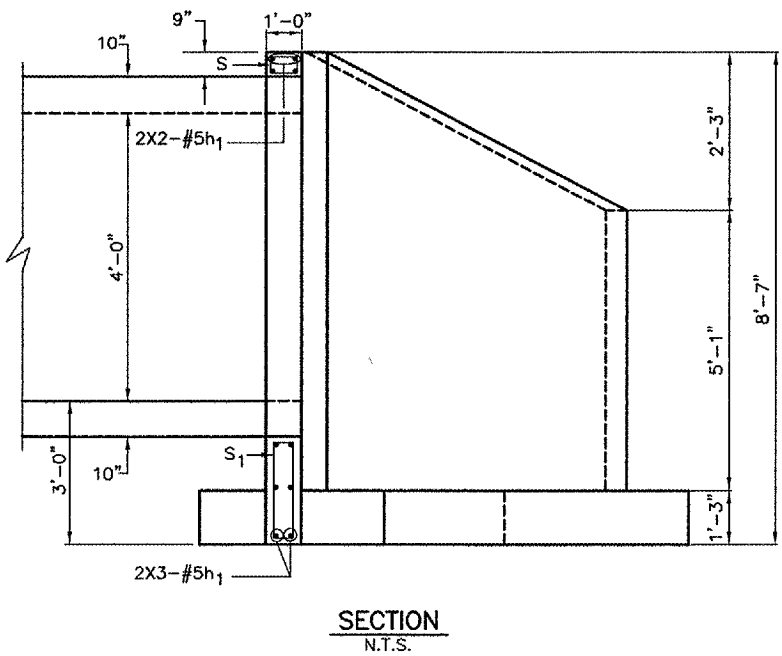
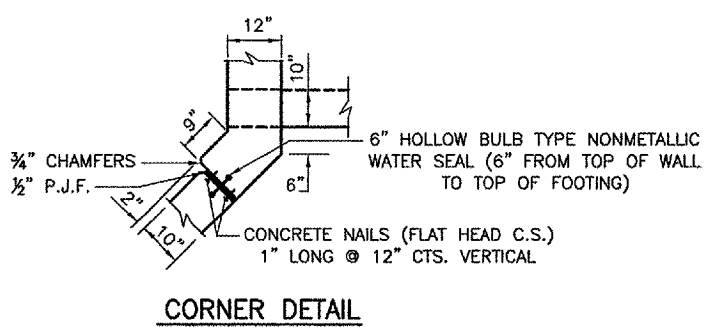
**DUPAGE AIRPORT
 WEST CHICAGO, ILLINOIS
 ROADWAY IMPROVEMENTS FOR SOUTH FLIGHT CENTER
 DEVELOPMENT - PHASE 1**

BOX CULVERT END SECTION DETAILS

© Copyright CMT, Inc.
CMT
 CRAWFORD, MURPHY & TILLY, INC.
 CONSULTING ENGINEERS
 License No. 194-000613

DPA
 DuPage Airport

DESIGN BY: ATI/JRL
 DRAWN BY: ATI
 CHECKED BY: ATI/JRL
 APPROVED BY: DLP
 DATE: 03/03/06
 JOB No: 05257-02



BILL OF MATERIAL
(FOR INFORMATION ONLY)

| BAR | NO. | SIZE | LENTGH | SHAPE | |
|--------------------|-----|------|---------|-------|-------|
| h | 48 | #4 | 11'-0" | — | |
| h1 | 20 | #5 | 24'-3" | — | |
| n | 48 | #5 | 2'-9" | C | |
| s | 50 | #4 | 3'-3" | L | |
| s1 | 50 | #4 | 5'-11" | L | |
| t | 96 | #5 | 4'-2" | — | |
| v | 48 | #5 | 7'-0" | — | |
| v1 | 24 | #4 | 7'-0" | — | |
| w | 32 | #4 | 10'-11" | — | |
| REINFORCEMENT BARS | | | | POUND | 2,420 |

