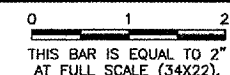


REVISIONS		
NUMBER	BY	DATE



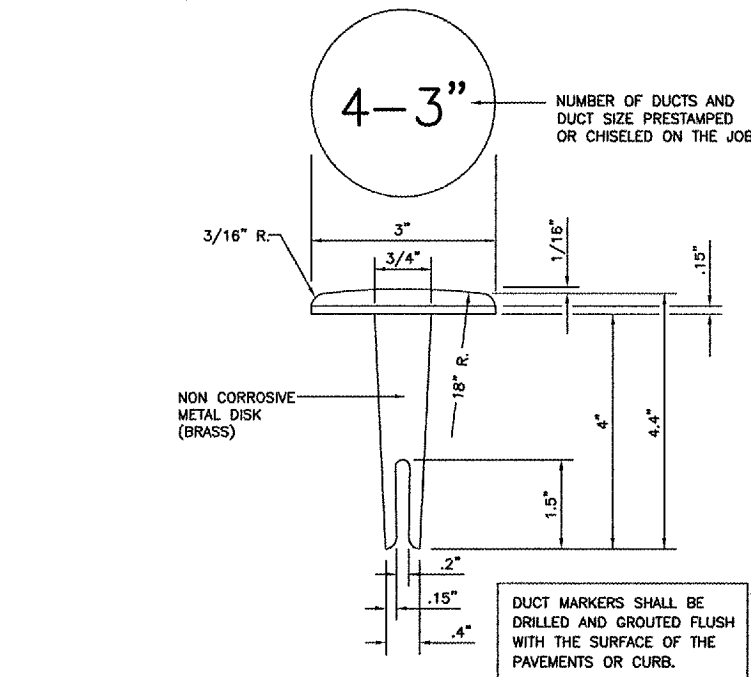
**DUPAGE AIRPORT
 WEST CHICAGO, ILLINOIS
 ROADWAY IMPROVEMENTS FOR SOUTH FLIGHT CENTER
 DEVELOPMENT - PHASE 1**

ELECTRICAL DETAILS

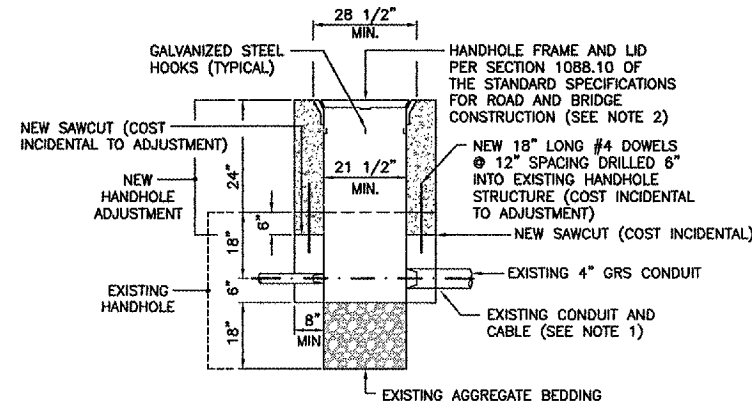
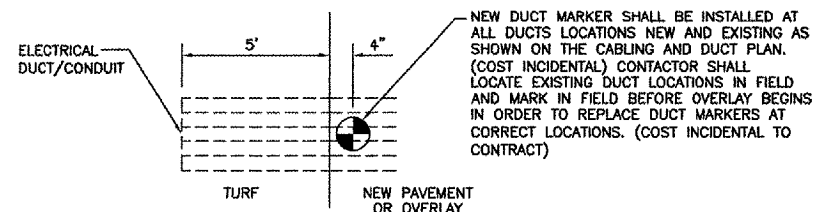
© Copyright CMT, Inc.
CMT
 CHAMFORD, MURPHY & TILLY, INC.
 CONSULTING ENGINEERS
 License No. 184-000673



DESIGN BY:	JRL
DRAWN BY:	JRO
CHECKED BY:	AB
APPROVED BY:	AB
DATE:	03/03/06
JOB No:	05257-02

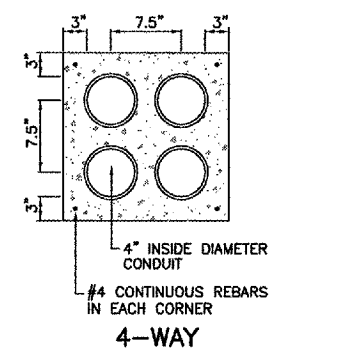


DUCT/CONDUIT MARKER DETAIL
 NOT TO SCALE



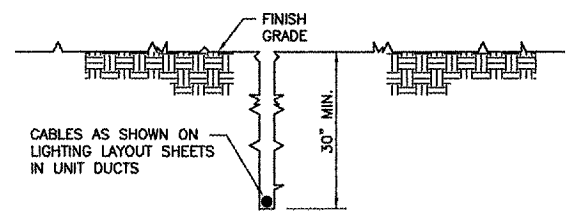
ADJUST HANDHOLE
 NOT TO SCALE

- NOTES:**
1. THE CONTRACTOR SHALL PROTECT EXISTING CABLE AND CONDUIT DURING THE HANDHOLE ADJUSTMENT CONSTRUCTION (INCIDENTAL TO ADJUSTMENT).
 2. THE CONTRACTOR SHALL REUSE THE EXISTING FRAME AND LID. IF THE CONTRACTOR DAMAGES THE EXISTING FRAME AND LID DURING CONSTRUCTION THE CONTRACTOR SHALL INSTALL A NEW FRAME AND LID AT NO ADDITIONAL COST.



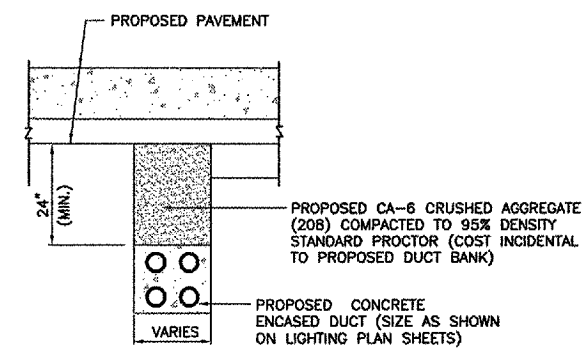
CONCRETE ENCASED DUCT BANK
 NOT TO SCALE

- NOTES:**
1. DIMENSIONS ARE MINIMUM.
 2. CONCRETE SHALL CONFORM TO ITEM 610.
 3. ALL CONDUIT SHALL BE SCHEDULE 40 PVC.
 4. TOP OF CONCRETE ENCASEMENT IN TURF AREAS SHALL NOT BE LESS THAN 24\"/>

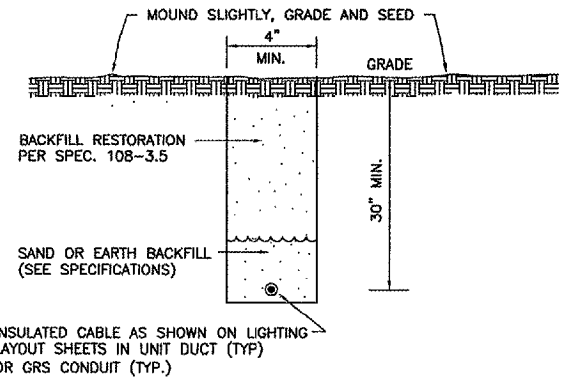


CABLE IN UNIT-DUCT-PLOWED
 NO SCALE

- NOTE**
1. TO FURTHER REDUCE THE POSSIBILITY OF WATER/MOISTURE ENTERING INTO THE CONNECTOR BETWEEN THE CABLE AND THE FIELD ATTACHED CONNECTOR, IT IS REQUIRED THAT A HEAT SHRINKABLE TUBING WITH INTERNAL ADHESIVE BE APPLIED OVER THE ENTIRE CABLE CONNECTOR.
 2. DUCT MARKERS SHALL BE INSTALLED AT EVERY NEW DUCT AND AT EVERY EXISTING DUCT USED FOR THIS PROJECT.
 3. CONTRACTOR SHALL HAVE THE OPTION TO TRENCH OR PLOW UNIT DUCT. NO ADDITIONAL PAYMENT SHALL BE MADE FOR TRENCHING.



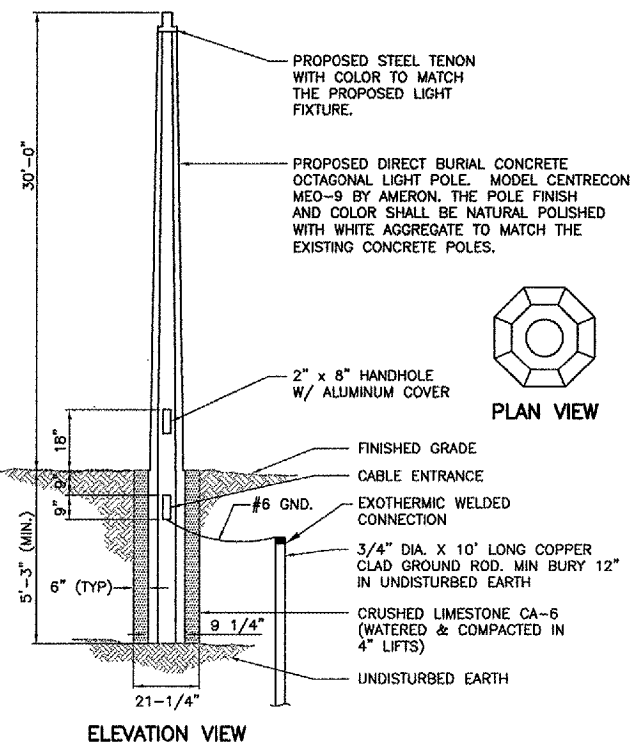
CONCRETE ENCASED DUCT BACKFILL
 NOT TO SCALE



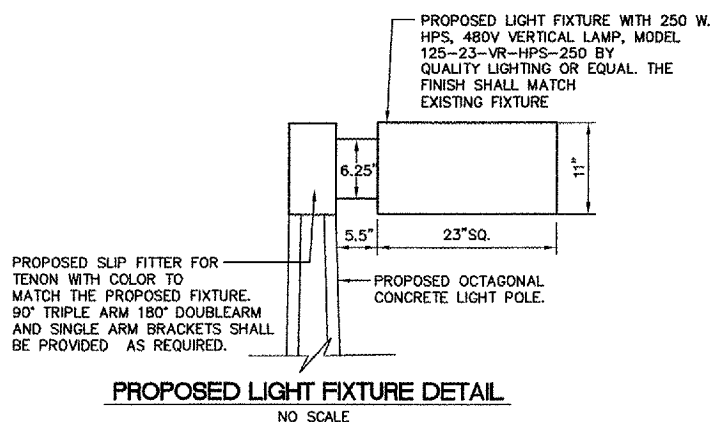
TRENCH DETAIL
 NO SCALE

- NOTE**
1. TRENCHES WITH MORE THAN 2 CABLES SHALL BE INCREASED 3\"/>

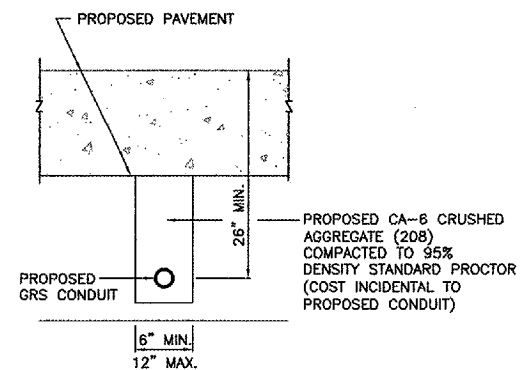
NOTE: AT CONTRACTOR'S OPTION, CABLE PLOWING MAY BE USED IN LIEU OF TRENCHING.



PROPOSED DIRECT BURIED CONCRETE TYPE A LIGHT POLE DETAIL
 NOT TO SCALE



PROPOSED LIGHT FIXTURE DETAIL
 NO SCALE



GRS CONDUIT UNDER PAVEMENT DETAIL
 NOT TO SCALE

- NOTES**
1. PROPOSED CONDUIT SHALL BE INSTALLED AT AN ELEVATION THAT WILL NOT CONFLICT WITH EXISTING OR PROPOSED UTILITIES INCLUDING STORM SEWER, UNDERDRAIN, CONDUIT, DUCT, GAS, WATERMAIN, PHONE, ELECTRICAL AT NO ADDITIONAL COST TO THE CONTRACT.