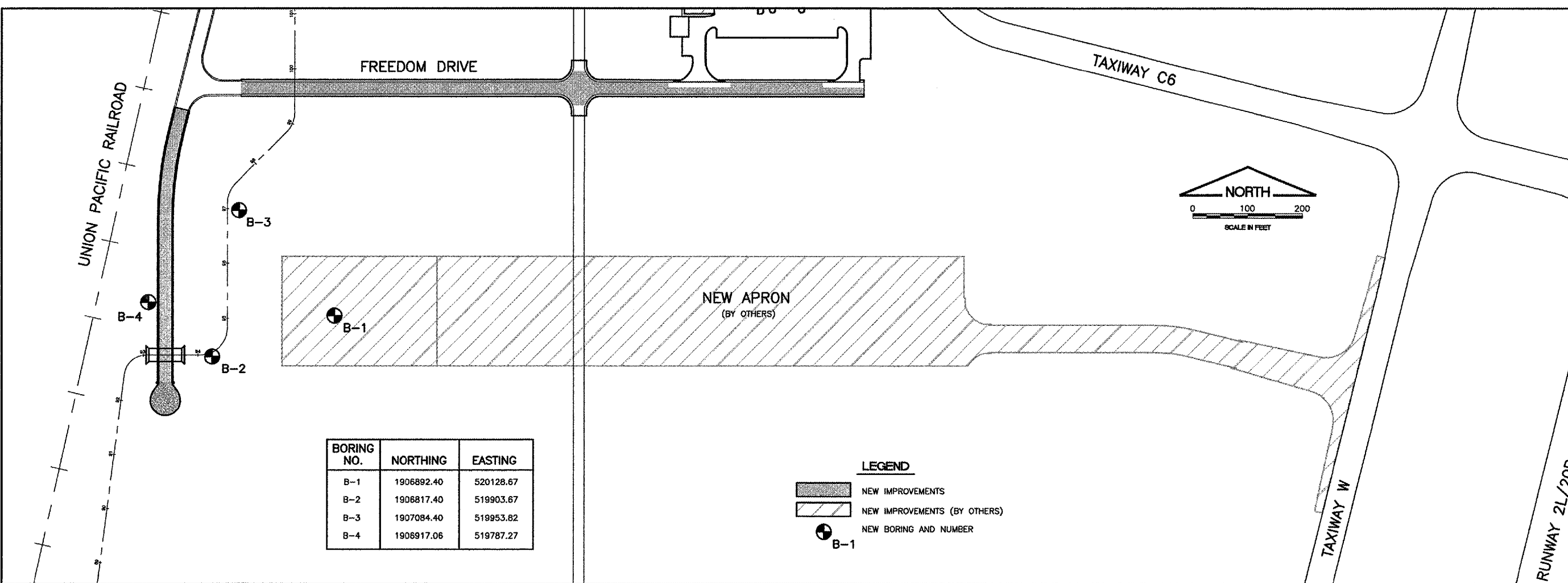


PATH: K:\0525702\Draw\sheets  
 FILE: ph1-enginfo1.dwg  
 UPDATE BY: johse  
 SURVEY BOOK #  
 XREF DWG:  
 XREF DWG:  
 DATE: Mon 10/11/04 3:14pm

REVISIONS		
NUMBER	BY	DATE

0 1 2  
 THIS BAR IS EQUAL TO 2"  
 AT FULL SCALE (34X22).



BORING NO.	NORTHING	EASTING
B-1	1906892.40	520128.67
B-2	1906817.40	519903.67
B-3	1907084.40	519953.62
B-4	1906917.06	519787.27

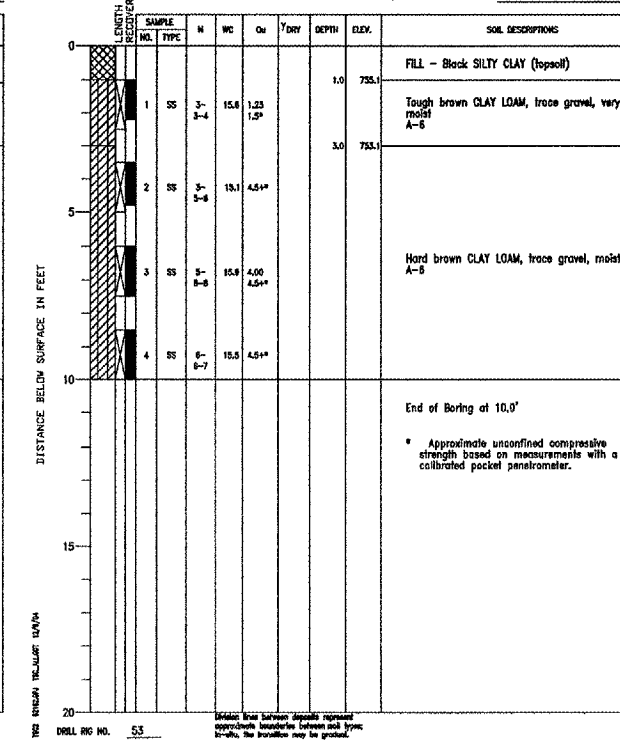
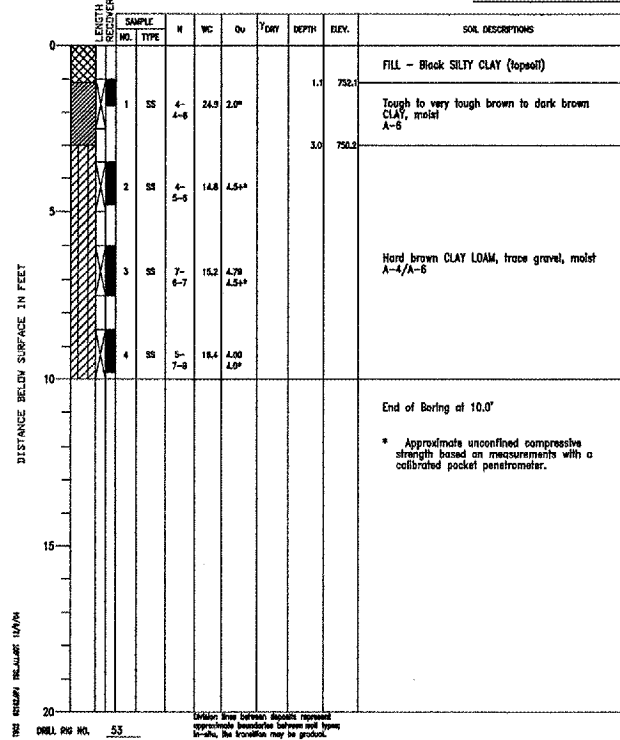
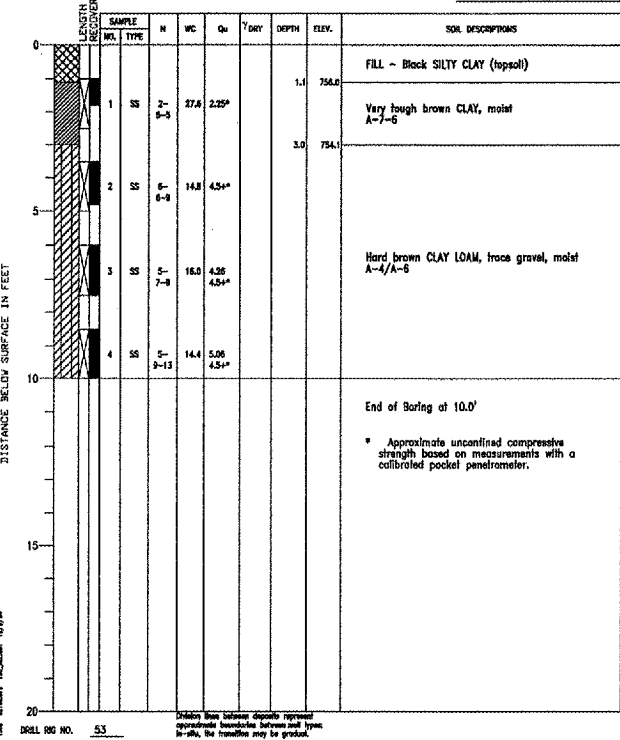
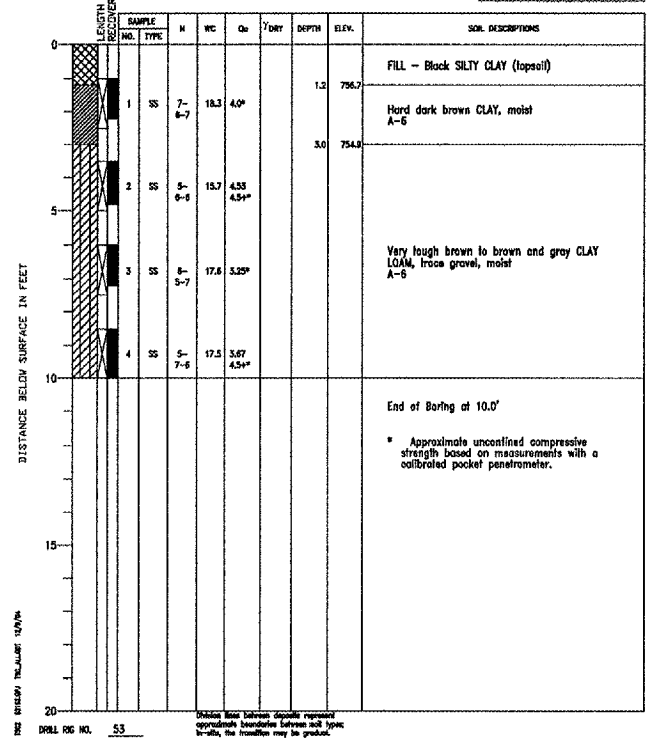
**LEGEND**  
 NEW IMPROVEMENTS  
 NEW IMPROVEMENTS (BY OTHERS)  
 NEW BORING AND NUMBER  
 B-1

PROJECT DuPage Airport - Apron Phase 4, South Flight Center, West Chicago, Illinois  
 CLIENT Crawford, Murphy & Tilly, Inc., Aurora, Illinois  
 BORING B-1 DATE STARTED 11-23-04 DATE COMPLETED 11-23-04 JOB L-62,162  
 ELEVATIONS: GROUND SURFACE 757.9, END OF BORING 747.9  
 WHILE DRILLING: Dry  
 WATER LEVEL OBSERVATIONS: Dry  
 AT END OF BORING: Dry  
 24 HOURS

PROJECT DuPage Airport - Apron Phase 4, South Flight Center, West Chicago, Illinois  
 CLIENT Crawford, Murphy & Tilly, Inc., Aurora, Illinois  
 BORING B-2 DATE STARTED 11-23-04 DATE COMPLETED 11-23-04 JOB L-62,162  
 ELEVATIONS: GROUND SURFACE 757.1, END OF BORING 747.1  
 WHILE DRILLING: Dry  
 WATER LEVEL OBSERVATIONS: Dry  
 AT END OF BORING: Dry  
 24 HOURS

PROJECT DuPage Airport - Apron Phase 4, South Flight Center, West Chicago, Illinois  
 CLIENT Crawford, Murphy & Tilly, Inc., Aurora, Illinois  
 BORING B-3 DATE STARTED 11-23-04 DATE COMPLETED 11-23-04 JOB L-62,162  
 ELEVATIONS: GROUND SURFACE 753.2, END OF BORING 743.2  
 WHILE DRILLING: Dry  
 WATER LEVEL OBSERVATIONS: Dry  
 AT END OF BORING: Dry  
 24 HOURS

PROJECT DuPage Airport - Apron Phase 4, South Flight Center, West Chicago, Illinois  
 CLIENT Crawford, Murphy & Tilly, Inc., Aurora, Illinois  
 BORING B-4 DATE STARTED 11-23-04 DATE COMPLETED 11-23-04 JOB L-62,162  
 ELEVATIONS: GROUND SURFACE 756.1, END OF BORING 746.1  
 WHILE DRILLING: Dry  
 WATER LEVEL OBSERVATIONS: Dry  
 AT END OF BORING: Dry  
 24 HOURS



**DUPAGE AIRPORT  
 WEST CHICAGO, ILLINOIS  
 ROADWAY IMPROVEMENTS FOR SOUTH FLIGHT CENTER  
 DEVELOPMENT - PHASE 1**

**ENGINEERING INFORMATION**

© Copyright CMT, Inc.  
**CMT**  
 CRAWFORD, MURPHY & TILLY, INC.  
 CONSULTING ENGINEERS  
 License No. 184-000613

**DMT**  
 DuPage Airport

DESIGN BY: JRL  
 DRAWN BY: JRO  
 CHECKED BY: JRL  
 APPROVED BY: DLP  
 DATE: 1/27/06  
 JOB No: 05257-02