

**SCOPE OF WORK**

THIS PROJECT WILL CONSIST OF WIDENING RUNWAY 13/31 FROM 60' TO 75' IN WIDTH. ASSOCIATED WORK INCLUDES EARTHWORK, MARKING AND RELOCATION OF MEDIUM INTENSITY RUNWAY LIGHTING SYSTEM.

**AIRPORT SECURITY NOTE**

AIRPORT SECURITY WILL BE MAINTAINED AT ALL TIMES. THE CONTRACTOR WILL CLOSE AND LOCK THE EXISTING GATE IN THE HAUL ROUTE AT THE END OF EACH WORKING DAY.

**UTILITY NOTE**

THE CONTRACTOR SHALL CONTACT ALL UTILITY COMPANIES AND AGENCIES WHICH HAVE LINES OR CONDUITS IN THE PROPOSED WORK AREA. ALL LINES AND CONDUITS SHALL BE LOCATED AND IDENTIFIED FOR DEPTH BEFORE ANY EXCAVATION BEGINS. THE CONTRACTOR WILL CALL J.U.L.I.E. (1-800-892-0123) TO ACCOMPLISH THE ABOVE. IT IS THE CONTRACTOR'S RESPONSIBILITY TO IDENTIFY ALL UNDERGROUND NON-JULIE UTILITIES LOCATED WITHIN THE PROPOSED CONSTRUCTION LIMITS. THESE UNDERGROUND IMPROVEMENTS WILL BE LOCATED AT THE CONTRACTOR'S OWN EXPENSE PRIOR TO THE START OF CONSTRUCTION ACTIVITIES.

**HEIGHT OF CONSTRUCTION EQUIPMENT**

THE MAXIMUM ANTICIPATED HEIGHT OF THE CONSTRUCTION EQUIPMENT WILL BE 25 FEET. THE TALLEST EQUIPMENT IS EXPECTED TO BE A SEMI-TRUCK WITH THE TRAILER IN THE UP POSITION.

**HAUL ROUTE AND VEHICLE PARKING**

THE CONTRACTOR WILL USE THE DESIGNATED HAUL ROUTE AND PARKING AREA AS SHOWN ON THIS SHEET. THE PROPOSED PARKING AREA WILL BE 200' X 200'. THE CONTRACTOR WILL BE REQUIRED TO MAINTAIN THE PROPOSED HAUL ROUTE AND PARKING AREA THROUGHOUT THE COURSE OF THE PROJECT. ANY AREAS DAMAGED OUTSIDE OF THESE AREAS WILL BE REPAIRED BY THE CONTRACTOR AND AT THE CONTRACTOR'S OWN EXPENSE. AT THE CONCLUSION OF THE PROJECT THE CONTRACTOR WILL GRADE, FERTILIZE, SEED AND MULCH THE HAUL ROUTE AND PARKING AREA AS NEEDED TO RESTORE IT TO ITS ORIGINAL STATE. RESTORATION OF THE HAUL ROUTE AND PARKING AREA WILL BE CONSIDERED INCIDENTAL TO THE PROJECT AND NO ADDITIONAL COMPENSATION WILL BE ALLOWED.

**CONTRACTOR RESPONSIBILITIES**

THE CONTRACTOR'S EQUIPMENT PARKING AND STORAGE AREA WILL BE AS SHOWN ON THIS SHEET. THE CONTRACTOR'S EMPLOYEES WILL PARK THEIR VEHICLES IN THIS AREA. ONLY CONTRACTOR VEHICLES WILL BE ALLOWED OUTSIDE THIS AREA.

THE CONTRACTOR AND HIS EMPLOYEES WILL BE RESTRICTED TO THE WORK AREA AND ALL OTHER AREAS OF THE AIRPORT ARE "OFF LIMITS" TO THEM.

NO TRENCHES OR HOLES WILL REMAIN OPEN OVERNIGHT.

**BARRICADES AND TRAFFIC CONES**

IT WILL BE THE CONTRACTOR'S RESPONSIBILITY TO PLACE AND MAINTAIN BARRICADES AND TRAFFIC CONES AS DIRECTED BY THE AIRPORT MANAGER. THE BARRICADES WILL BE EQUIPPED WITH RED FLASHING OR STEADY BURN LIGHTS AND 20" SQUARE ORANGE FLAGS. THE BARRICADES, THEIR MAINTENANCE, PLACEMENT AND REMOVAL WILL BE CONSIDERED AS AN INCIDENTAL ITEM TO THE CONTRACT AND NO ADDITIONAL COMPENSATION WILL BE ALLOWED.

**150-ENGINEER'S FIELD OFFICE NOTES**

THE PROPOSED ENGINEER'S FIELD OFFICE WILL BE FURNISHED, MAINTAINED, AND REMOVED IN ACCORDANCE WITH ITEM AR150510 "ENGINEER'S FIELD OFFICE" AS STATED ON PAGE 168 OF THE SUPPLEMENTAL SPECIFICATIONS AND RECURRING SPECIAL PROVISIONS, ADOPTED JULY 1, 2004.

THE LOCATION OF THE PROPOSED ENGINEER'S FIELD OFFICE WILL BE DETERMINED AT THE PRE-CONSTRUCTION MEETING.

THE ENGINEERING FIRM WILL MAKE PAYMENT FOR ALL LONG DISTANCE TELEPHONE CALLS IN EXCESS OF ONE HUNDRED DOLLARS (\$100.00) PER MONTH.

THE PROPOSED ENGINEER'S FIELD OFFICE WILL BE PAID FOR UNDER ITEMS: AR150510 ENGINEER'S FIELD OFFICE \_\_\_\_ 1 LS.

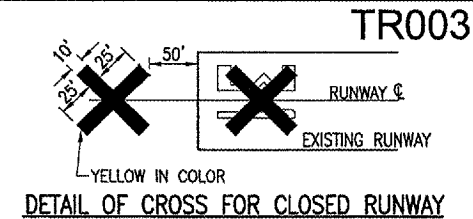
**EROSION CONTROL**

THIS PROJECT WILL DISTURB MORE THAN 1 ACRE OF LAND, THEREFORE A N.P.D.E.S. PERMIT WILL BE REQUIRED.

THE LOCATION, SIZE AND TYPE OF MATERIAL OF EXISTING UNDERGROUND UTILITIES INDICATED ON THE PLANS IS NOT REPRESENTED AS BEING ACCURATE, SUFFICIENT OR COMPLETE. IT SHALL BE THE CONTRACTOR'S RESPONSIBILITY TO DETERMINE THE ACTUAL LOCATION OF ALL SUCH FACILITIES, INCLUDING SERVICE CONNECTIONS TO UNDERGROUND UTILITIES. PRIOR TO CONSTRUCTION, THE CONTRACTOR SHALL NOTIFY THE UTILITY COMPANIES OF HIS OPERATIONAL PLANS AND SHALL OBTAIN FROM THE RESPECTIVE UTILITY COMPANIES DETAILED INFORMATION AND ASSISTANCE RELATIVE TO THE LOCATION OF THEIR FACILITIES AND THE WORKING SCHEDULE OF THE COMPANIES FOR REMOVAL OR ADJUSTMENT WHERE REQUIRED. IN THE EVENT AN UNEXPECTED UTILITY INTERFERENCE IS ENCOUNTERED DURING CONSTRUCTION, THE CONTRACTOR SHALL IMMEDIATELY NOTIFY THE UTILITY COMPANY OF JURISDICTION. THE ENGINEER SHALL ALSO BE IMMEDIATELY NOTIFIED. ANY SUCH MAINS AND SERVICES SHALL BE RESTORED TO SERVICE AT ONCE AND PAID FOR BY THE CONTRACTOR AT NO ADDITIONAL COST TO THE CONTRACT.

CALL J.U.L.I.E. FOR UTILITY INFORMATION AT 1-800-892-0123.

BENCHMARK DATA		
NO.	DESCRIPTION	ELEV.
1	CHISLED SQUARE ON CONC. BASE, GUIDANCE SIGN, STA 190+40, 124.5' LT.	610.85
2	CHISLED SQUARE ON CONC. BASE, GUIDANCE SIGN, STA 215+75, 111.4' LT.	612.94
3	MAG. NAIL ON CONC. BASE, RWY. LIGHT, STA. 226+01.90, 47.5' RT.	611.98



**NOTE:**

COST OF CONSTRUCTING, PLACING, MAINTAINING AND REMOVING CROSSES WILL BE CONSIDERED INCIDENTAL TO THE CONTRACT AND NO ADDITIONAL COMPENSATION WILL BE ALLOWED. THE CROSSES WILL BE YELLOW IN COLOR AND SHALL BE MADE OF A SUITABLE MATERIAL AS APPROVED BY THE AIRPORT MANAGER. THE CROSSES WILL BE PLACED OVER THE NUMERALS AND SECURED IN A MANNER APPROVED BY THE MANAGER. THE PROPOSED CROSSES WILL BE PLACED EACH DAY THE RUNWAY IS CLOSED AND REMOVED WHEN THE RUNWAY IS RE-OPENED. THE CONTRACTOR WILL BE RESPONSIBLE FOR THE PLACEMENT AND REMOVAL OF THE CROSSES. NO ADDITIONAL COMPENSATION WILL BE ALLOWED.

**J.U.L.I.E. INFORMATION**

COUNTY CARROLL  
 CITY SAVANNA  
 TOWNSHIP SAVANNA  
 SECTION NO. 25  
 ADDRESS TRI-TOWNSHIP AIRPORT  
 8049 IL ROUTE 84S  
 SAVANNA, ILLINOIS 61074

**PROPOSED SAFETY PLAN**

GENERAL - THE TRI-TOWNSHIP AIRPORT IS COMPRISED OF ONE RUNWAY. THE PROPOSED CONSTRUCTION WILL NECESSITATE CLOSING THE RUNWAY AND IT WILL REMAIN CLOSED UNTIL THE PROJECT IS COMPLETED. THE CONTRACTOR WILL NOTIFY THE AIRPORT MANAGER TWO WEEKS BEFORE HE STARTS THIS PROJECT. THIS WILL GIVE THE AIRPORT MANAGER SUFFICIENT TIME TO NOTIFY THE AIRPORT USERS AND ISSUE NOTAMS. ALL WORK INCLUDED IN OPENING AND CLOSING THE RUNWAY WILL BE CONSIDERED INCIDENTAL TO THE PROJECT AND NO ADDITIONAL COMPENSATION WILL BE ALLOWED.

**RUNWAY CLOSURE PROCEDURES -**

- \* CONTACT THE AIRPORT MANAGER OR HIS ASSIGNED REPRESENTATIVE.
- \* ISSUANCE OF NOTAM BY THE AIRPORT MANAGER OR HIS ASSIGNED REPRESENTATIVE.
- \* PLACEMENT OF CROSSES (SEE DETAIL THIS SHEET).
- \* PLACEMENT OF LIGHTED BARRICADES. ONLY AT THE TIME THAT ALL OF THE ABOVE ARE COMPLETED MAY ANY CONSTRUCTION OPERATIONS WITHIN 200 FT. OF THE EFFECTED RUNWAY CENTERLINE BEGIN.

**RUNWAY REOPENING PROCEDURES -**

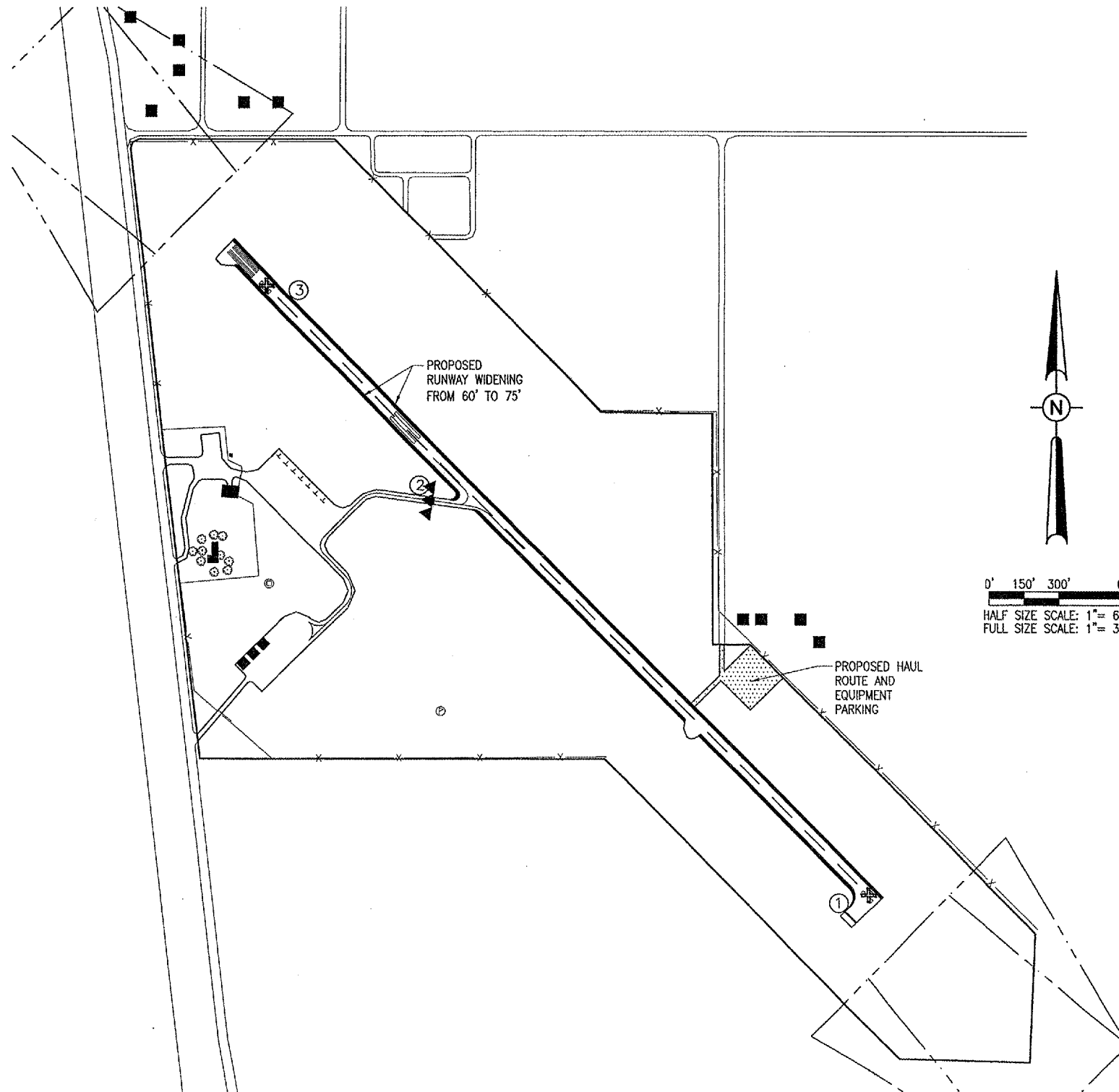
- \* REMOVE CROSSES.
- \* REMOVE LIGHTED BARRICADES.
- \* NOTIFY THE AIRPORT MANAGER OR HIS REPRESENTATIVE TO CANCEL THE NOTAM.
- \* CANCELLATION OF THE NOTAM. A CLOSED RUNWAY WILL NOT BE REOPENED UNTIL ALL EQUIPMENT AND WORK ARE FURTHER THAT 200 FT. FROM THE EFFECTED RUNWAY CENTERLINE.

IDENTIFICATION - WHEN THE CONTRACTORS VEHICLES AND EQUIPMENT ARE ON THE AIRPORT THEY SHALL BE PROPERLY MARKED WITH THREE (3') FOOT SQUARE CHECKERED FLAGS (INTERNATIONAL ORANGE AND WHITE). THE CONTRACTOR WILL ALSO PROVIDE WORKERS WITH SOME TYPE OF TAG OR GARMENT TO IDENTIFY THE PERSON AS BEING PART OF THE CONSTRUCTION CREW.

RADIO CONTROL - THE CONTRACTOR WILL BE REQUIRED TO BE IN TWO-WAY RADIO CONTACT (122.70 MHz.) WITH THE AIRPORT UNICOM. THIS WILL KEEP THE CONTRACTOR IN CONSTANT CONTACT WITH THE TRI-TOWNSHIP AIRPORT AND ENABLE THE AIRPORT TO IMMEDIATELY CONTACT THE CONTRACTOR IN CASE OF AN AERONAUTIC EMERGENCY THAT WOULD REQUIRE ACTION BY THE CONTRACTOR AND/OR HIS PERSONNEL.

**LEGEND**

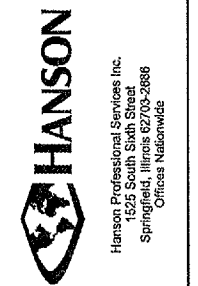
- EXISTING IMPROVEMENTS
- PROPOSED IMPROVEMENTS
- EXISTING BUILDINGS
- PROPOSED HAUL ROUTE AND EQUIPMENT PARKING AREA
- PROPOSED BENCHMARK
- PROPOSED BARRICADES OR TRAFFIC CONES



DATE	REVISION

TRI-TOWNSHIP AIRPORT  
 SAVANNA, CARROLL COUNTY  
 ILLINOIS  
 A.I.P. PROJ.: 3-17-0091-812  
 I.L. PROJ.: SFY-3538

FILE PROJECT No. 826-06RWYD_0800	DATE 10/24/05
REVISIONS R-003SET.DWG	B.A.K. 10/24/05
SCALE 1" = 300'	B.A.K. 10/24/05
DATE 10/24/05	C.A.H. 01/12/06
LAYOUT	
DRAWN	
REVIEWED	



PROPOSED WIDENING OF RUNWAY 13/31  
 PROPOSED SAFETY PLAN

MAR 29, 2006 10:48 AM CAH I:\AIRPORTS\SAVANNA\826-06RWYD\AIRPORT\SHEETS\IR-003SET.DWG - SAFETY