

STATE OF ILLINOIS
DEPARTMENT OF TRANSPORTATION

F.A.U. RTE. 2886	SECTION 2016-034RS	COUNTY COOK	TOTAL SHEETS 26	SHEET NO. 1
ILLINOIS CONTRACT NO.: 62C46				

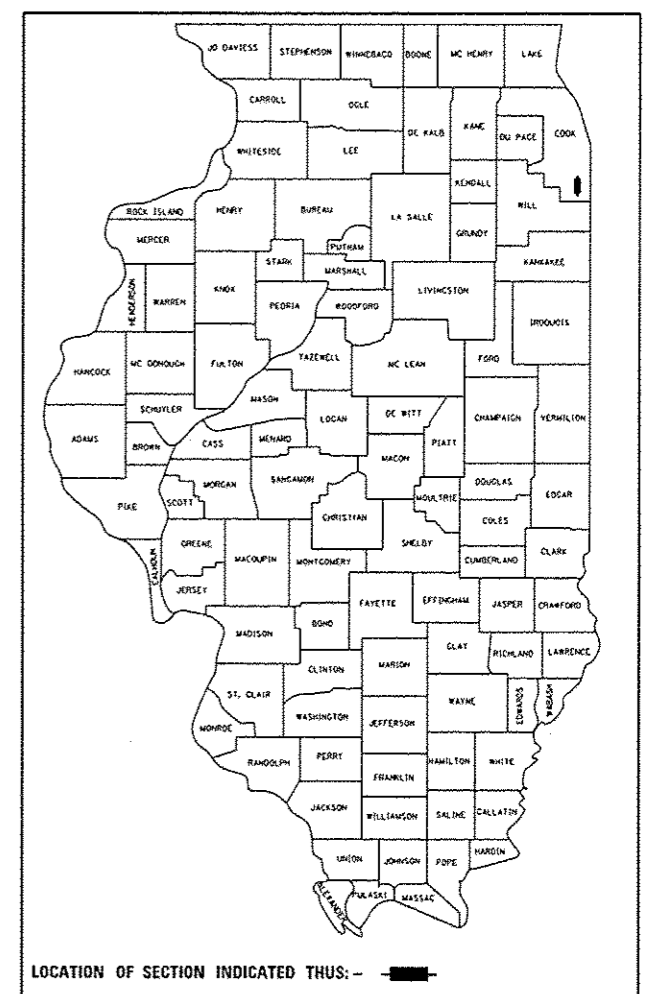
*26+8 = 34 total pages

D-91-353-16

FOR INDEX OF SHEETS, SEE SHEET NO. 2

PROPOSED HIGHWAY PLANS
F.A.U. 2886 /OR 60 (HALSTED ST.)
IL 1 CUTOFF TO 15TH ST.
RESURFACING (3P) AND
ADA PEDESTRIAN RAMPS
SECTION NO.: 2016-034RS
PROJECT: STP-000V(106)
COOK COUNTY
C-91-353-16

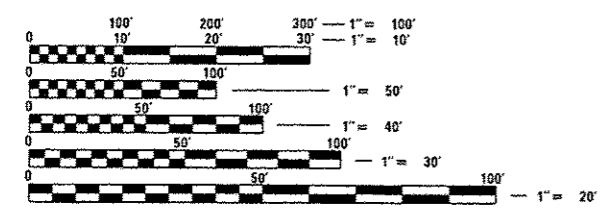
PROJECT LOCATED IN THE CITY OF CHICAGO HEIGHTS



TRAFFIC DATA:
 2014 ADT - 1150 TO 9150
 SPEED LIMIT - 30 MPH

OMISSIONS:
 BRIDGE OMISSION
 STA. 38+85 TO STA. 39+82

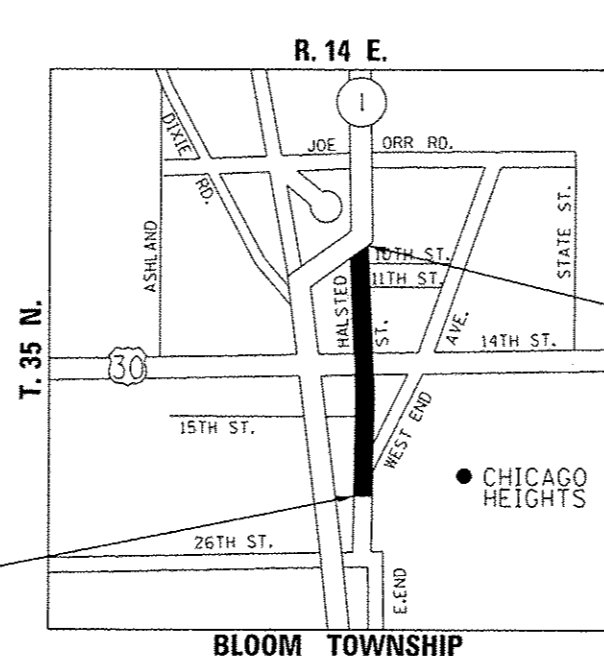
PROJECT ENDS
 STA. 43+60.5



FULL SIZE PLANS HAVE BEEN PREPARED USING STANDARD ENGINEERING SCALES. REDUCED SIZED PLANS WILL NOT CONFORM TO STANDARD SCALES. IN MAKING MEASUREMENTS ON REDUCED PLANS, THE ABOVE SCALES MAY BE USED.

J.U.L.I.E.
 JOINT UTILITY LOCATION INFORMATION FOR EXCAVATION
 1-800-892-0123
 OR 811

PROJECT BEGINS
 STA. 2+95



PROJECT ENGINEER: JENPAI CHANG (847) 705-4432
 PROJECT MANAGER: FAWAD AQUEEL (847) 705-4247
 CONTRACT NO. 62C46

GROSS LENGTH OF IMPROVEMENT - 4065.5 FEET - .77 MILES
 NET LENGTH OF IMPROVEMENT - 3968.5 FEET - .75 MILES

STATE OF ILLINOIS
 DEPARTMENT OF TRANSPORTATION

SUBMITTED February 6, 2017
 Region Engineer
 March 24, 2017
 Maureen M. Adonis, P.E.
 Engineer of Design and Environment
 March 24, 2017
 Director of Program Development

PRINTED BY THE AUTHORITY OF THE STATE OF ILLINOIS

INDEX OF SHEETS

SHEET NO.	DESCRIPTION:
1	COVER SHEET
2	INDEX OF SHEETS, STATE STANDARDS AND GENERAL NOTES
3-4	SUMMARY OF QUANTITIES
5-9	TYPICAL SECTIONS
10-11	ROADWAY AND PAVEMENT MARKING PLANS
11A-11H	ADA SIDEWALK RAMP DETAILS
12	DETAILS FOR FRAMES AND LIDS ADJUSTMENTS WITH MILLING (BD-8)
13	DETAILS FOR PAVEMENT PATCHING FOR HMA SURFACED PAVEMENT (BD-22)
14	DETAILS FOR CURB AND GUTTER REMOVAL AND REPLACEMENT (BD-24)
15	BUTT JOINT AND HMA TAPER DETAILS (BD-32)
16	TRAFFIC CONTROL AND PROTECTION FOR SIDE ROADS, INTERSECTIONS, AND DRIVEWAYS (TC-10)
17	TYPICAL APPLICATION FOR RAISED REFLECTIVE PAVEMENT MARKERS (TC-11)
18	DISTRICT ONE TYPICAL PAVEMENT MARKINGS (TC-13)
19	TRAFFIC CONTROL AND PROTECTION AT TURN BAYS (TO REMAIN OPEN TO TRAFFIC) (TC-14)
20	PAVEMENT MARKING--LETTERS AND SYMBOLS FOR TRAFFIC STAGING (TC-16)
21	DISTRICT ONE - DETECTOR LOOP INSTALLATION DETAILS FOR ROADWAY RESURFACING (TS-07)
22-25	DETECTOR LOOP LOCATION DETAILS
26	ARTERIAL ROAD INFORMATION SIGNING (TC-22)

STATE STANDARDS

000001-06	STANDARD SYMBOLS, ABBREVIATIONS AND PATTERNS
424001-09	PERPENDICULAR CURB AND RAMPS FOR SIDEWALKS
424006-02	DIAGONAL CURB RAMPS FOR SIDEWALKS
424021-03	DEPRESSED CORNER FOR SIDEWALKS
442001-04	CLASS C AND D PATCHES
604001-04	FRAMES AND LIDS, TYPE 1
604006-05	FRAMES AND GRATES, TYPE 23
606001-06	CONCRETE CURB TYPE B AND COMBINATION CONCRETE CURB AND GUTTER
701601-09	URBAN LANE CLOSURE, MULTILANE, 1W OR 2W WITH NON-TRAVERSABLE MEDIAN
701606-10	URBAN LANE CLOSURE, MULTILANE, 2W WITH MOUNTABLE MEDIAN
701701-10	URBAN LANE CLOSURE, MULTILANE INTERSECTION
701801-06	SIDEWALK CORNER OR CROSSWALK CLOSURE
701901-06	TRAFFIC CONTROL DEVICES
780001-05	TYPICAL PAVEMENT MARKING
781001-04	TYPICAL APPLICATION RAISED REFLECTIVE PAVEMENT MARKERS

GENERAL NOTES:

BEFORE STARTING ANY EXCAVATION THE CONTRACTOR SHALL CALL "JULIE" AT 800-892-0123 OR "CUAN" (CHICAGO UTILITY ALERT NETWORK) AT 312-744-7000 FOR FIELD LOCATIONS OF BURIED ELECTRIC, TELEPHONE AND GAS FACILITIES. (48 HOURS NOTIFICATION IS REQUIRED).

10 FEET (3 METERS) TRANSITION SHALL BE USED TO MATCH PROPOSED CURB AND GUTTER AND MEDIAN ITEMS OF WORK TO EXISTING CURBS AND GUTTERS AND MEDIANS IN THE FIELD, UNLESS OTHERWISE SHOWN. THE TRANSITION SHALL BE PAID FOR AT THE CONTRACT UNIT PRICE FOR THE PROPOSED ITEMS OF WORK SPECIFIED.

THE CONTRACTOR SHALL COORDINATE CONSTRUCTION ACTIVITIES WITH THE UTILITY COMPANIES AND THE CITY OF CHICAGO HEIGHTS.

THE CONTRACTOR WILL NOT BE ALLOWED TO SET UP A YARD OR FIELD OFFICE ON STATE PROPERTY WITHOUT WRITTEN PERMISSION FROM THE DEPARTMENT.

ANY PAVEMENT MARKINGS AND RAISED REFLECTIVE PAVEMENT MARKERS OBLITERATED BY MILLING AND RESURFACING OPERATIONS ON SIDE STREETS AND ENTRANCES SHALL BE REPLACED AND PAID FOR IN KIND.

ALL DAMAGE TO EXISTING PAVEMENT MARKINGS OR RAISED REFLECTIVE PAVEMENT MARKERS OUTSIDE THE REMOVAL LINE SHOWN ON THE PLANS SHALL BE REPLACED AT NO ADDITIONAL COST TO THE DEPARTMENT.

ALL PAVEMENT PATCHING LOCATIONS WILL BE DETERMINED IN THE FIELD BY THE ENGINEER.

LOCATION OF COMBINATION CONCRETE CURB AND GUTTER REMOVAL AND REPLACEMENT (OR COMBINATION CURB AND GUTTER (THE TYPE SPECIFIED ON THE PLANS)), WILL BE DETERMINED IN THE FIELD BY THE ENGINEER.

DRAINAGE ADJUSTMENT OR RECONSTRUCTION LOCATIONS WILL BE DETERMINED IN THE FIELD BY THE ENGINEER.

IT SHALL BE THE CONTRACTORS RESPONSIBILITY TO VERIFY ALL DIMENSIONS AND EXISTING CONDITIONS IN THE FIELD PRIOR TO CONSTRUCTION AND ORDERING OF MATERIALS.

FRAMES AND GRATES ADJUSTMENT OF PRIVATE UTILITIES WITHIN THE LIMITS OF THE IMPROVEMENT SHALL BE DONE BY THEIR RESPECTIVE OWNERS AND ARE NOT IN PART OF THIS CONTRACT.

BEFORE BEGINNING ANY WORK, THE CONTRACTOR SHALL RETAIN AND RECORD FOR FUTURE REFERENCE, ALL EXISTING PAVEMENT MARKING LINES (RAISED REFLECTIVE PAVEMENT MARKERS) IN ORDER THAT THESE LOCATIONS CAN BE RE-ESTABLISHED FOR STRIPING. EXACT LOCATIONS OF ALL PAVEMENT MARKINGS SHALL BE AS DIRECTED BY THE ENGINEER.

WHEN THE MILLED PAVEMENT IS OPEN TO TRAFFIC THE MAXIMUM GRADE DIFFERENTIAL BETWEEN PASSES OF THE MILLING MACHINE SHALL NOT EXCEED 1/2 INCHES (40 mm) WHERE THE SPEED LIMIT IS 40 MPH (80 km/ h) OR LESS AND 1 INCH (25 mm) WHERE THE SPEED LIMIT IS GREATER THAN 40 MPH (80 km/ h), WITH WRITTEN APPROVAL OF THE ENGINEER, A MAXIMUM GRADE DIFFERENTIAL OF 3 INCHES (75 mm) MAY BE ALLOWED IF THE EDGE OF THE MILLING MACHINE IS SLOPED A MINIMUM (1:3).

THE CONTRACTOR SHALL CONTACT THE DISTRICT ONE TRAFFIC CONTROL CENTER AT (847) 705-4470 A MINIMUM OF 72 HOURS IN ADVANCE OF BEGINNING WORK.

PERMANENT PAVEMENT MARKINGS SHALL BE THERMOPLASTIC (OF THE EXTRUDED TYPE) AND SHOULD BE PLACED IN ACCORDANCE WITH THE "DISTRICT ONE TYPICAL PAVEMENT MARKINGS" DETAIL. (TC-13)

THE RESIDENT ENGINEER SHALL CONTACT PATRICE HARRIS, AREA TRAFFIC ENGINEER, AT PATRICE.HARRIS@ILLINOIS.GOV, A MINIMUM OF TWO (2) WEEKS PRIOR TO THE PLACEMENT OF PERMANENT PAVEMENT MARKINGS.

THE CONTRACTOR SHALL MAINTAIN PEDESTRIAN ACCESS AT ALL TIMES DURING CONSTRUCTION.

FILE NAME :	USER NAME : STEEDPA	DESIGNED -	REVISED -	STATE OF ILLINOIS DEPARTMENT OF TRANSPORTATION	INDEX OF SHEETS, STATE STANDARDS AND GENERAL NOTES FAU 2886 /OR 60 (HALSTED ST.)—IL 1 CUTOFF TO 15TH ST.	F.A.U. RTE.	SECTION	COUNTY	TOTAL SHEETS	SHEET NO.	
g:\11084EBIDINTEG\Illinois.gov\PIWIDOT\Documents\1001 Offices\District 1\Projects\DI35\BRAND\Design\DI35316-shr-plandgn	PLLOT SCALE = 1/8" = 1' / in.	CHECKED -	REVISED -			2886	2016-034RS	COOK	26	2	
Default	PLLOT DATE = 4/14/2017	DATE -	REVISED -			CONTRACT NO. 62C46					
						ILLINOIS FED. AID PROJECT					

Rev 4-18-17

URBAN

URBAN

SUMMARY OF QUANTITIES			TOTAL QUANTITIES		CONSTRUCTION TYPE CODE				
CODE NO	ITEM	UNIT	TOTAL QUANTITIES	80/20 FED/STATE 0005					
21101615	TOPSOIL FURNISH AND PLACE, 4"	SO YD	129	129					
25200110	SODDING, SALT TOLERANT	SO YD	129	129					
40600290	BITUMINOUS MATERIALS (TACK COAT)	POUND	13745	13745					
40600400	MIXTURE FOR CRACKS, JOINTS, AND FLANGEWAYS	TON	31	31					
40600827	POLYMERIZED LEVELING BINDER (MACHINE METHOD), IL-4.75, N50	TON	789	789					
40600982	HOT-MIX ASPHALT SURFACE REMOVAL - BUTT JOINT	SO YD	441	441					
40603340	HOT-MIX ASPHALT SURFACE COURSE, MIX "D", N70	TON	1711	1711					
42001300	PROTECTIVE COAT	SO YD	684	684					
42400200	PORTLAND CEMENT CONCRETE SIDEWALK 5 INCH	SO FT	3768	3768					
42400800	DETECTABLE WARNINGS	SQ FT	344	344					
44000155	HOT-MIX ASPHALT SURFACE REMOVAL, 1 1/2"	SO YD	1250	1250					
44000158	HOT-MIX ASPHALT SURFACE REMOVAL, 2 1/4"	SO YD	19112	19112					
44000600	SIDEWALK REMOVAL	SO FT	3713	3713					

SUMMARY OF QUANTITIES			TOTAL QUANTITIES		CONSTRUCTION TYPE CODE				
CODE NO	ITEM	UNIT	TOTAL QUANTITIES	80/20 FED/STATE 0005					
44003510	MEDIAN REMOVAL PARTIAL DEPTH	SO FT	5376	5376					
44201803	CLASS D PATCHES, TYPE II, 13 INCH	SO YD	334	334					
44201807	CLASS D PATCHES, TYPE III, 13 INCH	SO YD	476	476					
44201809	CLASS D PATCHES, TYPE IV, 13 INCH	SO YD	2604	2604					
48102100	AGGREGATE WEDGE SHOULDER, TYPE B	TON	42	42					
60300305	FRAMES AND LIDS TO BE ADJUSTED	EACH	27	27					
66900200	NON-SPECIAL WASTE DISPOSAL	CU YD	10	10					
66900450	SPECIAL WASTE PLANS AND REPORTS	LSUM	1	1					
66900530	SOIL DISPOSAL ANALYSIS	EACH	2	2					
67000400	ENGINEER'S FIELD OFFICE, TYPE A	CAL MO	3	3					
67100100	MOBILIZATION	LSUM	1	1					
70102625	TRAFFIC CONTROL AND PROTECTION, STANDARD 701606	LSUM	1	1					
70102630	TRAFFIC CONTROL AND PROTECTION, STANDARD 701601	LSUM	1	1					
70102635	TRAFFIC CONTROL AND PROTECTION, STANDARD 701701	LSUM	1	1					
70102640	TRAFFIC CONTROL AND PROTECTION, STANDARD 701801	LSUM	1	1					

* SPECIALTY ITEMS
 NON-PARTICIPATING ITEMS

FILE NAME :	USER NAME : STEEOPA	DESIGNED -	REVISED -
DR:\VLAB\EBID\HT\EG\1111\121\1\Pre\1035333\CAD\Draw\Design\035333\DR\1111.dgn		CHECKED -	REVISED -
PLOT SCALE * 100.0000" / 1"		DATE -	REVISED -
PLOT DATE * 2/11/2017			

STATE OF ILLINOIS
DEPARTMENT OF TRANSPORTATION

SUMMARY OF QUANTITIES
FAU 2886 /OR 60 (HALSTED ST.)—IL 1 CUTOFF TO 15TH ST.
SCALE: SHEET NO. OF SHEETS STA. TO STA.

F.A.U. RTE.	SECTION	COUNTY	TOTAL SHEETS	SHEET NO.
2886	2016-034RS	COOK	26	3
FED. ROAD DIST. NO. 1 ILLINOIS FED. AID PROJECT			CONTRACT NO. 62C46	

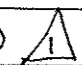
Rev 4-18-17

REV

URBAN

SUMMARY OF QUANTITIES				CONSTRUCTION TYPE CODE			
CODE NO	ITEM	UNIT	TOTAL QUANTITIES	80/20 FED/STATE 0005			
70300100	SHORT TERM PAVEMENT MARKING	FOOT	2390	2390			
70300150	SHORT TERM PAVEMENT MARKING REMOVAL	SO FT	398	398			
70300210	TEMPORARY PAVEMENT MARKING LETTERS AND SYMBOLS	SO FT	110	110			
70300220	TEMPORARY PAVEMENT MARKING - LINE 4"	FOOT	9455	9455			
70300240	TEMPORARY PAVEMENT MARKING - LINE 6"	FOOT	1460	1460			
70300250	TEMPORARY PAVEMENT MARKING - LINE 8"	FOOT	248	248			
70300260	TEMPORARY PAVEMENT MARKING - LINE 12"	FOOT	581	581			
70300280	TEMPORARY PAVEMENT MARKING - LINE 24"	FOOT	344	344			
70300520	PAVEMENT MARKING TAPE, TYPE III 4"	FOOT	1195	1195			
*78000100	THERMOPLASTIC PAVEMENT MARKING - LETTERS AND SYMBOLS	SO FT	110	110			
*78000200	THERMOPLASTIC PAVEMENT MARKING - LINE 4"	FOOT	9455	9455			
*78000400	THERMOPLASTIC PAVEMENT MARKING - LINE 6"	FOOT	1460	1460			
*78000500	THERMOPLASTIC PAVEMENT MARKING - LINE 8"	FOOT	248	248			

SUMMARY OF QUANTITIES				CONSTRUCTION TYPE CODE			
CODE NO	ITEM	UNIT	TOTAL QUANTITIES	80/20 FED/STATE 0005			
*78000600	THERMOPLASTIC PAVEMENT MARKING - LINE 12"	FOOT	581	581			
*78000650	THERMOPLASTIC PAVEMENT MARKING - LINE 24"	FOOT	344	344			
*78100100	RAISED REFLECTIVE PAVEMENT MARKER	EACH	506	506			
78300200	RAISED REFLECTIVE PAVEMENT MARKER REMOVAL	EACH	456	456			
*88600600	DETECTOR LOOP REPLACEMENT	FOOT	587	587			
X0320050	CONSTRUCTION LAYOUT (SPECIAL)	LSUM	1	1			
X2020110	GRADING AND SHAPING SHOULDERS	UNIT	11	11			
X5537800	STORM SEWERS TO BE CLEANED 12"	FOOT	3500	3500			
X6030310	FRAMES AND LIDS TO BE ADJUSTED (SPECIAL)	EACH	56	56			
X7030005	TEMPORARY PAVEMENT MARKING REMOVAL	SO FT	399	399			
Z0004562	COMBINATION CONCRETE CURB AND GUTTER REMOVAL AND REPLACEMENT	FOOT	1575	1575			
Z0018500	DRAINAGE STRUCTURES TO BE CLEANED	EACH	70	70			
Z0030850	TEMPORARY INFORMATION SIGNING	SO FT	51.4	51.4			

1575 1575 

FILE NAME =	USER NAME = STEEOPA	DESIGNED -	REVISED -
OR 11/18/17 11:17 AM Project: 2016-034RS Cook County Design: 2016-034RS		CHECKED -	REVISED -
PLOT SCALE = 100,0000 1/16"		DATE -	REVISED -
PLOT DATE = 2/17/2017			

STATE OF ILLINOIS
DEPARTMENT OF TRANSPORTATION

SUMMARY OF QUANTITIES
FAU 2886 /OR 60 (HALSTED ST.)—IL 1 CUTOFF TO 15TH ST.

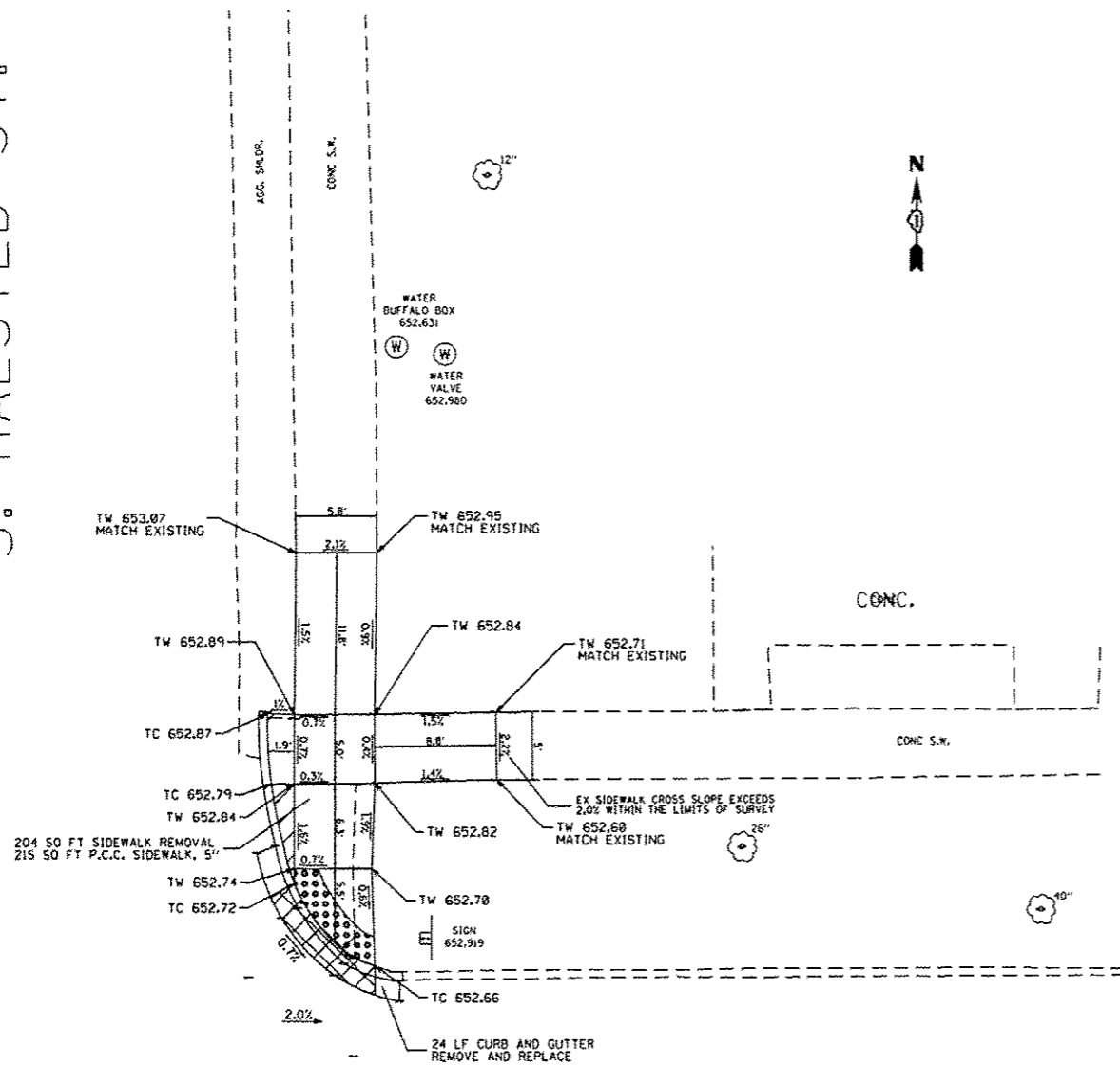
F.A.U. RTE. 2886	SECTION 2016-034RS	COUNTY COOK	TOTAL SHEETS 26	SHEET NO. 4
FED. ROAD DIST. NO. 1 ILLINOIS FED. AID PROJECT			CONTRACT NO. 62C46	

* SPECIALTY ITEMS
 NON-PARTICIPATING ITEMS

13

2016-034RS

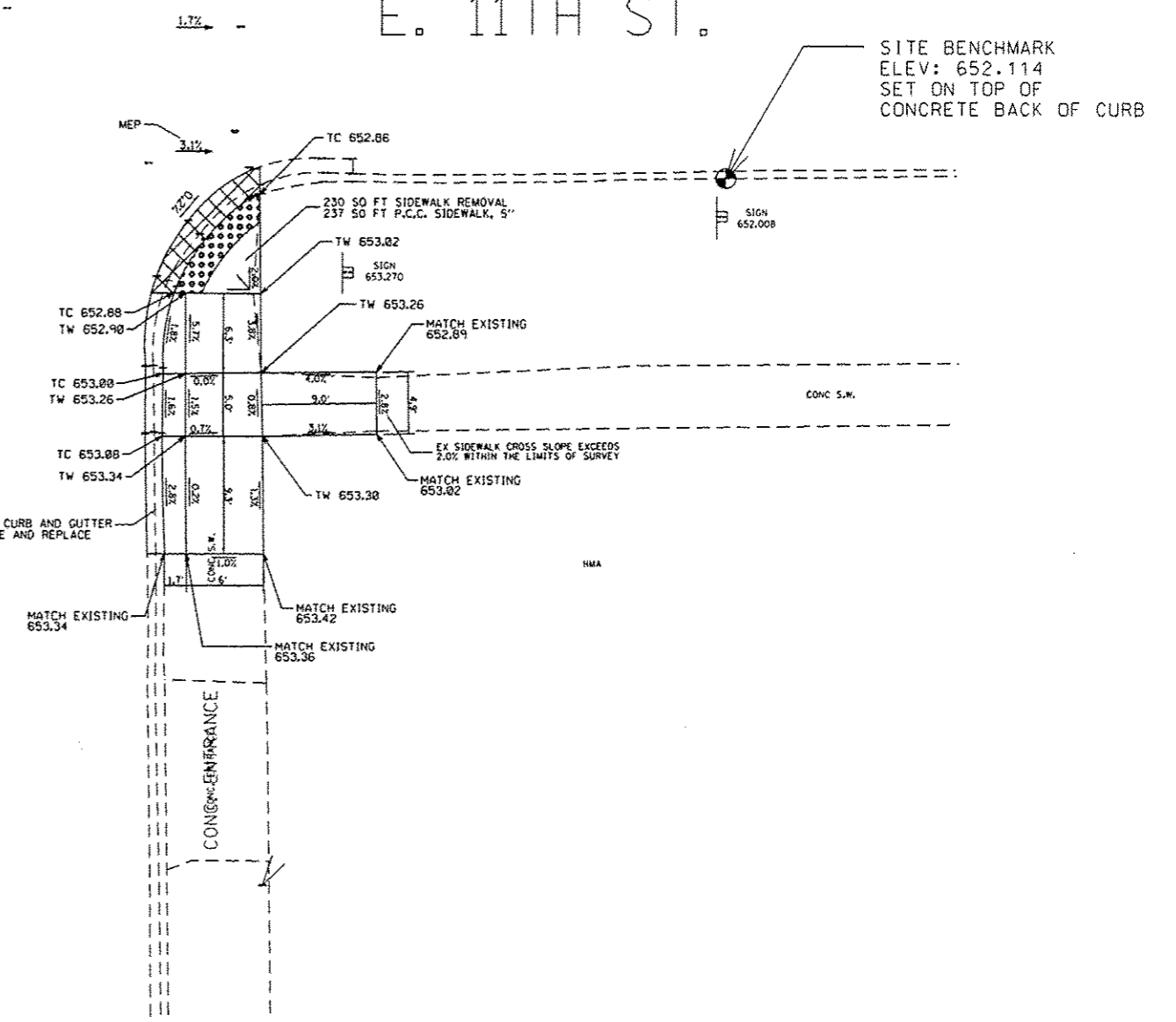
S. HALSTED ST.



E. 11TH ST.

E. 11TH ST.

S. HALSTED ST.



SITE BENCHMARK
ELEV: 652.114
SET ON TOP OF
CONCRETE BACK OF CURB

BENCH MARK ELEV: 652.11

BENCHMARK: TOP OF CONCRETE BACK OF CURB

LOCATION: CONCRETE BACK OF CURB APPROXIMATELY 37FT EAST OF SOUTH EAST CORNER OF HALSTED ST AND 11TH ST.

LEGEND

XX.XX'

EXISTING LENGTH

==

PROPOSED SIDE CURB

()

EXISTING ELEVATION/SLOPE



PROPOSED SIDEWALK



DETECTABLE WARNINGS



DEPRESSED CURB AND GUTTER

BENCH MARK ELEV: 652.11

BENCHMARK: TOP OF CONCRETE BACK OF CURB

LOCATION: CONCRETE BACK OF CURB APPROXIMATELY 37FT EAST OF SOUTH EAST CORNER OF HALSTED ST AND 11TH ST.

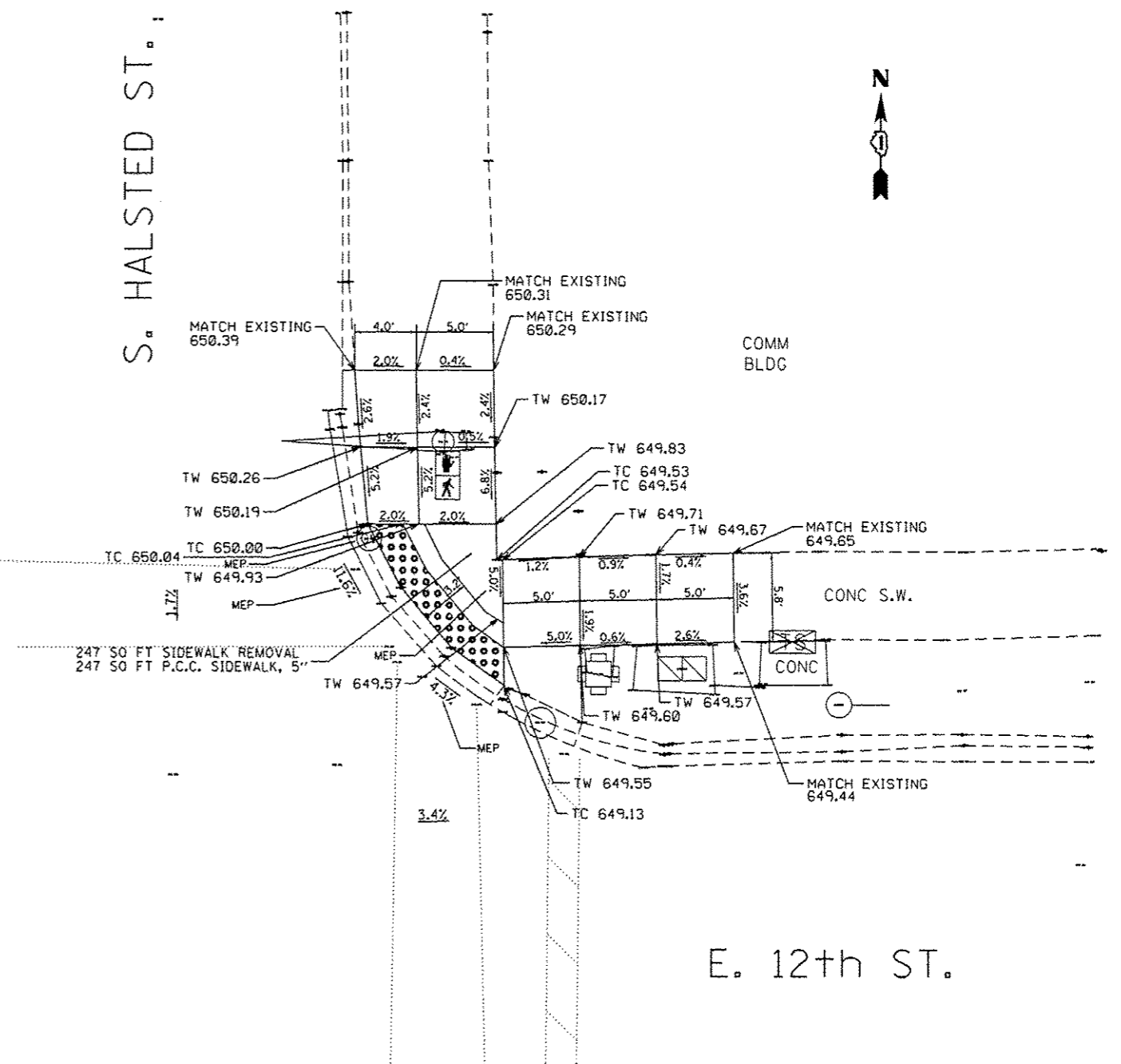
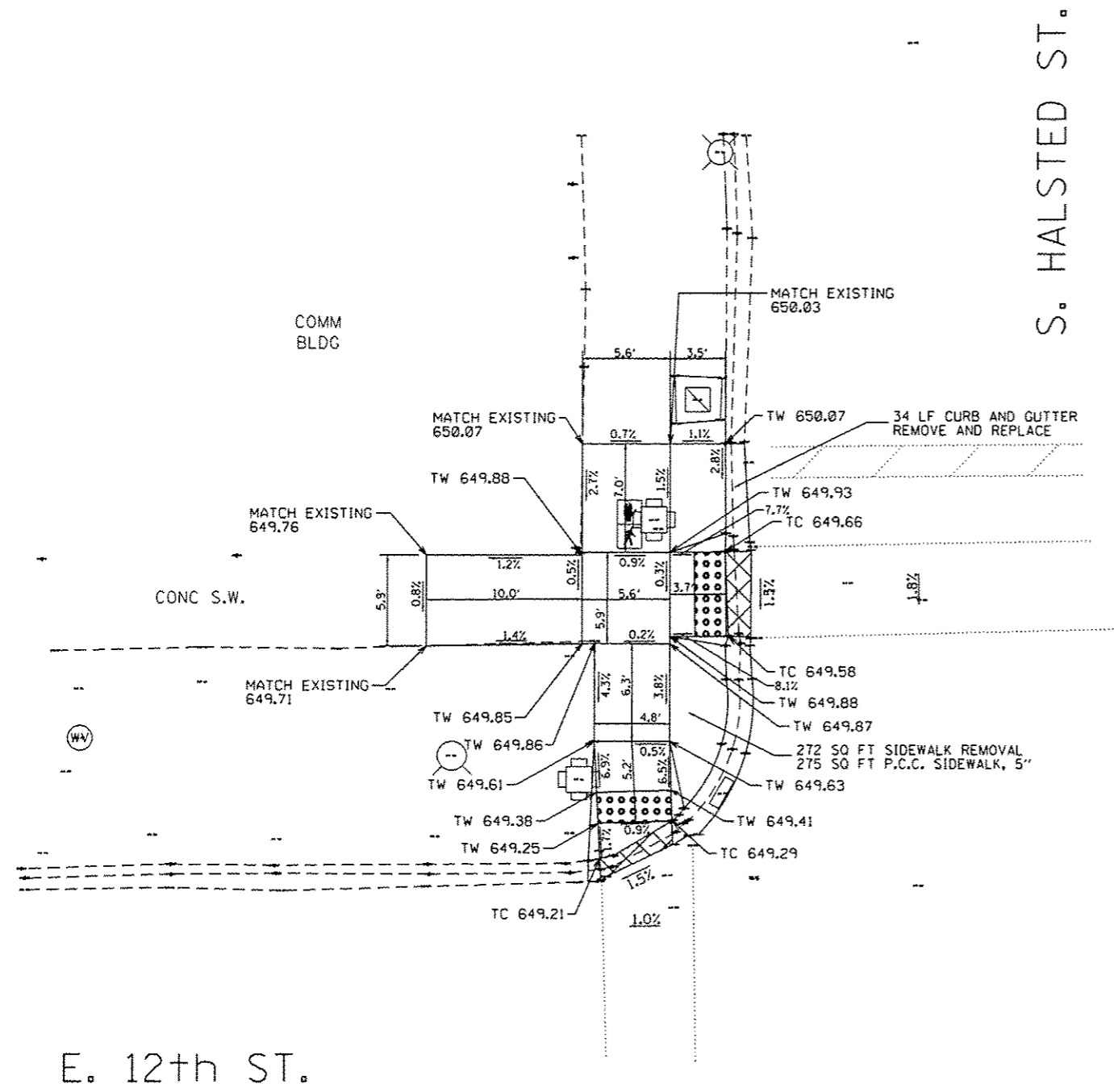
FILE NAME : p:\11884E01\INTEG\Illinois.gov\PW\DOT\Documents\1001 Offices\District 1\Projects\DI3530\Drawings\Design\DI35316-ADA.dgn	USER NAME : STEEDPA	DESIGNED -	REVISED -
PLOT SCALE = 20,0000 / 1"	CHECKED -	REVISED -	REVISED -
PLOT DATE = 4/14/2017	DATE -	REVISED -	REVISED -

STATE OF ILLINOIS
DEPARTMENT OF TRANSPORTATION

ADA RAMP DETAILS (HALSTED ST. AT 11TH ST.)
FAU 2886 /OR 60 (HALSTED ST.)—IL 1 CUTOFF TO 15TH ST.

F.A.U. RTE. 2886	SECTION 2016-034RS	COUNTY COOK	TOTAL SHEETS 26	SHEET NO. 11A
CONTRACT NO. 62C46				ILLINOIS FED. AID PROJECT

Sheet Added 4-18-17



BENCH MARK ELEV: 650.25
 BENCHMARK: SQUARE CUT IN SOUTHWEST SIDE OF TRAFFIC SIGNAL BASE
 LOCATION: BASE IS NORTHEAST CORNER OF 12TH ST. AND HALSTED ST.

LEGEND	
XX.XX'	EXISTING LENGTH
==	PROPOSED SIDE CURB
()	EXISTING ELEVATION/SLOPE
[]	PROPOSED SIDEWALK
[•••••]	DETECTABLE WARNINGS
[X X X X]	DEPRESSED CURB AND GUTTER

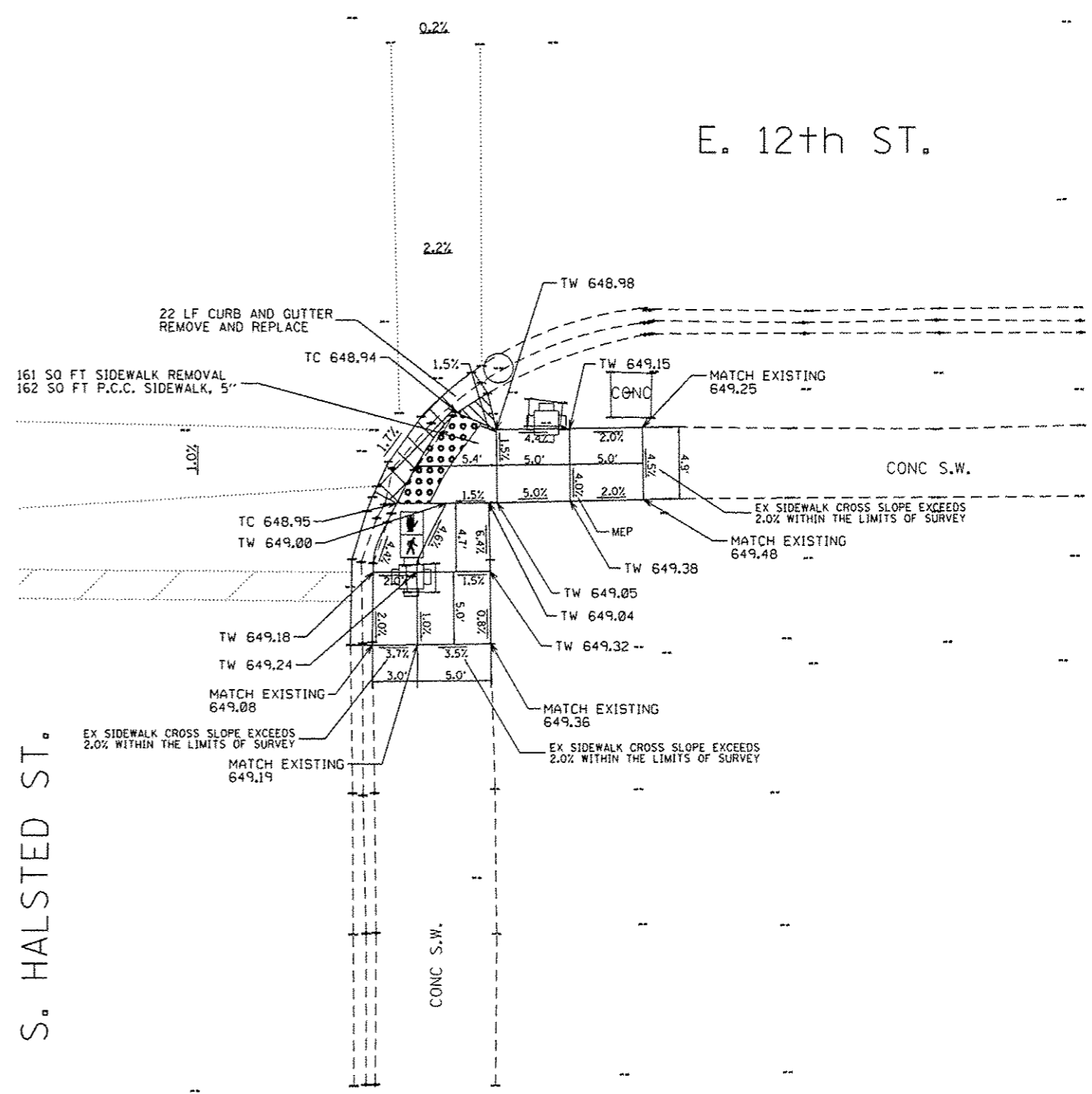
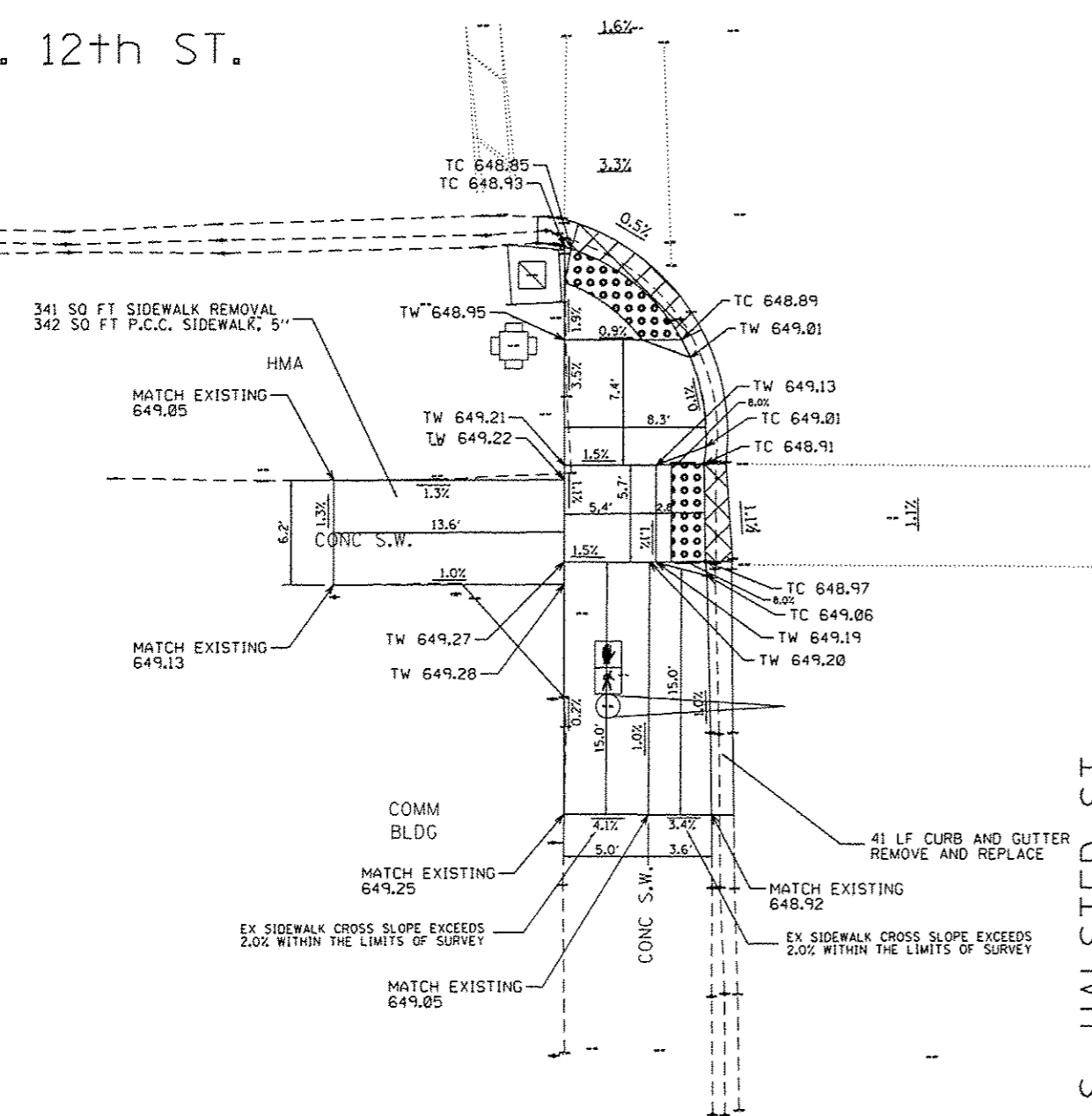
BENCH MARK ELEV: 650.25
 BENCHMARK: SQUARE CUT IN SOUTHWEST SIDE OF TRAFFIC SIGNAL BASE
 LOCATION: BASE IS NORTHEAST CORNER OF 12TH ST. AND HALSTED ST.

FILE NAME :	USER NAME = STEEDPA	DESIGNED -	REVISED -	STATE OF ILLINOIS DEPARTMENT OF TRANSPORTATION	ADA RAMP DETAILS (HALSTED ST. AT 12TH ST.) FAU 2886 /OR 60 (HALSTED ST.)—IL 1 CUTOFF TO 15TH ST.	F.A.U. RTE.	SECTION	COUNTY	TOTAL SHEETS	SHEET NO.
Default	Documents\DOT Offices\District 1\Projects\0135\DRAWING\Design\0135316-ADA.dgn	CHECKED -	REVISED -			2886	2015-034RS	COOK	26	11B
	PLOT SCALE = 20,0000' / in.	DATE -	REVISED -			CONTRACT NO. 62C46				

Sheet Added 4-18-17

E. 12th ST.

E. 12th ST.



S. HALSTED ST.

S. HALSTED ST.

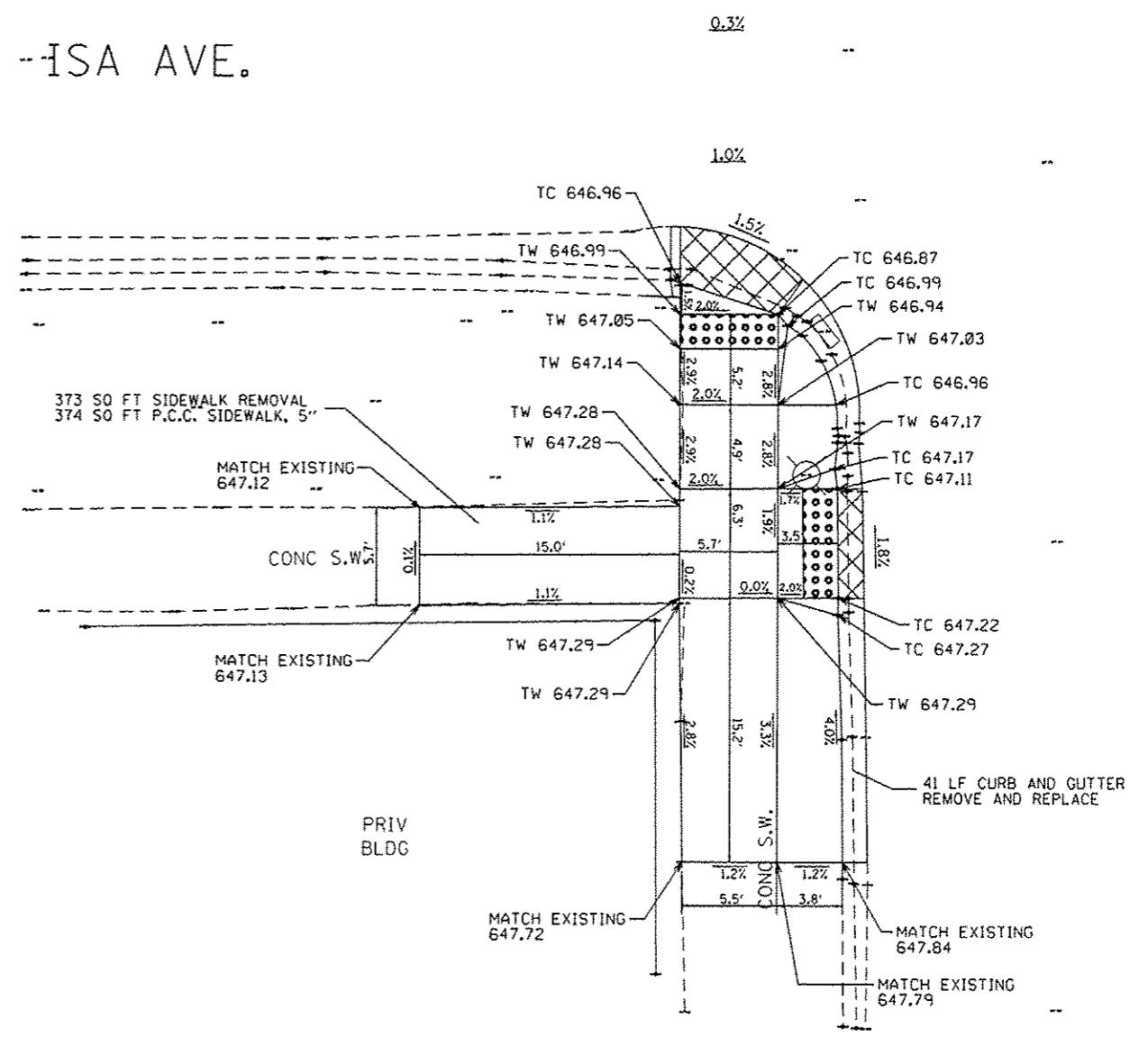
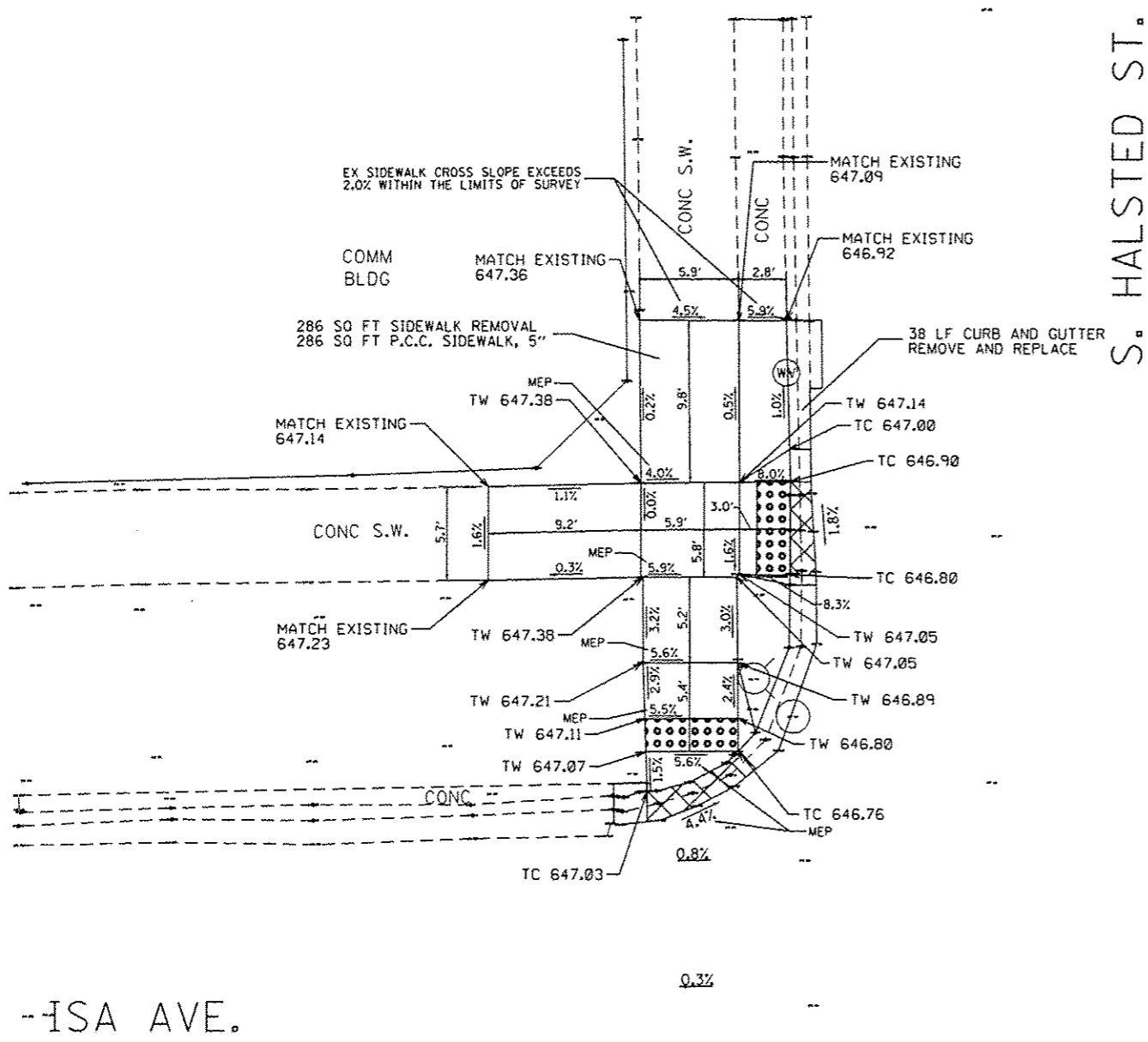
BENCH MARK ELEV: 650.25
 BENCHMARK: SQUARE CUT IN SOUTHWEST SIDE OF TRAFFIC SIGNAL BASE
 LOCATION: BASE AT NORTHEAST CORNER OF 12TH ST. AND HALSTED ST.

BENCH MARK ELEV: 650.25
 BENCHMARK: SQUARE CUT IN SOUTHWEST SIDE OF TRAFFIC SIGNAL BASE
 LOCATION: BASE AT NORTHEAST CORNER OF 12TH ST. AND HALSTED ST.

LEGEND	
xx.xx'	EXISTING LENGTH
	PROPOSED SIDE CURB
()	EXISTING ELEVATION/SLOPE
	PROPOSED SIDEWALK
	DETECTABLE WARNINGS
	DEPRESSED CURB AND GUTTER

FILE NAME: p:\IL084EBI\INTEG\Illinois.gov\PI\DOT\Documents\DOT Offices\District 1\Projects\DI25\BROW\Brow\Design\DI25316-ADA.dgn	USER NAME: STEEDPA	DESIGNED: -	REVISED: -	STATE OF ILLINOIS DEPARTMENT OF TRANSPORTATION	ADA RAMP DETAILS (HALSTED ST. AT 12TH ST.) FAU 2886 /OR 60 (HALSTED ST.)—IL 1 CUTOFF TO 15TH ST.	F.A.U. RTE. 2886	SECTION 2016-034RS	COUNTY COOK	TOTAL SHEETS 26	SHEET NO. 11C
PLOT SCALE: 20,000 / in.	PLOT DATE: 4/14/2017	CHECKED: -	DATE: -	SCALE: 1"=5'	SHEET OF SHEETS STA. TO STA.	CONTRACT NO. 62C46 ILLINOIS FED. AID PROJECT				

Sheet Added 4-18-17



S. HALSTED ST.

S. HALSTED ST.

BENCH MARK ELEV: 649.20
 BENCHMARK: "Y" CUT ON NORTHWEST BOLT OF FIRE HYDRANT
 LOCATION: "Y" CUT ON NORTHWEST BOLT AT NORTHWEST CORNER OF ISA AVE. AND HALSTED ST.

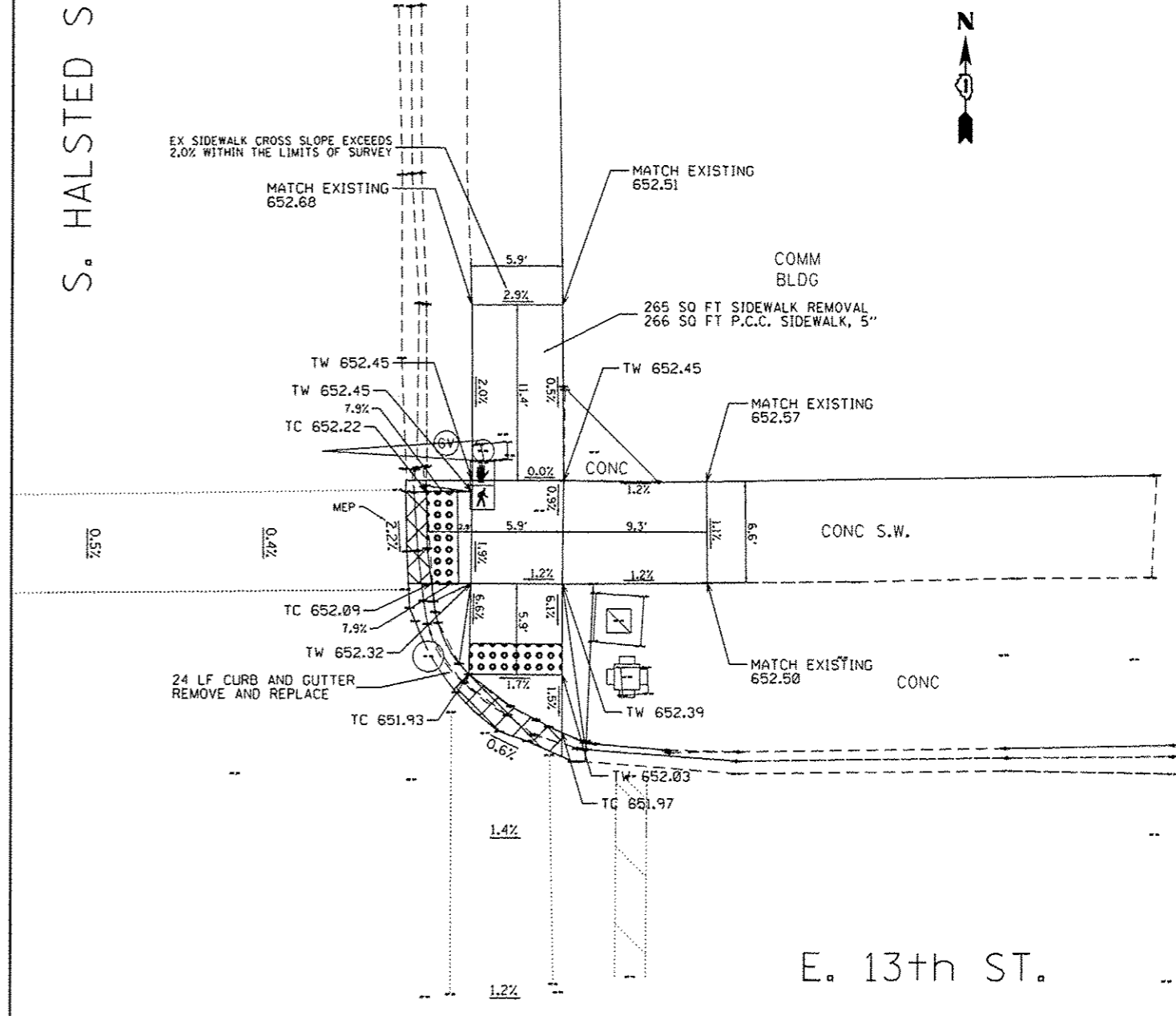
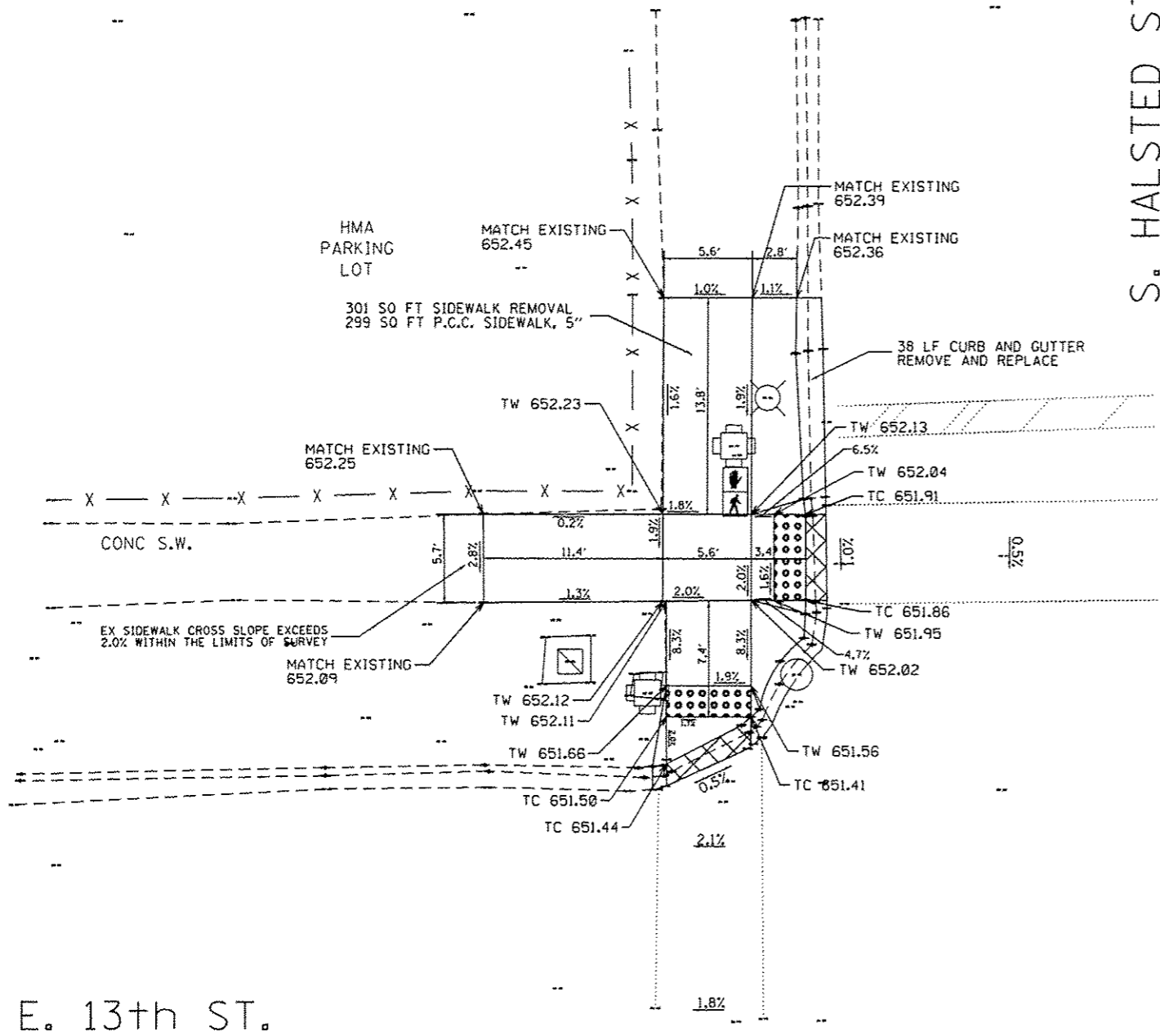
LEGEND

- xx.xx' EXISTING LENGTH
- PROPOSED SIDE CURB
- () EXISTING ELEVATION/SLOPE
- PROPOSED SIDEWALK
- DETECTABLE WARNINGS
- DEPRESSED CURB AND GUTTER

BENCH MARK ELEV: 649.20
 BENCHMARK: "Y" CUT ON NORTHWEST BOLT OF FIRE HYDRANT
 LOCATION: "Y" CUT ON NORTHWEST BOLT AT NORTHWEST CORNER OF ISA AVE. AND HALSTED ST.

FILE NAME :	USER NAME : STEEDPA	DESIGNED -	REVISED -	STATE OF ILLINOIS DEPARTMENT OF TRANSPORTATION	ADA RAMP DETAILS (HALSTED ST. AT ISA AVE.) FAU 2886 /OR 60 (HALSTED ST.)--IL 1 CUTOFF TO 15TH ST.	F.A.U. RTE. 2886	SECTION 2016-034RS	COUNTY COOK	TOTAL SHEETS 26	SHEET NO. 110
PLDT SCALE : 20,0000 ' = 1" in.	PLDT DATE : 4/14/2017	CHECKED -	REVISED -	SCALE: 1"=5'		SHEET OF SHEETS STA. TO STA.		CONTRACT NO. 62C46		
ILLINOIS FED. AID PROJECT										

△ Sheet Added 4-18-17



BENCH MARK ELEV: 652.42
 BENCHMARK: SQUARE CUT ON NORTHEAST CORNER OF TRAFFIC SIGNAL BASE
 LOCATION: SQUARE CUT ON SOUTHWEST CORNER OF 13TH ST. AND HALSTED ST.

LEGEND

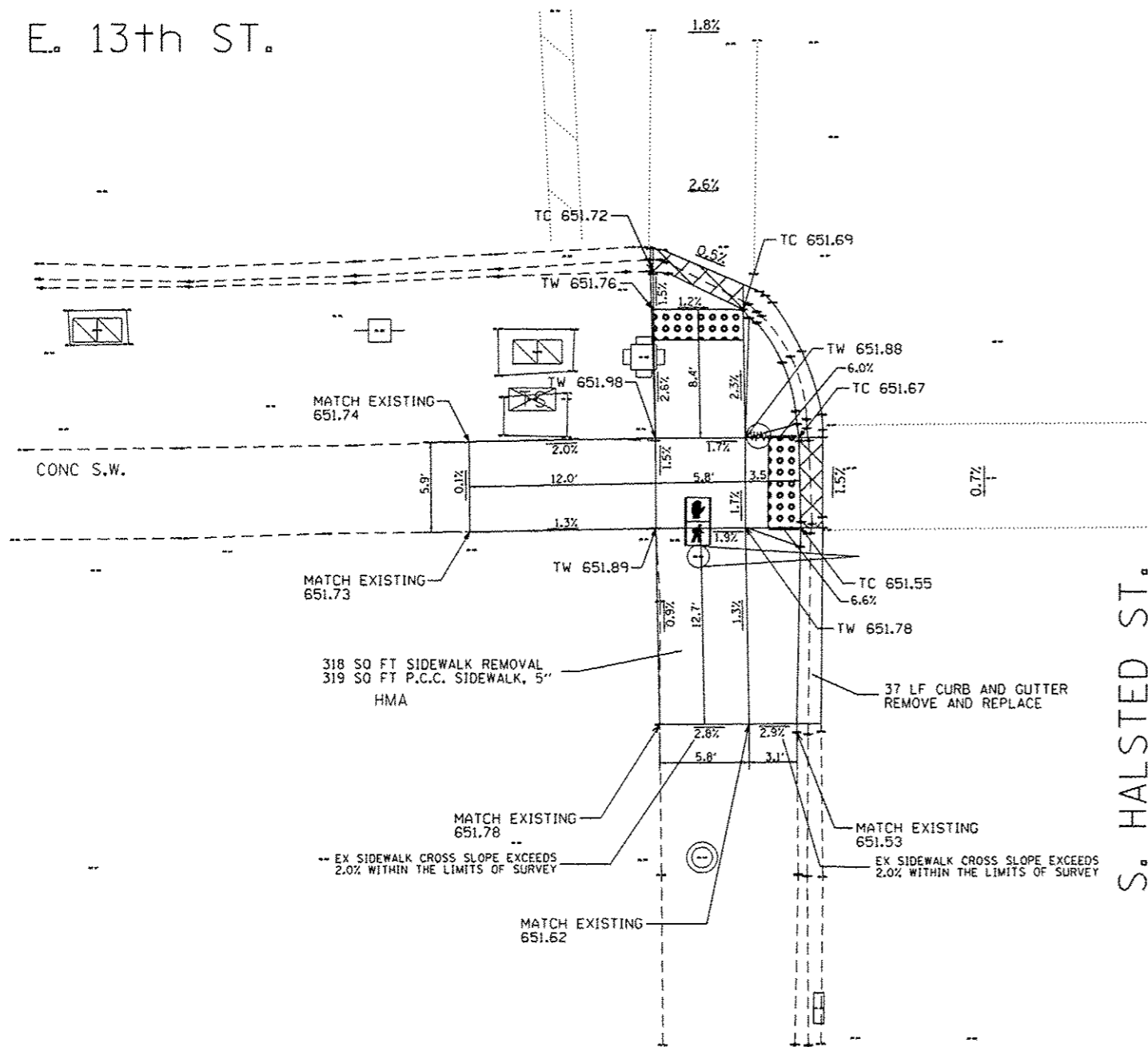
XX.XX'	EXISTING LENGTH		PROPOSED SIDEWALK
	PROPOSED SIDE CURB		DETECTABLE WARNINGS
	EXISTING ELEVATION/SLOPE		DEPRESSED CURB AND GUTTER

BENCH MARK ELEV: 652.42
 BENCHMARK: SQUARE CUT ON NORTHEAST CORNER OF TRAFFIC SIGNAL BASE
 LOCATION: SQUARE CUT ON SOUTHWEST CORNER OF 13TH ST. AND HALSTED ST.

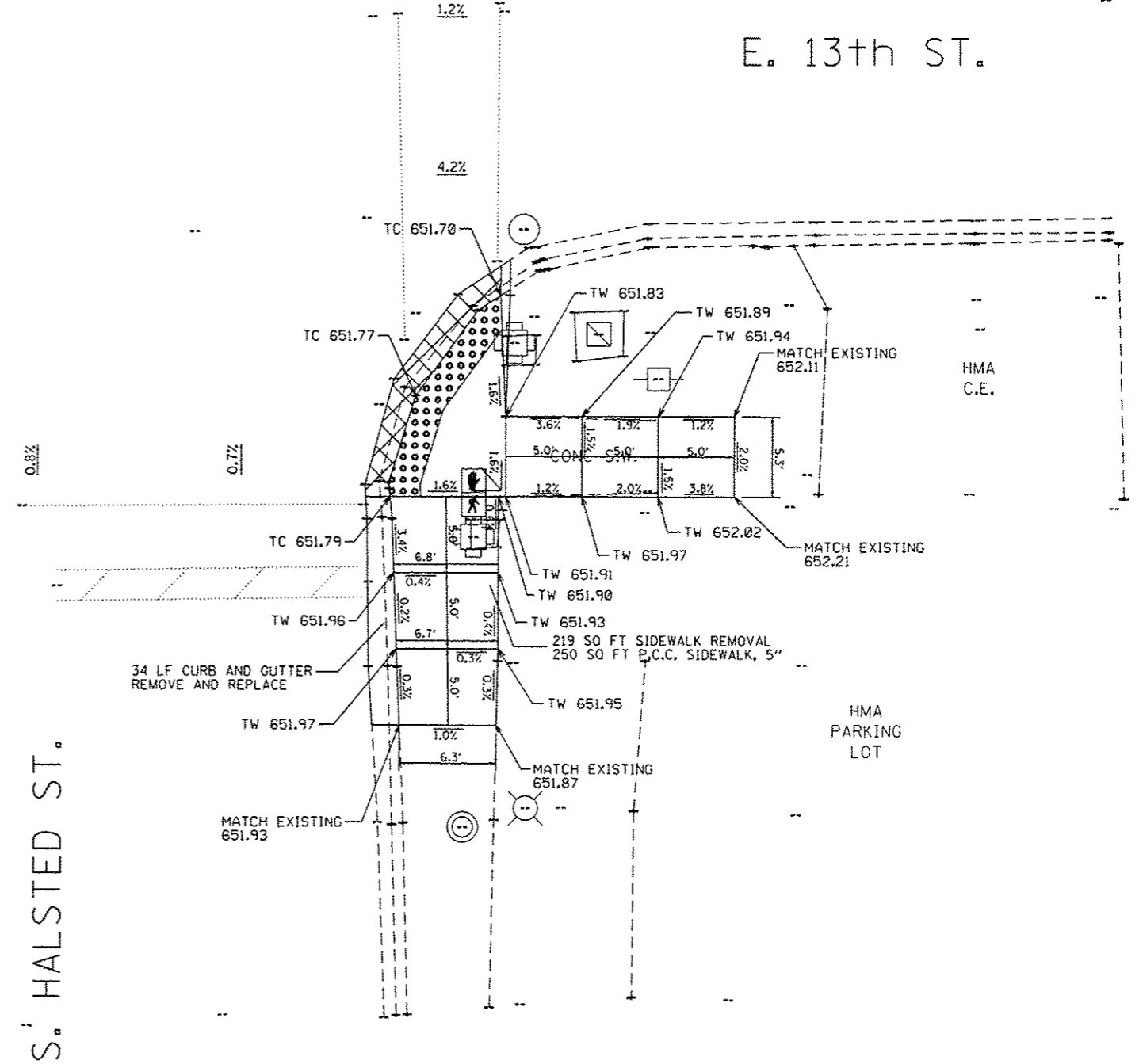
FILE NAME: p:\11084EBI\INTEG\Illinois.gov\PWIDOT\Documents\DOT Offices\District 1\Projects\DI38\BROWNS\Design\DI38316-ADA.dgn	USER NAME: STEEDPA	DESIGNED: -	REVISED: -	STATE OF ILLINOIS DEPARTMENT OF TRANSPORTATION	ADA RAMP DETAILS (HALSTED ST. AT 13TH ST.) FAU 2886 /OR 60 (HALSTED ST.)—IL 1 CUTOFF TO 15TH ST.	F.A.U. RTE.: 2886	SECTION: 2016-034RS	COUNTY: COOK	TOTAL SHEETS: 26	SHEET NO.: 11E	
Default	PLOT SCALE: 20.0000' / in.	CHECKED: -	REVISED: -			SCALE: 1"=5'	SHEET OF SHEETS: STA. TO STA.	CONTRACT NO. 62C46			
	PLOT DATE: 4/14/2017	DATE: -	REVISED: -			ILLINOIS FED. AID PROJECT					

Sheet Added 4-18-17

E. 13th ST.



E. 13th ST.



BENCH MARK ELEV: 652.42

BENCHMARK: SQUARE CUT ON NORTHEAST CORNER OF TRAFFIC SIGNAL BASE

LOCATION: SQUARE CUT ON SOUTHWEST CORNER OF 13TH ST. AND HALSTED ST.

LEGEND



EXISTING LENGTH



PROPOSED SIDE CURB



EXISTING ELEVATION/SLOPE



PROPOSED SIDEWALK



DETECTABLE WARNINGS



DEPRESSED CURB AND GUTTER

BENCH MARK ELEV: 652.42

BENCHMARK: SQUARE CUT ON NORTHEAST CORNER OF TRAFFIC SIGNAL BASE

LOCATION: SQUARE CUT ON SOUTHWEST CORNER OF 13TH ST. AND HALSTED ST.

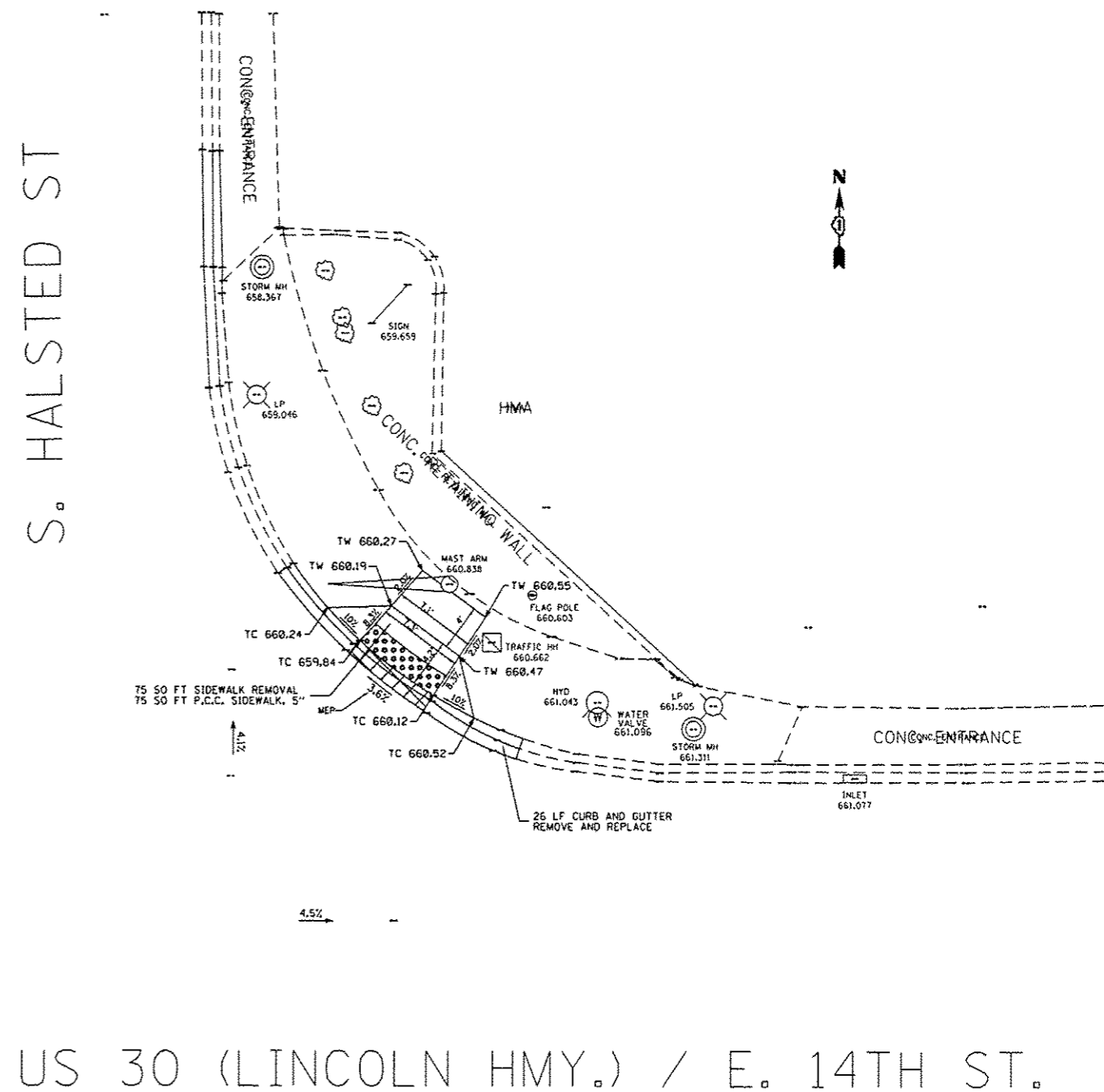
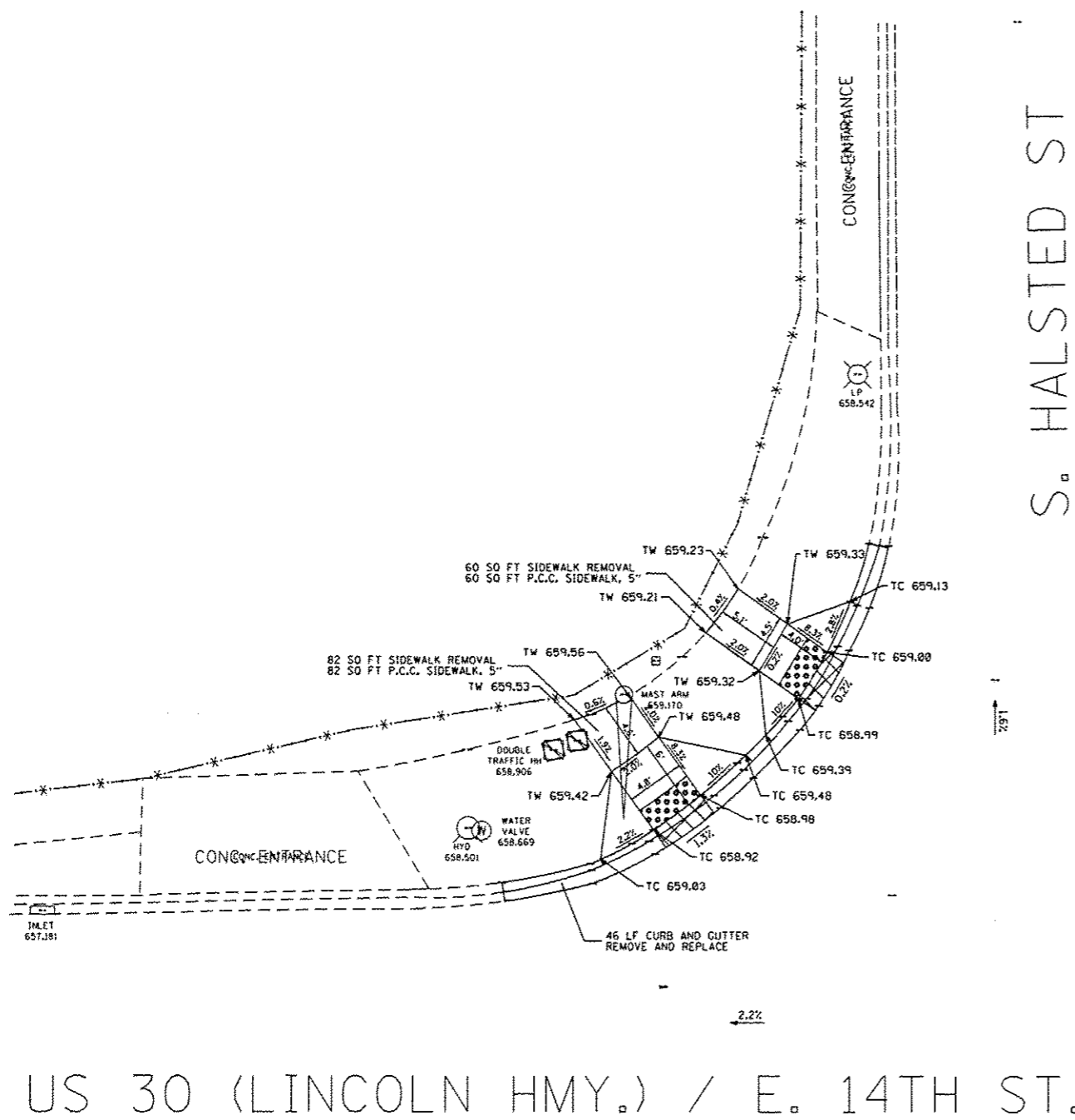
FILE NAME :	USER NAME : STEEOPA	DESIGNED -	REVISED -
Documents\DOT Offices\District 1\Projects\0135\Drawings\Design\0135316-ADA.dgn		REVISED -	REVISED -
PLOT SCALE = 20.0000' / in.	CHECKED -	REVISED -	REVISED -
PLOT DATE = 4/14/2017	DATE -	REVISED -	REVISED -

STATE OF ILLINOIS
DEPARTMENT OF TRANSPORTATION

ADA RAMP DETAILS (HALSTED ST. AT 13TH ST.)
FAU 2886 /OR 60 (HALSTED ST.)—IL 1 CUTOFF TO 15TH ST.

F.A.U. RTE. 2886	SECTION 2016-034RS	COUNTY COOK	TOTAL SHEETS 26	SHEET NO. 11F
CONTRACT NO. 62C46			ILLINOIS FED. AID PROJECT	

Sheet Added 4-18-17



BENCH MARK ELEV: 660.80

BENCHMARK: SQUARE CUT ON NORTHEAST CORNER OF TRAFFIC SIGNAL BASE

LOCATION: SQUARE CUT ON SOUTHWEST CORNER OF US 30 (LINCOLN HWY.) / 14TH ST. AND HALSTED ST.

LEGEND



EXISTING LENGTH



PROPOSED SIDE CURB



EXISTING ELEVATION/SLOPE



PROPOSED SIDEWALK



DETECTABLE WARNINGS



DEPRESSED CURB AND GUTTER

BENCH MARK ELEV: 660.80

BENCHMARK: SQUARE CUT ON NORTHEAST CORNER OF TRAFFIC SIGNAL BASE

LOCATION: SQUARE CUT ON SOUTHWEST CORNER OF US 30 (LINCOLN HWY.) / 14TH ST. AND HALSTED ST.

FILE NAME =	USER NAME = STEEDPA	DESIGNED -	REVISED -
p:\11084EBI\INTEG.Illinois.gov\PI\DOT\Do	umensis\DOT\Office\District 1\Projects\0135216-ADA.dgn	DESIGNED -	REVISED -
Default	PLOT SCALE = 20.0000 "/td> <td>CHECKED -</td> <td>REVISED -</td>	CHECKED -	REVISED -
	PLOT DATE = 4/14/2017	DATE -	REVISED -

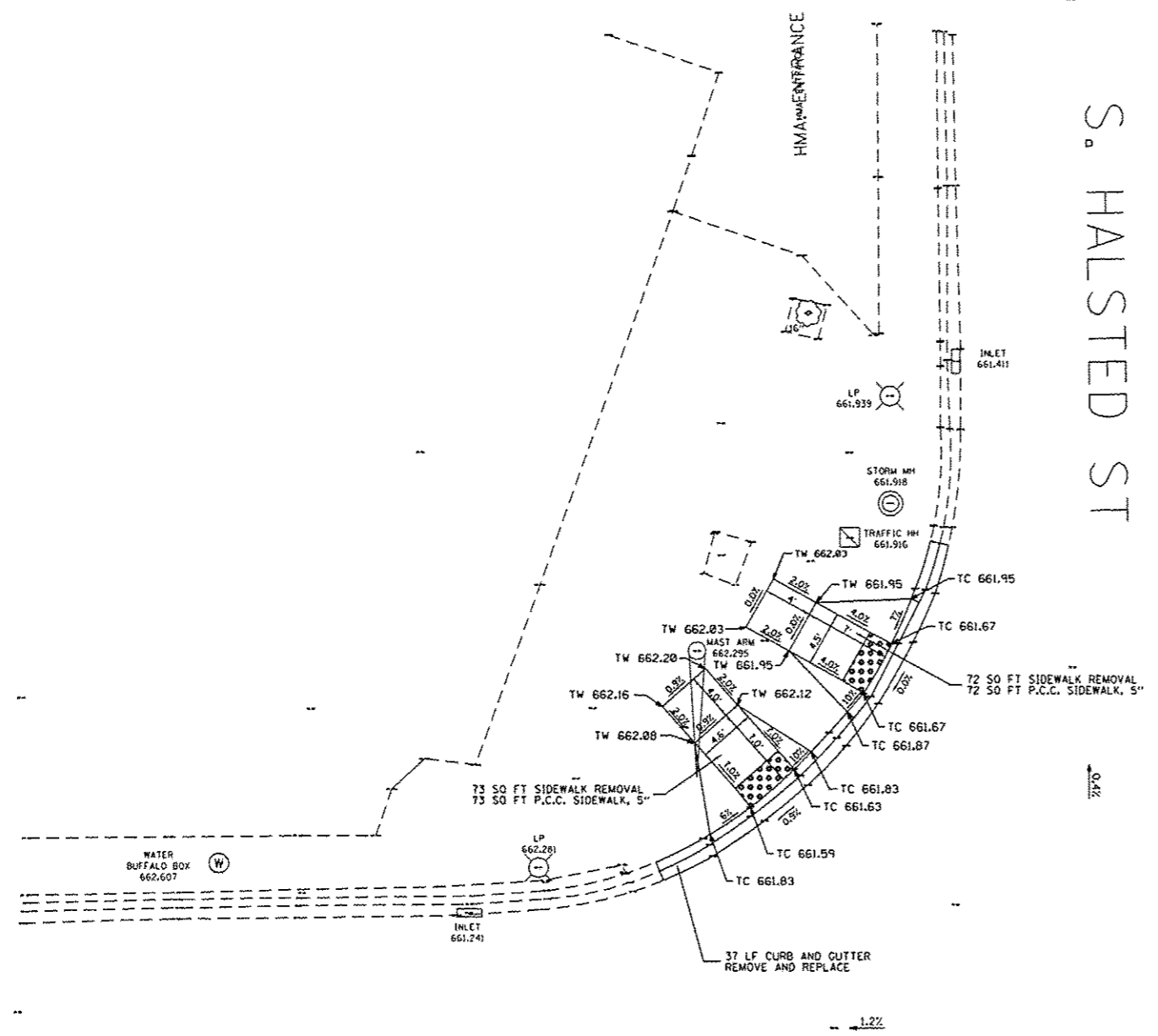
STATE OF ILLINOIS
DEPARTMENT OF TRANSPORTATION

ADA RAMP DETAILS (HALSTED ST. AT US 30 / LINCOLN HWY. / 14TH ST.)
FAU 2886 / OR 60 (HALSTED ST.)—IL 1 CUTOFF TO 15TH ST.

SCALE: 1"=5' SHEET OF SHEETS STA. TO STA.

F.A.U. RTE.	SECTION	COUNTY	TOTAL SHEETS	SHEET NO.
2886	2016-034RS	COOK	26	11C
CONTRACT NO. 62C46				
ILLINOIS FED. AID PROJECT				

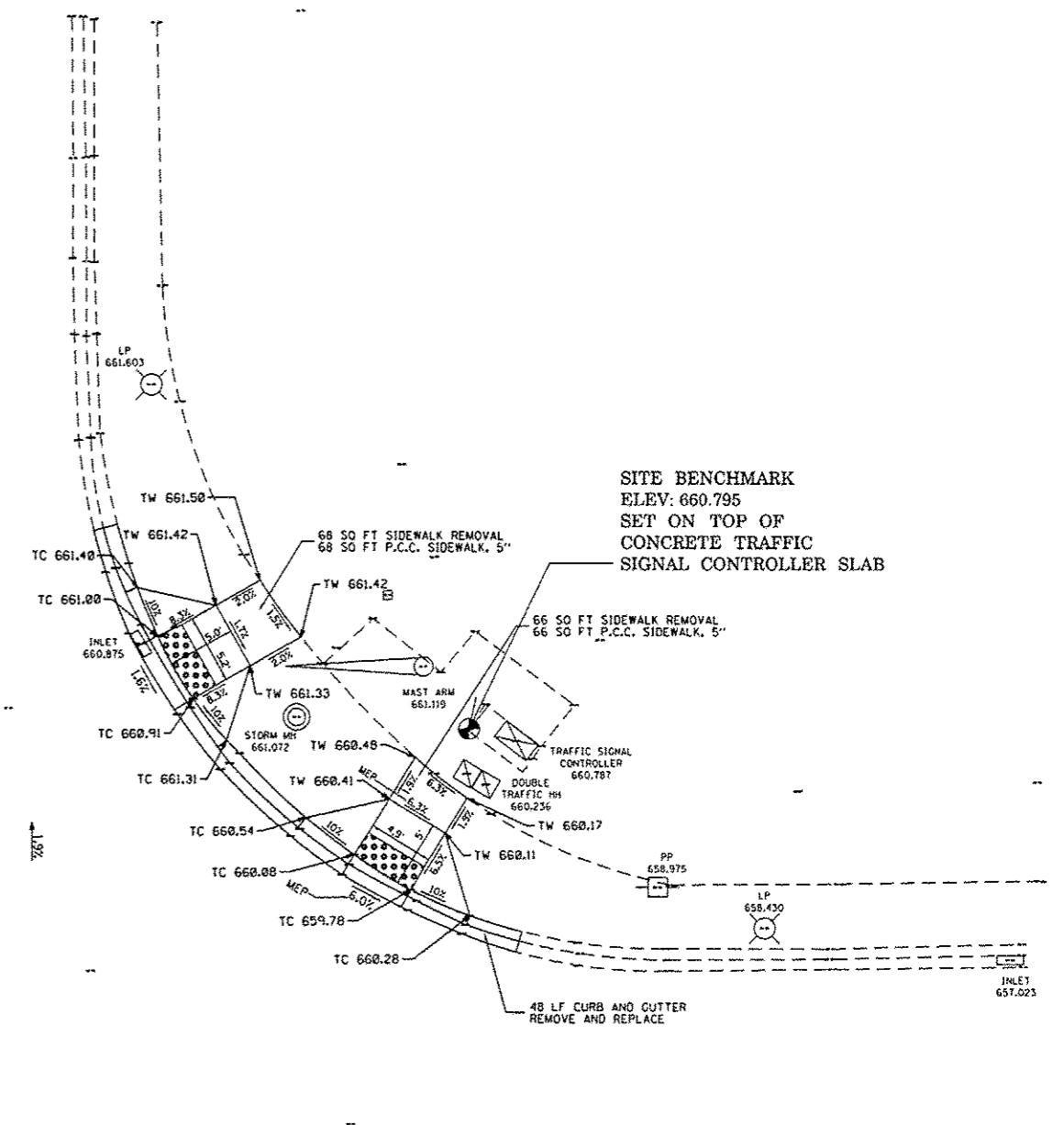
Sheet Added 4-18-17



S. HALSTED ST

US 30 (LINCOLN HMY.) / E. 14TH ST.

S. HALSTED ST



SITE BENCHMARK
ELEV: 660.795
SET ON TOP OF
CONCRETE TRAFFIC
SIGNAL CONTROLLER SLAB

US 30 (LINCOLN HMY.) / E. 14TH ST.

BENCH MARK ELEV: 660.80
BENCHMARK: SQUARE CUT ON NORTHEAST CORNER OF TRAFFIC SIGNAL BASE
LOCATION: SQUARE CUT ON SOUTHWEST CORNER OF US 30 (LINCOLN HWY.) / 14TH ST. AND HALSTED ST.

LEGEND

XX.XX'	EXISTING LENGTH		DETECTABLE WARNINGS
==	PROPOSED SIDE CURB		DEPRESSED CURB AND GUTTER
()	EXISTING ELEVATION/SLOPE		PROPOSED SIDEWALK

BENCH MARK ELEV: 660.80
BENCHMARK: SQUARE CUT ON NORTHEAST CORNER OF TRAFFIC SIGNAL BASE
LOCATION: SQUARE CUT ON SOUTHWEST CORNER OF US 30 (LINCOLN HWY.) / 14TH ST. AND HALSTED ST.

FILE NAME :	USER NAME = STEEDPA	DESIGNED -	REVISED -	STATE OF ILLINOIS DEPARTMENT OF TRANSPORTATION	ADA RAMP DETAILS (HALSTED ST. AT US 30 /LINCOLN HWY./14TH ST.) FAU 2886 /OR 60 (HALSTED ST.)—IL 1 CUTOFF TO 15TH ST.	F.A.U. RTE.	SECTION	COUNTY	TOTAL SHEETS	SHEET NO.
	PLDT SCALE = 20,0000' / 1" = 200'	CHECKED -	REVISED -			2886	2016-034R5	COOK	26	11H
Default	PLDT DATE = 4/14/2017	DATE -	REVISED -			SCALE: 1"=5'		SHEET OF SHEETS		STA. TO STA.

Sheet Added 4-18-17