

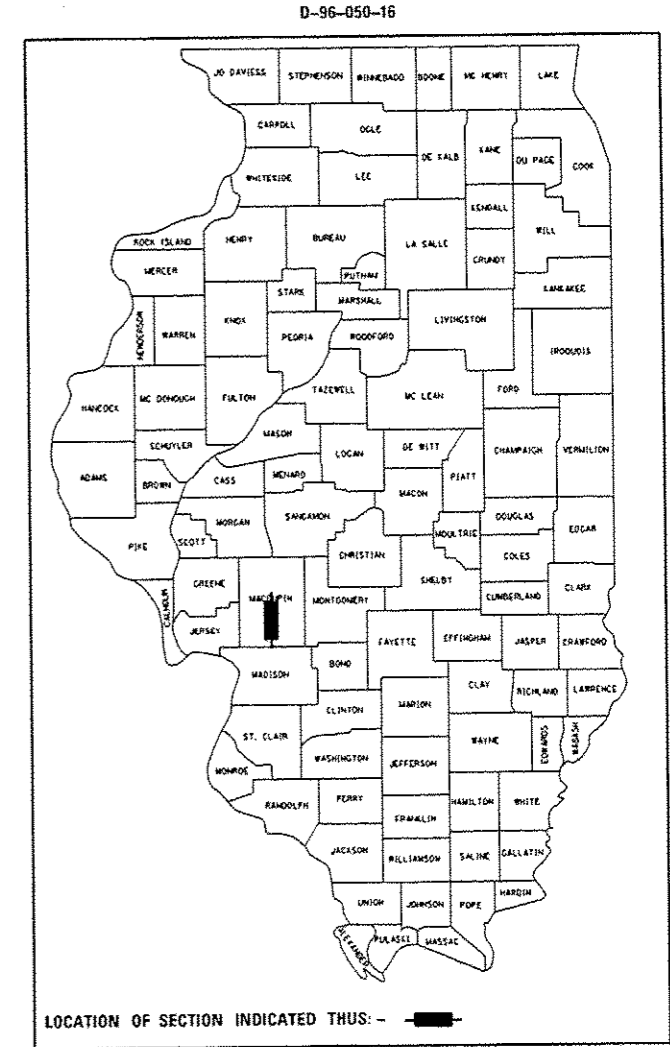
STATE OF ILLINOIS  
DEPARTMENT OF TRANSPORTATION

F.A.P. RTE.	SECTION	COUNTY	TOTAL SHEETS	SHEET NO.
604	D6 MACOUPIN CO. ADA	MACOUPIN	33	1
ILLINOIS CONTRACT NO.			72J13	

# PROPOSED HIGHWAY PLANS

FAP ROUTE 604 (IL 159)  
SECTION D6 MACOUPIN CO. ADA  
PROJECT STP-0604(026)  
SIDEWALK IMPROVEMENTS IN BUNKER HILL  
MACOUPIN COUNTY

C-96-050-16

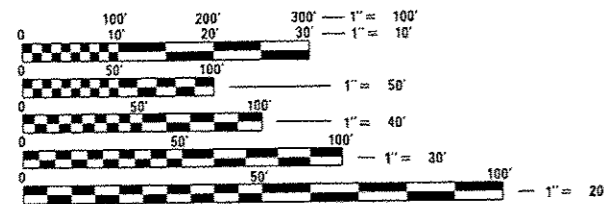


**INDEX OF SHEETS**

- 1 COVER SHEET
- 2 GENERAL NOTES
- 3-4 SUMMARY OF QUANTITIES
- 5-6 SCHEDULE OF QUANTITIES
- 7 ALIGNMENT AND SIDE ROAD LAYOUT
- 8-29 PLAN AND PROFILE SHEETS
- 30 DRAINAGE PLAN SHEET
- 31-33 DETAIL SHEETS

**STANDARDS**

- |           |           |
|-----------|-----------|
| 000001-06 | 604046-03 |
| 001001-02 | 606001-06 |
| 001006    | 701001-02 |
| 424001-09 | 701006-05 |
| 424021-03 | 701501-06 |
| 542301-03 | 701801-06 |
| 542401-02 | 701901-06 |
| 604006-05 | 780001-05 |
| 604036-03 |           |

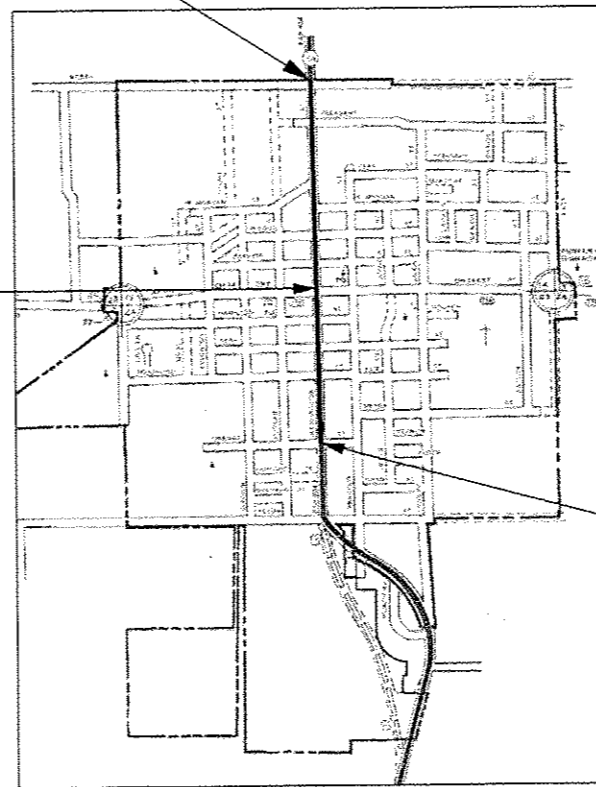


FULL SIZE PLANS HAVE BEEN PREPARED USING STANDARD ENGINEERING SCALES. REDUCED SIZED PLANS WILL NOT CONFORM TO STANDARD SCALES. IN MAKING MEASUREMENTS ON REDUCED PLANS, THE ABOVE SCALES MAY BE USED.

J.U.L.I.E.  
JOINT UTILITY LOCATION INFORMATION FOR EXCAVATION  
1-800-892-0123  
OR 811

IMPROVEMENT BEGINS  
NEW LAKE RD.  
STA. 179+78.38

STATION EQUATION  
205+49.85 BK =  
0+00.00 AH



IMPROVEMENT ENDS  
ORANGE ST.  
STA. 17+98.60

PROJECT ENGINEER: JAY WAVERING 217-785-9046  
PROJECT MANAGER: JON KELLEY 217-785-2739

GROSS LENGTH = 4370 FT. = 0.83 MILE  
NET LENGTH = 4370 FT. = 0.83 MILE

CONTRACT NO. 72J13

STATE OF ILLINOIS  
DEPARTMENT OF TRANSPORTATION

SUBMITTED 3 February 2017

[Signature]  
REGIONAL ENGINEER

Mar 24 2017  
Mareem M. Ades PE  
ENGINEER OF DESIGN AND ENVIRONMENT

Mar 24 2017  
[Signature]  
DIRECTOR OF PROGRAM DEVELOPMENT

PRINTED BY THE AUTHORITY  
OF THE STATE OF ILLINOIS

**GENERAL NOTES**

1. WHERE SECTION OR SUB-SECTION MONUMENTS ARE ENCOUNTERED, THE ENGINEER SHALL BE NOTIFIED BEFORE SUCH MONUMENTS ARE REMOVED. THE CONTRACTOR SHALL PROTECT AND CAREFULLY PRESERVE ALL PROPERTY MARKERS AND MONUMENTS UNTIL THE OWNER AND AN AUTHORIZED LAND SURVEYOR OR AGENT, HAS WITNESSED OR OTHERWISE REFERENCED THEIR LOCATION.
2. ALL SAW CUTS NECESSARY TO COMPLETE THE WORK DETAILED IN THESE PLANS SHALL BE INCLUDED IN THE COST FOR THE VARIOUS PAY ITEMS INVOLVED.
3. IN ADDITION TO FIELD SURVEYS, PLAN DIMENSIONS AND DETAILS RELATIVE TO THE EXISTING FACILITIES HAVE BEEN TAKEN FROM EXISTING PLANS AND ARE SUBJECT TO CONSTRUCTION VARIATIONS AND FIELD CONDITIONS. IT SHALL BE THE RESPONSIBILITY OF THE CONTRACTOR TO VERIFY SUCH DIMENSIONS AND DETAILS IN THE FIELD. SUCH VARIATIONS SHALL NOT BE CAUSE FOR ADDITIONAL COMPENSATION DUE TO A CHANGE IN THE SCOPE OF WORK. HOWEVER, THE CONTRACTOR WILL BE PAID FOR QUANTITIES ACTUALLY FURNISHED AND PLACED AT THE CONTRACT UNIT BID PRICE FOR THE WORK.
4. ANY EXISTING ROAD SIGNS THAT INTERFERE WITH CONSTRUCTION WILL BE REMOVED OR RELOCATED AS DIRECTED BY THE ENGINEER. AFTER THE CONSTRUCTION IS COMPLETED, THE CONTRACTOR WILL REPLACE THE SIGNS AS DIRECTED BY THE ENGINEER. THIS WORK WILL NOT BE PAID SEPARATELY BUT SHALL BE CONSIDERED INCIDENTAL TO THE CONTRACT AND NO COMPENSATION WILL BE ALLOWED.
5. ANY REFERENCE TO A STANDARD IN THESE PLANS SHALL BE INTERPRETED TO MEAN THE EDITION AS INDICATED BY THE SUB-NUMBER LISTED ON THE INDEX OF SHEETS OR THE COPY OF THE STANDARD INCLUDED IN THESE PLANS.
6. THE CONTRACTOR SHALL BE RESPONSIBLE FOR ANY DAMAGE OR DESTRUCTION OF PUBLIC OR PRIVATE PROPERTY IN ACCORDANCE WITH THE SPECIAL PROVISIONS AND ARTICLE 107.20 OF THE "STANDARD SPECIFICATION", AND SHALL RESTORE SUCH PROPERTY AT HIS OWN EXPENSE.
7. ACCESS TO ALL ENTRANCES AND SIDE ROADS SHALL BE MAINTAINED AT ALL TIMES.
8. THE LOCATIONS OF THOSE BURIED AND ABOVE GROUND UTILITIES SHOWN ARE APPROXIMATE. THE CONTRACTOR SHALL BE RESPONSIBLE FOR PROTECTING UTILITY PROPERTY FROM CONSTRUCTION OPERATIONS AS OUTLINED IN ARTICLE 107.26 OF THE STANDARD SPECIFICATIONS. THE J.U.L.I.E. NUMBER IS 800-892-0123. A MINIMUM OF FORTY-EIGHT HOURS ADVANCED NOTICE IS REQUIRED.
9. IF THE CONTRACTOR REQUESTS OLD PLANS, THEY SHALL CONTACT THE PROJECT ENGINEER OR TEAM ENGINEER AS SHOWN ON THE COVER SHEET TO HAVE THEM AVAILABLE FOR REVIEW.
10. ALL OF THE DISTURBED AREAS WITHIN THE RIGHT OF WAY NOT COVERED BY SURFACING MATERIAL SHALL BE SEEDED.
11. SEEDING SHALL BE DONE ON ALL AREAS THAT ARE DISTURBED BY CONSTRUCTION OPERATIONS AS DIRECTED BY THE RESIDENT ENGINEER. SEEDING SHALL BE PAID FOR ONLY WITHIN THE EXISTING RIGHT-OF-WAY. ALL AREAS DISTURBED BY THE CONTRACTOR OUTSIDE OF THESE LIMITS SHALL BE SEEDED, AS DIRECTED BY THE RESIDENT ENGINEER, AT THE CONTRACTOR'S EXPENSE. SEEDING WILL NOT BE PERMITTED AT ANY TIME WHEN THE GROUND IS FROZEN, WET, OR IN AN UNTILLABLE CONDITIONS.
12. INCIDENTAL HMA SURFACING HAS BEEN PROVIDED AS A METHOD TO REPAIR DAMAGED HMA PAVEMENT DUE TO REMOVAL OPERATIONS. ALL REPAIR AREAS SHALL BE "SQUARED UP" WITH A VERTICAL SAW CUT AROUND THE PERIMETER OF THE PATCH OR AS DIRECTED BY THE ENGINEER. ALSO, A BITUMINOUS MATERIAL TACK COAT SHALL BE APPLIED TO ALL PAVEMENT REPAIR AREAS AT A RATE OF 0.05 LB/50 FT PRIOR TO THE INSTALLATION OF INCIDENTAL HMA SURFACING. THIS ADDITIONAL WORK SHALL BE CONSIDERED INCIDENTAL TO THE INCIDENTAL HMA SURFACING.

MIX REQUIREMENTS	
MIX USE:	INCIDENTAL HMA
PG:	PG 64-22
DESIGN AIR VOIDS:	4.0% @ N50
MIX COMPOSITION:	IL - 9.5
FRICTION AGGREGATE:	N/A
QUALITY MANAGEMENT:	QC/QA
SUBJECT SIZE:	N/A

**DISTRICT SIX**

EXAMINED November 29 20 16

*Sha C. Williams*

OPERATIONS ENGINEER

EXAMINED November 30 20 16

*Ron Buchanan*

PROJECT IMPLEMENTATION ENGINEER

EXAMINED December 1 20 16

*Jeff P. May*

PROGRAM DEVELOPMENT ENGINEER

**STATE OF ILLINOIS  
DEPARTMENT OF TRANSPORTATION**

GENERAL NOTES

FILE NAME *	USER NAME * kelley,b	DESIGNED -	REVISED -	STATE OF ILLINOIS DEPARTMENT OF TRANSPORTATION	GENERAL NOTES	F.A.P. RTE.	SECTION	COUNTY	TOTAL SHEETS	SHEET NO.	
p:\11894E81DINTEC\Illinois\go-p\100T\Documents\100T Offices\District Six\Projects\0672\Drawings\0672\10-shr\anno		CHECKED -	REVISED -			604	D6 MACOUPIN CO. ADA	MACOUPIN	33	2	
Default		DATE -	REVISED -			CONTRACT NO. 72J13		ILLINOIS FED. AID PROJECT			
						SCALE:	SHEET OF SHEETS	STA. TO STA.			

PPS# 6-00784-0000

CONSTR. CODE

STP  
80%-20%  
ROADWAY  
0021  
RURAL

CODE NO.	ITEM	UNIT	TOTAL QUANTITY	RURAL
20200100	EARTH EXCAVATION	CU YD	50	50
25000100	SEEDING, CLASS 1	ACRE	0.25	0.25
25000400	NITROGEN FERTILIZER NUTRIENT	POUND	23	23
25000500	PHOSPHORUS FERTILIZER NUTRIENT	POUND	23	23
25000600	POTASSIUM FERTILIZER NUTRIENT	POUND	23	23
25100115	MULCH, METHOD 2	ACRE	0.25	0.25
31101200	SUBBASE GRANULAR MATERIAL, TYPE B 4"	SQ YD	86	86
40800050	INCIDENTAL HOT-MIX ASPHALT SURFACING	TON	5	5
42400100	PORTLAND CEMENT CONCRETE SIDEWALK 4 INCH	SQ FT	4116.5	4116.5
42400800	DETECTABLE WARNINGS	SQ FT	408	408
44000100	PAVEMENT REMOVAL	SQ YD	30	30
44000500	COMBINATION CURB AND GUTTER REMOVAL	FOOT	204	204
44000600	SIDEWALK REMOVAL	SQ FT	3226	3226
44213200	SAW CUTS	FOOT	16	16

14

PPS# 6-00784-0000

CONSTR. CODE

STP  
80%-20%  
ROADWAY  
0021  
RURAL

CODE NO.	ITEM	UNIT	TOTAL QUANTITY	RURAL
50102400	CONCRETE REMOVAL	CU YD	1	1
50105220	PIPE CULVERT REMOVAL	FOOT	51	51
50800105	REINFORCEMENT BARS	POUND	40	40
54001001	BOX CULVERT END SECTIONS, CULVERT NO. 1	EACH	1	1
54002020	EXPANSION BOLTS 3/4 INCH	EACH	19	19
54010302	PRECAST CONCRETE BOX CULVERTS 3' X 2'	FOOT	20	20
54200220	PIPE CULVERTS, CLASS D, TYPE 1 15"	FOOT	10	10
54200229	PIPE CULVERTS, CLASS D, TYPE 1 24"	FOOT	32	32
54213657	PRECAST REINFORCED CONCRETE FLARED END SECTIONS 12"	EACH	1	1
54215559	METAL END SECTIONS 24"	EACH	1	1
54248510	CONCRETE COLLAR	CU YD	0.8	0.8
60260500	INLETS TO BE ADJUSTED WITH NEW TYPE 3 FRAME AND GRATE	EACH	3	3
60261200	INLETS TO BE ADJUSTED WITH NEW TYPE 10 FRAME AND GRATE	EACH	1	1
60265700	VALVE VAULTS TO BE ADJUSTED	EACH	1	1

14

STATE OF ILLINOIS  
DEPARTMENT OF TRANSPORTATION

FAP 604 (IL 159)  
SUMMARY OF QUANTITIES

FILE NAME :	USER NAME : kellyjb	DESIGNED -	REVISED -
p:\11\04\EBID\INTEG\Illinois.gov\PWIDOT\Documents\1007 Offices\District 6\Projects\0672\DRAWING\DATA\G40\Sheets\0672J13-sht-500.dwg		CHECKED -	REVISED -
		DATE -	REVISED -
Default	PLOT DATE : 2/3/2017		

SCALE: SHEET OF SHEETS STA. TO STA.

F.A.P. RTE.	SECTION	COUNTY	TOTAL SHEETS	SHEET NO.
604	D6 MACOUPIN CO. ADA	MACOUPIN	33	3
CONTRACT NO.			72J13	
ILLINOIS FED. AID PROJECT				



SIDEWALK SCHEDULE													
		44000600	44000100	42400100	X1700011	42400800	44000500	60604400	31101200	20200100	60265700	X0350810	44213200
		SIDEWALK REMOVAL	PAVEMENT REMOVAL	PCC SIDEWALK 4"	STAMPED COLORED PCC MEDIAN SURFACE 4'	DETECTABLE WARNINGS	COMBINATION CURB AND GUTTER REMOVAL	COMBINATION CONCRETE CURB AND GUTTER, TYPE B-6.18	SUB-BASE GRAN. MAT., TYPE B 4"	EARTH EXCAVATION	VALVE VAULTS TO BE ADJUSTED	BOLLARD REMOVAL	SAW CUTS
LOCATION	QUADRANT	( SQ FT)	( SQ YD)	( SQ FT)	( SQ FT)	( SQ FT)	( FT)	( FT)	( SQ YD)	( CU YD)	( EACH)	( EACH)	( FOOT)
ORANGE ST.	NW	44.9		49.3		8.0							
ORANGE ST.	NE	46.8		59.4		8.0							
ORANGE ST.	SW	139.1		189.0		16.0							
ORANGE ST.	SE	43.5		80.5		16.0							
BROOKLINE ST.	NW	135.0		175.9		16.0							
BROOKLINE ST.	NE	153.2		160.4		16.0							
BROOKLINE ST.	SW	31.9		45.8		8.0							
BROOKLINE ST.	SE	23.0		25.2		8.0							
PARK ST.	NW	21.7		41.4		8.0							
PARK ST.	NE	17.9		42.4		10.0							
PARK ST.	SW	213.9	1.2	234.2		16.0		1.2					
PARK ST.	SE	72.0		177.5		16.0							
HAMILTON ST.	NW	0.0		72.4		8.0							
HAMILTON ST.	NE	20.7		0.0		0.0							16
HAMILTON ST.	SW	40.1		57.9		16.0							
HAMILTON ST.	SE	16.0		174.5		16.0							
WARREN ST.	NW	238.6		195.0	45.0	20.0	37.3	37.3	12.8				
WARREN ST.	NE	308.4	21.1	427.6	38.6	20.0	42.7	57.8	21.1		1	2	
WARREN ST.	SW	367.2		347.3	18.1	28.5	51.0	51.0	17.5				
WARREN ST.	SE	62.0		62.0		16.0							
FAYETTE ST.	NW	34.2	2.0	52.5		8.0			2.0				
FAYETTE ST.	NE	36.1	2.0	51.6		8.0			2.0				
FAYETTE ST.	SW	325.7		303.5	26.0	21.5	39.2	39.2	13.4				
FAYETTE ST.	SE	206.3	3.0	278.7	17.6	20.0	33.4	45.5	15.6				
WILBUR ST.	NE	36.1		43.7		8.0							
WILBUR ST.	SW	139.4		149.5		8.0				13.2			
WILBUR ST.	SE	38.3		53.9		8.0							
E. MORGAN ST.	NE	28.6		45.1		8.0							
E. MORGAN ST.	SE	176.1		234.9		8.0				24.4			
W. MORGAN ST.	NW	37.4		45.2		8.0							
W. MORGAN ST.	SW	18.2		38.6		8.0							
PLEASANT ST.	NW	45.6		63.4		8.0							
PLEASANT ST.	SW	69.7		98.1		8.0				8.0			
NEW LAKE RD.	SW	37.7		40.1		8.0							
TOTAL		3225.3	29.3	4116.5	145.3	408.0	203.6	230.8	85.6	45.6	1	2	16

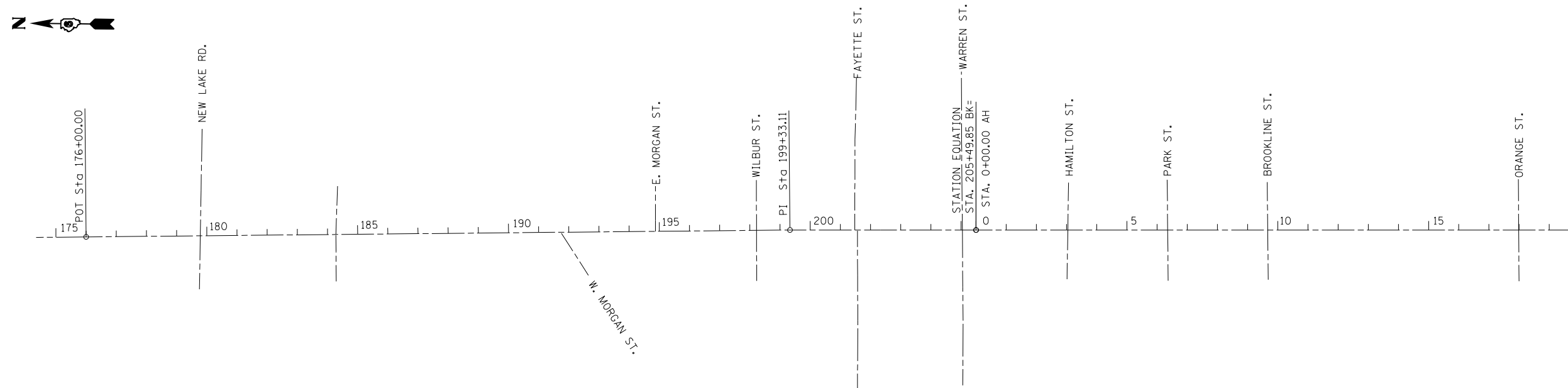
DRAINAGE SCHEDULE																
STATION	OFFSET (FT)	54213657 PRECAST CONCRETE FLARED END SECTIONS, 12" (EACH)	60260500 INLETS TO BE ADJ. WITH NEW TY. 3 FRAME & GRATE (EACH)	60261200 INLETS TO BE ADJ. WITH NEW TY. 10 FRAME & GRATE (EACH)	50105220 PIPE CULVERT REMOVAL (FT)	50102400 CONCRETE REMOVAL (CU YD)	54010302 PRECAST BOX CULVERT 3' x 2' (FT)	54001001 BOX CULVERT END SECTION NO. 1 (EACH)	X6023200 INLETS TY. A SPECIAL (EACH)	60402210 GRATES, TYPE 8 (EACH)	542D0220 PIPE CL. D, TY. 1 15" (FT)	542D0229 PIPE CL. D, TY. 1 24" (FT)	54215559 METAL END SECTIONS, 24" (EACH)	54248510 CONCRETE COLLAR (CU YD)	50800105 REINFORCEMENT BARS (POUND)	54002020 EXPANSION BOLTS, 3/4" (EACH)
17+81.72	44.5 RT	1														
205+45.25	52.1 RT			1												
204+63.54	38.6 LT		1													
201+80.32	39.4 RT		1													
201+78.80	37.4 LT		1													
184+86.20	25.5 RT				28.0						32.0	1	0.22			8
184+53.59	25.8 RT				13.0	1.0	20.0						0.37	35.5		7
184+53.21	28.4 RT							1	1							
184+50.76	45.3 RT							1								
184+40.87	31.1 RT				10.0						10.0		0.14			4
TOTAL		1	3	1	51.0	1.0	20.0	1	1	1	10.0	32.0	1	0.73	35.5	19

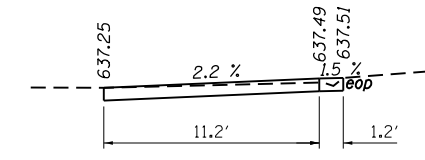
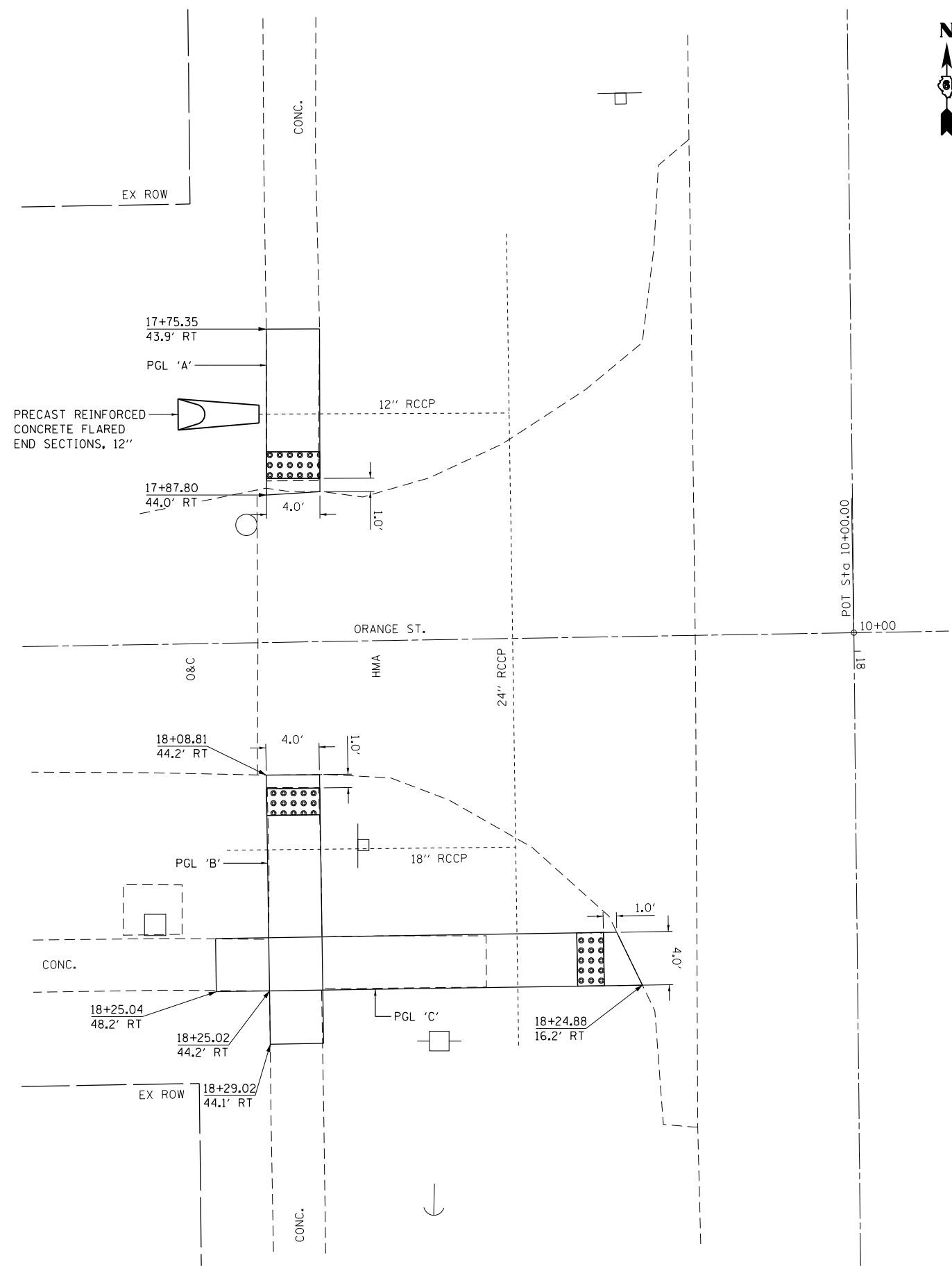
SEEDING SCHEDULE						
FAP 604 IL 159 BUNKER HILL		25000100	25000400	25000500	25000600	25100115
LOCATION	QUADRANT	SEEDING, CLASS 1 (ACRE)	NITROGEN FERTILIZER NUTRIENT (POUND)	PHOSPHORUS FERTILIZER NUTRIENT (POUND)	POTASSIUM FERTILIZER NUTRIENT (POUND)	MULCH, METHOD 2 (ACRE)
ORANGE ST.	NW	0.008	0.72	0.72	0.72	0.008
ORANGE ST.	NE	0.008	0.72	0.72	0.72	0.008
ORANGE ST.	SW	0.008	0.72	0.72	0.72	0.008
ORANGE ST.	SE	0.008	0.72	0.72	0.72	0.008
BROOKLINE ST.	NW	0.008	0.72	0.72	0.72	0.008
BROOKLINE ST.	NE	0.008	0.72	0.72	0.72	0.008
BROOKLINE ST.	SW	0.008	0.72	0.72	0.72	0.008
BROOKLINE ST.	SE	0.008	0.72	0.72	0.72	0.008
PARK ST.	NW	0.008	0.72	0.72	0.72	0.008
PARK ST.	NE	0.008	0.72	0.72	0.72	0.008
PARK ST.	SW	0.008	0.72	0.72	0.72	0.008
PARK ST.	SE	0.000	0	0	0	0.000
HAMILTON ST.	NW	0.009	0.81	0.81	0.81	0.009
HAMILTON ST.	NE	0.009	0.81	0.81	0.81	0.009
HAMILTON ST.	SW	0.013	1.17	1.17	1.17	0.013
HAMILTON ST.	SE	0.013	1.17	1.17	1.17	0.013
WARREN ST.	NW	0.000	0	0	0	0.000
WARREN ST.	NE	0.000	0	0	0	0.000
WARREN ST.	SW	0.000	0	0	0	0.000
WARREN ST.	SE	0.000	0	0	0	0.000
FAYETTE ST.	NW	0.000	0	0	0	0.000
FAYETTE ST.	NE	0.000	0	0	0	0.000
FAYETTE ST.	SW	0.000	0	0	0	0.000
FAYETTE ST.	SE	0.015	1.35	1.35	1.35	0.015
WILBUR ST.	NE	0.008	0.72	0.72	0.72	0.008
WILBUR ST.	SW	0.015	1.35	1.35	1.35	0.015
WILBUR ST.	SE	0.008	0.72	0.72	0.72	0.008
MORGAN ST.	NW	0.008	0.72	0.72	0.72	0.008
MORGAN ST.	NE	0.008	0.72	0.72	0.72	0.008
MORGAN ST.	SW	0.008	0.72	0.72	0.72	0.008
MORGAN ST.	SE	0.015	1.35	1.35	1.35	0.015
PLEASANT ST.	NW	0.008	0.72	0.72	0.72	0.008
PLEASANT ST.	SW	0.015	1.35	1.35	1.35	0.015
NEW LAKE RD.	SW	0.008	0.72	0.72	0.72	0.008
TOTAL		0.25	22.3	22.3	22.3	0.25

PAVEMENT MARKING SCHEDULE				
FAP 604 IL 159 BUNKER HILL		X0327980	78000400	78000600
LOCATION	QUADRANT	PAVEMENT MARKING REMOVAL WATERBLASTING (SQ FT)	THERMOPLASTIC PAVEMENT MARKING LINE, 6" (FOOT)	THERMOPLASTIC PAVEMENT MARKING LINE, 12" (FOOT)
FAYETTE ST.	NW	0	40	35
FAYETTE ST.	NE & SE	42	114	20
TOTAL		42	154	55

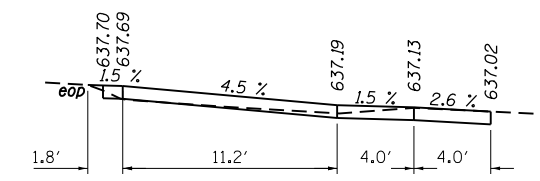
BENCHMARK INFORMATION	ELEVATION	LOCATION
<b>BM-38B</b> NORTH-NORTHWESTERLY BONNET BOLT OF FIRE HYDRANT, 48' EAST OF CENTERLINE RTE. 159 AND 0.22 MILES NORTH OF NEW LAKE ROAD AT RTE. 159 MILE MARKER 4.00	650.762	N 39°03'12" W 89°57'05"
<b>BM-39B</b> RAILROAD SPIKE IN EAST SIDE OF UTILITY POLE (NO NUMBER) AT SOUTHWEST QUADRANT OF THE INTERSECTION OF RTE. 159 AND WEST PLEASANT STREET EAST, 24' WEST OF CENTERLINE RTE. 159, 30' SOUTH OF CENTERLINE WEST PLEASANT STREET EAST.	637.095	N 39°02'55" W 89°57'06"
<b>BM-40B</b> BRASS DISC ON TOP W. SIDE OF MARBLE LINCOLN MONUMENT AT INTERSECTION OF IL 159 AND FAYETTE ST.	668.013	STA. 201+58.30 1.5' RT
<b>BM RTB #2</b> TOP OF EXPOSED REBAR ON THE W. END OF HEADWALL ON THE W. SIDE IL 159, SW. QUAD IL 159 AND MORGAN ST.	642.876	STA. 192+23.55 26.4' RT
<b>BM 39B</b> FD RR SPIKE IN UTILITY POLE ON W. SIDE IL 159, SW QUAD OF IL 159 AND PLEASANT ST.	637.073	STA. 184+58.15 22.8' RT
<b>BM RTB #1</b> SET CHSLD SQUARE ON N. CORNER OF CONC HEADWALL ON THE E. SIDE IL 159, SE OF IL 159 AND NEW LAKE RD.	638.207	STA. 179+95.40 39.2' LT
<b>BM RTB #3</b> SET CHSLD 'X' ON SW BOLT OF FIRE HYDRANT AT THE NE QUAD IL 159 AND WARREN ST. AT SPANKY'S BAR.	667.658	STA. 204+67.20 59.15' LT
<b>BM RTB #4</b> SET CHSLD SQUARE N. HEADWALL ON THE E. SIDE IL 159, NE QUAD IL 159 AND BROOKLINE ST.	645.174	STA. 9+34.20 31.3' LT
<b>BM RTB #5</b> SET CHSLD 'X' ON THE SE BOLT OF E. SIGN POST (2X GAS STATION) ON W. SIDE IL 159.	636.102	STA. 21+49.70 52.4' RT
<b>BM RTB #6</b> FD RR SPIKE IN POWER POLE AT THE SW QUAD IL 159 AND ALTON ST.	637.968	STA. 27+50.60 55.2' RT
<b>PSM 2139</b> FD 3" ALUM DISC IN TOP CENTER OF W. CONC HEADWALL OF 6'W X 3'H BOX CULVERT ON W. SIDE IL 159, IN FRONT OF SUBWAY.	635.935	STA. 25+41.42 21.85' RT

ALIGNMENT	STATION	NORTHING	EASTING
E008	176+00.00	868,225.33	2,357,628.55
	199+33.11	865,892.71	2,357,676.31
	205+49.85	865,276.01	2,357,682.89

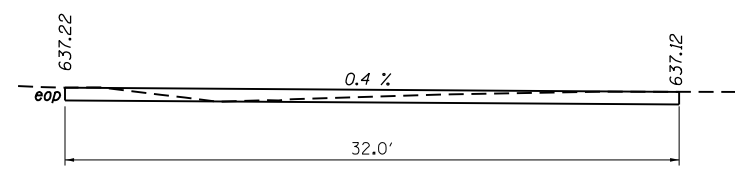




PROFILE 'A'



PROFILE 'B'



PROFILE 'C'

- NOTES:
1. MATCH PROPOSED CURB & GUTTER TO EXISTING CURB & GUTTER AT THE APPROXIMATE LOCATIONS SHOWN ON THE DRAWING. SAW CUT FULL-DEPTH FOR REMOVAL OF CURB AND GUTTER.
  2. MATCH PROPOSED SIDEWALK TO THE EXISTING SIDEWALK AT AN EXISTING JOINT. WHEN TRANSITIONING FROM A PROPOSED 4 FOOT (OR 5 FOOT) WIDTH TO EXISTING, USE A 10 FOOT TRANSITION LENGTH. SAW CUT FULL-DEPTH FOR REMOVAL OF SIDEWALK.
  3. SEE IDOT STD. 424001 FOR DETAILS OF PERPENDICULAR CURB RAMPS FOR SIDEWALKS.
  4. STATION & OFFSETS ARE FROM IL RTE. 159
  5. ELEVATIONS SHOWN ARE TO THE TOP OF SIDEWALK UNLESS OTHERWISE NOTED.
  6. THE CONTRACTOR SHALL VERIFY EXISTING FIELD CONDITIONS PRIOR TO THE CONSTRUCTION OF ANY RAMP OR SIDEWALK. ANY ADJUSTMENTS NECESSARY TO MEET EXISTING FIELD CONDITIONS SHALL BE APPROVED BY THE ENGINEER PRIOR TO CONSTRUCTION.

FILE NAME =	USER NAME = Verenskif	DESIGNED -	REVISED -
pw:\IL\084EBIDINTEG\illinois.gov\PIDOT\Documents\IDOT Offices\District 6\Projects\0672\Drawings\EA0\Drawings\0672\13-shd-plan-B.dwg		CHECKED -	REVISED -
Sheet File	PLOT DATE = 2/3/2017	DATE -	REVISED -

**STATE OF ILLINOIS  
DEPARTMENT OF TRANSPORTATION**

<b>IL 159 /ORANGE ST. PLAN SHEETS /SIDEWALK DETAILS</b>			
SCALE:	SHEET	OF SHEETS	STA. TO STA.

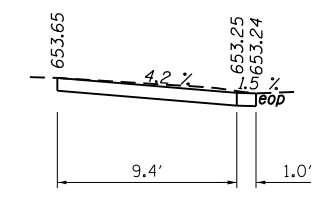
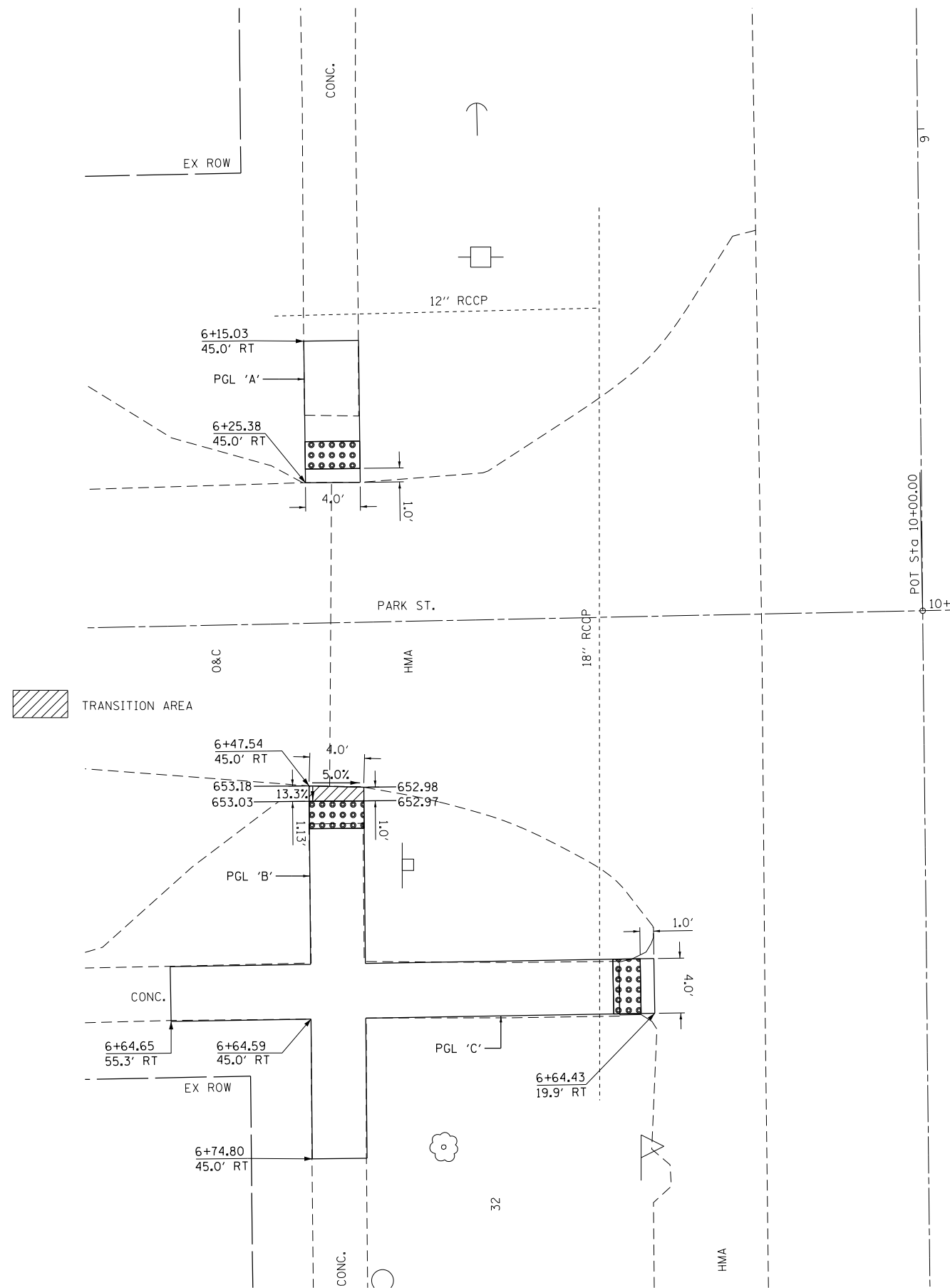
F.A.P. RTE.	SECTION	COUNTY	TOTAL SHEETS	SHEET NO.
604	D6 MACOUPIN CO. ADA	MACOUPIN	33	8
CONTRACT NO.			72J13	
ILLINOIS FED. AID PROJECT				



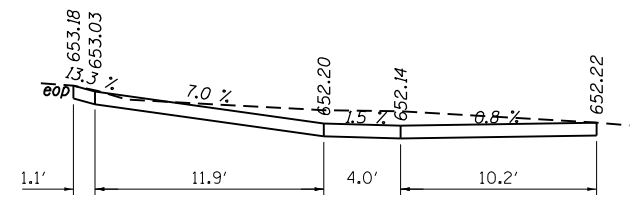




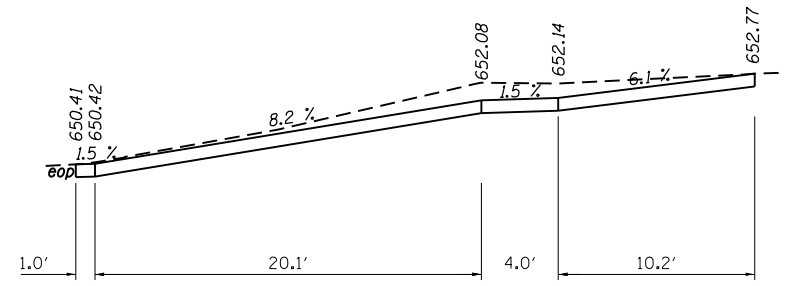




PROFILE 'A'



PROFILE 'B'



PROFILE 'C'

NOTES:

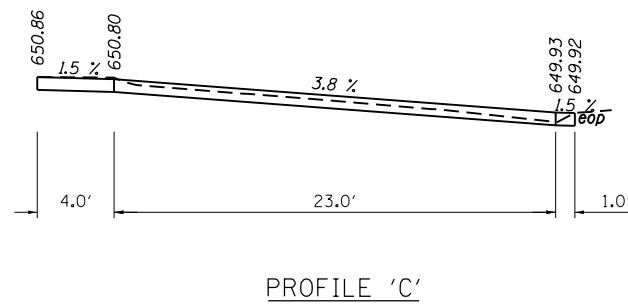
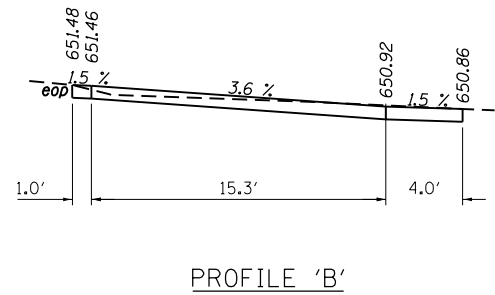
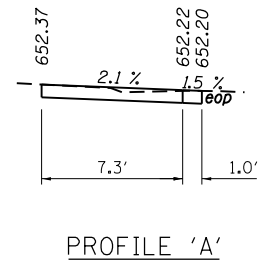
1. MATCH PROPOSED CURB & GUTTER TO EXISTING CURB & GUTTER AT THE APPROXIMATE LOCATIONS SHOWN ON THE DRAWING. SAW CUT FULL-DEPTH FOR REMOVAL OF CURB AND GUTTER.
2. MATCH PROPOSED SIDEWALK TO THE EXISTING SIDEWALK AT AN EXISTING JOINT. WHEN TRANSITIONING FROM A PROPOSED 4 FOOT (OR 5 FOOT) WIDTH TO EXISTING, USE A 10 FOOT TRANSITION LENGTH. SAW CUT FULL-DEPTH FOR REMOVAL OF SIDEWALK.
3. SEE IDOT STD. 424001 FOR DETAILS OF PERPENDICULAR CURB RAMPS FOR SIDEWALKS.
4. STATION & OFFSETS ARE FROM IL RTE. 159 CL
5. ELEVATIONS SHOWN ARE TO THE TOP OF SIDEWALK UNLESS OTHERWISE NOTED.
6. THE CONTRACTOR SHALL VERIFY EXISTING FIELD CONDITIONS PRIOR TO THE CONSTRUCTION OF ANY RAMP OR SIDEWALK. ANY ADJUSTMENTS NECESSARY TO MEET EXISTING FIELD CONDITIONS SHALL BE APPROVED BY THE ENGINEER PRIOR TO CONSTRUCTION.

FILE NAME =	USER NAME = Verenskif	DESIGNED -	REVISED -
pw:\IL084EBIDINTEG\illinois.gov\PWIDOT\Documents\IDOT Offices\District 6\Projects\0672\Drawings\EA0\Drawings\0672\13-shr-plan-B\067213-shr-plan-B.dwg		CHECKED -	REVISED -
Sheet File	PLOT DATE = 2/3/2017	DATE -	REVISED -

STATE OF ILLINOIS  
DEPARTMENT OF TRANSPORTATION

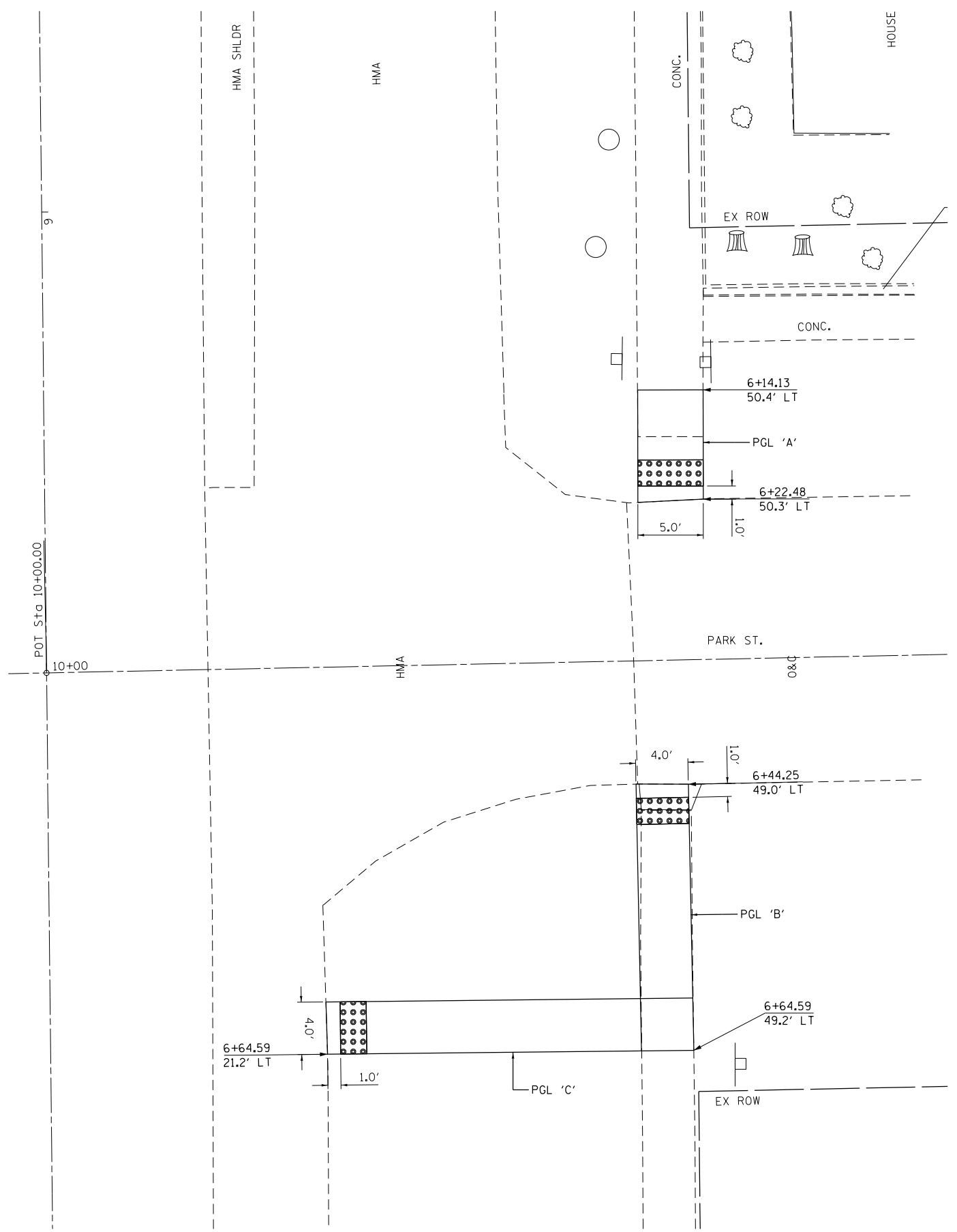
IL 159 /PARK ST.			
PLAN SHEETS /SIDEWALK DETAILS			
SCALE:	SHEET	OF SHEETS	STA. TO STA.

F.A.P. RTE.	SECTION	COUNTY	TOTAL SHEETS	SHEET NO.
604	D6 MACOUPIN CO. ADA	MACOUPIN	33	12
CONTRACT NO.			72J13	
ILLINOIS FED. AID PROJECT				



NOTES:

1. MATCH PROPOSED CURB & GUTTER TO EXISTING CURB & GUTTER AT THE APPROXIMATE LOCATIONS SHOWN ON THE DRAWING. SAW CUT FULL-DEPTH FOR REMOVAL OF CURB AND GUTTER.
2. MATCH PROPOSED SIDEWALK TO THE EXISTING SIDEWALK AT AN EXISTING JOINT. WHEN TRANSITIONING FROM A PROPOSED 4 FOOT (OR 5 FOOT) WIDTH TO EXISTING, USE A 10 FOOT TRANSITION LENGTH. SAW CUT FULL-DEPTH FOR REMOVAL OF SIDEWALK.
3. SEE IDOT STD. 424001 FOR DETAILS OF PERPENDICULAR CURB RAMP FOR SIDEWALKS.
4. STATION & OFFSETS ARE FROM IL RTE. 159 C
5. ELEVATIONS SHOWN ARE TO THE TOP OF SIDEWALK UNLESS OTHERWISE NOTED.
6. THE CONTRACTOR SHALL VERIFY EXISTING FIELD CONDITIONS PRIOR TO THE CONSTRUCTION OF ANY RAMP OR SIDEWALK. ANY ADJUSTMENTS NECESSARY TO MEET EXISTING FIELD CONDITIONS SHALL BE APPROVED BY THE ENGINEER PRIOR TO CONSTRUCTION.



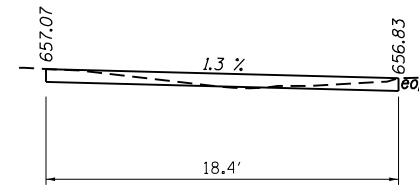
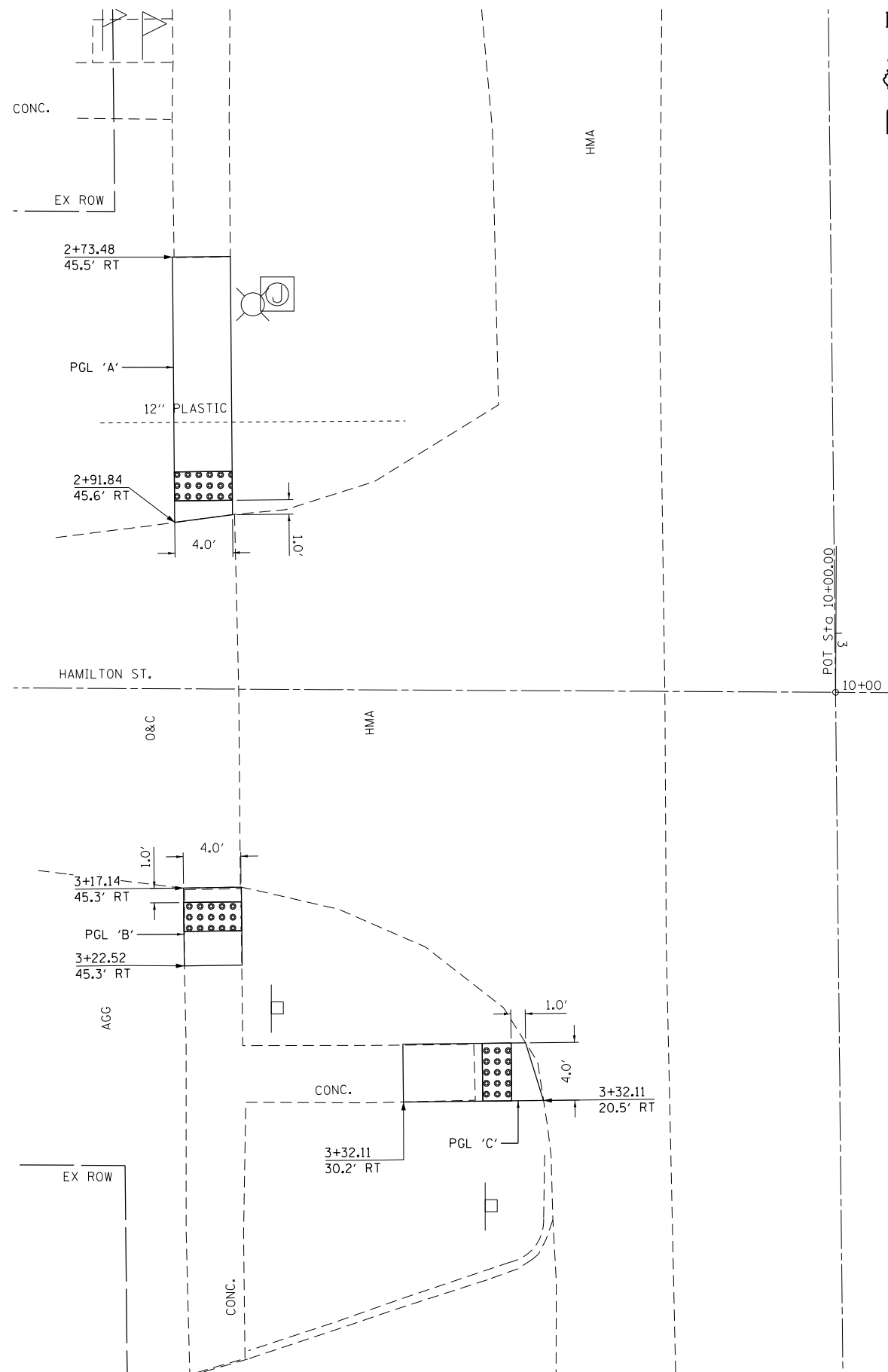
FILE NAME =	USER NAME = Verenskif	DESIGNED -	REVISED -
pw\11084EBIDINTEG\illinois.gov\PIDOT\Documents\IDOT Offices\District 6\Projects\0672\DRAWING\EA0\sheets\0672J13-sht-plan-B\REVISED.dgn		CHECKED -	REVISED -
Sheet File	PLOT DATE = 2/3/2017	DATE -	REVISED -

STATE OF ILLINOIS  
DEPARTMENT OF TRANSPORTATION

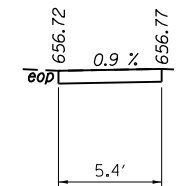
IL 159 /PARK ST.  
PLAN SHEETS /SIDEWALK DETAILS

SCALE: SHEET OF SHEETS STA. TO STA.

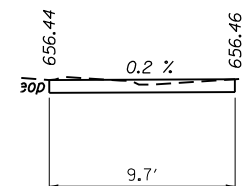
F.A.P. RTE.	SECTION	COUNTY	TOTAL SHEETS	SHEET NO.
604	D6 MACOUPIN CO. ADA	MACOUPIN	33	13
CONTRACT NO.			72J13	
ILLINOIS FED. AID PROJECT				



PROFILE 'A'



PROFILE 'B'



PROFILE 'C'

NOTES:

1. MATCH PROPOSED CURB & GUTTER TO EXISTING CURB & GUTTER AT THE APPROXIMATE LOCATIONS SHOWN ON THE DRAWING. SAW CUT FULL-DEPTH FOR REMOVAL OF CURB AND GUTTER.
2. MATCH PROPOSED SIDEWALK TO THE EXISTING SIDEWALK AT AN EXISTING JOINT. WHEN TRANSITIONING FROM A PROPOSED 4 FOOT (OR 5 FOOT) WIDTH TO EXISTING, USE A 10 FOOT TRANSITION LENGTH. SAW CUT FULL-DEPTH FOR REMOVAL OF SIDEWALK.
3. SEE IDOT STD. 424001 FOR DETAILS OF PERPENDICULAR CURB RAMPS FOR SIDEWALKS.
4. STATION & OFFSETS ARE FROM IL RTE. 159 C
5. ELEVATIONS SHOWN ARE TO THE TOP OF SIDEWALK UNLESS OTHERWISE NOTED.
6. THE CONTRACTOR SHALL VERIFY EXISTING FIELD CONDITIONS PRIOR TO THE CONSTRUCTION OF ANY RAMP OR SIDEWALK. ANY ADJUSTMENTS NECESSARY TO MEET EXISTING FIELD CONDITIONS SHALL BE APPROVED BY THE ENGINEER PRIOR TO CONSTRUCTION.

FILE NAME =	USER NAME = Verenskif	DESIGNED -	REVISED -
pw:\IL\084EBIDINTEG\illinois.gov\PIWIDOT\Documents\IDOT Offices\District 6\Projects\0672\DRAWING\EA0\Drawings\0672\13-shr-plan-B\067213-shr-plan-B.dwg		CHECKED -	REVISED -
Sheet File	PLOT DATE = 2/3/2017	DATE -	REVISED -

STATE OF ILLINOIS  
DEPARTMENT OF TRANSPORTATION

IL 159 / HAMILTON ST.  
PLAN SHEETS / SIDEWALK DETAILS

SCALE: SHEET OF SHEETS STA. TO STA.

F.A.P. RTE.	SECTION	COUNTY	TOTAL SHEETS	SHEET NO.
604	D6 MACOUPIN CO. ADA	MACOUPIN	33	14
CONTRACT NO.			72J13	
ILLINOIS FED. AID PROJECT				











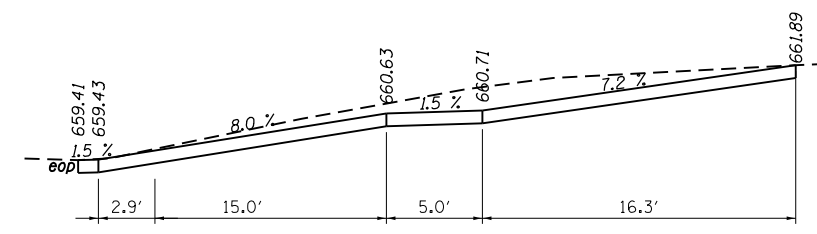
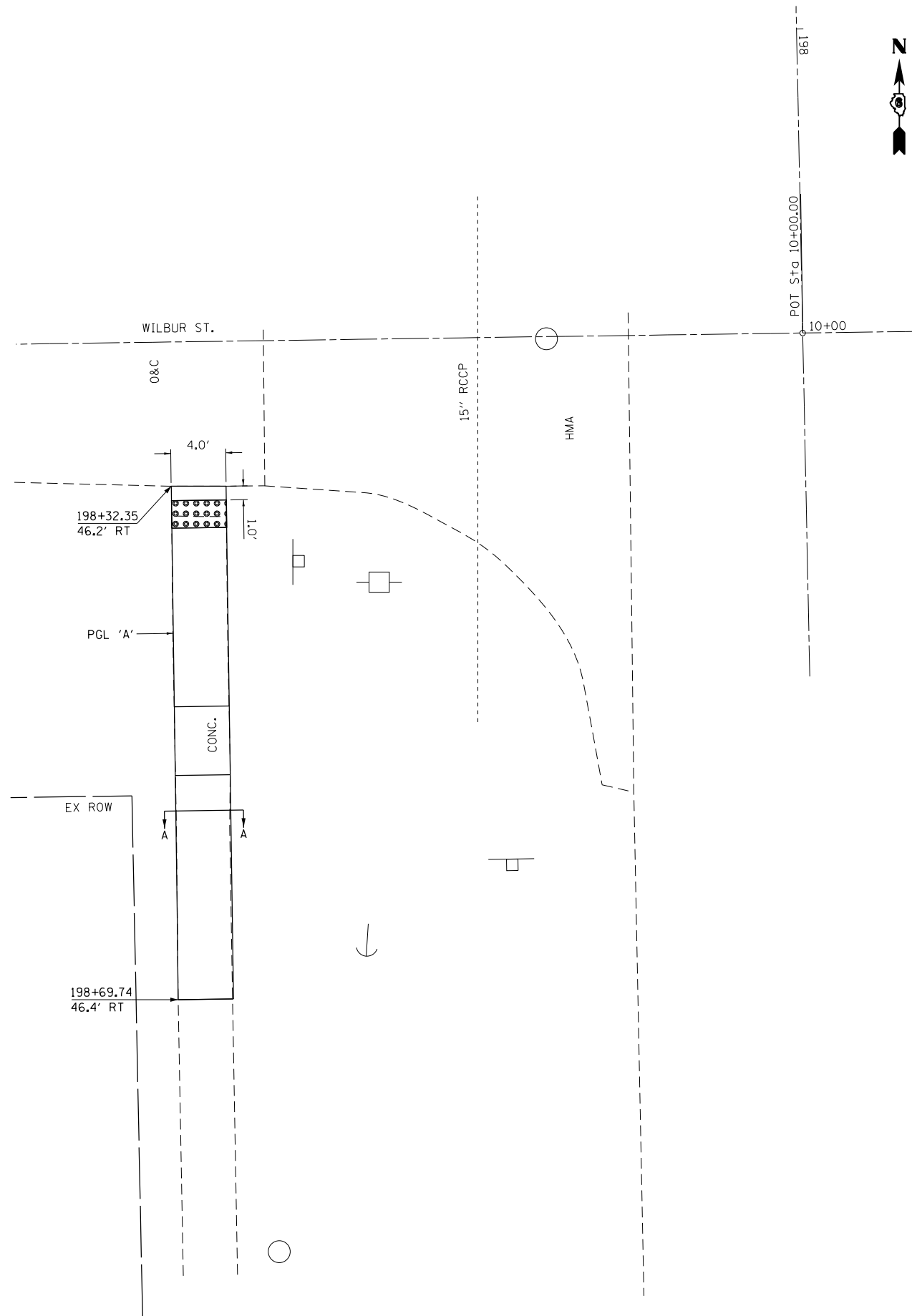




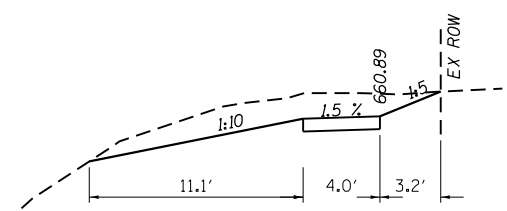








PROFILE 'A'



SECTION A-A

C.S.A. = 9.5 SQ. FT.  
 S.W. LENGTH = 37.4 FT.  
 EARTH EX. = 13.2 CU. YD.

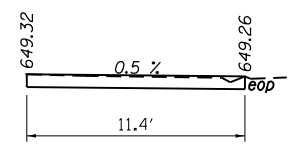
NOTES:

1. MATCH PROPOSED CURB & GUTTER TO EXISTING CURB & GUTTER AT THE APPROXIMATE LOCATIONS SHOWN ON THE DRAWING. SAW CUT FULL-DEPTH FOR REMOVAL OF CURB AND GUTTER.
2. MATCH PROPOSED SIDEWALK TO THE EXISTING SIDEWALK AT AN EXISTING JOINT. WHEN TRANSITIONING FROM A PROPOSED 4 FOOT (OR 5 FOOT) WIDTH TO EXISTING, USE A 10 FOOT TRANSITION LENGTH. SAW CUT FULL-DEPTH FOR REMOVAL OF SIDEWALK.
3. SEE IDOT STD. 424001 FOR DETAILS OF PERPENDICULAR CURB RAMPS FOR SIDEWALKS.
4. STATION & OFFSETS ARE FROM IL RTE. 159 CL
5. ELEVATIONS SHOWN ARE TO THE TOP OF SIDEWALK UNLESS OTHERWISE NOTED.
6. THE CONTRACTOR SHALL VERIFY EXISTING FIELD CONDITIONS PRIOR TO THE CONSTRUCTION OF ANY RAMP OR SIDEWALK. ANY ADJUSTMENTS NECESSARY TO MEET EXISTING FIELD CONDITIONS SHALL BE APPROVED BY THE ENGINEER PRIOR TO CONSTRUCTION.

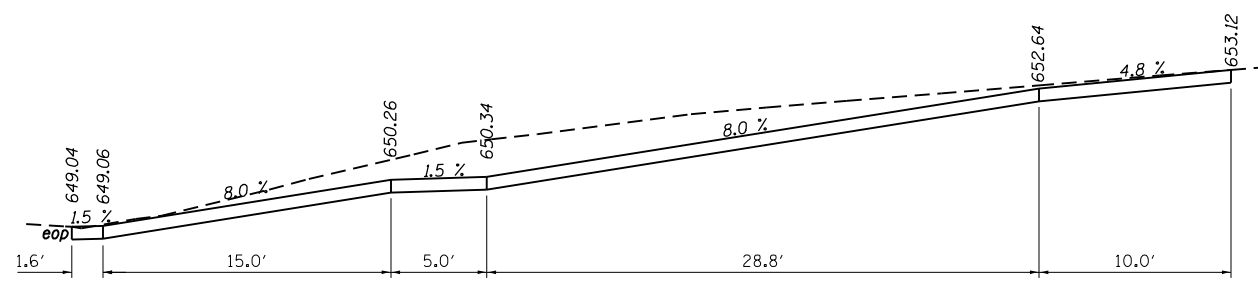
FILE NAME =	USER NAME = Verenskif	DESIGNED -	REVISED -	<b>STATE OF ILLINOIS DEPARTMENT OF TRANSPORTATION</b>	<b>IL 159 /WILBUR ST. PLAN SHEETS /SIDEWALK DETAILS</b>	F.A.P. RTE.	SECTION	COUNTY	TOTAL SHEETS	SHEET NO.
Sheet File	PLOT DATE = 2/3/2017	CHECKED -	REVISED -			604	D6 MACOUPIN CO. ADA	MACOUPIN	33	24
		DATE -	REVISED -			CONTRACT NO. 72J13		ILLINOIS FED. AID PROJECT		



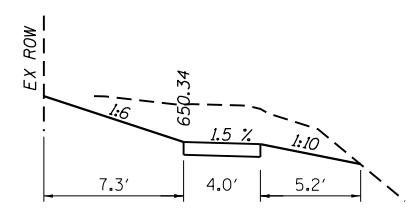




PROFILE 'A'



PROFILE 'B'

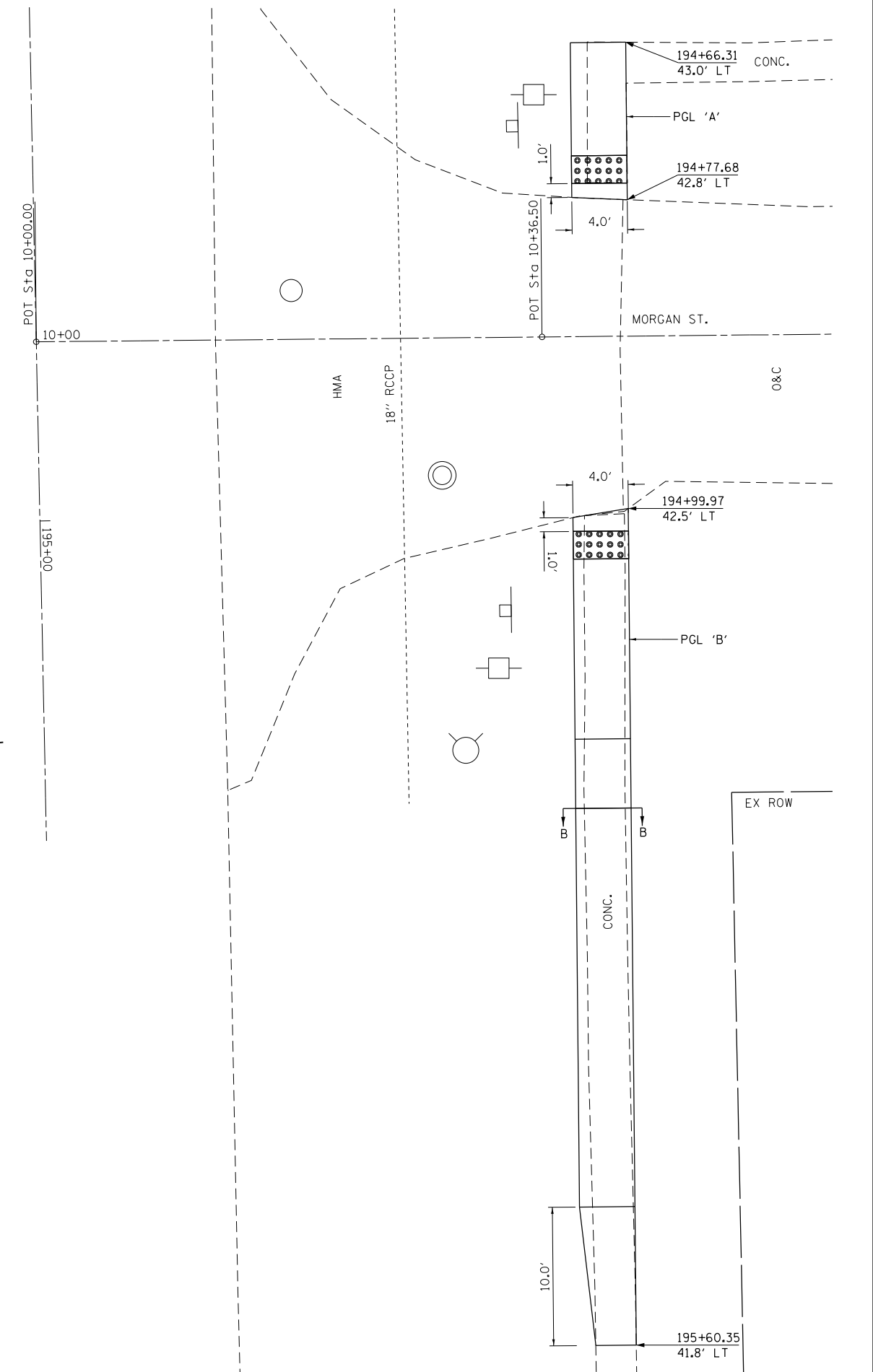


SECTION B-B

C.S.A. = 10.9 SQ. FT.  
 S.W. LENGTH = 60.4 FT.  
 EARTH EX. = 24.4 CU. YD.

NOTES:

1. MATCH PROPOSED CURB & GUTTER TO EXISTING CURB & GUTTER AT THE APPROXIMATE LOCATIONS SHOWN ON THE DRAWING. SAW CUT FULL-DEPTH FOR REMOVAL OF CURB AND GUTTER.
2. MATCH PROPOSED SIDEWALK TO THE EXISTING SIDEWALK AT AN EXISTING JOINT. WHEN TRANSITIONING FROM A PROPOSED 4 FOOT (OR 5 FOOT) WIDTH TO EXISTING, USE A 10 FOOT TRANSITION LENGTH. SAW CUT FULL-DEPTH FOR REMOVAL OF SIDEWALK.
3. SEE IDOT STD. 424001 FOR DETAILS OF PERPENDICULAR CURB RAMPS FOR SIDEWALKS.
4. STATION & OFFSETS ARE FROM IL RTE. 159 C
5. ELEVATIONS SHOWN ARE TO THE TOP OF SIDEWALK UNLESS OTHERWISE NOTED.
6. THE CONTRACTOR SHALL VERIFY EXISTING FIELD CONDITIONS PRIOR TO THE CONSTRUCTION OF ANY RAMP OR SIDEWALK. ANY ADJUSTMENTS NECESSARY TO MEET EXISTING FIELD CONDITIONS SHALL BE APPROVED BY THE ENGINEER PRIOR TO CONSTRUCTION.



FILE NAME =	USER NAME = Verenskif	DESIGNED -	REVISED -	<b>STATE OF ILLINOIS DEPARTMENT OF TRANSPORTATION</b>	<b>IL 159 /MORGAN ST. PLAN SHEETS /SIDEWALK DETAILS</b>				F.A.P. RTE.	SECTION	COUNTY	TOTAL SHEETS	SHEET NO.	
Sheet File		CHECKED -	REVISED -		SCALE:	SHEET	OF	SHEETS	STA.	TO STA.	604	D6 MACOUPIN CO. ADA	33	26
		DATE -	REVISED -						CONTRACT NO. 72J13					
									ILLINOIS FED. AID PROJECT					

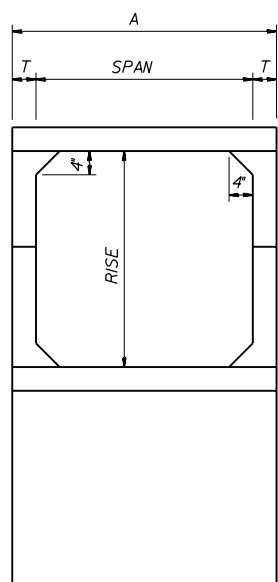
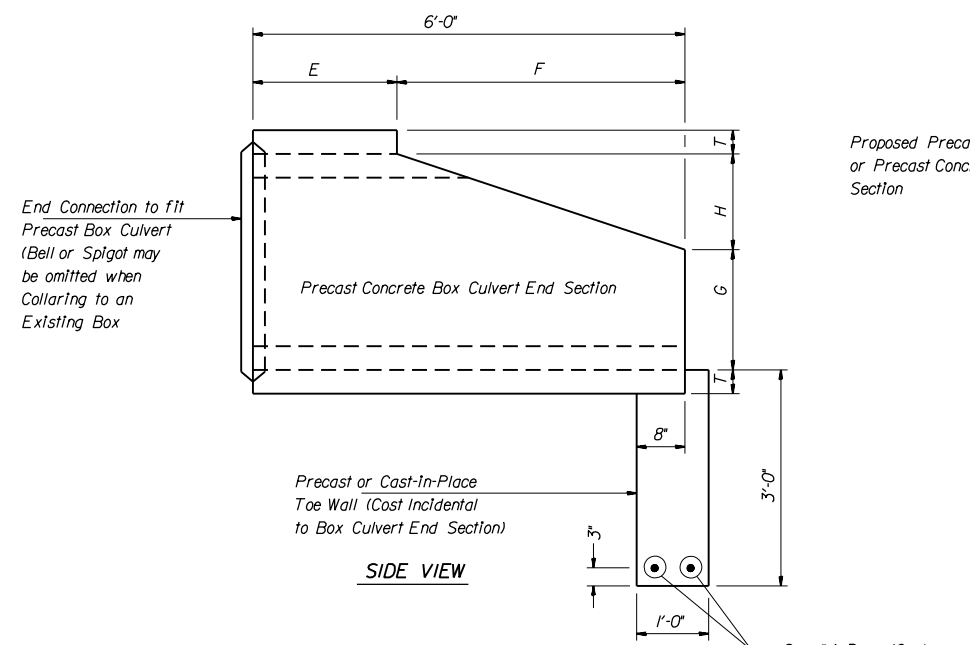




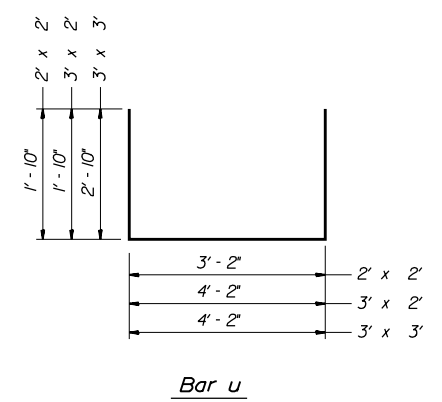
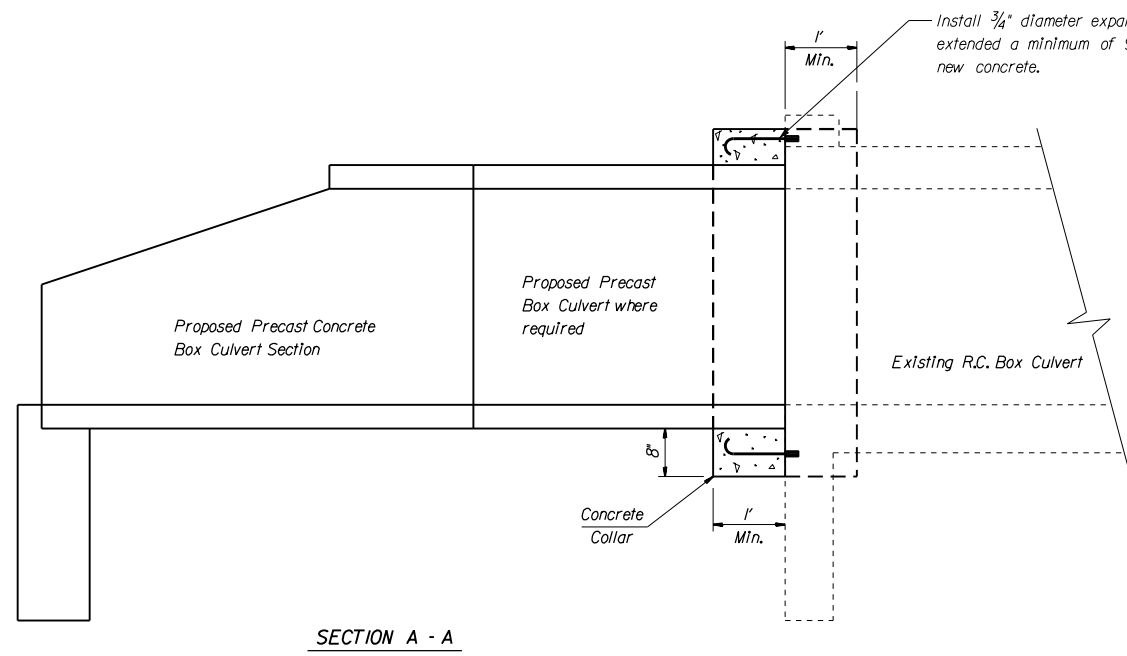
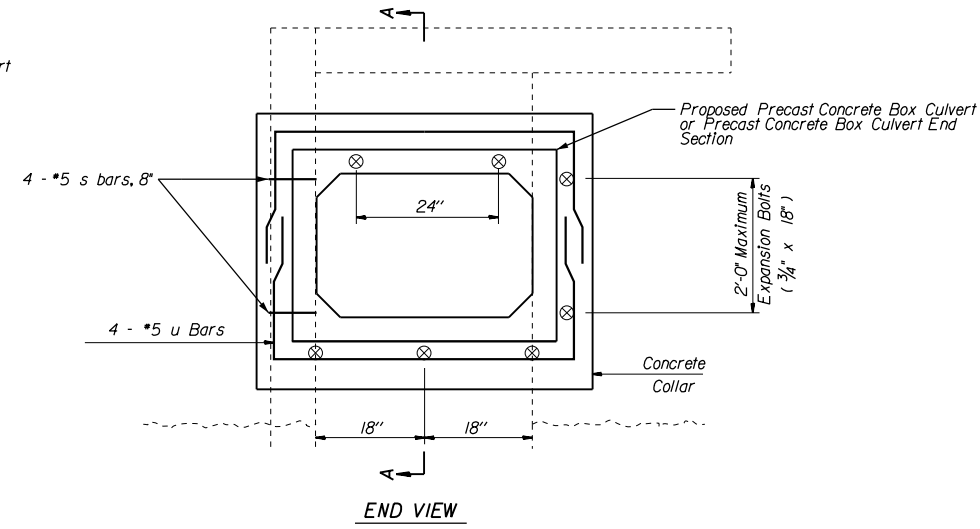
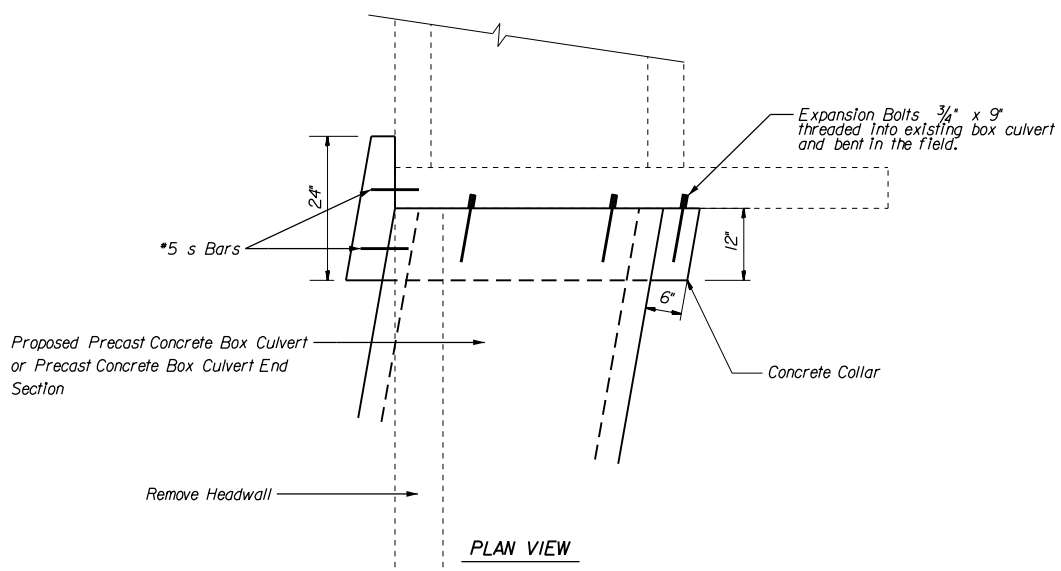




NOTE:  
Expansion Bolts shall consist of self drilling expansion shields and 3/4" diameter hooked bolts. Hooked bolts shall extend a minimum distance as specified, 9" or 18" into the new concrete. Minimum certified proof load = 4080 lbs.



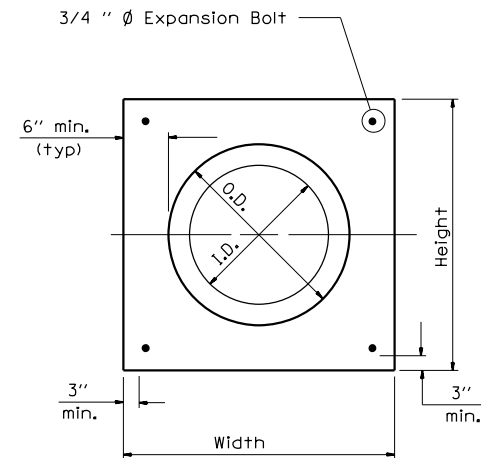
Span x Rise	T	A	E	F	G	H
2' x 2'	4"	2' - 8"	3' - 0"	3' - 0"	1' - 0"	1' - 0"
3' x 2'	4"	3' - 8"	3' - 0"	3' - 0"	1' - 0"	1' - 0"
3' x 3'	4"	3' - 8"	2' - 0"	4' - 0"	1' - 8"	1' - 4"



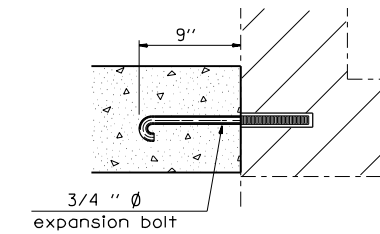
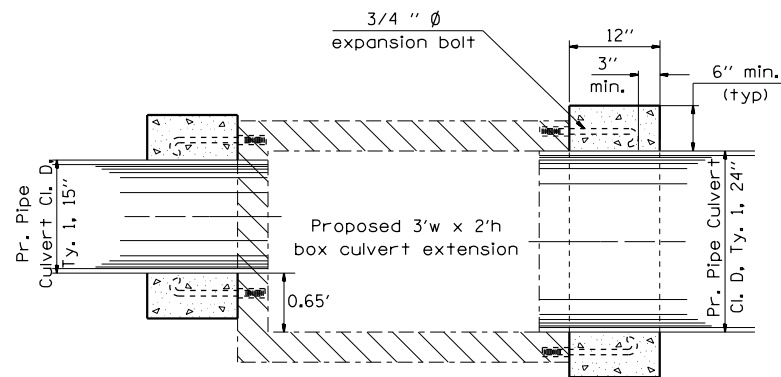
NOTE:  
Removal of existing headwalls, portions of existing top slabs shall be paid for at the contract unit price for Concrete Headwall Removal.  
\* The dimensions shown are the minimum extensions of the expansion bolts into the new concrete.

SCHEDULE OF ESTIMATED QUANTITIES

STATION	SIZE	CONCRETE HEADWALL REMOVAL	CONCRETE COLLAR	EXPANSION BOLTS	REINFORCEMENT BARS
	(FT)	(C. Y.)	(C. Y.)	(EA.)	(LBS)
184+53.60 RIGHT	3' X 2'	1.0	0.37	7	35.5



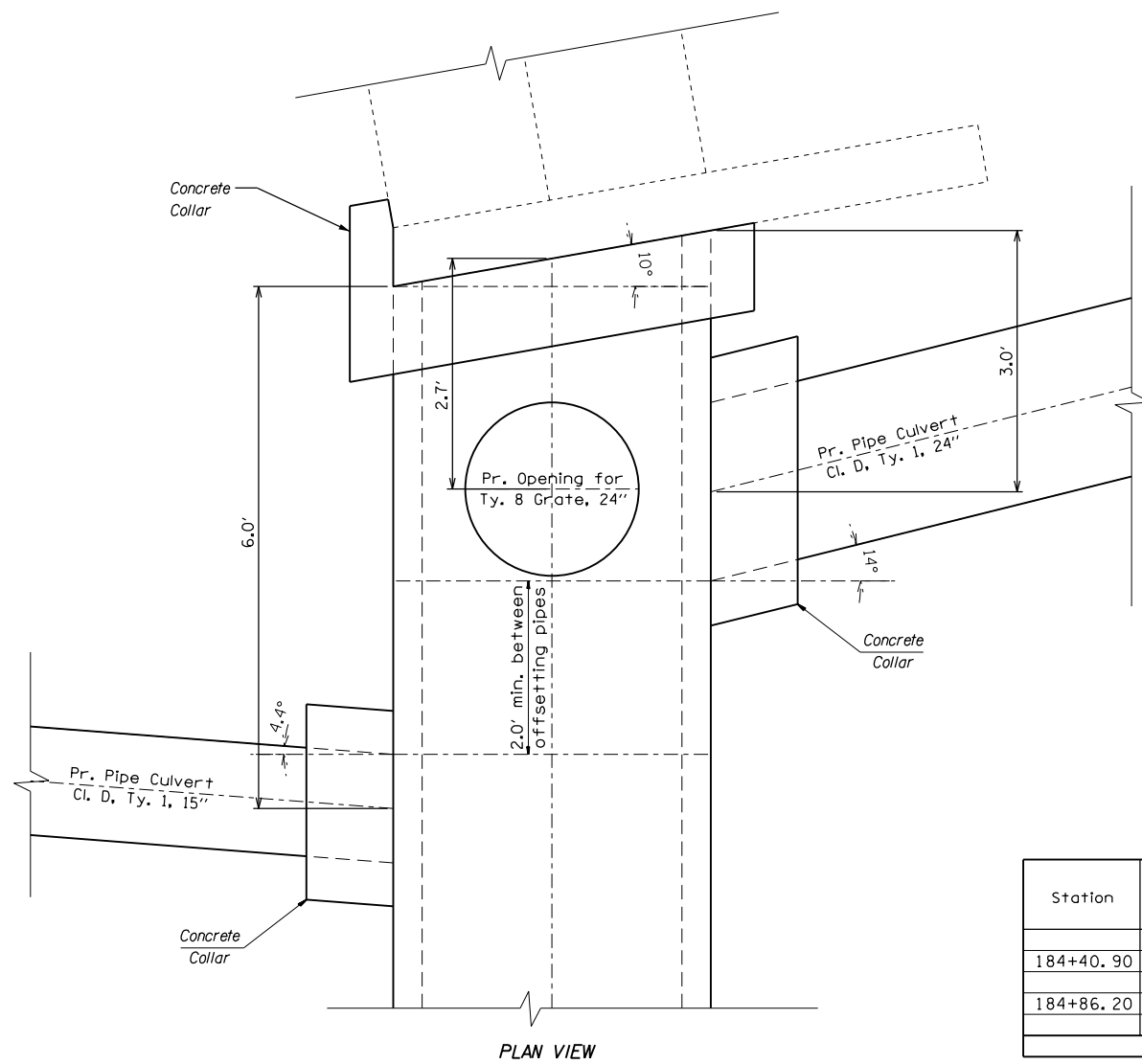
PIPE CULVERT COLLAR



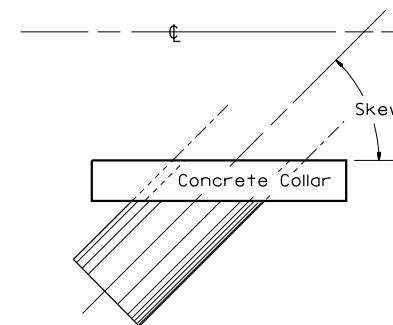
Expansion Bolt Detail

Notes:

- Expansion bolts shall consist of self drilling expansion shields and 3/4" Ø hooked bolts. Hooked bolts shall extend a minimum of 9" into new concrete. Minimum Certified Proof Load - 4,080 lbs.
- Use minimum of 1 (one) expansion bolt at each corner.

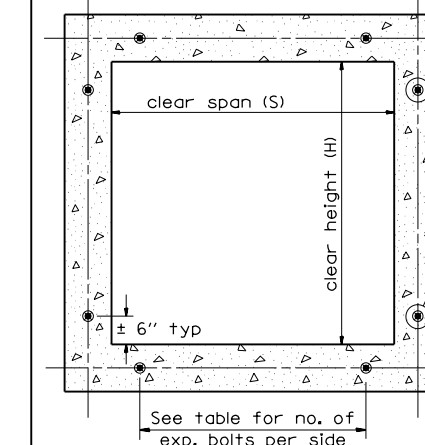


PLAN VIEW



Station	Section Type	Skew	Existing Culvert		Proposed Culvert		Collar		Expansion Bolts 3/4"	Class SI Concrete Collar
			Size	I.D.	O.D.	Height	Width	Each		
184+40.90			3' x 2'	15"	15"	27"	27"	4	0.14	
184+86.20			3' x 2'	24"	24"	36"	36"	8	0.22	
Total									12	0.36

BOX CULVERT POURED IN PLACE EXTENSION



Section Thru Barrel

EXPANSION BOLTS REQUIRED FOR CULVERT EXTENSIONS

H or S	No. Expansion Bolts Req'd. Per Side			
	Extension ≤ 15ft		Extension > 15ft	
	No.	Spacing	No.	Spacing
24"	*	*	*	*
30"	2	18"	2	18"
36"	2	24"	2	24"
48"	3	18"	3	18"
60"	4	16"	3	24"
72"	5	15"	4	20"
84"	5	18"	4	24"
96"	6	17"	5	21"
108"	6	19"	5	24"
120"	7	18"	6	21"
132"	8	17"	6	24"
144"	8	19"	7	22"

Note: Number of expansion bolts in table based on non-skewed culverts.

\* Use minimum 1 (one) expansion bolt in each corner.



