

STATE OF ILLINOIS
DEPARTMENT OF TRANSPORTATION
DIVISION OF HIGHWAYS
PROPOSED
HIGHWAY PLANS

F.A.S. RTE.	SECTION	COUNTY	TOTAL SHEETS	SHEET NO.
451	16-00144-00-PP	FULTON	4	1
		ILLINOIS	CONTRACT NO. 89711	

INDEX OF SHEETS

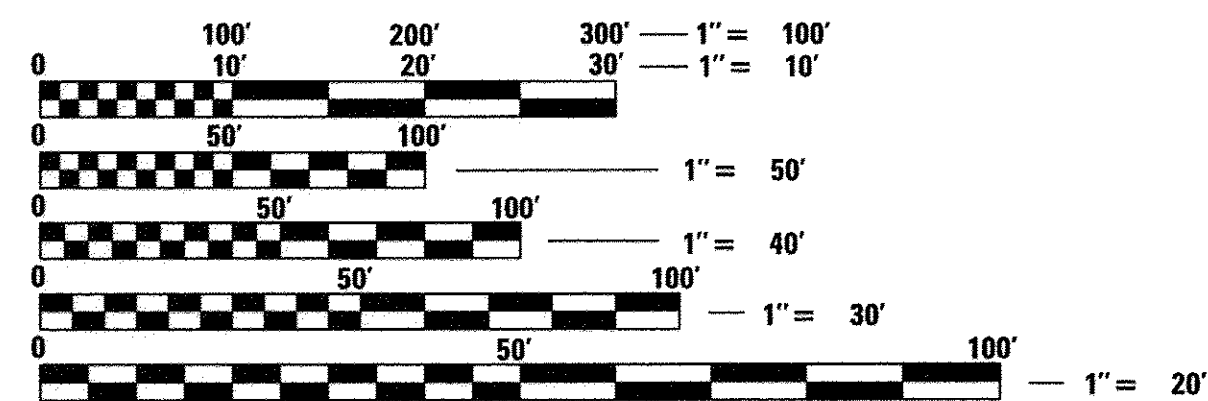
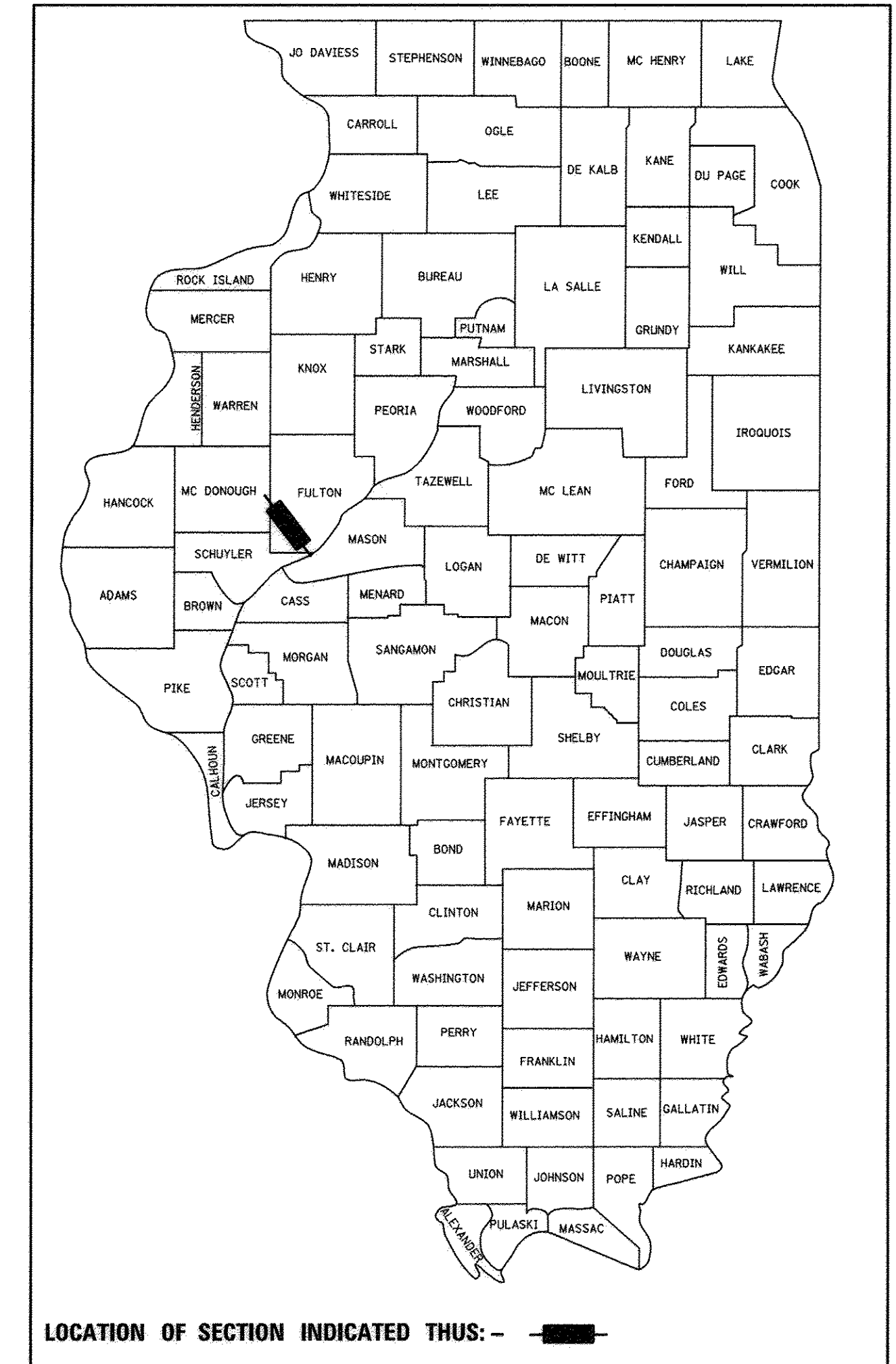
- 1 COVER SHEET
- 2 GENERAL NOTES & SUMMARY OF QUANTITIES
- 3 TYPICAL SECTION
- 4 OVERALL PLAN

LIST OF HIGHWAY STANDARDS

- 701301-04 LANE CLOSURE, 2L, 2W, SHORT TIME OPERATIONS
- 701306-03 LANE CLOSURE, 2L, 2W, SLOW MOVING OPERATIONS - DAY ONLY, FOR SPEEDS ≥ 45 MPH
- 701311-03 LANE CLOSURE, 2L, 2W, MOVING OPERATIONS - DAY ONLY
- 701901-06 TRAFFIC CONTROL DEVICES
- 780001-05 TYPICAL PAVEMENT MARKINGS

COUNTY HIGHWAY 13 (FAS ROUTE 451)
SECTION 16-00144-00-PP
PROJECT RS-0451(103)
COLD-IN-PLACE RECYLCING
FULTON COUNTY

C-94-013-17



FULL SIZE PLANS HAVE BEEN PREPARED USING STANDARD ENGINEERING SCALES. REDUCED SIZED PLANS WILL NOT CONFORM TO STANDARD SCALES. IN MAKING MEASUREMENTS ON REDUCED PLANS, THE ABOVE SCALES MAY BE USED.

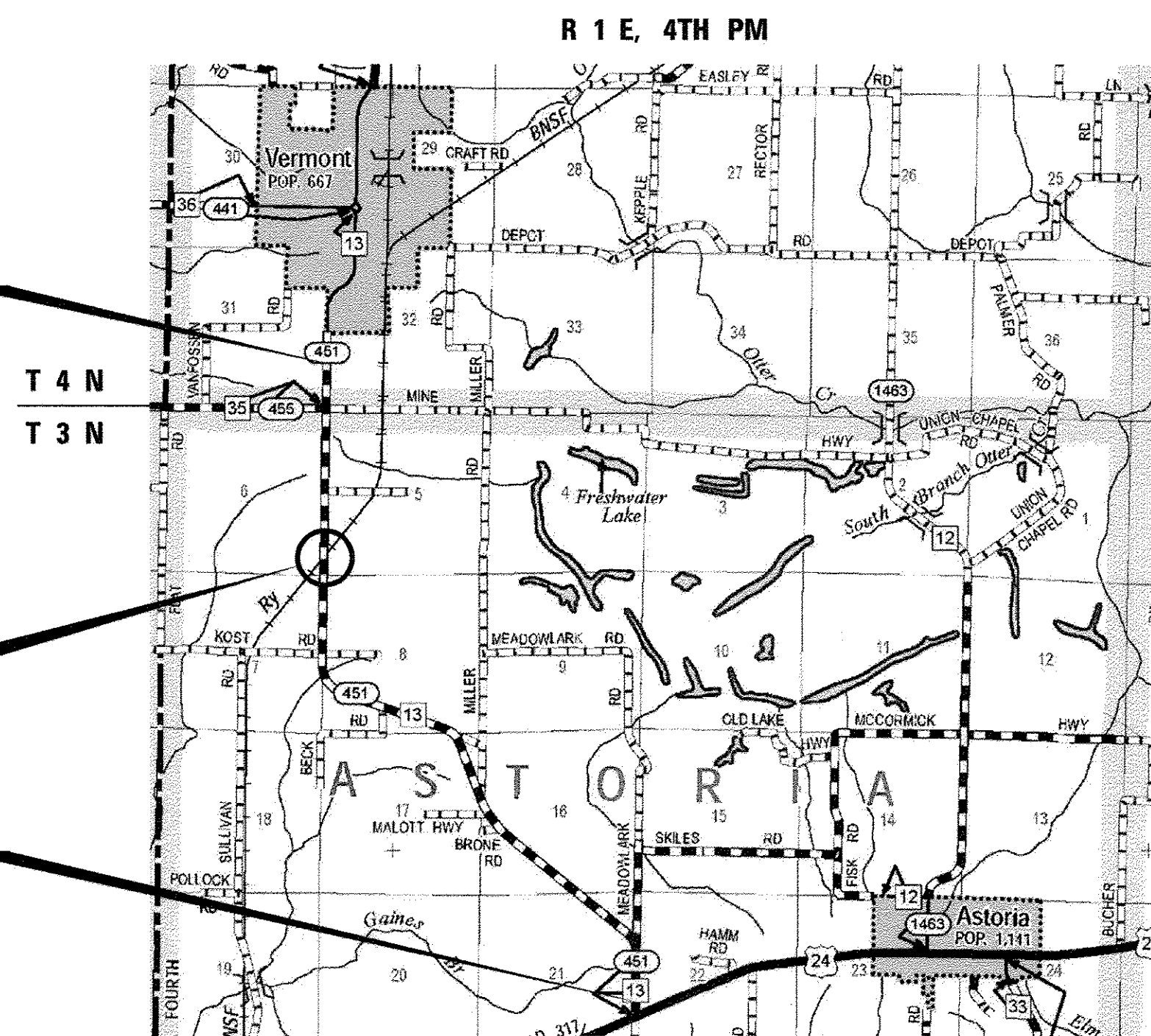
J.U.L.I.E.
 JOINT UTILITY LOCATION INFORMATION FOR EXCAVATION
 1-800-892-0123
 OR 811

PROJECT MANAGER: SHANE LARSON, P.E.
PROJECT ENGINEER: SHANE LARSON, P.E.
CATALOG 035428-00
CONTRACT NO. 89711

END IMPROVEMENT
SOUTH OF VERMONT

RAILROAD
OMISSION

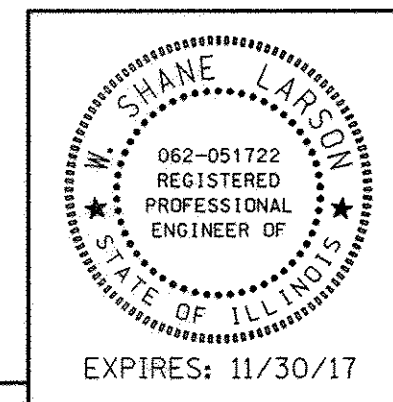
BEGIN IMPROVEMENT
NORTH OF US RTE 24



N

 LOCATION MAP
 NOT TO SCALE

GROSS LENGTH = 28,042.00 FT. = 5.311 MILE
 NET LENGTH = 27,952.00 FT. = 5.294 MILE

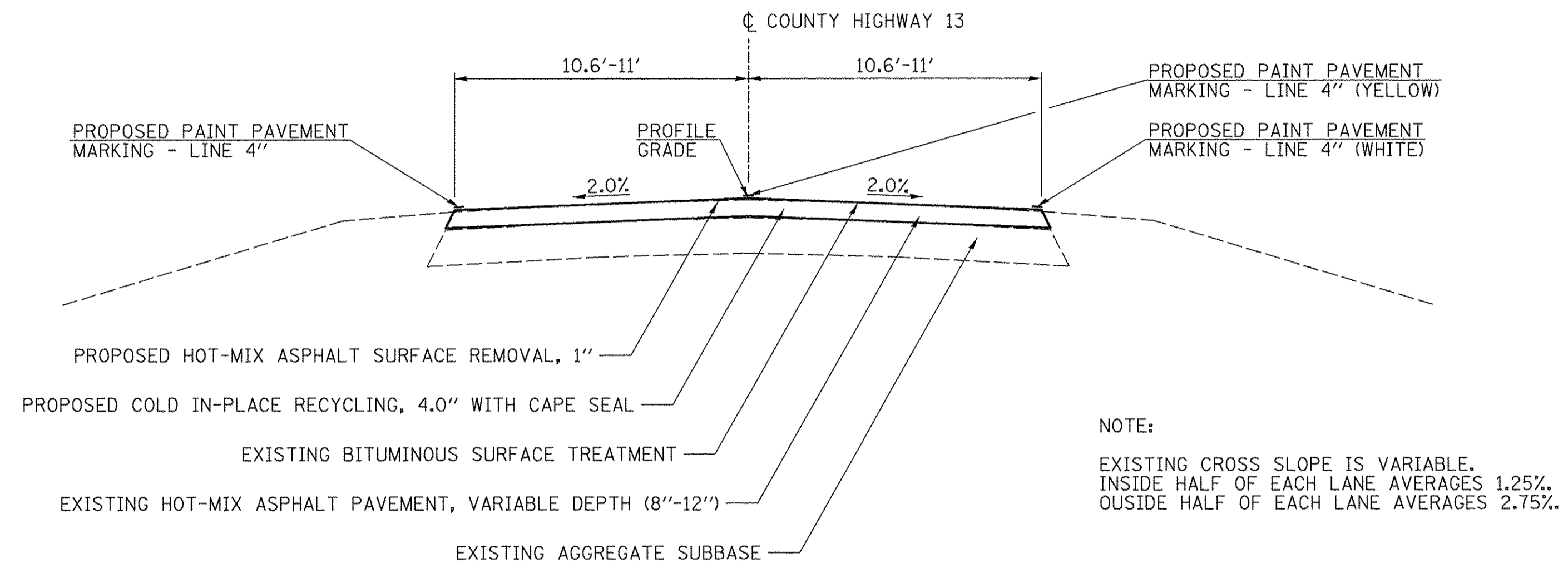


Hutchinson Engineering, Inc.
 Jacksonville - Peoria - Shorewood
 Since 1945
 2017 JOB #4017
 SIGNATURE
 ENGINEER'S SEAL

FUNCTIONAL CLASSIFICATION
RURAL MAJOR COLLECTOR
 2015 ADT = 1050
 DESIGN SPEED = 55 MPH
 PV = 88% SU = 7% MU = 5%

APPROVED	<i>[Signature]</i>	20 17
LOCAL AGENCY OFFICIAL		
PASSED	<i>[Signature]</i>	20 17
DISTRICT FOUR ENGINEER OF LOCAL ROADS & STREETS		
Releasing For Bid Based on Limited Review	<i>[Signature]</i>	20 17
REGION THREE ENGINEER		
STATE OF ILLINOIS DEPARTMENT OF TRANSPORTATION		

PRINTED BY THE AUTHORITY
OF THE STATE OF ILLINOIS



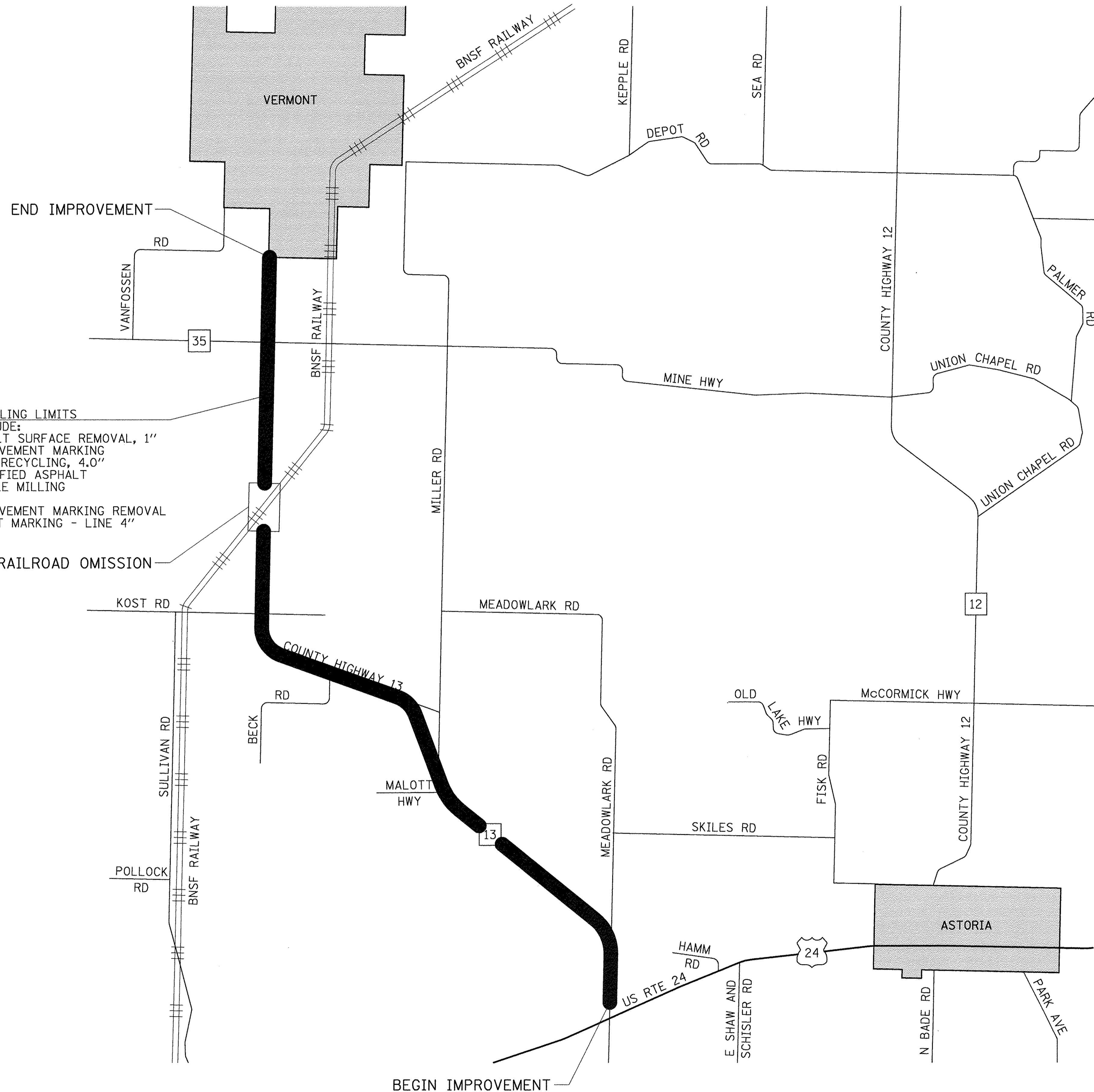
COUNTY HIGHWAY 13 TYPICAL SECTION

FILE NAME = V:\4217 - CH 13 - CIR - PH II (Fulton Co)\CADD\CADD Sheets\044217-sht-typical.dgn	USER NAME = SHughes	DESIGNED - WSL	REVISED -	FULTON COUNTY HIGHWAY DEPARTMENT	COUNTY HIGHWAY 13 TYPICAL SECTION			F.A.S. RTE. 451	SECTION 16-00144-00-PP	COUNTY FULTON	TOTAL SHEETS 4	SHEET NO. 3
SHT_PLAN	PLOT SCALE = 4,000' / in.	CHECKED - WSL	REVISED -		SCALE: N/A	SHEET NO. 1	OF 1 SHEETS	STA. N/A	TO STA. N/A	CONTRACT NO. 89711		
	PLOT DATE = 1/24/2017	DATE - 8/17/16	REVISED -		ILLINOIS FED. AID PROJECT							



COLD IN-PLACE RECYCLING LIMITS
 PAY ITEMS INCLUDE:
 -HOT-MIX ASPHALT SURFACE REMOVAL, 1"
 -SHORT TERM PAVEMENT MARKING
 -COLD IN-PLACE RECYCLING, 4.0"
 -CIR-FDR EMULSIFIED ASPHALT
 -SURFACE PROFILE MILLING
 -CAPE SEAL
 -SHORT TERM PAVEMENT MARKING REMOVAL
 -PAINT PAVEMENT MARKING - LINE 4"

90 FOOT RAILROAD OMISSION



MAINTENANCE OF TRAFFIC NOTES:

1. IMPROVEMENTS SHALL BE CONSTRUCTED USING TRAFFIC CONTROL IN ACCORDANCE WITH HIGHWAY STANDARDS 701306 & 701311 AND AS DIRECTED BY THE ENGINEER.
2. SHORT TERM PAVEMENT MARKINGS SHALL BE USED TO SEPARATE THE TWO DIRECTIONS OF TRAVEL UNTIL PERMANENT MARKINGS ARE PLACED.
3. LENGTH OF PROJECT SHALL BE TEMPORARILY SIGNED WITH SIGN G20-I100 (NO PASSING ZONES NOT STRIPPED NEXT XX MILES PER IL MUTCD), ANY EXISTING PASSING ZONES SIGNS SHALL BE COVERED UNTIL PERMANENT PAVEMENT MARKINGS HAVE BEEN PLACED.
4. ALL WORK ASSOCIATED WITH MAINTENANCE OF TRAFFIC SHALL BE PAID FOR AS TRAFFIC CONTROL AND PROTECTION (SPECIAL) AND SHORT TERM PAVEMENT MARKINGS.
5. SEE PROJECT SPECIFICATIONS FOR ADDITIONAL SIGNING REQUIREMENTS DURING CONSTRUCTION OF CAPE SEAL.

FILE NAME = V:\4817 - CH 13 - CIR - PH II (Fulton Co)\CADD\CADD Sheets\044017-sht-plan.dgn	USER NAME = SHughes	DESIGNED - WSL	REVISED -	FULTON COUNTY HIGHWAY DEPARTMENT	COUNTY HIGHWAY 13 COLD IN-PLACE RECYCLING OVERALL PLAN				F.A.S. RTE.	SECTION	COUNTY	TOTAL SHEETS	SHEET NO.
PLOT SCALE = 1:800' / 1" =	CHECKED - WSL	REVISED -	REVISED -		SCALE: N/A	SHEET NO. 1 OF 1 SHEETS	STA. N/A	TO STA. N/A	451	16-00144-00-PP	FULTON	4	4
PLOT DATE = 1/24/2017	DATE - 8/17/16	REVISED -	REVISED -		CONTRACT NO. 89711								
											ILLINOIS FED. AID PROJECT		