

STATE OF ILLINOIS  
DEPARTMENT OF TRANSPORTATION

F.A. RTE.	SECTION	COUNTY	TOTAL SHEETS	SHEET NO.
	PARK ROADS 2017-05	PERRY	17	1
		ILLINOIS	CONTRACT NO. 46437	

D-9

FOR INDEX OF SHEETS, SEE SHEET NO. 02

# PROPOSED HIGHWAY PLANS

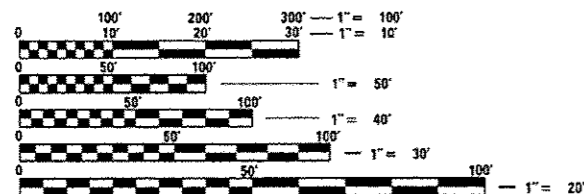
PYRAMID STATE RECREATION AREA  
SECTION PARK ROADS 2017-05

OIL AND CHIP  
PERRY COUNTY

C-30-023-17

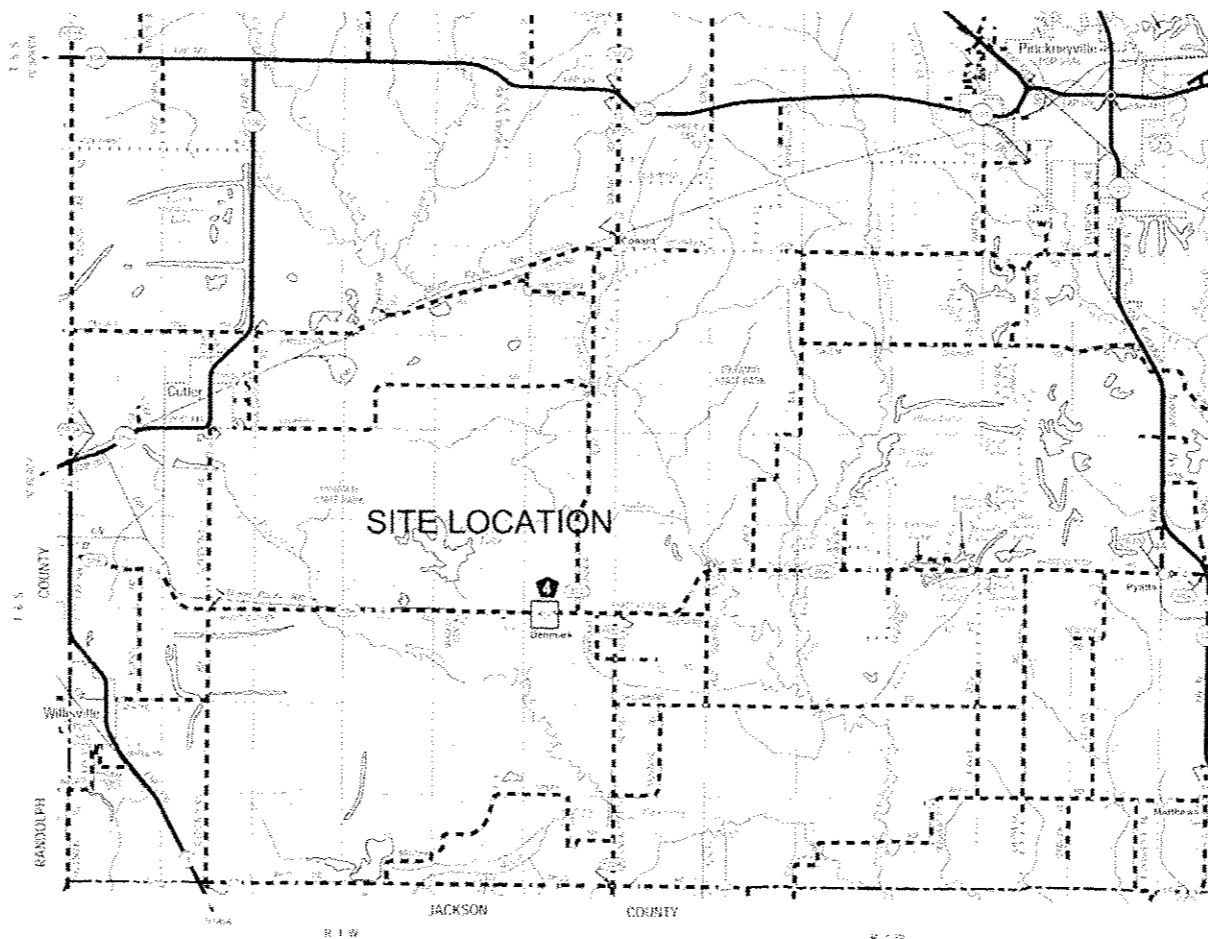


IDNR FILE # 5-17-009



FULL SIZE PLANS HAVE BEEN PREPARED USING STANDARD ENGINEERING SCALES. REDUCED SIZED PLANS WILL NOT CONFORM TO STANDARD SCALES. IN MAKING MEASUREMENTS ON REDUCED PLANS, THE ABOVE SCALES MAY BE USED.

J.U.L.I.E.  
JOINT UTILITY LOCATION INFORMATION FOR EXCAVATION  
1-800-892-0123  
OR 811



GROSS AND NET LENGTH = 28 MILES INTERNAL PARK ROADS

PROJECT ENGINEER VINCE MADONIA 217 /782-4074

STATE OF ILLINOIS  
DEPARTMENT OF TRANSPORTATION

SUBMITTED 2-23 2017

*[Signature]* REGIONAL ENGINEER 2

MAR 24 2017

*[Signature]* ENGINEER OF DESIGN AND ENVIRONMENT

2-23 2017

*[Signature]* DIRECTOR OF PROGRAM DEVELOPMENT

PRINTED BY THE AUTHORITY  
OF THE STATE OF ILLINOIS

CONTRACT NO. 46437

**GENERAL NOTES:**

1. ANY REFERENCE TO A STANDARD IN THESE PLANS SHALL BE INTERPRETED TO MEAN THE EDITION AS INDICATED BY THE SUB NUMBER LISTED IN THE INDEX OF SHEETS OR THE COPY OF THE STANDARD INCLUDED IN THESE PLANS.
2. IN ADDITION TO FIELD SURVEYS, PLAN DIMENSIONS AND DETAILS RELATIVE TO THE EXISTING FACILITIES HAVE BEEN TAKEN FROM EXISTING PLANS AND ARE SUBJECT TO CONSTRUCTION VARIATIONS. IT SHALL BE THE CONTRACTOR'S RESPONSIBILITY TO VERIFY SUCH DIMENSIONS AND DETAILS IN THE FIELD. SUCH VARIATIONS SHALL NOT BE A CAUSE FOR ADDITIONAL COMPENSATION DUE TO A CHANGE IN THE SCOPE OF WORK; HOWEVER, THE CONTRACTOR WILL BE PAID FOR THE QUANTITY ACTUALLY FURNISHED AT THE UNIT PRICE BID FOR THE WORK.
3. THE CONTRACTOR SHALL BE RESPONSIBLE FOR PROTECTING UTILITY PROPERTY FROM CONSTRUCTION OPERATIONS, AS OUTLINED IN ARTICLE 107.31 OF THE STANDARD SPECIFICATIONS. THE J.U.L.I.E. NUMBER IS 1-800-892-0123. A MINIMUM OF 48 HOURS ADVANCE NOTICE IS REQUIRED.

**HIGHWAY STANDARDS**

000001-06  
 701901-06  
 BLR 18-6  
 BLR 17-4  
 BLR 21-9  
 BLR 22-7

**INDEX OF SHEETS**

- 1 COVER SHEET
- 2 STANDARDS AND GENERAL NOTES
- 3 SUMMARY OF QUANTITIES
- 4-5 SCHEDULES
- 6 OVERALL SITE PLAN
- 7 ORIGINAL PYRAMID STATE PARK PLAN
- 8 CAPTAIN MANAGEMENT UNIT PLAN
- 9 DENMARK MANAGEMENT UNIT PLAN
- 10 GALUM MANAGEMENT UNIT PLAN
- 11-17 PARKING AREAS - PLAN VIEW

FILE NAME :	USER NAME : #USER#	DESIGNED -	REVISED -	<b>STATE OF ILLINOIS DEPARTMENT OF TRANSPORTATION</b>	<b>STANDARDS AND GENERAL NOTES</b>			F.A. RTE.	SECTION	COUNTY	TOTAL SHEETS	SHEET NO.
#FILE#		DRAWN -	REVISED -						PARK ROADS 2017-05	PERRY	17	2
#MODELNAME#		CHECKED -	REVISED -		SCALE:	SHEET 1 OF 1 SHEETS STA. TO STA.			<b>CONTRACT NO. 46437</b>			
		DATE -	REVISED -		ILLINOIS FED. AID PROJECT							

7/11/17

PARK ROADS  
100% STATE  
ROADWAY

CODE NO.	ITEM	UNIT	TOTAL QUANTITY	0005 RURAL
35800100	PREPARATION OF BASE	SQ YD	6,754	6,754
35800200	AGGREGATE BASE REPAIR	TON	715	715
40300200	BITUMINOUS MATERIALS (PRIME COAT)	TON	572.9	572.9
40300400	BITUMINOUS MATERIALS (COVER AND SEAL COATS)	TON	1,252.8	1,252.8
40300500	COVER COAT AGGREGATE	TON	7,448	7,448
40300600	SEAL COAT AGGREGATE	TON	4,213	4,213
67100100	MOBILIZATION	LSUM	1	1
X4401198	HOT-MIX ASPHALT SURFACE REMOVAL, VARIABLE DEPTH	SQ YD	9,200	9,200

8

REV

Pyramid State Park - Schedule of Quantities

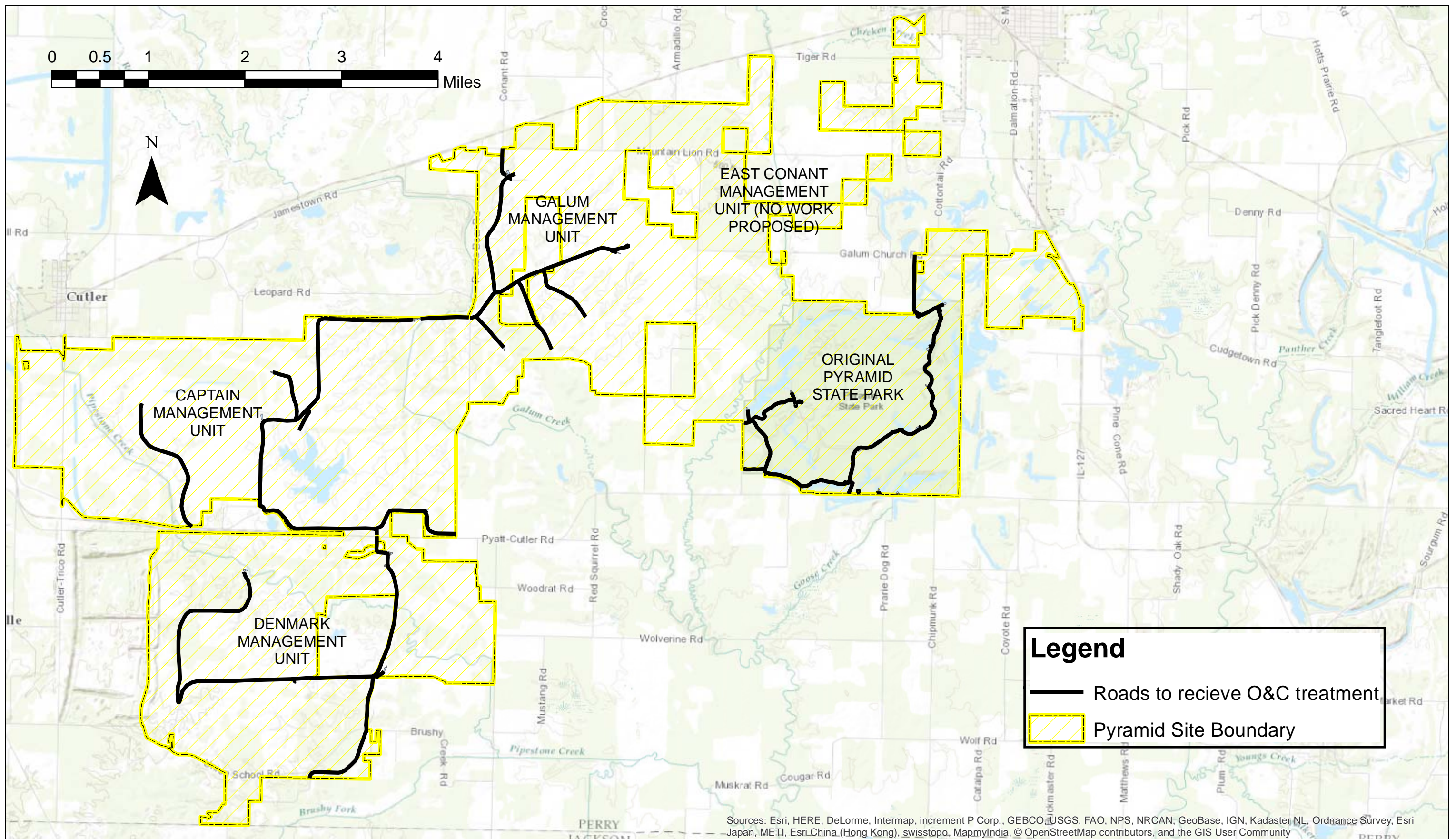
Application Rates:

Prime Coat	0.40	gal/SY	Prime Density	8.5	lb/gal
Bit Cover Coat 1	0.35	gal/SY	Cov. Coat Density	8.5	lb/gal
Agg Cover Coat 1	25	lb/SY	Bit Seal Coat Den.	8.5	lb/gal
Bit Cover Coat 2	0.30	gal/SY			
Agg Cover Coat 2	25	lb/SY			
Bit Seal Coat	0.30	gal/SY			
Bit Seal Coat Agg	25	lb/SY			

	Length (mi)	Ave. Width (ft)	Area (SY)	Tmt (A1/A3)	Prime Coat (T)	Bit. Cover Coat 1 (T)	Agg. Cover Coat 1 (T)	Bit. Cover Coat 2 (T)	Agg. Cover Coat 2 (T)	Bit. Seal Coat (T)	Bit Seal Coat Agg (T)	Preparation of Base (SY)	Aggregate Base Repair (T)	HMA Surface Rem. (var depth) (SY)
<b>Roadways</b>														
<b>Original Pyramid State Park</b>														
ORP R1	2.600	16	24,405	A3	41.49	36.30	305.07	31.12	305.07	31.12	305.07	--	--	--
ORP R2	0.923	17	9,205	A3	15.65	13.69	115.07	11.74	115.07	11.74	115.07	--	--	--
ORP R3	1.835	15	16,148	A3	27.45	24.02	201.85	20.59	201.85	20.59	201.85	--	--	--
ORP R3 (HMA surf ex.)	0.480	16	4,506	A1	7.66	--	--	--	--	5.74	56.32	--	--	--
ORP A1 Road	0.025	20	293	A3	0.50	0.44	3.67	0.37	3.67	0.37	3.67	--	--	--
ORP B1 Roads	0.266	14	2,185	A3	3.71	3.25	27.31	2.79	27.31	2.79	27.31	--	--	--
ORP B2 Road	0.130	14	1,068	A3	1.82	1.59	13.35	1.36	13.35	1.36	13.35	--	--	--
ORP B3 Road	0.229	14	1,881	A3	3.20	2.80	23.51	2.40	23.51	2.40	23.51	--	--	--
ORP B5 Road	0.011	14	90	A3	0.15	0.13	1.13	0.12	1.13	0.12	1.13	--	--	--
ORP B6 Road	0.033	18	348	A3	0.59	0.52	4.36	0.44	4.36	0.44	4.36	--	--	--
ORP B7 Road	0.027	14	222	A3	0.38	0.33	2.77	0.28	2.77	0.28	2.77	--	--	--
ORP B8 Road	0.031	14	255	A3	0.43	0.38	3.18	0.32	3.18	0.32	3.18	--	--	--
ORP B10 Road	0.121	14	994	A3	1.69	1.48	12.42	1.27	12.42	1.27	12.42	--	--	--
ORP H1 Road	0.056	18	591	A3	1.01	0.88	7.39	0.75	7.39	0.75	7.39	--	--	--
ORP H3 Road	0.046	18	486	A3	0.83	0.72	6.07	0.62	6.07	0.62	6.07	--	--	--
ORP H4 Road	0.026	15	229	A3	0.39	0.34	2.86	0.29	2.86	0.29	2.86	--	--	--
ORP H5 Roads	0.057	14	468	A3	0.80	0.70	5.85	0.60	5.85	0.60	5.85	--	--	--
ORP S1 Road	0.088	15	774	A3	1.32	1.15	9.68	0.99	9.68	0.99	9.68	--	--	--
<b>Captain Management Unit</b>														
CAP R1	5.263	20	61,753	A3	104.98	91.86	771.91	78.73	771.91	78.73	771.91	--	--	--
CAP R2	0.628	12	4,421	A3	7.52	6.58	55.26	5.64	55.26	5.64	55.26	624	66	--
CAP R3	1.101	18	11,627	A3	19.77	17.29	145.33	14.82	145.33	14.82	145.33	--	--	--
CAP R4	1.581	20	18,550	A3	31.54	27.59	231.88	23.65	231.88	23.65	231.88	--	--	--
CAP R5	0.255	12	1,795	A3	3.05	2.67	22.44	2.29	22.44	2.29	22.44	1,795	190	--
CAP B1 Road	0.030	20	352	A3	0.60	0.52	4.40	0.45	4.40	0.45	4.40	--	--	--
CAP B2 Road	0.021	20	246	A3	0.42	0.37	3.08	0.31	3.08	0.31	3.08	--	--	--
<b>Denmark Management Unit</b>														
DEN R1	2.964	18	31,300	A3	53.21	46.56	391.25	39.91	391.25	39.91	391.25	--	--	--
DEN R1 (O&C ex.)	0.090	20	1,056	A1	1.80	--	--	--	--	1.35	13.20	--	--	--
DEN R2	2.147	20	25,191	A3	42.83	37.47	314.89	32.12	314.89	32.12	314.89	--	--	--
DEN R3	1.946	16	18,266	A3	31.05	27.17	228.33	23.29	228.33	23.29	228.33	889	94	--
DEN B1 Road	0.128	16	1,201	A3	2.04	1.79	15.02	1.53	15.02	1.53	15.02	--	--	--
DEN B4 Road	0.023	14	189	A3	0.32	0.28	2.36	0.24	2.36	0.24	2.36	--	--	--
DEN H1 Road	0.040	16	375	A3	0.64	0.56	4.69	0.48	4.69	0.48	4.69	--	--	--

	Length (mi)	Ave. Width (ft)	Area (SY)	Tmt (A1/A3)	Prime Coat (T)	Bit. Cover Coat 1 (T)	Agg. Cover Coat 1 (T)	Bit. Cover Coat 2 (T)	Agg. Cover Coat 2 (T)	Bit. Seal Coat (T)	Bit Seal Coat Agg (T)	Preparation of Base (SY)	Aggregate Base Repair (T)	HMA Surface Rem. (var depth) (SY)
<i>Galum Management Unit</i>														
GAL R1	1.337	20	15,687	A3	26.67	23.34	196.09	20.00	196.09	20.00	196.09	--	--	--
GAL R2 (O&C ex.)	0.299	17	2,982	A1	5.07	--	--	--	--	3.80	37.28	113	12	--
GAL R3	0.719	20	8,436	A3	14.34	12.55	105.45	10.76	105.45	10.76	105.45	--	--	--
GAL R3 (O&C ex.)	1.181	20	13,857	A1	23.56	--	--	--	--	17.67	173.21	--	--	9,200
GAL R4	0.43	15	3,784	A3	6.43	5.63	47.30	4.82	47.30	4.82	47.30	--	--	--
GAL R5	0.796	15	7,005	A3	11.91	10.42	87.56	8.93	87.56	8.93	87.56	--	--	--
GAL R6	0.701	12	4,935	A3	8.39	7.34	61.69	6.29	61.69	6.29	61.69	--	--	--
GAL B3 Road	0.068	20	798	A3	1.36	1.19	9.97	1.02	9.97	1.02	9.97	--	--	--
GAL B4 Road	0.044	20	516	A3	0.88	0.77	6.45	0.66	6.45	0.66	6.45	333	35	--
<i>Parking Areas</i>														
ORP A1			1334	A3	2.27	1.98	16.68	1.70	16.68	1.70	16.68	--	--	--
ORP B1			834	A3	1.42	1.24	10.43	1.06	10.43	1.06	10.43	--	--	--
ORP B2			746	A3	1.27	1.11	9.33	0.95	9.33	0.95	9.33	--	--	--
ORP B3			271	A3	0.46	0.40	3.39	0.35	3.39	0.35	3.39	--	--	--
ORP B4			1388	A3	2.36	2.06	17.35	1.77	17.35	1.77	17.35	--	--	--
ORP B5			651	A3	1.11	0.97	8.14	0.83	8.14	0.83	8.14	--	--	--
ORP B6			835	A3	1.42	1.24	10.44	1.06	10.44	1.06	10.44	--	--	--
ORP B7			354	A3	0.60	0.53	4.43	0.45	4.43	0.45	4.43	--	--	--
ORP B8			1881	A3	3.20	2.80	23.51	2.40	23.51	2.40	23.51	--	--	--
ORP B9			1196	A3	2.03	1.78	14.95	1.52	14.95	1.52	14.95	--	--	--
ORP B10			372	A3	0.63	0.55	4.65	0.47	4.65	0.47	4.65	--	--	--
ORP H2			760	A3	1.29	1.13	9.50	0.97	9.50	0.97	9.50	--	--	--
ORP H4			878	A1	1.49	--	--	--	--	1.12	10.98	--	--	--
ORP H5			530	A1	0.90	--	--	--	--	0.68	6.63	--	--	--
ORP S1			309	A3	0.53	0.46	3.86	0.39	3.86	0.39	3.86	--	--	--
CAP B1			906	A3	1.54	1.35	11.33	1.16	11.33	1.16	11.33	--	--	--
CAP B2			2131	A3	3.62	3.17	26.64	2.72	26.64	2.72	26.64	--	--	--
CAP B3			957	A3	1.63	1.42	11.96	1.22	11.96	1.22	11.96	--	--	--
CAP B4			3366	A1	5.72	--	--	--	--	4.29	42.08	--	--	--
DEN B1			2225	A1	3.78	--	--	--	--	2.84	27.81	--	--	--
DEN B2			2461	A3	4.18	3.66	30.76	3.14	30.76	3.14	30.76	--	--	--
DEN B3			1995	A1	3.39	--	--	--	--	2.54	24.94	--	--	--
DEN B4			1468	A1	2.50	--	--	--	--	1.87	18.35	--	--	--
DEN H1			708	A3	1.20	1.05	8.85	0.90	8.85	0.90	8.85	--	--	--
DEN H2			440	A3	0.75	0.65	5.50	0.56	5.50	0.56	5.50	--	--	--
GAL B1			906	A3	1.54	1.35	11.33	1.16	11.33	1.16	11.33	--	--	--
GAL B2			2131	A1	3.62	--	--	--	--	2.72	26.64	--	--	--
GAL B3			698	A3	1.19	1.04	8.73	0.89	8.73	0.89	8.73	--	--	--
GAL B4			1725	A3	2.93	2.57	21.56	2.20	21.56	2.20	21.56	--	--	--
GAL H1			4095	A1	6.96	--	--	--	--	5.22	51.19	--	--	--
As needed for parking areas			--	--	--	--	--	--	--	--	--	3,000	318	--
<b>TOTAL LENGTH</b>	<b>28.78 miles</b>				<b>572.9</b>	<b>443.2</b>	<b>3,724.2</b>	<b>379.9</b>	<b>3,724.2</b>	<b>429.7</b>	<b>4,212.8</b>	<b>6,754.0</b>	<b>715.0</b>	<b>9,200.0</b>

FILE NAME *	USER NAME * #USER*	DESIGNED -	REVISED -	<b>STATE OF ILLINOIS DEPARTMENT OF TRANSPORTATION</b>	<b>SCHEDULE OF QUANTITIES</b>				F.A. RTE.	SECTION	COUNTY	TOTAL SHEETS	SHEET NO.
#FILEL*	DRAWN -	REVISED -	PARK ROADS 2017-05						PERRY	17	5		
#MODELNAME*	PLOT SCALE * #SCALE*	CHECKED -	REVISED -		SCALE: SHEET 2 OF 2 SHEETS STA. TO STA.				ILLINOIS FED. AID PROJECT CONTRACT NO. 46437				
	PLOT DATE * #DATE*	DATE -	REVISED -										



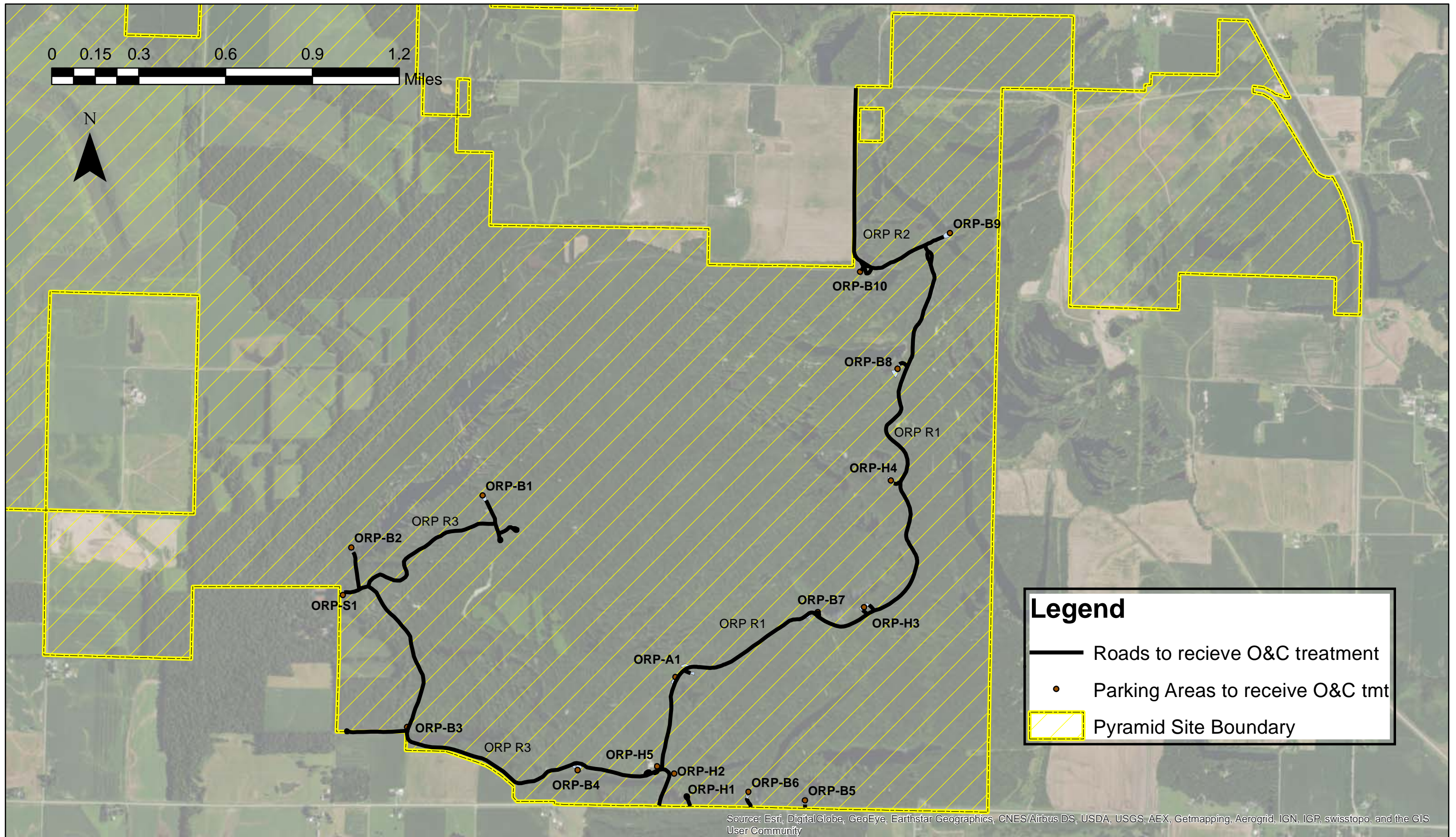
**Legend**

- Roads to receive O&C treatment
- ▨ Pyramid Site Boundary

Sources: Esri, HERE, DeLorme, Intermap, increment P Corp., GEBCO, USGS, FAO, NPS, NRCAN, GeoBase, IGN, Kadaster NL, Ordnance Survey, Esri Japan, METI, Esri.China (Hong Kong), swisstopo, MapmyIndia, © OpenStreetMap contributors, and the GIS User Community

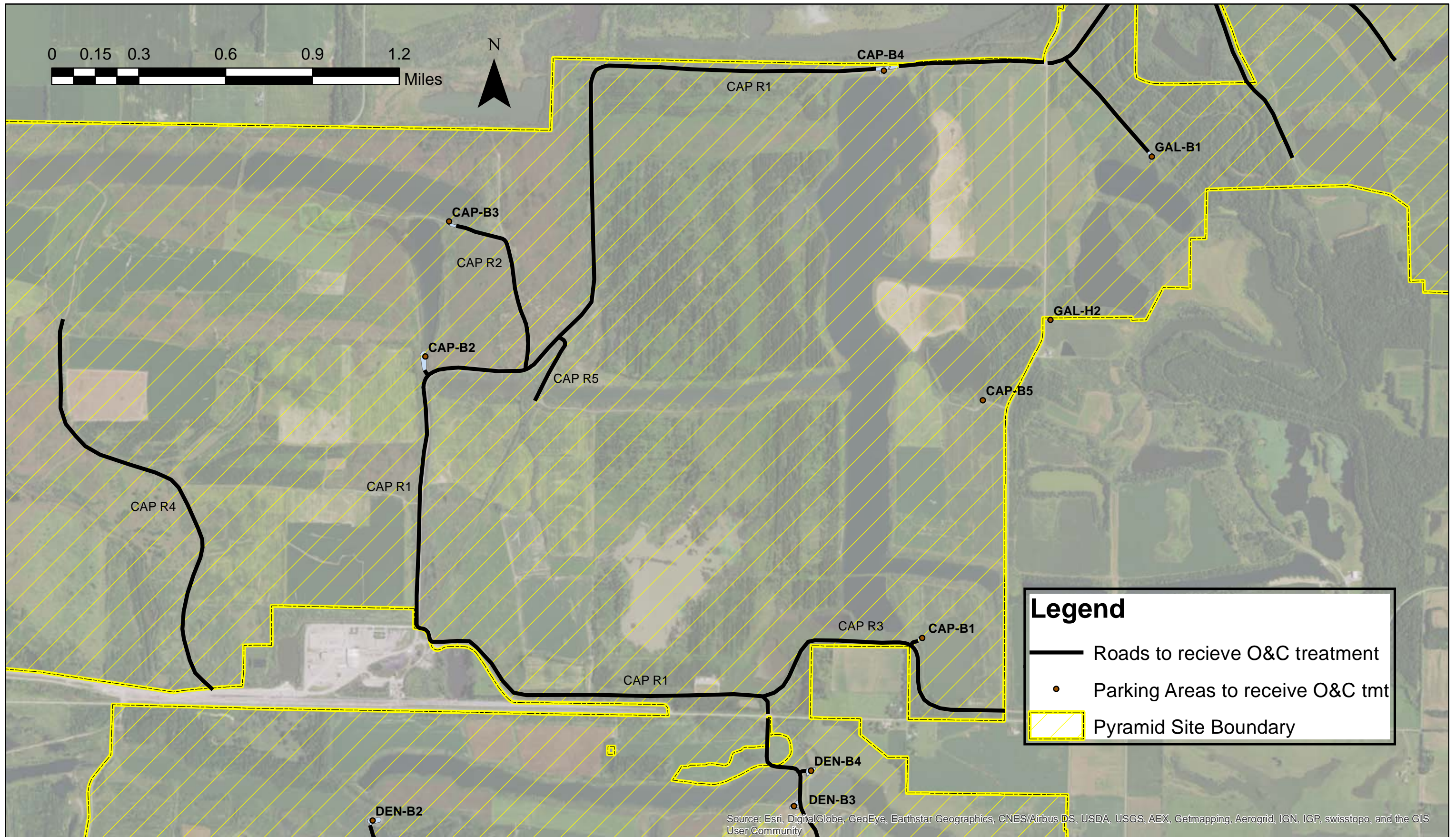
# Overall Site Plan

Contract 46437  
 PYRAMID STATE PARK  
 PERRY COUNTY  
 Section PARK ROADS 2017-05  
 SHEET 06 OF 17



# Original Pyramid State Park

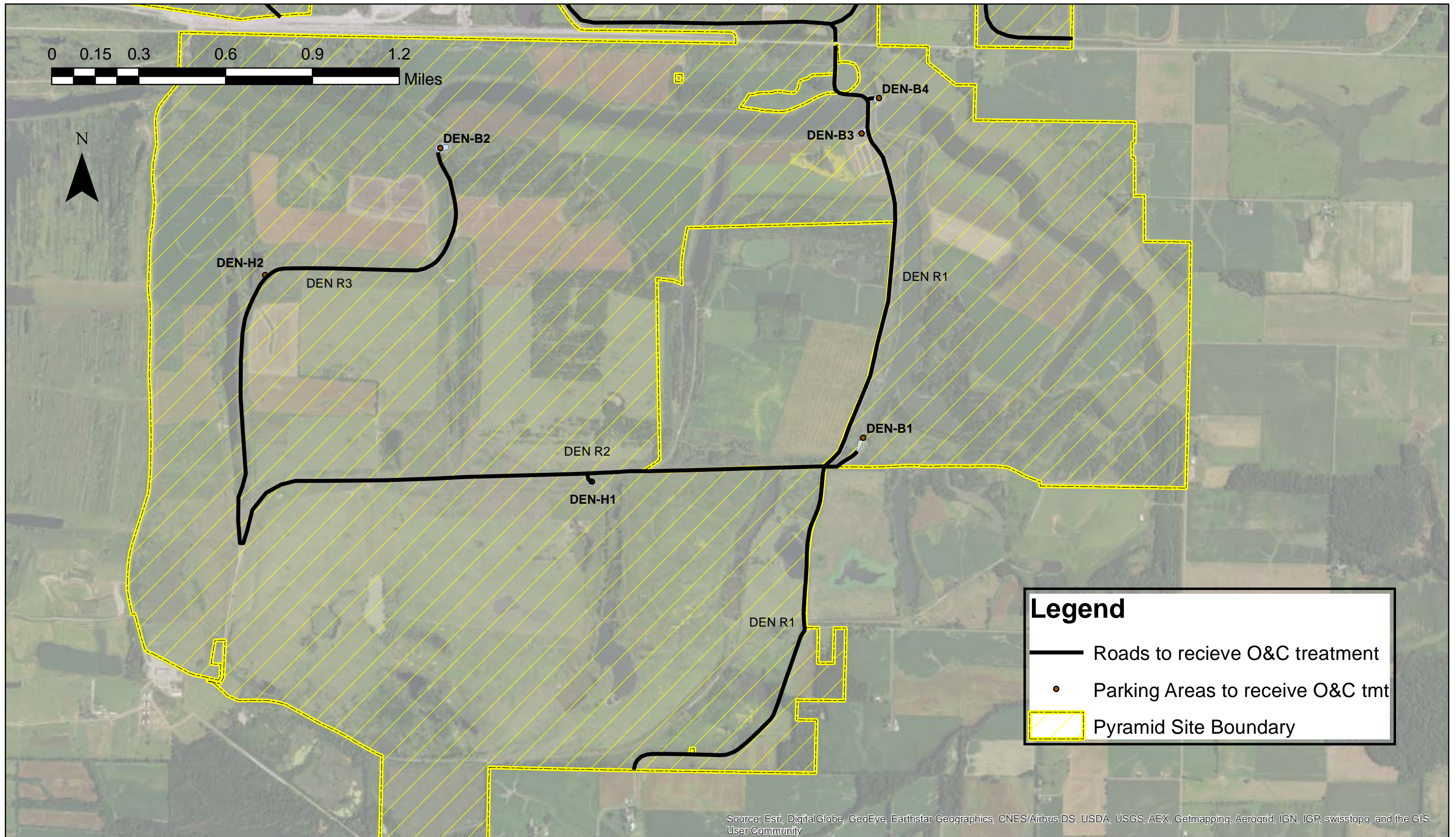
Contract 46437  
 PYRAMID STATE PARK  
 PERRY COUNTY  
 Section PARK ROADS 2017-05  
 SHEET 07 OF 17



# Captain Management Unit

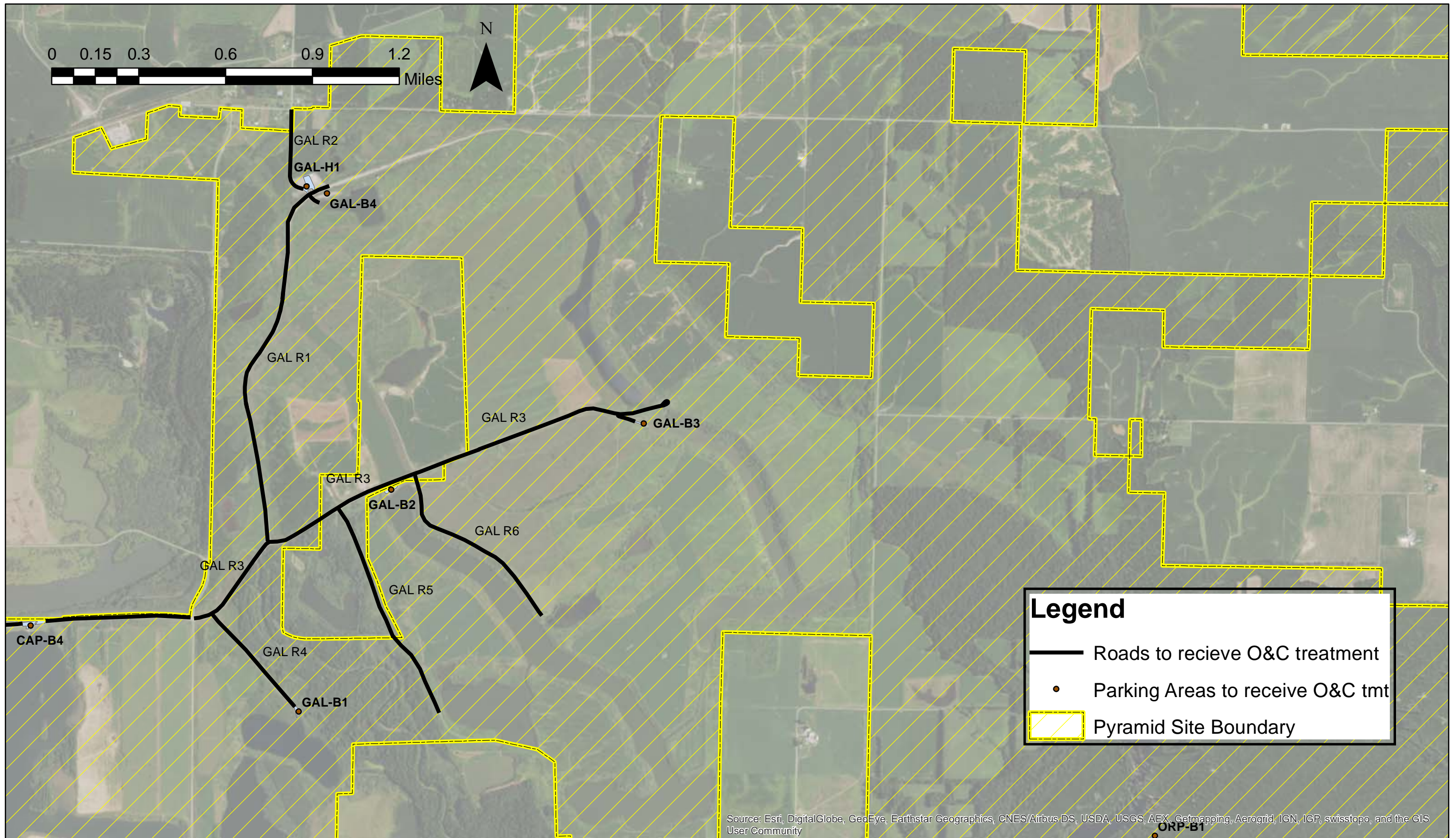
Contract 46437  
 PYRAMID STATE PARK  
 PERRY COUNTY  
 Section PARK ROADS 2017-05  
 SHEET 08 OF 17





# Denmark Management Unit

Contract 46437  
 PYRAMID STATE PARK  
 PERRY COUNTY  
 Section PARK ROADS 2017-05  
 SHEET 09 OF 17

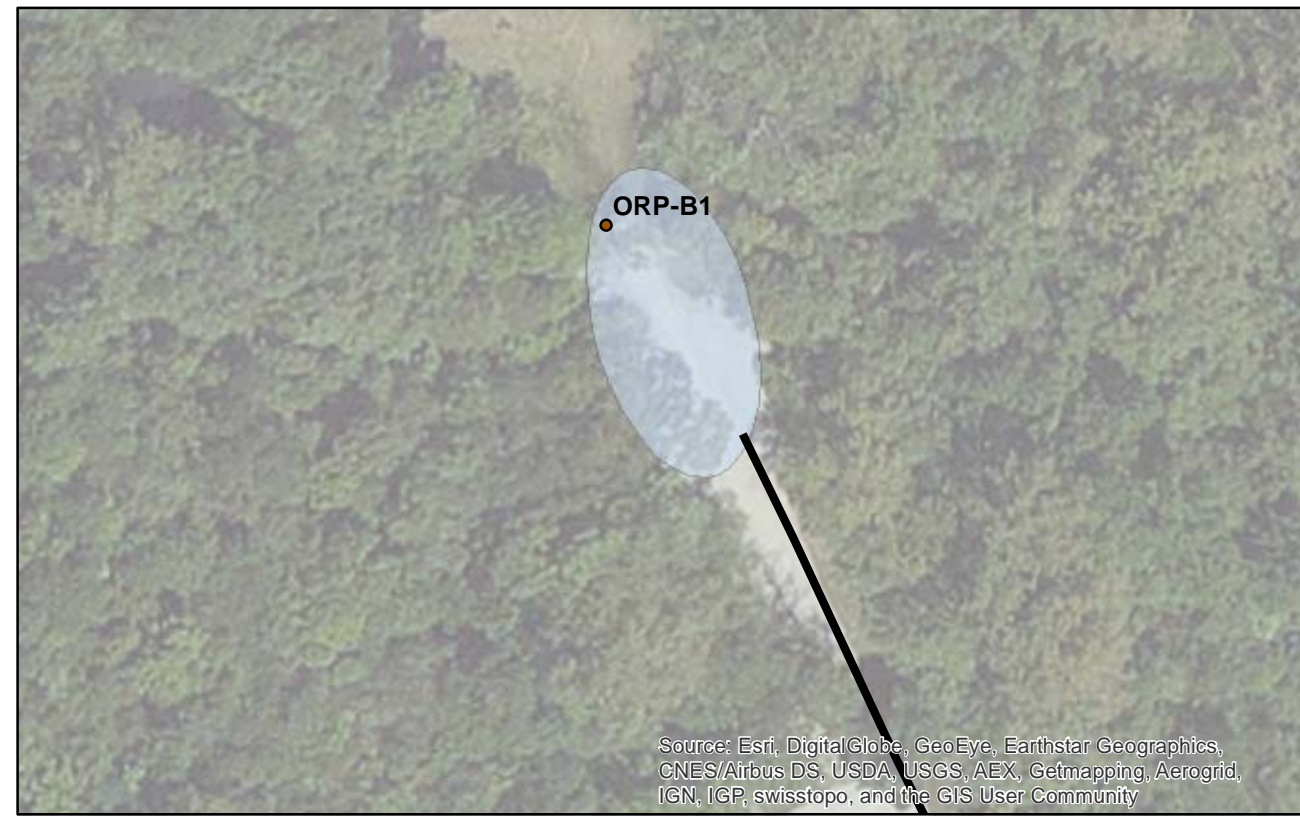


# Galum Management Unit

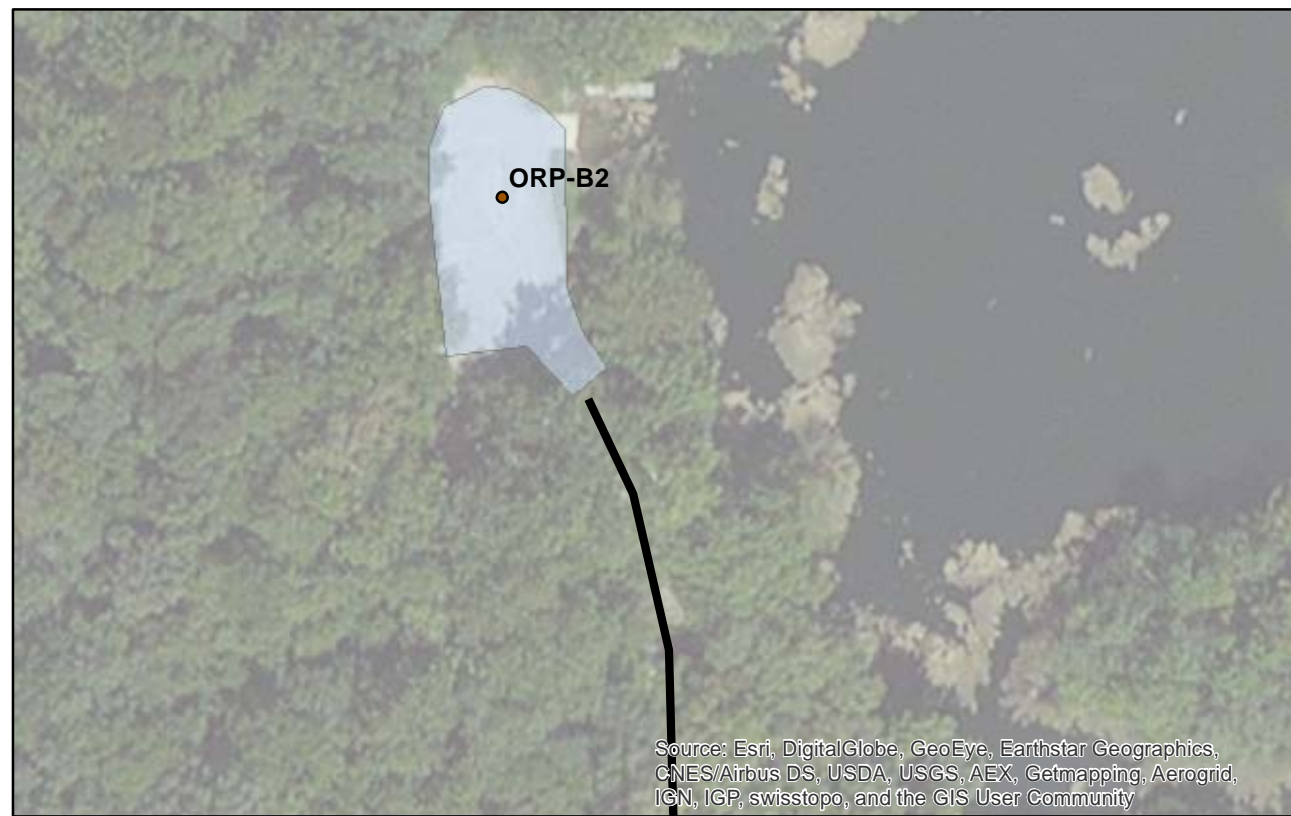
Contract 46437  
 PYRAMID STATE PARK  
 PERRY COUNTY  
 Section PARK ROADS 2017-05  
 SHEET 10 OF 17



ORP A1 Parking Area



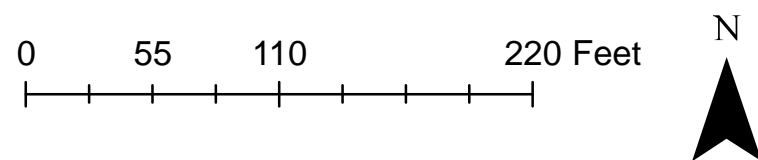
ORP B1 Parking Area



ORP B2 Parking Area



ORP B3 Parking Area



# Parking Areas - Original Pyramid State Park

Contract 46437  
 PYRAMID STATE PARK  
 PERRY COUNTY  
 Section PARK ROADS 2017-05  
 SHEET 11 OF 17



ORP B4 Parking Area



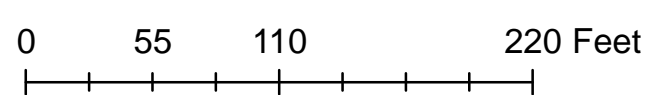
ORP B5 Parking Area



ORP B6 Parking Area

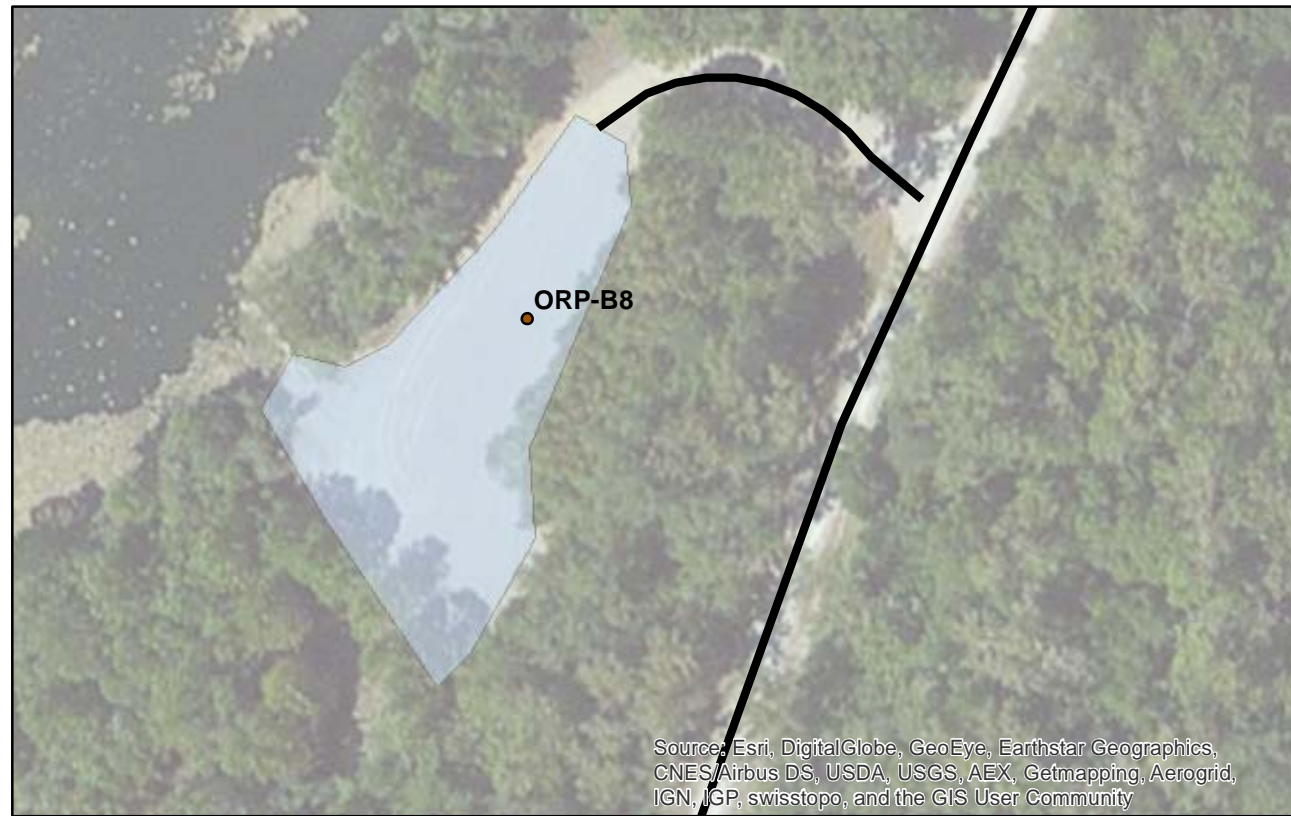


ORP B7 Parking Area



# Parking Areas - Original Pyramid State Park

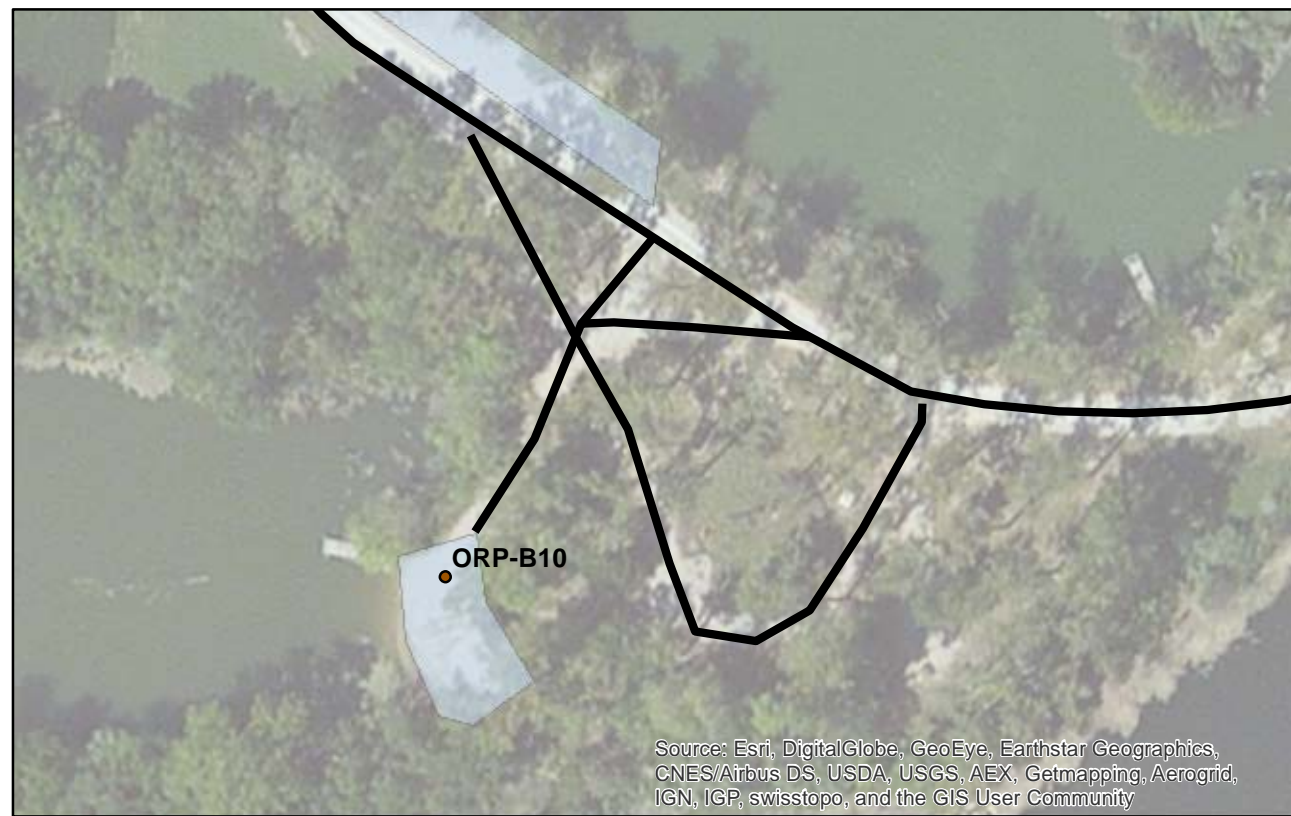
Contract 46437  
 PYRAMID STATE PARK  
 PERRY COUNTY  
 Section PARK ROADS 2017-05  
 SHEET 12 OF 17



ORP B8 Parking Area



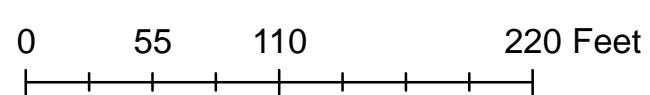
ORP B9 Parking Area



ORP B10 Parking Area



ORP H2, H5 Parking Area



# Parking Areas - Original Pyramid State Park

Contract 46437  
 PYRAMID STATE PARK  
 PERRY COUNTY  
 Section PARK ROADS 2017-05  
 SHEET 13 OF 17



ORP H4 Parking Area

Source: Esri, DigitalGlobe, GeoEye, Earthstar Geographics, CNES/Airbus DS, USDA, USGS, AEX, Getmapping, Aerogrid, IGN, IGP, swisstopo, and the GIS User Community



ORP S1 Parking Area

Source: Esri, DigitalGlobe, GeoEye, Earthstar Geographics, CNES/Airbus DS, USDA, USGS, AEX, Getmapping, Aerogrid, IGN, IGP, swisstopo, and the GIS User Community



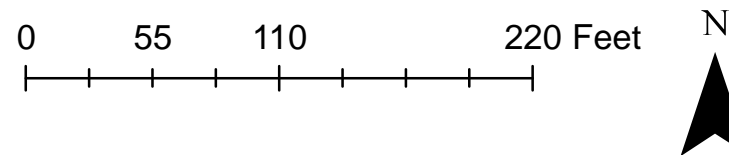
CAP B1 Parking Area

Source: Esri, DigitalGlobe, GeoEye, Earthstar Geographics, CNES/Airbus DS, USDA, USGS, AEX, Getmapping, Aerogrid, IGN, IGP, swisstopo, and the GIS User Community



CAP B2 Parking Area

Source: Esri, DigitalGlobe, GeoEye, Earthstar Geographics, CNES/Airbus DS, USDA, USGS, AEX, Getmapping, Aerogrid, IGN, IGP, swisstopo, and the GIS User Community



## Parking Areas - Original Pyramid / Captain

Contract 46437  
 PYRAMID STATE PARK  
 PERRY COUNTY  
 Section PARK ROADS 2017-05  
 SHEET 14 OF 17



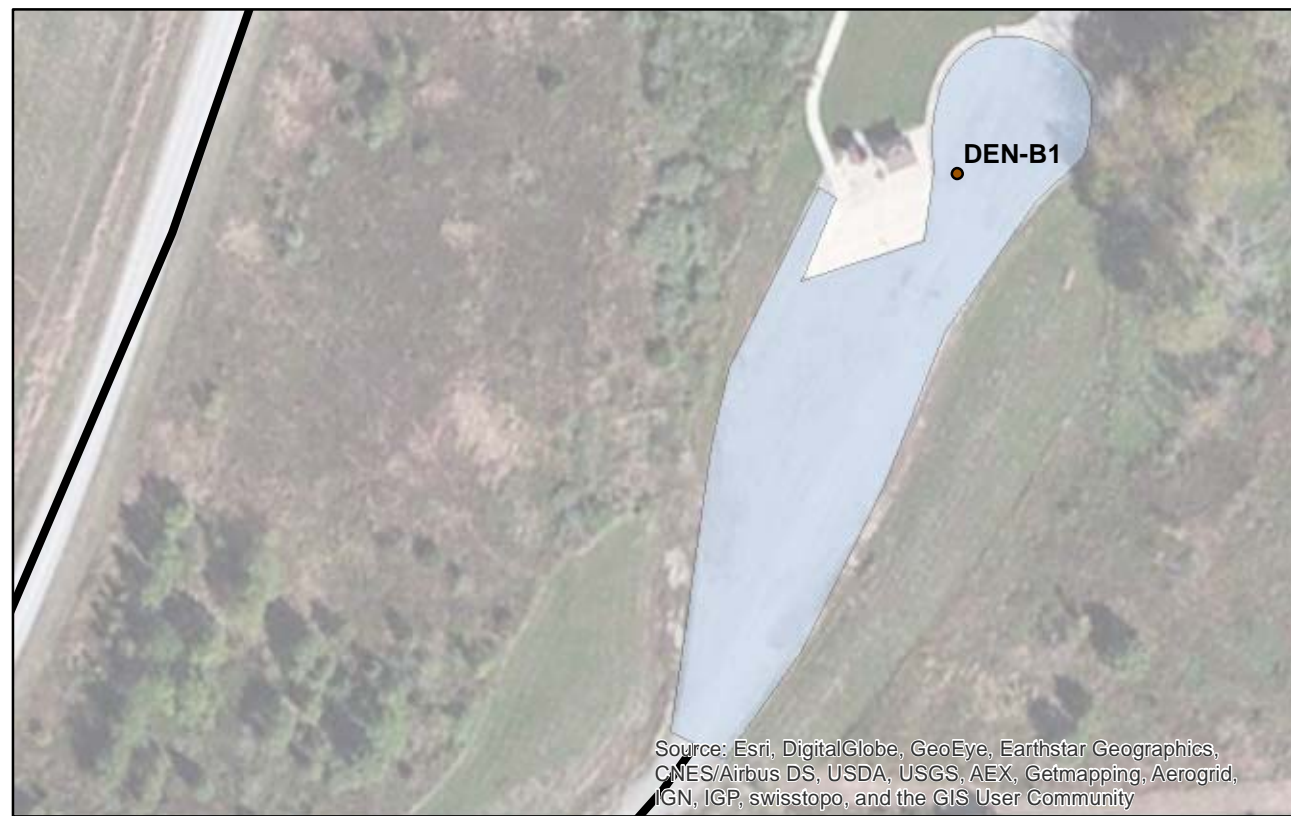
Source: Esri, DigitalGlobe, GeoEye, Earthstar Geographics, CNES/Airbus DS, USDA, USGS, AEX, Getmapping, Aerogrid, IGN, IGP, swisstopo, and the GIS User Community

CAP B3 Parking Area



Source: Esri, DigitalGlobe, GeoEye, Earthstar Geographics, CNES/Airbus DS, USDA, USGS, AEX, Getmapping, Aerogrid, IGN, IGP, swisstopo, and the GIS User Community

CAP B4 Parking Area



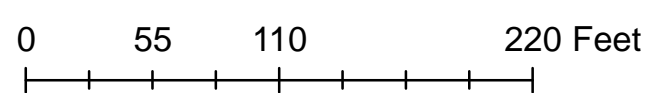
Source: Esri, DigitalGlobe, GeoEye, Earthstar Geographics, CNES/Airbus DS, USDA, USGS, AEX, Getmapping, Aerogrid, IGN, IGP, swisstopo, and the GIS User Community

DEN B1 Parking Area



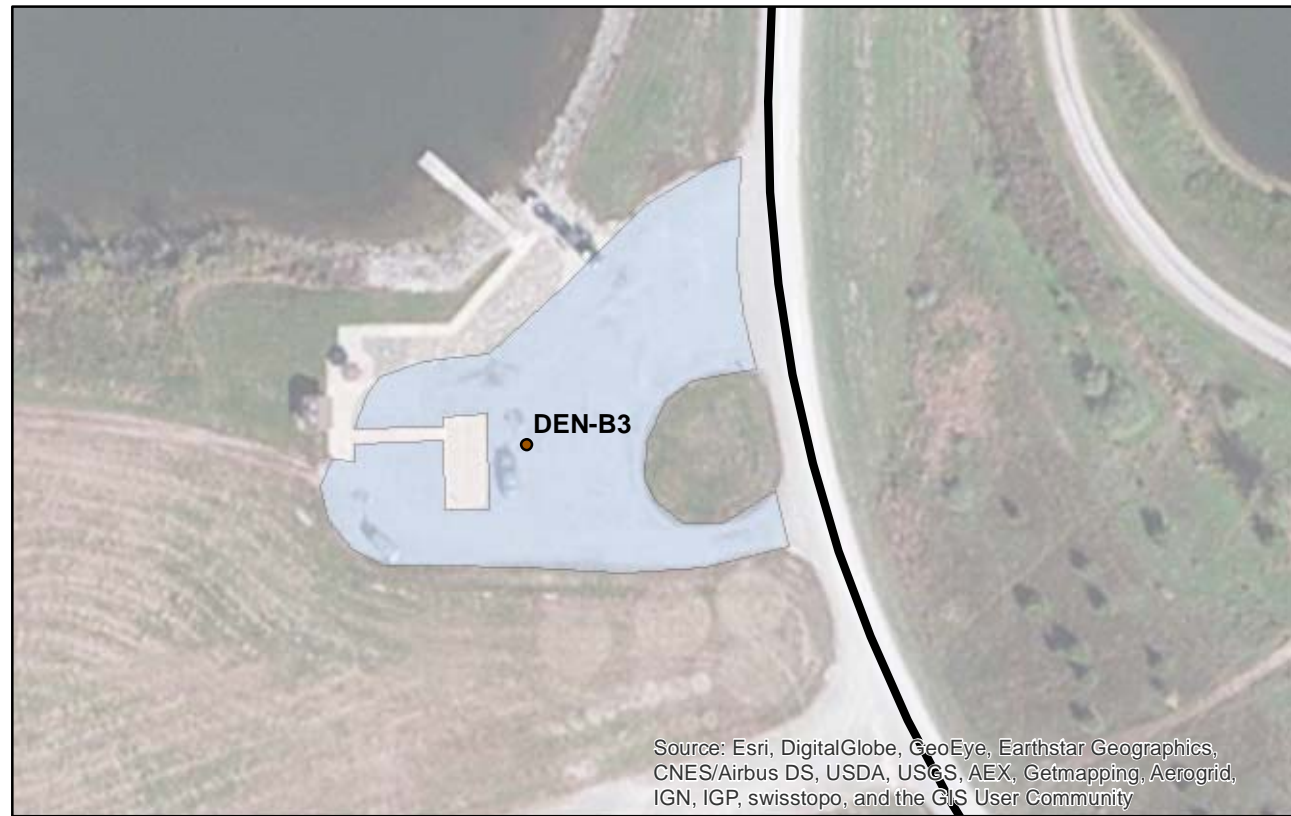
Source: Esri, DigitalGlobe, GeoEye, Earthstar Geographics, CNES/Airbus DS, USDA, USGS, AEX, Getmapping, Aerogrid, IGN, IGP, swisstopo, and the GIS User Community

DEN B2 Parking Area



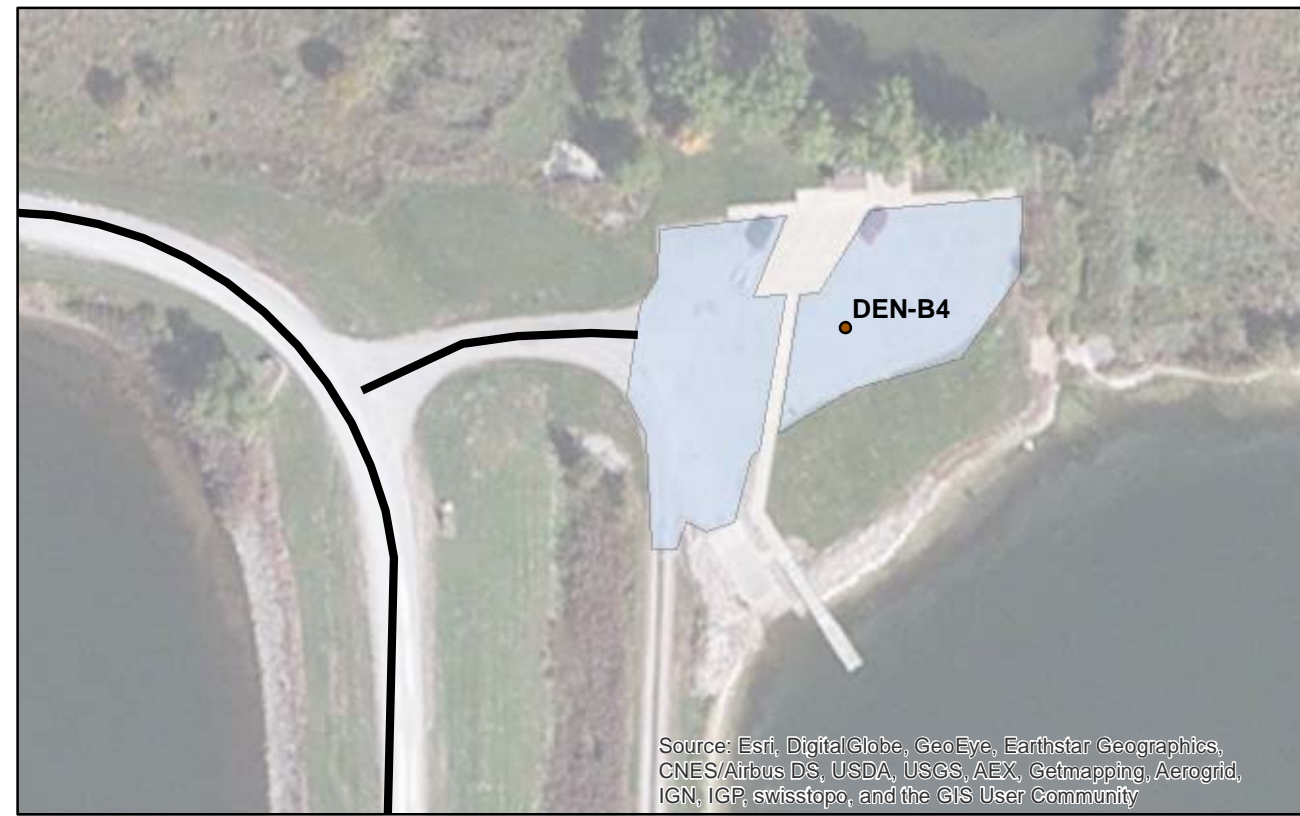
# Parking Areas - Captain / Denmark

Contract 46437  
 PYRAMID STATE PARK  
 PERRY COUNTY  
 Section PARK ROADS 2017-05  
 SHEET 15 OF 17



Source: Esri, DigitalGlobe, GeoEye, Earthstar Geographics, CNES/Airbus DS, USDA, USGS, AEX, Getmapping, Aerogrid, IGN, IGP, swisstopo, and the GIS User Community

DEN B3 Parking Area



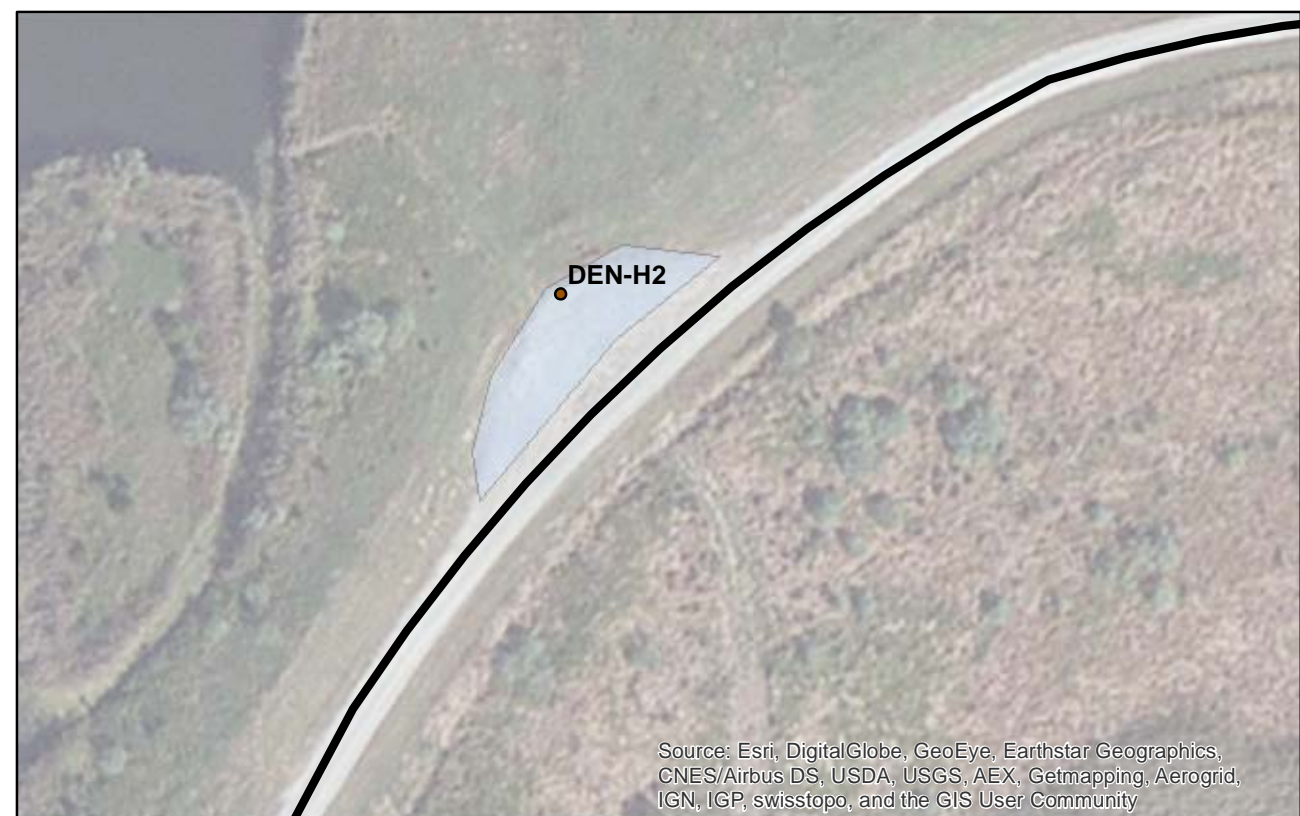
Source: Esri, DigitalGlobe, GeoEye, Earthstar Geographics, CNES/Airbus DS, USDA, USGS, AEX, Getmapping, Aerogrid, IGN, IGP, swisstopo, and the GIS User Community

DEN B4 Parking Area



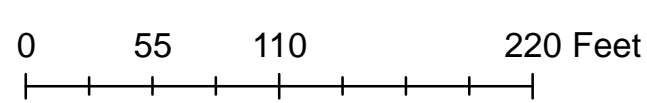
Source: Esri, DigitalGlobe, GeoEye, Earthstar Geographics, CNES/Airbus DS, USDA, USGS, AEX, Getmapping, Aerogrid, IGN, IGP, swisstopo, and the GIS User Community

DEN H1 Parking Area



Source: Esri, DigitalGlobe, GeoEye, Earthstar Geographics, CNES/Airbus DS, USDA, USGS, AEX, Getmapping, Aerogrid, IGN, IGP, swisstopo, and the GIS User Community

DEN H2 Parking Area



# Parking Areas - Denmark Area

Contract 46437  
 PYRAMID STATE PARK  
 PERRY COUNTY  
 Section PARK ROADS 2017-05  
 SHEET 16 OF 17





GAL B1 Parking Area



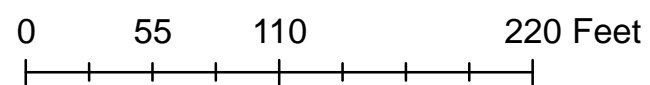
GAL B2 Parking Area



GAL B3 Parking Area



GAL H1 Parking Area



# Parking Areas - Galum Area

Contract 46437  
 PYRAMID STATE PARK  
 PERRY COUNTY  
 Section PARK ROADS 2017-05  
 SHEET 17 OF 17