

STATE OF ILLINOIS

DEPARTMENT OF TRANSPORTATION

**PROPOSED
HIGHWAY PLANS**

**FAP ROUTE 318 (IL 6)
SECTION 72[6;6-1;7(2,3);7]SR
TYPE of IMPROVEMENT: CONTRACT MAINTENANCE
PEORIA COUNTY**

| F.A.P. RTE. | SECTION | COUNTY | TOTAL SHEETS | SHEET NO. |
|-------------|----------------------|----------|--------------------|-----------|
| 318 | 72[6;6-1;7(2,3);7]SR | PEORIA | 8 | 1 |
| | | ILLINOIS | CONTRACT NO. 68D52 | |

INDEX OF SHEETS

- 1 COVER SHEET
- 2 GENERAL NOTES /COMMITMENTS /PROJECT SPECIFIC NOTES
- 3 SUMMARY OF QUANTITIES
- 4 LINE DIAGRAM
- 5 TYPICAL SECTIONS
- 6-7 SCHEDULE OF QUANTITIES
- 8 DISTRICT STANDARDS

HIGHWAY STANDARDS:

- 701101-05
- 701400-09
- 701406-11
- 701411-09
- 701428-01
- 701901-06

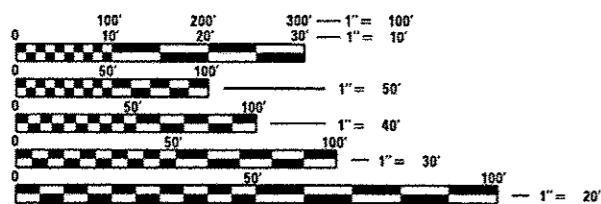
DISTRICT STANDARDS:

440001

IL 6: **FREEWAY**
ADT = 22,700 (2015)
SU = 7.05% (2015)
MU = 4.63% (2015)

IL 6 STA. EQUATION:
STA. 1012+94.57 (BK)
STA. 8+52.19 (AH)

BRIDGE OMMISION: RADNOR RD.
NB SN 072-0145
SB SN 072-0144
STA. 981+58 TO STA. 982+51



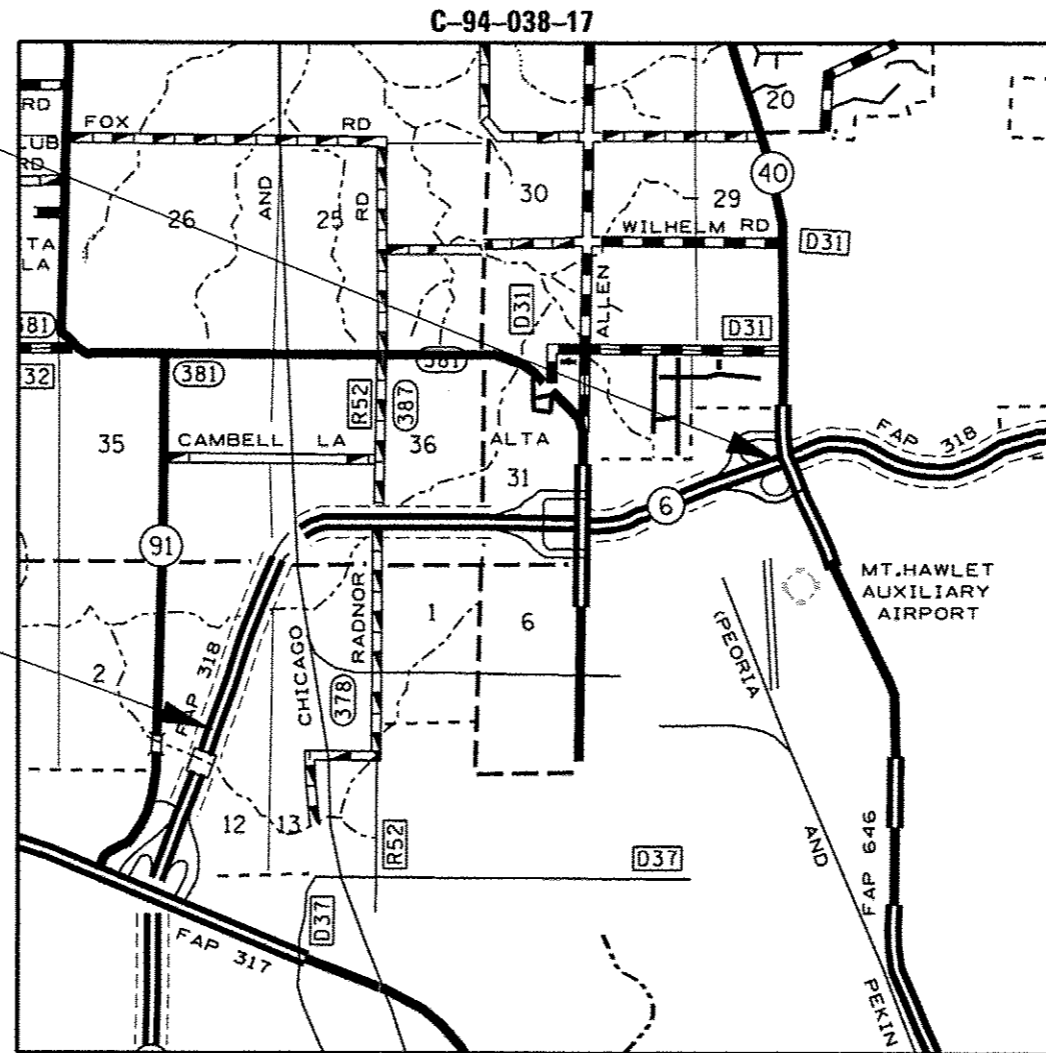
FULL SIZE PLANS HAVE BEEN PREPARED USING STANDARD ENGINEERING SCALES. REDUCED SIZED PLANS WILL NOT CONFORM TO STANDARD SCALES. IN MAKING MEASUREMENTS ON REDUCED PLANS, THE ABOVE SCALES MAY BE USED.

J.U.L.I.E.
JOINT UTILITY LOCATION INFORMATION FOR EXCAVATION
1-800-892-0123
OR 811

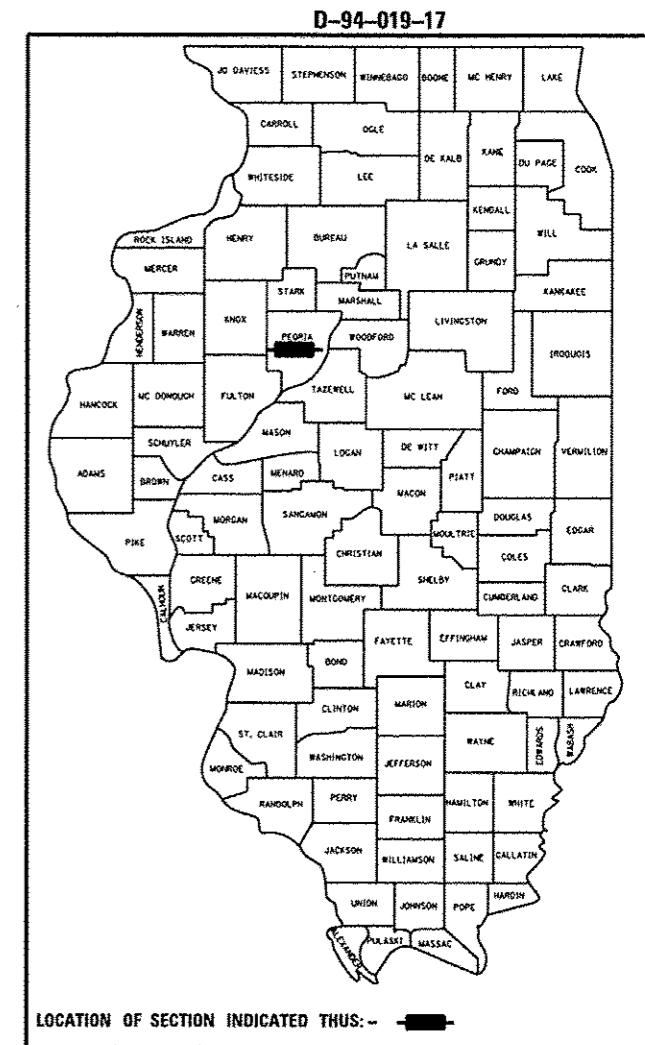
PROJECT ENGINEER: CHRISTOPHER MAUSHARD 309-671-3453
PROJECT MANAGER: SOBHI LABABIDI/RAY SAMARA 309-6713460
CATALOG NO. 035450-00D
CONTRACT NO. 68D52

PROJECT BEGINS:
STA. 880 + 00

PROJECT ENDS:
NB STA. 19 + 35
SB STA. 20 + 04



GROSS LENGTH = 14,446.38 FT. = 2.7360 MILE
NET LENGTH = 14,389.38 FT. = 2.725 MILE



PROJECT DESCRIPTION:

SHOULDER REPAIR ON IL 6 FROM 0.7 NORTH OF HOERR'S POND TO IL 40 (KNOXVILLE) INTERCHANGE IN PEORIA

STATE OF ILLINOIS
DEPARTMENT OF TRANSPORTATION

SUBMITTED February 16, 2017
Paul A. James REGION THREE ENGINEER

Mar 24, 2017
Maureen M. Addis, P.E. ENGINEER OF DESIGN AND ENVIRONMENT

Mar 24, 2017
Maureen M. Addis, P.E. DIRECTOR OF PROGRAM DEVELOPMENT

PRINTED BY THE AUTHORITY
OF THE STATE OF ILLINOIS

COMMITMENTS

Commitments are not to be altered without the written approval of all parties to which the commitment was made.

No Commitments have been made for this project.

ENVIRONMENTAL REVIEWS

Prior to the use of any proposed borrow areas, use areas (temporary access roads, detours, run-arounds, etc.) and/or waste areas, the Contractor shall file the required environmental resource request surveys according to Section 107.22 of the Standard Specifications. These surveys are required in order for the Department to conduct cultural and biological resource surveys for the proposed site.

Prior to any waste materials being removed from the construction site the required environmental resource surveys will need to be obtained and filed by the Contractor. Excess waste products removed from the construction site shall be disposed of as required in Section 202.03 of the Standard Specifications.

Any protruding metal bars shall be removed prior to the disposal of broken concrete at approved disposal sites.

The required environmental resource documentation shall include the following:

- * BDE Form 2289 (Environmental Survey Request)
- * A location map showing the size limits and location of the use area
- * Signed property owner agreement form-D4 PI0100
- * Color photographs depicting the use area
- * Borrow Area Entry Agreement form-D4 PI0101

Please note that a minimum of two weeks shall be allowed for the District to obtain the required environmental clearances.

HOT-MIX ASPHALT MIXTURE REQUIREMENTS:

| | |
|--|-------------|
| Mixture Use(s): | Shoulders |
| AC/PG: | PG 64-22 |
| Design Air Voids: | 4.0% @ N=50 |
| Mixture Composition: (Mixture Gradation) | IL 9.5 |
| Friction Aggregate: | Mix C |
| Quality Management Program: | QC QA |

Note: 1) Individual lift thickness of each mix type will be no less than 3 times nominal maximum aggregate size and no more than 6 times nominal maximum aggregate size, unless otherwise approved by the Engineer.

2) For design purposes, mixture weight for all mixes is determined to be 112.0 lb/s.y/in., unless otherwise noted.

PROJECT SPECIFIC NOTES

- In addition to priming the milled shoulders; the vertical face at the edge of pavement and the vertical face of the edge of the remaining shoulder shall be thoroughly tacked (primed) by means of dedicated spray nozzle, mounted at 45 degree, aimed toward the faces. The extra HMA prime coat shall be paid for at the contract unit price per TON for "POLYMERIZED BITUMINOUS MATERIALS (TACK COAT)"
- Due to the poor condition of the existing inside shoulders; it shall be milled and filled prior to starting work on the outside shoulders



PROJECT BEGINS
STA. 880+00

ALLEN RD. INTERCHANGE
SN 072-0146
STA 929+03.18

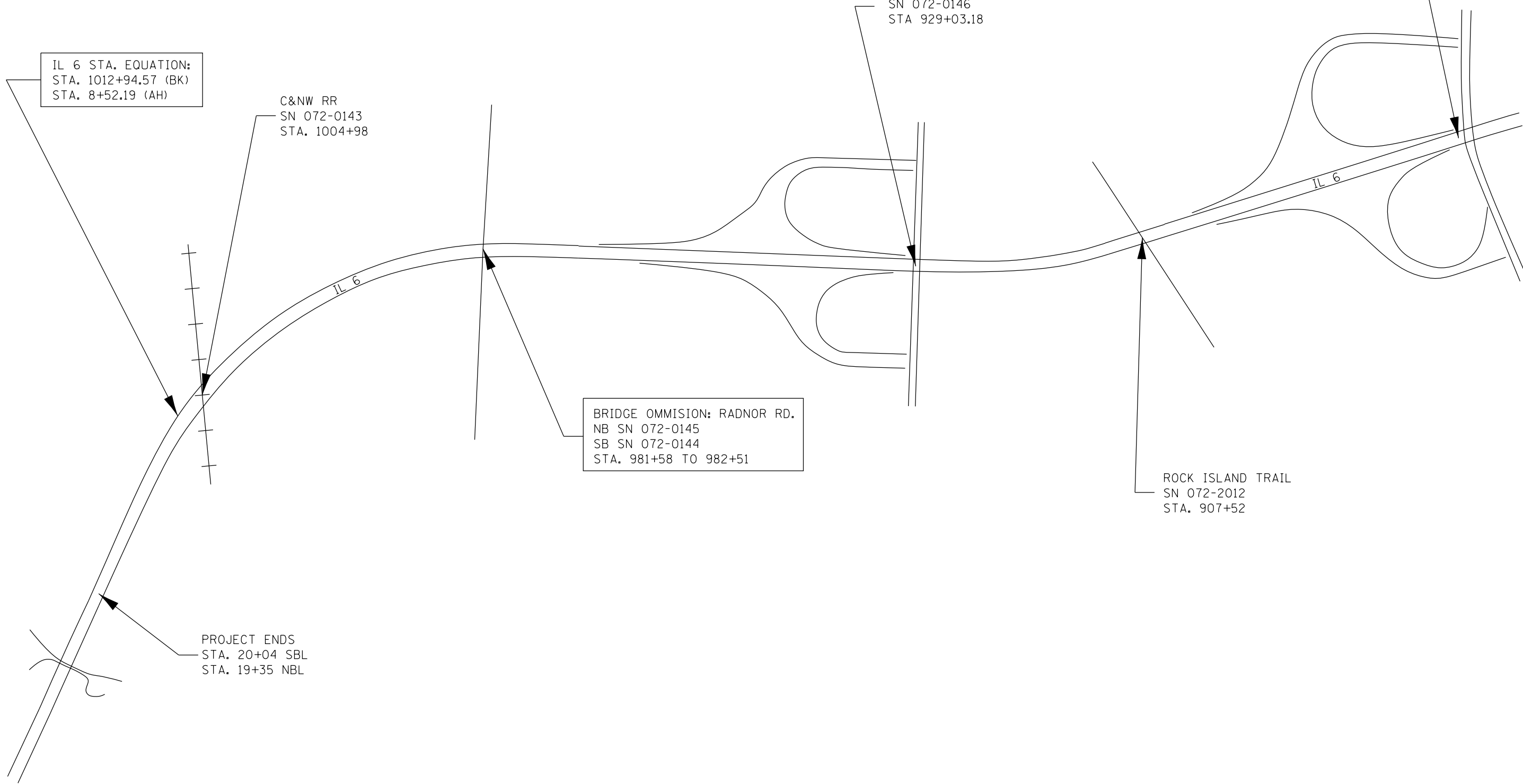
IL 6 STA. EQUATION:
STA. 1012+94.57 (BK)
STA. 8+52.19 (AH)

C&NW RR
SN 072-0143
STA. 1004+98

BRIDGE OMMISION: RADNOR RD.
NB SN 072-0145
SB SN 072-0144
STA. 981+58 TO 982+51

ROCK ISLAND TRAIL
SN 072-2012
STA. 907+52

PROJECT ENDS
STA. 20+04 SBL
STA. 19+35 NBL

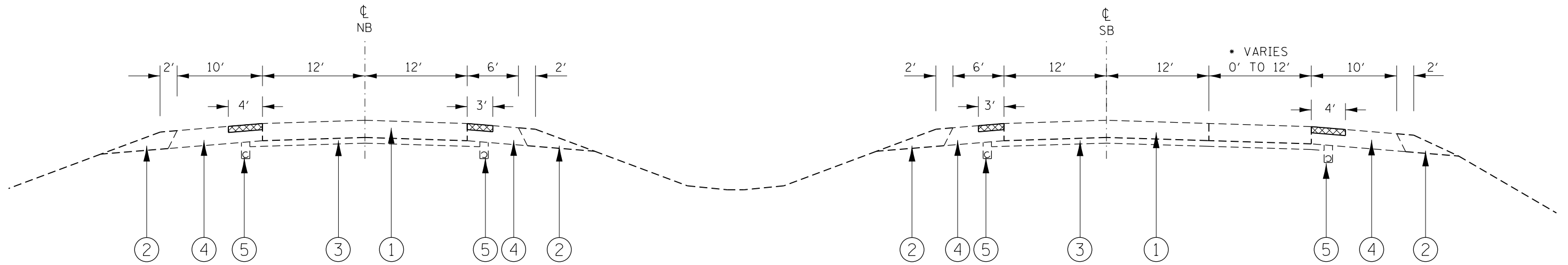


| | | | |
|-------------------------------|------------------------------|------------|-----------|
| FILE NAME = Cover_line.dgn | USER NAME = lababidism | DESIGNED - | REVISED - |
| Default | PLOT SCALE = 100.0000' / in. | DRAWN - | REVISED - |
| | PLOT DATE = 2/16/2017 | CHECKED - | REVISED - |
| | | DATE - | REVISED - |

**STATE OF ILLINOIS
DEPARTMENT OF TRANSPORTATION**

| | | | |
|---------------------|-------|----|---------|
| LINE DIAGRAM | | | |
| SCALE: | SHEET | OF | SHEETS |
| | STA. | | TO STA. |

| F.A.P. RTE. | SECTION | COUNTY | TOTAL SHEETS | SHEET NO. |
|---------------------------|---------------------|--------|--------------|-----------|
| 318 | 72[6:6-1;7[2,3;7]SR | PEORIA | 8 | 4 |
| CONTRACT NO. 68D52 | | | | |
| ILLINOIS FED. AID PROJECT | | | | |



IL 6

STA. 880+00 TO STA. 20+04 (SB)
 STA. 880+00 TO STA. 19+35 (NB)

- ① EXISTING CONTINUOUSLY REINFORCED PCC PAVEMENT, 10 1/2" (7/8" LONGITUDINAL BARS)
- ② EXISTING AGGREGATE SHOULDER
- ③ EXISTING STABILIZED SUB-BASE, 4"
- ④ EXISTING HMA SHOULDER
- ⑤ EXISTING SUB-SURFACE DRAINS

▨ PROPOSED HMA SURFACE REMOVAL 3" / PROPOSED HMA SHOULDER

* TRUCK CLIMBING LANE
 12' - STA 875+87 TO 910+00
 TRANSITION 12' TO 0' STA 910+00 TO 915+50

NOT TO SCALE

| | | | | | | | | | | | | |
|-------------------------------|------------------------------|------------|-----------|---|------------------------|-----------|------|-------------|---------------------|--------|--------------|-----------|
| FILE NAME = Cover_line.dgn | USER NAME = lababidism | DESIGNED - | REVISED - | STATE OF ILLINOIS DEPARTMENT OF TRANSPORTATION | TYPICAL SECTION | | | F.A.P. RTE. | SECTION | COUNTY | TOTAL SHEETS | SHEET NO. |
| | PLOT SCALE = 100.0000' / in. | CHECKED - | REVISED - | | | | | 318 | 72[6:6-1;7[2,3;7]5R | PEORIA | 8 | 5 |
| PLOT DATE = 2/16/2017 | DATE - | REVISED - | SCALE: | | SHEET NO. | OF SHEETS | STA. | TO STA. | CONTRACT NO. 68D52 | | | |
| ILLINOIS FED. AID PROJECT | | | | | | | | | | | | |

RESURFACING – SHOULDER

| | LOCATION | | LENGTH | REMOVAL WIDTH | | AREA | | HOT-MIX ASPHALT SURFACE REMOVAL, 3" | | HOT – MIX ASPHALT SHOULDERS | | POLYMERIZED BITUMINOUS MATERIALS (TACK COAT)* | | | |
|-------------------------|---|--------------|----------------|---------------|----|--------|----------|-------------------------------------|------------------|-----------------------------|-----------------|---|------------------|----------|----|
| | | | | LT | RT | LT | RT | LT | RT | LT | RT | LT | RT | | |
| | | | | STA. | TO | STA. | FT | FT | SQ YD | SQ YD | SQ YD | SQ YD | TON | TON | LB |
| NORTH BOUND LANE | STA. 880 + 00 | TO | STA. 895 + 39 | 1539 | 3 | 4 | 513.00 | 684.00 | 513.00 | 684.00 | 86.18 | 114.91 | 538.65 | 692.55 | |
| | STA. 895 + 39 | TO | STA. 897 + 39 | 200 | 3 | 0 | 66.67 | 0.00 | 66.67 | 0.00 | 11.20 | 0.00 | 70.00 | 0.00 | |
| | STA. 897 + 39 | TO | STA. 928 + 38 | 3099 | 3 | 4 | 1,033.00 | 1,377.33 | 1,033.00 | 1,377.33 | 173.54 | 231.39 | 1,084.65 | 1,394.55 | |
| | STA. 928 + 38 | TO | STA. 930 + 38 | 200 | 3 | 0 | 66.67 | 0.00 | 66.67 | 0.00 | 11.20 | 0.00 | 70.00 | 0.00 | |
| | STA. 930 + 38 | TO | STA. 948 + 00 | 1762 | 3 | 4 | 587.33 | 783.11 | 587.33 | 783.11 | 98.67 | 131.56 | 616.70 | 792.90 | |
| | STA. 948 + 00 | TO | STA. 950 + 00 | 200 | 3 | 0 | 66.67 | 0.00 | 66.67 | 0.00 | 11.20 | 0.00 | 70.00 | 0.00 | |
| | STA. 950 + 00 | TO | STA. 981 + 58 | 3158 | 3 | 4 | 1,052.67 | 1,403.56 | 1,052.67 | 1,403.56 | 176.85 | 235.80 | 1,105.30 | 1,421.10 | |
| | BRIDGE OMMISION STA. 981 + 58 TO STA. 982 + 51 | | | 93 | | | | | | | | | | | |
| | STA. 982 + 51 | TO | STA. 1012 + 95 | 3044 | 3 | 4 | 1,014.67 | 1,352.89 | 1,014.67 | 1,352.89 | 170.46 | 227.29 | 1,065.40 | 1,369.80 | |
| | STA. EQUATION: STA. 1012 + 94.57 (BK) = STA. 8 + 52.19 (AH) | | | | | | | | | | | | | | |
| STA. 08 + 52 | TO | STA. 19 + 35 | 1083 | 3 | 4 | 361.00 | 481.33 | 361.00 | 481.33 | 60.65 | 80.86 | 379.05 | 487.35 | | |
| SOUTH BOUND LANE | STA. 880 + 00 | TO | STA. 894 + 96 | 1496 | 4 | 3 | 664.89 | 498.67 | 664.89 | 498.67 | 111.70 | 83.78 | 673.20 | 523.60 | |
| | STA. 894 + 96 | TO | STA. 896 + 96 | 200 | 0 | 3 | 0.00 | 66.67 | 0.00 | 66.67 | 0.00 | 11.20 | 0.00 | 70.00 | |
| | STA. 896 + 96 | TO | STA. 928 + 35 | 3139 | 4 | 3 | 1,395.11 | 1,046.33 | 1,395.11 | 1,046.33 | 234.38 | 175.78 | 1,412.55 | 1,098.65 | |
| | STA. 928 + 35 | TO | STA. 930 + 35 | 200 | 0 | 3 | 0.00 | 66.67 | 0.00 | 66.67 | 0.00 | 11.20 | 0.00 | 70.00 | |
| | STA. 930 + 35 | TO | STA. 947 + 64 | 1729 | 4 | 3 | 768.44 | 576.33 | 768.44 | 576.33 | 129.10 | 96.82 | 778.05 | 605.15 | |
| | STA. 947 + 64 | TO | STA. 949 + 64 | 200 | 0 | 3 | 0.00 | 66.67 | 0.00 | 66.67 | 0.00 | 11.20 | 0.00 | 70.00 | |
| | STA. 949 + 64 | TO | STA. 981 + 58 | 3194 | 4 | 3 | 1,419.56 | 1,064.67 | 1,419.56 | 1,064.67 | 238.49 | 178.86 | 1,437.30 | 1,117.90 | |
| | BRIDGE OMMISION STA. 981 + 58 TO STA. 982 + 51 | | | 93 | | | | | | | | | | | |
| | STA. 982 + 51 | TO | STA. 1012 + 95 | 3044 | 4 | 3 | 1,352.89 | 1,014.67 | 1,352.89 | 1,014.67 | 227.29 | 170.46 | 1,369.80 | 1,065.40 | |
| | STA. EQUATION: STA. 1012 + 94.57 (BK) = STA. 8 + 52.19 (AH) | | | | | | | | | | | | | | |
| STA. 08 + 52 | TO | STA. 20 + 04 | 1152 | 4 | 3 | 512.00 | 384.00 | 512.00 | 384.00 | 86.02 | 64.51 | 518.40 | 403.20 | | |
| SUB-TOTAL | | | | | | | | 10,874.56 | 10,866.89 | 1,826.93 | 1,825.64 | 11,189.05 | 11,182.15 | | |
| TOTAL | | | | | | | | 21,741 | 3,653 | 22,371 | | | | | |

NOTE: LT AND RT ARE RELATED TO THE DIRECTION OF STATION INCREASE FOR BOTH NORTH AND SOUTH BOUND

* PRIME COAT RATE USED IS 0.1 LBSQ FT

| | | | | | | | | | | | | | |
|----------------------------|------------------------|------------|-----------|---|-------------------------------|-----------|----|--------|-------------|---------|--------|--------------|-----------|
| FILE NAME = Cover_line.dgn | USER NAME = lababidism | DESIGNED - | REVISED - | STATE OF ILLINOIS DEPARTMENT OF TRANSPORTATION | SCHEDULE OF QUANTITIES | | | | F.A.P. RTE. | SECTION | COUNTY | TOTAL SHEETS | SHEET NO. |
| | | DRAWN - | REVISED - | | SCALE: | SHEET NO. | OF | SHEETS | STA. | TO STA. | PEORIA | 8 | 6 |
| | | CHECKED - | REVISED - | | CONTRACT NO. 68D52 | | | | | | | | |
| | | DATE - | REVISED - | | ILLINOIS FED. AID PROJECT | | | | | | | | |

PAINT PAVEMENT MARKING

| | LOCATION | | | LENGTH | LT EDGE LINE SOLID | RT EDGE LINE SOLID | |
|-------------------------|---|--------------|----------------|---------------|-----------------------------|-----------------------------|----|
| | | | | | YELLOW | WHITE | |
| | 4" | 4" | | | | | |
| | STA. | TO | STA. | FT | FT | FT | |
| NORTH BOUND LANE | STA. 880 + 00 | TO | STA. 895 + 39 | 1539 | 1539 | 1539 | |
| | STA. 895 + 39 | TO | STA. 897 + 39 | 200 | 200 | 0 | |
| | STA. 897 + 39 | TO | STA. 928 + 38 | 3099 | 3099 | 3099 | |
| | STA. 928 + 38 | TO | STA. 930 + 38 | 200 | 200 | 0 | |
| | STA. 930 + 38 | TO | STA. 948 + 00 | 1762 | 1762 | 1762 | |
| | STA. 948 + 00 | TO | STA. 950 + 00 | 200 | 200 | 0 | |
| | STA. 950 + 00 | TO | STA. 981 + 58 | 3158 | 3158 | 3158 | |
| | BRIDGE OMMISION STA. 981 + 58 TO STA. 982 + 51 | | | | 93 | 93 | 93 |
| | STA. 982 + 51 | TO | STA. 1012 + 95 | 3044 | 3044 | 3044 | |
| | STA. EQUATION: STA. 1012 + 94.57 (BK) = STA. 8 + 52.19 (AH) | | | | | | |
| STA. 08 + 52 | TO | STA. 19 + 35 | 1083 | 1083 | 1083 | | |
| SOUTH BOUND LANE | STA. 880 + 00 | TO | STA. 894 + 96 | 1496 | 1496 | 1496 | |
| | STA. 894 + 96 | TO | STA. 896 + 96 | 200 | 0 | 200 | |
| | STA. 896 + 96 | TO | STA. 928 + 35 | 3139 | 3139 | 3139 | |
| | STA. 928 + 35 | TO | STA. 930 + 35 | 200 | 0 | 200 | |
| | STA. 930 + 35 | TO | STA. 947 + 64 | 1729 | 1729 | 1729 | |
| | STA. 947 + 64 | TO | STA. 949 + 64 | 200 | 0 | 200 | |
| | STA. 949 + 64 | TO | STA. 981 + 58 | 3194 | 3194 | 3194 | |
| | BRIDGE OMMISION STA. 981 + 58 TO STA. 982 + 51 | | | | 93 | 93 | 93 |
| | STA. 982 + 51 | TO | STA. 1012 + 95 | 3044 | 3044 | 3044 | |
| | STA. EQUATION: STA. 1012 + 94.57 (BK) = STA. 8 + 52.19 (AH) | | | | | | |
| STA. 08 + 52 | TO | STA. 20 + 04 | 1152 | 1152 | 1152 | | |
| TOTAL | | | | 56,450 | | | |

| LOCATION | MOBILIZATION |
|--------------|--------------|
| | L SUM |
| JOBSITE | 1 |
| TOTAL | 1 |

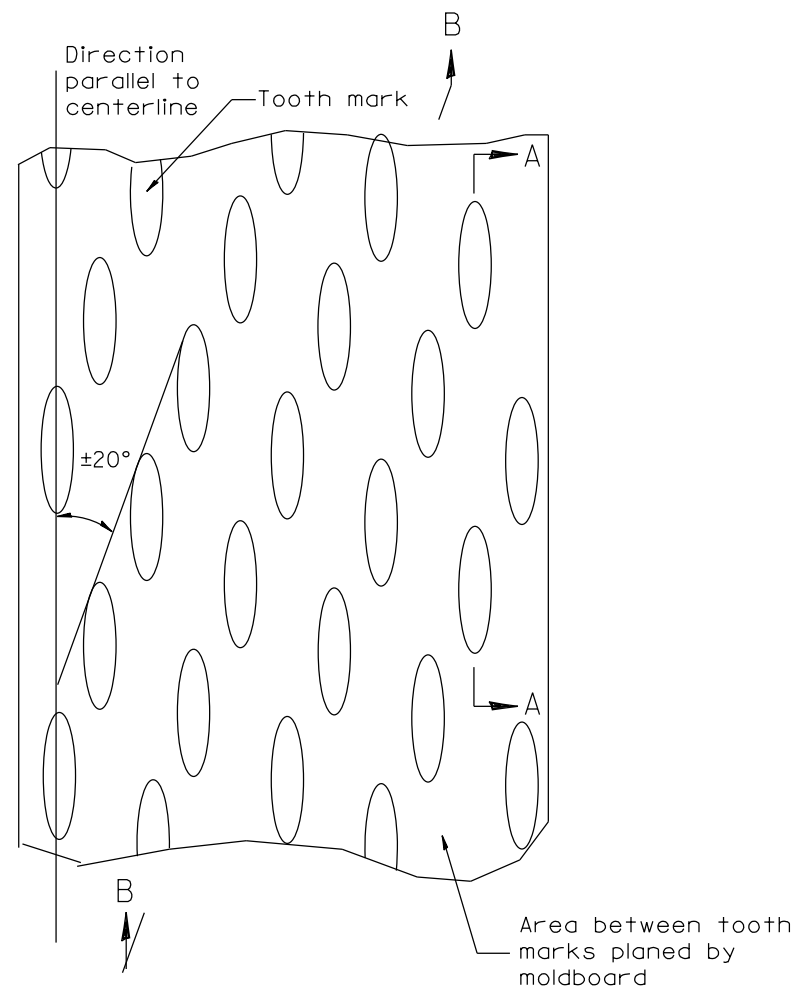
| LOCATION | RAILROAD PROTECTIVE LIABILITY INSURANCE |
|--------------|---|
| | L SUM |
| JOBSITE | 1 |
| TOTAL | 1 |

| LOCATION | CHANGEABLE MESSAGE SIGN |
|-------------------------------------|-------------------------|
| | CAL DAY |
| JOBSITE (2 signs at 7 days each) | 14 |
| TOTAL | 14 |

| LOCATION | SPEED DISPLAY TRAILER |
|--------------|-----------------------|
| | CAL MO |
| JOBSITE | 0.5 |
| TOTAL | 0.5 |

| LOCATION | TRAFFIC CONTROL AND PROTECTION, STANDARD 701406 |
|--------------|---|
| | L SUM |
| JOBSITE | 1 |
| TOTAL | 1 |

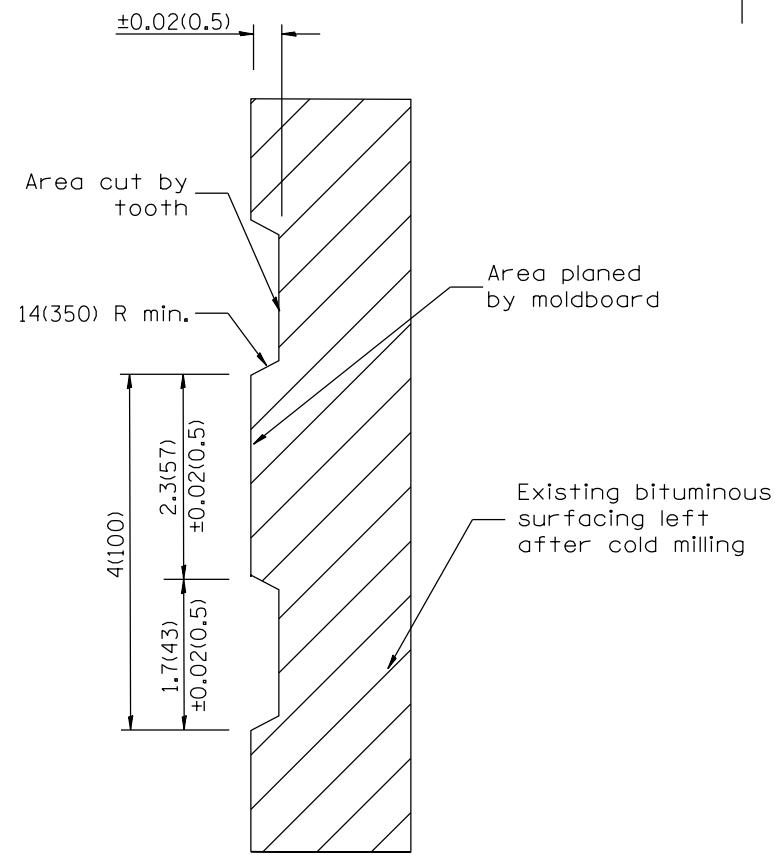
| LOCATION | TRAFFIC CONTROL AND PROTECTION, STANDARD 701411 |
|--------------|---|
| | EACH |
| JOBSITE | 7 |
| TOTAL | 7 |



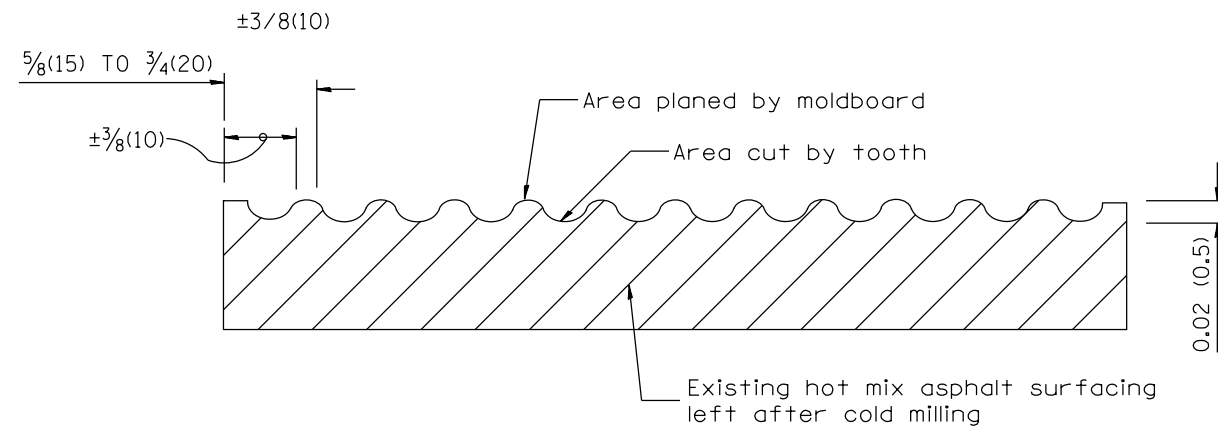
PLAN

General notes:

1. Coldmilling shall consist of two processes: Cutting with carbide teeth mounted on a rotating drum, and planing with a moldboard mounted immediately behind the cutting drum.
2. Other similar patterns will be acceptable if they consist of a smooth, flat, planed surface interspersed with a pattern of discontinuous longitudinal striations.



SECTION A-A



SECTION B-B PROJECTED PERPENDICULAR TO CENTERLINE

DESIGNER NOTES:
1. INCLUDE DISTRICT SPECIAL PROVISION, IF APPLICABLE.

All dimensions are in inches (millimeters) unless otherwise noted.

| | | |
|----------|--------------------------------------|------|
| 01-01-97 | RENUM. C-104.01, NEW REVISION BOX | T.P. |
| 04-20-98 | REMOVED MILLING DETAIL FROM STANDARD | J.A. |
| 09-08-98 | CORRECT NOTE LEADER PLACEMENT | R.W. |
| 10-16-06 | REVISED TO 2007 SPEC. | M.A. |

STATE OF ILLINOIS
DEPARTMENT OF TRANSPORTATION

HOT MIX ASPHALT SURFACE REMOVAL (COLD MILLING)

NOT TO SCALE

CADD STD. 440001-D4

| F.A.P. RTE. | SECTION | COUNTY | TOTAL SHEETS | SHEET NO. |
|---|----------------------|--------|--------------------|-----------|
| 318 | 72[6:6-1;7(2,3);7]SR | PEORIA | 8 | 8 |
| FED. ROAD DIST. NO. ILLINOIS FED. AID PROJECT | | | CONTRACT NO. 68D52 | |