

04-28-2017 LETTING ITEM 115

STATE OF ILLINOIS  
DEPARTMENT OF TRANSPORTATION

F.A.U. RTE.	SECTION	COUNTY	TOTAL SHEETS	SHEET NO.
7825	(K-15d) HF	ADAMS	10	1
FED. ROAD DIST. NO. 6	ILLINOIS	CONTRACT NO. 72J80		

INDEX OF SHEETS

SHEET NO.	DESCRIPTION
1	COVER SHEET
2	SUMMARY OF QUANTITIES
3	CEDAR CREEK GRADING PLAN
4-10	STRUCTURE PLANS - SN 001-0034

STANDARDS

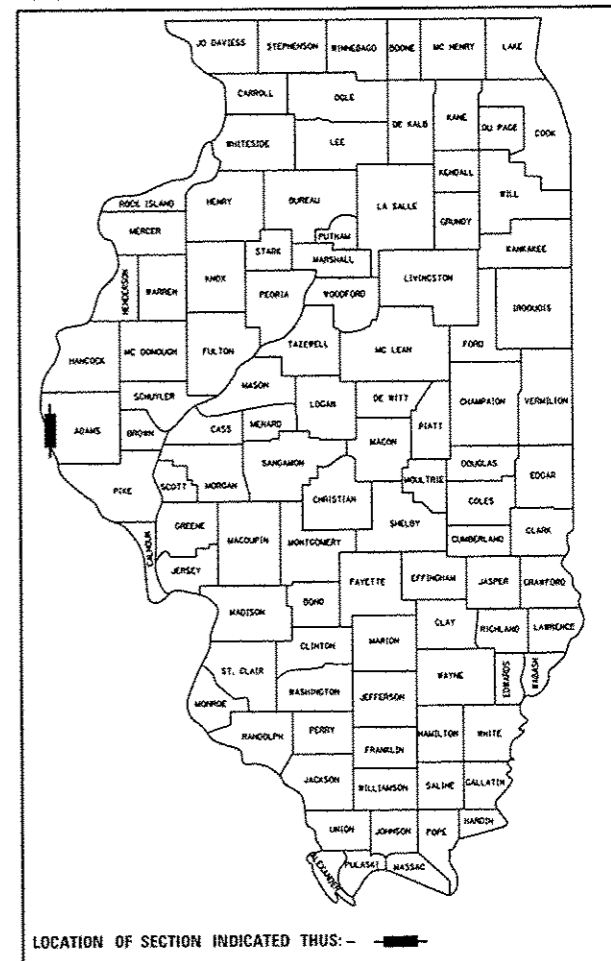
STANDARD NOS.
000001-06 001006

**PROPOSED  
HIGHWAY PLANS**

FAU ROUTE 7825 (IL 96/North 24th Street)  
SECTION (K-15d) HF  
PROJECT STP-7825(007)  
BRIDGE FABRICATION (3-SIDED)  
ADAMS COUNTY

C-96-044-17  
FABRICATION PLANS FOR PROPOSED S.N. 001-0034

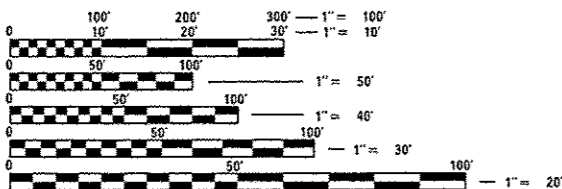
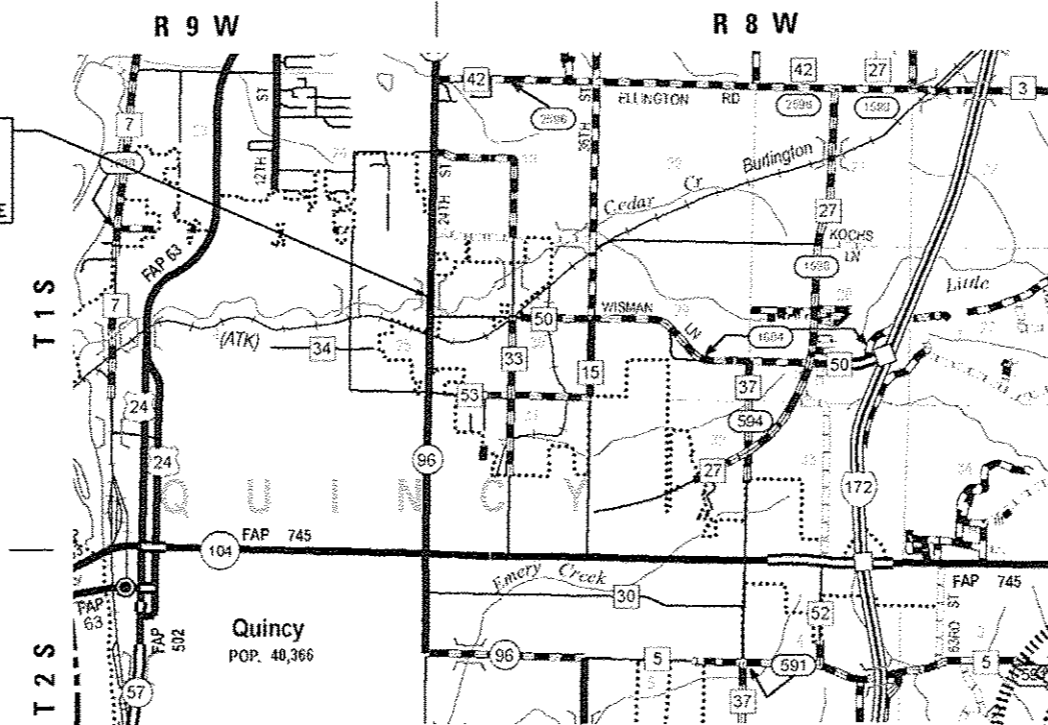
D-96-044-17



LOCATION OF SECTION INDICATED THUS: -

DESIGN DESIGNATION:  
FAU 7825  
MINOR ARTERIAL (URBAN)  
ADT = 5,900 (2015)  
SU = 4.2%  
NU = 7.2%

PR S.N. 001-0034  
IL 96 OVER CEDAR CREEK  
STA. 29+86.50 SKEW = 10°  
FURNISH, STORAGE & DELIVERY OF  
48'X12'X86' PRECAST 3 SIDED STRUCTURE



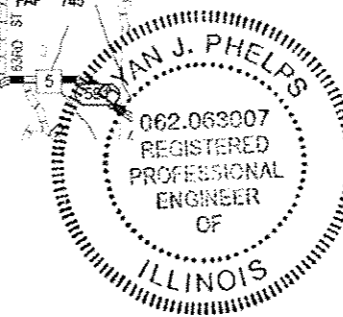
FULL SIZE PLANS HAVE BEEN PREPARED USING STANDARD ENGINEERING SCALES. REDUCED SIZED PLANS WILL NOT CONFORM TO STANDARD SCALES. IN MAKING MEASUREMENTS ON REDUCED PLANS, THE ABOVE SCALES MAY BE USED.

J.U.L.I.E.  
JOINT UTILITY LOCATION INFORMATION FOR EXCAVATION  
1-800-892-0123  
OR 811

PROJECT ENGINEER: JAY EDWARDS (217) 785-0597  
TEAM MANAGER: FRANK SHIMKUS (217) 785-9102

CONTRACT NO. 72J80

LOCATION MAP  
SCALE: 1" = 5000'



*RJP* 2-10-17  
RYAN J. PHELPS DATE  
REGISTERED PROFESSIONAL ENGINEER  
STATE OF ILLINOIS NO. 062-063007  
LICENSE EXPIRES NOVEMBER 30, 2017

STATE OF ILLINOIS  
DEPARTMENT OF TRANSPORTATION  
DIVISION OF HIGHWAYS

SUBMITTED February 14, 2017  
*Jerry M. South* REGIONAL ENGINEER  
Mar 24 2017  
*Muameen M. Addis* ENGINEER OF DESIGN AND ENVIRONMENT  
Mar 24 2017  
*David A. Kelly* DIRECTOR OF PROGRAM DEVELOPMENT

PLANS PREPARED BY:  
**KLINGNER & ASSOCIATES, P.C.**  
Engineers • Architects • Surveyors  
806 North 21st Street, Quincy, IL 62422-3803  
4518 Perry Street, Hannibal, MO 63450-2202  
108 N. 4th Street, Suite 100, Burlington, IL 62590-1505  
11 North Prairie Street, Golconda, IL 62526-1001  
Internet Address: www.klingner.com  
STATE OF ILLINOIS DESIGN FIRM # 1842738

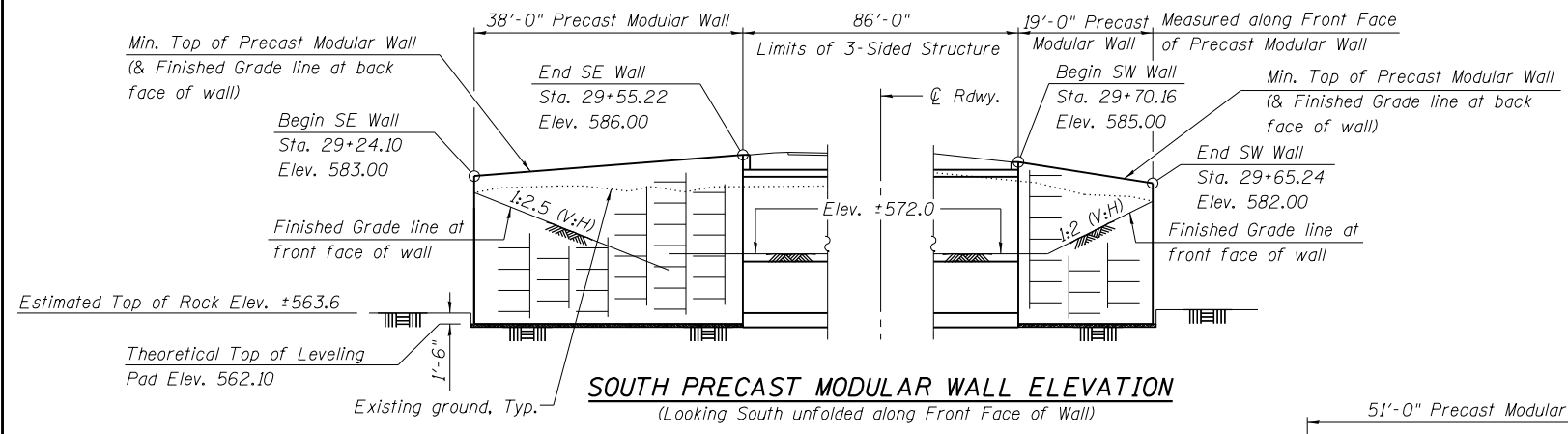
PRINTED BY THE AUTHORITY  
OF THE STATE OF ILLINOIS



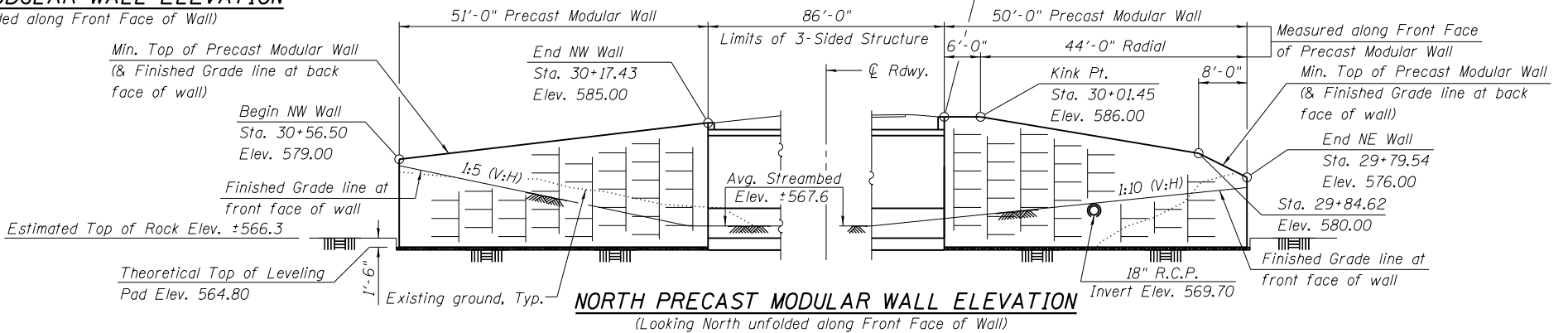




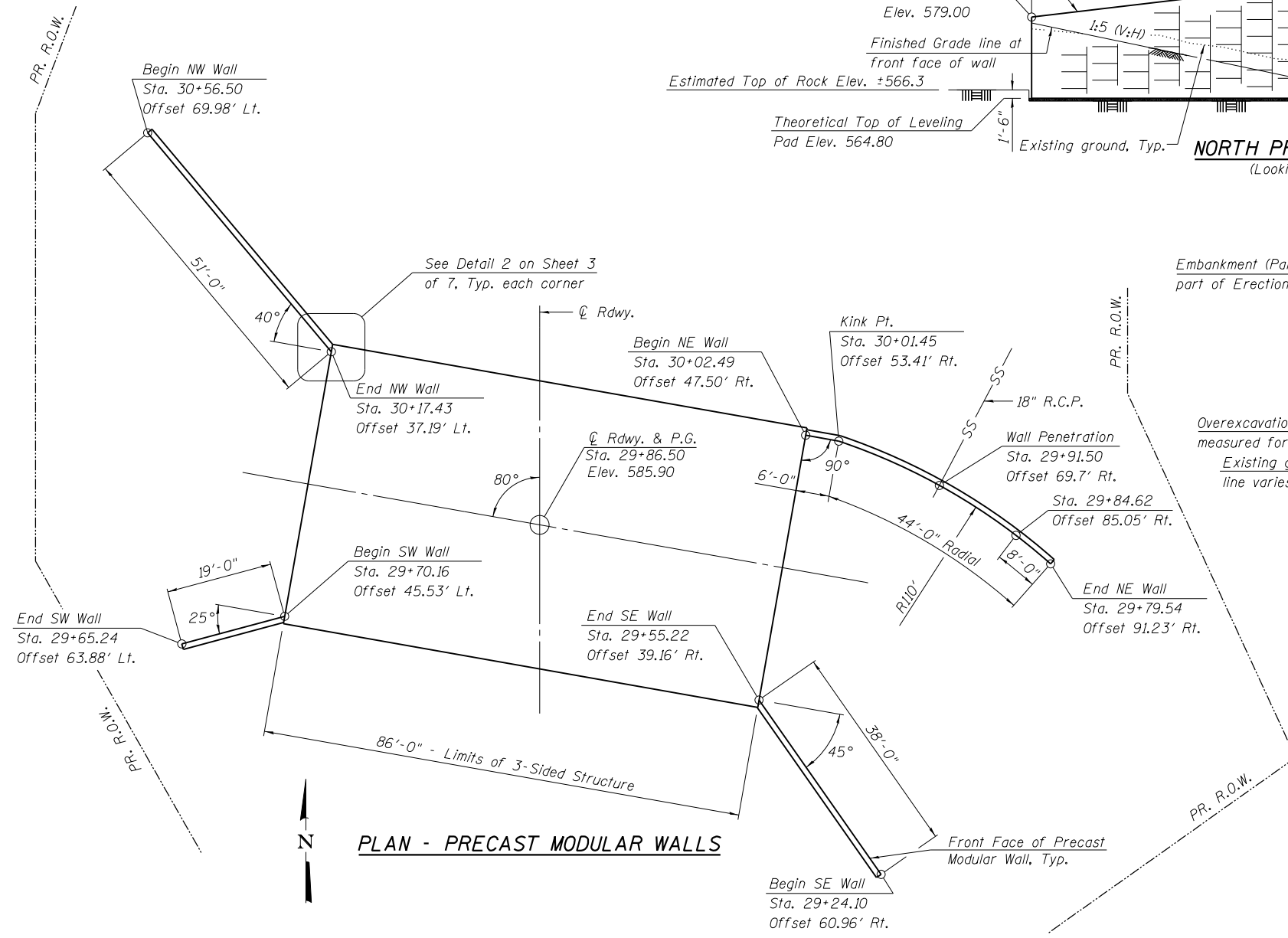
THIS SHEET FOR INFORMATION ONLY



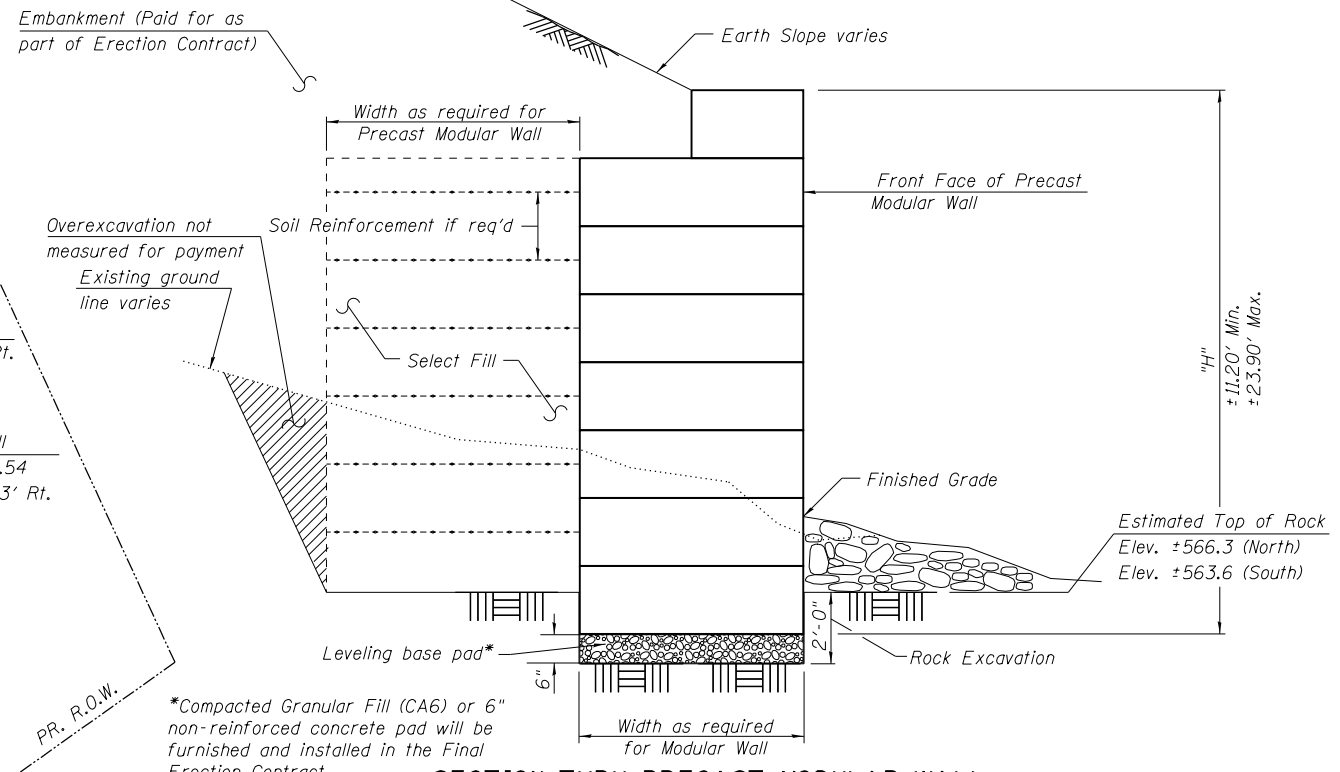
**SOUTH PRECAST MODULAR WALL ELEVATION**  
(Looking South unfolded along Front Face of Wall)



**NORTH PRECAST MODULAR WALL ELEVATION**  
(Looking North unfolded along Front Face of Wall)



**PLAN - PRECAST MODULAR WALLS**



**SECTION THRU PRECAST MODULAR WALL**

Notes:  
The cost of furnishing the soil reinforcement, if required, shall be included in the cost of Furnishing Precast Modular Retaining Wall.  
The cost of furnishing and installing the select fill, if required, will be included in the Erection Contract.

G:\101\100276\NO 4 - IL 95 Cedar Creek Bridge Plans\Material Only Contract Plans - 3-Sided Structure Modular Wall Details.dgn

**KLINGNER & ASSOCIATES, P.C.**  
Engineers - Architects - Surveyors

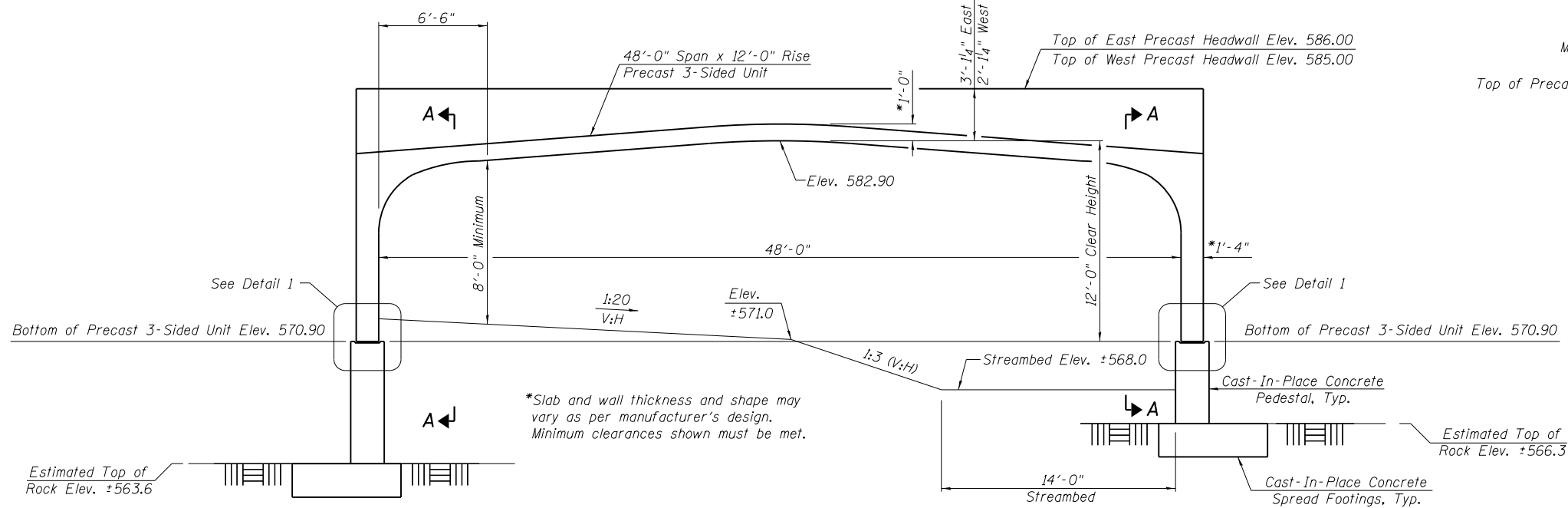
USER NAME = r.jp	DESIGNED - RJP	REVISED -
PLOT SCALE = 26.2417' / 1" =	CHECKED - ADL	REVISED -
PLOT DATE = 2/10/2017	DRAWN - RJP	REVISED -
	CHECKED - ADL	REVISED -

STATE OF ILLINOIS  
DEPARTMENT OF TRANSPORTATION

PRECAST MODULAR WALL DETAILS  
STRUCTURE NO. 001-0034  
SHEET NO. 2 OF 7 SHEETS

F.A.P. RTE. 7825	SECTION (K-15d) HF	COUNTY ADAMS	TOTAL SHEETS 10	SHEET NO. 5
CONTRACT NO. 72J80				
ILLINOIS FED. AID PROJECT				

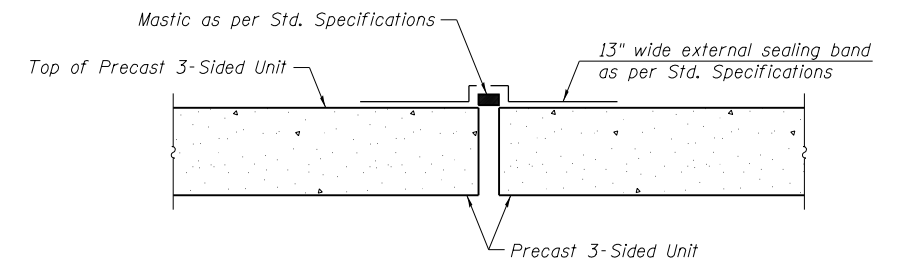
Klingner & Associates P.C.



**THREE-SIDED STRUCTURE ELEVATION**  
(At Rt. L's to structure)

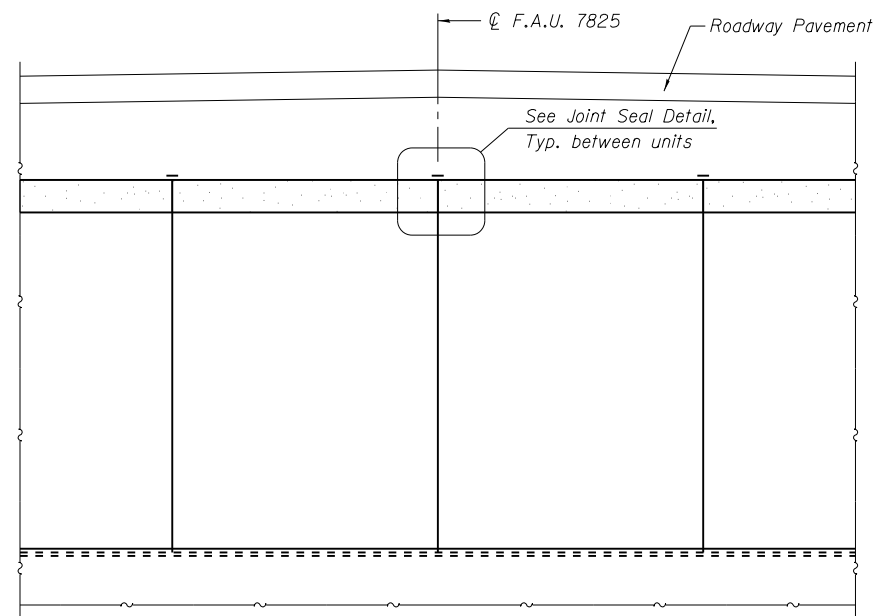
**BILL OF MATERIAL**

ITEM	UNIT	TOTAL
Furnishing Three-Sided Precast Concrete Structures 48'x12'	Foot	86

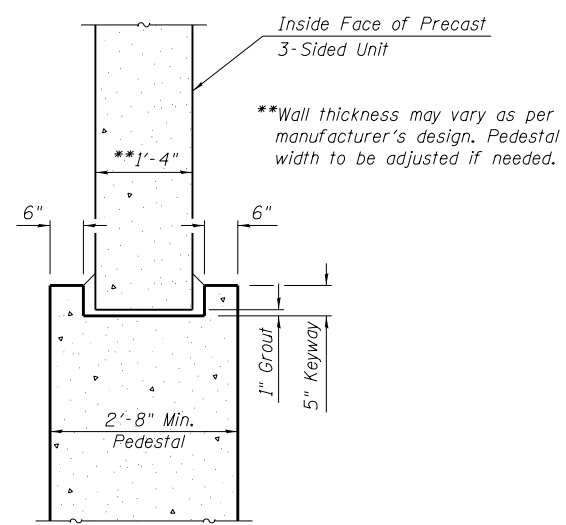


**JOINT SEAL DETAIL**

Note:  
Joint Seal is on top and both sides of each precast unit. Cost of furnishing mastic and sealing band shall be included with Furnishing Three-Sided Precast Concrete Structures. Installation will be included in the cost of Erecting Three-Sided Precast Concrete Structures in Erection Contract.

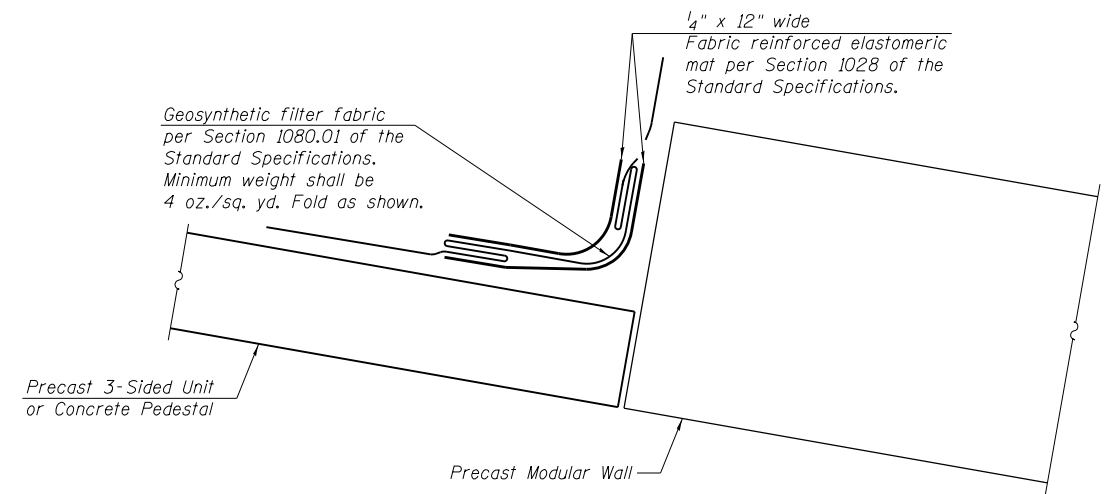


**SECTION A-A**



**DETAIL 1**

(Detail For Information Only)



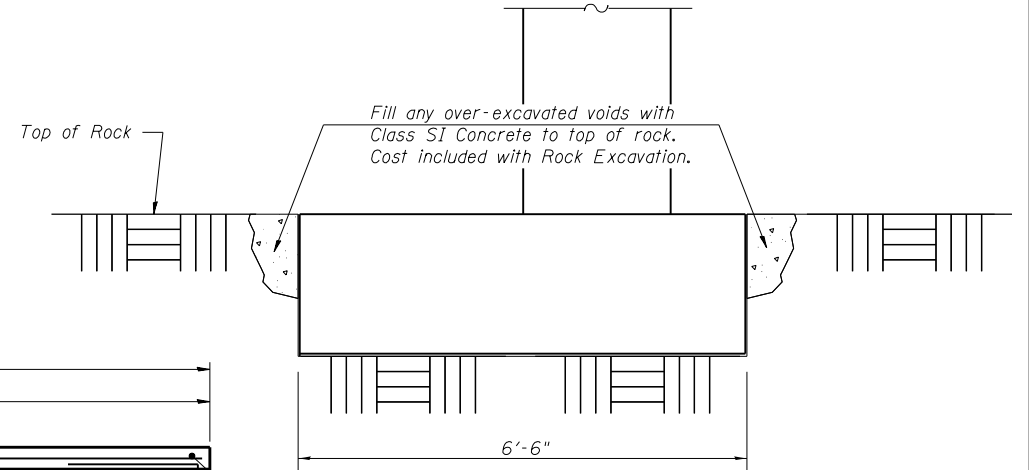
**DETAIL 2**

Note:  
The cost of furnishing and installing the elastomeric mat and filter fabric shall be included in the cost of Erecting Three-Sided Precast Concrete Structures in Erection Contract.

D:\107\1007\25\10 4 - IL 96 Cedar-Creek\Bridge Plans\Material Only\Contract Plans - 3-Sided Structures\Three-Sided Detail.dwg

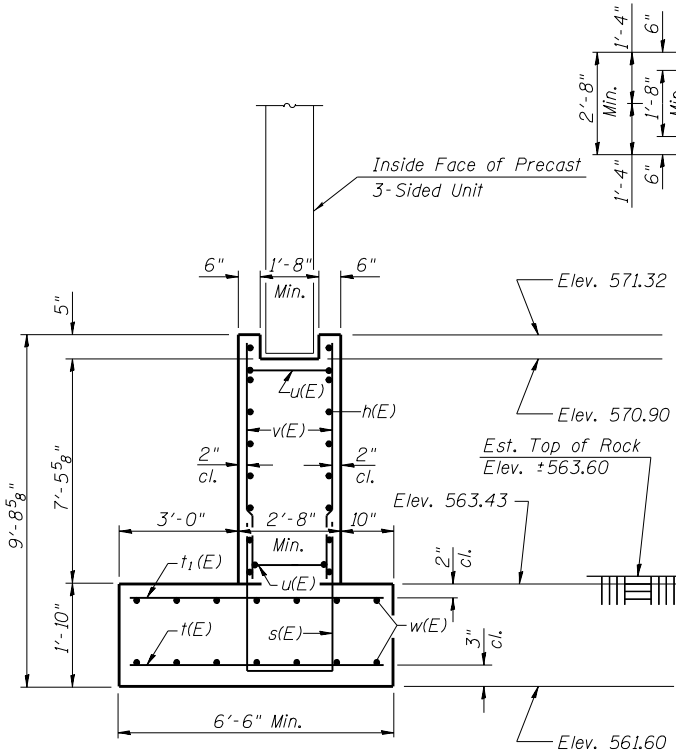
THIS SHEET FOR INFORMATION ONLY

Notes:  
 Precast footing option will not be allowed for this contract.  
 Bars indicated thus 7x3-#5 etc. indicates 7 lines of bars with 3 lengths per line.  
 The bottom of footing elevations shall be adjusted to ensure a minimum embedment of 22 inches in non-weathered rock. The rock excavation shall be made with near-vertical sides at the plan dimensions to allow the sides and base of the embedded portion of the footing to be cast against undisturbed rock surfaces.  
 Pedestal width to be adjusted if needed to accommodate Three-Sided Structure during Erection Contract.

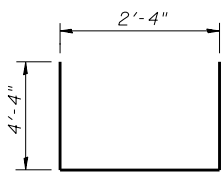


**MINIMUM BAR LAP**

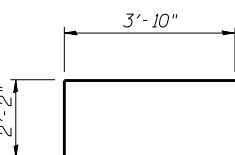
#5 bar = 3'-2"



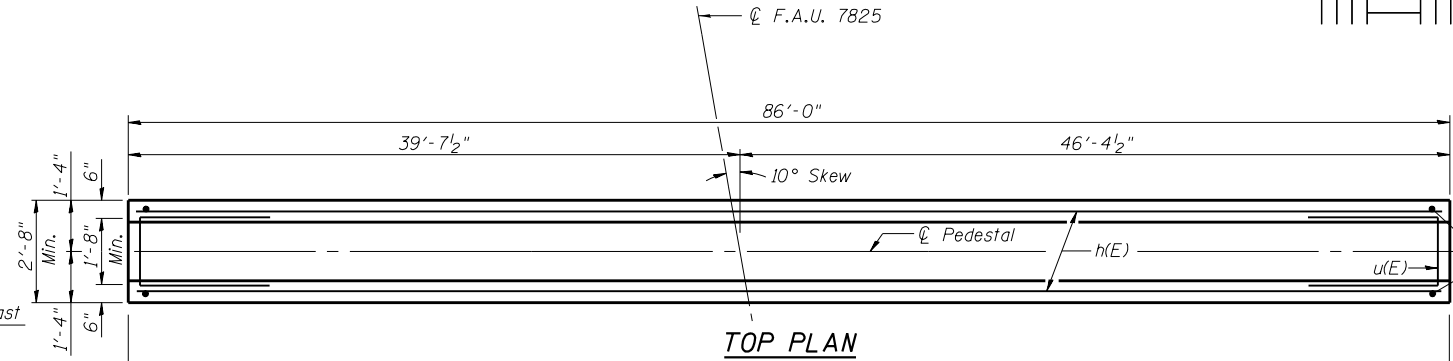
**END VIEW**



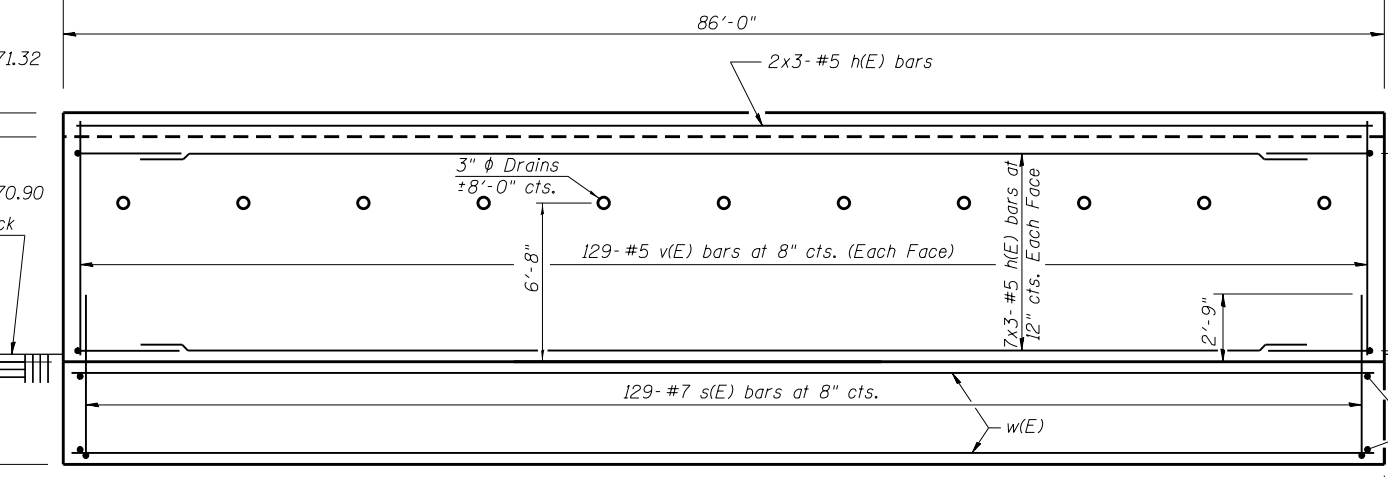
BAR s(E)



BAR u(E)



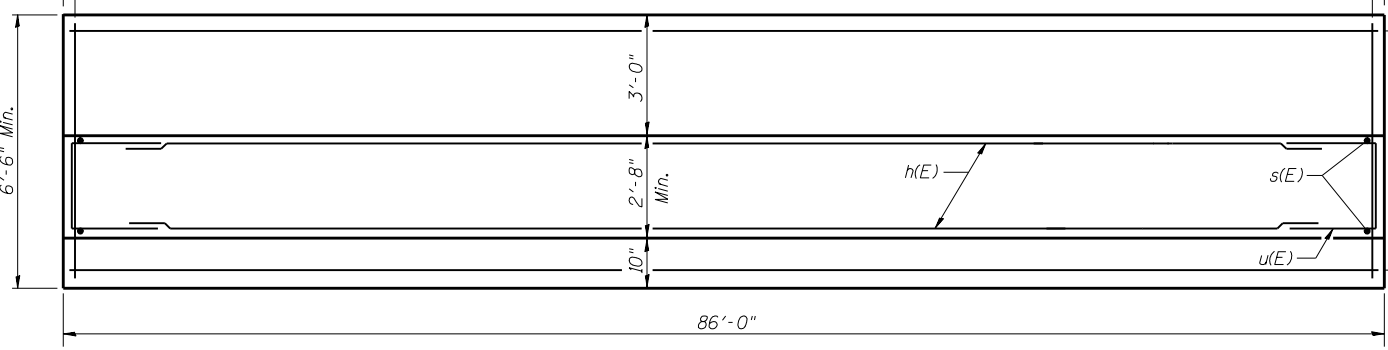
**TOP PLAN**



**ELEVATION**

(Looking South)

87-#5 t1(E) bars at 12" cts., top  
 115-#8 t(E) bars at 9" cts., bottom



**FOOTING PLAN**



D:\100\100\100276\WD 4 - IL 96 Cedar Creek Bridge Plans\Material Only Contract Plans - 3 Sided Structure\Footing.dgn

**KLINGNER & ASSOCIATES, P.C.**  
 Engineers • Architects • Surveyors

USER NAME = rjp	DESIGNED - RJP	REVISED -
PLOT SCALE = 26.3334' / 1" =	CHECKED - ADL	REVISED -
PLOT DATE = 2/10/2017	DRAWN - RJP	REVISED -
	CHECKED - ADL	REVISED -

STATE OF ILLINOIS  
 DEPARTMENT OF TRANSPORTATION

SOUTH FOOTING DETAILS  
 STRUCTURE NO. 001-0034  
 SHEET NO. 4 OF 7 SHEETS

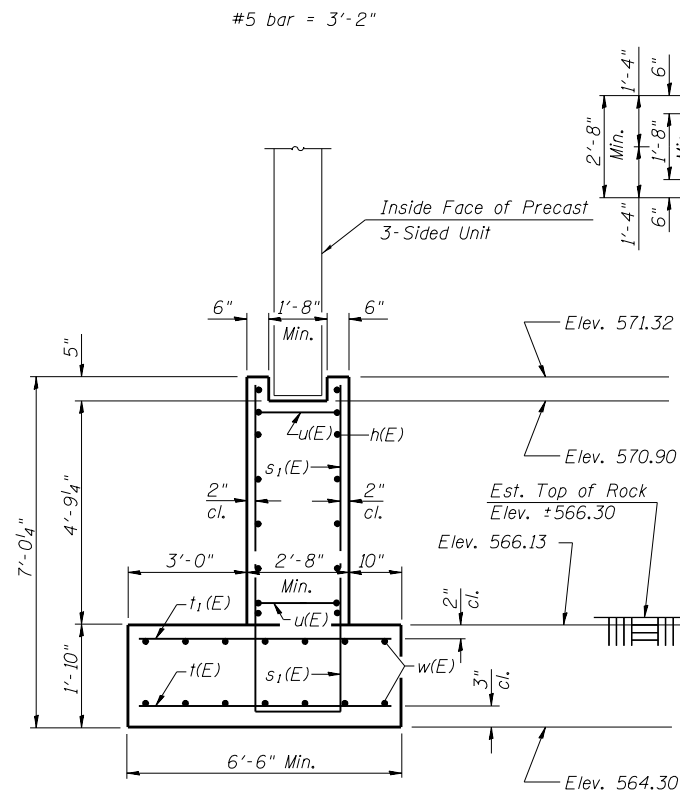
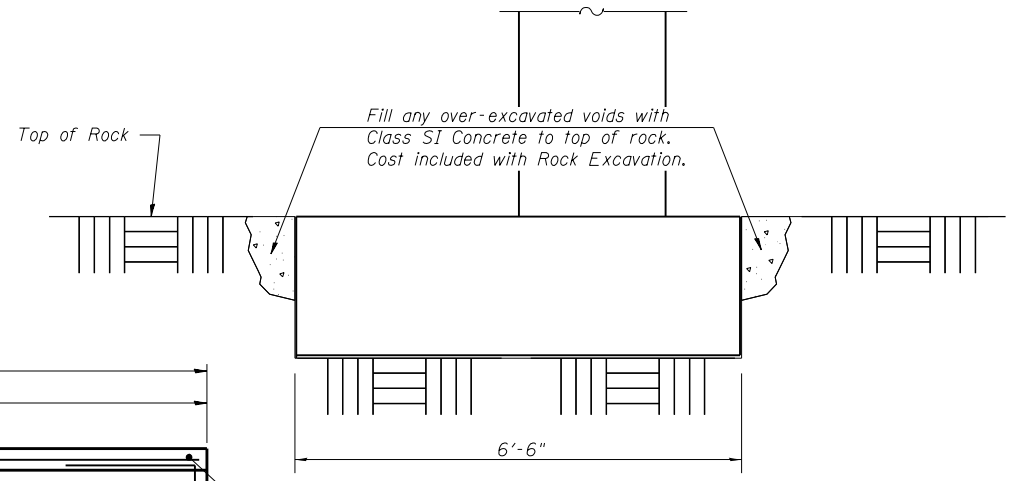
F.A.P. RTE. 7825	SECTION (K-15d) HF	COUNTY ADAMS	TOTAL SHEETS 10	SHEET NO. 7
CONTRACT NO. 72J80			ILLINOIS FED. AID PROJECT	

Klingner & Associates P.C.

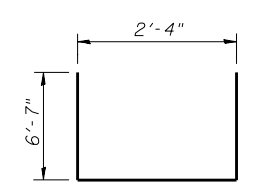
THIS SHEET FOR INFORMATION ONLY

Notes:  
 Precast footing option will not be allowed for this contract.  
 Bars indicated thus 5x3-#5 etc. indicates 5 lines of bars with 3 lengths per line.  
 The bottom of footing elevations shall be adjusted to ensure a minimum embedment of 22 inches in non-weathered rock. The rock excavation shall be made with near-vertical sides at the plan dimensions to allow the sides and base of the embedded portion of the footing to be cast against undisturbed rock surfaces.  
 Pedestal width to be adjusted if needed to accommodate Three-Sided Structure during Erection Contract.

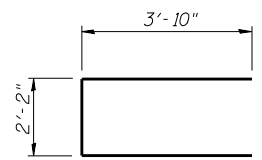
MINIMUM BAR LAP  
 #5 bar = 3'-2"



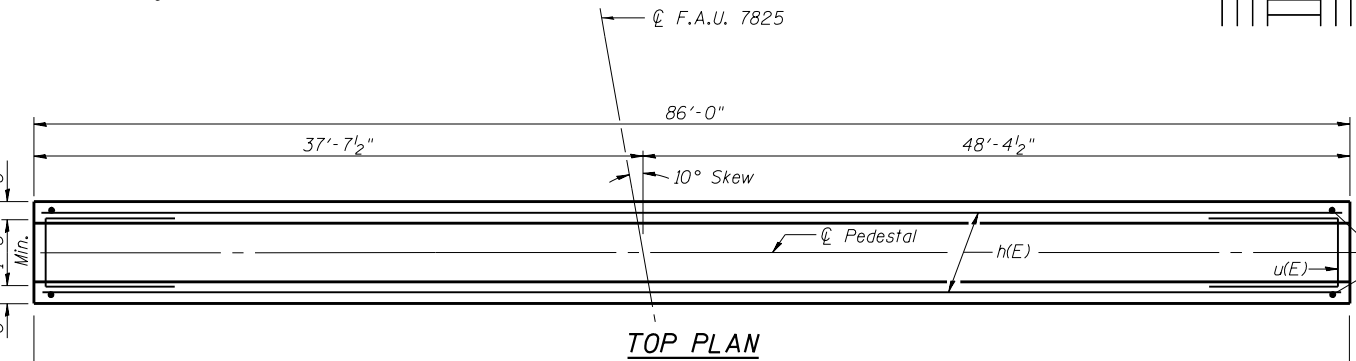
END VIEW



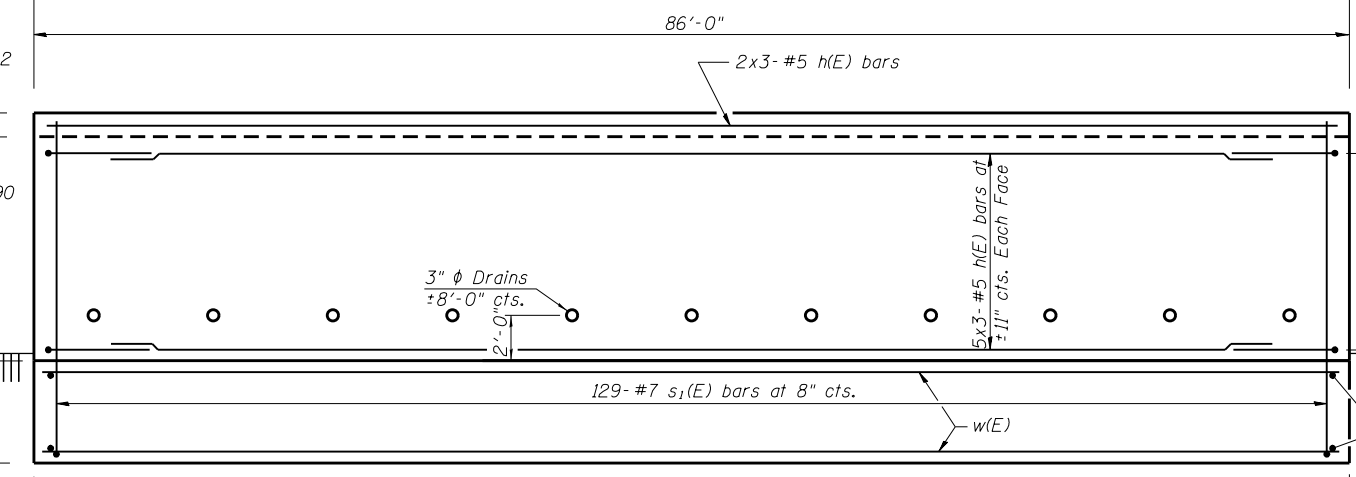
BAR s1(E)



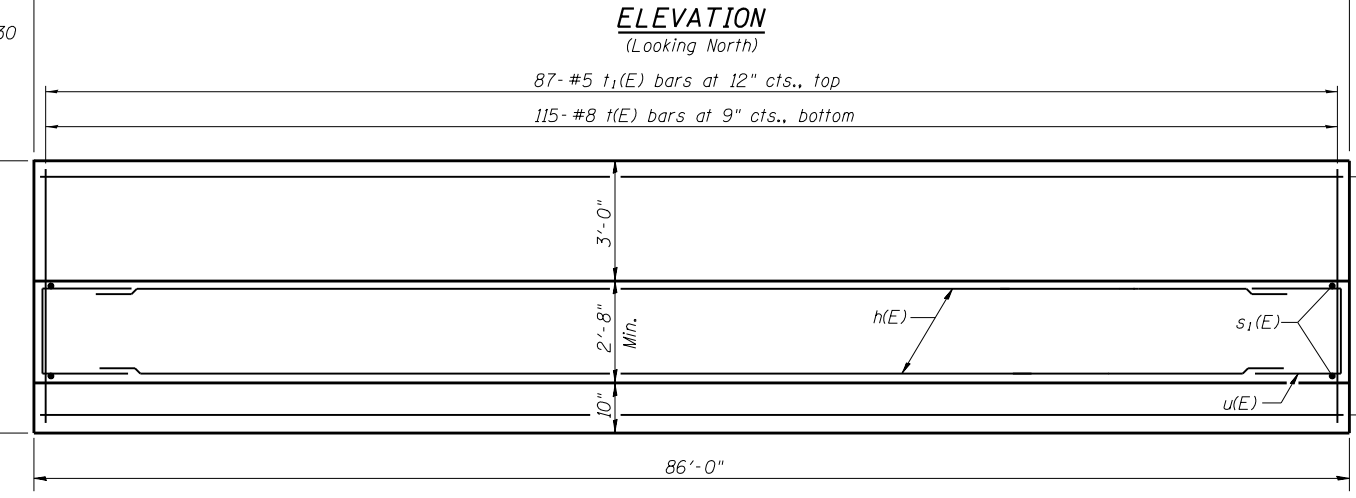
BAR u(E)



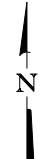
TOP PLAN



ELEVATION  
(Looking North)



FOOTING PLAN



D:\101\10276\10276.WD 4 - IL 196 Cedar Creek\Bridg Plans\Material Only\Contract Plans - 3-Sided Structure\Footing.dgn

**KLINGNER & ASSOCIATES, P.C.**  
 Engineers • Architects • Surveyors

USER NAME = rjp  
 PLOT SCALE = 26.4453' / in.  
 PLOT DATE = 2/18/2017

DESIGNED - RJP	REVISIONS
CHECKED - ADL	REVISIONS
DRAWN - RJP	REVISIONS
CHECKED - ADL	REVISIONS

STATE OF ILLINOIS  
 DEPARTMENT OF TRANSPORTATION

NORTH FOOTING DETAILS  
 STRUCTURE NO. 001-0034  
 SHEET NO. 5 OF 7 SHEETS

F.A.P. RTE.	SECTION	COUNTY	TOTAL SHEETS	SHEET NO.
7825	(K-15d) HF	ADAMS	10	8
CONTRACT NO. 72J80				
ILLINOIS FED. AID PROJECT				

Klingner & Associates P.C.





