

STATE OF ILLINOIS
DEPARTMENT OF TRANSPORTATION

F.A.I. RTE.	SECTION	COUNTY	TOTAL SHEETS	SHEET NO.
70	(25-2)RA-2	EFFINGHAM	26	1
		ILLINOIS	CONTRACT NO. 74790	

FOR INDEX OF SHEETS, SEE SHEET NO. 2

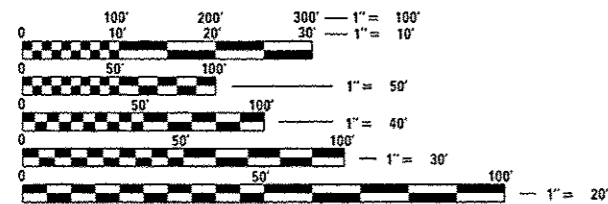
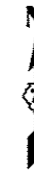
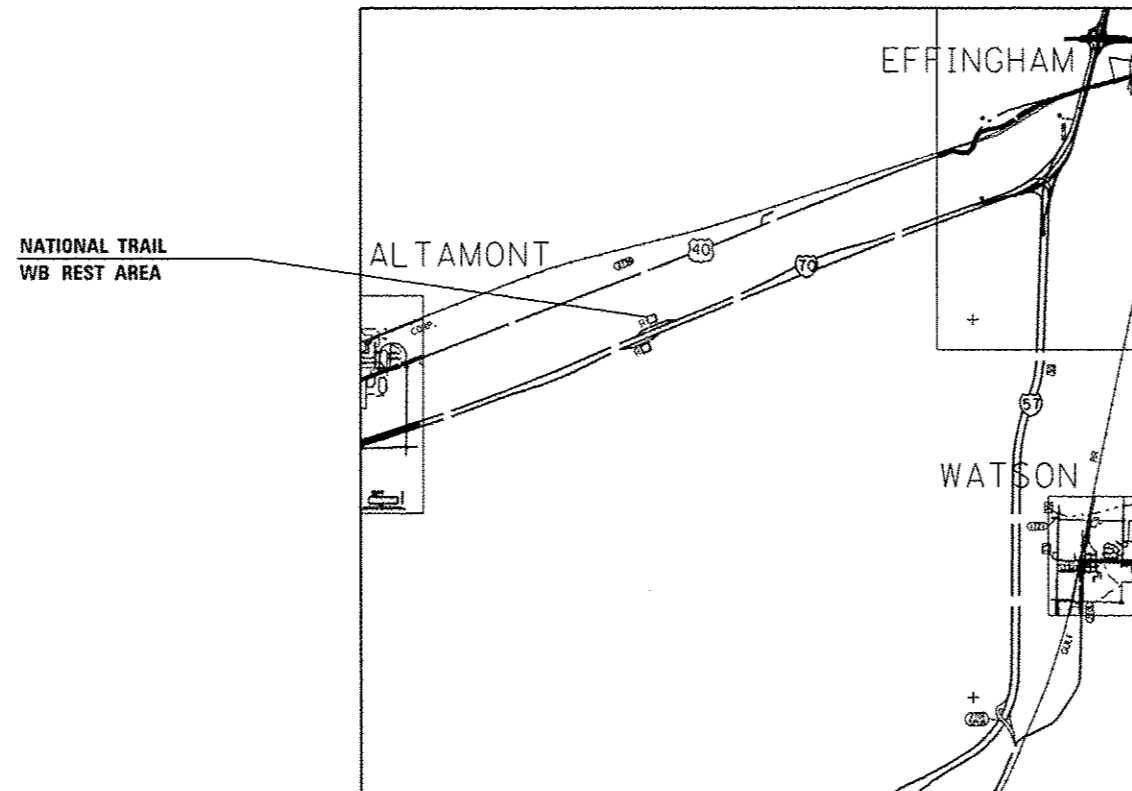
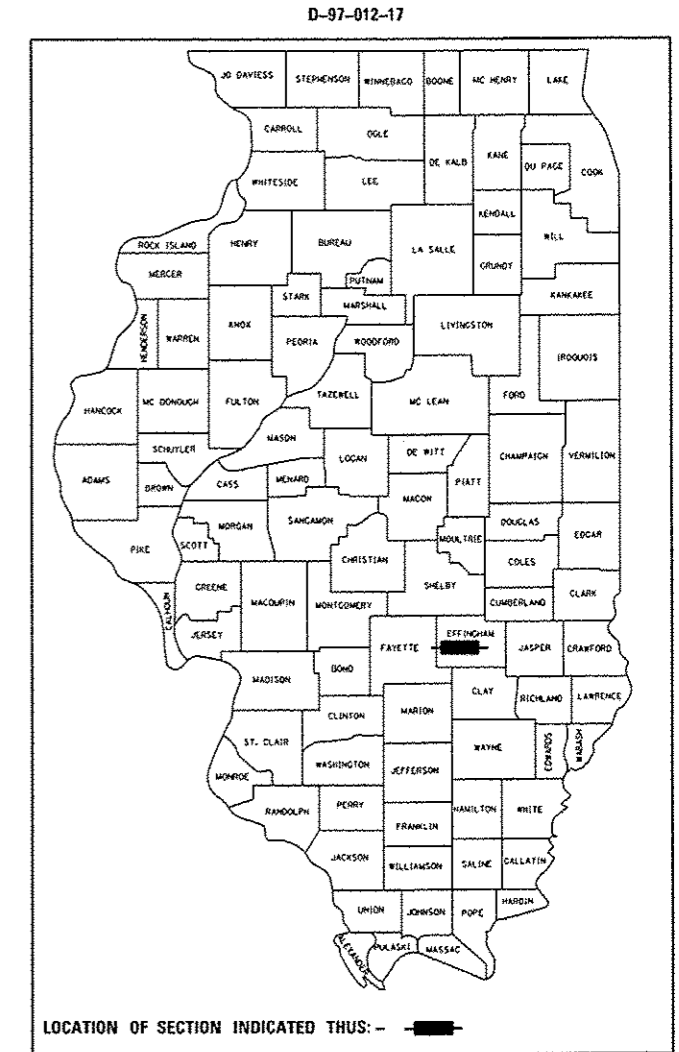
PROPOSED HIGHWAY PLANS

ADT = 21,600 (F.A.I. 70)

F.A.I. ROUTE 70 (I-70)
SECTION (25-2)RA-2

REST AREA
EFFINGHAM COUNTY

C-97-021-17



FULL SIZE PLANS HAVE BEEN PREPARED USING STANDARD ENGINEERING SCALES. REDUCED SIZED PLANS WILL NOT CONFORM TO STANDARD SCALES. IN MAKING MEASUREMENTS ON REDUCED PLANS, THE ABOVE SCALES MAY BE USED.

J.U.L.I.E.
JOINT UTILITY LOCATION INFORMATION FOR EXCAVATION
1-800-892-0123
OR 811

PROJECT ENGINEER: TOM RONAN
PROJECT MANAGER: RUSS WALKER
PHONE: (217) 342-8320
CONTRACT NO. 74790

GROSS LENGTH = 1032 FT. = 0.195 MILE
NET LENGTH = 1032 FT. = 0.195 MILE

STATE OF ILLINOIS
DEPARTMENT OF TRANSPORTATION

SUBMITTED February 09 20 17
[Signature]
REGIONAL ENGINEER

Mar 24 20 17
Maureen M. Addis, P.E.
ENGINEER OF DESIGN AND ENVIRONMENT

Mar 24 20 17
[Signature]
DIRECTOR OF PROGRAM DEVELOPMENT

PRINTED BY THE AUTHORITY
OF THE STATE OF ILLINOIS

SUMMARY OF QUANTITIES			TOTAL QUANTITIES	CONSTRUCTION TYPE CODE		
CODE NO	ITEM	UNIT		0005		
20201200	REMOVAL AND DISPOSAL OF UNSUITABLE MATERIAL	CU YD	10	10		
20400800	FURNISHED EXCAVATION	CU YD	638	638		
31000600	PROCESSING LIME STABILIZED SOIL MIXTURE 12"	SO YD	7663	7663		
31001500	LIME	TON	193	193		
35101400	AGGREGATE BASE COURSE, TYPE B	TON	31	31		
42000501	PORTLAND CEMENT CONCRETE PAVEMENT 10" (JOINTED)	SO YD	7568	7568		
44000100	PAVEMENT REMOVAL	SO YD	7568	7568		
44004250	PAVED SHOULDER REMOVAL	SO YD	98	98		
44213204	TIE BARS 3/4"	EACH	1052	1052		
48300500	PORTLAND CEMENT CONCRETE SHOULDERS 10"	SO YD	103	103		
60260100	INLETS TO BE ADJUSTED	EACH	1	1		
67100100	MOBILIZATION	LSUM	1	1		
70100820	TRAFFIC CONTROL AND PROTECTION, STANDARD	LSUM	1	1		
	701451					

SUMMARY OF QUANTITIES			TOTAL QUANTITIES	CONSTRUCTION TYPE CODE		
CODE NO	ITEM	UNIT		0005		
* 78009000	MODIFIED URETHANE PAVEMENT MARKING - LETTERS AND SYMBOLS	SO FT	5	5		
* 78009004	MODIFIED URETHANE PAVEMENT MARKING - LINE 4"	FOOT	2799	2799		
Z0012500	CONCRETE CURB REPAIR	FOOT	407	407		

* SPECIALTY ITEM

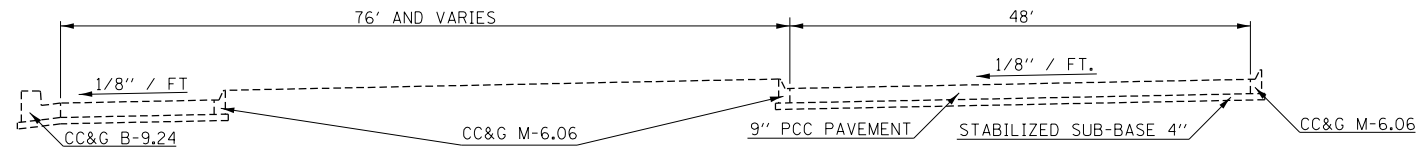
FILE NAME =	USER NAME = staffennk	DESIGNED -	REVISED -
g:\11\284EB10\INTEG\illinois.gov\PW\DOT\Documents\DOT Offices\District 7\Projects\747	g:\11\284EB10\INTEG\illinois.gov\PW\DOT\Documents\DOT Offices\District 7\Projects\747	g:\11\284EB10\INTEG\illinois.gov\PW\DOT\Documents\DOT Offices\District 7\Projects\747	g:\11\284EB10\INTEG\illinois.gov\PW\DOT\Documents\DOT Offices\District 7\Projects\747
Default	Default	DATE -	REVISED -

STATE OF ILLINOIS
DEPARTMENT OF TRANSPORTATION

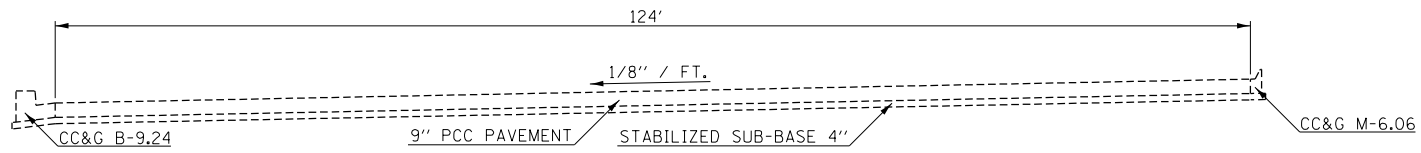
SUMMARY OF QUANTITIES

SCALE: SHEET OF SHEETS STA. TO STA.

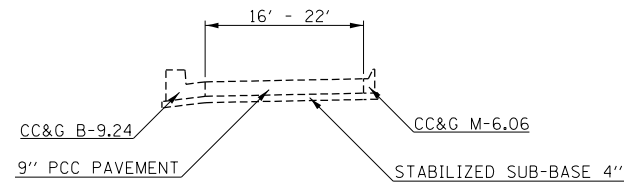
F.A.I. RTE.	SECTION	COUNTY	TOTAL SHEETS	SHEET NO.
70	125-21RA-2	EFFINGHAM	26	3
ILLINOIS FED. AID PROJECT			CONTRACT NO. 74790	



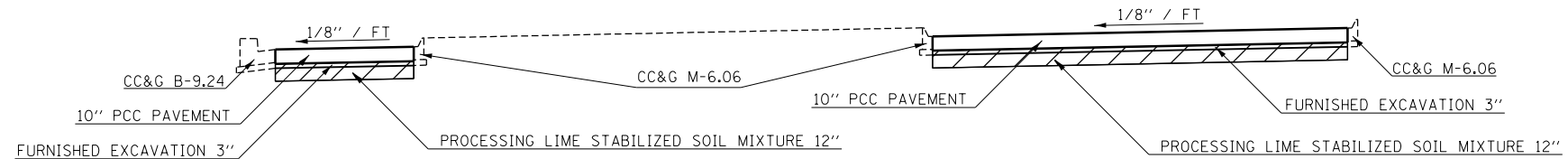
EXISTING TYPICAL CROSS SECTION, PARKING AREA AND ISLAND



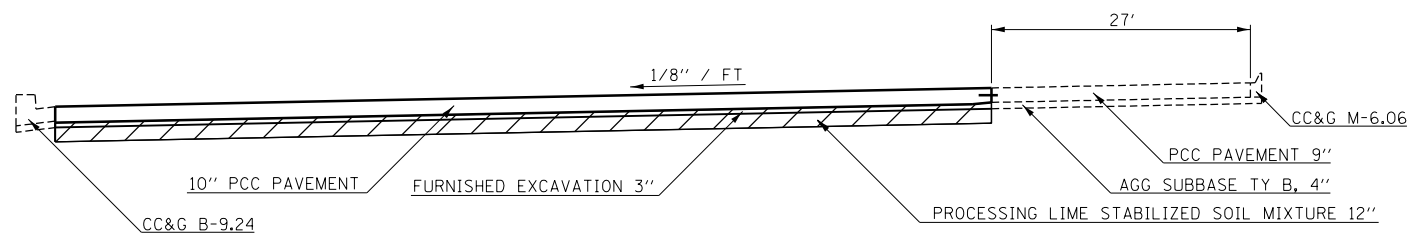
EXISTING TYPICAL CROSS SECTION, PARKING AREA



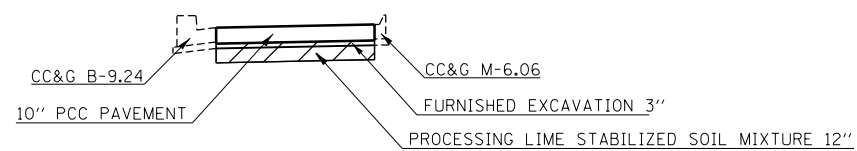
EXISTING TYPICAL CROSS SECTION, RAMP



PROPOSED TYPICAL CROSS SECTION, PARKING AREA AND ISLAND



*PROPOSED TYPICAL CROSS SECTION, PARKING AREA



PROPOSED TYPICAL CROSS SECTION, RAMP

*SAME AS TYPICAL SECTION THRU PARKING AREA, ONLY ADJACENT TO PAVEMENT TO REMAIN IN PLACE.

FILE NAME =	USER NAME = steffenmk	DESIGNED -	REVISED -	STATE OF ILLINOIS DEPARTMENT OF TRANSPORTATION	TYPICAL SECTIONS			F.A.I. R.T.E.	SECTION	COUNTY	TOTAL SHEETS	SHEET NO.
pw:\IL\084EBIDINTEG.illinois.gov\PWIDOT\Documents\IDOT Offices\District 7\Projects\74790\Drawings\CAD\Sheets\0774790-sht-typical	PLLOT SCALE = 20.0000' / in.	CHECKED -	REVISED -					70	(25-2)RA-2	EFFINGHAM	26	4
Default	PLLOT DATE = 2/9/2017	DATE -	REVISED -		SCALE: SHEET OF SHEETS STA. TO STA.			CONTRACT NO. 74790				
					ILLINOIS FED. AID PROJECT							

PAVING SCHEDULE

AREA	LOCATION			LENGTH FEET	PAVEMENT WIDTH FEET	PORTLAND CEMENT CONCRETE PAVEMENT, 10" (JOINTED) SQ YD	PAVEMENT REMOVAL SQ YD	SHOULDER WIDTH FEET	PORTLAND CEMENT CONCRETE SHOULDERS 10" SQ YD	PAVED SHOULDER REMOVAL SQ YD
	STA	TO	STA							
ENTRANCE	12+31.00	TO	12+35.00	4.0				12	5.3	5.3
TP	12+31.00	TO	12+35.00	4.0				12	5.3	5.3
S2	12+35.00 L	TO	12+42.42 L	7.4				VARIES	2.7	2.7
•S1(E)	12+35.00	TO	13+51.19	109.1				VARIES		90.0
	12+35.00	TO	12+45.00	10.0	16.0	17.8	17.8	12.0	13.3	
	12+45.00	TO	12+66.00	21.0	16.0	37.3	37.3	VARIES	25.4	
	12+66.00	TO	13+51.19	77.5	VARIES	218.5	218.5	VARIES	56.3	
	13+51.19	TO	14+37.56	64.2	VARIES	327.5	327.5			
	14+37.56	TO	14+52.86	15.4	VARIES	71.7	71.7			
CAR PARKING	14+52.86	TO	16+21.06	168.2	48.0	900.8	900.8			
	16+21.06	TO	18+32.59	211.5	20.8	492.0	492.0			
	18+32.59	TO	19+47.20	114.6	48.2	613.1	613.1			
	19+47.20	TO	19+71.85	24.6	VARIES	38.2	38.2			
TRUCK PARKING	14+37.56	TO	15+22.78	85.2	VARIES	439.2	439.2			
	15+22.78	TO	18+70.09	347.3	76.1	2,935.0	2,935.0			
	18+70.09	TO	20+58.33	188.2	VARIES	789.6	789.6			
EXIT	20+58.33	TO	22+67.19	208.9	VARIES	685.9	685.9			
TOTALS						7,567	7,567		103	98

•S1(E) IS EXISTING SHOULDER 1

AGGREGATE AND EARTHWORK SCHEDULE

AREA	LOCATION			LENGTH FEET	AREA SQ YD	AGGREGATE BASE COURSE, TYPE B TON	FURNISHED EXCAVATION CU YD	PROCESSING LIME STABILIZED SOIL MIXTURE - 12" SQ YD	LIME TON	REMOVAL AND DISPOSAL OF UNSUITABLE MATERIAL CU YD
	STA	TO	STA							
C1	12+66.00	TO	14+52.16	193.7	23.7	4.0				
C2	13+45.40	TO	14+45.19	81.8	11.4	2.0				
C3	15+07.60	TO	15+22.77	15.0	3.2	0.5				
C4	19+47.22	TO	19+66.00	16.0	3.6	0.6				
CA	CURB (ADDITIONAL QUANTITY)			100.0	12.0	2.1				
S1(E)	12+35.00	TO	13+51.32	116.2	90.1		7.5			
S1(P)	12+35.00	TO	13+51.32	116.2	95.0			95.0	2.4	
S2	12+35.00	TO	12+42.40	7.4	24.2	0.5				
TP	12+31.00	TO	12+35.00	4.0	5.3	0.9				
P1	12+35.00	TO	22+67.19	1,032.2	7,567.5		630.6	7,567.5	189.9	
A	ADDITIONAL QUANTITY					20.5				10.0
TOTALS						31	638	7,663	193	10

PAVEMENT MARKING SCHEDULE

LOCATION			LENGTH	LEFT / RIGHT	MODIFIED URETHANE PAVEMENT MARKING-LETTERS AND SYMBOLS (YELLOW)	MODIFIED URETHANE PAVEMENT MARKING-LINE 4" (YELLOW)	MODIFIED URETHANE PAVEMENT MARKING-LINE 4" (WHITE)
STA	TO	STA	FOOT	L / R	SQ FT	FOOT	FOOT
CAR PARKING			650.0				650.0
TRUCK PARKING			1,852.0		5.0	184.0	1,668.0
12+35	TO	12+84	49.0	R			49.0
12+35	TO	13+39	99.0	L		99.0	
21+11	TO	22+67.19	149.0	L		149.0	
TOTALS			2,799		5	432	2,367

CONCRETE CURB REPAIR SCHEDULE

AREA	LOCATION		LEFT / RIGHT	LENGTH	AREA	CONCRETE CURB REPAIR
	STA	TO STA				
C1	12+66.00	TO 14+52.16	R	193.7	23.7	193.7
C2	13+45.40	TO 14+45.19	L	81.8	11.4	81.8
C3	15+07.60	TO 15+22.77	L	15.0	3.2	15.0
C4	19+47.22	TO 19+66.00	R	16.0	3.6	16.0
CA	CURB (ADDITIONAL QUANTITY)			100.0	12.0	100.0
TOTALS					407	53.9

INLET SCHEDULE

LOCATION		INLETS TO BE ADJUSTED
STA	LEFT / RIGHT	
13+97.61	L	1
TOTAL		1

FILE NAME =	USER NAME = steffenmk	DESIGNED -	REVISED -
pw:\IL\084EBIDINTEG.illinois.gov\PIWIDOT\Documents\IDOT Offices\District 7\Projects\74790\Drawings\CAD\Sheets\0774790-sht-schedule		DRAWN -	REVISED -
Default	PLOT SCALE = 100.0000' / in.	CHECKED -	REVISED -
	PLOT DATE = 2/9/2017	DATE -	REVISED -

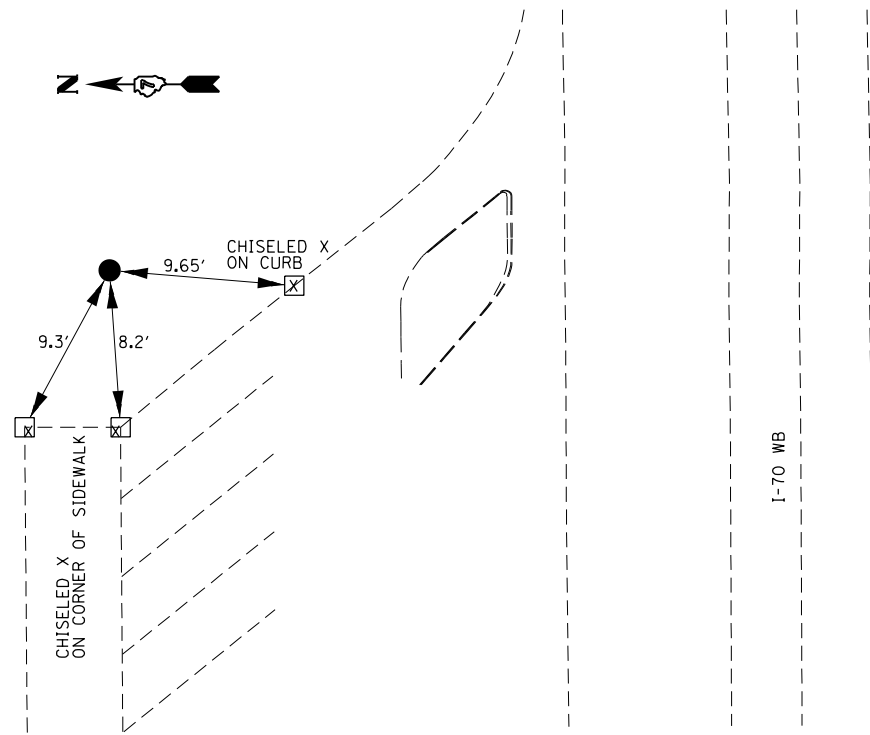
STATE OF ILLINOIS
DEPARTMENT OF TRANSPORTATION

SCHEDULE OF QUANTITIES

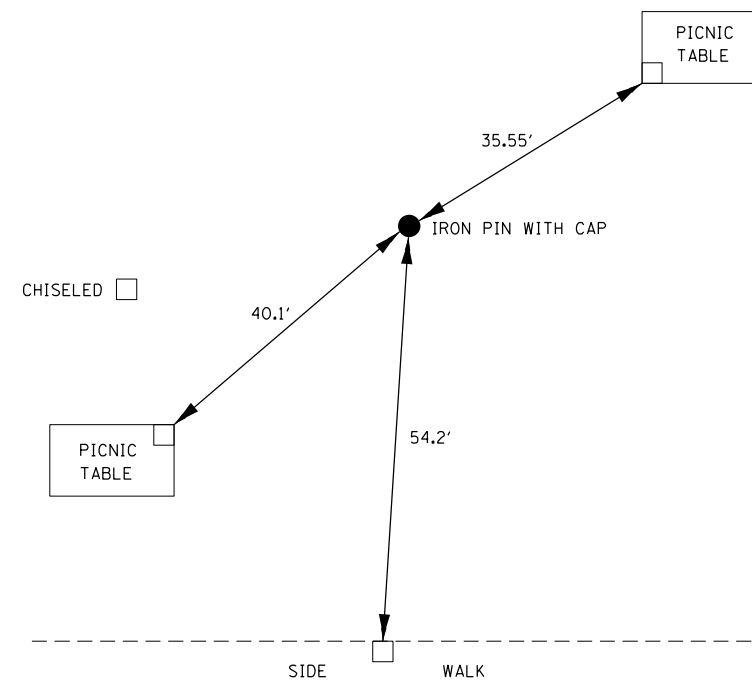
SCALE: SHEET OF SHEETS STA. TO STA.

F.A.I. RTE.	SECTION	COUNTY	TOTAL SHEETS	SHEET NO.
70	(25-2)RA-2	EFFINGHAM	26	6
ILLINOIS FED. AID PROJECT			CONTRACT NO. 74790	

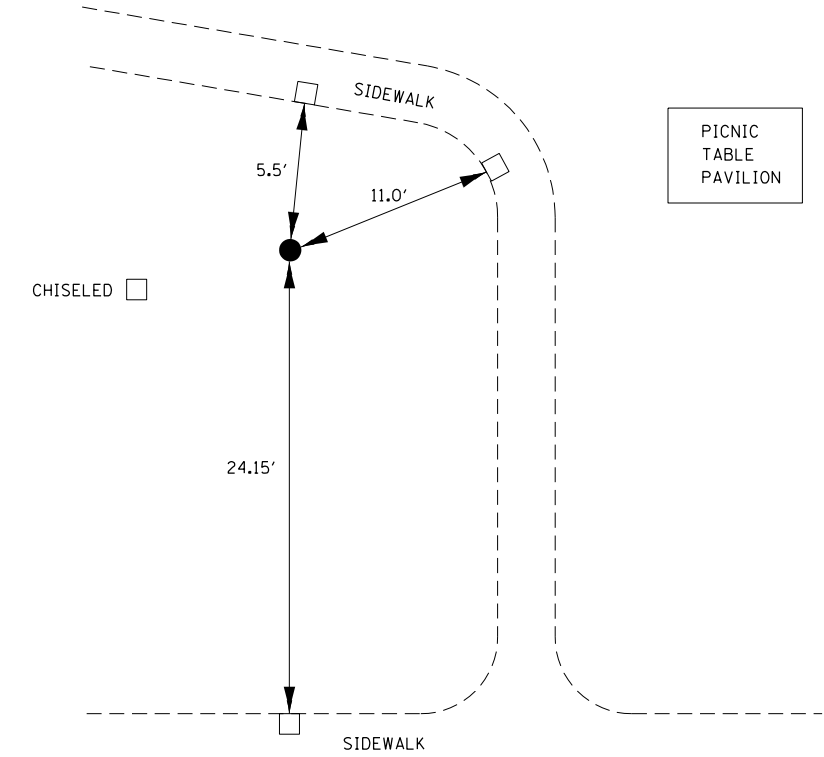
TRAV. # 106 I-70 STA. 1775+92



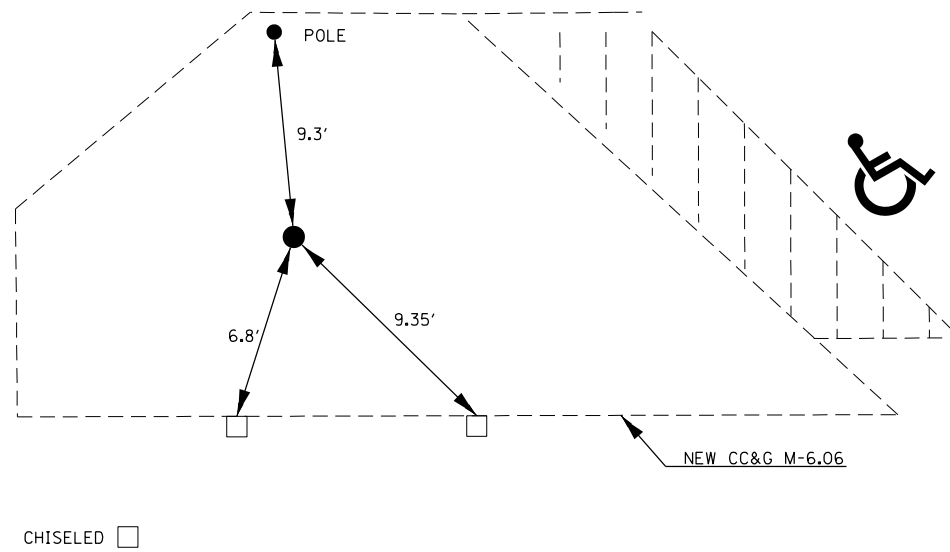
TRAV. # 107 I-70 STA. 1775+53



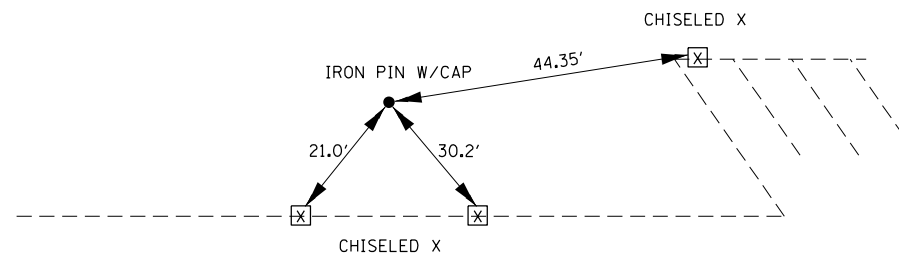
TRAV. # 108 I-70 STA. 1774+40



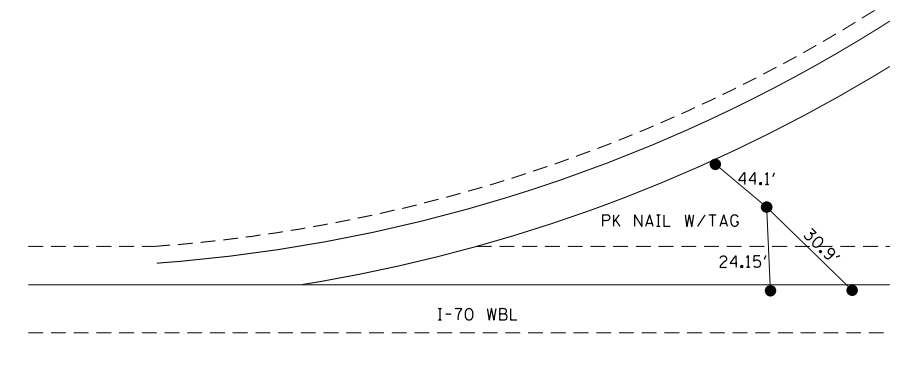
TRAV. # 109 I-70 STA. 1773+52



TRAV. # 113 I-70 STA. 1770+25



TRAV. # 117 I-70 STA. 1767+67



FILE NAME =	USER NAME = steffenk	DESIGNED -	REVISED -
p:\11084EBIDINTEG\Illinois.gov\PWIDOT\Documents\IDOT Offices\District 7\Projects\74790\Drawings\CADsheets\0774790-Ties, Benchmarks\Tie Details.dgn		DRAWN -	REVISED -
Default	PLOT SCALE = 100.0000' / 1in.	CHECKED -	REVISED -
	PLOT DATE = 2/9/2017	DATE -	REVISED -

STATE OF ILLINOIS
DEPARTMENT OF TRANSPORTATION

TIE POINTS AND BENCHMARKS

SCALE: SHEET OF SHEETS STA. TO STA.

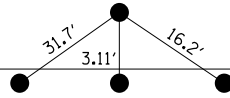
F.A.I. RTE.	SECTION	COUNTY	TOTAL SHEETS	SHEET NO.
70	(25-2)RA-2	EFFINGHAM	26	7
CONTRACT NO. 74790				
ILLINOIS FED. AID PROJECT				

TRAV #118 I-70 STA. 1772+40



REST AREA PARKING LOT

PK NAIL W/TAG



I-70 WBL

BENCHMARKS

- BM#201 CHISELED SQUARE SW CORNER OF LIGHTPOLE, STA. 1789+10 LT 32.3' EOP, ELEV. 580.00
- BM#202 CHISELED SQUARE ON HEADWALL OF 36" PIPE CULVERT, STA. 11+00(RAMP) LT 37.6' EOP(RAMP), ELEV. 586.79
- BM#203 CHISELED SQUARE S. SIDE OF CONC. FOUNDATION OF LIGHTPOLE MARKED "SW" STA. 1772+15 LT 49.1' EOP, ELEV. 599.36
- BM#204 CHISELED SQUARE ON HEADWALL OF 36" PIPE CULVERT, STA. 1766+45 LT 64.8' EOP(RAMP), ELEV. 596.80

NOTE: TRAV. #110, I-70 STA. 1773+12, HAS NO TIES.
STATIONING FOR TRAVERSE POINTS IS FROM I-70 AND DOES NOT MATCH THE ALIGNMENT IN THE PLANS.

FILE NAME =	USER NAME = steffenk	DESIGNED -	REVISED -
p:\11084EBIDINTEG.illinois.gov\PWIDOT\Documents\DOT Offices\District 7\Projects\74790\Drawings\CADsheets\0774790-Ties, Benchmarks\Tie Details.dgn		DRAWN -	REVISED -
Default	PLOT SCALE = 100.0000' / in.	CHECKED -	REVISED -
	PLOT DATE = 2/9/2017	DATE -	REVISED -

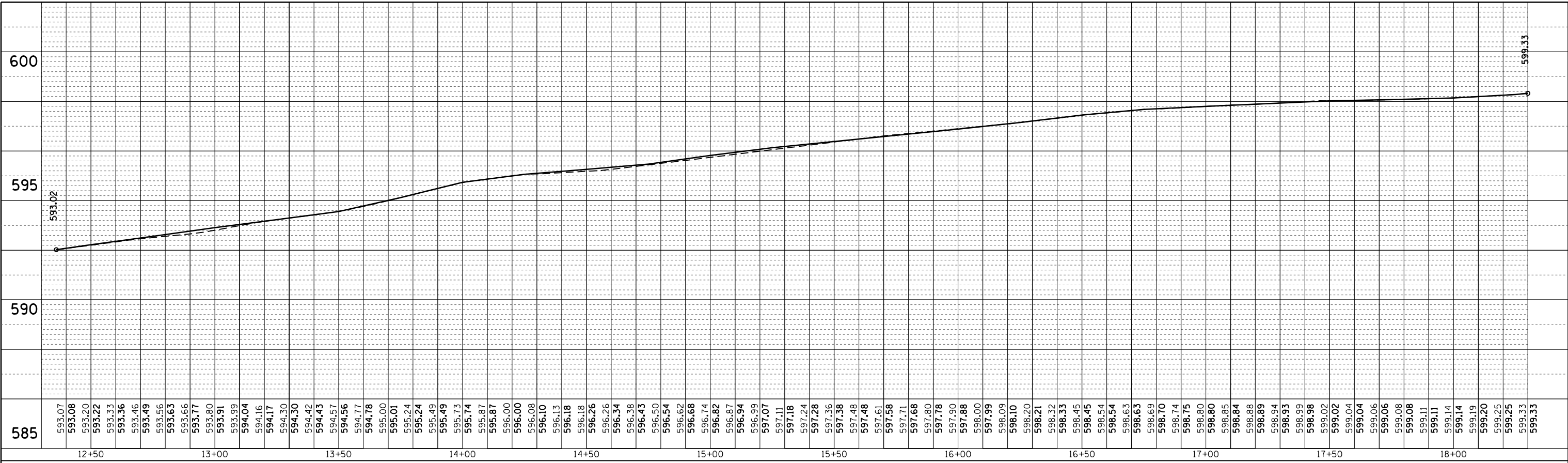
**STATE OF ILLINOIS
DEPARTMENT OF TRANSPORTATION**

TIE POINTS AND BENCHMARKS

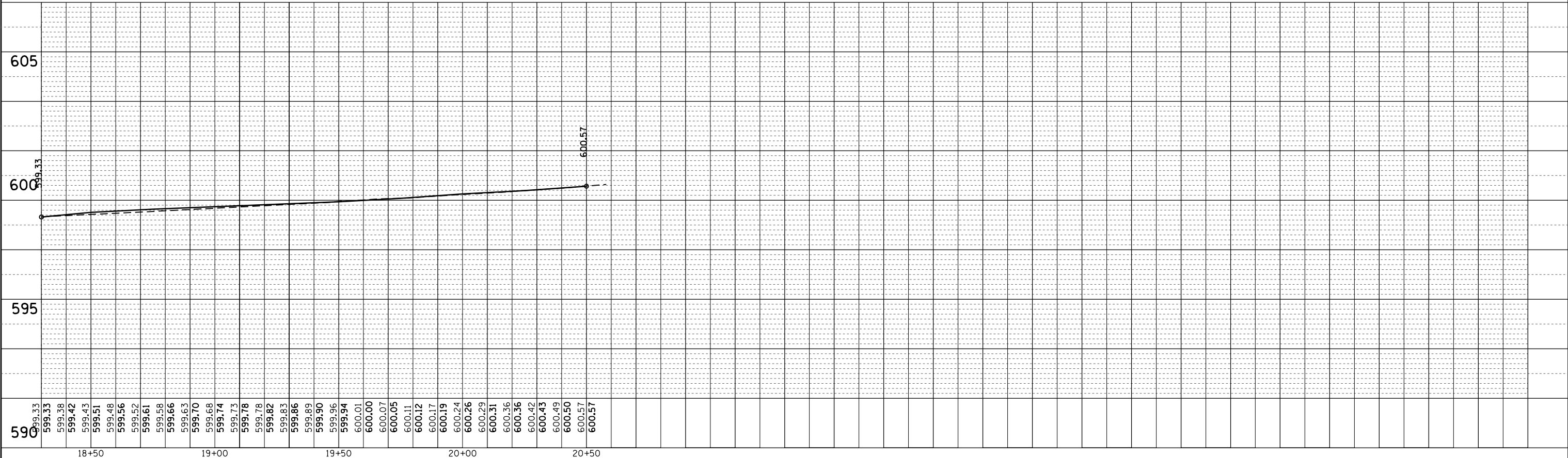
SCALE: SHEET OF SHEETS STA. TO STA.

F.A.I. RTE.	SECTION	COUNTY	TOTAL SHEETS	SHEET NO.
70	(25-2)RA-2	EFFINGHAM	26	8
			CONTRACT NO. 74790	
ILLINOIS FED. AID PROJECT				

PLAN	SURVEYED	BY	DATE
NOTE BOOK NO.	PLOTTED		
	ALIGNMENT		
	CHECKED		
	FILE NAME		



PROFILE	SURVEYED	BY	DATE
NOTE BOOK NO.	PLOTTED		
	GRADES CHECKED		
	STRUCTURE		
	NOTATIONS		



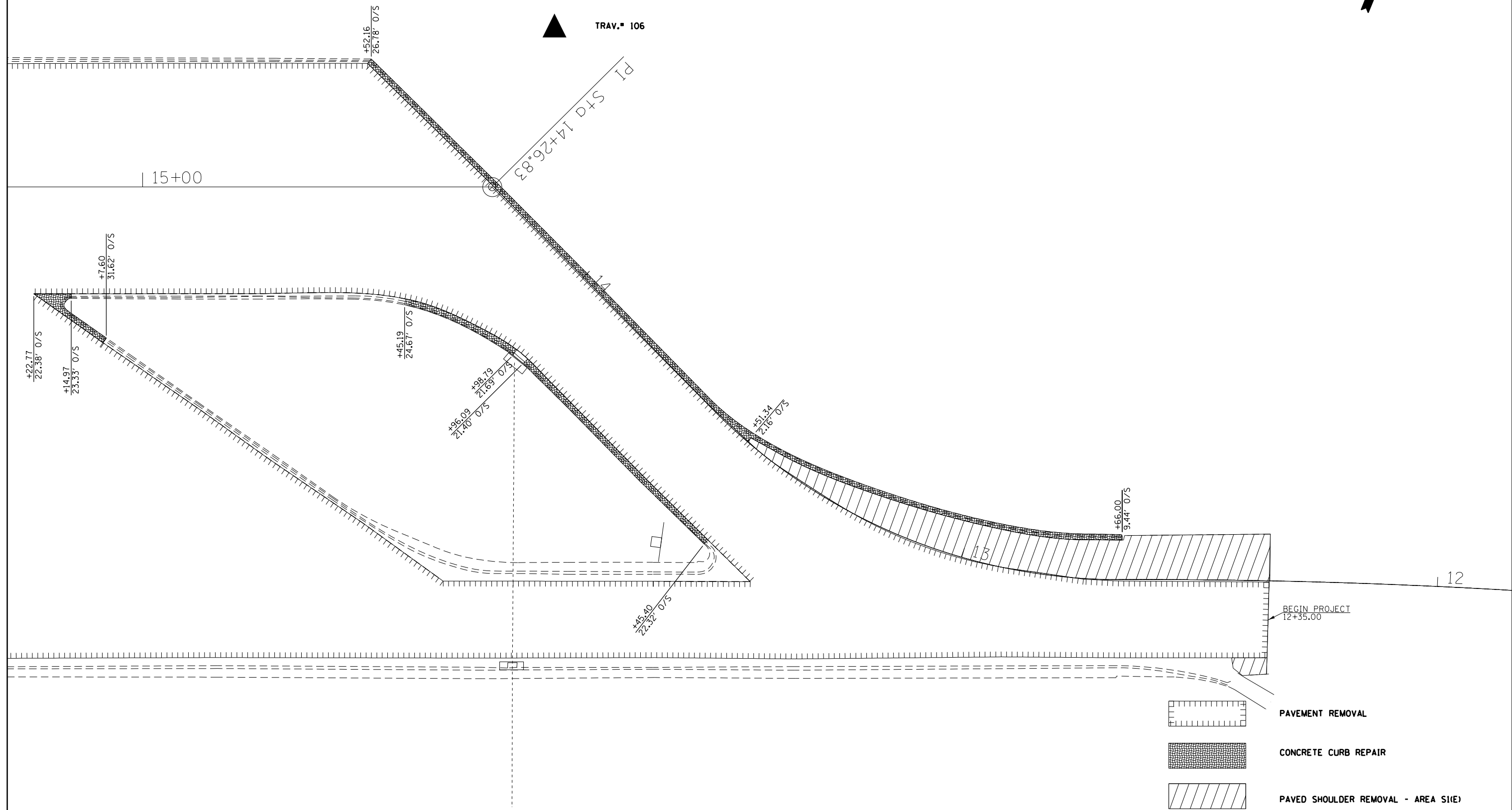
FILE NAME =	USER NAME = steffennk	DESIGNED -	REVISED -
p:\1\084EBIDINTEG\Illinois.gov\PIDOT\Documents\IDOT Offices\District 7\Projects\74790\DRAWN\CAD\Sheets\0774790-sht-Profile.dgn		CHECKED -	REVISED -
Default		DATE -	REVISED -

**STATE OF ILLINOIS
DEPARTMENT OF TRANSPORTATION**

SCALE:	SHEET	OF	SHEETS	STA.	TO	STA.
--------	-------	----	--------	------	----	------

PROFILE

F.A.I. RTE.	SECTION	COUNTY	TOTAL SHEETS	SHEET NO.
70	(25-2)RA-2	EFFINGHAM	26	9
CONTRACT NO. 74790				
ILLINOIS FED. AID PROJECT				

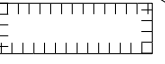
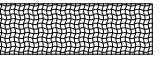



TRAV.# 106

15+00

PI STD 14+26.83

BEGIN PROJECT
12+35.00

-  PAVEMENT REMOVAL
-  CONCRETE CURB REPAIR
-  PAVED SHOULDER REMOVAL - AREA S1(E)

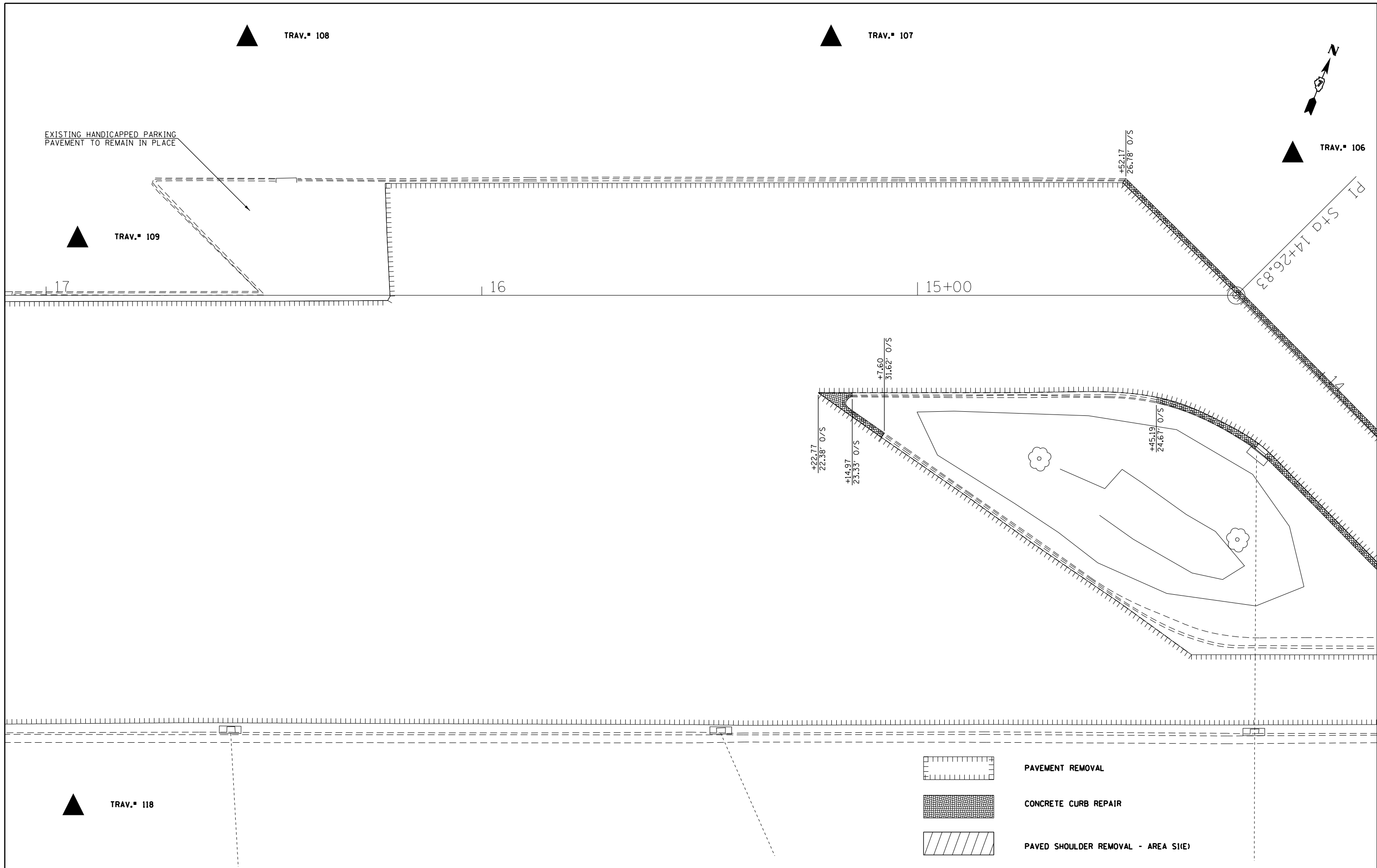
FILE NAME =	USER NAME = walkerr	DESIGNED -	REVISED -
p:\11\084EBIDINTEG.illinois.gov\PWIDOT\Documents\IDOT Offices\District 7\Projects\74790\Drawings\CAD\Sheets\0774790-sht-removal		DRAWN -	REVISED -
Default	PLOT SCALE = 20.0000' / in.	CHECKED -	REVISED -
	PLOT DATE = 2/24/2017	DATE -	REVISED -

**STATE OF ILLINOIS
DEPARTMENT OF TRANSPORTATION**

REMOVAL DETAILS

SCALE: SHEET OF SHEETS STA. TO STA.

F.A.I. RTE.	SECTION	COUNTY	TOTAL SHEETS	SHEET NO.
70	(25-2)RA-2	EFFINGHAM	26	10
CONTRACT NO. 74790				
ILLINOIS FED. AID PROJECT				

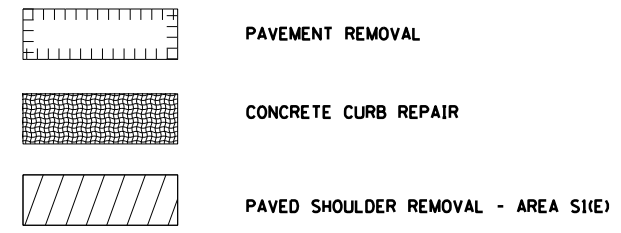
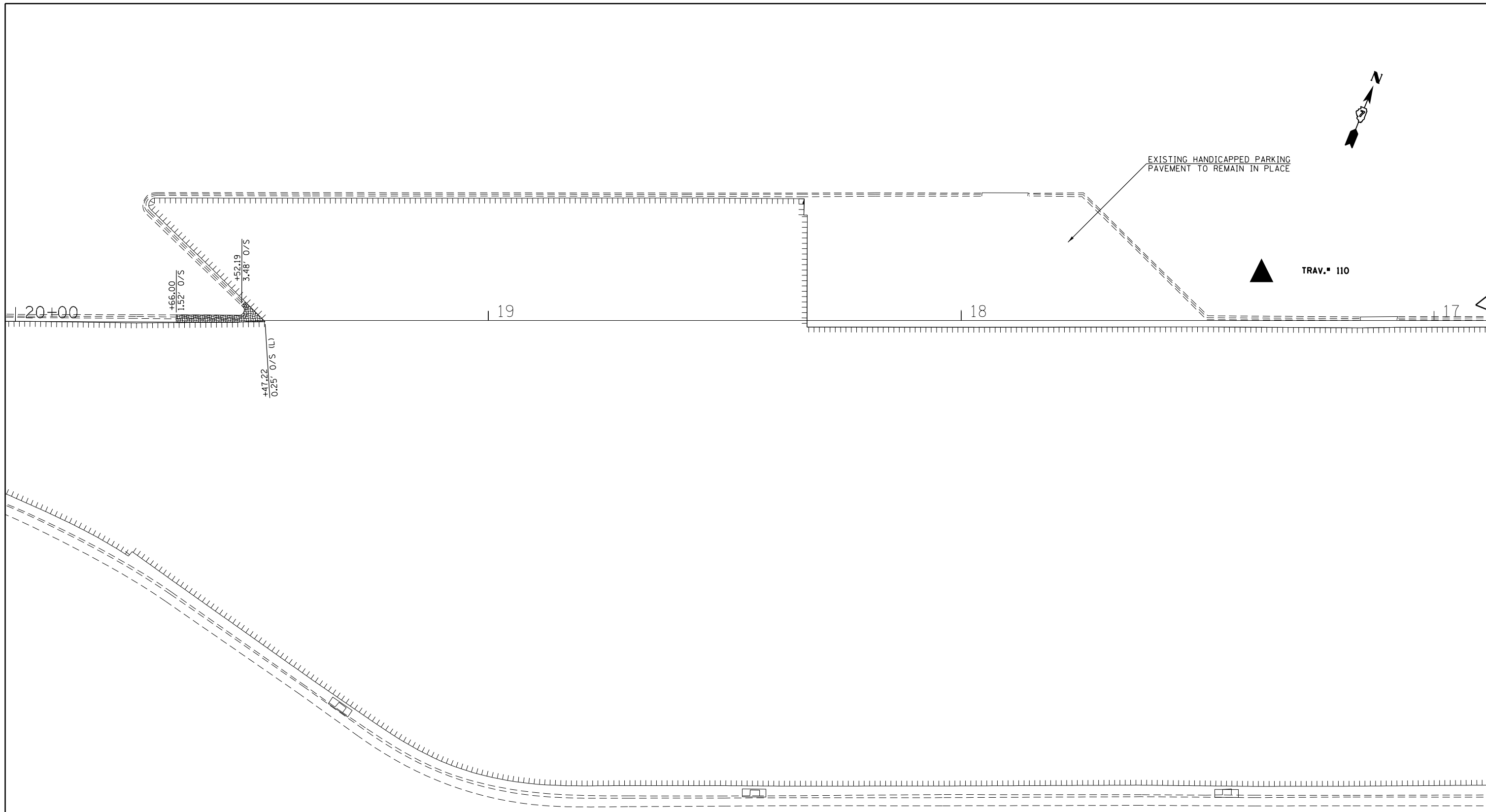


FILE NAME =	USER NAME = walkerr	DESIGNED -	REVISED -
p:\11084EBIDINTEG.illinois.gov\PWIDOT\Documents\IDOT Offices\District 7\Projects\74790\Drawings\CADsheets\0774790-sht-removal		DRAWN -	REVISED -
Default	PLOT SCALE = 20.0000' / in.	CHECKED -	REVISED -
	PLOT DATE = 2/24/2017	DATE -	REVISED -

**STATE OF ILLINOIS
DEPARTMENT OF TRANSPORTATION**

REMOVAL DETAILS			
SCALE:	SHEET	OF	SHEETS
	STA.		TO STA.

F.A.I. RTE.	SECTION	COUNTY	TOTAL SHEETS	SHEET NO.
70	(25-2)RA-2	EFFINGHAM	26	11
CONTRACT NO. 74790				
ILLINOIS FED. AID PROJECT				

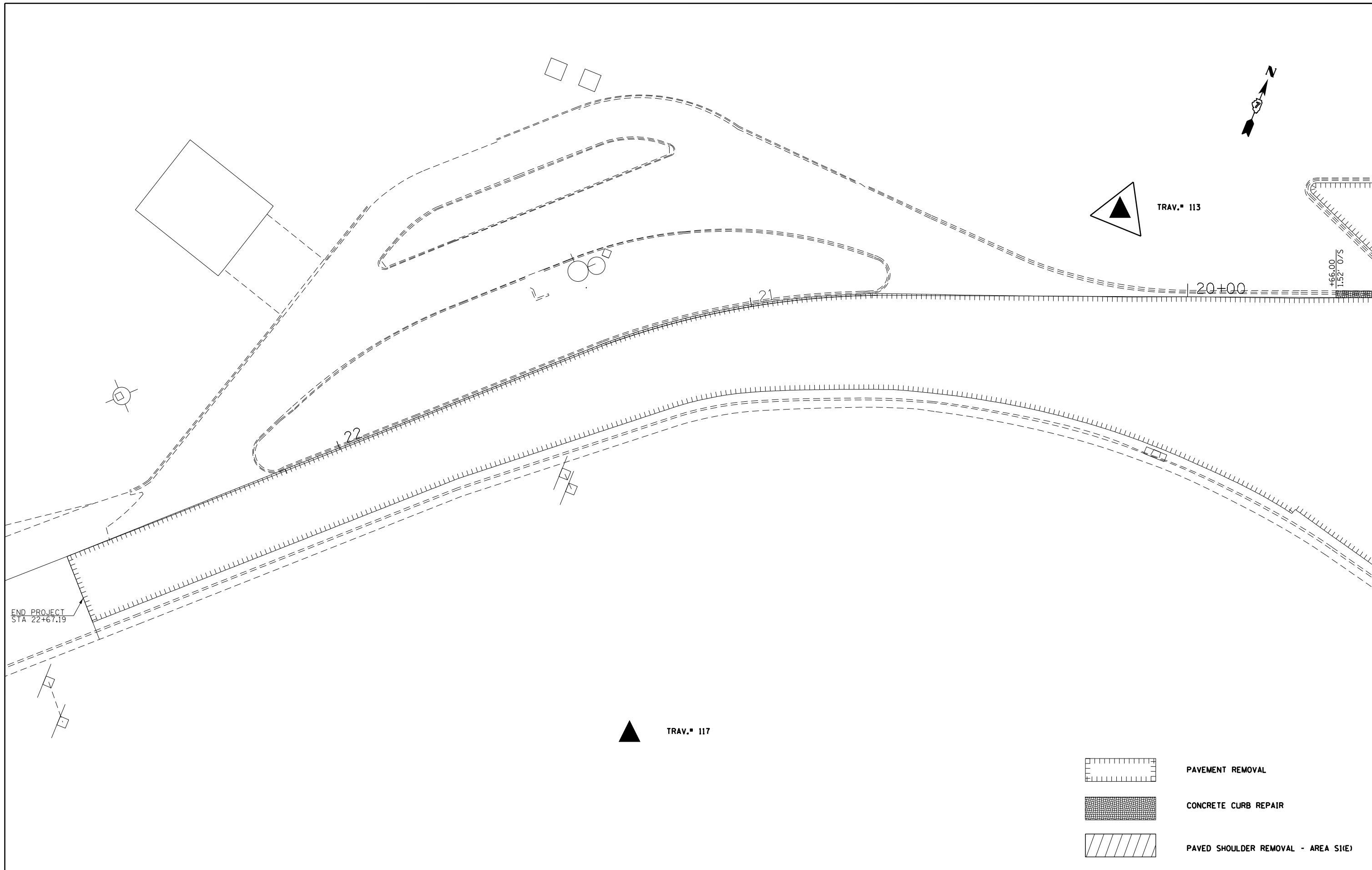


FILE NAME =	USER NAME = walkerr	DESIGNED -	REVISED -
pw:\IL\084EBIDINTEG.illinois.gov\PWIDOT\Documents\IDOT Offices\District 7\Projects\74790\Drawings\CAD\Sheets\D774790-sht-removal		DRAWN -	REVISED -
Default	PLOT SCALE = 20.0000' / in.	CHECKED -	REVISED -
	PLOT DATE = 2/24/2017	DATE -	REVISED -

**STATE OF ILLINOIS
DEPARTMENT OF TRANSPORTATION**

REMOVAL DETAILS			
SCALE:	SHEET	OF	SHEETS
	STA.	TO	STA.

F.A.I. RE.	SECTION	COUNTY	TOTAL SHEETS	SHEET NO.
70	(25-2)RA-2	EFFINGHAM	26	12
				CONTRACT NO. 74790
ILLINOIS FED. AID PROJECT				

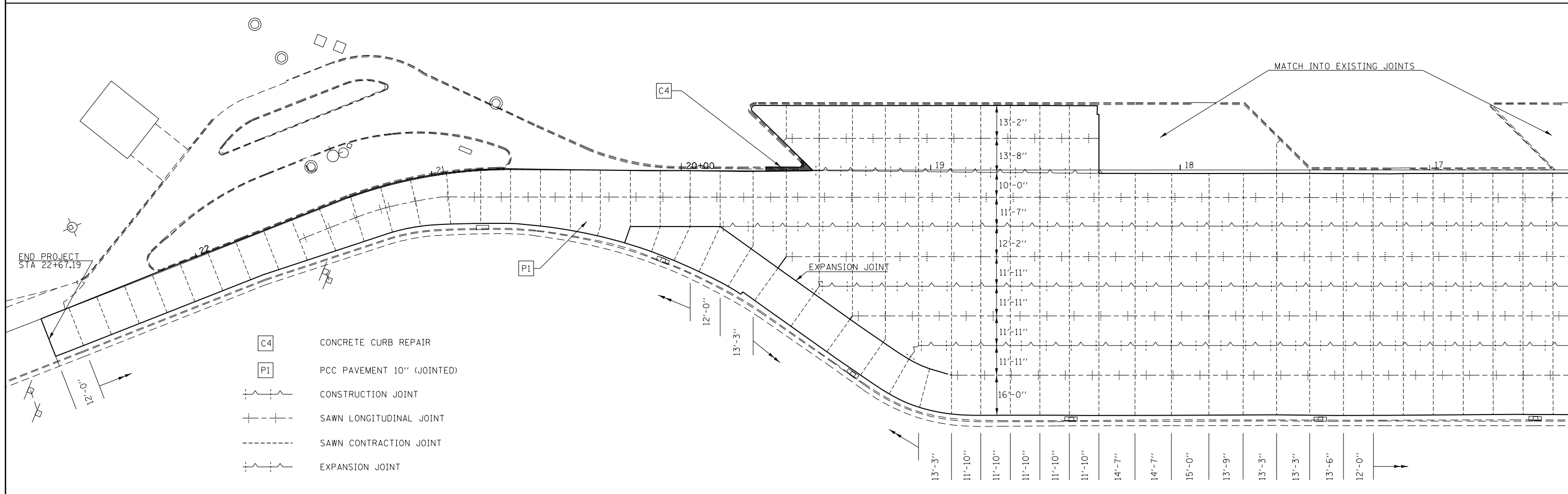
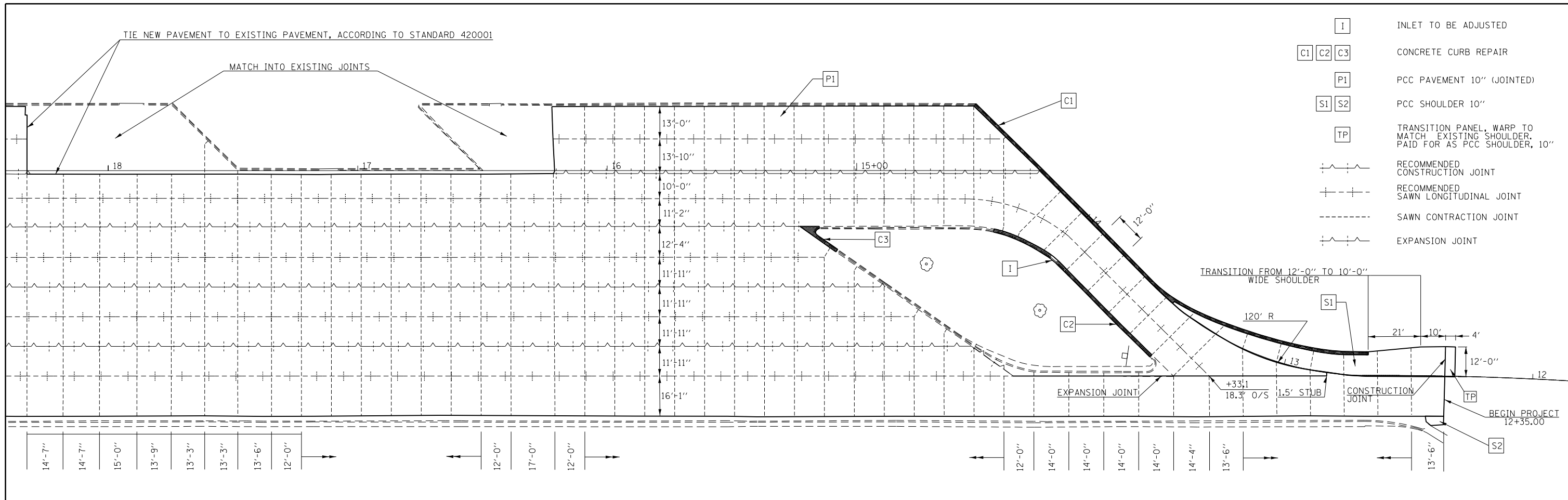


FILE NAME =	USER NAME = walkerr	DESIGNED -	REVISED -
p:\11084EBIDINTEG.illinois.gov\PIWIDOT\Documents\DOT Offices\District 7\Projects\74790\Drawings\CADsheets\0774790-sht-removal.dwg		DRAWN -	REVISED -
Default	PLOT SCALE = 20.0000' / in.	CHECKED -	REVISED -
	PLOT DATE = 2/24/2017	DATE -	REVISED -

**STATE OF ILLINOIS
DEPARTMENT OF TRANSPORTATION**

REMOVAL DETAILS			
SCALE:	SHEET	OF	SHEETS
	STA.		TO STA.

F.A.I. RTE.	SECTION	COUNTY	TOTAL SHEETS	SHEET NO.
70	(25-2)RA-2	EFFINGHAM	26	13
			CONTRACT NO. 74790	
ILLINOIS FED. AID PROJECT				

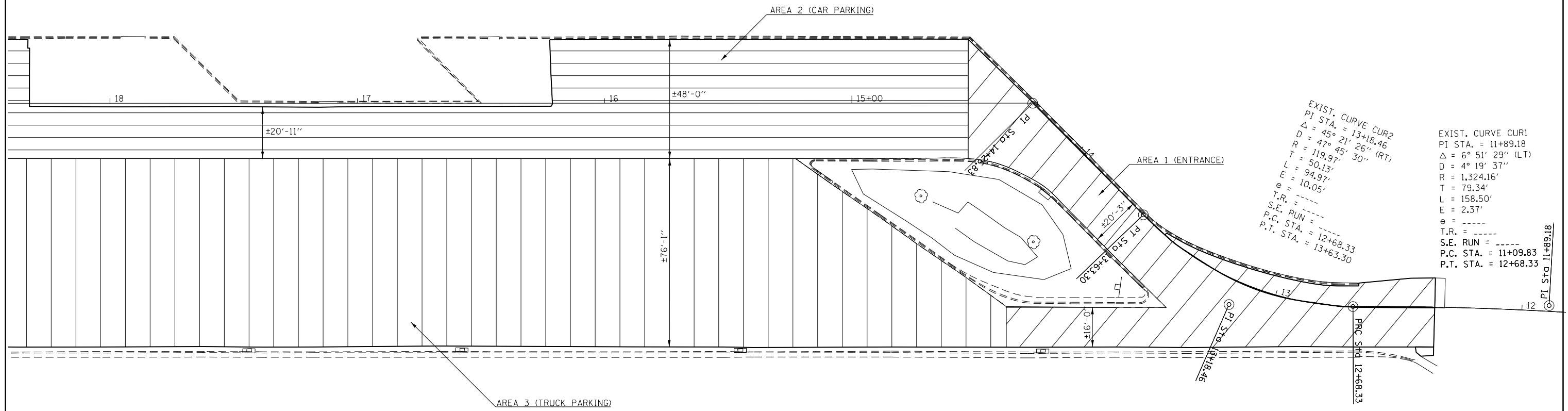


FILE NAME =	USER NAME = steffenk	DESIGNED -	REVISED -
pw:\IL\084EBIDINTEG.illinois.gov\PI\DOT\Documents\DOT Offices\District 7\Projects\74790\Drawings\CAD\Sheets\D774790-Plan & Joint		DRAWN -	REVISED -
		CHECKED -	REVISED -
Default	PLOT DATE = 2/9/2017	DATE -	REVISED -

**STATE OF ILLINOIS
DEPARTMENT OF TRANSPORTATION**

PLAN AND JOINT DETAILS			
SCALE:	SHEET	OF SHEETS	STA. TO STA.

F.A.I. RE.	SECTION	COUNTY	TOTAL SHEETS	SHEET NO.
70	(25-2)RA-2	EFFINGHAM	26	14
CONTRACT NO. 74790				
ILLINOIS FED. AID PROJECT				



EXIST. CURVE CUR2
 PI STA. = 13+18.46
 $\Delta = 45^\circ 21' 26''$ (RT)
 $D = 47^\circ 45' 30''$ (RT)
 $R = 119.97'$
 $T = 50.13'$
 $L = 94.97'$
 $e = 10.05'$
 $T.R. = \text{---}$
 $S.E. \text{ RUN} = \text{---}$
 $P.C. \text{ STA.} = 12+68.33$
 $P.T. \text{ STA.} = 13+63.30$

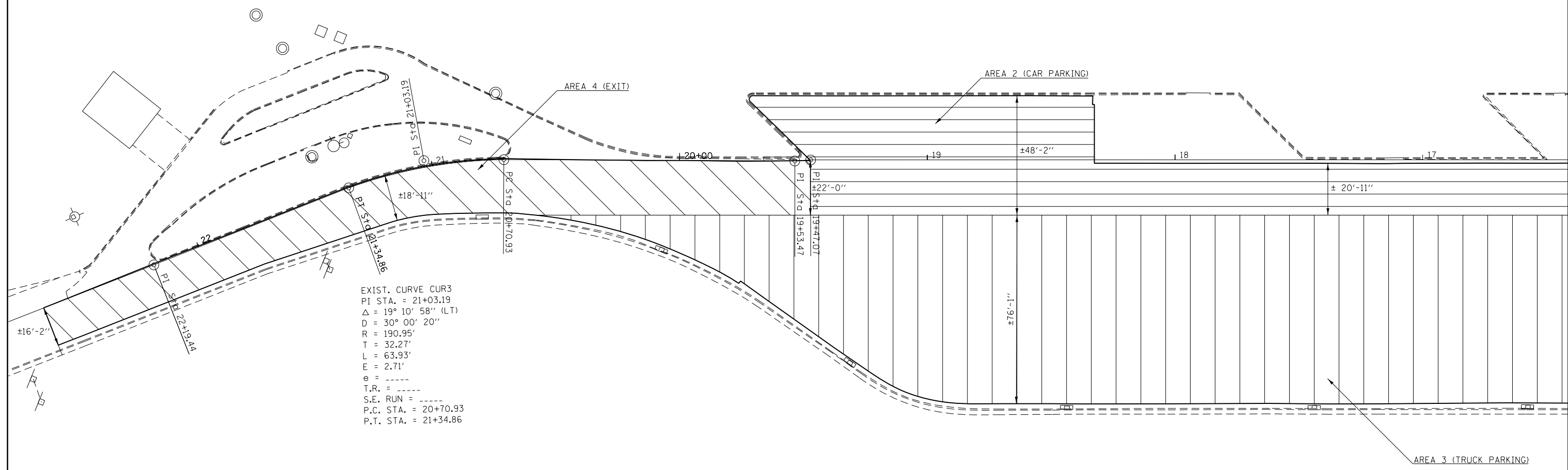
EXIST. CURVE CUR1
 PI STA. = 11+89.18
 $\Delta = 6^\circ 51' 29''$ (LT)
 $D = 4^\circ 19' 37''$
 $R = 1,324.16'$
 $T = 79.34'$
 $L = 158.50'$
 $E = 2.37'$
 $e = \text{---}$
 $S.E. \text{ RUN} = \text{---}$
 $P.C. \text{ STA.} = 11+09.83$
 $P.T. \text{ STA.} = 12+68.33$

FILE NAME =	USER NAME = steffenk	DESIGNED -	REVISED -
pw:\IL084EBIDINTEG.illinois.gov\PI\DOT\Documents\DOT Offices\District 7\Projects\74790\Drawings\CAD\Sheets\0774790-Ties, Benchmarks\Electric Details.dgn		DRAWN -	REVISED -
Default	PLOT SCALE = 40.0000' / in.	CHECKED -	REVISED -
	PLOT DATE = 2/9/2017	DATE -	REVISED -

STATE OF ILLINOIS
DEPARTMENT OF TRANSPORTATION

GEOMETRIC DETAILS	
SCALE:	SHEET OF SHEETS STA. TO STA.

F.A.I. RTE.	SECTION	COUNTY	TOTAL SHEETS	SHEET NO.
70	(25-2)RA-2	EFFINGHAM	26	15
CONTRACT NO. 74790				
ILLINOIS FED. AID PROJECT				



EXIST. CURVE CUR3
 PI STA. = 21+03.19
 $\Delta = 19^\circ 10' 58''$ (LT)
 $D = 30^\circ 00' 20''$
 $R = 190.95'$
 $T = 32.27'$
 $L = 63.93'$
 $E = 2.71'$
 $e = \text{-----}$
 $T.R. = \text{-----}$
 $S.E. RUN = \text{-----}$
 $P.C. STA. = 20+70.93$
 $P.T. STA. = 21+34.86$

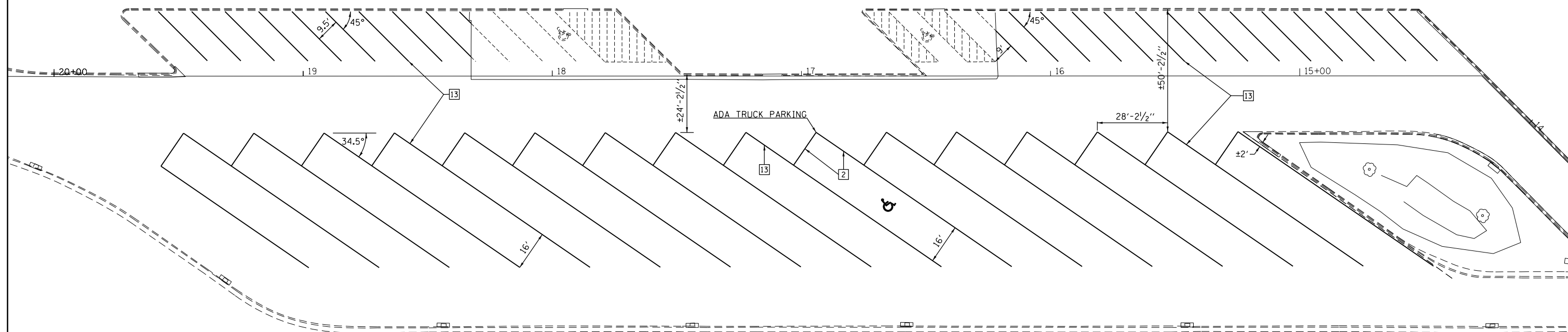
FILE NAME =	USER NAME = steffenk	DESIGNED -	REVISED -
pw:\IL\084EBIDINTEG.illinois.gov\PI\DOT\Documents\DOT Offices\District 7\Projects\74790\Drawings\CAD\Sheets\0774790-Ties, Benchmarks\Electric Details.dgn		DRAWN -	REVISED -
Default	PLOT SCALE = 40.0000' / in.	CHECKED -	REVISED -
	PLOT DATE = 2/9/2017	DATE -	REVISED -

STATE OF ILLINOIS
DEPARTMENT OF TRANSPORTATION

GEOMETRIC DETAILS

SCALE: SHEET OF SHEETS STA. TO STA.

F.A.I. RTE.	SECTION	COUNTY	TOTAL SHEETS	SHEET NO.
70	(25-2)RA-2	EFFINGHAM	26	16
CONTRACT NO. 74790			ILLINOIS FED. AID PROJECT	



PAVEMENT MARKING LEGEND

- 2 4" (100) SOLID (YELLOW)
- 13 4" (100) PARKING WHITE

NOTE: MEASUREMENTS ARE FROM THE FACE OF CURB

FILE NAME =	USER NAME = steffenmk	DESIGNED -	REVISED -
pw:\IL\084EBIDINTEG.illinois.gov\PWIDOT\Documents\IDOT Offices\District 7\Projects\74790\Drawings\CAD\Drawings\0774790-sht-pvt.mxd		DRAWN -	REVISED -
Default	PLOT SCALE = 40.0000' / in.	CHECKED -	REVISED -
	PLOT DATE = 2/9/2017	DATE -	REVISED -

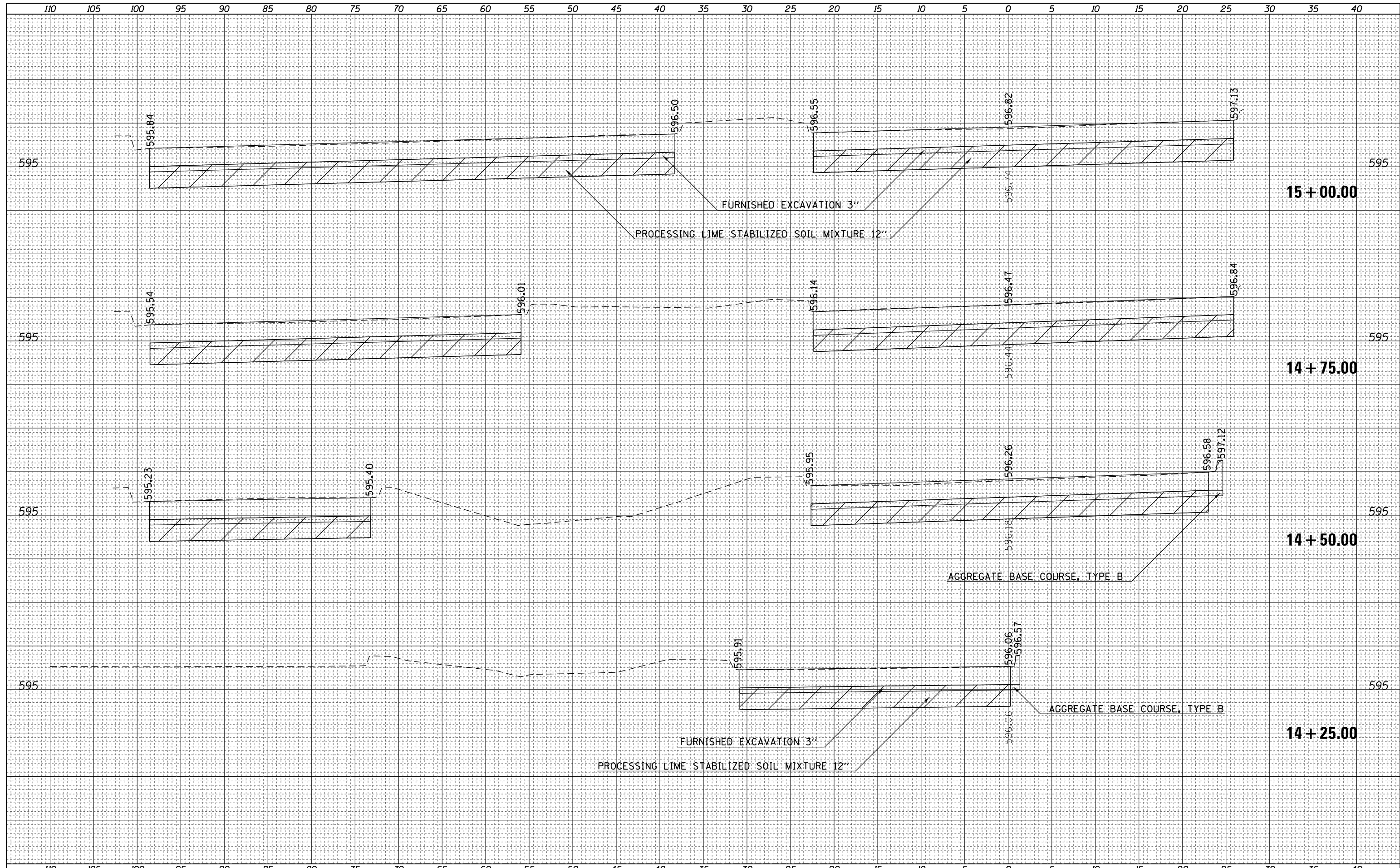
**STATE OF ILLINOIS
DEPARTMENT OF TRANSPORTATION**

PAVEMENT MARKING DETAILS			
SCALE:	SHEET	OF SHEETS	STA. TO STA.

F.A.I. RTE.	SECTION	COUNTY	TOTAL SHEETS	SHEET NO.
70	(25-2)RA-2	EFFINGHAM	26	17
				CONTRACT NO. 74790
ILLINOIS FED. AID PROJECT				

DATE	
BY	
FINAL SURVEY	SURVEYED
NOTE BOOK	PLOTTED
NO.	TEMPLATE
	AREAS
	CHECKED

DATE	
BY	
ORIGINAL SURVEY	SURVEYED
NOTE BOOK	PLOTTED
NO.	TEMPLATE
	AREAS
	CHECKED



FILE NAME =
 p:\11084EBIDINTEG\Illinois.gov\PIDOT\Documents\IDOT Offices\District 7\Projects\74790\CADD\Drawings\Sheets\0774790-sht-xxsht.dgn
 Default

USER NAME = steffennk
 DESIGNED -
 PLOT SCALE = 10.0000' / in.
 PLOT DATE = 2/9/2017

DESIGNED -
 CHECKED -
 DATE -

REVISÉD -
 REVISÉD -
 REVISÉD -
 REVISÉD -

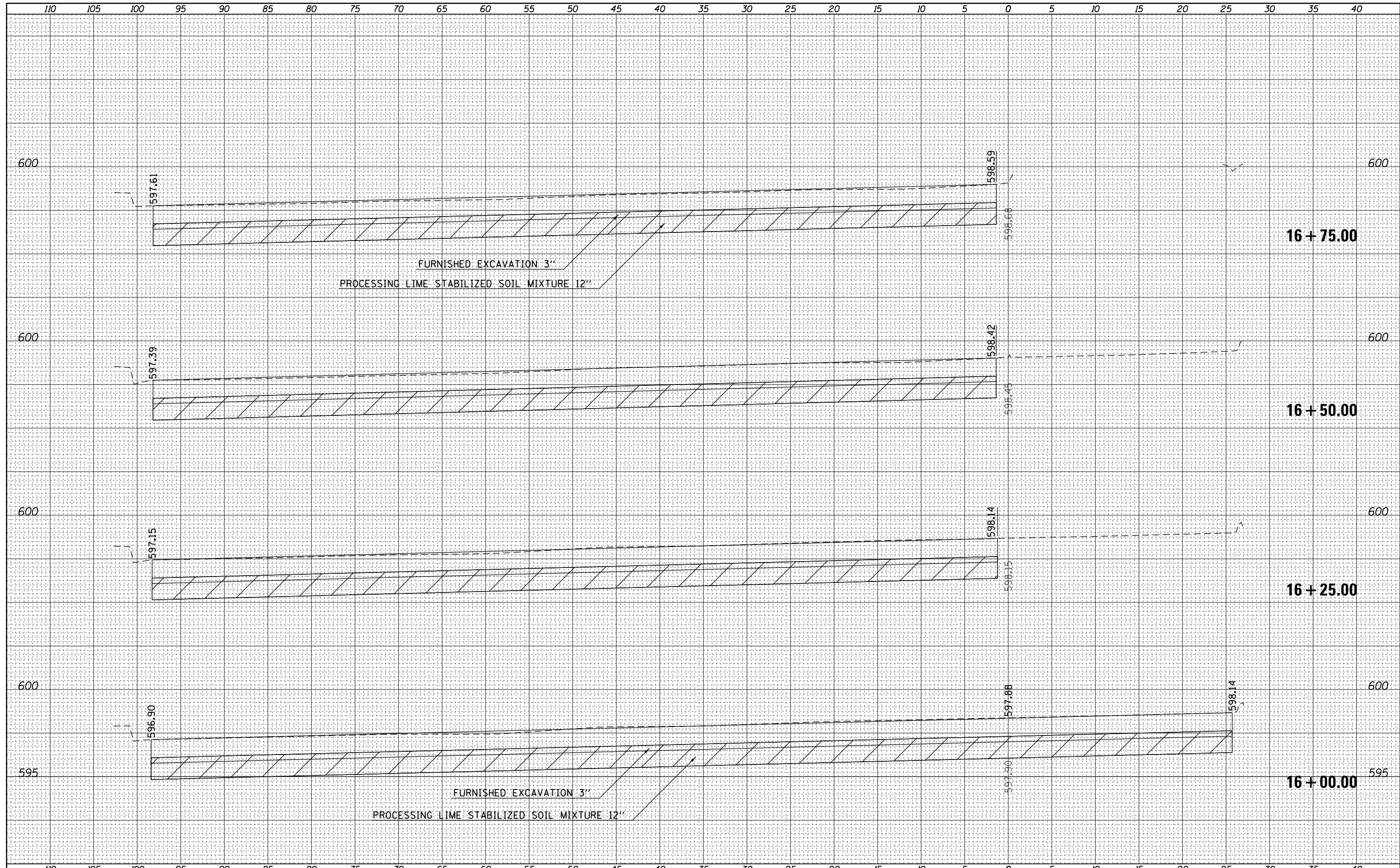
**STATE OF ILLINOIS
 DEPARTMENT OF TRANSPORTATION**

CROSS SECTIONS
 SCALE: SHEET OF SHEETS STA. 14+25.00 TO STA. 15+00.00

F.A.I. RTE.	SECTION	COUNTY	TOTAL SHEETS	SHEET NO.
70	(25-2)RA-2	EFFINGHAM	26	20
CONTRACT NO. 74790				
ILLINOIS FED. AID PROJECT				

DATE	
BY	
ORIGINAL SURVEY	SURVEYED
NOTE BOOK	PLOTTED
NO.	TEMPLATE
	AREAS CHECKED
	AREAS CHECKED

DATE	
BY	
ORIGINAL SURVEY	SURVEYED
NOTE BOOK	PLOTTED
NO.	TEMPLATE
	AREAS CHECKED
	AREAS CHECKED



FILE NAME =	USER NAME = steffennk	DESIGNED -	REVISD -	F.A.I. RTE.	SECTION	COUNTY	TOTAL SHEETS	SHEET NO.
p:\11084EBIDINTEG\Illinois.gov\PIDOT\Documents\DOT Offices\District 7\Projects\74790\CADD\Drawings\Drawings\74790-sht-xssht.dgn		DRAWN	REVISD -	70	(25-2)RA-2	EFFINGHAM	26	22
PLOT SCALE = 10.0000' / in.	CHECKED -	REVISD -	REVISD -	CONTRACT NO. 74790				
Default	DATE - 2/9/2017	DATE -	REVISD -	ILLINOIS FED. AID PROJECT				

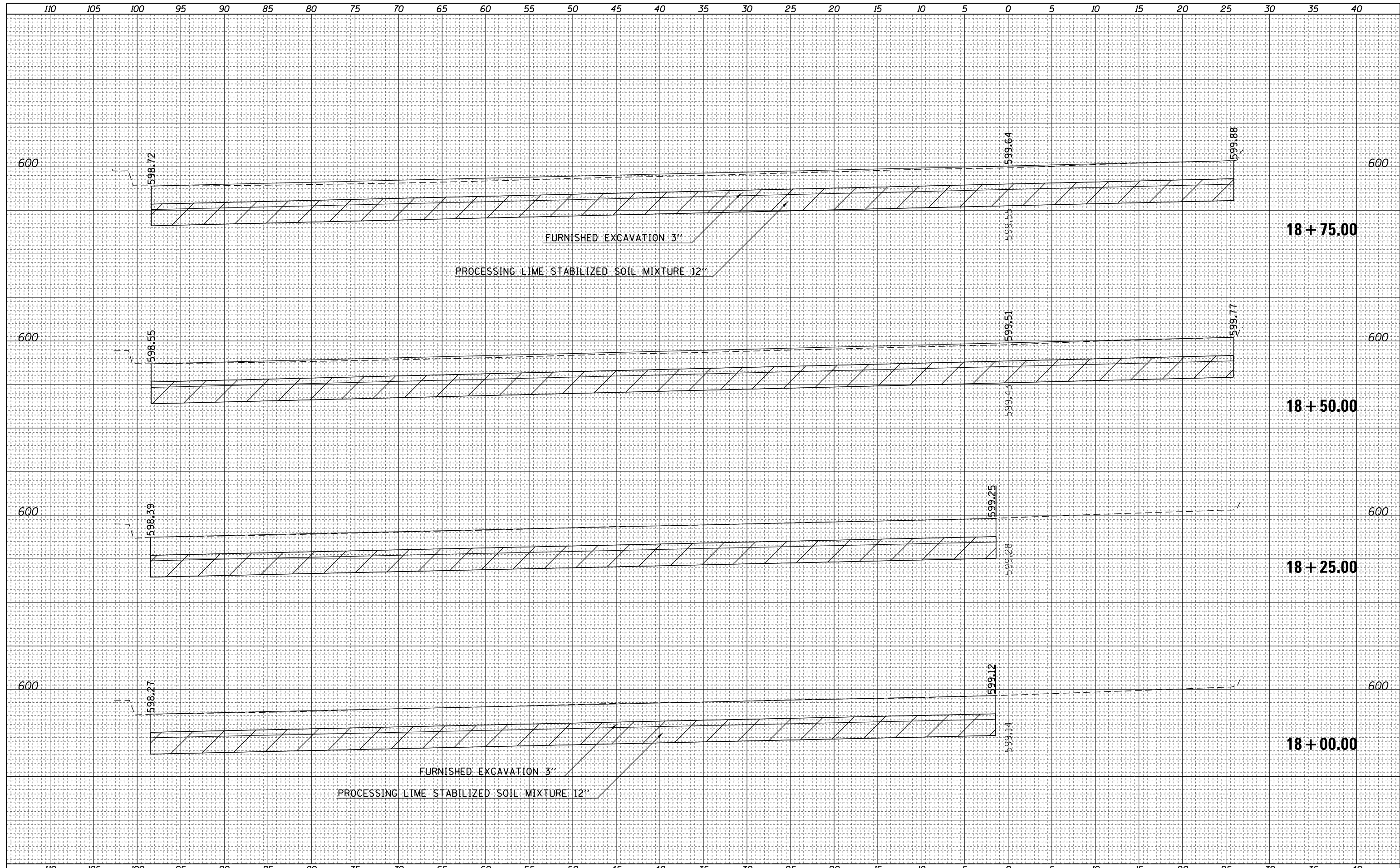
**STATE OF ILLINOIS
DEPARTMENT OF TRANSPORTATION**

CROSS SECTIONS

SCALE: SHEET OF SHEETS STA. 16+00.00 TO STA. 16+75.00

DATE	
BY	
FINAL SURVEY	SURVEYED
NOTE BOOK	PLOTTED
NO.	TEMPLATE
	AREAS CHECKED
	AREAS CHECKED

DATE	
BY	
ORIGINAL SURVEY	SURVEYED
NOTE BOOK	PLOTTED
NO.	TEMPLATE
	AREAS CHECKED
	AREAS CHECKED



FILE NAME =	USER NAME = steffennk	DESIGNED -	REVISOR -	F.A.I. RTE.	SECTION	COUNTY	TOTAL SHEETS	SHEET NO.
p:\11084EBIDINTEG\Illinois.gov\PIDOT\Documents\DOT Offices\District 7\Projects\74790\CADD\Drawings\Drawings\74790-26-24\74790-26-24-24.dwg		DRAWN -	REVISOR -	70	(25-2)RA-2	EFFINGHAM	26	24
PLOT SCALE = 10.0000' / in.	CHECKED -	REVISOR -	REVISOR -	CONTRACT NO. 74790				
Default	DATE -	REVISOR -	REVISOR -	SCALE:	SHEET	OF	SHEETS	STA. 18+00.00 TO STA. 18+75.00
				ILLINOIS FED. AID PROJECT				

**STATE OF ILLINOIS
DEPARTMENT OF TRANSPORTATION**

CROSS SECTIONS

