

STATE OF ILLINOIS
DIVISION OF HIGHWAYS

| ROUTE NO. | SECTION | COUNTY | TOTAL SHEETS | SHEET NO. |
|---------------------|----------------|-----------------------|--------------|-----------|
| C.H. 17 | 15-00181-00-RS | STARK | 6 | 1 |
| FED. ROAD DIST. NO. | | ILLINOIS CONTRACT NO. | 89696 | |

INDEX OF SHEETS

| SHEET NO. | DESCRIPTION |
|-----------|---|
| 1. | COVER SHEET |
| 2. | SUMMARY OF QUANTITIES AND GENERAL NOTES |
| 3-4. | TYPICAL CROSS SECTIONS |
| 5. | INTERSECTION DETAILS |
| 6. | SCHEDULE OF QUANTITIES |

HIGHWAY STANDARDS:

| | |
|-----------|---|
| 000001-06 | STANDARD SYMBOLS, ABBREVIATIONS, AND PATTERNS |
| 701901-06 | TRAFFIC CONTROL DEVICES |
| 780001-05 | TYPICAL PAVEMENT MARKINGS |
| BLR-21-9 | TYPICAL APPLICATION OF TRAFFIC CONTROL DEVICES FOR CONSTRUCTION ON RURAL LOCAL HIGHWAYS |

PLANS FOR PROPOSED SURFACE TRANSPORTATION PROGRAM-RURAL

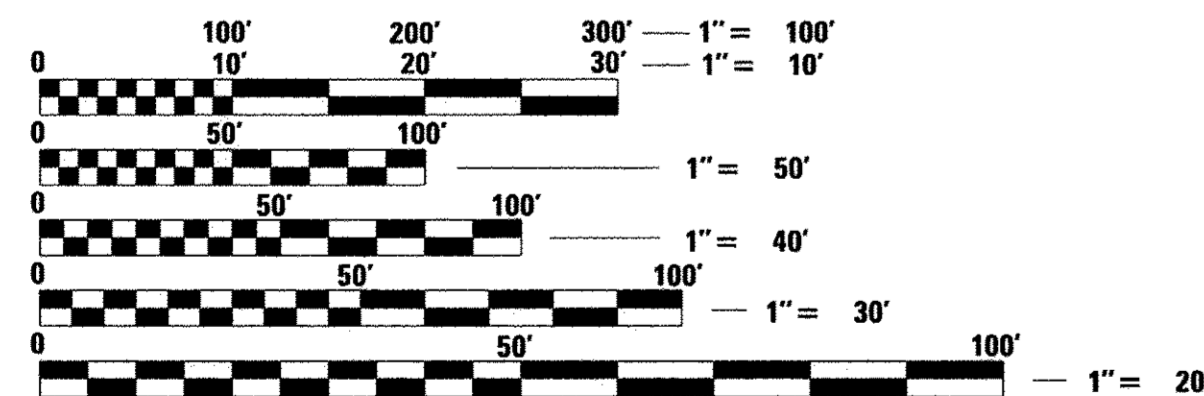
SECTION 15-00181-00-RS
C.H. 17 / HOLMES ROAD
STARK COUNTY
PROJECT RS-0143(064)
C-94-028-16



UTILITIES

FRONTIER COMMUNICATIONS
ENGINEERING DEPARTMENT
104 MULBERRY
NORMAL, ILLINOIS 61671

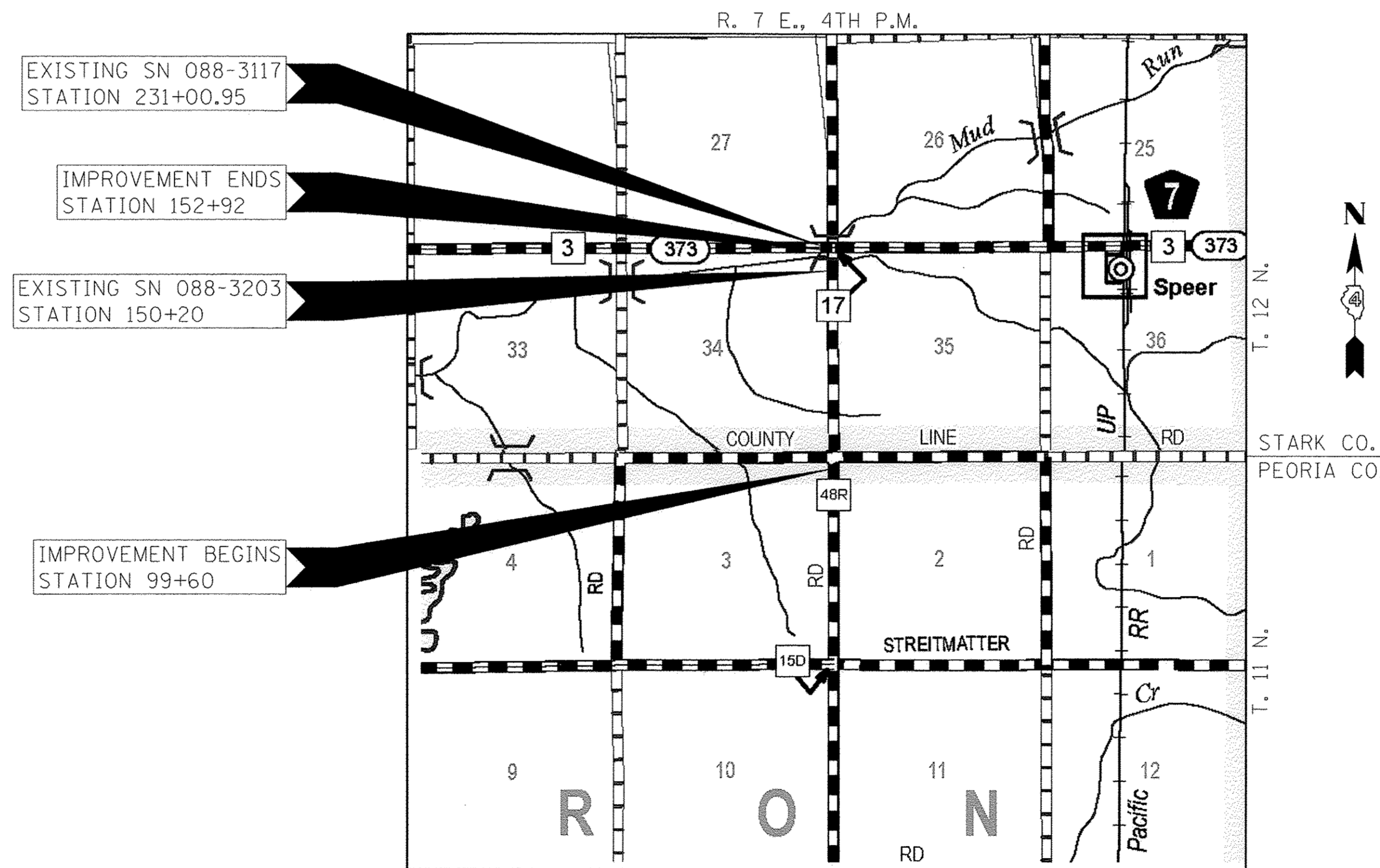
AMEREN
300 LIBERTY STREET
PEORIA, ILLINOIS 61602



FULL SIZE PLANS HAVE BEEN PREPARED USING STANDARD ENGINEERING SCALES. REDUCED SIZED PLANS WILL NOT CONFORM TO STANDARD SCALES. IN MAKING MEASUREMENTS ON REDUCED PLANS, THE ABOVE SCALES MAY BE USED.

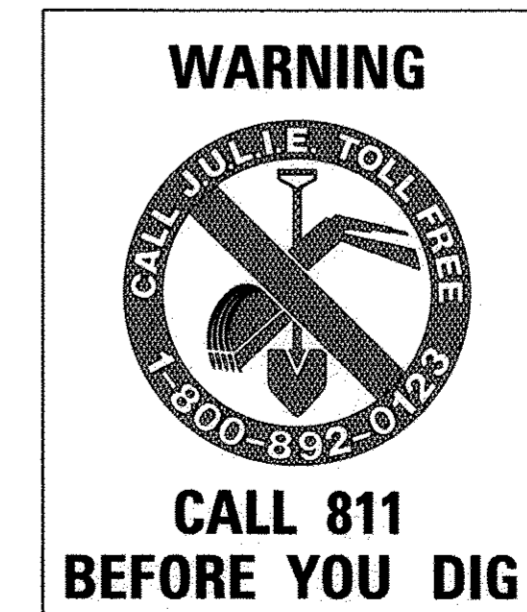
FUNCTIONAL CLASSIFICATION: MAJOR COLLECTOR RURAL
DESIGN SPEED: 50 MPH
DESIGN TRAFFIC: ADT 650 (2013)

CATALOG NO. 035365-00
CONTRACT NO. 89696 PRINTED BY THE AUTHORITY OF THE STATE OF ILLINOIS

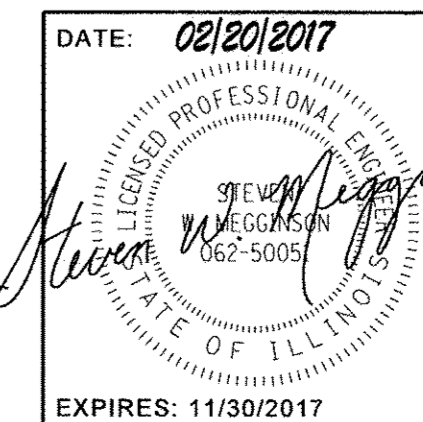


LOCATION MAP

APPROXIMATE SCALE: 0 1/2 MILE
NET LENGTH OF SECTION = 326 FEET = 0.06 MILES C.H. 3
NET LENGTH OF SECTION = 5,332 FEET = 1.01 MILES C.H. 17
GROSS LENGTH OF SECTION = 5,658 FEET = 1.07 MILES



| ILLINOIS DEPARTMENT OF TRANSPORTATION | |
|---|--|
| APPROVED | 2/21/2017 <i>Mark A. Otter</i> COUNTY ENGINEER |
| PASSED | February 23, 2017 <i>M. J. Sabie</i> DISTRICT FOUR ENGINEER OF LOCAL ROADS & STREETS |
| Releasing For Bid Based on Limited Review | February 24, 2017 <i>Dana A. Jones</i> REGION THREE ENGINEER |
| STATE OF ILLINOIS DEPARTMENT OF TRANSPORTATION | |



DATE: 02/20/2017
HAMPTON, LENZINI AND RENWICK, INC.
CIVIL ENGINEERS - STRUCTURAL ENGINEERS - LAND SURVEYORS
3085 STEVENSON DRIVE, SUITE 201
SPRINGFIELD, ILLINOIS 62703
217.546.3400 www.hlrengineering.com
184.000959
ILLINOIS PROFESSIONAL DESIGN FIRM LS / PE / SE CORPORATION

| SUMMARY OF QUANTITIES | | | |
|-----------------------|--|---------------------------|-------|
| CODE NO. | ITEM | CONSTRUCTION CODE 0004 | |
| | | UNIT | TOTAL |
| 20200100 | EARTH EXCAVATION | CU YD | 500 |
| 21001000 | GEOTECHNICAL FABRIC FOR GROUND STABILIZATION | SQ YD | 12880 |
| 30103000 | SHAPING AND GRADING ROADWAY | UNIT | 5 |
| 35101400 | AGGREGATE BASE COURSE, TYPE B | TON | 8068 |
| 40200800 | AGGREGATE SURFACE COURSE, TYPE B | TON | 54 |
| 40600275 | BITUMINOUS MATERIALS (PRIME COAT) | POUND | 26565 |
| 40600295 | POLYMERIZED BITUMINOUS MATERIALS (TACK COAT) | POUND | 5695 |
| 40600982 | HOT-MIX ASPHALT SURFACE REMOVAL - BUTT JOINT | SQ YD | 447 |
| 40600990 | TEMPORARY RAMP | SQ YD | 61 |
| 40603210 | POLYMERIZED HOT MIX ASPHALT BINDER COURSE, IL-9.5, N50 | TON | 1653 |
| 40603510 | POLYMERIZED HOT-MIX ASPHALT SURFACE COURSE, MIX "C", N50 | TON | 1179 |
| 67100100 | MOBILIZATION | L SUM | 1 |
| 70101830 | TRAFFIC CONTROL AND PROTECTION, STANDARD BLR 21 | L SUM | 1 |
| 78001110 | PAINT PAVEMENT MARKING - LINE 4" | FOOT | 12732 |
| 78001180 | PAINT PAVEMENT MARKING - LINE 24" | FOOT | 76 |
| X2501000 | SEEDING, CLASS 2 (SPECIAL) | ACRE | 0.75 |
| Z0013798 | CONSTRUCTION LAYOUT | L SUM | 1 |
| Z0034105 | MATERIAL TRANSFER DEVICE | TON | 2832 |

^ SEE SPECIAL PROVISIONS

* SPECIALTY ITEMS

GENERAL NOTES

- ALL CONSTRUCTION SHALL BE DONE IN ACCORDANCE WITH THE STATE OF ILLINOIS "STANDARD SPECIFICATIONS FOR ROAD AND BRIDGE CONSTRUCTION ADOPTED APRIL 1, 2016," THESE PLANS AND THE SPECIAL PROVISIONS INCLUDED IN THE CONTRACT DOCUMENTS.
- WHERE SECTION OR SUBSECTION MONUMENTS ARE ENCOUNTERED, THE ENGINEER SHALL BE NOTIFIED BEFORE SUCH MONUMENTS ARE REMOVED. THE CONTRACTOR SHALL PROTECT AND CAREFULLY PRESERVE ALL PROPERTY MARKS AND MONUMENTS UNTIL THE OWNER, AN AUTHORIZED SURVEYOR OR AGENT HAS WITNESSED OR OTHERWISE REFERENCED THEIR LOCATION.
- THE LOCATION OF EXISTING GAS MAINS, ELECTRIC POWER LINES, TELEPHONE LINES AND OTHER UTILITIES HAS NOT BEEN PREDETERMINED. BASED ON CAREFUL FIELD INVESTIGATIONS AND THE BEST INFORMATION AVAILABLE, BUT THE LOCATIONS ARE NOT GUARANTEED. IT SHALL THE CONTRACTOR SHALL ASCERTAIN THEIR EXACT LOCATION FROM THE INDIVIDUAL UTILITY COMPANIES AND BY FIELD INSPECTION.
- THE FOLLOWING RATES OF APPLICATION HAVE BEEN USED IN CALCULATING PLAN QUANTITIES:

| | |
|---|--------------------------------------|
| AGGREGATE SURFACE AND BASE COURSES | 2.05 TON/CU YD |
| HOT MIX ASPHALT | 112 LBS/SQ YD./INCH THICKNESS |
| AGGR WEDGE SHOULDER, TYPE B | 2.05 TON/CU YD |

POLYMERIZED BITUMINOUS MATERIALS RATES

| SURFACE TYPE | RESIDUAL RATE |
|-------------------------------|----------------|
| AGGREGATE BASE | 0.250 LB/SQ FT |
| MILLED HMA OR PCC (TACK COAT) | 0.080 LB/SQ FT |
| EXISTING PAVEMENT (TACK COAT) | 0.080 LB/SQ FT |
| TACK COAT (BETWEEN LIFTS) | 0.040 LB/SQ FT |

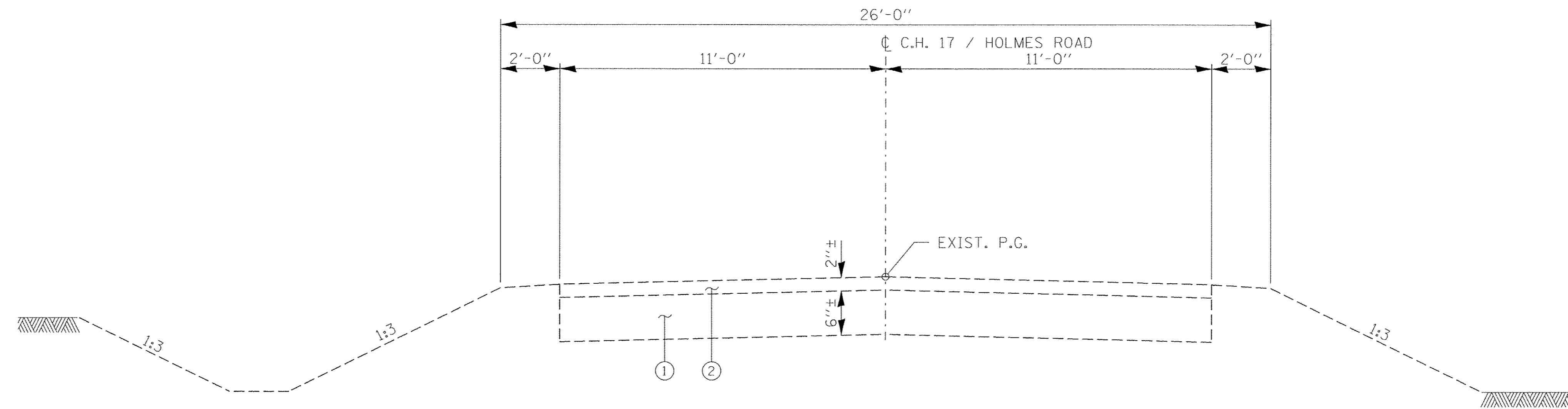
- THE AREA TO BE SEEDED SHALL CONSIST OF ALL DISTURBED EARTH SURFACES WITHIN THE RIGHT OF WAY OR AS DIRECTED BY THE ENGINEER. SEEDING, CLASS 2 (SPECIAL) = 0.75 ACRES
- THE ROAD SHALL BE CLOSED TO ALL TRAFFIC DURING CONSTRUCTION.
- PAVEMENT REMOVAL AND AGGREGATE WEDGE SHOULDERS SHALL BE COMPLETED BY OTHERS.

HMA MIXTURE REQUIREMENTS

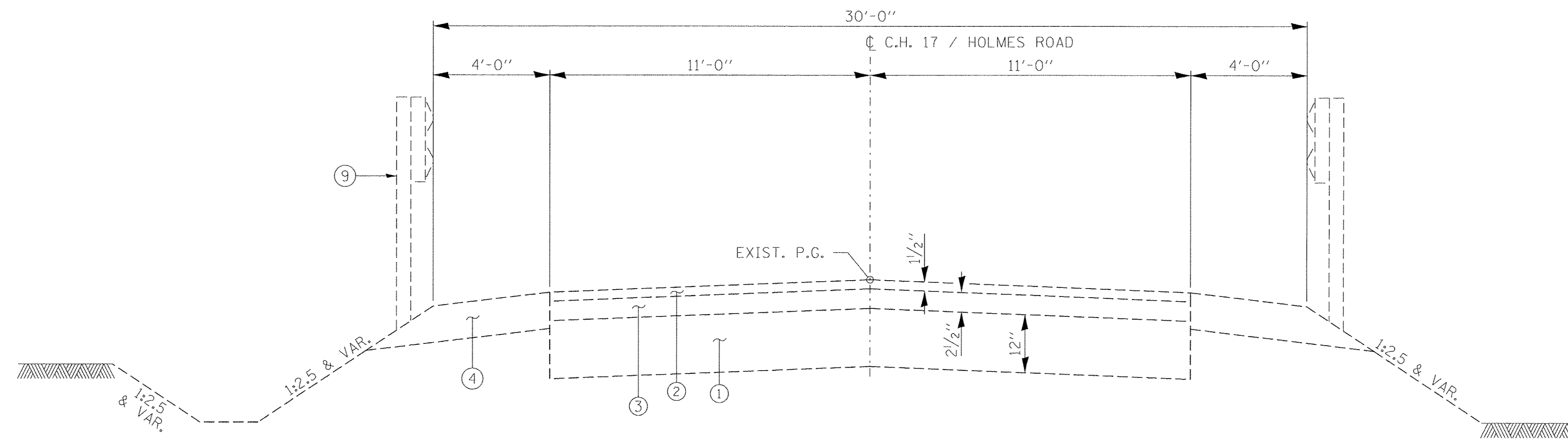
| MIXTURE USE(S): | SURFACE COURSE | BINDER COURSE |
|--|-------------------------------|-------------------------------|
| PG: | SBS OR SBR 76-28 | SBS OR SBR 76-28 |
| DESIGN AIR VOIDS: | 4% @ Ndes 50 | 4% @ Ndes 50 |
| MIXTURE COMPOSITION: (GRADATION MIXTURE): | IL 9.5 | IL 9.5 |
| FRICITION AGGREGATE: | MIXTURE C | NONE |
| MIXTURE WEIGHTS: | 112 LBS \ SY \ INCH THICKNESS | 112 LBS \ SY \ INCH THICKNESS |
| QUALITY CONTROL PROGRAM: | QC/QA | QC/QA |
| SUBLOT SIZE | N.A. | N.A. |

PAVEMENT DESIGN (NON MECHANISTIC)

DESIGN PERIOD 15 YEARS 0
STRUCTURAL DESIGN TRAFFIC (SDT) = 2024 (766)
PV = 1834 SU = 61 MU = 46
ROAD/STREET CLASSIFICATION: CLASS III
PERCENT OF STRUCTURAL DESIGN TRAFFIC IN DESIGN LANE
P = 50% S = 50% MU = 50%
TRAFFIC FACTOR ACTUAL TF 0.18



EXISTING TYPICAL CROSS SECTION
STA. 99+60.0 TO STA. 148+70.0

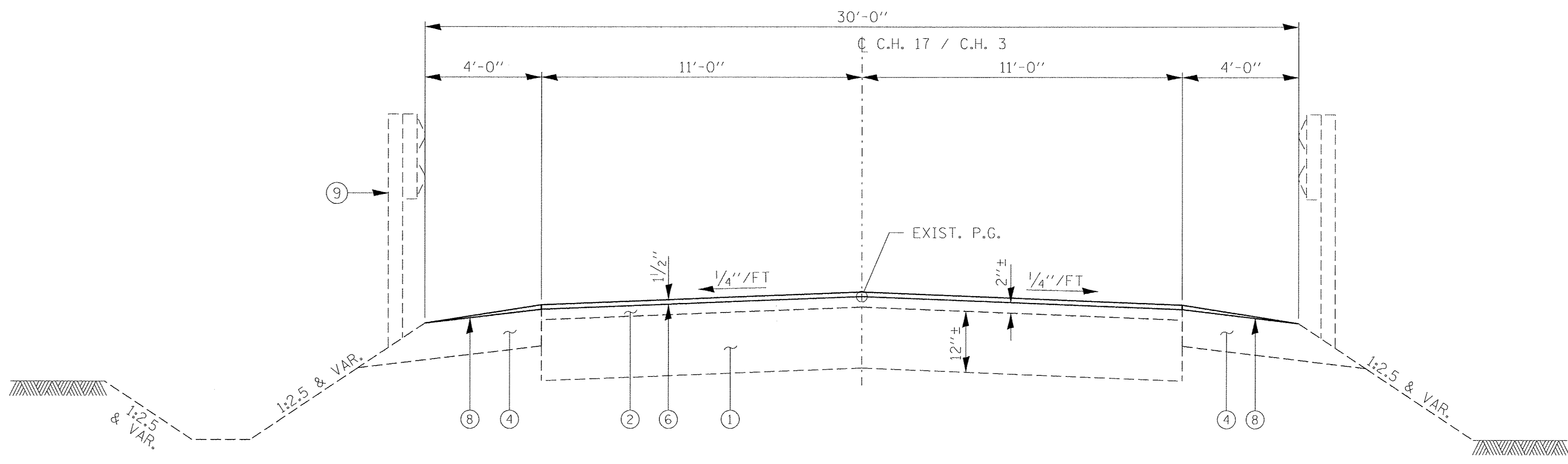
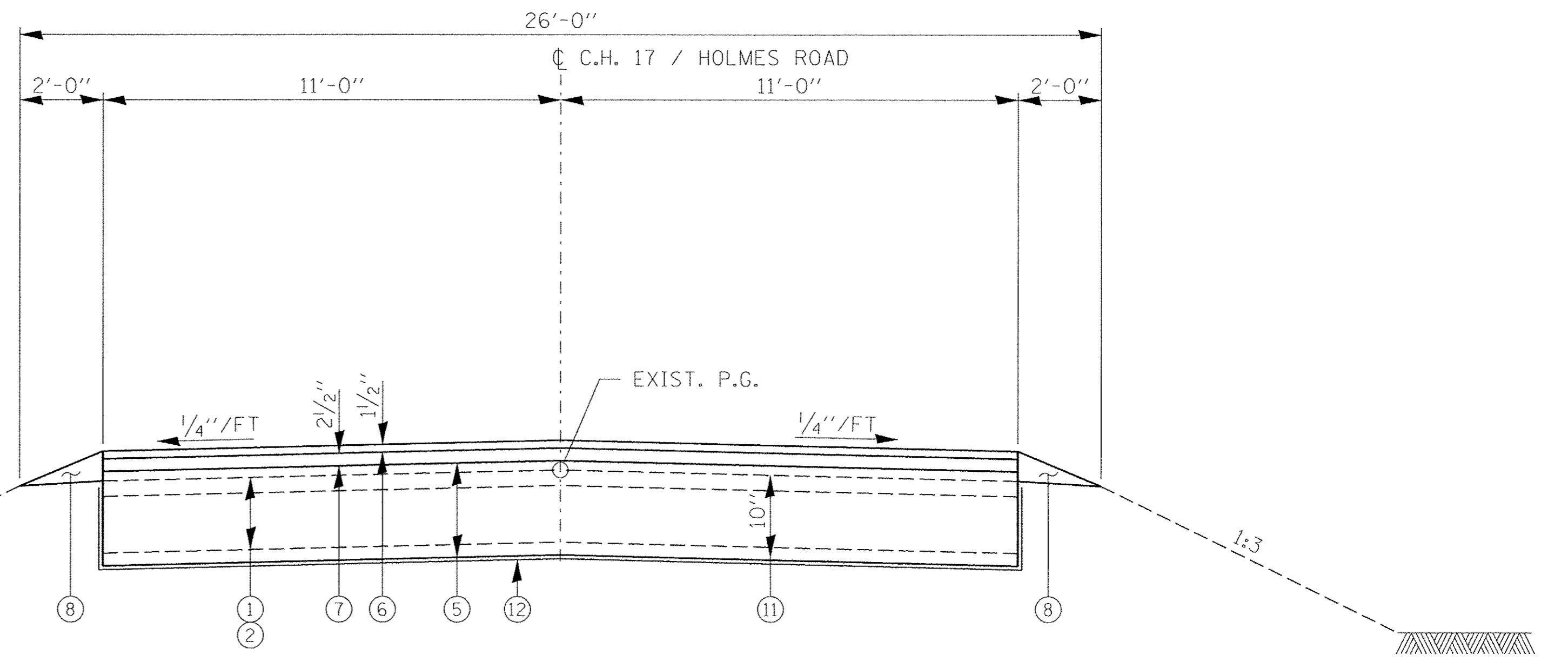
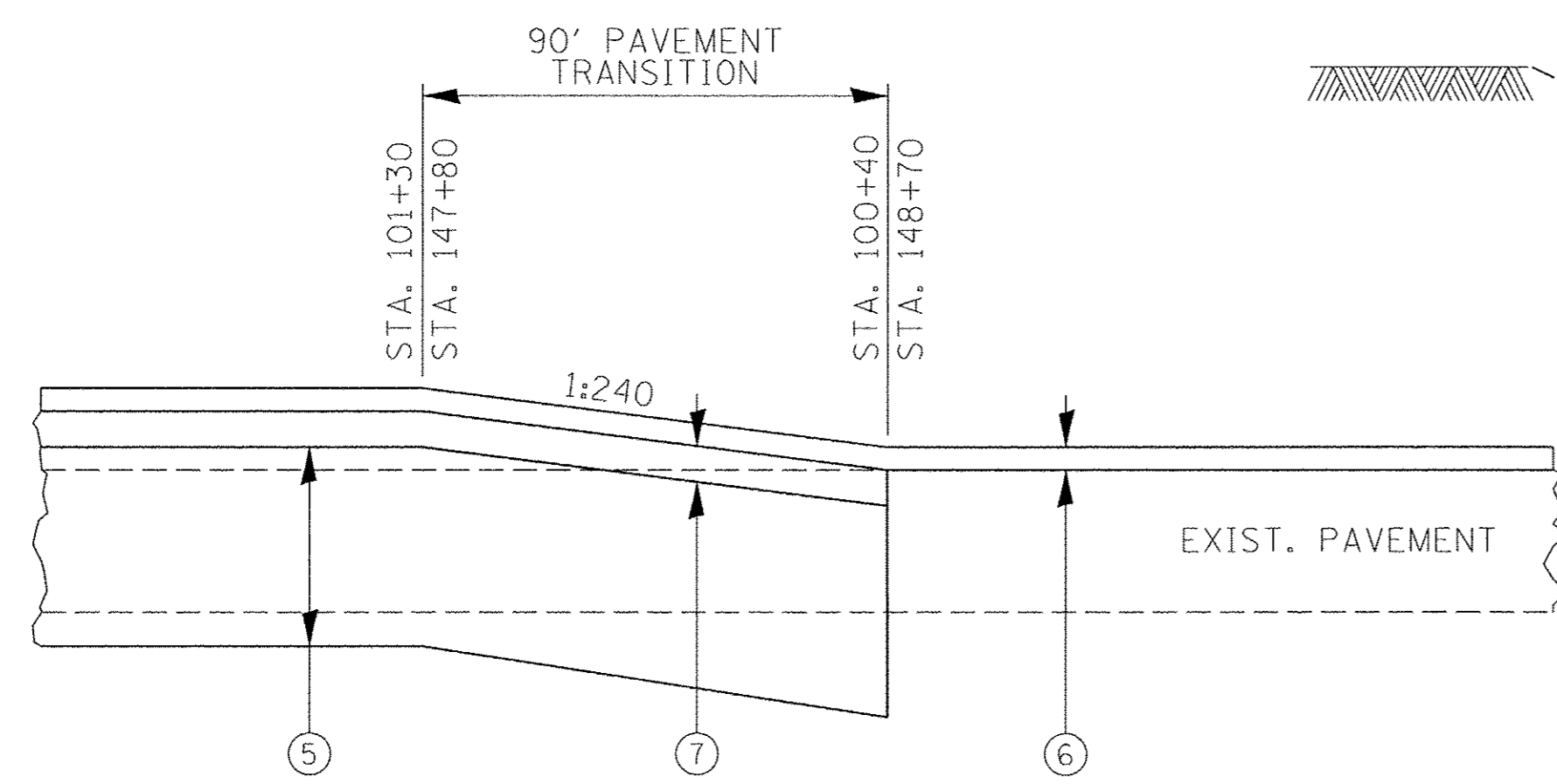
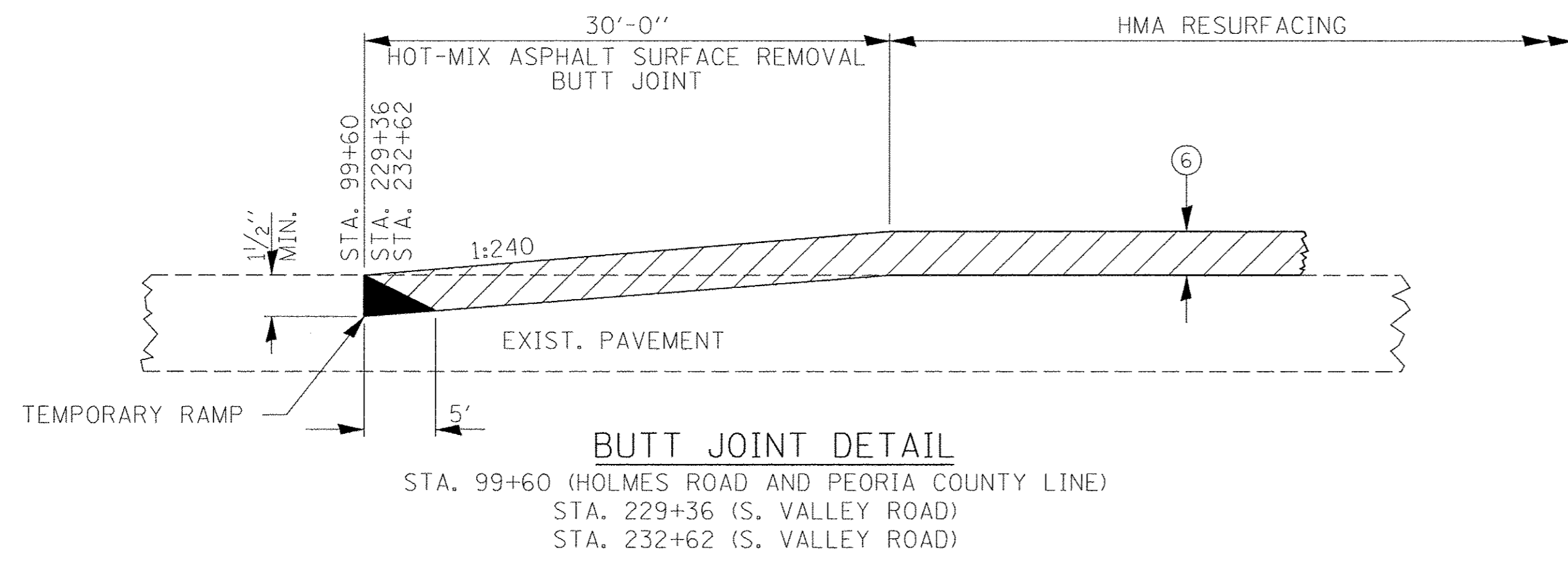


EXISTING TYPICAL CROSS SECTION
STA. 148+70.0 TO STA. 152+20.0

LEGEND

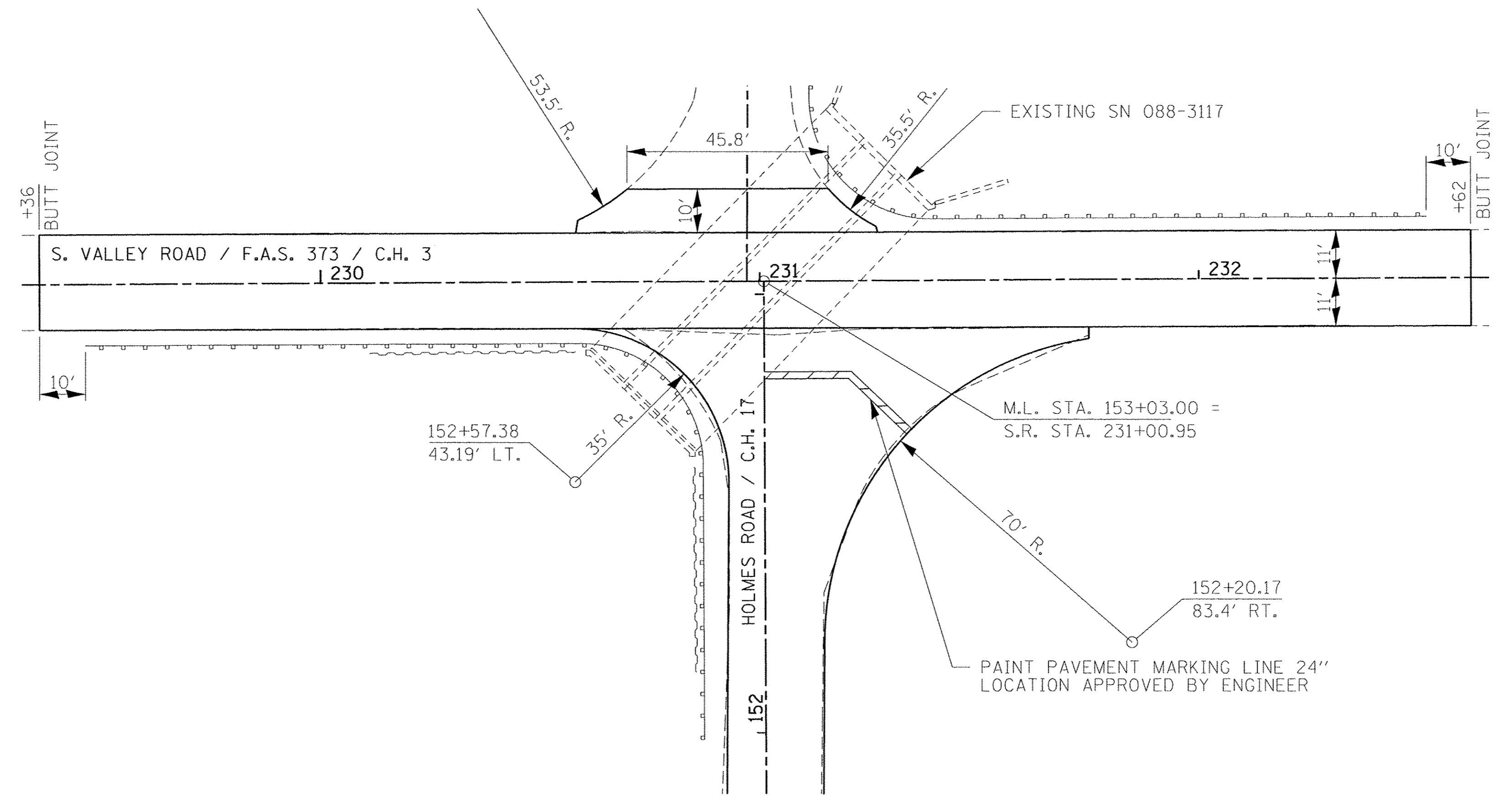
- ① EXISTING AGG. BASE
- ② EXISTING BIT. SURF. CSE.
- ③ EXISTING BIT. BIND. CSE.
- ④ EXISTING AGG. SHOULDER
- ⑤ AGGREGATE BASE COURSE (12")
- ⑥ POLYMERIZED HOT-MIX ASPHALT SURF. CSE., MIX "C", N50 (1 1/2")
- ⑦ POLYMERIZED HOT-MIX ASPHALT BINDER CSE., IL-9.5 N50 (2 1/2")
- ⑧ AGG. WEDGE SHOULDER (BY OTHERS)
- ⑨ EXIST. STEEL PLATE BEAM GUARDRAIL / TRAFFIC BARRIER TERMINAL
- ⑩ HMA SURFACE REMOVAL
- ⑪ PAVEMENT REMOVAL (BY OTHERS)
- ⑫ GEOTECHNICAL FABRIC FOR GROUND STABILIZATION

| | | | | | | | | | | | |
|---|----------------------|-------------------|-----------|--|---|--|-------------------------|----------------|--------|--------------|---------------------------|
| FILE NAME = 160095-sht-typsections.dgn | USER NAME = #USER# | DESIGNED - L.A.P. | REVISED - | STATE OF ILLINOIS STARK COUNTY HIGHWAY DEPARTMENT | TYPICAL CROSS SECTIONS C.H. 17 / HOLMES ROAD | | C.H. | SECTION | COUNTY | TOTAL SHEETS | SHEET NO. |
| HAMPTON, LENZINI AND RENWICK, INC. 3085 STEVENSON DRIVE, SUITE 201 SPRINGFIELD, ILLINOIS 62703 ILLINOIS PROFESSIONAL DESIGN FIRM LS/PE/SE CORP. 184.000958 | PLOT SCALE = #SCALE# | DRAWN - D.A.B. | REVISED - | | | | 17 | 15-00181-00-RS | STARK | 6 | 3 |
| PLOT DATE = 2/20/2017 | DATE - 02/20/17 | CHECKED - S.W.M. | REVISED - | | SCALE: | | SHEET NO. 1 OF 2 SHEETS | | STA. | TO STA. | ILLINOIS FED. AID PROJECT |
| | | | | | | | | | | | CONTRACT NO. 89696 |

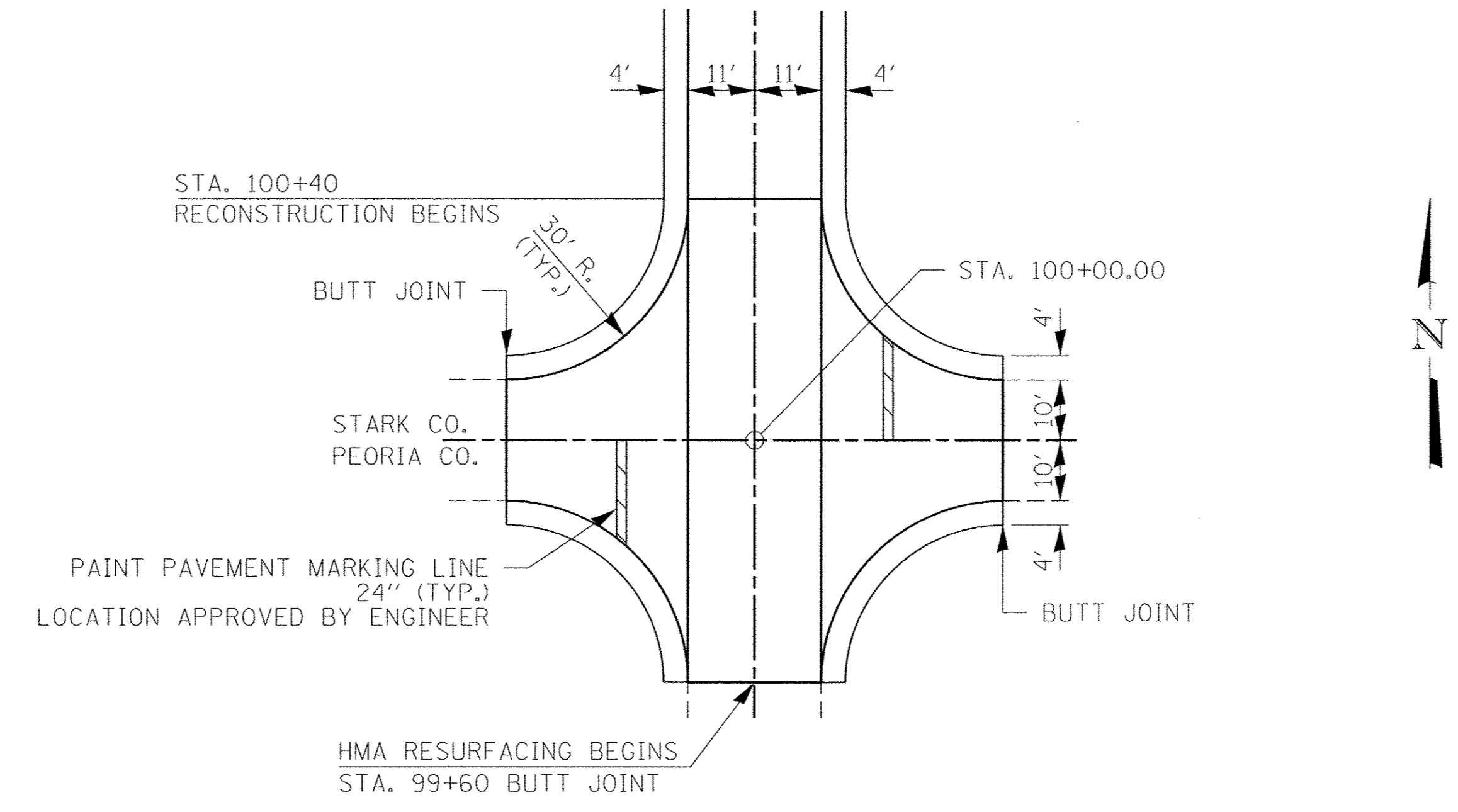


- LEGEND**
- ① EXISTING AGG. BASE
 - ② EXISTING BIT. SURF. CSE.
 - ③ EXISTING BIT. BIND. CSE.
 - ④ EXISTING AGG. SHOULDER
 - ⑤ AGGREGATE BASE COURSE (12")
 - ⑥ POLYMERIZED HOT-MIX ASPHALT SURF. CSE., MIX "C", N50 (1 1/2")
 - ⑦ POLYMERIZED HOT-MIX ASPHALT BINDER CSE., IL-9.5 N50 (2 1/2")
 - ⑧ AGG. WEDGE SHOULDER (BY OTHERS)
 - ⑨ EXIST. STEEL PLATE BEAM GUARDRAIL / TRAFFIC BARRIER TERMINAL
 - ⑩ HMA SURFACE REMOVAL
 - ⑪ PAVEMENT REMOVAL (BY OTHERS)
 - ⑫ GEOTECHNICAL FABRIC FOR GROUND STABILIZATION

| | | | | | | | | | | | |
|---|-----------------------|-------------------|-----------|--|---|---------------------------|----------------|--------|--------------|-----------|--|
| FILE NAME = 160095-shr-typpsections.dgn | USER NAME = #USER# | DESIGNED - L.A.P. | REVISED - | STATE OF ILLINOIS STARK COUNTY HIGHWAY DEPARTMENT | TYPICAL CROSS SECTIONS C.H. 17 / HOLMES ROAD | C.H. | SECTION | COUNTY | TOTAL SHEETS | SHEET NO. | |
| HAMPTON, LENZINI AND RENWICK, INC. 3095 STEVENSON DRIVE, SUITE 201 SPRINGFIELD, ILLINOIS 62703 ILLINOIS PROFESSIONAL DESIGN FIRM LS / PE / SE CORP. 154.000959 | PLOT SCALE = \$SCALE# | DRAWN - D.A.B. | REVISED - | | | 17 | 15-00181-00-RS | STARK | 6 | 4 | |
| PLOT DATE = 2/20/2017 | CHECKED - S.W.M. | DATE - 02/20/17 | REVISED - | | | CONTRACT NO. 89696 | | | | | |
| | | | | | | ILLINOIS FED. AID PROJECT | | | | | |



INTERSECTION DETAIL - HMA RESURFACING



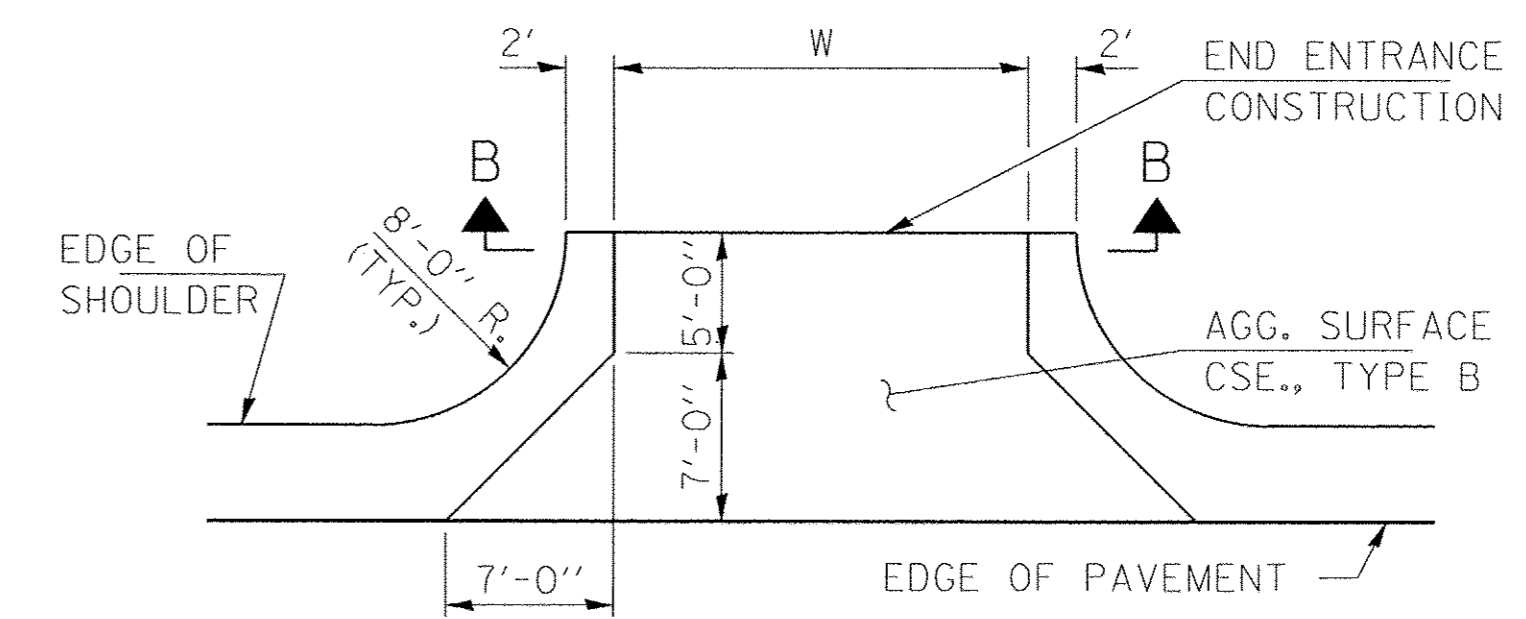
INTERSECTION DETAIL
HOLMES ROAD AT PEORIA COUNTY LINE ROAD

| | | | | | | | | | | | |
|---|----------------------|-------------------|-----------|--|---|-------------------------|--------------|---------------------------|--------------|----------------|-------------|
| FILE NAME = 160095-sht-int-detail.dgn HAMPTON, LENZINI AND RENWICK, INC. 3085 STEVENSON DRIVE, SUITE 201 SPRINGFIELD, ILLINOIS 62703 ILLINOIS PROFESSIONAL DESIGN FIRM LS / PE / SE CORP. 184.000959 | USER NAME = #USER# | DESIGNED - L.A.P. | REVISED - | STATE OF ILLINOIS STARK COUNTY HIGHWAY DEPARTMENT | INTERSECTION DETAILS C.H. 17 / HOLMES ROAD | | C.H. 17 | SECTION 15-00181-00-RS | COUNTY STARK | TOTAL SHEETS 6 | SHEET NO. 5 |
| | PLOT SCALE = #SCALE# | CHECKED - S.W.M. | REVISED - | | SCALE: | SHEET NO. 1 OF 1 SHEETS | STA. TO STA. | ILLINOIS FED. AID PROJECT | | | |
| PLOT DATE = 2/20/2017 | DATE - 02/20/17 | REVISED - | REVISED - | | | | | | | | |

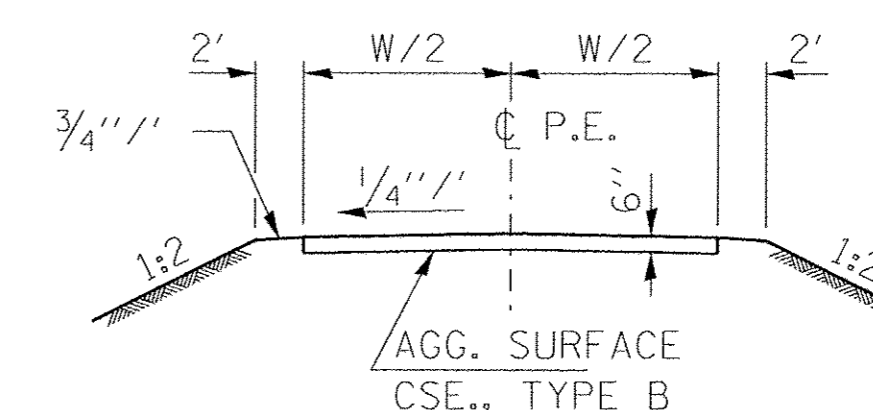
| ROADWAY SCHEDULE | | | | | | | | | |
|--------------------------|--|------------------------------|---------------------------------|-----------------------------------|--|--|-------------------|---|---|
| LOCATION | GEOTECHNICAL FABRIC FOR GROUND STABILIZATION | AGGREGATE BASE COURSE TYPE B | AGGREGATE SURFACE COURSE TYPE B | BITUMINOUS MATERIALS (PRIME COAT) | POLYMERIZED BITUMINOUS MATERIALS (TACK COAT) | HOT-MIX ASPHALT SURFACE REMOVAL BUTT JOINT | TEMPORARY RAMP | POLYMERIZED HOT-MIX ASPHALT BINDER COURSE IL 9.5, N50 | POLYMERIZED HOT-MIX ASPHALT SURFACE COURSE MIX "C", N50 |
| CH 17 / HOLMES ROAD | 21001000 SQ YD | 35101400 TON | 40200800 TON | 40600275 POUND | 40600295 POUND | 40600982 SQ YD | 40600990 SQ YD | 40603210 TON | 40603510 TON |
| STA 99+60 TO STA 148+70 | | 8068 | | 26565 | 4321 | 300 | 37 | 1653 | 1,008 |
| STA 148+70 TO STA 152+92 | 12880 | | | | 800 | | 12 | | 93 |
| STA 229+36 TO STA 232+60 | | | | | 574 | 147 | 12 | | 78 |
| ENTRANCES | | | 54 | | | | | | |
| TOTAL | 12880 | 8068 | 54 | 26565 | 5695 | 447 | 61 | 1653 | 1179 |

| PAVEMENT MARKING SCHEDULE | | | |
|-------------------------------|---------------------------|-----------------------------|--------------------------|
| LOCATION | PAINT PAVEMENT MARKING | | |
| | 4" SINGLE WHITE EDGE LINE | 4" DASHED YELLOW CENTERLINE | 24" SOLID WHITE STOP BAR |
| CH 17 / HOLMES ROAD | 78001110 FOOT | 78001110 FOOT | 78001180 FOOT |
| M.L. STA 99+60 TO STA 148+70 | 9820 | 1228 | 40 |
| M.L. STA 148+70 TO STA 152+92 | 844 | 106 | 36 |
| S.R. STA 229+36 TO STA 232+62 | 652 | 82 | |
| SUBTOTAL | 11316 | 1416 | 76 |
| TOTAL | | 12732 | 76 |

| ENTRANCES | | | | | |
|---------------------|------|----------------|-----------------|-----------------------|---------------------------------|
| LOCATION | TYPE | PROPOSED WIDTH | PROPOSED LENGTH | PROPOSED SURFACE TYPE | AGGREGATE SURFACE COURSE TYPE B |
| CH 17 / HOLMES ROAD | | FEET | FEET | | TON |
| LT. STA 126+53 | FE | 24 | 20 | AGGR | 20 |
| LT. STA 133+53 | FE | 16 | 20 | AGGR | 14 |
| RT. STA 133+53 | FE | 16 | 20 | AGGR | 14 |
| LT. STA 145+43 | PE | 24 | 20 | AGGR | 20 |
| RT. STA 145+43 | PE | 24 | 4 | AGGR | 6 |
| TOTAL | | | | | 54 |



PRIVATE & FIELD ENTRANCE DETAIL



SECTION B-B