

STATE OF ILLINOIS
DEPARTMENT OF TRANSPORTATION
DIVISION OF HIGHWAYS

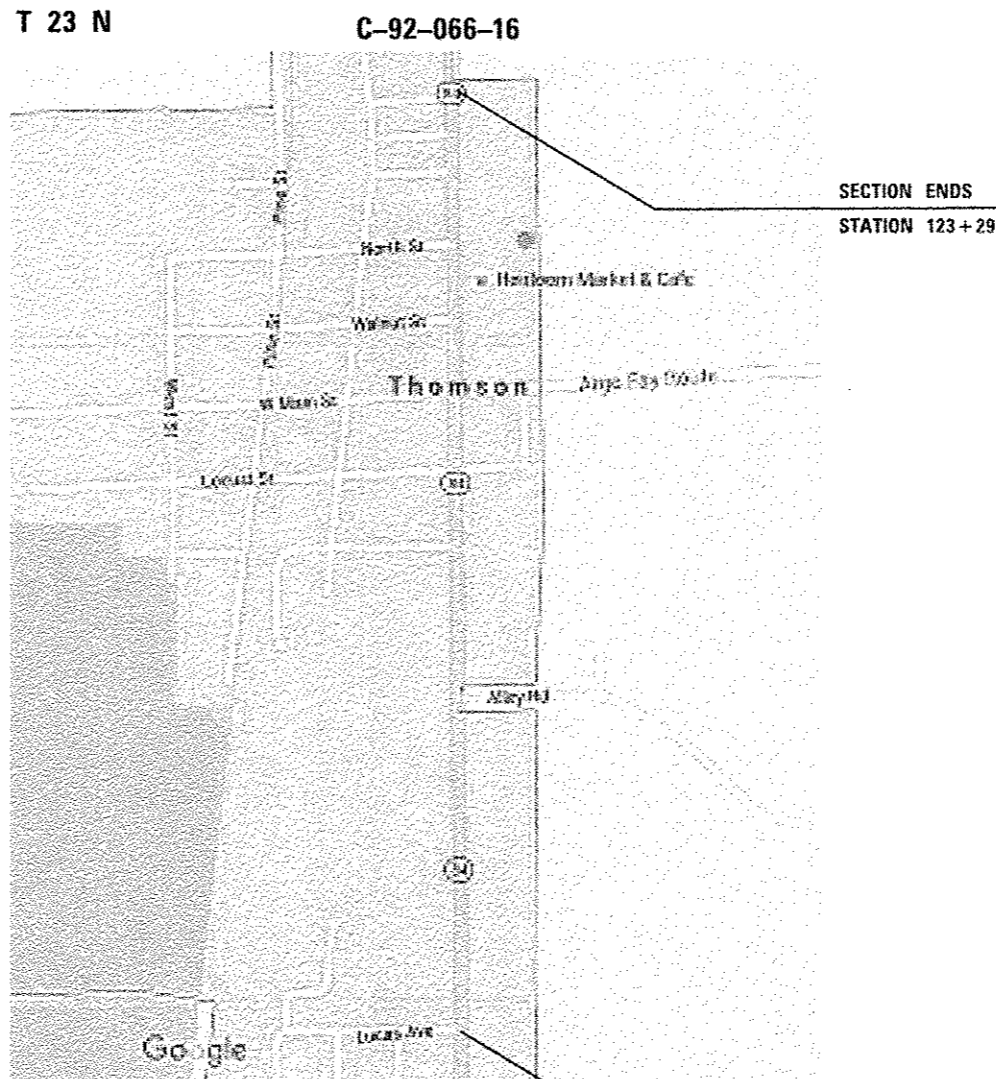
**PROPOSED
HIGHWAY PLANS**

FAP ROUTE 308 (IL 84)
SECTION D2 SW 2016-6

ADA SIDEWALK IMPROVEMENTS
CARROLL COUNTY

F.A. RTE.	SECTION	COUNTY	TOTAL SHEETS	SHEET NO.
308	D2 SW 2016-6	CARROLL	34	1
		ILLINOIS	CONTRACT NO. 64L25	

FOR INDEX OF SHEETS, SEE SHEET NO. 2



YORK TOWNSHIP: SECTION 24, 25

J.U.L.I.E.
JOINT UTILITY LOCATION INFORMATION FOR EXCAVATION
1-800-892-0123
OR 811

PROJECT ENGINEER MAT DOBIE
PROJECT MANAGER SHANE JACOBS 815-284-5995

CONTRACT NO. 64L25

STATE OF ILLINOIS
DEPARTMENT OF TRANSPORTATION

SUBMITTED JAN 24 2017
Kevin Marchok
REGIONAL ENGINEER

Mar 24 2017
Maureen M. Adis, P.E.
ENGINEER OF DESIGN AND ENVIRONMENT

Mar 24 2017
[Signature]
DIRECTOR OF PROGRAM DEVELOPMENT

PRINTED BY THE AUTHORITY
OF THE STATE OF ILLINOIS

GENERAL NOTES

The final top 4 inches of soil in any right-of-way area disturbed by the Contractor must be capable of supporting vegetation. The soil must be from the A horizon (zero to 2' deep) of soil profiles of local soils. The cost of this work shall be included in the unit prices bid and no additional compensation will be allowed.

All Borrow/Waste/Use sites must be approved by the Department prior to removing any material from the project or initiating any earthmoving activities, including temporary stockpiling outside the limits of construction.

Fertilizer shall be applied to all disturbed areas and incorporated into the seedbed prior to seeding or placement of sod at the rate specified in Sections 250 and 252 of the Standard Specifications. This work shall be included in the cost of SODDING.

Pavement Marking shall be done according to Standard 780001, except as follows:

1. All words, such as ONLY, shall be 8 feet high.
2. All non-freeway arrows shall be the large size.
3. The distance between yellow no-passing lines shall be 8 inches, not 7 inches, as shown in the detail of Typical Lane and Edge Lines.
4. Centerline Skip Dash Pavement Marking on multi-lane divided, multi-lane undivided, and one-way roadway shall be according to District Standard 41.1.

The Contractor shall be responsible for locating and protecting utility property during construction operations as outlined in Article 107.39 of the Standard Specifications. A minimum of 48 hours advance notice is required for non-emergency work. The JULIE number is 800-892-0123. The following listed utilities located within the project limits or immediately adjacent to the project construction limits are members of JULIE:

Jo-Carroll Energy (815) 273-2222 (gas)	Jo-Carroll Energy (815) 858-2207 (electric)
Mediacom (563) 559-0348	iFiber (815) 763-6075
Village of Thomson (815) 259-3905	CenturyLink (309) 477-0363

IDOT is not a member of JULIE. If you are near any overhead lighting, intersection lighting or traffic signals, contact the IDOT Traffic Office at 815/284-5469 at least 48 hours prior to work.

CADD data will be available to Contractors and Consultants working on this project. This information will be provided upon request as MicroStation CADD files and Geopak coordinate geometry files ONLY. If data is required in other formats it will be your responsibility to make these conversions. If any discrepancy or inconsistency arises between the electronic data and the information on the hard copy, the information on the hard copy should be used. Contact the District's Project Engineer to request these files.

It shall be the Contractor's responsibility to contact the municipality to determine approved methods of utility structure adjustment. Utility structures may include, but are not limited to, manholes, water valves, handholes, etc. All materials and work necessary to complete adjustments per municipality requirements shall be considered included in the cost of the associated adjustment pay item.

All required earth excavation required to build the Combination Concrete Curb and Gutter, the PCC sidewalk and removal of existing concrete steps to the lines and grades provided in the plans, shall be paid for as EARTH EXCAVATION. The Contract plans include an estimated quantity of 50 CU YD for this purpose.

Aggregate Base Course, Type B, is provided in the plan quantities and shall be used only as needed when directed by the Engineer.

The following Mixture Requirements are applicable for this project:

Mixture Uses(s):	Incidental		
PG:	64-22		
Design Air Voids	4.0 @ N50		
Mixture Composition (Gradation Mixture)	IL 9.5		
Friction Aggregate	C		
20 Year ESAL	--		
Quality Management Program to be Used	QC/QA		
Sublot Tonnage	29.00		

The sidewalk curbs in the southwest quadrant of the intersection of IL 84 and Walnut Street are not to be poured as a continuous curb, but as set forth here. Point R to Point K, expansion joint, then Point K to Point L. Point G to Point P, expansion joint, then Point P to Point O as shown on sheet #24.

Commitments:

No work, including equipment, personnel, or disturbance from either the CONTRACTOR or IDOT shall occur on the property located at the southwest quadrant of the intersection of IL 84 and Walnut Street. All work on sidewalk shall be done within existing right of way.

FILE NAME = 64L25 GN REVISED 3-2-16.DOCX	USER NAME =	DESIGNED - Engineering Systems	REVISED -	STATE OF ILLINOIS DEPARTMENT OF TRANSPORTATION	GENERAL NOTES	ROUTE	SECTION	COUNTY	TOTAL SHEETS	SHEET NO.	
	PLOT SCALE =	CHECKED -	REVISED -			FAP 308 (IL 84)	D2 SW 2016-6	Camdell	34	3	
	PLOT DATE = 5/12/2017 11:46 AM	DATE = 3/2/2016 8:52 AM	REVISED -			SCALE:	SHEET NO. OF SHEETS	STA. TO STA.	ILLINOIS FED. AID PROJECT		

SUMMARY OF QUANTITIES

RURAL

CODE NUMBER	ITEM	UNIT	TOTAL QUANTITY	0021 100% STATE
20200100	EARTH EXCAVATION	CU YD	50	50
25200100	SODDING	SO YD	957	957
25200200	SUPPLEMENTAL WATERING	UNIT	9	9
28000250	TEMPORARY EROSION CONTROL SEEDING	POUND	20	20
35101400	AGGREGATE BASE COURSE TYPE B	TON	34	34
40600990	TEMPORARY RAMPS	SO YD	27	27
28000500	INLET AND PIPE PROTECTION	EACH	2	2
40600290	BITUMINOUS MATERIALS (TACK COAT)	POUND	154	154
40800050	INCIDENTAL HOT-MIX ASPHALT SURFACING	TON	29	29
42300300	PORTLAND CEMENT CONCRETE DRIVEWAY PAVEMENT- 7"	SO YD	18	18
42400200	PORTLAND CEMENT SIDEWALK - 5"	SO FT	3,305	3,305
42400800	DETECTABLE WARNINGS	SO FT	200	200
44000155	HOT-MIX ASPHALT SURFACE REMOVAL 1 1/2"	SO YD	341	341
44000200	DRIVEWAY PAVEMENT REMOVAL	SO YD	21	21

14

• SPECIALTY ITEMS

FILE NAME *	USER NAME *	DESIGNED -	REVISED -	STATE OF ILLINOIS DEPARTMENT OF TRANSPORTATION	SUMMARY OF QUANTITIES				F.A.P. RTE.	SECTION	COUNTY	TOTAL SHEETS	SHEET NO.
Default									308	02 SW 2016-6	CARROLL	34	4
		CHECKED -	REVISED -		SCALE: 1" = 10'	SHEET	OF	SHEETS	STA.	TO	STA.	CONTRACT NO. 64L25	
		DATE -	REVISED -		ILLINOIS FED. AID PROJECT								

REV

SCHEDULE OF QUANTITIES

60605000	<u>COMBINATION CURB AND GUTTER, TYPE B-6.24</u>	
	<u>FOOT</u>	<u>LOCATION</u>
	31	SW Quadrant at intersection of Whitney street and IL 84
	20	NW Quadrant at intersection of Middle street and IL 84
	20	SW Quadrant at intersection of Middle street and IL 84
	19	NW Quadrant at intersection of North street and IL 84
	20	SW Quadrant at intersection of North street and IL 84
	45	NW Quadrant at intersection of Walnut street and IL 84
	37	SW Quadrant at intersection of Walnut street and IL 84
	41	NW Quadrant at intersection of Main street and IL 84
	34	SW Quadrant at intersection of Main street and IL 84
	37	SE Quadrant at intersection of Argo Fey Road and IL 84
	77	NW Quadrant at intersection of South street and IL 84
	64	SW Quadrant at intersection of South street and IL 84
	<u>119</u>	Sta. 102+34 to Sta. 103+54 RT across from South St on IL 84
TOTAL	564.0	

66900200	<u>NON-SPECIAL WASTE DISPOSAL</u>	
	<u>CU YD</u>	<u>LOCATION</u>
	20	See Special Provisions and Locations below 122+5 to 122+81 (IL 84)0 to 20' Left 109+11 to 109+44 (IL 84)0 to 20' Left 102+4 to 102+84 (IL 84)0 to 20' Left
TOTAL	20.0	

66900450	<u>SPECIAL WASTE PLANS AND REPORTS</u>	
	<u>LUMP SUM</u>	See Special Provisions
TOTAL	<u>1</u>	1.0

66900530	<u>SOIL DISPOSAL ANALYSIS</u>	
	<u>EACH</u>	See Special Provisions
TOTAL	<u>1</u>	1.0

78000400	<u>THERMOPLASTIC PAVEMENT MARKING- LINE 6*</u>	
	<u>FOOT</u>	<u>LOCATION</u>
	218	Main Street cross walk
	<u>152</u>	South Street cross walk
TOTAL	370	

78000600	<u>THERMOPLASTIC PAVEMENT MARKING- LINE 12*</u>	
	<u>FOOT</u>	<u>LOCATION</u>
	84	South Street cross walk hatch
	<u>216</u>	Main Street cross walk hatch
TOTAL	300	

78000650	<u>THERMOPLASTIC PAVEMENT MARKING- LINE 24*</u>	
	<u>FOOT</u>	<u>LOCATION</u>
	21	Main Street STOP BAR
	<u>14</u>	South Street STOP BAR
TOTAL	35	

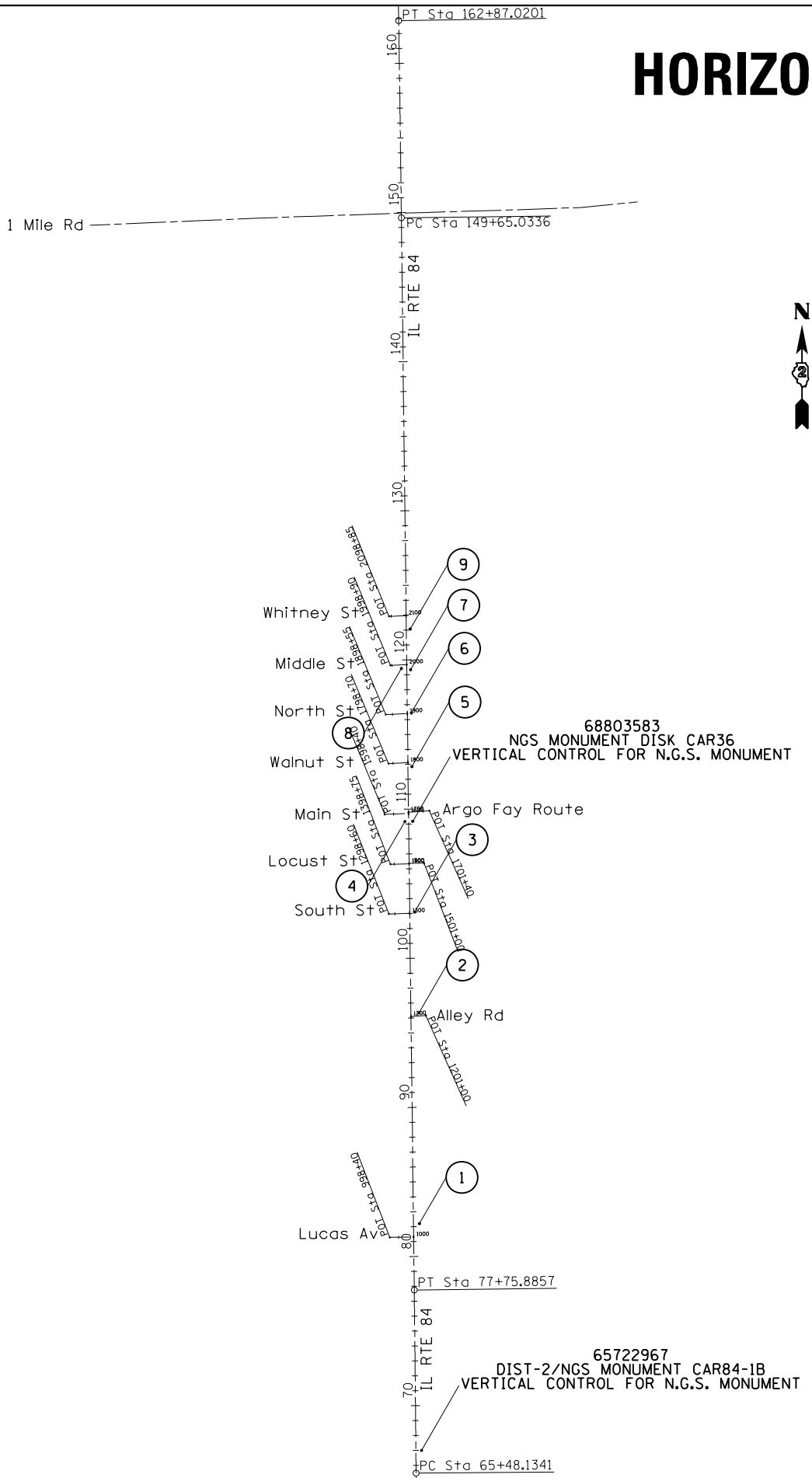
Z0012450	<u>CONCRETE STEPS</u>	
	<u>CU YD</u>	<u>LOCATION</u>
TOTAL	1	Steps RT STA 102+67

Z0025505	<u>PROPERTY MARKERS</u>	
	<u>EACH</u>	<u>LOCATION</u>
TOTAL	12	AS DIRECTED BY THE ENGINEER

INCIDENTAL HOT-MIX ASPHALT SCHEDULE

Location	Remarks	Length (FT)	Proposed Surface		*40600290*	44000155	40800050	40600990
			PAVEMENT		Bit. Material (Tack Coat)	Hot Mix Asphalt Surface Removal 1 1/2"	INCIDENTAL HOT-MIX ASHALT SURFACING 1 1/2"	Temporary Ramps
			Width (FT)	SQ FT	POUND	SQ YD	TON	SQ YD
IL 84 CARROLL COUNTY								
WHITNEY ST SOUTHWEST	1 1/2"	31.0	4	124.0	6.2	13.8	1.2	1.5
MIDDLE ST NORTHWEST	1 1/2"	20.0	4	80.0	4.0	8.9	0.7	1.5
MIDDLE ST SOUTHWEST	1 1/2"	20.0	4	80.0	4.0	8.9	0.7	1.5
NORTH ST NORTHWEST	1 1/2"	19.0	4	76.0	3.8	8.4	0.7	1.5
NORTH ST SOUTHWEST	1 1/2"	20.0	4	80.0	4.0	8.9	0.7	1.5
WALNUT ST NORTHWEST	1 1/2"	45.0	4	180.0	9.0	20.0	1.7	1.5
WALNUT ST SOUTHWEST	1 1/2"	37.0	4	148.0	7.4	16.4	1.4	1.5
MAIN ST NORTHWEST	1 1/2"	41.0	4	164.0	8.2	18.2	1.5	1.5
MAIN ST SOUTHWEST	1 1/2"	34.0	4	136.0	6.8	15.1	1.3	3.0
ARGO FAY RD SOUTHEAST	1 1/2"	37.0	4	148.0	7.4	16.4	1.4	1.5
SOUTH ST NORTHWEST	1 1/2" ENTIRE	VAR.	VAR.	0.0	0.0	0.0	0.0	0.0
SOUTH ST SOUTHWEST	1 1/2" INTERSE	VAR.	VAR.	1,376.0	68.8	152.9	12.8	6.8
SOUTH ST EAST	1 1/2"	119.0	4	476.0	23.8	52.9	4.4	3.8
SUBTOTAL					153.4	340.9	28.6	27.0

HORIZONTAL & VERTICAL CONTROL



Chain IL84 contains:
1148 CUR 210 CUR 220 1151

Beginning chain IL84 description
=====

Point 1148 N 1,921,486.8408 E 2,314,952.6175 Sta 49+29.0616
Course from 1148 to PC 210 359° 33' 46.5817" Dist 1,619.0725'

Curve Data

Curve 210
P.I. Station 71+62.0109 N 1,923,719.7251 E 2,314,935.5844
Delta = 0° 15' 03.0368" (LT)
Degree = 0° 01' 13.5521"
Tangent = 613.8768'
Length = 1,227.7516'
Radius = 280,433.7065'
External = 0.6719'
Long Chord = 1,227.7507'
Mid. Ord. = 0.6719'
P.C. Station 65+48.1341 N 1,923,105.8662 E 2,314,940.2671
P.T. Station 77+75.8857 N 1,924,333.5577 E 2,314,928.2143
C.C. N 1,920,966.6974 E 2,034,514.7196

Course from PT 210 to PC 220 359° 18' 43.5450" Dist 7,189.1479'

Curve Data

Curve 220
P.I. Station 156+26.0276 N 1,932,183.1338 E 2,314,833.9662
Delta = 0° 12' 39.5097" (LT)
Degree = 0° 00' 57.4522"
Tangent = 660.9940'
Length = 1,321.9865'
Radius = 359,020.1670'
External = 0.6085'
Long Chord = 1,321.9858'
Mid. Ord. = 0.6085'
P.C. Station 149+65.0336 N 1,931,522.1874 E 2,314,841.9020
P.T. Station 162+87.0201 N 1,932,844.0465 E 2,314,823.5967
C.C. N 1,927,211.8256 E 1,955,847.6109

Course from PT 220 to 1151 359° 06' 04.0353" Dist 11,854.4734'

Point 1151 N 1,944,697.0610 E 2,314,637.6266 Sta 281+41.4935

=====
Ending chain IL84 description

CURVE POINT NUMBERS					
CHAIN	CURVE	PI	CC	PC	PT
IL84	210	210	211	212	213
IL84	220	220	221	222	223

HORIZONTAL & VERTICAL CONTROL

Chain ALLEYRD contains:
1155 1156

Beginning chain ALLEYRD description
=====

Point 1155 N 1,926,166.9545 E 2,314,906.2011 Sta 1200+00.0000

Course from 1155 to 1156 85° 58' 53.9220" Dist 100.0000'

Point 1156 N 1,926,173.9621 E 2,315,005.9552 Sta 1201+00.0000

=====

Ending chain ALLEYRD description

Chain LUCASAV contains:
1152 1154

Beginning chain LUCASAV description
=====

Point 1152 N 1,924,686.0567 E 2,314,763.9727 Sta 998+40.0000

Course from 1152 to 1154 89° 00' 03.4943" Dist 160.0000'

Point 1154 N 1,924,688.8464 E 2,314,923.9484 Sta 1000+00.0000

=====

Ending chain LUCASAV description

Chain ARGOFAYRT contains:
1165 1166

Beginning chain ARGOFAYRT description
=====

Point 1165 N 1,927,536.7855 E 2,314,889.7538 Sta 1700+00.0000

Course from 1165 to 1166 86° 03' 18.8297" Dist 140.0000'

Point 1166 N 1,927,546.4168 E 2,315,029.4222 Sta 1701+40.0000

=====

Ending chain ARGOFAYRT description

Chain MAINST contains:
1163 1164

Beginning chain MAINST description
=====

Point 1163 N 1,927,522.1680 E 2,314,729.9984 Sta 1598+40.0000

Course from 1163 to 1164 87° 29' 36.7427" Dist 160.0000'

Point 1164 N 1,927,529.1651 E 2,314,889.8453 Sta 1600+00.0000

=====

Ending chain MAINST description

Chain SOUTHST contains:
1157 1158

Beginning chain SOUTHST description
=====

Point 1157 N 1,926,854.5109 E 2,314,757.9503 Sta 1298+60.0000

Course from 1157 to 1158 88° 29' 01.7676" Dist 140.0000'

Point 1158 N 1,926,858.2151 E 2,314,897.9013 Sta 1300+00.0000

=====

Ending chain SOUTHST description

Chain LOCUSTST_E contains:
1161 1162

Beginning chain LOCUSTST_E description
=====

Point 1161 N 1,927,194.0225 E 2,314,893.8693 Sta 1500+00.0000

Course from 1161 to 1162 89° 00' 16.5490" Dist 100.0000'

Point 1162 N 1,927,195.7597 E 2,314,993.8542 Sta 1501+00.0000

=====

Ending chain LOCUSTST_E description

Chain MIDDLEST contains:
1171 1172

Beginning chain MIDDLEST description
=====

Point 1171 N 1,928,521.0794 E 2,314,767.9724 Sta 1998+90.0000

Course from 1171 to 1172 87° 40' 44.6358" Dist 110.0000'

Point 1172 N 1,928,525.5341 E 2,314,877.8822 Sta 2000+00.0000

=====

Ending chain MIDDLEST description

Chain WALNUTST contains:
1167 1168

Beginning chain WALNUTST description
=====

Point 1167 N 1,927,862.4059 E 2,314,755.9156 Sta 1798+70.0000

Course from 1167 to 1168 87° 17' 31.2248" Dist 130.0000'

Point 1168 N 1,927,868.5479 E 2,314,885.7704 Sta 1800+00.0000

=====

Ending chain WALNUTST description

Chain LOCUSTST_W contains:
1159 1160

Beginning chain LOCUSTST_W description
=====

Point 1159 N 1,927,188.0429 E 2,314,768.9384 Sta 1398+75.0000

Course from 1159 to 1160 88° 44' 13.3767" Dist 125.0000'

Point 1160 N 1,927,190.7981 E 2,314,893.9080 Sta 1400+00.0000

=====

Ending chain LOCUSTST_W description

Chain NORTHST contains:
1169 1170

Beginning chain NORTHST description
=====

Point 1169 N 1,928,191.3591 E 2,314,736.9458 Sta 1898+55.0000

Course from 1169 to 1170 87° 38' 24.9768" Dist 145.0000'

Point 1170 N 1,928,197.3292 E 2,314,881.8228 Sta 1900+00.0000

=====

Ending chain NORTHST description

Chain WHITNEYST contains:
1173 1174

Beginning chain WHITNEYST description
=====

Point 1173 N 1,928,850.0244 E 2,314,759.0177 Sta 2098+85.0000

Course from 1173 to 1174 87° 48' 12.3858" Dist 115.0000'

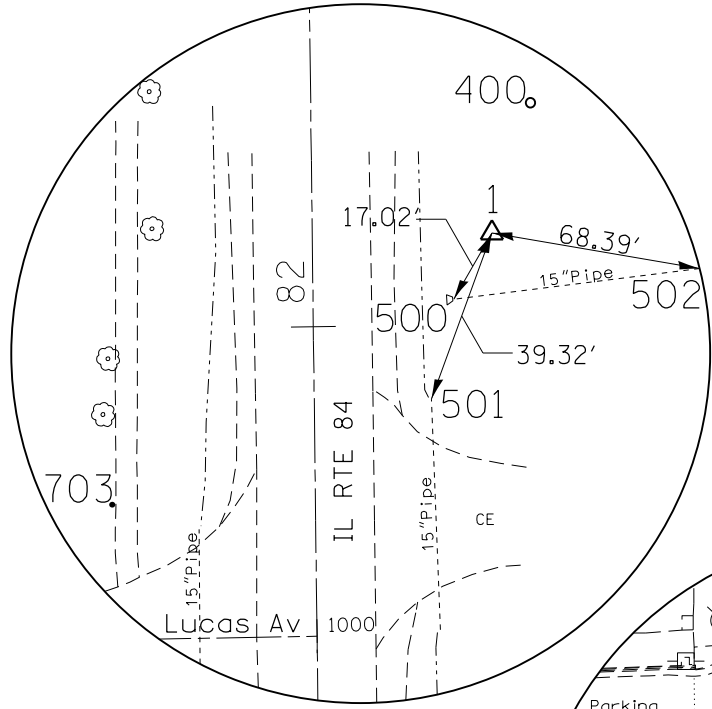
Point 1174 N 1,928,854.4321 E 2,314,873.9332 Sta 2100+00.0000

=====

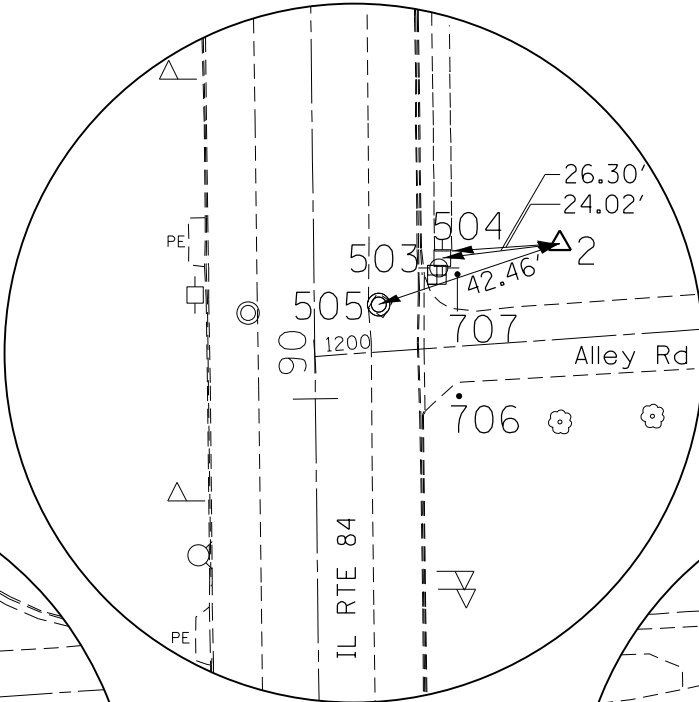
Ending chain WHITNEYST description

FILE NAME =	USER NAME = renkesrw	DESIGNED -	REVISED -	STATE OF ILLINOIS DEPARTMENT OF TRANSPORTATION	IL RTE 84 HORIZONTAL & VERTICAL CONTROL			F.A.P. RTE.	SECTION	COUNTY	TOTAL SHEETS	SHEET NO.				
p:\IL\084EBIDINTEG.illinois.gov\PI\DOT\Documents\DOT Offices\District 2\Projects\2020\DRAWING\DATA\ADSheets\2024216HVC-sht.dgn								DRAWING	308	D2 SW 2016-6	CARROLL	34	12			
PLOT SCALE = 1000.0000' / in.								CHECKED -	REVISED -	CONTRACT NO. 64L25						
Default								DATE -	REVISED -	SCALE: 1" = 100'			SHEET	OF	SHEETS	STA.

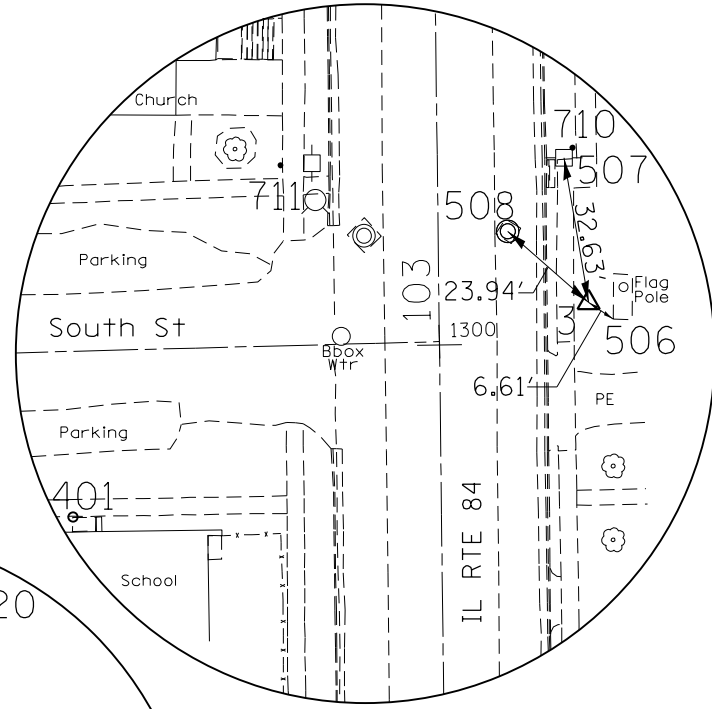
HORIZONTAL & VERTICAL CONTROL



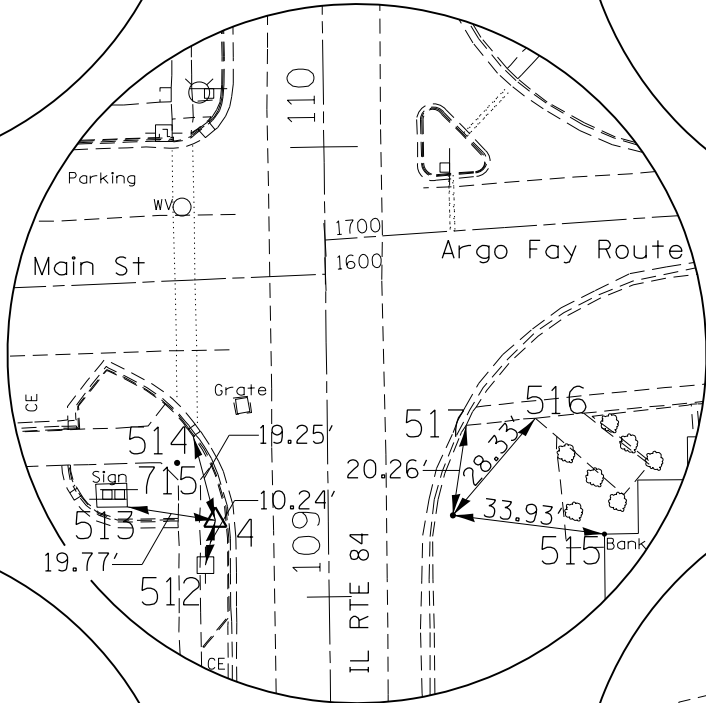
HORIZONTAL CONTROL
POINT No. 1



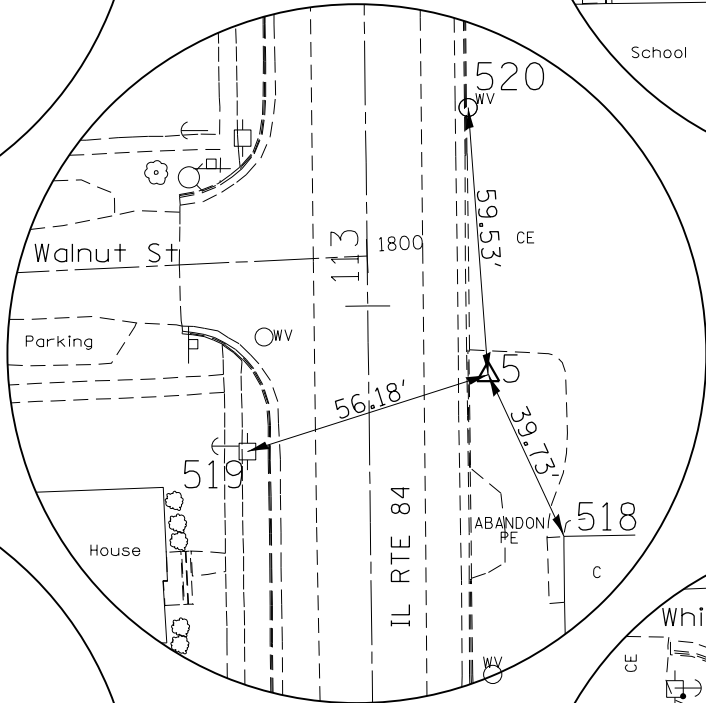
HORIZONTAL CONTROL
POINT No. 2



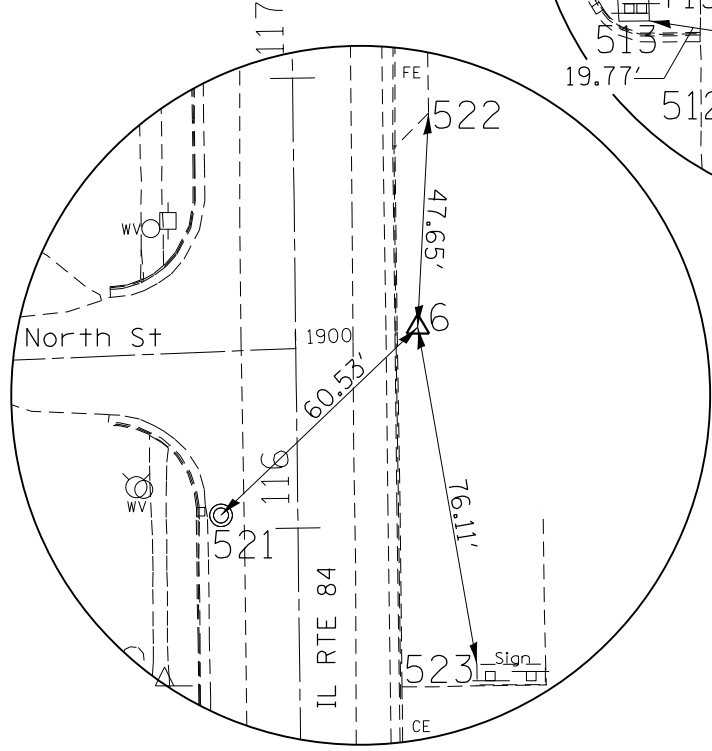
HORIZONTAL CONTROL
POINT No. 3



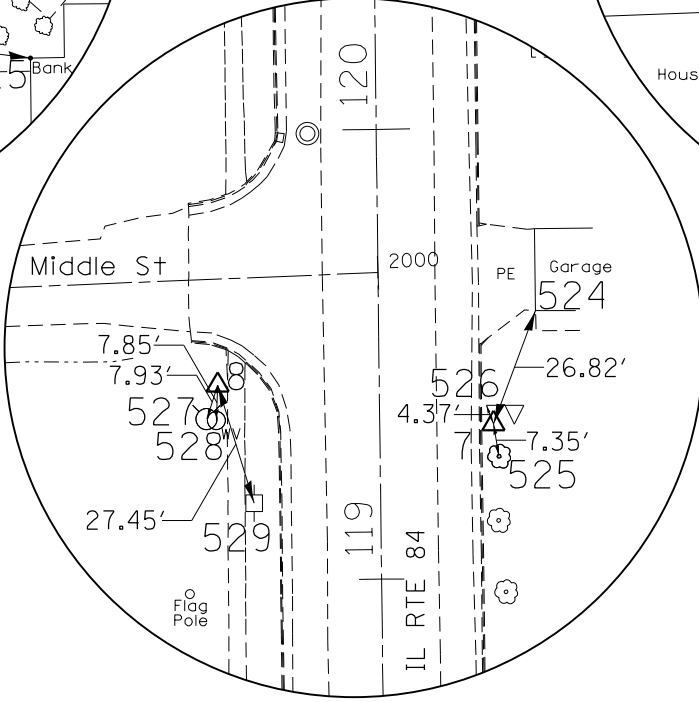
HORIZONTAL CONTROL
POINT No. 4
N.G.S. MONUMENT
68803583



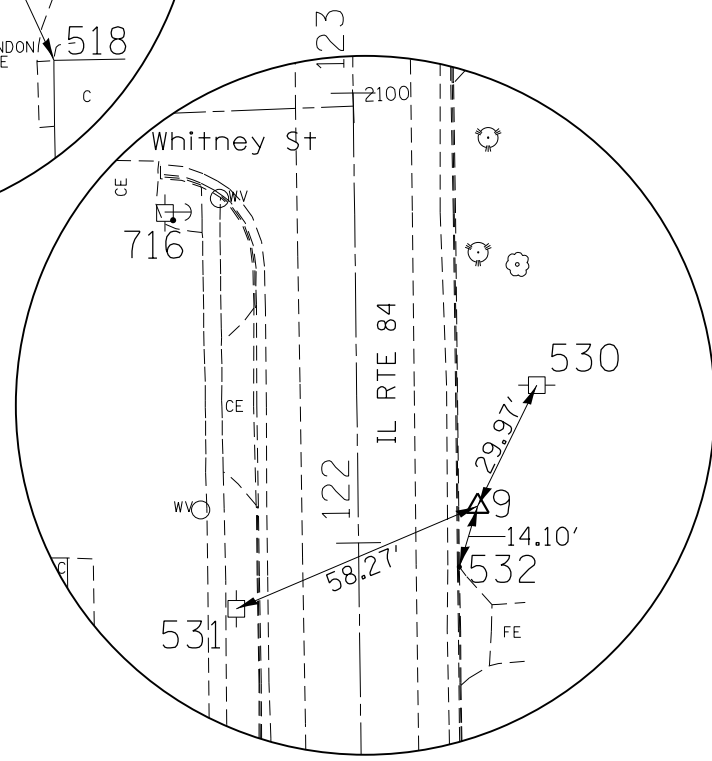
HORIZONTAL CONTROL
POINT No. 5



HORIZONTAL CONTROL
POINT No. 6



HORIZONTAL CONTROL
POINT No. 7
HORIZONTAL CONTROL
POINT No. 8



HORIZONTAL CONTROL
POINT No. 9

FILE NAME =	USER NAME = renkesrw	DESIGNED -	REVISED -	STATE OF ILLINOIS DEPARTMENT OF TRANSPORTATION	IL RTE 84 HORIZONTAL & VERTICAL CONTROL				F.A.P. RTE.	SECTION	COUNTY	TOTAL SHEETS	SHEET NO.			
Default	pw:\IL\084EBIDINTEG.illinois.gov\PIWIDOT\Documents\DOT Offices\District 2\Projects\0202\DRAWING\DATA\CADsheets\0204216HVC-sht.dgn	CHECKED -	REVISED -		SCALE: 1" = 100'	SHEET	OF	SHEETS	STA.	TO	STA.	308	D2 SW 2016-6	CARROLL	34	13
		DATE -	REVISED -													
	PLOT DATE: Jan-06-2017 11:53:09 AM															

ILLINOIS FED. AID PROJECT
CONTRACT NO. 64L25



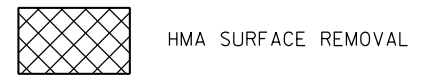
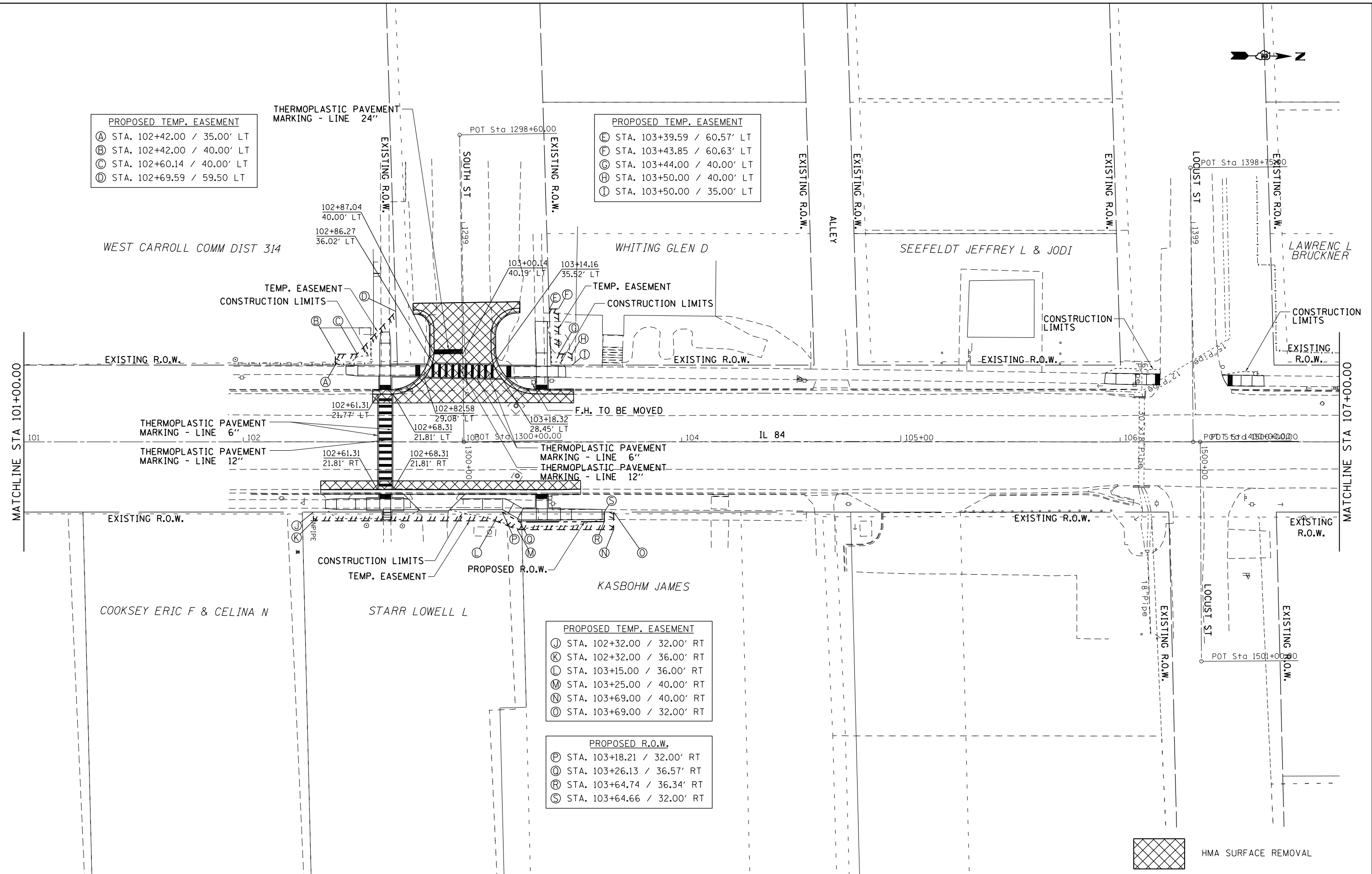
- PROPOSED TEMP. EASEMENT**
- Ⓐ STA. 102+42.00 / 35.00' LT
 - Ⓑ STA. 102+42.00 / 40.00' LT
 - Ⓒ STA. 102+60.14 / 40.00' LT
 - Ⓓ STA. 102+69.59 / 59.50' LT

THERMOPLASTIC PAVEMENT MARKING - LINE 24"

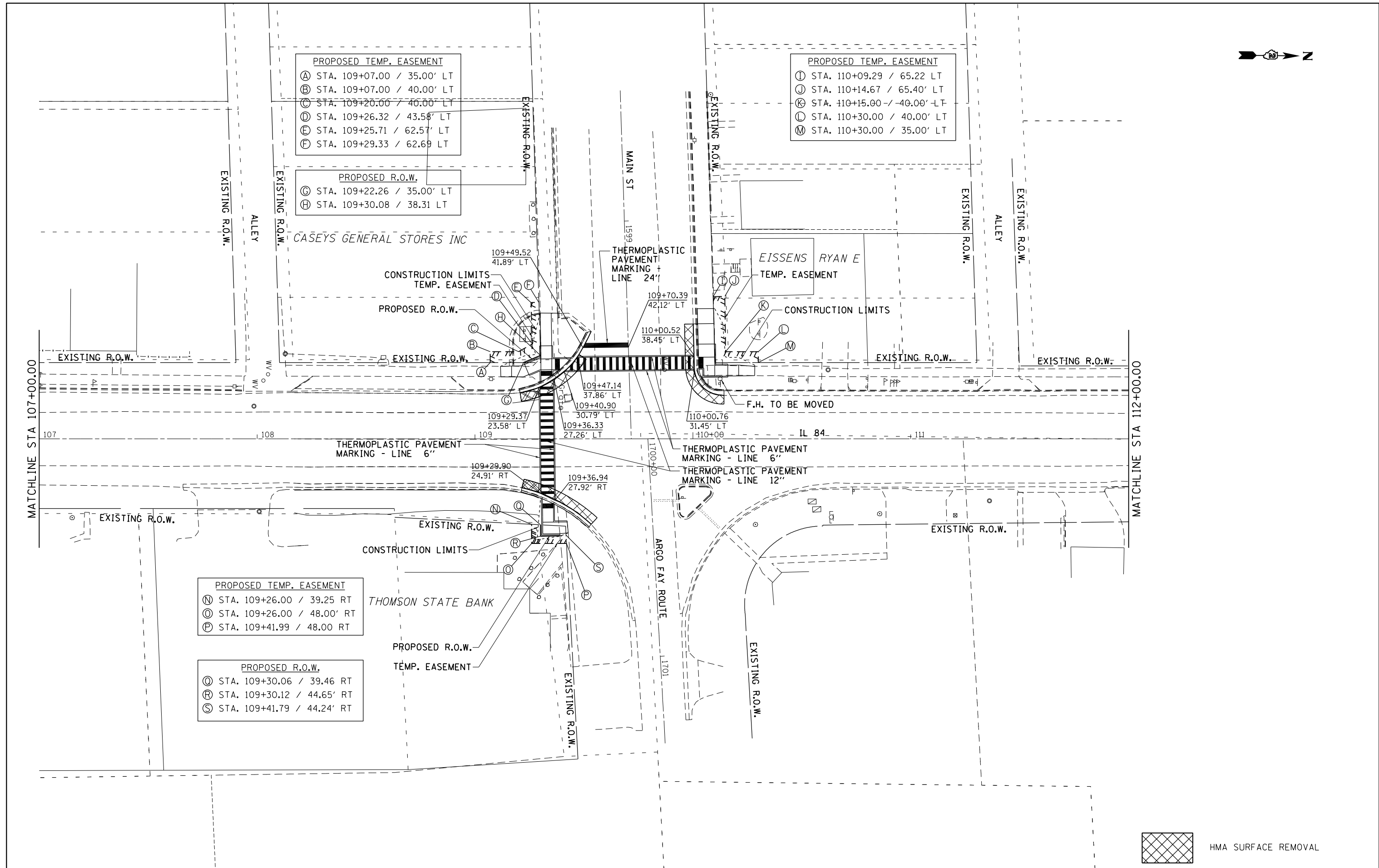
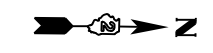
- PROPOSED TEMP. EASEMENT**
- Ⓔ STA. 103+39.59 / 60.57' LT
 - Ⓕ STA. 103+43.85 / 60.63' LT
 - Ⓖ STA. 103+44.00 / 40.00' LT
 - Ⓗ STA. 103+50.00 / 40.00' LT
 - Ⓚ STA. 103+50.00 / 35.00' LT

- PROPOSED TEMP. EASEMENT**
- Ⓜ STA. 102+32.00 / 32.00' RT
 - Ⓨ STA. 102+32.00 / 36.00' RT
 - Ⓛ STA. 103+15.00 / 36.00' RT
 - Ⓜ STA. 103+25.00 / 40.00' RT
 - Ⓝ STA. 103+69.00 / 40.00' RT
 - Ⓞ STA. 103+69.00 / 32.00' RT

- PROPOSED R.O.W.**
- Ⓟ STA. 103+18.21 / 32.00' RT
 - Ⓠ STA. 103+26.13 / 36.57' RT
 - Ⓡ STA. 103+64.74 / 36.34' RT
 - Ⓢ STA. 103+64.66 / 32.00' RT



FILE NAME =	USER NAME = renkesrw	DESIGNED -	REVISED -	STATE OF ILLINOIS DEPARTMENT OF TRANSPORTATION	IL 84 PLAN SHEETS				F.A.P. R.T.E.	SECTION	COUNTY	TOTAL SHEETS	SHEET NO.
pw:\IL\084EBID\INTEG.illinois.gov\PI\DOT\Documents\DOT Offices\District 2\Projects\0202\Drawings\CAD\Sheets\0204216-sht-pln\p	PLLOT SCALE = 40.0000' / in.	CHECKED -	REVISED -		308	D2 SW 2016-6	CARROLL	34	16				
Default	PLLOT DATE = Jan-06-2017 11:55:48 AM	DATE -	REVISED -		CONTRACT NO. 64L25				ILLINOIS FED. AID PROJECT				
					SCALE:	SHEET	OF	SHEETS	STA.	TO	STA.		



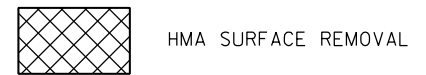
- PROPOSED TEMP. EASEMENT**
- Ⓐ STA. 109+07.00 / 35.00' LT
 - Ⓑ STA. 109+07.00 / 40.00' LT
 - Ⓒ STA. 109+20.00 / 40.00' LT
 - Ⓓ STA. 109+26.32 / 43.58' LT
 - Ⓔ STA. 109+25.71 / 62.57' LT
 - Ⓕ STA. 109+29.33 / 62.69' LT

- PROPOSED R.O.W.**
- Ⓖ STA. 109+22.26 / 35.00' LT
 - Ⓖ STA. 109+30.08 / 38.31' LT

- PROPOSED TEMP. EASEMENT**
- Ⓛ STA. 110+09.29 / 65.22' LT
 - Ⓜ STA. 110+14.67 / 65.40' LT
 - Ⓨ STA. 110+15.00 / -40.00' LT
 - Ⓩ STA. 110+30.00 / 40.00' LT
 - ⓓ STA. 110+30.00 / 35.00' LT

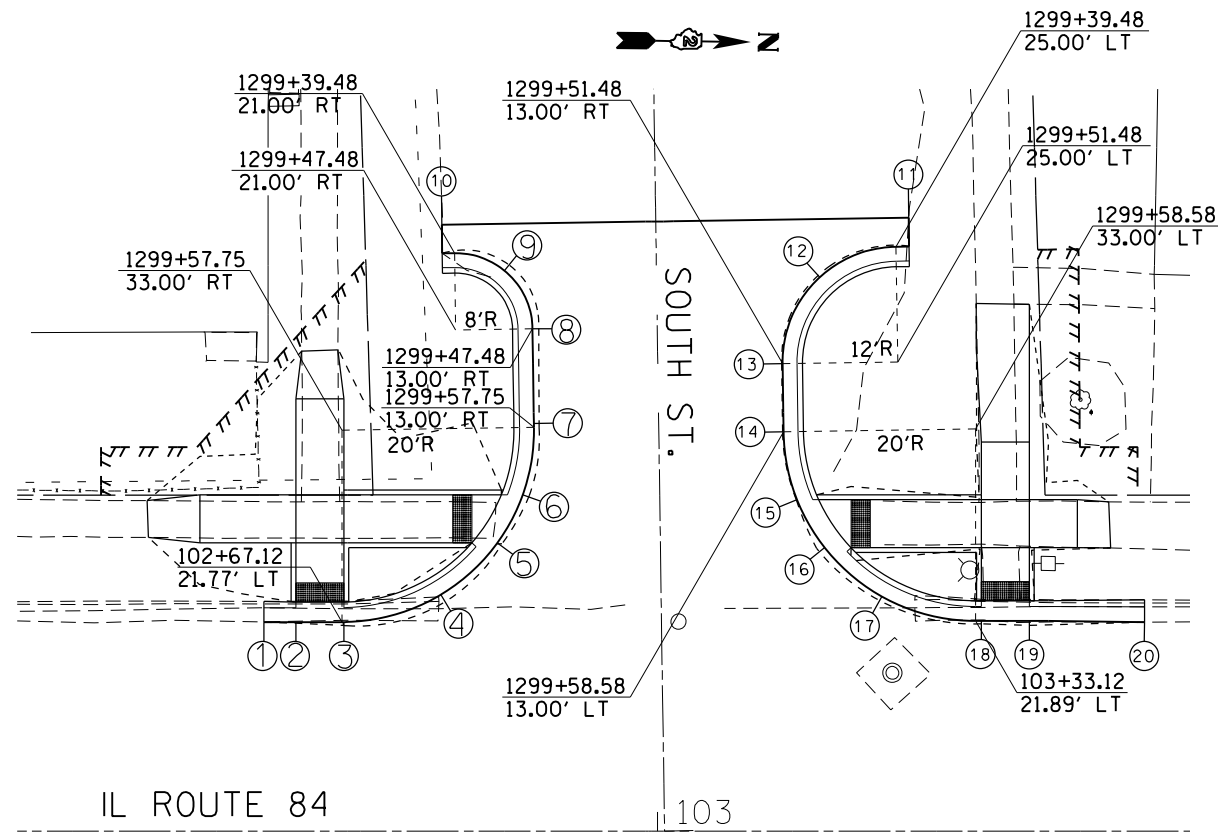
- PROPOSED TEMP. EASEMENT**
- Ⓝ STA. 109+26.00 / 39.25' RT
 - Ⓞ STA. 109+26.00 / 48.00' RT
 - Ⓟ STA. 109+41.99 / 48.00' RT

- PROPOSED R.O.W.**
- Ⓠ STA. 109+30.06 / 39.46' RT
 - Ⓡ STA. 109+30.12 / 44.65' RT
 - Ⓢ STA. 109+41.79 / 44.24' RT



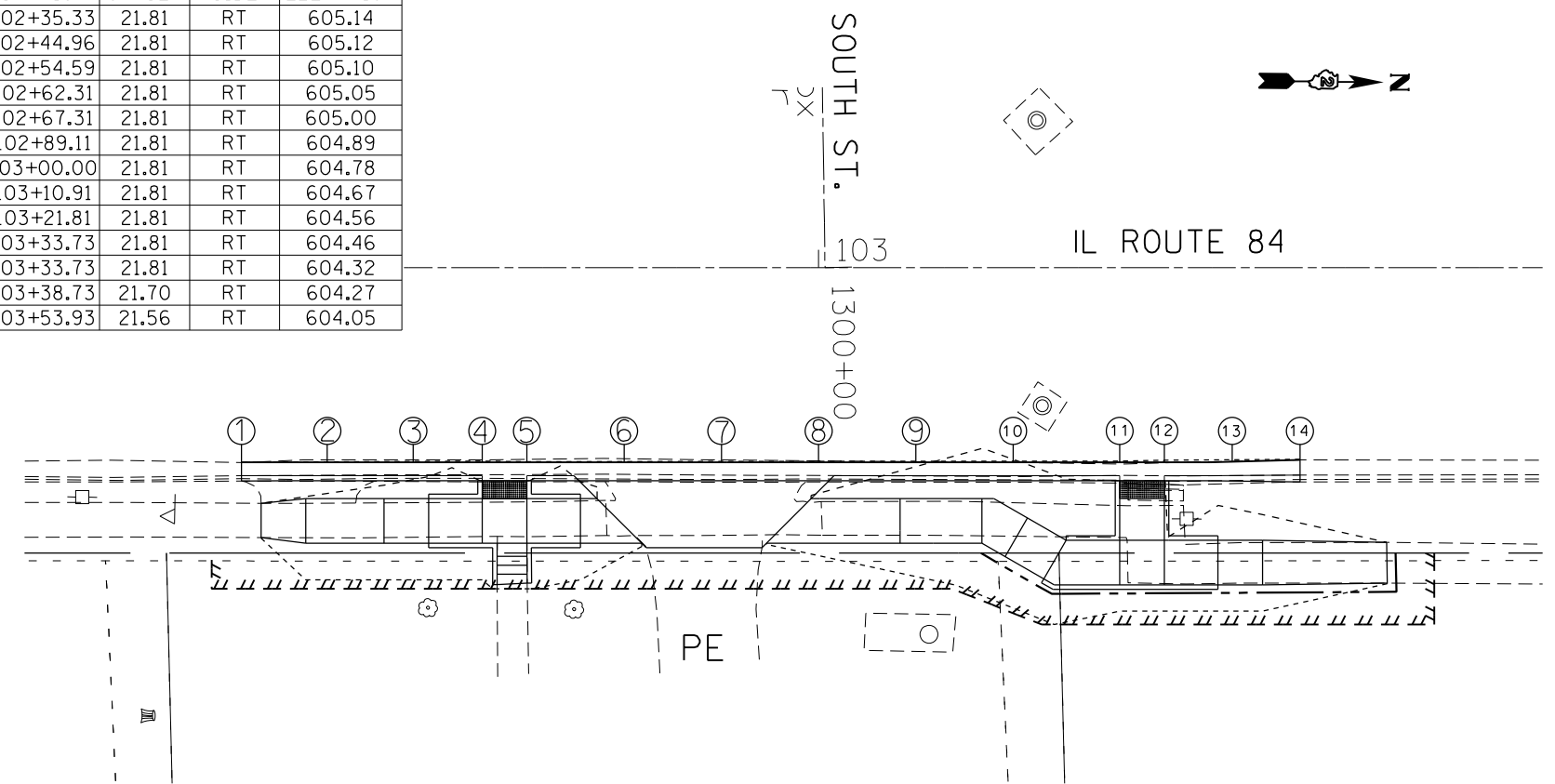
FILE NAME =	USER NAME = renkesrw	DESIGNED -	REVISED -	STATE OF ILLINOIS DEPARTMENT OF TRANSPORTATION	IL 84 PLAN SHEETS			F.A.P. RTE.	SECTION	COUNTY	TOTAL SHEETS	SHEET NO.
Default		CHECKED -	REVISED -					308	D2 SW 2016-6	CARROLL	34	17
		DATE -	REVISED -		CONTRACT NO. 64L25			ILLINOIS FED. AID PROJECT				
					SCALE:	SHEET	OF	SHEETS	STA.	TO	STA.	

POINT	STATION	OFFSET	SIDE	ELEVATION
1	102+59.00	21.77	LT	605.12
2	102+62.31	21.77	LT	605.15
3	102+67.31	21.77	LT	605.20
4	102+77.43	24.63	L+	605.34
5	102+83.30	30.02	LT	605.47
6	102+85.94	35.02	LT	605.49
7	102+87.11	42.49	LT	605.50
8	102+86.97	52.32	LT	605.50
9	102+84.04	58.39	LT	605.51
10	102+77.52	60.19	LT	605.52



POINT	STATION	OFFSET	SIDE	ELEVATION
11	103+26.22	60.89	LT	605.10
12	103+16.90	57.71	LT	605.04
13	103+13.02	48.70	LT	604.98
14	103+13.13	41.60	LT	604.94
15	103+14.53	34.52	LT	604.90
16	103+17.41	29.52	LT	604.87
17	103+23.38	24.43	LT	604.67
18	103+33.73	21.90	LT	604.46
19	103+38.73	21.90	LT	604.41
20	103+50.61	21.75	LT	604.14

POINT	STATION	OFFSET	SIDE	ELEVATION
1	102+35.33	21.81	RT	605.14
2	102+44.96	21.81	RT	605.12
3	102+54.59	21.81	RT	605.10
5	102+62.31	21.81	RT	605.05
6	102+67.31	21.81	RT	605.00
7	102+89.11	21.81	RT	604.89
8	103+00.00	21.81	RT	604.78
9	103+10.91	21.81	RT	604.67
10	103+21.81	21.81	RT	604.56
11	103+33.73	21.81	RT	604.46
12	103+33.73	21.81	RT	604.32
13	103+38.73	21.70	RT	604.27
14	103+53.93	21.56	RT	604.05



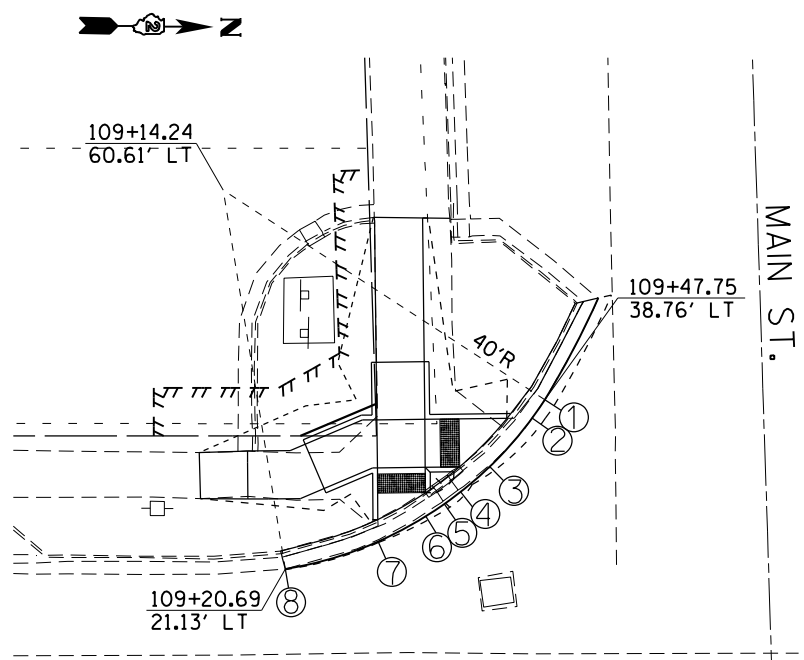
FILE NAME =	USER NAME = renkesrw	DESIGNED -	REVISED -
pw:\IL\084EBIDINTEG.illinois.gov\PWIDOT\Documents\DOT Offices\District 2\Projects\0202\Drawings\AD\Sheets\0204216-sht-elev.dwg		REVISIONS	REVISED -
Default	PLOT SCALE = 20.0000' / in.	CHECKED -	REVISED -
	PLOT DATE = Jan-09-2017 08:37:17 AM	DATE -	REVISED -

STATE OF ILLINOIS
DEPARTMENT OF TRANSPORTATION

LUCAS AVE AND SOUTH ST WITH IL ROUTE 84
PAVEMENT ELEVATIONS

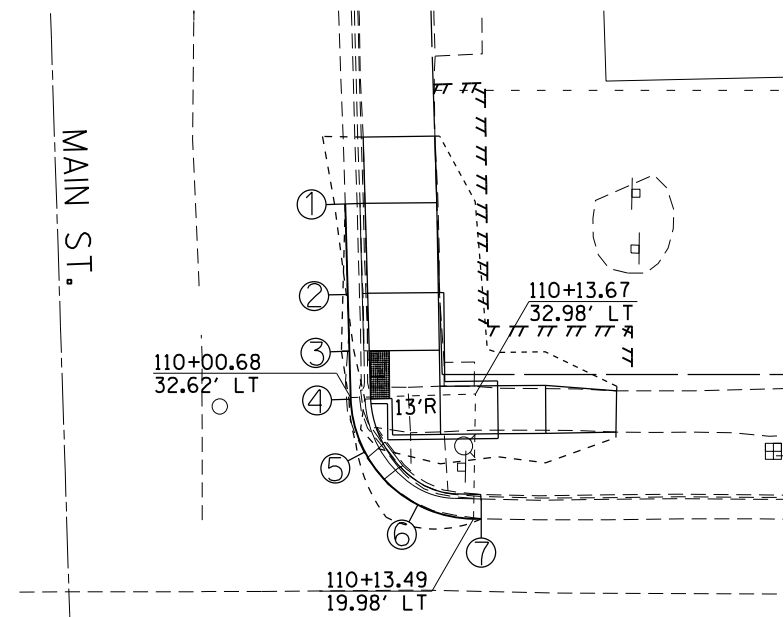
SCALE: 1" = 10' SHEET OF SHEETS STA. TO STA.

F.A.P. RTE.	SECTION	COUNTY	TOTAL SHEETS	SHEET NO.
308	D2 SW 2016-6	CARROLL	34	20
CONTRACT NO. 64L25			ILLINOIS FED. AID PROJECT	



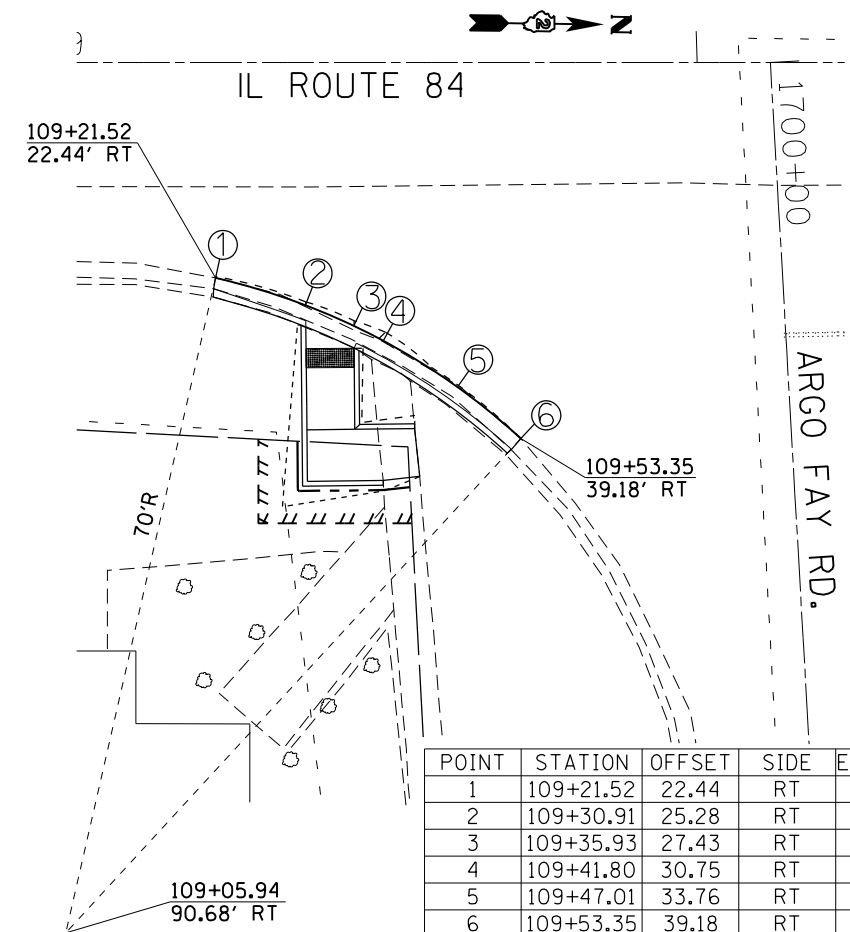
IL ROUTE 84
109

POINT	STATION	OFFSET	SIDE	ELEVATION
1	109+47.75	38.70	LT	600.87
2	109+46.41	36.85	LT	600.57
3	109+41.99	31.80	LT	600.52
4	109+38.60	28.96	LT	600.46
5	109+37.05	28.75	LT	600.44
6	109+35.31	26.62	LT	600.45
7	109+30.37	24.00	LT	600.48
8	109+20.69	21.13	LT	600.53



IL ROUTE 84
110

POINT	STATION	OFFSET	SIDE	ELEVATION
1	110+00.13	52.79	LT	601.22
2	110+00.41	43.59	LT	600.90
3	110+00.55	37.45	LT	600.84
4	110+00.68	32.45	LT	600.79
5	110+01.73	27.24	LT	600.75
6	110+06.86	21.80	LT	601.02
7	110+14.31	19.97	LT	601.12



POINT	STATION	OFFSET	SIDE	ELEVATION
1	109+21.52	22.44	RT	600.27
2	109+30.91	25.28	RT	600.23
3	109+35.93	27.43	RT	600.18
4	109+41.80	30.75	RT	600.08
5	109+47.01	33.76	RT	599.91
6	109+53.35	39.18	RT	599.77

FILE NAME =	USER NAME = renkesrw	DESIGNED -	REVISED -
pw:\IL\084EBIDINTEG.illinois.gov\PIWIDOT\Documents\DOT Offices\District 2\Projects\2016\2016-6\2016-6-216-shr-elev.dwg		DRAWN -	REVISED -
Default	PLOT SCALE = 20.0000' / in.	CHECKED -	REVISED -
	PLOT DATE = Jan-09-2017 08:37:45 AM	DATE -	REVISED -

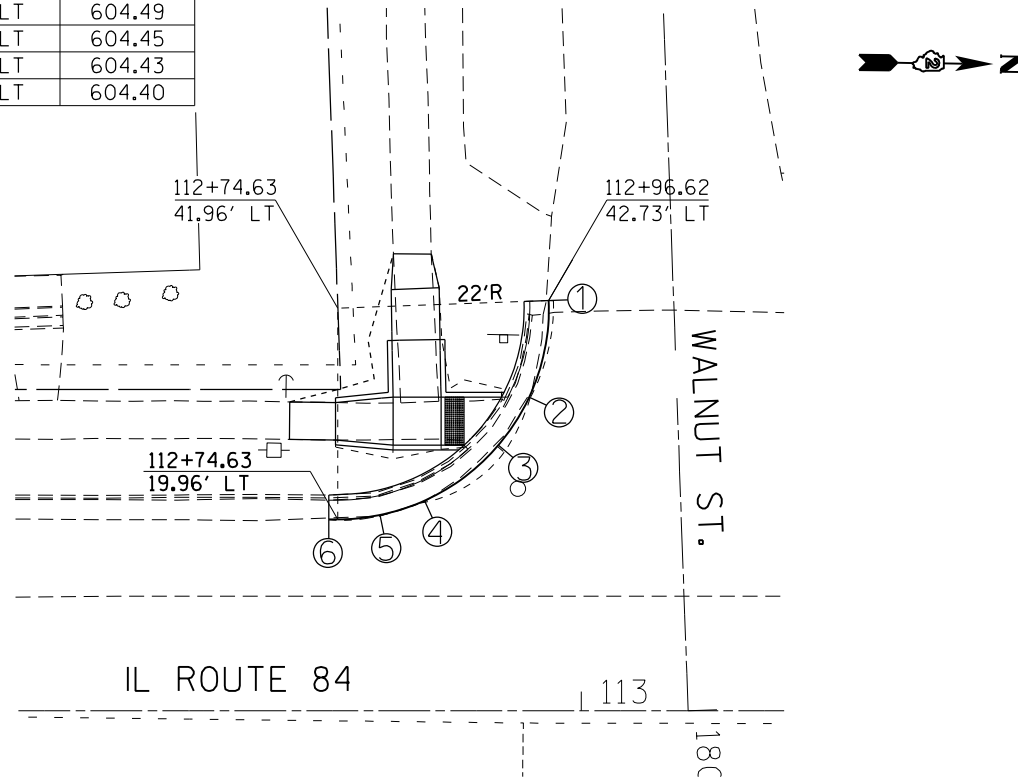
STATE OF ILLINOIS
DEPARTMENT OF TRANSPORTATION

LOCUST ST, MAIN ST AND ARGO FAY RD WITH IL ROUTE 84
PAVEMENT ELEVATIONS

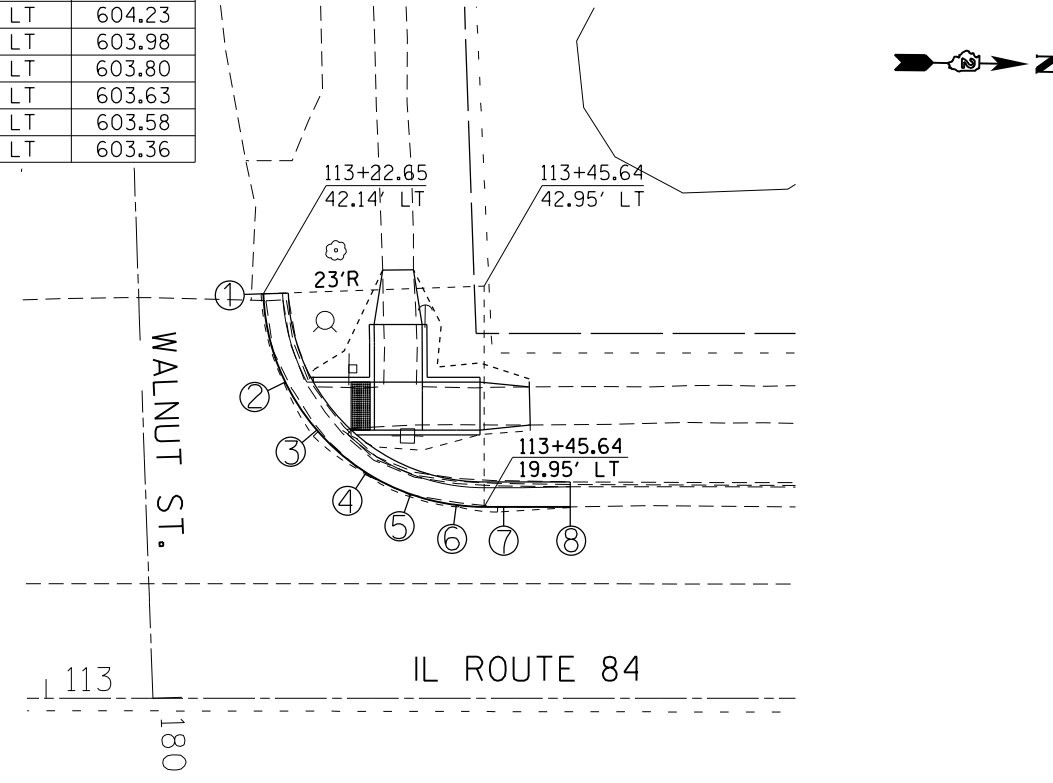
SCALE: 1" = 10' SHEET OF SHEETS STA. TO STA.

F.A.P. RTE.	SECTION	COUNTY	TOTAL SHEETS	SHEET NO.
308	D2 SW 2016-6	CARROLL	34	21
CONTRACT NO. 64L25				
ILLINOIS FED. AID PROJECT				

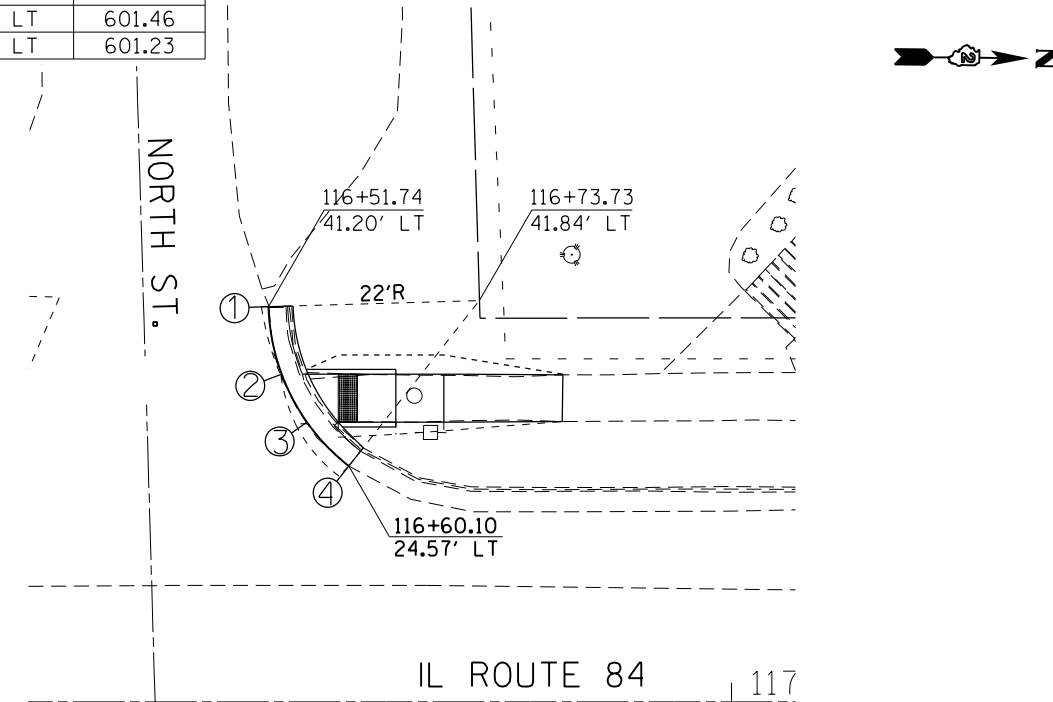
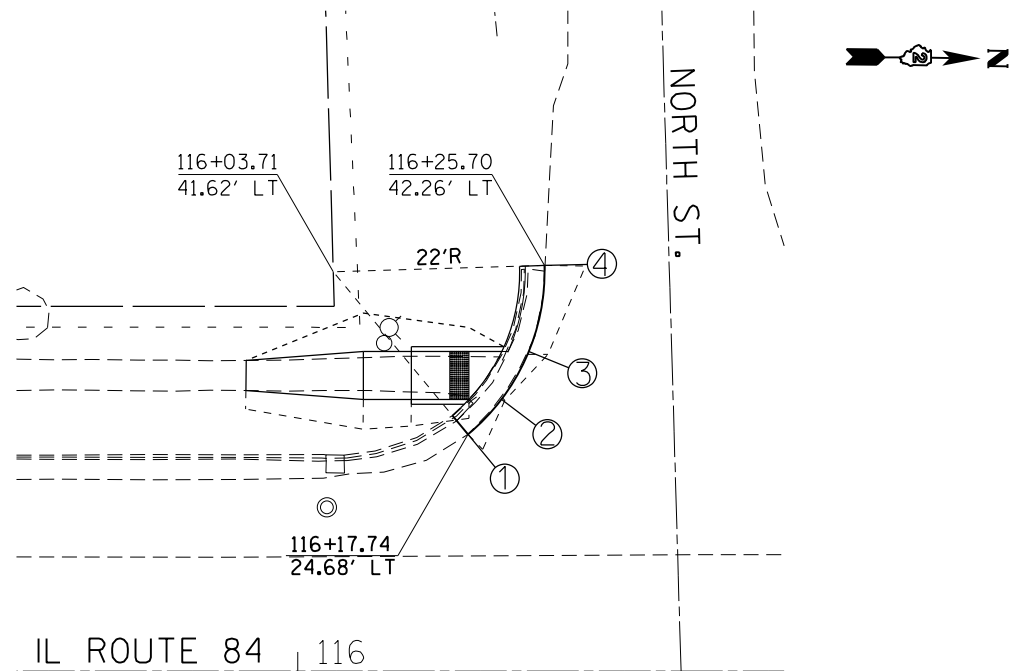
POINT	STATION	OFFSET	SIDE	ELEVATION
1	112+96.62	42.71	LT	604.61
2	112+94.58	32.66	LT	604.54
3	112+91.37	27.67	LT	604.49
4	112+83.66	21.80	LT	604.45
5	112+78.73	20.25	LT	604.43
6	112+73.68	19.95	LT	604.40



POINT	STATION	OFFSET	SIDE	ELEVATION
1	113+22.65	42.14	LT	604.40
2	113+24.93	32.94	LT	604.29
3	113+28.21	27.94	LT	604.23
4	113+33.44	23.36	LT	603.98
5	113+38.07	21.28	LT	603.80
6	113+42.45	20.41	LT	603.63
7	113+44.06	19.99	LT	603.58
8	113+54.63	19.95	LT	603.36



POINT	STATION	OFFSET	SIDE	ELEVATION
1	116+51.74	41.20	LT	601.66
2	116+53.11	34.43	LT	601.50
3	116+55.75	29.16	LT	601.46
4	116+60.10	24.57	LT	601.23



POINT	STATION	OFFSET	SIDE	ELEVATION
1	116+17.74	24.68	LT	601.14
2	116+21.23	28.31	LT	601.21
3	116+24.08	33.31	LT	601.26
4	116+25.70	42.26	LT	601.60

FILE NAME =	USER NAME = renkesrw	DESIGNED -	REVISED -
pw:\IL\084EBIDINTEG.illinois.gov\PIDOT\Documents\DOT Offices\District 2\Projects\2016\2016-04\2016-04-216-sht-elev.dwg		DRAWN -	REVISED -
Default	PLOT SCALE = 20.0000' / in.	CHECKED -	REVISED -
	PLOT DATE = Jan-09-2017 08:38:03 AM	DATE -	REVISED -

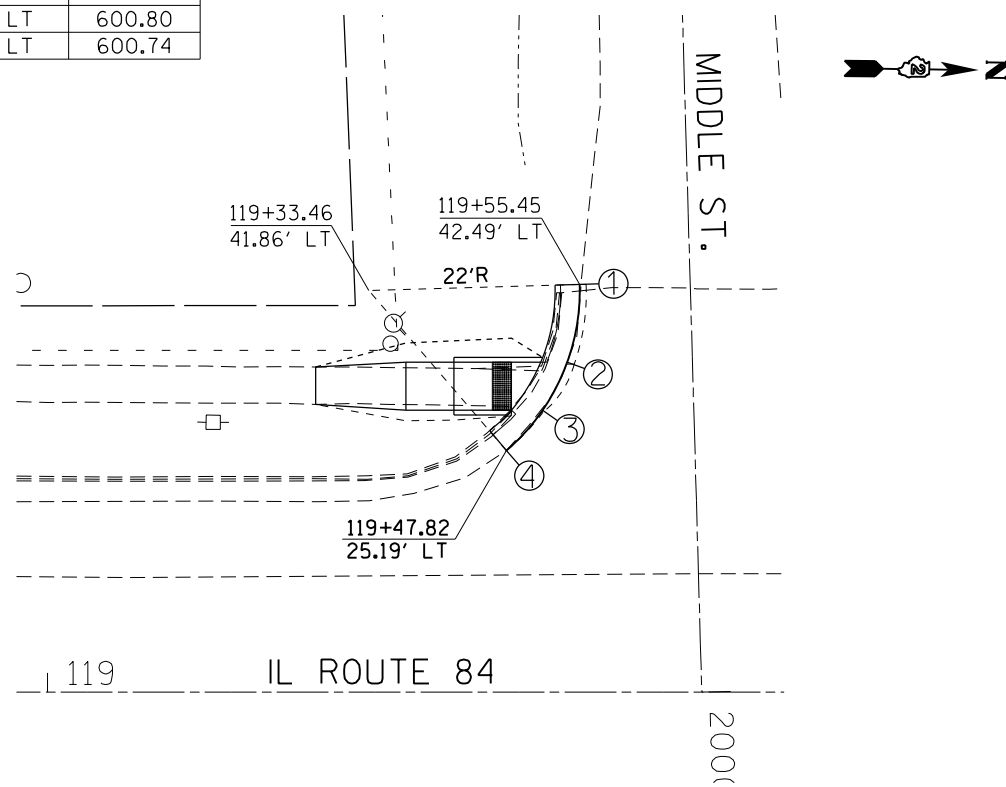
**STATE OF ILLINOIS
DEPARTMENT OF TRANSPORTATION**

**WALNUT AND NORTH ST WITH IL ROUTE 84
PAVEMENT ELEVATIONS**

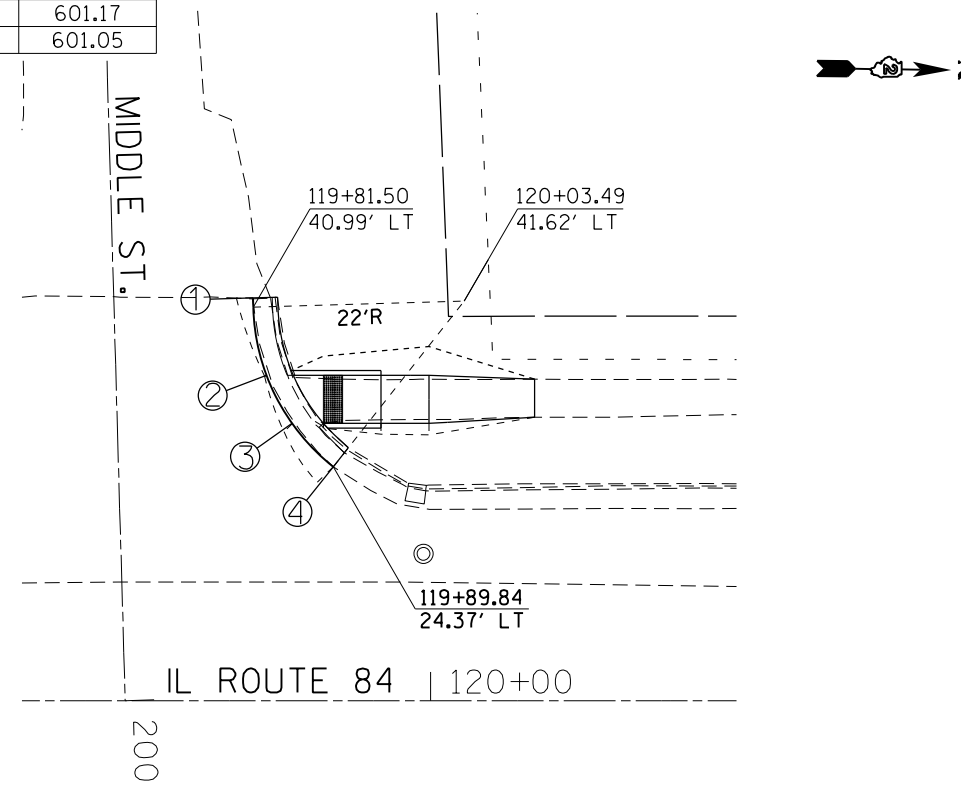
SCALE: 1" = 10' SHEET OF SHEETS STA. TO STA.

F.A.P. RTE.	SECTION	COUNTY	TOTAL SHEETS	SHEET NO.
308	D2 SW 2016-6	CARROLL	34	22
CONTRACT NO. 64L25			ILLINOIS FED. AID PROJECT	

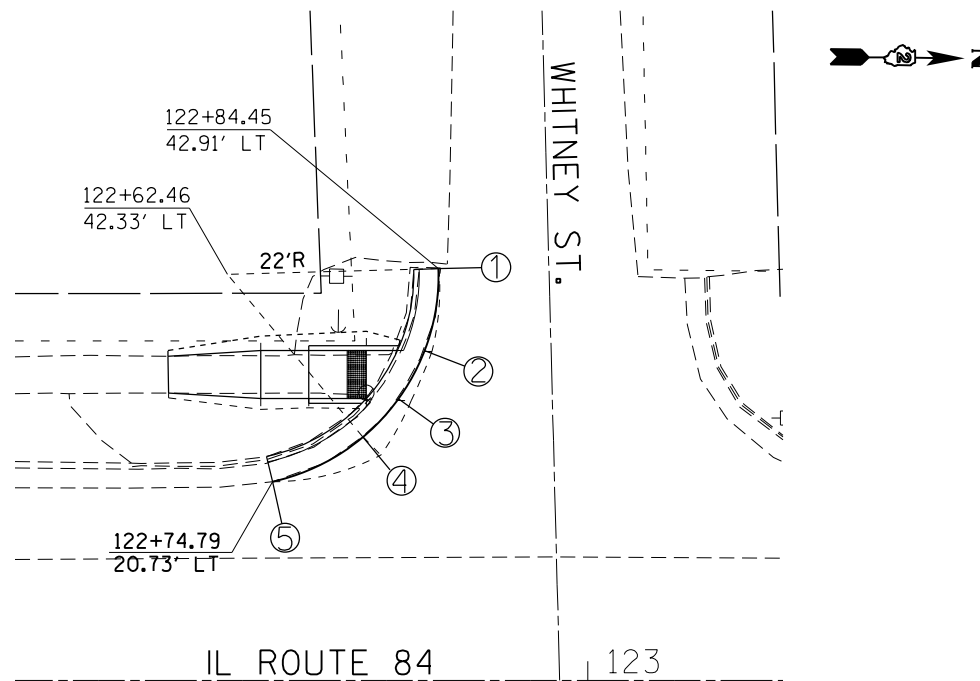
POINT	STATION	OFFSET	SIDE	ELEVATION
1	119+55.45	42.49	LT	601.15
2	119+54.14	34.37	LT	600.85
3	119+51.57	29.37	LT	600.80
4	119+47.82	25.19	LT	600.74



POINT	STATION	OFFSET	SIDE	ELEVATION
1	119+81.47	41.95	LT	601.40
2	119+82.90	33.89	LT	601.24
3	119+85.55	28.89	LT	601.17
4	119+89.84	24.37	LT	601.05



POINT	STATION	OFFSET	SIDE	ELEVATION
1	122+84.45	42.93	LT	602.79
2	122+82.98	34.41	LT	602.76
3	122+80.25	29.41	LT	602.76
4	122+76.53	25.44	LT	602.70
5	122+67.18	20.73	LT	602.29



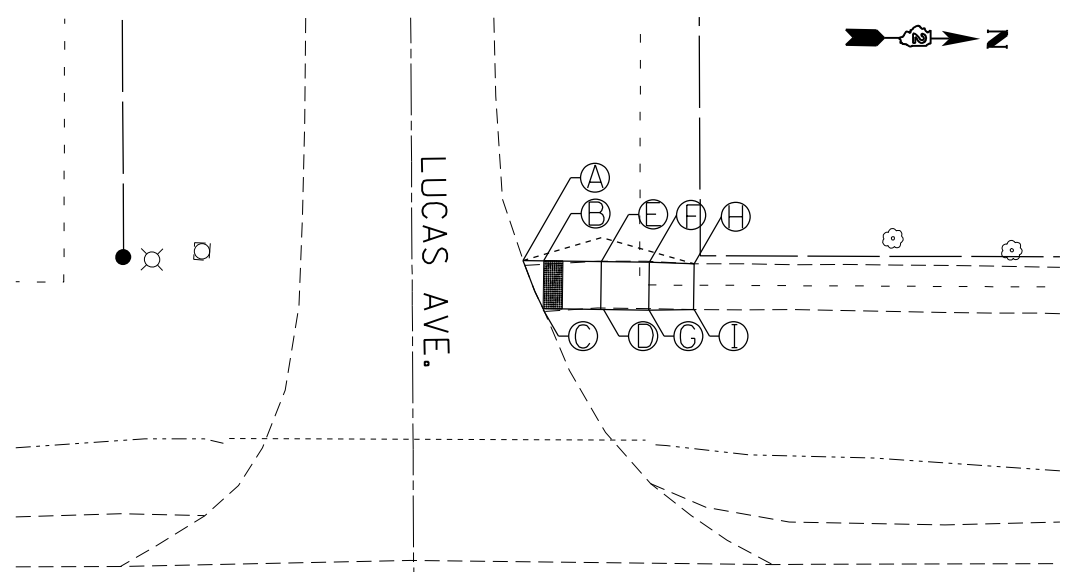
FILE NAME =	USER NAME = renkesrw	DESIGNED -	REVISED -
p:\119\084EBIDINTEG.illinois.gov\PWIDOT\Documents\DOT Offices\District 2\Projects\2016\2016-6\Drawings\AD\Drawings\2016-6\119-084EBIDINTEG\119-084EBIDINTEG.dwg		CHECKED -	REVISED -
Default	PLOT DATE = Jan-09-2017 09:17:33 AM	DATE -	REVISED -

**STATE OF ILLINOIS
DEPARTMENT OF TRANSPORTATION**

**MIDDLE ST AND WHITNEY ST WITH IL ROUTE 84
PAVEMENT ELEVATIONS**

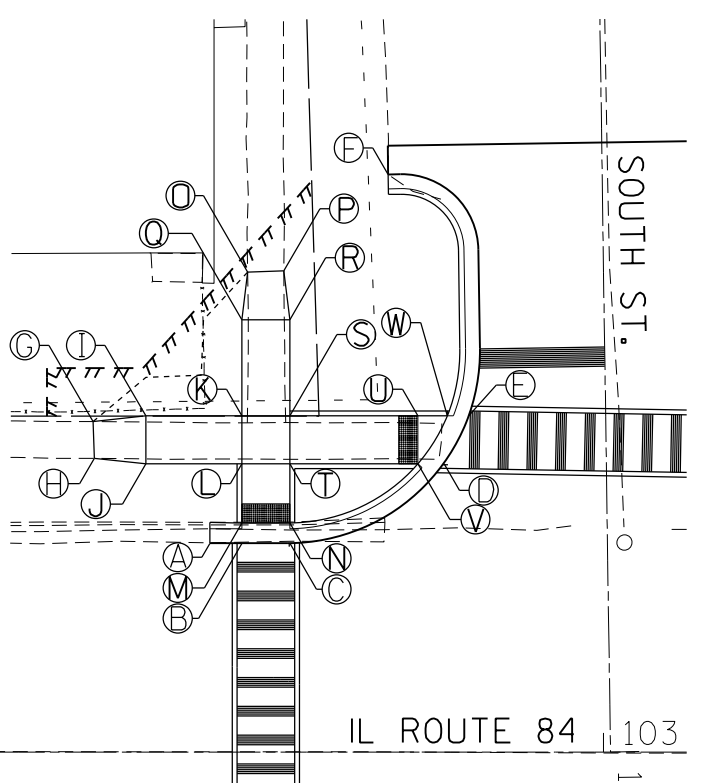
SCALE: 1" = 10' SHEET OF SHEETS STA. TO STA.

F.A.P. RTE.	SECTION	COUNTY	TOTAL SHEETS	SHEET NO.
308	D2 SW 2016-6	CARROLL	34	23
CONTRACT NO. 64L25				
ILLINOIS FED. AID PROJECT				

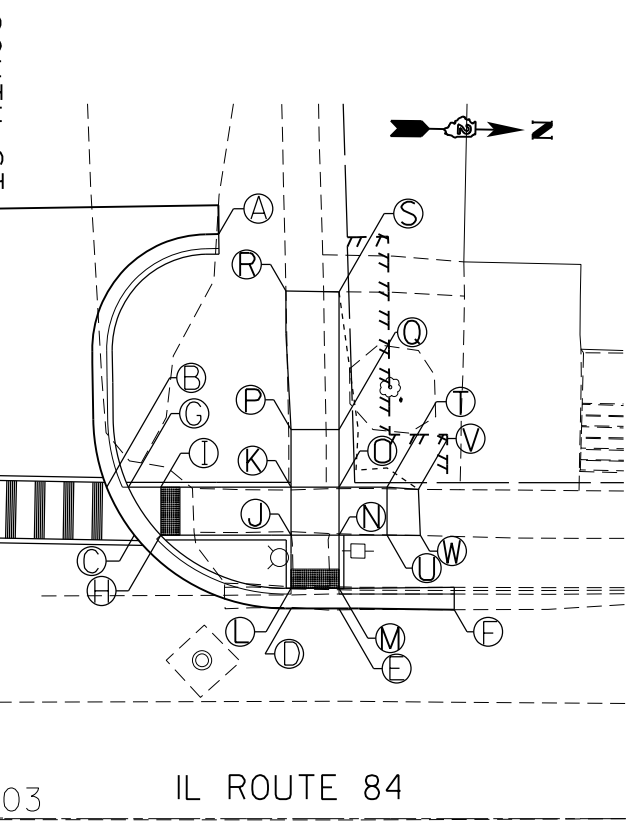


POINT	STATION	OFFSET	SIDE	ELEVATION
A	81+42.53	44.68	LT	602.64
B	81+44.70	44.65	LT	602.66
C	81+44.63	39.65	LT	602.62
D	81+50.63	39.57	LT	602.98
E	81+50.69	44.57	LT	603.02
F	81+55.69	44.51	LT	603.07
G	81+55.63	39.51	LT	603.03
H	81+60.34	44.33	LT	603.14
I	81+60.28	39.57	LT	603.19

POINT	STATION	OFFSET	SIDE	ELEVATION
A	102+59.00	21.77	LT	605.12
B	102+62.31	21.77	LT	605.15
C	102+67.31	21.77	LT	605.20
D	102+83.30	30.02	LT	605.47
E	102+85.94	35.02	LT	605.49
F	102+77.52	60.19	LT	605.52
G	102+46.80	34.43	LT	606.46
H	102+46.95	30.61	LT	606.38
I	102+52.31	35.02	LT	606.10
J	102+52.31	30.02	LT	606.05
K	102+62.31	35.02	LT	605.47
L	102+62.31	30.02	LT	605.42
M	102+62.31	23.85	LT	605.17
N	102+67.31	23.85	LT	605.22
O	102+62.93	49.99	LT	606.54
P	102+66.70	50.15	LT	606.57
Q	102+62.31	45.02	LT	606.17
R	102+67.31	45.02	LT	606.21
S	102+67.31	35.02	LT	605.51
T	102+67.31	30.02	LT	605.46
U	102+80.64	35.02	LT	605.51
V	102+80.64	30.02	LT	605.49
W	102+83.71	35.02	LT	605.51



POINT	STATION	OFFSET	SIDE	ELEVATION
A	103+26.22	60.89	LT	605.10
B	103+14.53	34.52	LT	604.90
C	103+17.41	29.52	LT	604.87
D	103+33.73	21.90	LT	604.46
E	103+38.73	21.90	LT	604.41
F	103+50.61	21.75	LT	604.14
G	103+16.79	34.52	LT	604.92
H	103+20.17	29.52	LT	604.89
I	103+20.17	34.52	LT	604.95
J	103+33.73	29.52	LT	604.70
K	103+33.73	34.52	LT	604.75
L	103+33.73	23.98	LT	604.48
M	103+38.73	23.98	LT	604.43
N	103+38.73	29.52	LT	604.65
O	103+38.73	35.52	LT	604.70
P	103+33.73	40.52	LT	604.80
Q	103+38.73	40.52	LT	604.81
R	103+33.22	54.96	LT	605.13
S	103+38.73	54.88	LT	605.19
T	103+43.73	34.52	LT	604.70
U	103+43.73	29.52	LT	604.63
V	103+47.02	34.30	LT	604.71
W	103+47.22	29.50	LT	604.60

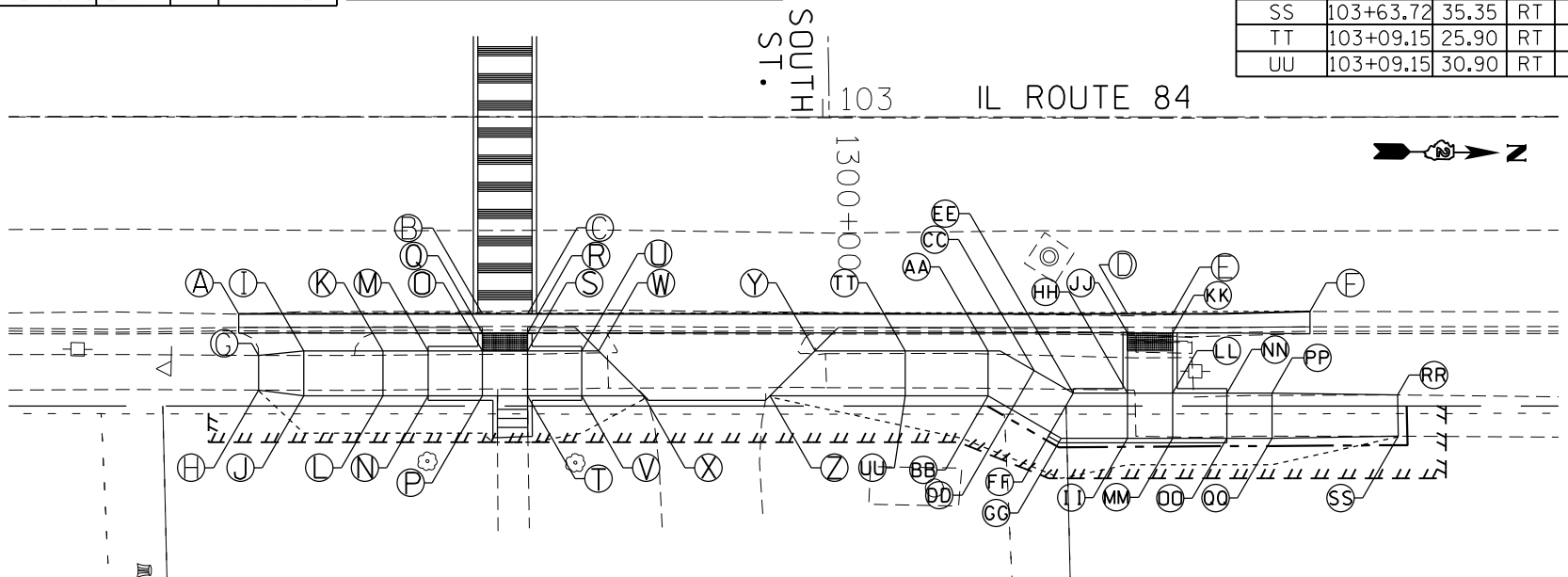


POINT	STATION	OFFSET	SIDE	ELEVATION
A	102+35.33	21.81	RT	605.14
B	102+62.31	21.81	RT	605.05
C	102+67.31	21.81	RT	605.00
D	103+33.73	21.81	RT	604.32
E	103+38.73	21.81	RT	604.27
F	103+53.93	21.56	RT	604.05
G	102+37.56	26.41	RT	605.70
H	102+37.60	30.26	RT	605.74
I	102+42.56	25.90	RT	605.55
J	102+42.53	30.90	RT	605.60
K	102+51.31	25.90	RT	605.32

POINT	STATION	OFFSET	SIDE	ELEVATION
L	102+51.31	30.90	RT	605.37
M	102+56.31	25.90	RT	605.20
N	102+56.31	30.90	RT	605.25
O	102+62.31	25.90	RT	605.08
P	102+62.31	30.90	RT	605.12
Q	102+62.31	23.90	RT	605.07
R	102+67.31	23.90	RT	605.02
S	102+67.31	25.90	RT	605.03
T	102+67.31	30.90	RT	605.09
U	102+73.31	25.90	RT	605.09
V	102+73.31	30.90	RT	605.11

POINT	STATION	OFFSET	SIDE	ELEVATION
W	102+75.18	25.90	RT	605.10
X	102+80.18	30.90	RT	605.17
Y	102+99.15	25.90	RT	605.31
Z	102+94.15	30.90	RT	605.27
AA	103+19.64	25.90	RT	604.55
BB	103+18.30	30.90	RT	604.60
CC	103+23.40	28.07	RT	604.53
DD	103+20.90	32.40	RT	604.57
EE	103+27.73	30.57	RT	604.47
FF	103+25.23	34.90	RT	604.52
GG	103+26.39	35.57	RT	604.52

POINT	STATION	OFFSET	SIDE	ELEVATION
HH	103+33.73	30.57	RT	604.41
II	103+33.73	35.57	RT	604.46
JJ	103+33.73	23.90	RT	604.34
KK	103+38.73	23.90	RT	604.29
LL	103+38.73	30.57	RT	604.36
MM	103+38.73	35.57	RT	604.41
NN	103+44.73	30.57	RT	604.66
OO	103+44.73	35.57	RT	604.71
PP	103+49.73	30.57	RT	604.71
QQ	103+49.73	35.57	RT	604.71
RR	103+63.64	30.79	RT	604.97
SS	103+63.72	35.35	RT	605.03
TT	103+09.15	25.90	RT	604.94
UU	103+09.15	30.90	RT	605.85



FILE NAME = ... USER NAME = renkesrw ... DESIGNED - ... REVISIONS - ...
 PLOT SCALE = 20.0000' / in. CHECKED - ... REVISIONS - ...
 PLOT DATE = Jan-09-2017 09:18:58 AM DATE - ... REVISIONS - ...

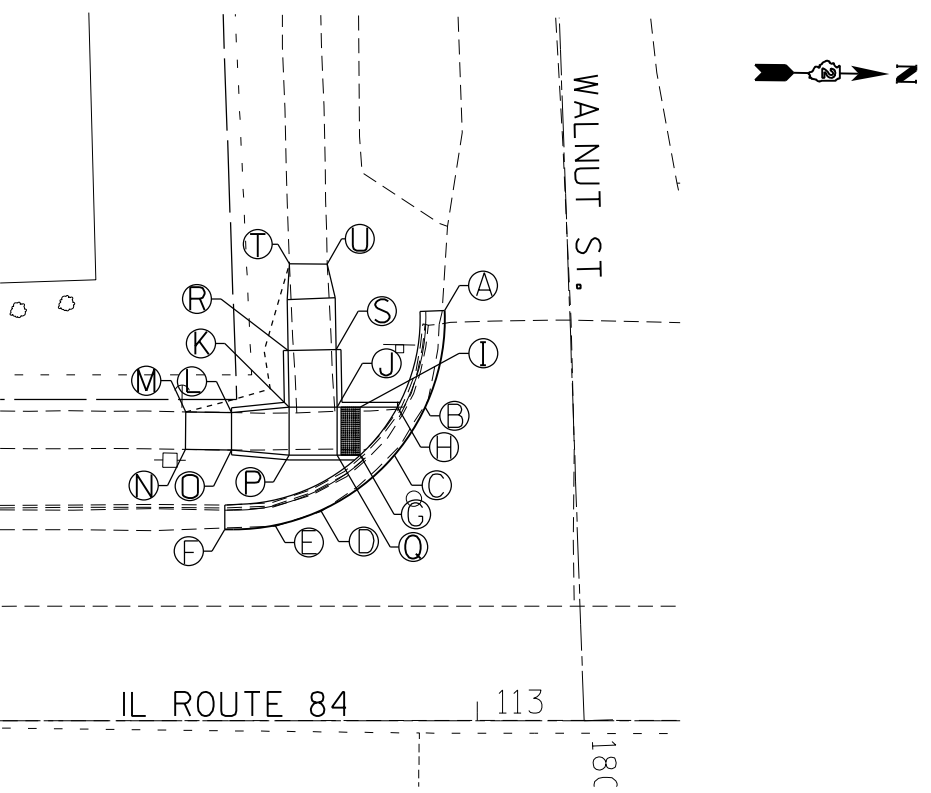
STATE OF ILLINOIS
DEPARTMENT OF TRANSPORTATION

LUCAS AVE AND SOUTH ST WITH IL ROUTE 84
SIDEWALK RAMP DETAIL

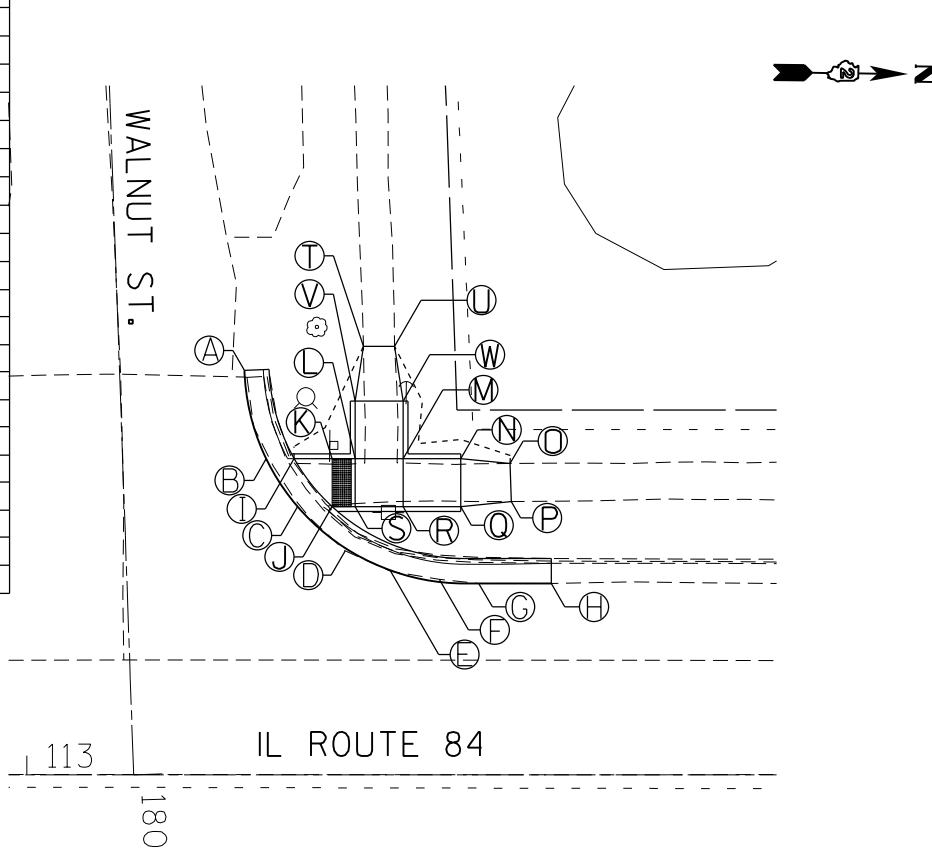
F.A.P. RTE. 308 SECTION D2 SW 2016-6 COUNTY CARROLL TOTAL SHEETS 34 SHEET NO. 24 CONTRACT NO. 64L25 ILLINOIS FED. AID PROJECT

SCALE: 1" = 10' SHEET OF SHEETS STA. TO STA.

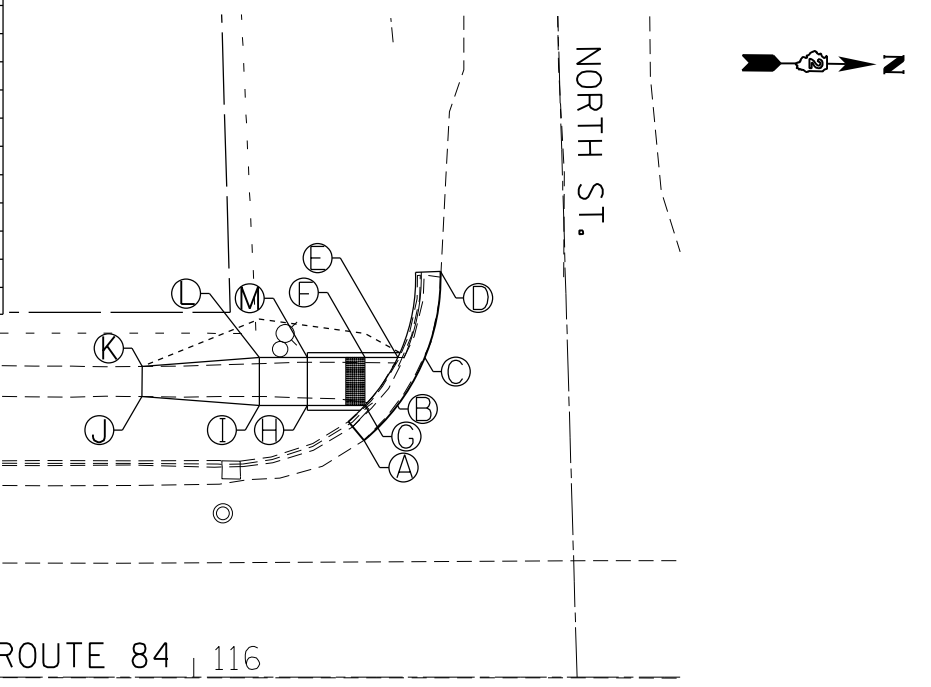
POINT	STATION	OFFSET	SIDE	ELEVATION
A	112+96.62	42.71	LT	604.61
B	112+94.58	32.66	LT	604.54
C	112+91.37	27.67	LT	604.49
D	112+83.66	21.80	LT	604.45
E	112+78.73	20.25	LT	604.43
F	112+73.68	19.95	LT	604.40
G	112+87.79	27.66	LT	604.47
H	112+91.69	32.66	LT	604.48
I	112+87.79	32.68	LT	604.52
J	112+85.39	32.67	LT	604.64
K	112+80.39	32.67	LT	604.69
L	112+74.39	32.12	LT	605.08
M	112+69.63	32.19	LT	605.15
N	112+69.60	28.29	LT	605.07
O	112+74.39	28.21	LT	605.00
P	112+80.39	27.67	LT	604.64
Q	112+85.37	27.67	LT	604.59
R	112+80.28	38.58	LT	604.97
S	112+85.28	38.66	LT	604.92
T	112+80.60	43.90	LT	605.23
U	112+84.55	44.05	LT	605.18



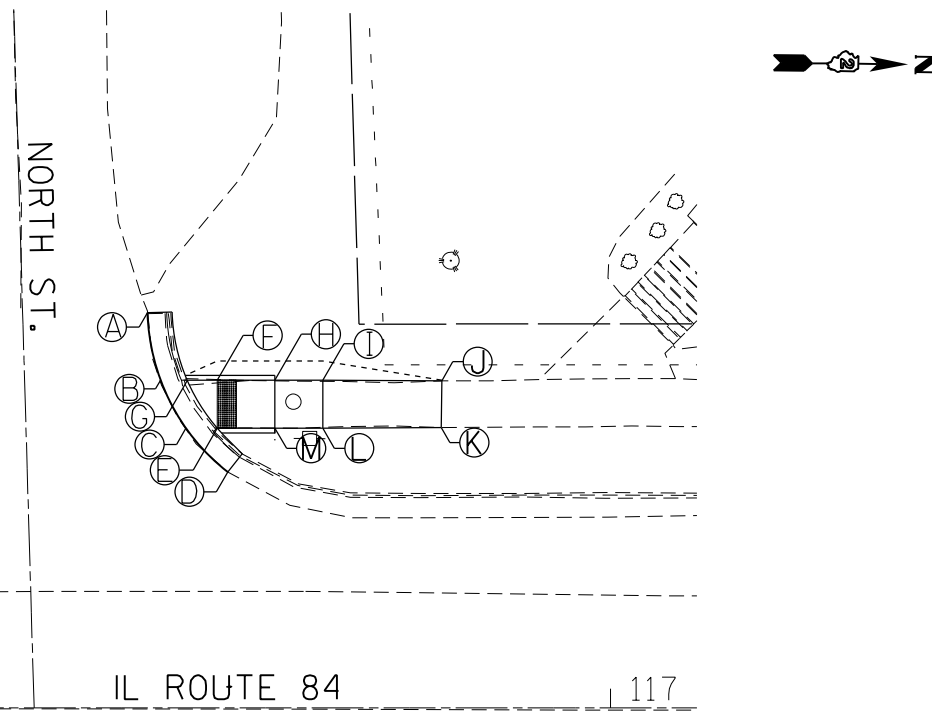
POINT	STATION	OFFSET	SIDE	ELEVATION
A	113+22.65	42.14	LT	604.40
B	113+24.93	32.94	LT	604.29
C	113+28.21	27.94	LT	604.23
D	113+33.44	23.36	LT	603.98
E	113+38.07	21.28	LT	603.80
F	113+42.45	20.41	LT	603.63
G	113+44.06	19.99	LT	603.58
H	113+54.63	19.95	LT	603.36
I	113+27.84	32.94	LT	604.23
J	113+31.79	27.94	LT	604.17
K	113+31.79	32.94	LT	604.22
L	113+34.20	32.94	LT	604.31
M	113+39.20	32.94	LT	604.36
N	113+45.20	32.94	LT	604.60
O	113+50.35	32.45	LT	604.73
P	113+50.47	28.47	LT	604.58
Q	113+45.20	27.94	LT	604.55
R	113+39.20	27.94	LT	604.31
S	113+34.20	27.94	LT	604.26
T	113+35.08	44.63	LT	604.83
U	113+38.30	44.63	LT	604.71
V	113+34.20	38.94	LT	604.52
W	113+39.20	38.95	LT	604.60



POINT	STATION	OFFSET	SIDE	ELEVATION
A	116+17.74	24.68	LT	601.14
B	116+21.23	28.31	LT	601.21
C	116+24.08	33.31	LT	601.26
D	116+25.70	42.26	LT	601.60
E	116+21.26	33.31	LT	601.20
F	116+17.85	33.31	LT	601.23
G	116+17.85	28.31	LT	601.15
H	116+11.85	28.31	LT	601.39
I	116+06.85	28.31	LT	601.44
J	115+94.59	29.24	LT	602.06
K	115+94.64	32.39	LT	602.14
L	116+06.85	33.31	LT	601.49
M	116+11.85	33.31	LT	601.44



POINT	STATION	OFFSET	SIDE	ELEVATION
A	116+51.74	41.20	LT	601.66
B	116+53.11	34.43	LT	601.50
C	116+55.75	29.16	LT	601.46
D	116+60.10	24.57	LT	601.23
E	116+59.03	29.16	LT	601.49
F	116+59.00	34.16	LT	601.55
G	116+55.90	34.16	LT	601.52
H	116+65.03	34.16	LT	601.79
I	116+70.03	34.16	LT	601.84
J	116+82.41	34.08	LT	601.79
K	116+82.36	29.23	LT	601.66
L	116+70.03	29.16	LT	601.78
M	116+65.03	29.16	LT	601.73



FILE NAME =	USER NAME = renkesrw	DESIGNED -	REVISED -
p:\11\084EBID\INTEG.illinois.gov\PIWIDOT\Documents\IDOT Offices\District 2\Projects\0204216\Drawings\0204216-shd-detail.dwg		CHECKED -	REVISED -
Default	PLOT DATE = Jan-09-2017 09:19:45 AM	DATE -	REVISED -

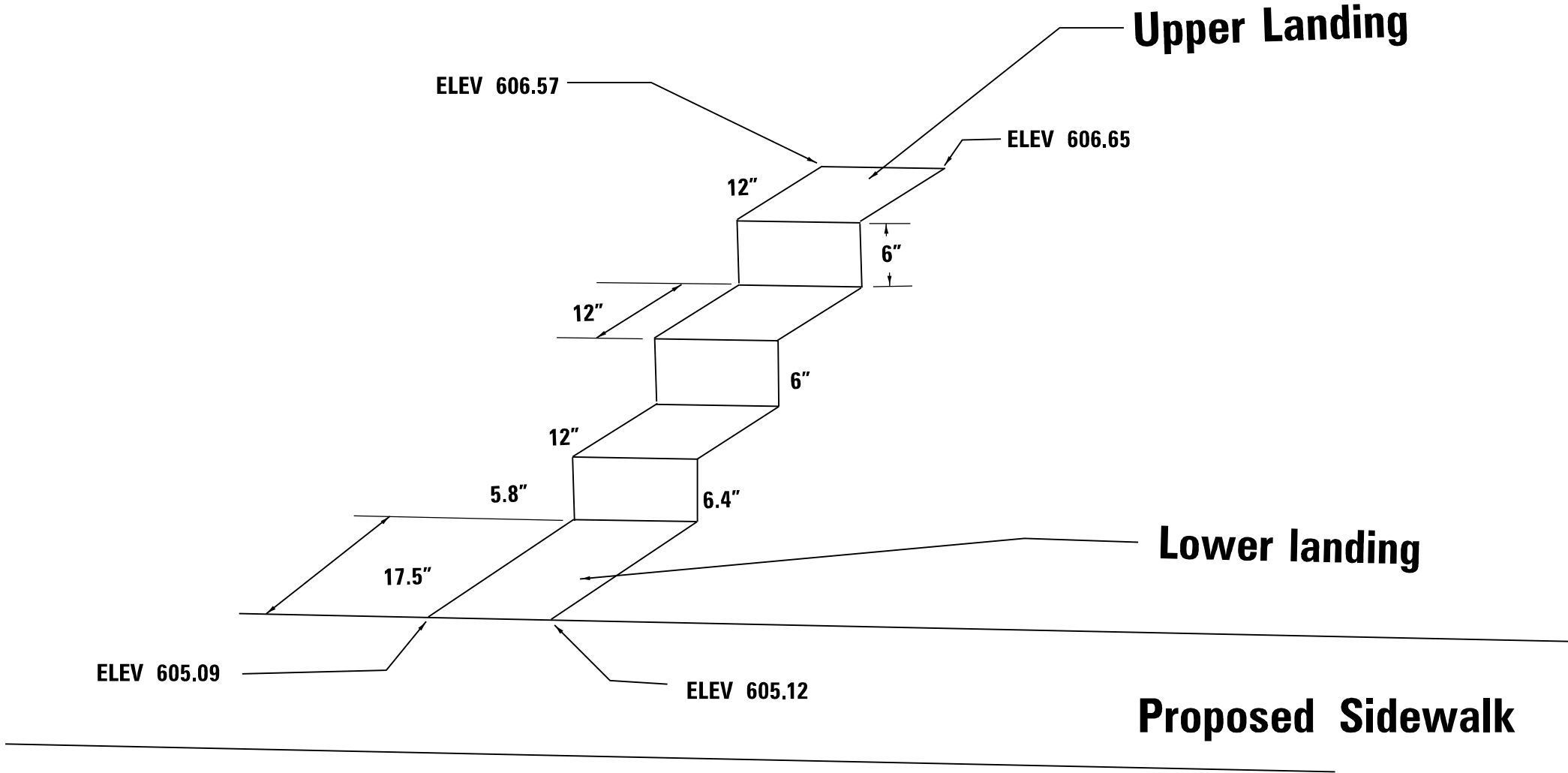
**STATE OF ILLINOIS
DEPARTMENT OF TRANSPORTATION**

**WALNUT AND NORTH ST WITH IL ROUTE 84
SIDEWALK RAMP DETAIL**

SCALE: 1" = 10' SHEET OF SHEETS STA. TO STA.

F.A.P. RTE.	SECTION	COUNTY	TOTAL SHEETS	SHEET NO.
308	D2 SW 2016-6	CARROLL	34	26
				CONTRACT NO. 64L25
ILLINOIS FED. AID PROJECT				

Steps Detail RT STA 102 + 65



FILE NAME =	USER NAME = renkesrw	DESIGNED -	REVISED -
p:\11\084EBIDINTEG.illinois.gov\PIWIDOT\Documents\DOT Offices\District 2\Projects\2016\2016-6\Drawings\GADsheets\204216-sht-detail.dwg		DRAWN -	REVISED -
Default	PLOT SCALE = 20.0000' / in.	CHECKED -	REVISED -
	PLOT DATE = Jan-09-2017 10:52:14 AM	DATE -	REVISED -

**STATE OF ILLINOIS
DEPARTMENT OF TRANSPORTATION**

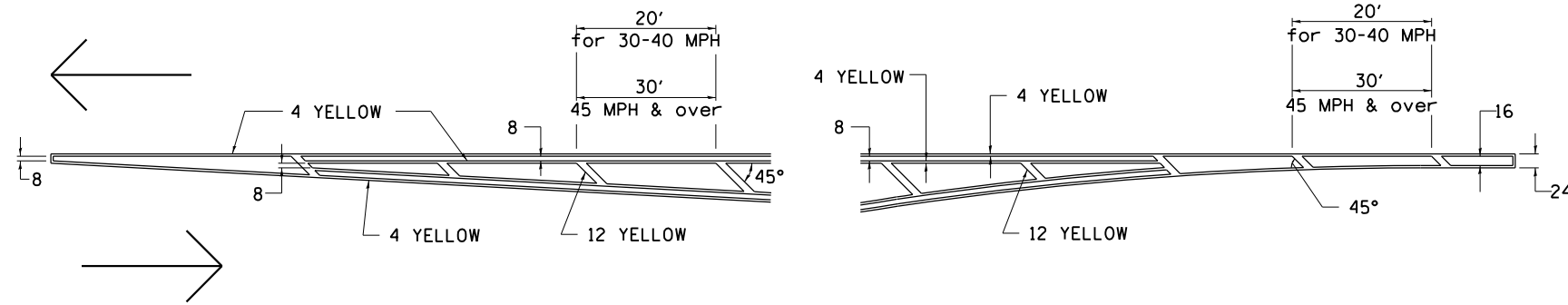
**LUCAS AVE AND SOUTH ST WITH IL ROUTE 84
SIDEWALK RAMP DETAIL**

SCALE: 1" = 10' SHEET OF SHEETS STA. TO STA.

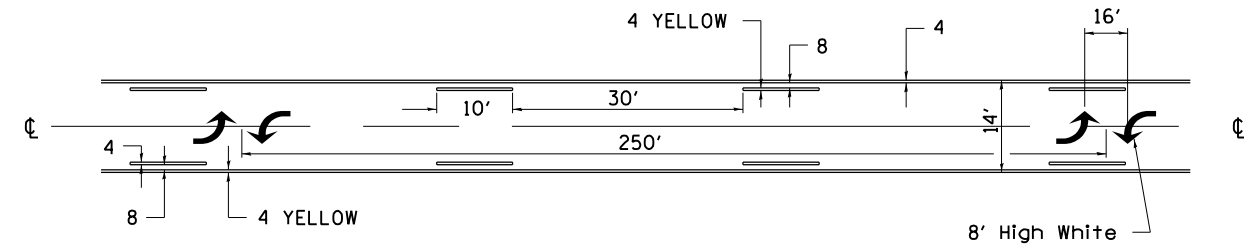
F.A.P. RTE.	SECTION	COUNTY	TOTAL SHEETS	SHEET NO.
308	D2 SW 2016-6	CARROLL	34	28
				CONTRACT NO. 64L25
ILLINOIS FED. AID PROJECT				

TYPICAL PAVEMENT MARKINGS

TYPICAL PAVEMENT MARKING FOR FLUSH MEDIAN AT LEFT TURN LANE

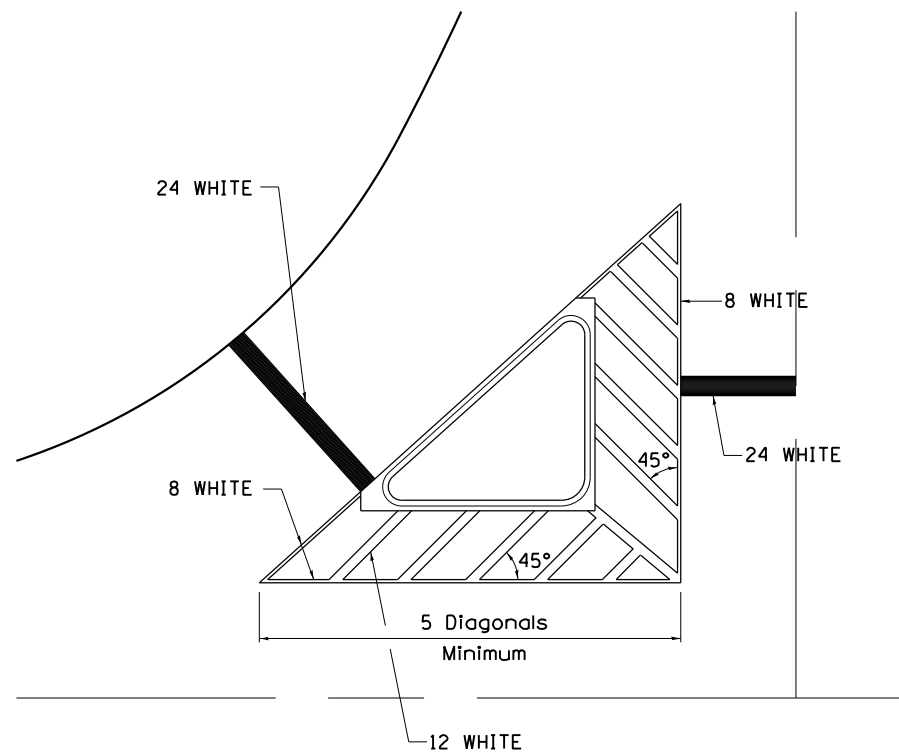


MEDIAN PAVEMENT MARKING



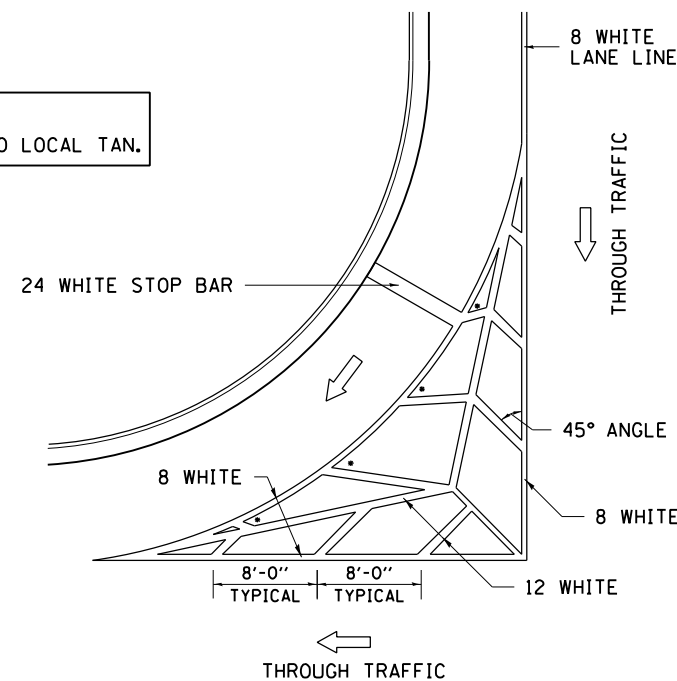
•• ALL DIMENSIONS ARE IN INCHES UNLESS OTHERWISE NOTED.

TYPICAL ISLAND OFFSET SHOULDER WIDTH



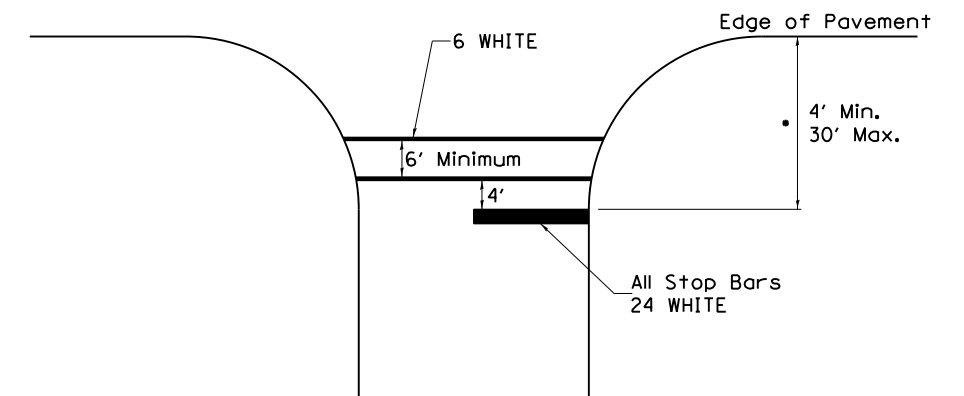
TYPICAL MARKING FOR PAINTED ISLANDS

NOTE:
* 45° TO LOCAL TAN.



STANDARD CROSSWALK MARKING

See Schedules for Locations

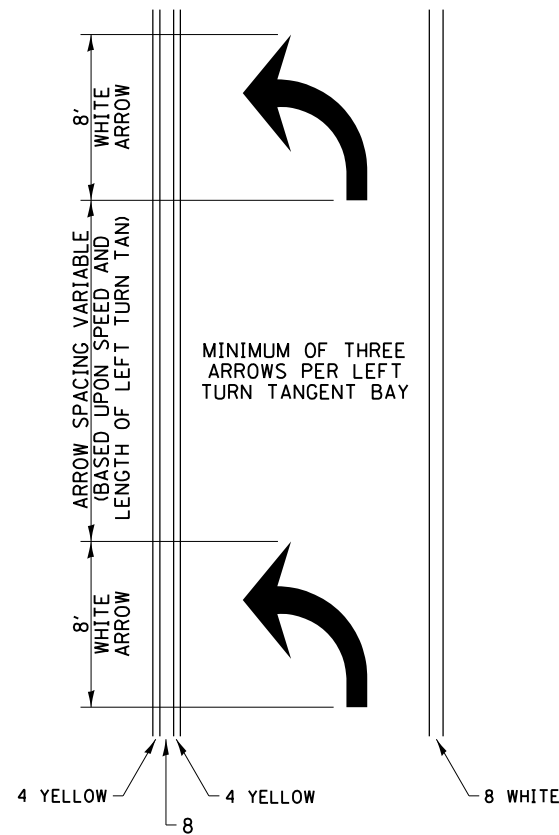


• Distance to the nearest edge of the intersecting roadway in the absence of a marked crosswalk.

FILE NAME =	USER NAME = rankearw	DESIGNED -	REVISED - 6-27-14	STATE OF ILLINOIS DEPARTMENT OF TRANSPORTATION	REGION 2 / DISTRICT 2 STANDARD			F.A.P. RTE.	SECTION	COUNTY	TOTAL SHEETS	SHEET NO.
pw:\jll\084EBIDINTEG\illinois.gov\PWIDOT\Documents\IDOT Offices\District 2\Projects\2016\2016-04\2016-04-216-shd-detail.dwg	DATE = 3-05-12	CHECKED -	REVISED -					308	D2 SW 2016-6	CARROLL	34	31
Default	PLOT SCALE = 20.0000' / in.	DATE -	REVISED -		SCALE: 1" = 10'			CONTRACT NO. 64L25				
	PLOT DATE = Jan-09-2017 10:31:52 AM	DATE -	REVISED -		SHEET NO. OF SHEETS STA. TO STA.			FED. ROAD DIST. NO. ILLINOIS FED. AID PROJECT				

TYPICAL PAVEMENT MARKINGS

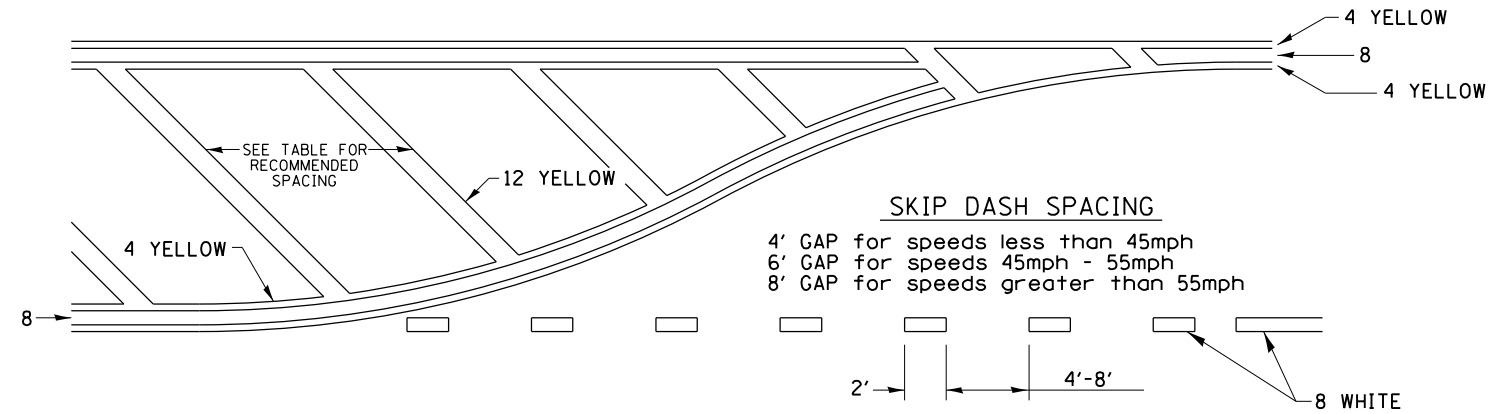
ARROW LAYOUT



- ◀ ONE-WAY AMBER MARKER
- ◁ ONE-WAY CRYSTAL MARKER
- ◆ TWO-WAY AMBER MARKER

ALL DIMENSIONS ARE IN INCHES UNLESS OTHERWISE NOTED.

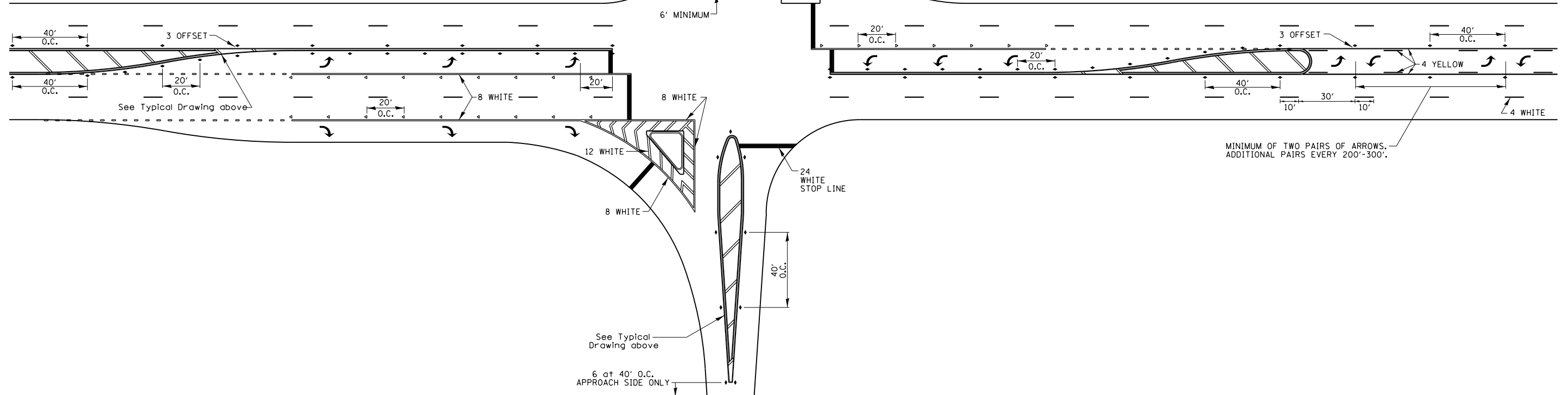
TYPICAL PAVEMENT MARKING FOR FLUSH MEDIAN



RECOMMENDED SPACING BETWEEN DIAGONALS (IN FEET)

Speed Limit Range	Continuous Median Area	Intersection Channelization	Objects (Islands)
less than 30MPH	50'	15'	10'
30-40MPH	75'	20'	15'
45MPH & over	75'	30'	20'

NOTE: if the spacing recommended in the Table does not permit at least five diagonal lines in the area being marked, the spacing from the next lowest speed range should be used. The recommended spacing is measured parallel to the pavement center line.



FILE NAME =	USER NAME = rankearw	DESIGNED -	REVISED - 6-27-14
p:\11084EBIDINTEG.illinois.gov\PIWIDOT\Documents\DOT Offices\District 2\Projects\2016\2016-04-216-sht-detail.dwg		DRAWN -	REVISED - 3-05-12
Default	PLOT SCALE = 20.0000' / in.	CHECKED -	REVISED -
	PLOT DATE = Jan-09-2017 10:32:13 AM	DATE -	REVISED -

STATE OF ILLINOIS
DEPARTMENT OF TRANSPORTATION

REGION 2 / DISTRICT 2 STANDARD

SCALE: 1" = 10' SHEET NO. OF SHEETS STA. TO STA.

F.A.P. RTE.	SECTION	COUNTY	TOTAL SHEETS	SHEET NO.
308	D2 SW 2016-6	CARROLL	34	32
CONTRACT NO. 64L25				
FED. ROAD DIST. NO. ILLINOIS FED. AID PROJECT				

DETAIL OF CONCRETE STEPS

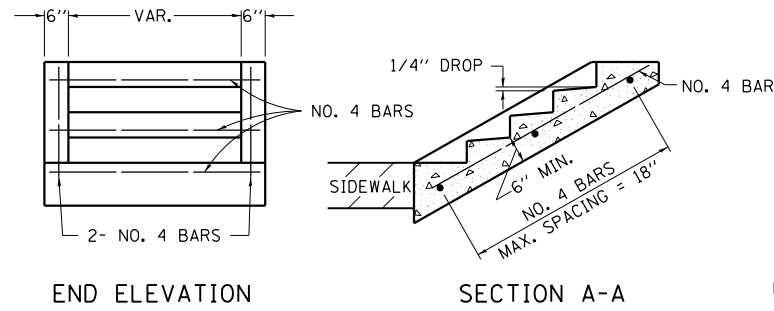


TABLE OF TREADS & RISERS

SLOPE	TREAD	RISER
1:2	12"	6"
1:3	15"	5"
1:4	17"	4 1/4"

WHERE SLOPES FALL BETWEEN THOSE SHOWN IN THE TABLE ABOVE, THE STAIR RAIL SHOULD FIT THE SLOPE AND THE TREAD IN INCHES x THE RISER IN INCHES SHOULD BE BETWEEN 72 AND 78.

EXAMPLE:

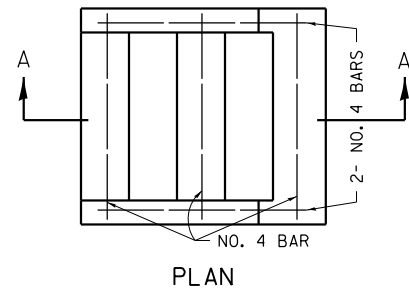
FOR A 1:4 SLOPE USE $y = \text{RISER HEIGHT}$ $4y^2 = 75"$.
 SOLVING $y^2 = \frac{75"}{4}$, $y = 4.3"$ (USE 4 1/4" FOR CONVENIENCE.)

TREAD WOULD THEN BE $4 \frac{1}{4}" \times 4 = 17"$

COST OF REINFORCEMENT BARS SHALL BE PAID FOR AT THE CONTRACT UNIT PRICE PER LBS FOR REINFORCEMENT BARS.

CLASS SI CONCRETE SHALL BE USED THROUGHOUT, WHICH SHALL BE PAID FOR AT THE CONTRACT UNIT PRICE PER CUBIC YARD FOR CONCRETE STEPS

ALL DIMENSIONS ARE IN INCHES UNLESS OTHERWISE NOTED.



REVISED - 8-27-13
 REVISED - 10-03-11

DETAIL OF CONCRETE STEPS 71.4

PLOT DATE = Jan-09-2017 10:33:04 AM

REVISED -	REGION 2 / DISTRICT 2 STANDARD	F.A.P. RTE.	SECTION	COUNTY	TOTAL SHEETS	SHEET NO.	
REVISED -		308	D2 SW 2016-6	CARROLL	34	34	
REVISED -		CONTRACT NO. 64L25					
REVISED -		SCALE: 20.0000' / 1"	SHEET NO.	OF	SHEETS	STA.	TO STA.
REVISED -		FED. ROAD DIST. NO.		ILLINOIS FED. AID PROJECT			