

INDEX OF SHEETS

1. COVER SHEET
2. GENERAL NOTES
3. SUMMARY OF QUANTITIES
4. TYPICAL SECTION
5. TRAFFIC CONTROL AND PROTECTION (SPECIAL)
- 6-7. TRAFFIC CONTROL AND PROTECTION, STANDARD (SPECIAL)
8. PLAN VIEW SOUTH APPROACH SLAB
9. EXISTING APPROACH SLAB DETAILS, FOR INFORMATION ONLY

STANDARDS

- 701001-02 OFF-ROAD OPERATIONS 2L, 2W, MORE THAN 15' (4.5 m) AWAY
- 701006-05 OFF-ROAD OPERATIONS 2L, 2W, 15' (4.5 m) TO 24" (600 mm) FROM PAVEMENT EDGE
- 701301-04 LANE CLOSURE, 2L, 2W, SHORT TIME OPERATIONS
- 701601-09 URBAN LANE CLOSURE, MULTILANE, 1W OR 2W WITH NONTRAVERSABLE MEDIAN
- 701801-06 SIDEWALK, CORNER OR CROSSWALK CLOSURE
- 701901-06 TRAFFIC CONTROL DEVICES

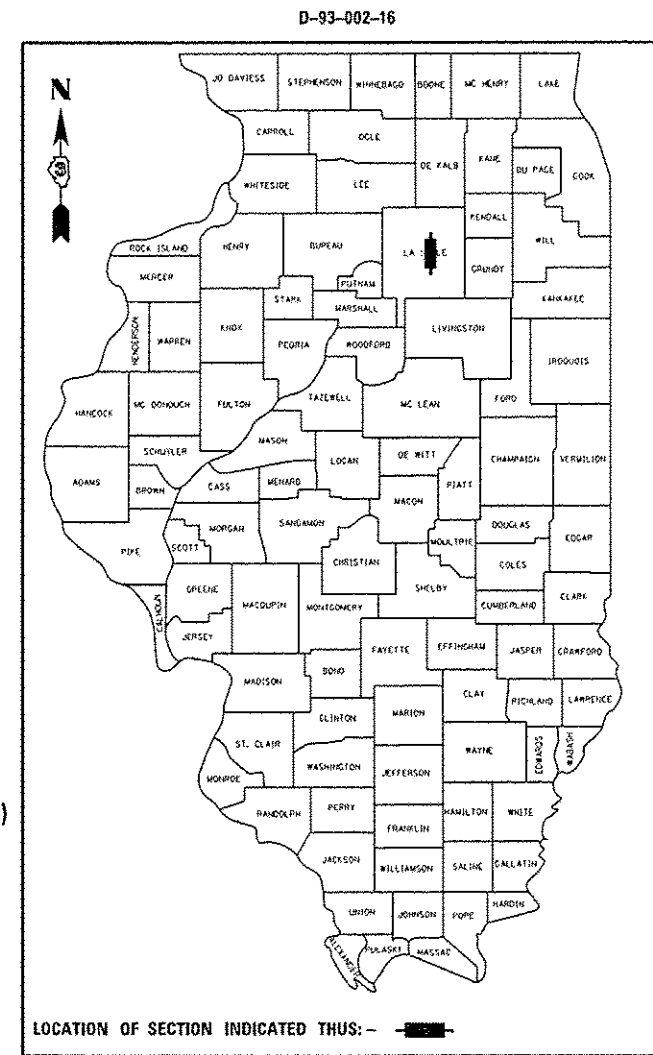
**STATE OF ILLINOIS
DEPARTMENT OF TRANSPORTATION**

**PROPOSED
HIGHWAY PLANS**

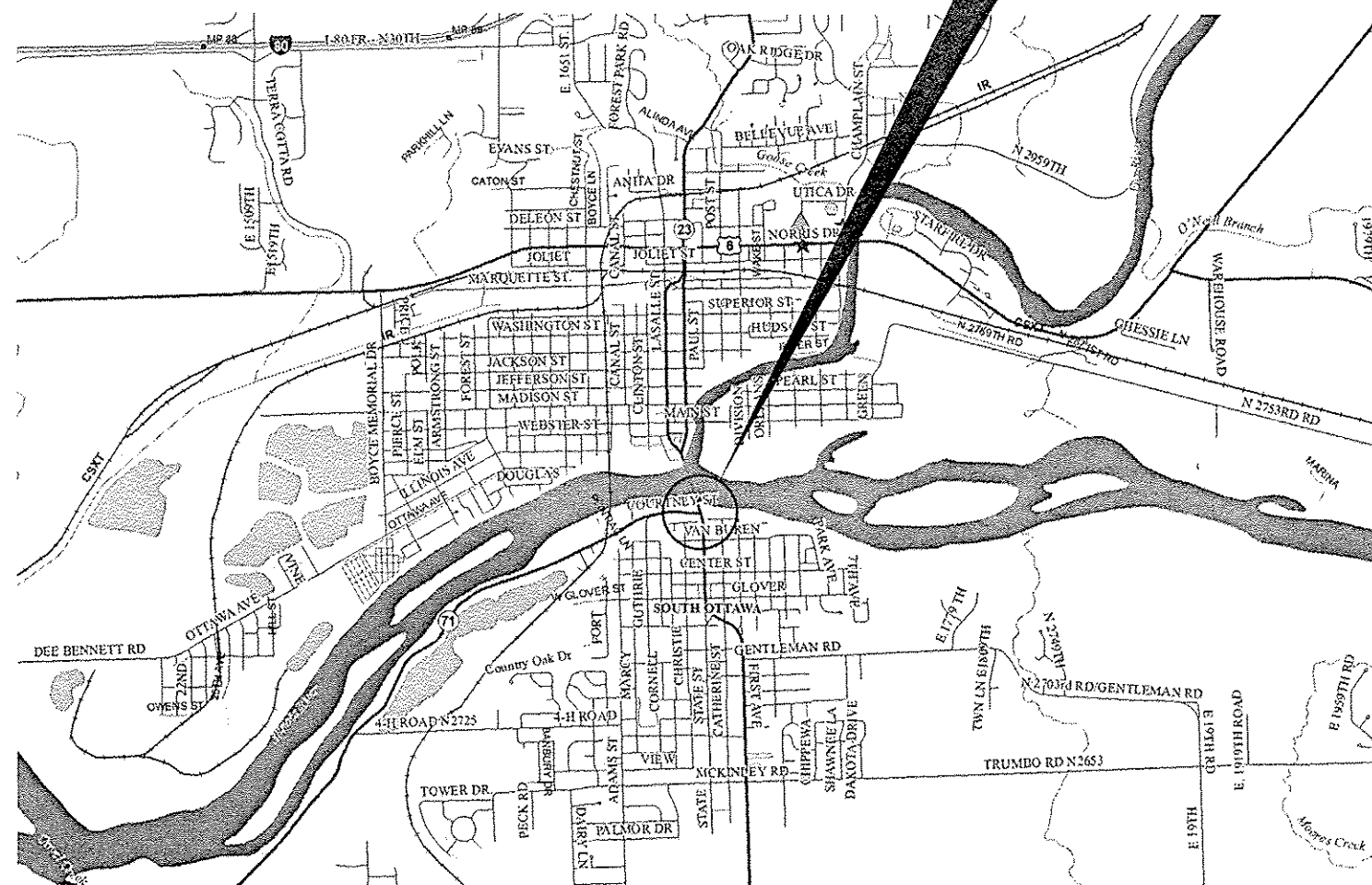
**F.A.P. 68 ROUTE (IL 23)
SECTION (1ZR)I-4
APPROACH SLAB RAISING
LASALLE COUNTY**

C-93-106-16

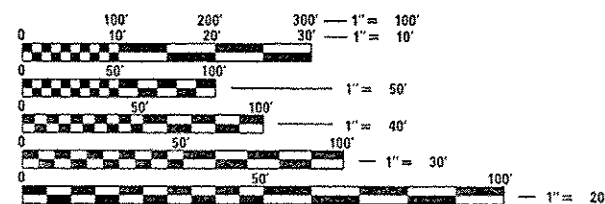
F.A.P. RTE.	SECTION	COUNTY	TOTAL SHEETS	SHEET NO.
68	(1ZR)I-4	LASALLE	9	1
		ILLINOIS	CONTRACT NO. 66F67	



PROJECT LOCATION
STRUCTURE NO 050-0180
F.A.P 68 (IL 23) OVER THE ILLINOIS RIVER
(SOUTH APPROACH ON SOUTHBOUND LANES)



POINT LOCATION



FULL SIZE PLANS HAVE BEEN PREPARED USING STANDARD ENGINEERING SCALES. REDUCED SIZED PLANS WILL NOT CONFORM TO STANDARD SCALES. IN MAKING MEASUREMENTS ON REDUCED PLANS, THE ABOVE SCALES MAY BE USED.

J.U.L.I.E.
JOINT UTILITY LOCATION INFORMATION FOR EXCAVATION
1-800-892-0123
OR 811

DISTRICT 3 NO. (815) 434-6131
PROJECT ENGINEER: JOE KANNEL P.E.
UNIT CHIEF: RON WOODSHANK
CONTRACT NO. 66F67

FUNCTIONAL CLASSIFICATION
OTHER PRINCIPAL ARTERIAL
2015 ADT 27300
P.V. 96.43%
S.U. 2.01%
M.U. 1.56%

STATE OF ILLINOIS
DEPARTMENT OF TRANSPORTATION

SUBMITTED 2-9 20 17
[Signature]
REGIONAL ENGINEER

Mar 24 20 17
[Signature]
ENGINEER OF DESIGN AND ENVIRONMENT

Mar 24 20 17
[Signature]
DIRECTOR OF PROGRAM DEVELOPMENT

**PRINTED BY THE AUTHORITY
OF THE STATE OF ILLINOIS**

GENERAL NOTES

FOR STABILIZATION, ALL TYPE III BARRICADES WILL REQUIRE A MINIMUM OF FOUR SAND BAGS PER BARRICADE.

ANY REFERENCE TO A STANDARD IN THESE PLANS SHALL BE INTERPRETED TO MEAN THE EDITION AS INDICATED BY THE SUBNUMBER SHOWN IN THE LIST OF STANDARDS OR THE COPY INCLUDED IN THESE PLANS.

THE CONTRACTOR'S ATTENTION IS DIRECTED TO THE PRESENCE OF DEPARTMENT-OWNED UNDERGROUND ELECTRICAL CABLE WITHIN THE LIMITS OF THE PROPOSED IMPROVEMENT. THE CONTRACTOR SHALL REQUEST THE ILLINOIS DEPARTMENT OF TRANSPORTATION IN OTTAWA (815-434-8417) TO LOCATE THE UNDERGROUND FACILITIES, PROVIDING A MINIMUM OF 72 HOURS NOTICE. THE DEPARTMENT IS NOT A MEMBER OF THE JOINT UTILITY LOCATING INFORMATION FOR EXCAVATORS (JULIE) SYSTEM.

ALL DAMAGE TO DEPARTMENT OWNED UNDERGROUND FACILITIES, CAUSED BY THE CONTRACTOR SHALL BE REPAIRED TO THE SATISFACTION OF THE DEPARTMENT AT THE CONTRACTOR'S EXPENSE. THIS SHALL INCLUDE ALL TEMPORARY REPAIRS REQUIRED TO KEEP THE FACILITY OPERATIONAL WHILE MATERIAL IS BEING OBTAINED TO MAKE PERMANENT REPAIRS. SPLICING OF ELECTRIC CABLE WILL NOT BE ALLOWED. ELECTRIC CABLE SHALL BE REPLACED FROM POLE TO POLE OR CONTROLLER.

THE CONTRACTOR SHALL CONTACT JULIE AT LEAST 48 HOURS PRIOR TO EXCAVATION TO DETERMINE WHICH UTILITIES ARE IN THE AREA.

AFTER PAVEMENT RAISING OPERATIONS HAVE BEEN COMPLETED, ALL FOREIGN MATERIALS, INCLUDING, HMA, GRAVELS, DEBRIS SHALL BE REMOVED AND DISPOSED OF ADJACENT TO PAVEMENT AREAS RAISED. COST SHALL BE INCLUDED IN THE CONSTRUCTION WORK INVOLVED.

COMMITMENTS

STATE OF ILLINOIS
DEPARTMENT OF TRANSPORTATION
DISTRICT THREE
AS BUILT INFORMATION

SUPERVISING CONSTRUCTION FIELD ENGINEER

RESIDENT ENGINEER / TECHNICIAN

START & END DATES
OF CONSTRUCTION:

INSPECTORS:

DATE: 2-9-17

PREPARED BY: Don Benoit
DISTRICT STUDIES & PLANS ENGINEER

EXAMINED BY: Joe Wick
DISTRICT CONSTRUCTION ENGINEER

Ray J. Palfrey
DISTRICT MATERIALS ENGINEER

Tom Supryal
DISTRICT OPERATIONS ENGINEER

STATE OF ILLINOIS
DEPARTMENT OF TRANSPORTATION

GENERAL NOTES

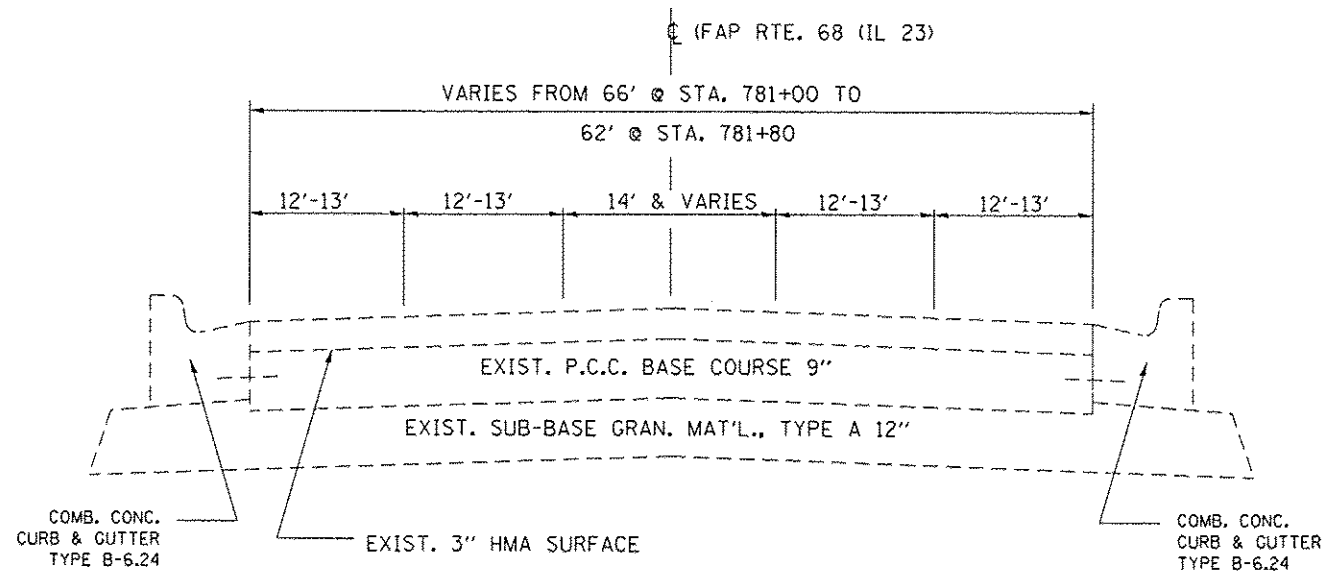
FILE NAME :	USER NAME : woodshankr1	DESIGNED - TP	REVISED -	STATE OF ILLINOIS DEPARTMENT OF TRANSPORTATION	GENERAL NOTES	F.A.P. RTE.	SECTION	COUNTY	TOTAL SHEETS	SHEET NO.	
ph:\IL084EDIDINTEC\Illinois.gov\PWIDOT\Documents\1007 Offices\District 3\Projects\036	DRAWN Data\640shankr\036667-datn1.dwg	CHECKED - RW	REVISED -			68	(IZR)-4	LASALLE	9	2	
Default	PLDT SCALE = 100.0000' / in.	DATE - 1/21/2017	REVISED -			SCALE: _____	SHEET 1	OF 1	SHEETS	STA. _____	TO STA. _____
	PLDT DATE = 2/9/2017										ILLINOIS FED. AID PROJECT

URBAN

CONSTR. CODE
CONT. MAINT. 100% STATE ✓
BRIDGE
0014 ✓
S.N. 050-0180

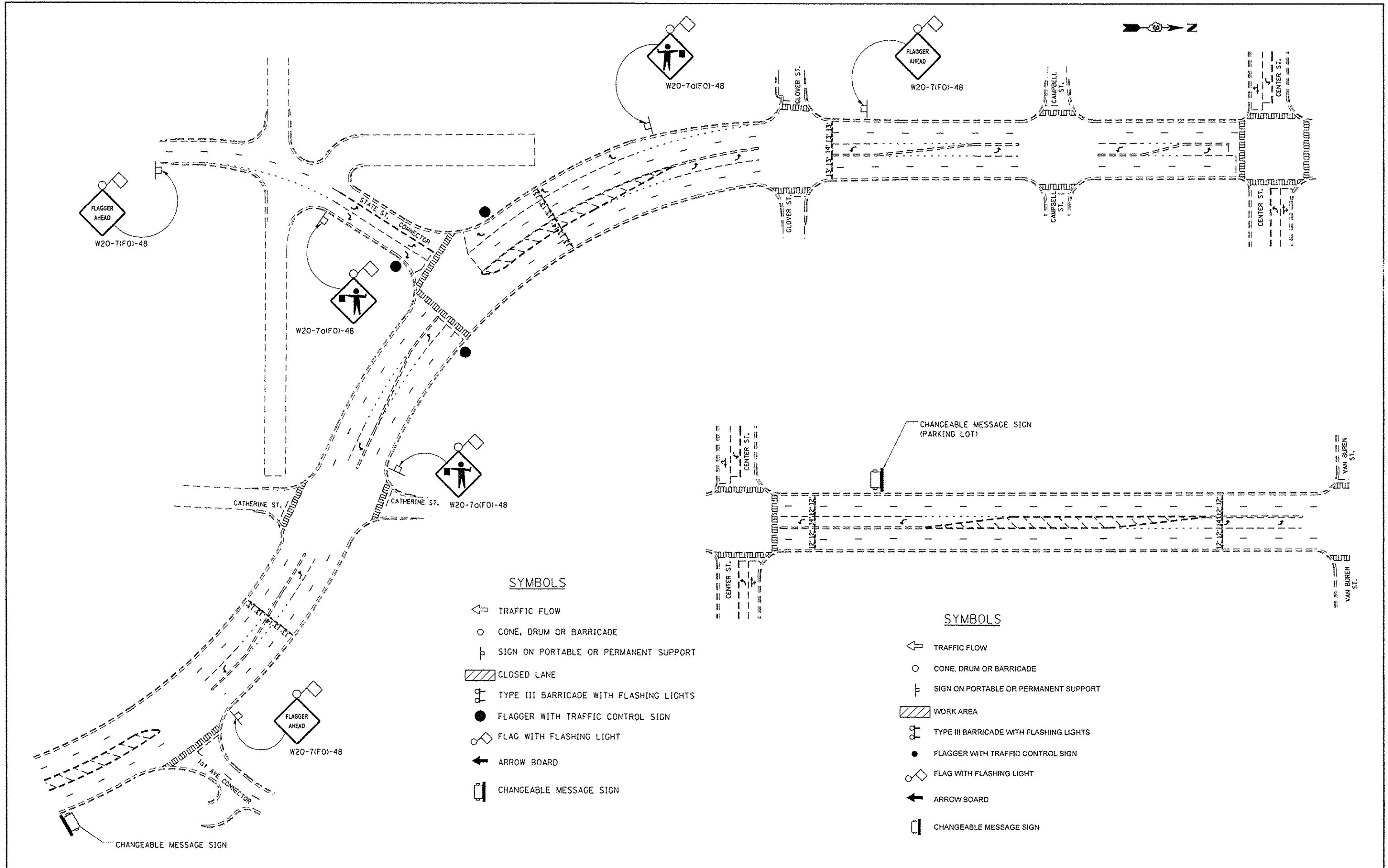
CODE NO.	ITEM	UNIT	TOTAL QUANTITY	
67100100	MOBILIZATION	LSUM	1	1
70102640	TRAFFIC CONTROL AND PROTECTION, STANDARD 701801	LSUM	1	1
70200100	NIGHTTIME WORK ZONE LIGHTING	LSUM	1	1
X0326223	FOAM, EXPANDING POLYURETHANE, HIGH-DENSITY	POUND	4700	4700
X7010216	TRAFFIC CONTROL AND PROTECTION, (SPECIAL)	LSUM	1	1
X7010228	TRAFFIC CONTROL AND PROTECTION, STANDARD 701601, SPECIAL	LSUM	1	1

REV



EXISTING TYPICAL SECTION - IL ROUTE 23
SOUTH OF RIVER
 STA. 793+00 TO 798+00

FILE NAME	USER NAME = woodshank	DESIGNED - TP	REVISED -	STATE OF ILLINOIS DEPARTMENT OF TRANSPORTATION	TYPICAL SECTION	F.A.P. RTE.	SECTION	COUNTY	TOTAL SHEETS	SHEET NO.
p:\IL\084EBID\TEG\Illinois.gov\PW\DOT\Documents\DOT Offices\District 3\Projects\03667\DRAWNData\GA0shank\036667-drawings	PLLOT SCALE = 100.0000 / 1 in.	CHECKED - RW	REVISED -			68	(12R)-4	LASALLE	9	4
Default	PLLOT DATE = 2/9/2017	DATE - 1/21/2017	REVISED -			SCALE: _____ SHEET 1 OF 1 SHEETS STA. _____ TO STA. _____		CONTRACT NO. 66F67 ILLINOIS FED. AID PROJECT		



SYMBOLS

- ← TRAFFIC FLOW
- CONE, DRUM OR BARRICADE
- ⊥ SIGN ON PORTABLE OR PERMANENT SUPPORT
- ▨ CLOSED LANE
- ⚡ TYPE III BARRICADE WITH FLASHING LIGHTS
- FLAGGER WITH TRAFFIC CONTROL SIGN
- ◇ FLAG WITH FLASHING LIGHT
- ← ARROW BOARD
- ☐ CHANGEABLE MESSAGE SIGN

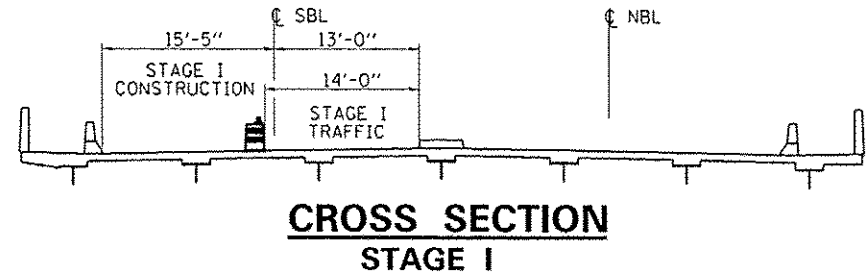
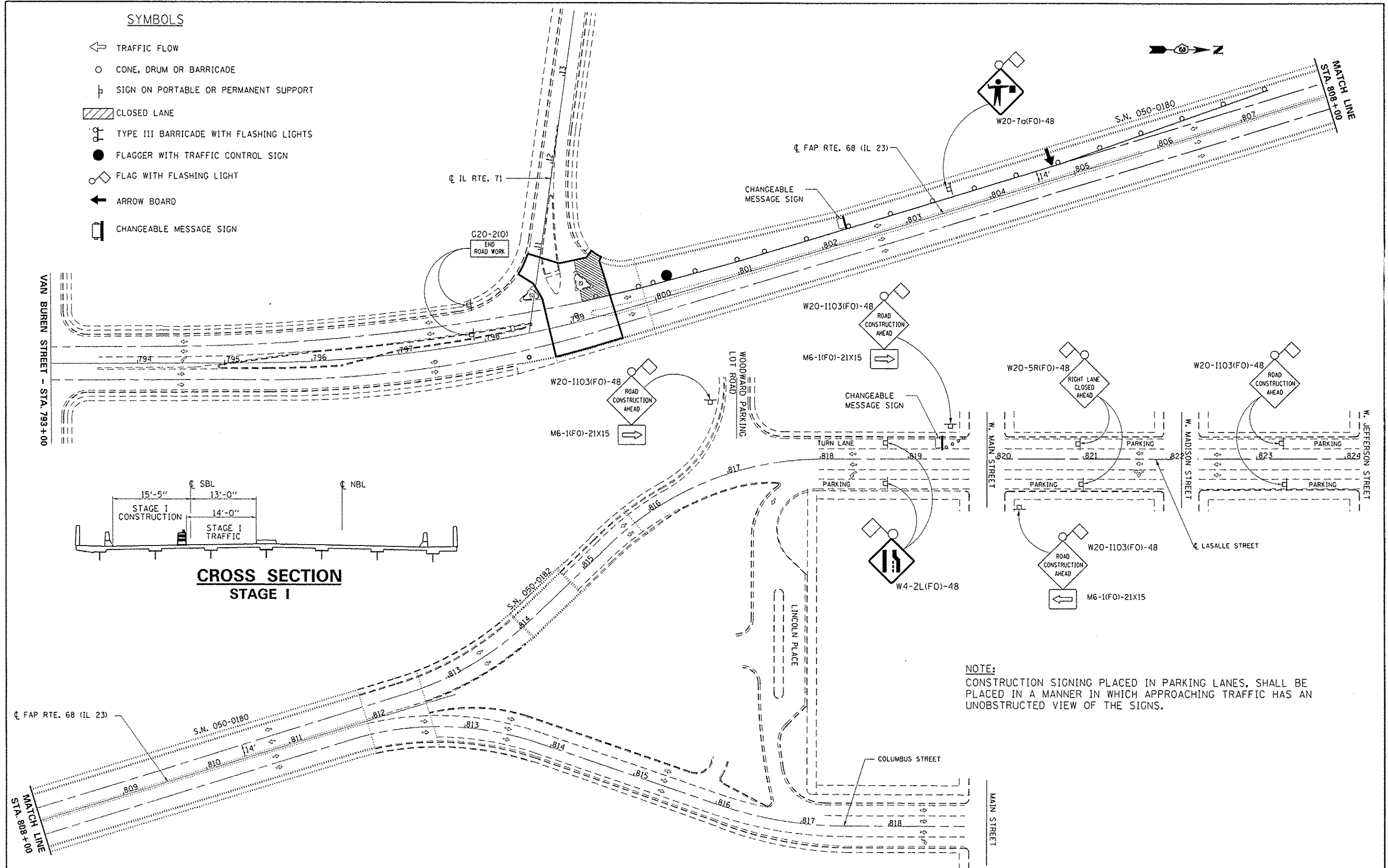
SYMBOLS

- ← TRAFFIC FLOW
- CONE, DRUM OR BARRICADE
- ⊥ SIGN ON PORTABLE OR PERMANENT SUPPORT
- ▨ WORK AREA
- ⚡ TYPE III BARRICADE WITH FLASHING LIGHTS
- FLAGGER WITH TRAFFIC CONTROL SIGN
- ◇ FLAG WITH FLASHING LIGHT
- ← ARROW BOARD
- ☐ CHANGEABLE MESSAGE SIGN

FILE NAME : p:\11084EBID\INTEG\Illinois.gov\PIDOT\Documents\DOT Offices\District 3\Projects\03666666\Drawings\03666666-Details.dwg Default	USER NAME : woodshenk1 DRAWN BY : GADshenk1 PLOT SCALE : 100.0000 / in. PLOT DATE : 2/10/2017	DESIGNED - TP CHECKED - RW DATE - 1/21/2017	REVISED - REVISED - REVISED - REVISED -	STATE OF ILLINOIS DEPARTMENT OF TRANSPORTATION	TRAFFIC CONTROL AND PROTECTION (SPECIAL)	F.A.P. RATE: 68	SECTION: (JZR)-4	COUNTY: LASALLE	TOTAL SHEETS: 9	SHEET NO.: 5
	SCALE: _____ SHEET 1 OF 1 SHEETS STA. _____ TO STA. _____						CONTRACT NO. 66F67 ILLINOIS FED. AID PROJECT			

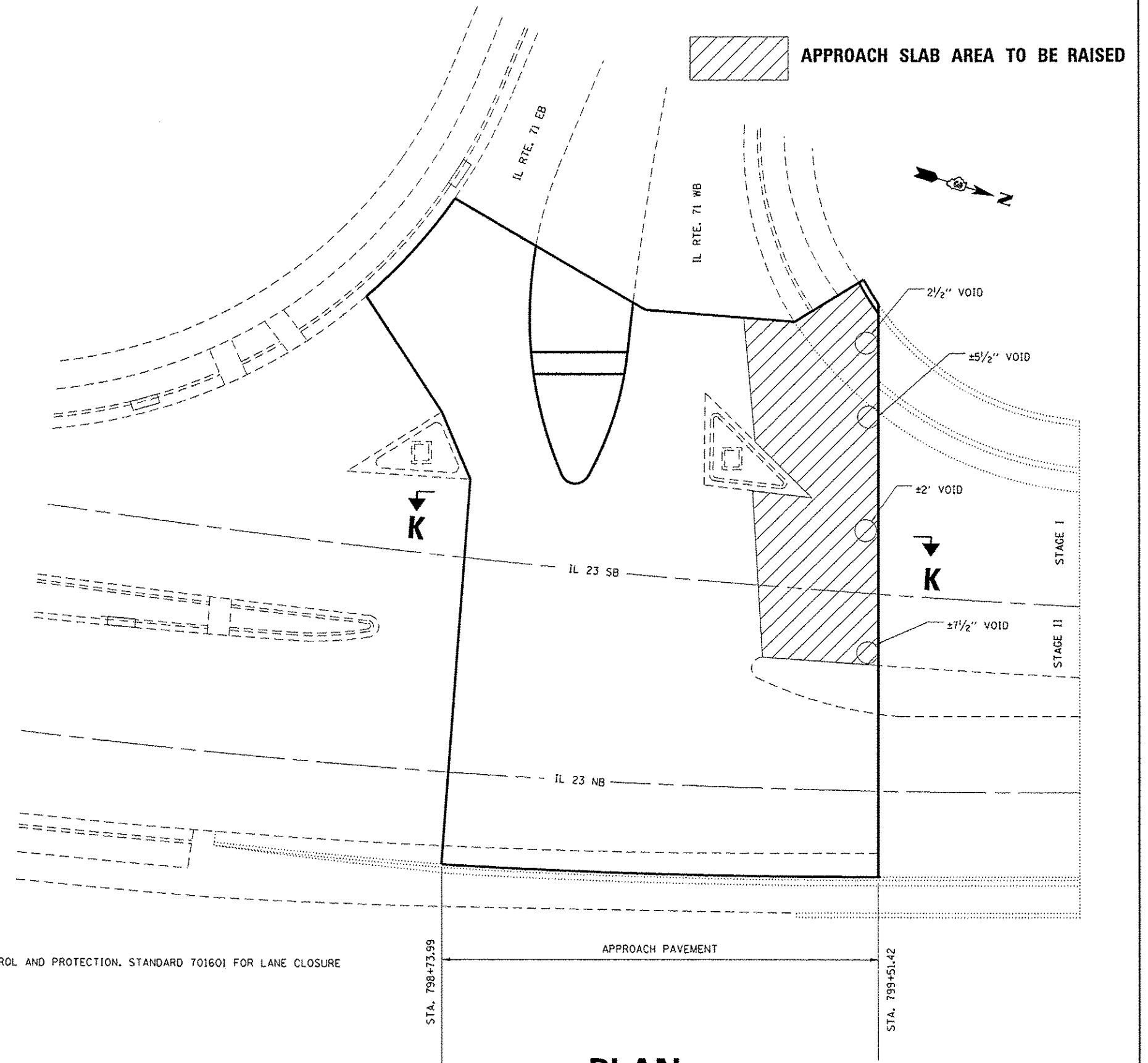
SYMBOLS

- ← TRAFFIC FLOW
- CONE, DRUM OR BARRICADE
- ⊥ SIGN ON PORTABLE OR PERMANENT SUPPORT
- ▨ CLOSED LANE
- ⊕ TYPE III BARRICADE WITH FLASHING LIGHTS
- FLAGGER WITH TRAFFIC CONTROL SIGN
- ◇ FLAG WITH FLASHING LIGHT
- ← ARROW BOARD
- ⊞ CHANGEABLE MESSAGE SIGN



NOTE:
CONSTRUCTION SIGNING PLACED IN PARKING LANES, SHALL BE PLACED IN A MANNER IN WHICH APPROACHING TRAFFIC HAS AN UNOBSTRUCTED VIEW OF THE SIGNS.

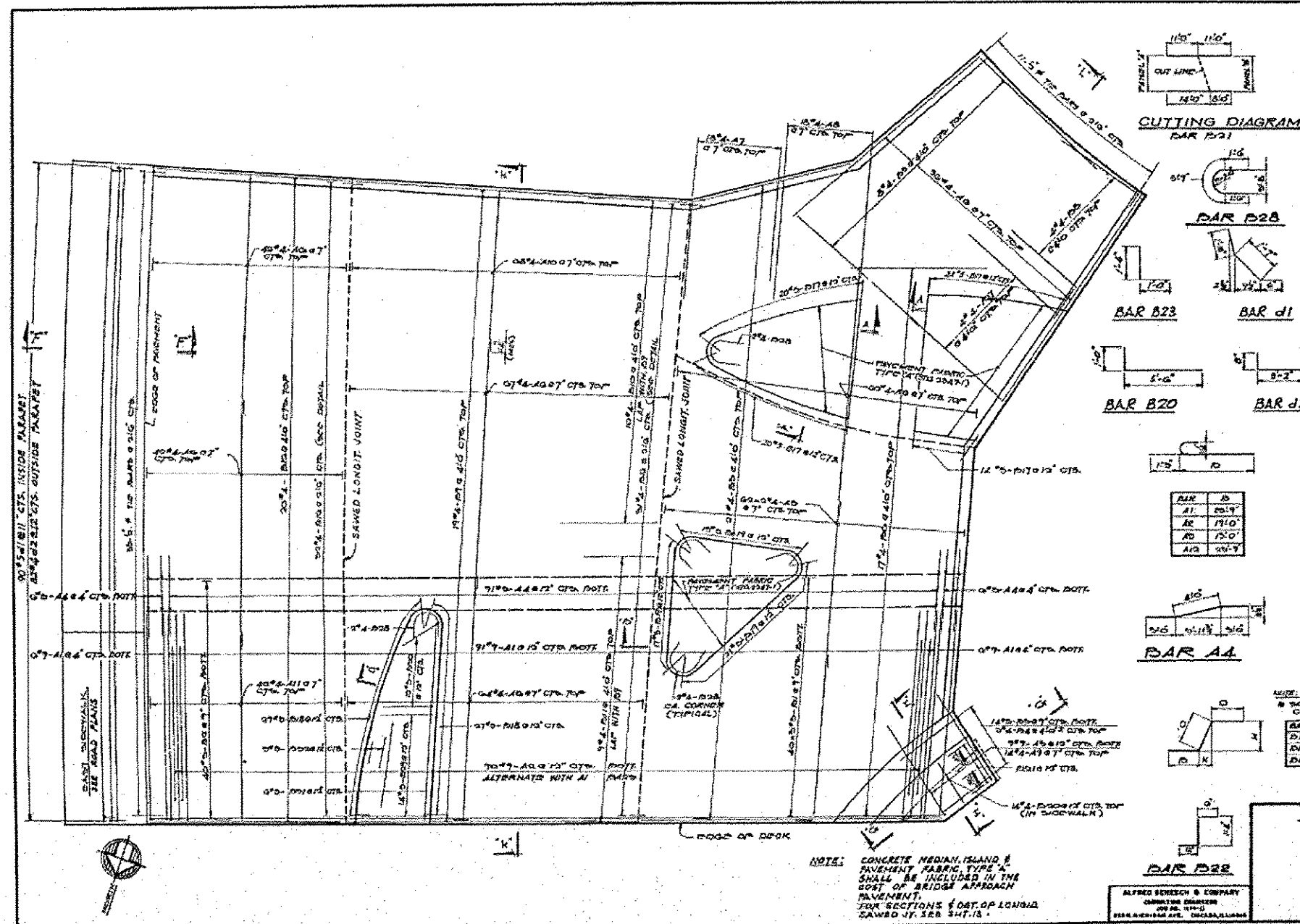
FILE NAME: p:\11084EBID\INTEC\Illinois.gov\FWIDOT\Documents\1007\Ofices\District 3\Projects\036\DRAWING\DATA\GAD\shar\0366F67\data1.dwg	USER NAME: woodshankr	DESIGNED - TP	REVISED -	STATE OF ILLINOIS DEPARTMENT OF TRANSPORTATION	TRAFFIC CONTROL AND PROTECTION, STANDARD 701601 (SPECIAL) STAGE I	F.A.P. RTE. 68	SECTION (12R)-4	COUNTY LASALLE	TOTAL SHEETS 9	SHEET NO. 6		
Default	PLOT SCALE 1/80,000	CHECKED - RW	REVISED -			SCALE: _____	SHEET 1 OF 1 SHEETS	STA. _____	TO STA. _____	ILLINOIS FED. AID PROJECT		
	PLOT DATE 2/10/2017	DATE 1/21/2017	REVISED -			CONTRACT NO. 66F67						



NOTE: SEE TRAFFIC CONTROL AND PROTECTION, STANDARD 701601 FOR LANE CLOSURE

PLAN
INTERSECTION IL 23 & IL 71

FILE NAME : p:\11084EBID\INTEG,illinois.gov\PWIDOT\Documents\DOT Offices\District 3\Projects\0366\Drawings\0366\0366P07-details.dwg	USER NAME : woodshankr1	DESIGNED - TP	REVISED -	STATE OF ILLINOIS DEPARTMENT OF TRANSPORTATION	PLAN OF SOUTH APPROACH SLAB				F.A.P. RTE. 68	SECTION (IZR)-4	COUNTY LASALLE	TOTAL SHEETS 9	SHEET NO. 8
PLOT SCALE = 100.0000' / 1" =	CHECKED - RW	DATE - 1/21/2017	REVISED -		SCALE: _____	SHEET 1	OF 1	SHEETS	STA. _____	TO STA. _____	CONTRACT NO. 66F67		
Default	PLOT DATE = 2/3/2017	DATE - 1/21/2017	REVISED -		ILLINOIS FED. AID PROJECT								



BILL OF MATERIAL

BAR No.	SIZE	LENGTH	QUANTITY
A1	10.0	47.0	17.0
A2	9.0	49.0	18.0
A3	8.0	51.0	19.0
A4	7.0	53.0	20.0
A5	6.0	55.0	21.0
A6	5.0	57.0	22.0
A7	4.0	59.0	23.0
A8	3.0	61.0	24.0
A9	2.0	63.0	25.0
A10	1.0	65.0	26.0
A11	1.0	67.0	27.0
A12	1.0	69.0	28.0
A13	1.0	71.0	29.0
A14	1.0	73.0	30.0
A15	1.0	75.0	31.0
A16	1.0	77.0	32.0
A17	1.0	79.0	33.0
A18	1.0	81.0	34.0
A19	1.0	83.0	35.0
A20	1.0	85.0	36.0
A21	1.0	87.0	37.0
A22	1.0	89.0	38.0
A23	1.0	91.0	39.0
A24	1.0	93.0	40.0
A25	1.0	95.0	41.0
A26	1.0	97.0	42.0
A27	1.0	99.0	43.0
A28	1.0	101.0	44.0
A29	1.0	103.0	45.0
A30	1.0	105.0	46.0
A31	1.0	107.0	47.0
A32	1.0	109.0	48.0
A33	1.0	111.0	49.0
A34	1.0	113.0	50.0
A35	1.0	115.0	51.0
A36	1.0	117.0	52.0
A37	1.0	119.0	53.0
A38	1.0	121.0	54.0
A39	1.0	123.0	55.0
A40	1.0	125.0	56.0
A41	1.0	127.0	57.0
A42	1.0	129.0	58.0
A43	1.0	131.0	59.0
A44	1.0	133.0	60.0
A45	1.0	135.0	61.0
A46	1.0	137.0	62.0
A47	1.0	139.0	63.0
A48	1.0	141.0	64.0
A49	1.0	143.0	65.0
A50	1.0	145.0	66.0
A51	1.0	147.0	67.0
A52	1.0	149.0	68.0
A53	1.0	151.0	69.0
A54	1.0	153.0	70.0
A55	1.0	155.0	71.0
A56	1.0	157.0	72.0
A57	1.0	159.0	73.0
A58	1.0	161.0	74.0
A59	1.0	163.0	75.0
A60	1.0	165.0	76.0
A61	1.0	167.0	77.0
A62	1.0	169.0	78.0
A63	1.0	171.0	79.0
A64	1.0	173.0	80.0
A65	1.0	175.0	81.0
A66	1.0	177.0	82.0
A67	1.0	179.0	83.0
A68	1.0	181.0	84.0
A69	1.0	183.0	85.0
A70	1.0	185.0	86.0
A71	1.0	187.0	87.0
A72	1.0	189.0	88.0
A73	1.0	191.0	89.0
A74	1.0	193.0	90.0
A75	1.0	195.0	91.0
A76	1.0	197.0	92.0
A77	1.0	199.0	93.0
A78	1.0	201.0	94.0
A79	1.0	203.0	95.0
A80	1.0	205.0	96.0
A81	1.0	207.0	97.0
A82	1.0	209.0	98.0
A83	1.0	211.0	99.0
A84	1.0	213.0	100.0
A85	1.0	215.0	101.0
A86	1.0	217.0	102.0
A87	1.0	219.0	103.0
A88	1.0	221.0	104.0
A89	1.0	223.0	105.0
A90	1.0	225.0	106.0
A91	1.0	227.0	107.0
A92	1.0	229.0	108.0
A93	1.0	231.0	109.0
A94	1.0	233.0	110.0
A95	1.0	235.0	111.0
A96	1.0	237.0	112.0
A97	1.0	239.0	113.0
A98	1.0	241.0	114.0
A99	1.0	243.0	115.0
A100	1.0	245.0	116.0
A101	1.0	247.0	117.0
A102	1.0	249.0	118.0
A103	1.0	251.0	119.0
A104	1.0	253.0	120.0
A105	1.0	255.0	121.0
A106	1.0	257.0	122.0
A107	1.0	259.0	123.0
A108	1.0	261.0	124.0
A109	1.0	263.0	125.0
A110	1.0	265.0	126.0
A111	1.0	267.0	127.0
A112	1.0	269.0	128.0
A113	1.0	271.0	129.0
A114	1.0	273.0	130.0
A115	1.0	275.0	131.0
A116	1.0	277.0	132.0
A117	1.0	279.0	133.0
A118	1.0	281.0	134.0
A119	1.0	283.0	135.0
A120	1.0	285.0	136.0
A121	1.0	287.0	137.0
A122	1.0	289.0	138.0
A123	1.0	291.0	139.0
A124	1.0	293.0	140.0
A125	1.0	295.0	141.0
A126	1.0	297.0	142.0
A127	1.0	299.0	143.0
A128	1.0	301.0	144.0
A129	1.0	303.0	145.0
A130	1.0	305.0	146.0
A131	1.0	307.0	147.0
A132	1.0	309.0	148.0
A133	1.0	311.0	149.0
A134	1.0	313.0	150.0
A135	1.0	315.0	151.0
A136	1.0	317.0	152.0
A137	1.0	319.0	153.0
A138	1.0	321.0	154.0
A139	1.0	323.0	155.0
A140	1.0	325.0	156.0
A141	1.0	327.0	157.0
A142	1.0	329.0	158.0
A143	1.0	331.0	159.0
A144	1.0	333.0	160.0
A145	1.0	335.0	161.0
A146	1.0	337.0	162.0
A147	1.0	339.0	163.0
A148	1.0	341.0	164.0
A149	1.0	343.0	165.0
A150	1.0	345.0	166.0
A151	1.0	347.0	167.0
A152	1.0	349.0	168.0
A153	1.0	351.0	169.0
A154	1.0	353.0	170.0
A155	1.0	355.0	171.0
A156	1.0	357.0	172.0
A157	1.0	359.0	173.0
A158	1.0	361.0	174.0
A159	1.0	363.0	175.0
A160	1.0	365.0	176.0
A161	1.0	367.0	177.0
A162	1.0	369.0	178.0
A163	1.0	371.0	179.0
A164	1.0	373.0	180.0
A165	1.0	375.0	181.0
A166	1.0	377.0	182.0
A167	1.0	379.0	183.0
A168	1.0	381.0	184.0
A169	1.0	383.0	185.0
A170	1.0	385.0	186.0
A171	1.0	387.0	187.0
A172	1.0	389.0	188.0
A173	1.0	391.0	189.0
A174	1.0	393.0	190.0
A175	1.0	395.0	191.0
A176	1.0	397.0	192.0
A177	1.0	399.0	193.0
A178	1.0	401.0	194.0
A179	1.0	403.0	195.0
A180	1.0	405.0	196.0
A181	1.0	407.0	197.0
A182	1.0	409.0	198.0
A183	1.0	411.0	199.0
A184	1.0	413.0	200.0
A185	1.0	415.0	201.0
A186	1.0	417.0	202.0
A187	1.0	419.0	203.0
A188	1.0	421.0	204.0
A189	1.0	423.0	205.0
A190	1.0	425.0	206.0
A191	1.0	427.0	207.0
A192	1.0	429.0	208.0
A193	1.0	431.0	209.0
A194	1.0	433.0	210.0
A195	1.0	435.0	211.0
A196	1.0	437.0	212.0
A197	1.0	439.0	213.0
A198	1.0	441.0	214.0
A199	1.0	443.0	215.0
A200	1.0	445.0	216.0
A201	1.0	447.0	217.0
A202	1.0	449.0	218.0
A203	1.0	451.0	219.0
A204	1.0	453.0	220.0
A205	1.0	455.0	221.0
A206	1.0	457.0	222.0
A207	1.0	459.0	223.0
A208	1.0	461.0	224.0
A209	1.0	463.0	225.0
A210	1.0	465.0	226.0
A211	1.0	467.0	227.0
A212	1.0	469.0	228.0
A213	1.0	471.0	229.0
A214	1.0	473.0	230.0
A215	1.0	475.0	231.0
A216	1.0	477.0	232.0
A217	1.0	479.0	233.0
A218	1.0	481.0	234.0
A219	1.0	483.0	235.0
A220	1.0	485.0	236.0
A221	1.0	487.0	237.0
A222	1.0	489.0	238.0
A223	1.0	491.0	239.0
A224	1.0	493.0	240.0
A225	1.0	495.0	241.0
A226	1.0	497.0	242.0
A227	1.0	499.0	243.0
A228	1.0	501.0	244.0
A229	1.0	503.0	245.0
A230	1.0	505.0	246.0
A231	1.0	507.0	247.0
A232	1.0	509.0	248.0
A233	1.0	511.0	249.0
A234	1.0	513.0	250.0
A235	1.0	515.0	251.0
A236	1.0	517.0	252.0
A237	1.0	519.0	253.0
A238	1.0	521.0	254.0
A239	1.0	523.0	255.0
A240	1.0	525.0	256.0
A241	1.0	527.0	257.0
A242	1.0	529.0	258.0
A243	1.0	531.0	259.0
A244	1.0	533.0	260.0
A245	1.0	535.0	261.0
A246	1.0	537.0	262.0
A247	1.0	539.0	263.0
A248	1.0	541.0	264.0
A249	1.0	543.0	265.0
A250	1.0	545.0	266.0
A251	1.0	547.0	267.0
A252	1.0	549.0	268.0
A253	1.0	551.0	269.0
A254	1.0	553.0	270.0
A255	1.0	555.0	271.0
A256	1.0	557.0	272.0
A257	1.0	559.0	273.0
A258	1.0	561.0	274.0
A259	1.0	563.0	275.0
A260	1.0	565.0	276.0
A261	1.0	567.0	277.0
A262	1.0	569.0	278.0
A263	1.0	571.0	279.0
A264	1.0	573.0	280.0
A265	1.0	575.0	281.0
A266	1.0	577.0	282.0
A267	1.0	579.0	283.0
A268	1.0	581.0	284.0
A269	1.0	583.0	285.0
A270	1.0	585.0	286.0
A271	1.0	587.0	287.0
A272	1.0	589.0	288.0
A273	1.0	591.0	289.0
A274	1.0	593.0	290.0
A275	1.0	595.0	291.0
A276	1.0	597.0	292.0
A277	1.0	599.0	293.0
A278	1.0	601.0	294.0
A279	1.0	603.0	295.0
A280	1.0	605.0	296.0
A281	1.0	607.0	297.0
A282	1.0	609.0	298.0
A283	1.0	611.0	299.0
A284	1.0	613.0	300.0
A285	1.0	615.0	301.0
A286	1.0	617.0	302.0
A287	1.0	619.0	303.0
A288	1.0	621.0	304.0
A289	1.0	623.0	305.