

STATE OF ILLINOIS
DEPARTMENT OF TRANSPORTATION

F.A. RTE.	SECTION	COUNTY	TOTAL SHEETS	SHEET NO.
*	D4 ITS SYSTEM 2023-2	PEORIA	23	1
		ILLINOIS	CONTRACT NO. 68H57	

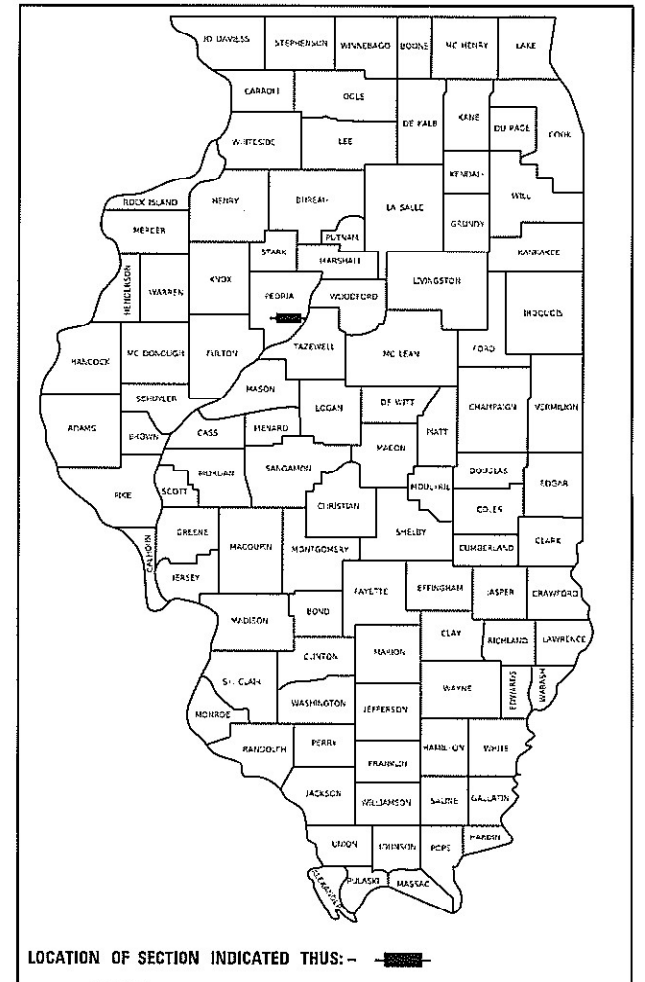
* FAP 317A/
FAU 6675

D-94-034-23

INDEX OF SHEETS:
SEE SHEET 2 FOR INDEX OF SHEETS

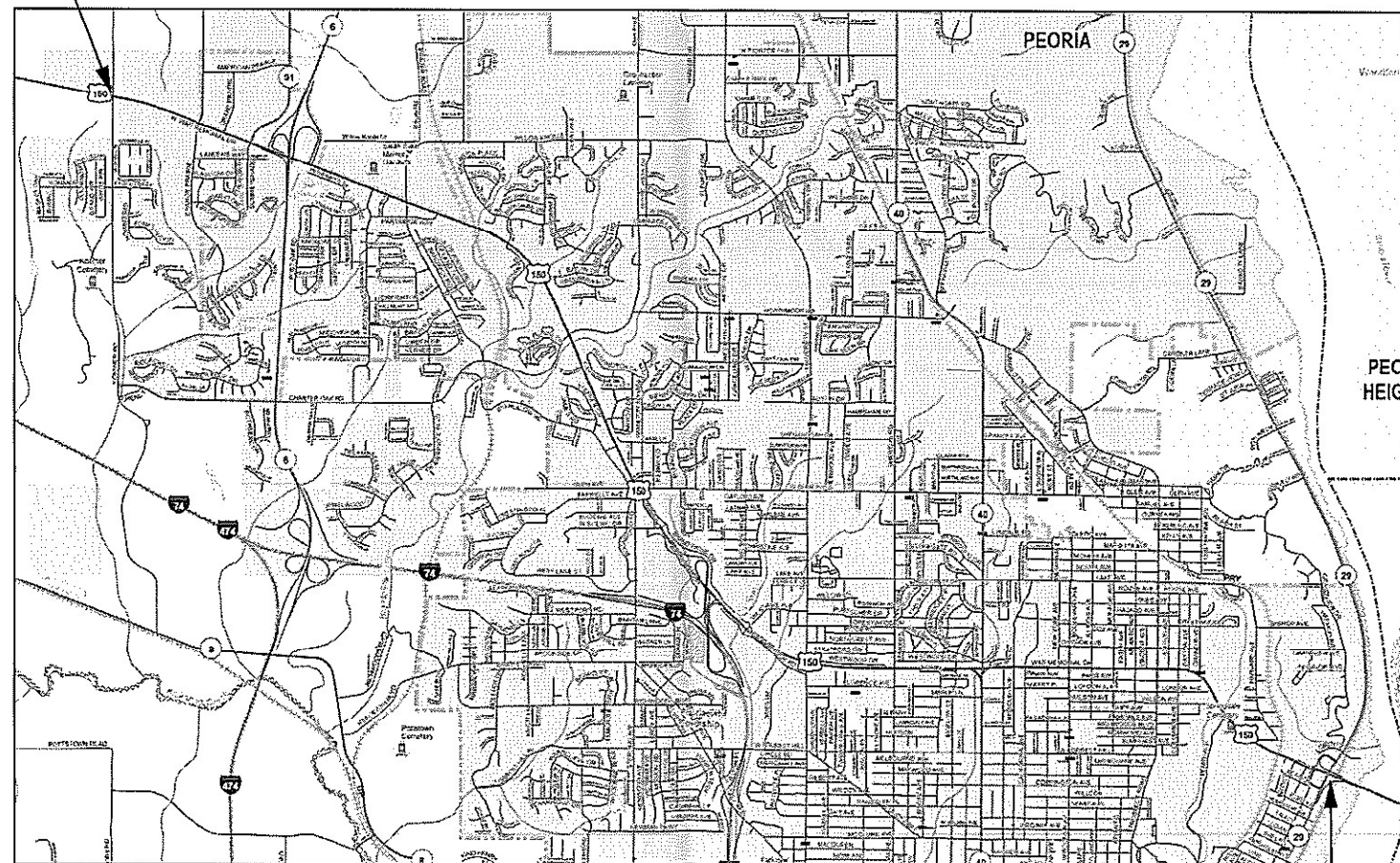
PROPOSED
HIGHWAY PLANS

ROUTE FAP 317A / FAU 6675 (US 150)
D4 ITS SYSTEM 2023-2
PEORIA COUNTY



C-94-040-23

PROJECT START
(US 150 & KOERNER/
TRIGGER RD.)



HIGHWAY STANDARDS:
SEE SHEET 2 FOR A LIST OF
APPLICABLE HIGHWAY STANDARDS

PROJECT DESCRIPTION:
INSTALLATION OF FIBER OPTIC
CABLE WITHIN EXISTING CONDUIT
ALONG US 150 (WAR MEMORIAL DR.)
FROM IL 29 INTERCHANGE TO
KOERNER/TRIGGER RD. IN PEORIA

J.U.L.I.E.
JOINT UTILITY LOCATION INFORMATION FOR EXCAVATORS
1-800-892-0123
OR 811

PROJECT ENGINEER : TREVOR HANSON (309) 671-4474
PROJECT MANAGER : ERIC HOWALD (309) 671-4481
CATALOG NO. 036383-00D
CONTRACT NO. 68H57

PROJECT END
(US 150 & IL 29
INTERCHANGE)

STATE OF ILLINOIS
DEPARTMENT OF TRANSPORTATION

SUBMITTED February 9th 20 23
Kensil A. Barnett
REGIONAL ENGINEER

March 24, 2023
S. E. A. EKS
ENGINEER OF DESIGN AND ENVIRONMENT

March 24, 2023
Stephen M. Smith
DIRECTOR OF HIGHWAYS PROJECT IMPLEMENTATION

PRINTED BY THE AUTHORITY
OF THE STATE OF ILLINOIS

NO COMMITMENTS HAVE BEEN MADE IN CONJUNCTION WITH THIS PROJECT.

INDEX OF SHEETS	
SHEET	DESCRIPTION
1	COVER SHEET
2	COMMITMENTS, INDEX OF SHEETS, HIGHWAY STANDARDS
3	FIBER OPTIC CABLE SLACK REQUIREMENTS AND LEGEND
4	CONSTRUCTION NOTES
5	SUMMARY OF QUANTITIES
6	SCHEDULE OF QUANTITIES
7	PROPOSED FIBER OPTIC INSTALLATION ALONG US 150 FROM KOERNER RD./ TRIGGER RD. TO GRAND PRAIRIE DR. - PEORIA
8	PROPOSED FIBER OPTIC INSTALLATION ALONG US 150 FROM IL 91/ SUMMERSHADE CIR. TO CHESHIRE DR. - PEORIA
9	PROPOSED FIBER OPTIC INSTALLATION ALONG US 150 FROM FROSTWOOD PKWY. TO BARING TRACE/ WILLOW KNOLLS CT. - PEORIA
10	PROPOSED FIBER OPTIC INSTALLATION ALONG US 150 FROM MOUNTELLO DR./ JAMESTOWN RD. TO BACON DR. - PEORIA
11	PROPOSED FIBER OPTIC INSTALLATION ALONG US 150 FROM ALLEN RD./ CHARTER OAK RD. TO SHERWOOD PL. - PEORIA
12	PROPOSED FIBER OPTIC INSTALLATION ALONG US 150 FROM GLEN HOLLOW TO SCENIC DR./ BRANDYWINE DR. - PEORIA
13	PROPOSED FIBER OPTIC INSTALLATION ALONG US 150 FROM I-74 WB OFF RAMP TO I-74 EB ON RAMP - PEORIA
14	PROPOSED FIBER OPTIC INSTALLATION ALONG US 150 FROM I-74 EB ON RAMP TO BRANDYWINE DR./ MEADOWBROOK RD. - PEORIA
15	PROPOSED FIBER OPTIC INSTALLATION ALONG US 150 FROM BRANDYWINE DR./ MEADOWBROOK RD. TO UNIVERSITY ST. - PEORIA
16	PROPOSED FIBER OPTIC INSTALLATION ALONG US 150 FROM SHERIDAN RD. TO NEW YORK AVE. - PEORIA
17	PROPOSED FIBER OPTIC INSTALLATION ALONG US 150 FROM WISCONSIN AVE./ BOULEVARD AVE. TO GRAND BLVD. - PEORIA
18	PROPOSED FIBER OPTIC INSTALLATION ALONG US 150 BETWEEN GRAND BLVD. AND HARVARD AVE./ RUPPMAN PLAZA - PEORIA
19	PROPOSED FIBER OPTIC INSTALLATION ALONG US 150 EAST OF HARVARD AVE./ RUPPMAN PLAZA - PEORIA
20	PROPOSED FIBER OPTIC INSTALLATION ALONG US 150 AT IL 29 INTERCHANGE - PEORIA
21-22	FIBER OPTIC TERMINATION DIAGRAM
23	FIBER OPTIC TERMINATION NOTES

HIGHWAY STANDARDS	
000001-08	STANDARD SYMBOLS, ABBREVIATIONS AND PATTERNS
001006	DECIMAL OF AN INCH & FOOT
701001-02	OFF-ROAD OPERATIONS, 2L, 2W, MORE THAN 15' AWAY
701006-05	OFF-ROAD OPERATIONS, 2L, 2W, 15' TO 24" FROM PAVEMENT EDGE
701101-05	OFF-ROAD OPERATIONS, MULTILANE, 15' TO 24" FROM PAVEMENT EDGE
701106-02	OFF-ROAD OPERATIONS, MULTILANE, MORE THAN 15' AWAY
701421-08	LANE CLOSURE, MULTILANE, DAY OPERATIONS ONLY, FOR SPEEDS ≥ 45 MPH TO 55 MPH
701601-09	URBAN LANE CLOSURE, MULTILANE, 1W OR 2W WITH NONTRAVERSABLE MEDIAN
701701-10	URBAN LANE CLOSURE, MULTILANE INTERSECTION
701801-06	SIDEWALK, CORNER OR CROSSWALK CLOSURE
701901-08	TRAFFIC CONTROL DEVICES
814006-03	DOUBLE HANDHOLES

MODEL Path: S:\CEN\WV\ORD\ESP\AN\Hanson# 68H57 War Memorial Fiber Project\68H57 US 150 Fiber (2-2-23).dgn

USER NAME = Trevor.Hanson	DESIGNED -	REVISED -
	DRAWN -	REVISED -
PLOT SCALE = 1/16" = 1/32" / in.	CHECKED -	REVISED -
PLOT DATE = 2/8/2023	DATE -	REVISED -

**STATE OF ILLINOIS
DEPARTMENT OF TRANSPORTATION**





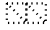
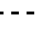
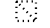

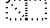

**COMMITMENTS, INDEX OF SHEETS, HIGHWAY STANDARDS, &
TRAFFIC SIGNAL CONSTRUCTION STAGING NOTES**

SCALE: SHEET OF SHEETS STA. TO STA.

F.A. RTE. SECTION COUNTY TOTAL SHEETS SHEET NO.
* D4 ITS SYSTEM 2023-2 PEORIA 23 2

F.A. RTE.	SECTION	COUNTY	TOTAL SHEETS	SHEET NO.
*	D4 ITS SYSTEM 2023-2	PEORIA	23	2
CONTRACT NO. 68H57				
ILLINOIS FED. AID PROJECT				

SLACK CABLE REQUIREMENTS:
 CONTROL CABINET & FOUNDATION = 10.0 FT.
 JUNCTION BOX = 10.0 FT.
 SINGLE HANDHOLE = 30.0 FT.
 DOUBLE HANDHOLE = 100.0 FT.
 DOUBLE HANDHOLE WITH LATERAL SPLICE = 200.0 FT.
 COMMUNICATIONS VAULT = 200.0 FT.

LEGEND			
	EXISTING TRAFFIC SIGNAL CABINET		EXISTING JUNCTION BOX
	EXISTING 334 (ITS) CABINET		EXISTING CONDUIT
	EXISTING DOUBLE HANDHOLE		PROPOSED FIBER OPTIC CABLE IN EXISTING CONDUIT
	EXISTING HANDHOLE		PROPOSED FIBER OPTIC CABLE IN PROPOSED CONDUIT
	EXISTING COMMUNICATIONS VAULT		PROPOSED DOUBLE HANDHOLE

MODEL: D:\p\h\h
 FILE NAME: S:\CEN\W\W\ORD\ESP\AN\Hanson.# 68H57 War Memorial Fiber Project\68H57_US_150_Fiber (2-2-23).dgn

USER NAME = Trevor.Hanson	DESIGNED -	REVISED -
	DRAWN -	REVISED -
PLOT SCALE = 151.0849 ' / in.	CHECKED -	REVISED -
PLOT DATE = 2/8/2023	DATE -	REVISED -

STATE OF ILLINOIS
DEPARTMENT OF TRANSPORTATION

FIBER OPTIC CABLE SLACK REQUIREMENTS
AND LEGEND

SCALE: SHEET OF SHEETS STA. TO STA.

F.A. RTE.	SECTION	COUNTY	TOTAL SHEETS	SHEET NO.
*	D4 ITS SYSTEM 2023-2	PEORIA	23	3
CONTRACT NO. 68H57			ILLINOIS FED. AID PROJECT	

FAP 317A
FAU 6675

CONSTRUCTION NOTES

1.	THE LOCATION OF ALL UTILITIES AND PRIVATELY OWNED FACILITIES SHALL BE FIELD VERIFIED BY THE CONTRACTOR PRIOR TO THE INSTALLATION OF ANY COMPONENTS.
2.	THE CONTRACTOR SHALL BE RESPONSIBLE FOR LOCATING EXISTING IDOT ELECTRICAL FACILITIES AT HIS/HER OWN EXPENSE IF REQUIRED. THE CONTRACTOR SHALL ALSO BE LIABLE FOR ANY DAMAGE TO IDOT FACILITIES RESULTING FROM INACCURATE LOCATING.
3.	ELECTRICAL WORK SHALL CONFORM WITH NATIONAL, STATE, AND LOCAL CODES.
4.	THE LOCATIONS FOR HANDHOLES AND COMMUNICATION VAULTS ARE PROVIDED FOR REFERENCE ONLY. THE ENGINEER OF TRAFFIC SHALL BE NOTIFIED FOR LOCATION VERIFICATION BEFORE INSTALLATION.
5.	THE EXISTING TRAFFIC SIGNALS SHALL REMAIN IN OPERATION DURING THE INSTALLATION OF THE PROPOSED FIBER OPTIC CABLE, CONDUITS, COMMUNICATIONS VAULTS AND HANDHOLES.
6.	THE CONTRACTOR SHALL PROVIDE ELECTRICAL CABLE SLACK IN ACCORDANCE WITH ARTICLE 873.03.
7.	ELECTRICAL CABLE WILL BE MEASURED FOR PAYMENT IN ACCORDANCE WITH ARTICLE 873.04.
8.	THE CONTRACTOR SHALL VERIFY FIELD CONDITIONS PRIOR TO BIDDING. THERE WILL BE NO ADDITIONAL COMPENSATION PAID FOR CLAIMS THAT ARISE FROM A FAILURE TO FULLY INVESTIGATE EXISTING FIELD CONDITIONS.
9.	THE HANDHOLES AND COMMUNICATION VAULTS SHALL BE CONSTRUCTED SO THAT THE TOP OF THE FRAME WILL BE FLUSH WITH THE SURFACE OF THE SIDEWALK, SHOULDER OR GROUND LINE.
10.	ALL SURPLUS MATERIALS SHALL BE DISPOSED OF IN ACCORDANCE WITH ARTICLE 202.03 OF THE STANDARD SPECIFICATIONS.
11.	SDR 13.5 HDPE COILABLE DUCT MAY BE USED IN PLACE OF SCHEDULE 40 PVC CONDUIT.
12.	NO ADDITIONAL COMPENSATION WILL BE ALLOWED FOR PLACING CONDUIT AT GREATER THAN 2 FT. MINIMUM DEPTH TO AVOID OBSTACLES SUCH AS UNDERGROUND UTILITIES.
13.	THE CONTRACTOR IS RESPONSIBLE FOR THE COST OF UNCOVERING OR HAND DIGGING AROUND UTILITIES AS NECESSARY. THIS COST OF THIS WORK SHALL BE INCLUDED IN THE UNIT PRICES FOR THE CONDUITS.
14.	FIBER OPTIC CABLE SHALL BE SPLICE TO CREATE A CONTINUOUS LINK ALONG US 150 (WAR MEMORIAL DR.) ALL FIBERS WITHIN THE CABLE SHALL BE FUSION SPLICED AND ALL SPLICES SHALL BE PROTECTED BY A WEATHERPROOF SPLICE ENCLOSURE. SPLICES SHALL BE MADE ONLY IN COMMUNICATION VAULTS OR DOUBLE HANDHOLES.
15.	THE CONTRACTOR SHALL FURNISH AND INSTALL A #12 (XLP-TYPE USE OR THHN) TRACER WIRE ALONG WITH THE FIBER OPTIC CABLE FOR LOCATING PURPOSES. THE TRACER WIRE SHALL BE CONTINUOUS AND BE ACCESSIBLE FROM THE COMMUNICATIONS VAULTS, HANDHOLES, TRAFFIC SIGNAL CABINETS, AND ITS CABINETS. THE COST OF THIS WORK SHALL BE INCLUDED IN THE BID PRICE FOR THE PAY ITEM "FIBER OPTIC CABLE IN CONDUIT, 96 FIBERS, SINGLE MODE."
16.	THE CONTRACTOR SHALL BE RESPONSIBLE FOR ANY MOWING, BRUSH AND SHRUB REMOVAL, AND SMALL TREE (10" DIAMETER OR LESS) REMOVAL REQUIRED TO INSTALL THE PROPOSED CONDUIT, COMMUNICATION VAULTS, AND HANDHOLES. THE CONTRACTOR SHALL DISPOSE OF ALL REMOVED ITEMS OFF OF THE JOB SITE. THE COST OF THIS WORK SHALL BE INCLUDED IN THE BID PRICES FOR THE CONDUIT, COMMUNICATION VAULTS AND HANDHOLES.
17.	THE CONTRACTOR SHALL PLAN AND CONDUCT FIBER OPTIC CABLE AND CONDUIT INSTALLATION OPERATIONS TO MINIMIZE THE NUMBER OF ROAD LANE CLOSURES AND TO MINIMIZE TRAFFIC DISRUPTIONS AND DELAYS FOR THE MOTORING PUBLIC.
18.	ALL COMMUNICATION DUCT SHALL BE INSTALLED IN AND WILL BE PAID FOR IN ACCORDANCE WITH SECTION 810 "UNDERGROUND RACEWAYS" OF THE STANDARD SPECIFICATIONS.
19.	THE CONTRACTOR SHALL OBTAIN ALL PERMITS REQUIRED FOR INSTALLING COMMUNICATIONS DUCT, COMMUNICATIONS VAULTS, AND HANDHOLES UNDER AND ALONG STATE, COUNTY AND TOWNSHIP ROADWAYS.
20.	THE CONTRACTOR SHALL FURNISH AND INSTALL GROUT AROUND ALL DRILLED CONDUITS LOCATED INSIDE OF HANDHOLES TO PREVENT WATER AND DIRT INTRUSION INTO THE HANDHOLE. THE COST OF THIS WORK SHALL BE INCLUDED IN THE COST OF "DRILL EXISTING HANDHOLE."
21.	WITHIN THIRTY CALENDAR DAYS AFTER CONTRACT EXECUTION, THE CONTRACTOR SHALL SUBMIT J.U.L.I.E. TICKETS TO HAVE THE UNDERGROUND UTILITIES MARKED AT THE INTERSECTIONS AND THEN SCHEDULE AN ON-SITE MEETING WITH THE RESIDENT ENGINEER AND IDOT D4 TRAFFIC OPERATIONS TO DETERMINE AND MARK THE EXACT PLACEMENT OF THE PROPOSED COMMUNICATIONS VAULTS, CONDUITS AND HANDHOLES.

MODEL Path: \\S:\CEN\W\W\ORD\ESP\AN\Hanson# 68H57 War Memorial Fiber Project\68H57 US 150 Fiber (2-2-23).dgn
 FILE NAME: S:\CEN\W\W\ORD\ESP\AN\Hanson# 68H57 War Memorial Fiber Project\68H57 US 150 Fiber (2-2-23).dgn

FAP 317A/
FAU 6675

USER NAME = Trevor.Hanson	DESIGNED -	REVISED -
PLOT SCALE = 1/11,0849" / in.	DRAWN -	REVISED -
PLOT DATE = 2/8/2023	CHECKED -	REVISED -
	DATE -	REVISED -

**STATE OF ILLINOIS
DEPARTMENT OF TRANSPORTATION**

CONSTRUCTION NOTES

SCALE: SHEET OF SHEETS STA. TO STA.

F.A. RTE.	SECTION	COUNTY	TOTAL SHEETS	SHEET NO.
*	D4 ITS SYSTEM 2023-2	PEORIA	23	4
			CONTRACT NO. 68H57	
		ILLINOIS FED. AID PROJECT		

SUMMARY OF QUANTITIES

CONST. CODE
 0021
 100% STATE
 0% CITY
 ITS
 URBAN
 PEORIA

ITEM NUMBER	ITEM DESCRIPTION	UNIT	TOTAL QTY.	PEORIA
67100100	MOBILIZATION	L SUM	1.0	1.0
81028350	UNDERGROUND CONDUIT, PVC, 2" DIA.	FOOT	59.0	59.0
81400720	DOUBLE HANDHOLE, PORTLAND CEMENT CONCRETE	EACH	9.0	9.0
87900200	DRILL EXISTING HANDHOLE	EACH	9.0	9.0
X8710304	FIBER OPTIC SPLICE-LATERAL	EACH	10.0	10.0
X1400240	FIBER OPTIC CABLE IN CONDUIT, 96 FIBERS, SINGLE MODE	FOOT	59143.0	59143.0
X7010216	TRAFFIC CONTROL AND PROTECTION, (SPECIAL)	L SUM	1.0	1.0
X8710050	FIBER OPTIC ETHERNET DROP AND REPEAT SWITCH	EACH	12.0	12.0
X8710101	ETHERNET MANAGE SWITCH	EACH	9.0	2.0
X8710103	ETHERNET SWITCH	EACH	2.0	9.0

MODEL: Default
 FILE NAME: S:\GPN\IN\WORD\DESIGN\A\Hanson\68H57 War Memorial Fiber Project\68H57 US 150 Fiber (2-2-23).dgn

USER NAME = Trevor.Hanson	DESIGNED -	REVISED - TJH 02-21-23
	DRAWN -	REVISED -
PLOT SCALE = 151.0849 / in.	CHECKED -	REVISED -
PLOT DATE = 2/8/2023	DATE -	REVISED -

STATE OF ILLINOIS
 DEPARTMENT OF TRANSPORTATION

SUMMARY OF QUANTITIES

SCALE: SHEET OF SHEETS STA. TO STA.

* FAP 317A
 FAU 6675

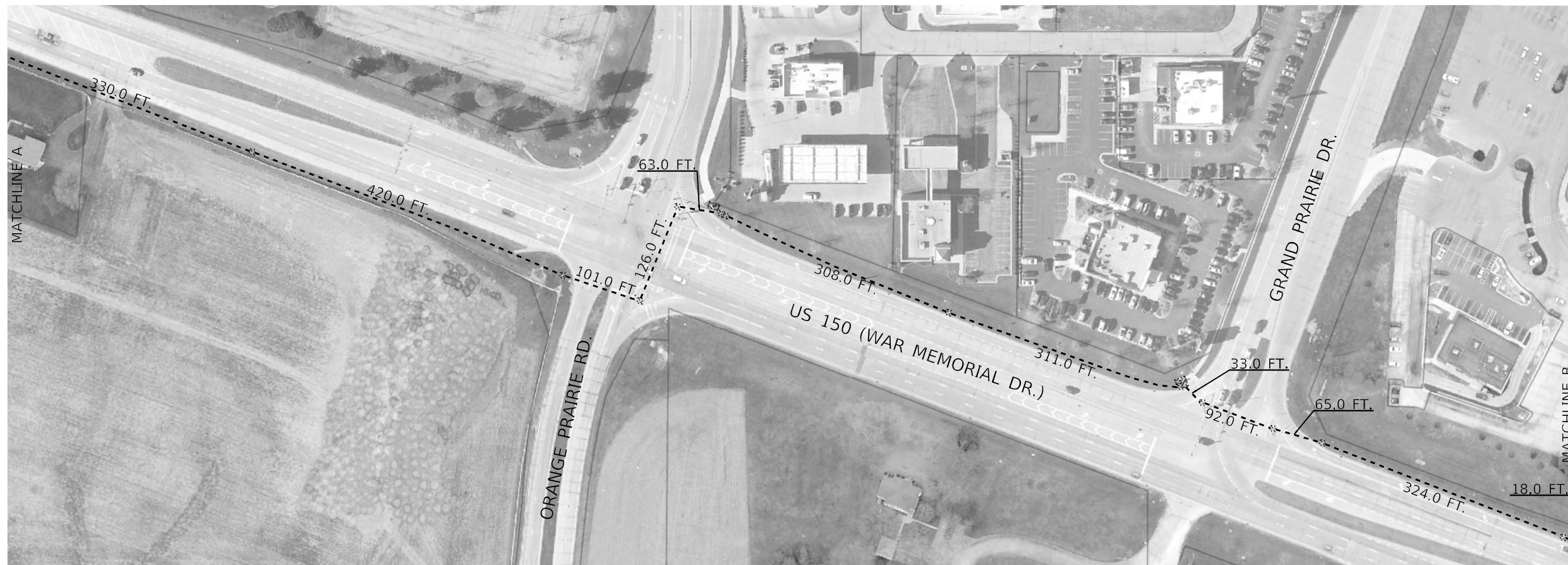
F.A. RTE.	SECTION	COUNTY	TOTAL SHEETS	SHEET NO.
*	D4 ITS SYSTEM 2023-2	PEORIA	23	5
			CONTRACT NO. 68H57	
ILLINOIS FED. AID PROJECT				

SCHEDULE OF QUANTITIES	UNIT	TOTAL QTY.	US 150	US 150 & KOERNER/TRIGGER	US 150 & IL 91/SUMMERSHADE	US 150 & BIG HOLLOW/WILLOW KNOLLS	US 150 & ALLEN/CHARTER OAK	US 150 & STERLING/GLEN	US 150 & UNIVERSITY	US 150 & SHERIDAN	US 150 & IL 40	US 150 & PROSPECT	US 150 & IL 29 ITS CABINET
ITEM DESCRIPTION													
MOBILIZATION	L SUM	1.0	0.5	0.1		0.1	0.1		0.1		0.1		
UNDERGROUND CONDUIT, PVC, 2" DIA.	FOOT	59.0		5.0	7.0	7.0	5.0	7.0	7.0	5.0	13.0	3.0	
DOUBLE HANDHOLE, PORTLAND CEMENT CONCRETE	EACH	9.0		1.0	1.0	1.0	1.0	1.0	1.0	1.0	1.0	1.0	
DRILL EXISTING HANDHOLE	EACH	9.0		1.0	1.0	1.0	1.0	1.0	1.0	1.0	1.0	1.0	
FIBER OPTIC SPLICE-LATERAL	EACH	10.0		1.0	1.0	1.0	1.0	1.0	1.0	1.0	1.0	1.0	1.0
FIBER OPTIC CABLE IN CONDUIT, 96 FIBERS, SINGLE MODE	FOOT	59143.0	59143.0										
TRAFFIC CONTROL AND PROTECTION, (SPECIAL)	L SUM	1.0	0.5	0.1		0.1	0.1		0.1		0.1		

MODEL Path: \\S:\CEN\W\W\ORD\ESP\AN\Hanson.# 68H57 War Memorial Fiber Project\68H57_US_150_Fiber (2-2-23).dgn
 FILE NAME: S:\CEN\W\W\ORD\ESP\AN\Hanson.# 68H57 War Memorial Fiber Project\68H57_US_150_Fiber (2-2-23).dgn

* FAP 317A
FAU 6675

USER NAME = Trevor.Hanson	DESIGNED -	REVISED -	STATE OF ILLINOIS DEPARTMENT OF TRANSPORTATION	SCHEDULE OF QUANTITIES				F.A. RTE.	SECTION	COUNTY	TOTAL SHEETS	SHEET NO.
PLOT SCALE = 151,0849 ' / in.	DRAWN -	REVISED -						* D4 ITS SYSTEM 2023-2	PEORIA	23	6	
PLOT DATE = 2/8/2023	CHECKED -	REVISED -		SCALE: SHEET OF SHEETS STA. TO STA.				CONTRACT NO. 68H57				
	DATE -	REVISED -						ILLINOIS FED. AID PROJECT				



MODEL: Default
 FILE NAME: S:\CEN\WV\ORD\DESIGN\AN\Hanson# 68H57 War Memorial Fiber Project\68H57_US_150_Fiber (2-2-23).dgn

FAP 317A
FAU 6675

NOT TO SCALE

USER NAME = Trevor.Hanson	DESIGNED -	REVISED -
	DRAWN -	REVISED -
PLOT SCALE = 1/11,0849" / in.	CHECKED -	REVISED -
PLOT DATE = 2/8/2023	DATE -	REVISED -

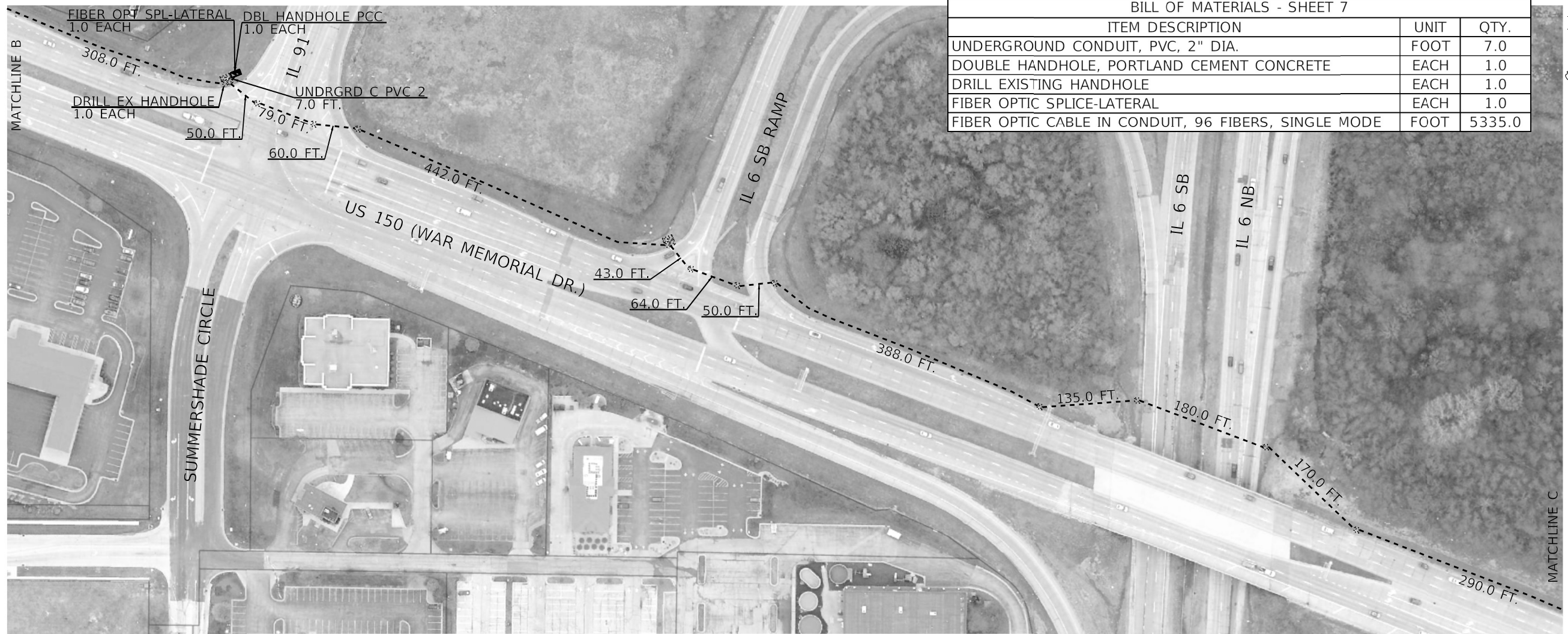
STATE OF ILLINOIS
DEPARTMENT OF TRANSPORTATION

PROPOSED FIBER OPTIC INSTALLATION ALONG US 150
FROM KOERNER RD/TRIGGER RD. TO GRAND PRAIRIE DR. - PEORIA

SCALE: SHEET OF SHEETS STA. TO STA.

F.A. RTE.	SECTION	COUNTY	TOTAL SHEETS	SHEET NO.
*	D4 ITS SYSTEM 2023-2	PEORIA	23	7
			CONTRACT NO. 68H57	
ILLINOIS FED. AID PROJECT				

BILL OF MATERIALS - SHEET 7		
ITEM DESCRIPTION	UNIT	QTY.
UNDERGROUND CONDUIT, PVC, 2" DIA.	FOOT	7.0
DOUBLE HANDHOLE, PORTLAND CEMENT CONCRETE	EACH	1.0
DRILL EXISTING HANDHOLE	EACH	1.0
FIBER OPTIC SPLICE-LATERAL	EACH	1.0
FIBER OPTIC CABLE IN CONDUIT, 96 FIBERS, SINGLE MODE	FOOT	5335.0



FAP 317A
FAU 6675

NOT TO SCALE

MODEL: Default
FILE NAME: S:\CEN\WV\ORD\DESIGN\AN\Hanson# 68H57 War Memorial Fiber Project\68H57_US_150_Fiber (2-2-23).dgn

USER NAME = Trevor.Hanson	DESIGNED -	REVISED -
PLOT SCALE = 1/16" = 151.0849' / in.	DRAWN -	REVISED -
PLOT DATE = 2/8/2023	CHECKED -	REVISED -
	DATE -	REVISED -

STATE OF ILLINOIS
DEPARTMENT OF TRANSPORTATION

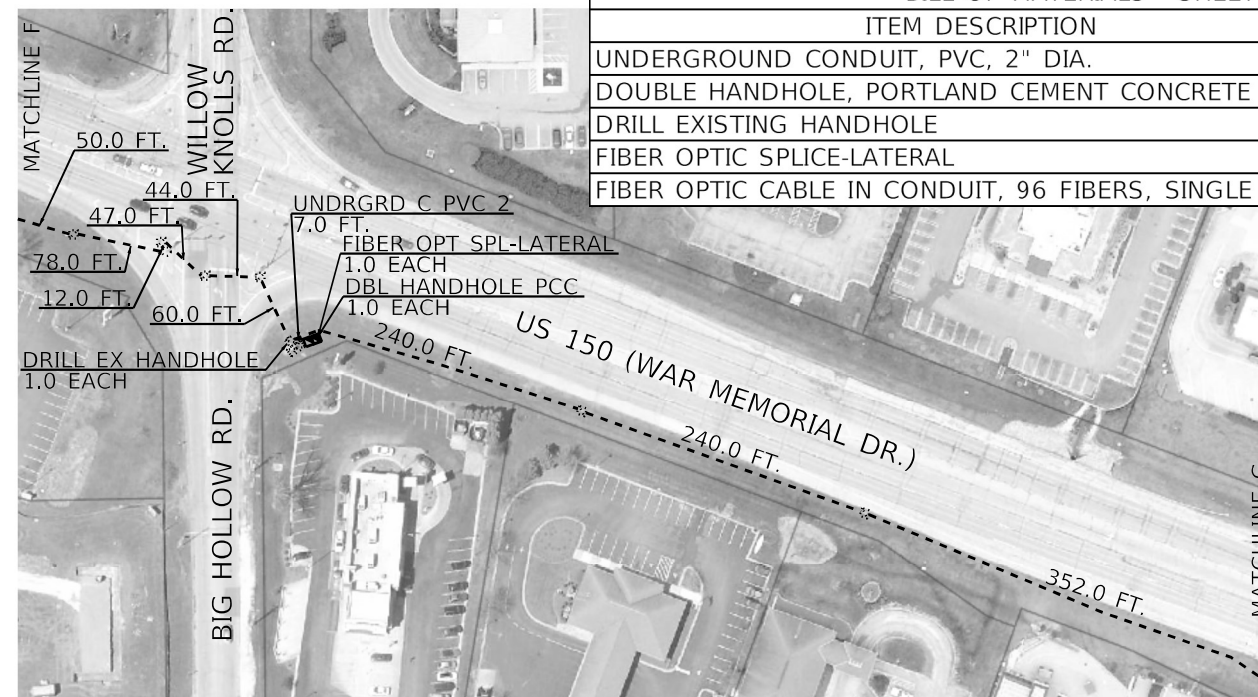
PROPOSED FIBER OPTIC INSTALLATION ALONG US 150
FROM IL 91/SUMMERSHADE CIR. TO CHESHIRE DR. - PEORIA

SCALE: SHEET OF SHEETS STA. TO STA.

F.A. RTE.	SECTION	COUNTY	TOTAL SHEETS	SHEET NO.
*	D4 ITS SYSTEM 2023-2	PEORIA	23	8
CONTRACT NO. 68H57				
ILLINOIS FED. AID PROJECT				

BILL OF MATERIALS - SHEET 8

ITEM DESCRIPTION	UNIT	QTY.
UNDERGROUND CONDUIT, PVC, 2" DIA.	FOOT	7.0
DOUBLE HANDHOLE, PORTLAND CEMENT CONCRETE	EACH	1.0
DRILL EXISTING HANDHOLE	EACH	1.0
FIBER OPTIC SPLICE-LATERAL	EACH	1.0
FIBER OPTIC CABLE IN CONDUIT, 96 FIBERS, SINGLE MODE	FOOT	5487.0



MODEL: Default
FILE NAME: S:\CEN\WV\ORD\DESIGN\AN\Hanson# 68H57 War Memorial Fiber Project\68H57 US 150 Fiber (2-2-23).dgn

* FAP 317A
FAU 6675

NOT TO SCALE

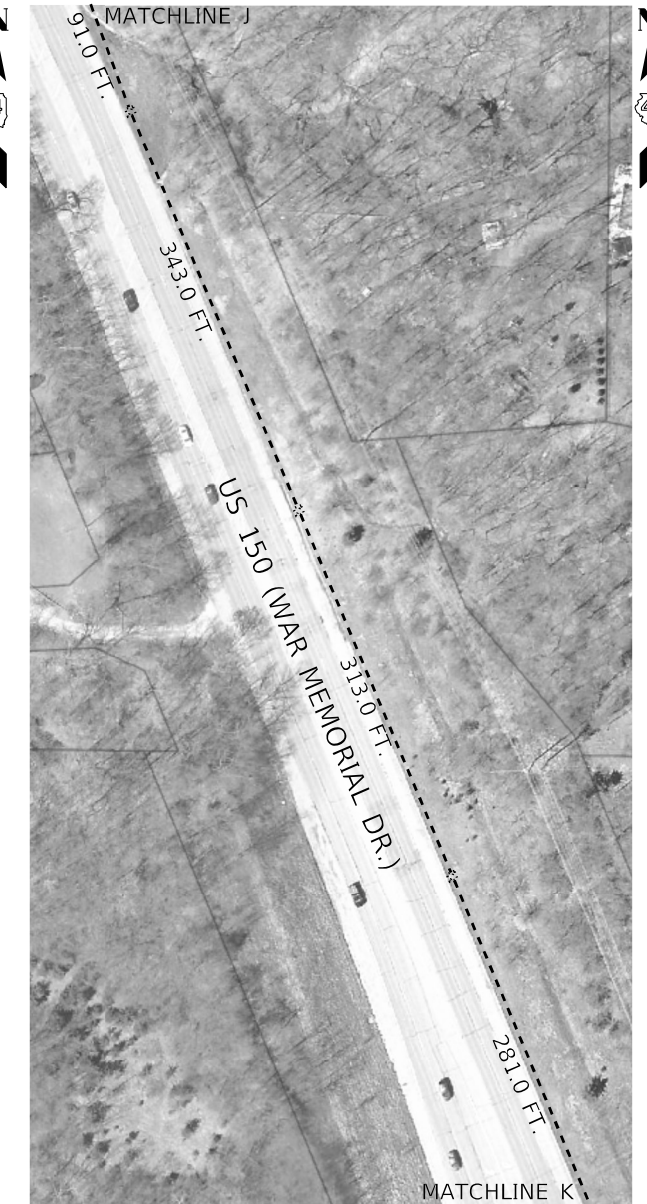
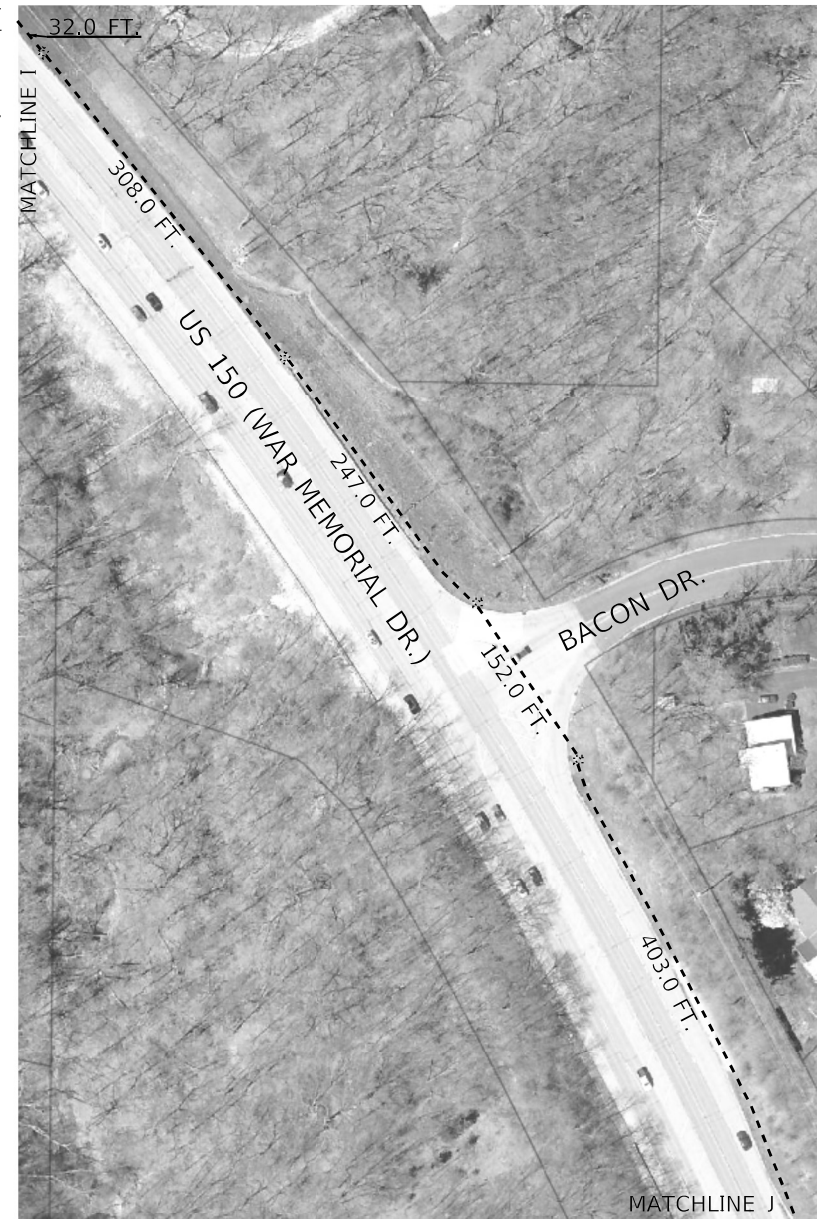
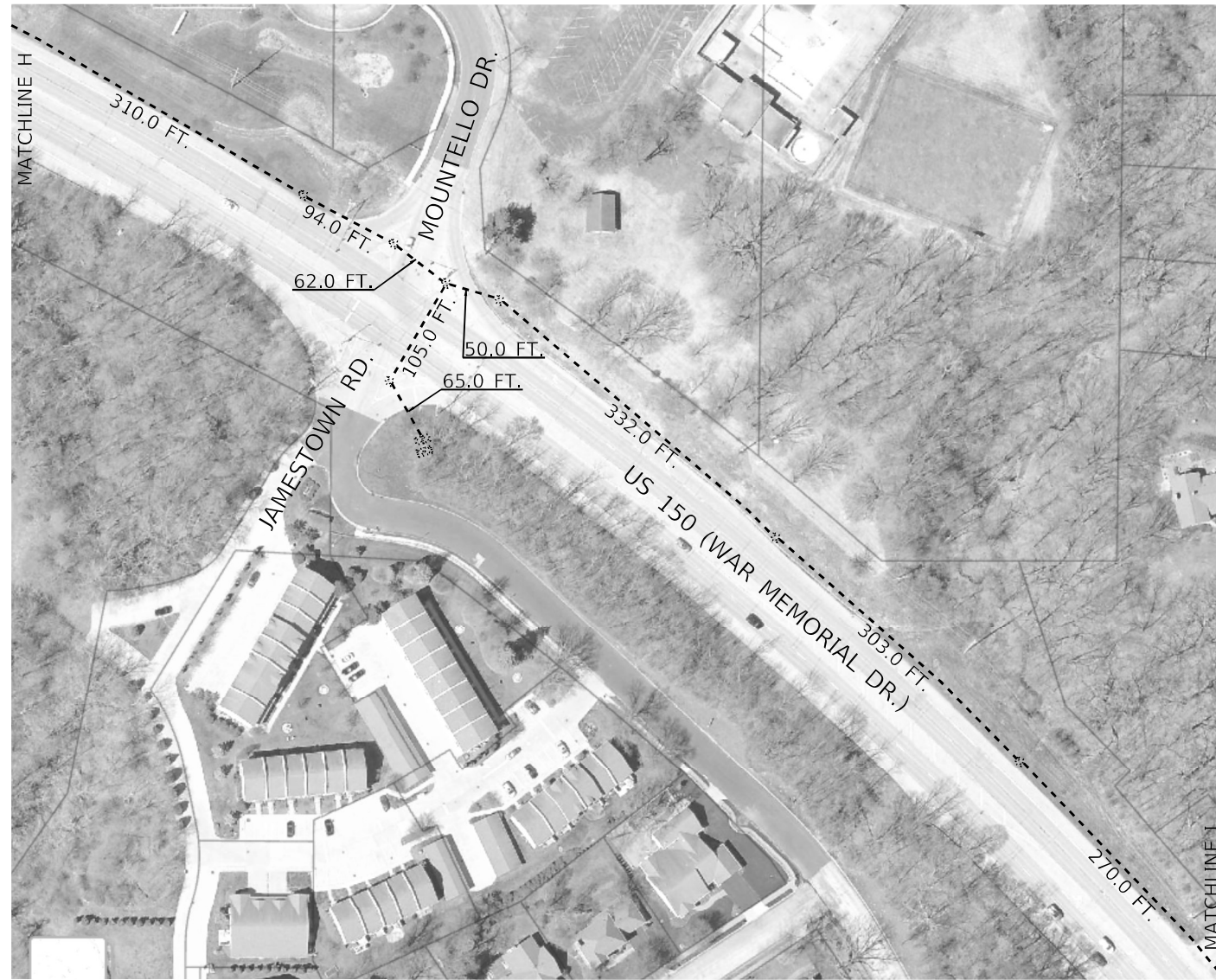
USER NAME = Trevor.Hanson	DESIGNED -	REVISED -
	DRAWN -	REVISED -
PLOT SCALE = 151,0849 ' / in.	CHECKED -	REVISED -
PLOT DATE = 2/8/2023	DATE -	REVISED -

**STATE OF ILLINOIS
DEPARTMENT OF TRANSPORTATION**

**PROPOSED FIBER OPTIC INSTALLATION ALONG US 150
FROM FROSTWOOD TO BARING TRACE/WILLOW KNOLLS - PEORIA**

SCALE: SHEET OF SHEETS STA. TO STA.

F.A. RTE.	SECTION	COUNTY	TOTAL SHEETS	SHEET NO.
*	D4 ITS SYSTEM 2023-2	PEORIA	23	9
			CONTRACT NO. 68H57	
ILLINOIS FED. AID PROJECT				



BILL OF MATERIALS - SHEET 9		
ITEM DESCRIPTION	UNIT	QTY.
FIBER OPTIC CABLE IN CONDUIT, 96 FIBERS, SINGLE MODE	FOOT	4511.0

MODEL: Default
 FILE NAME: S:\CEN\WV\ORD\ESP\AN\Hanson# 68H57 War Memorial Fiber Project\68H57_US_150_Fiber (2-2-23).dgn

USER NAME = Trevor.Hanson	DESIGNED -	REVISED -
PLOT SCALE = 1/16" = 151.0849' / in.	DRAWN -	REVISED -
PLOT DATE = 2/8/2023	CHECKED -	REVISED -
	DATE -	REVISED -

STATE OF ILLINOIS
DEPARTMENT OF TRANSPORTATION

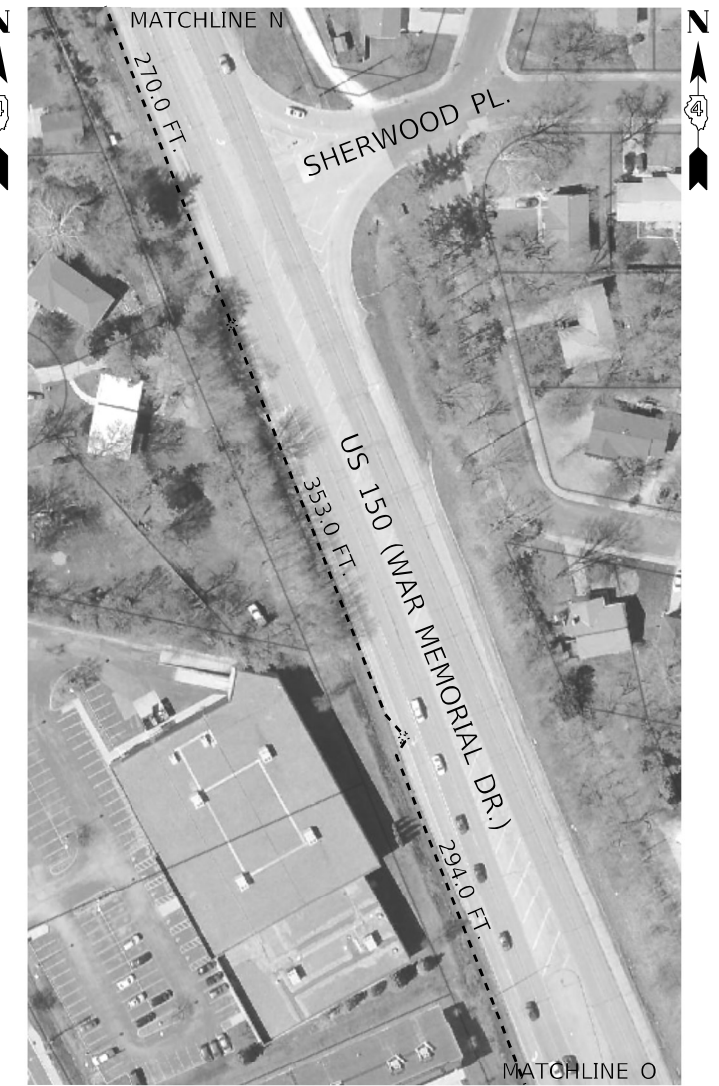
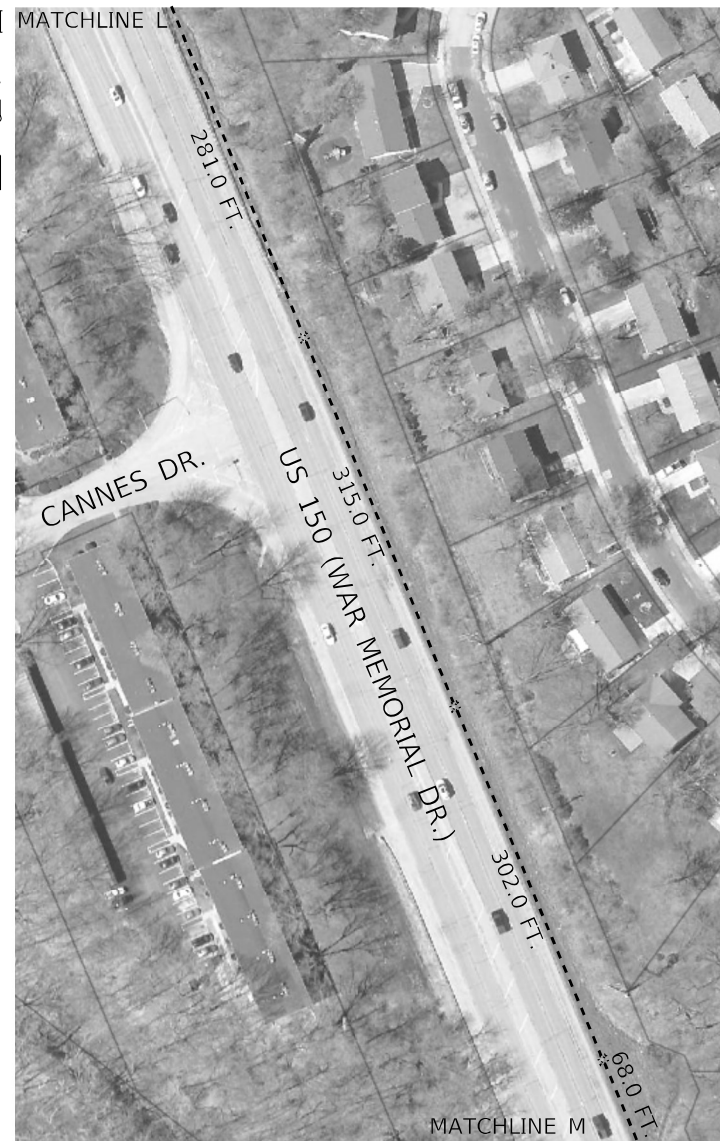
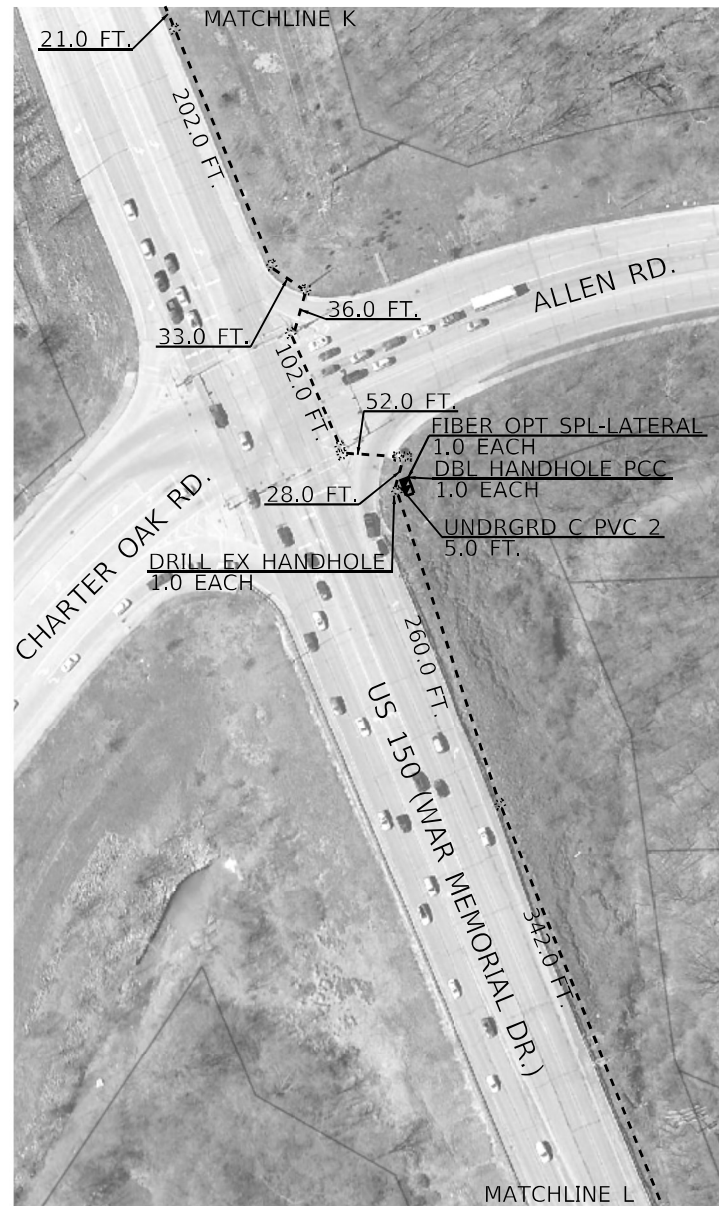
PROPOSED FIBER OPTIC INSTALLATION ALONG US 150
MOUNTELLO DR./JAMESTOWN RD. TO BACON DR. - PEORIA

SCALE: SHEET OF SHEETS STA. TO STA.

FAP 317A
FAU 6675

NOT TO SCALE

F.A. RTE.	SECTION	COUNTY	TOTAL SHEETS	SHEET NO.
*	D4 ITS SYSTEM 2023-2	PEORIA	23	10
			CONTRACT NO. 68H57	
		ILLINOIS	FED. AID PROJECT	



BILL OF MATERIALS - SHEET 10			
ITEM DESCRIPTION	UNIT	QTY.	
UNDERGROUND CONDUIT, PVC, 2' DIA.	FOOT	5.0	
DOUBLE HANDHOLE, PORTLAND CEMENT CONCRETE	EACH	1.0	
DRILL EXISTING HANDHOLE	EACH	1.0	
FIBER OPTIC SPLICE-LATERAL	EACH	1.0	
FIBER OPTIC CABLE IN CONDUIT, 96 FIBERS, SINGLE MODE	FOOT	4851.0	

MODEL Path: \\S:\CEN\WV\ORD\ESP\AN\Hanson\68H57 War Memorial Fiber Project\68H57 US 150 Fiber (2-2-23).dgn
 FILE NAME: S:\CEN\WV\ORD\ESP\AN\Hanson\68H57 War Memorial Fiber Project\68H57 US 150 Fiber (2-2-23).dgn

USER NAME = Trevor.Hanson	DESIGNED -	REVISED -
PLOT SCALE = 1/16" = 151.0849' / in.	DRAWN -	REVISED -
PLOT DATE = 2/8/2023	CHECKED -	REVISED -
	DATE -	REVISED -

STATE OF ILLINOIS
DEPARTMENT OF TRANSPORTATION

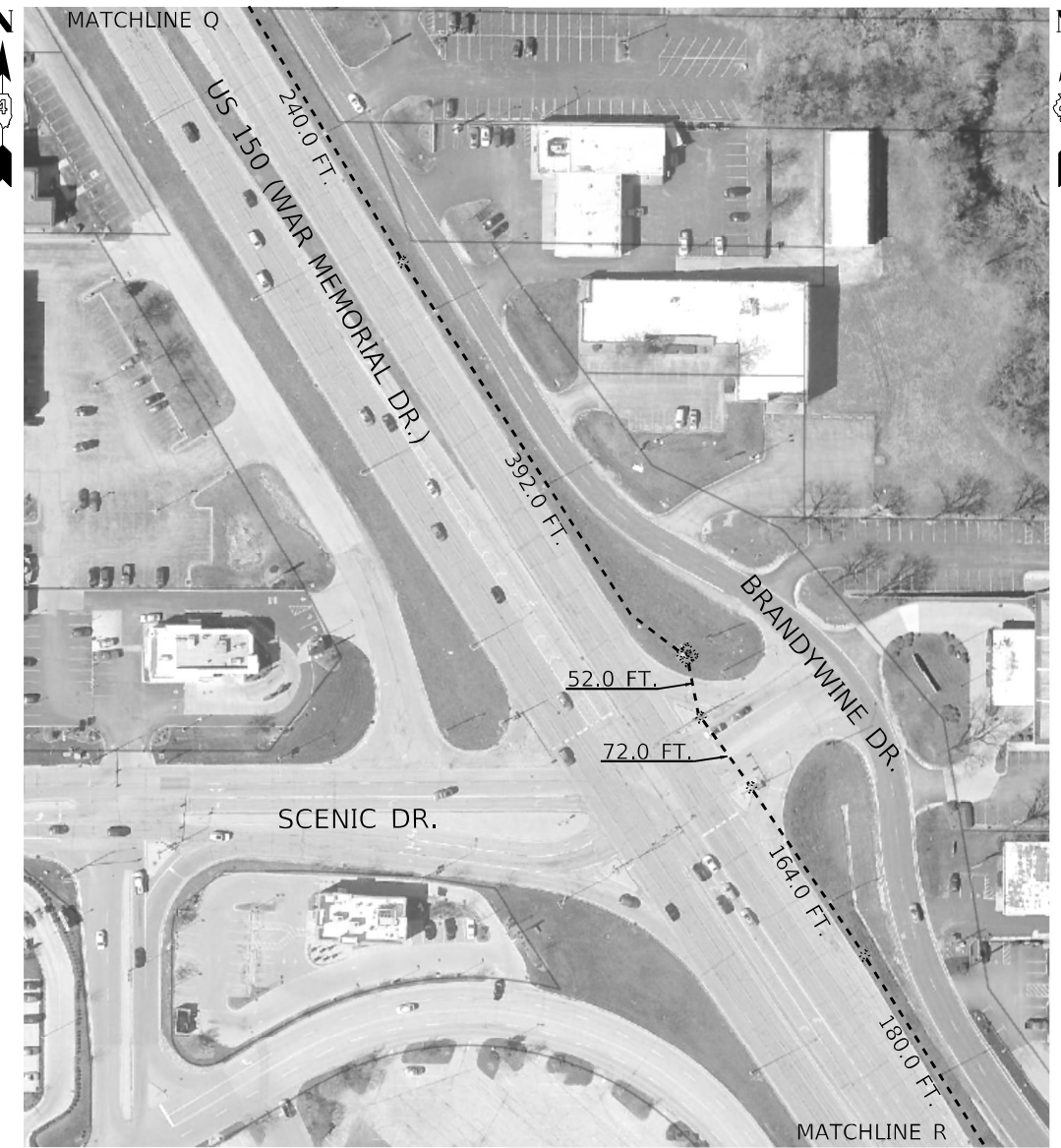
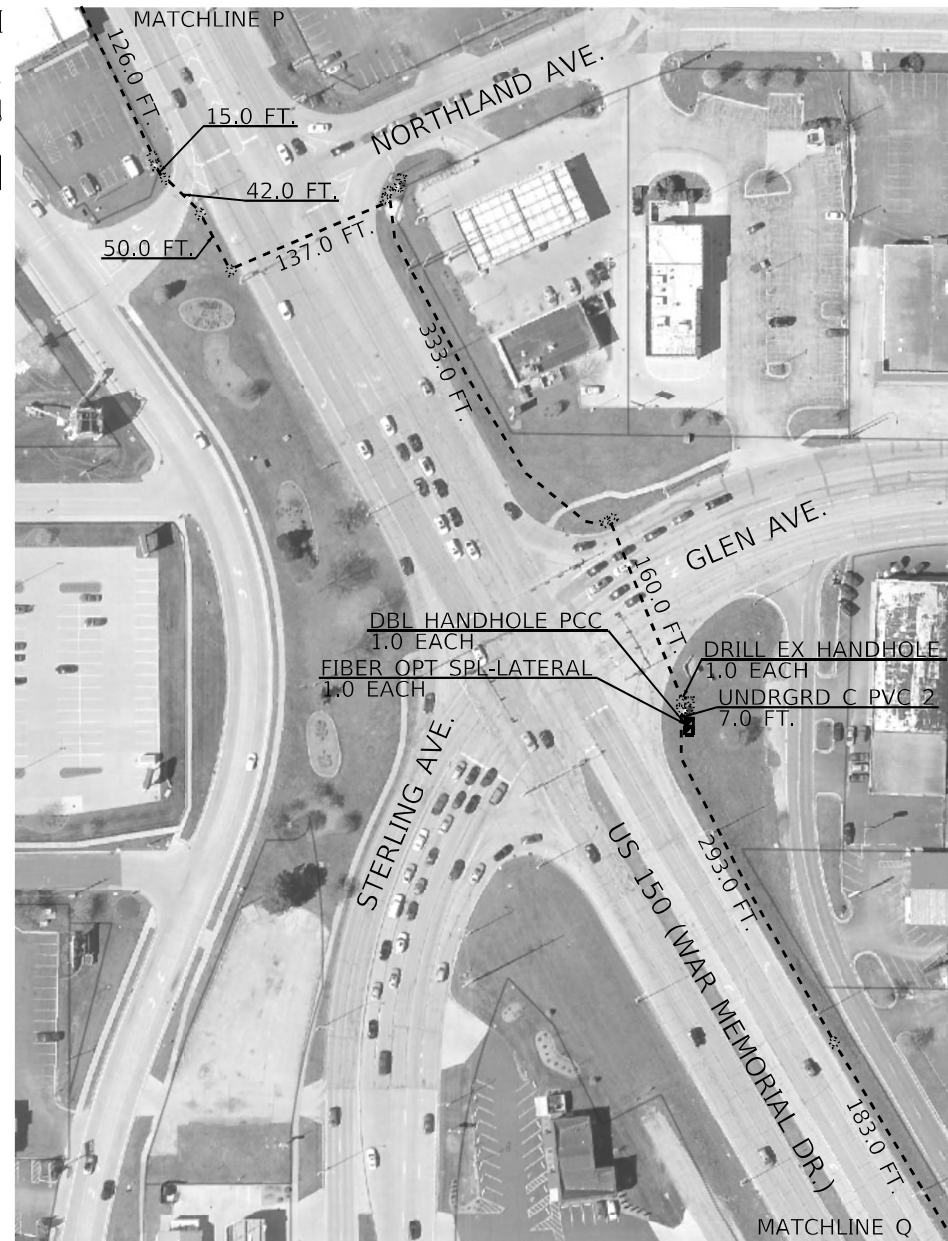
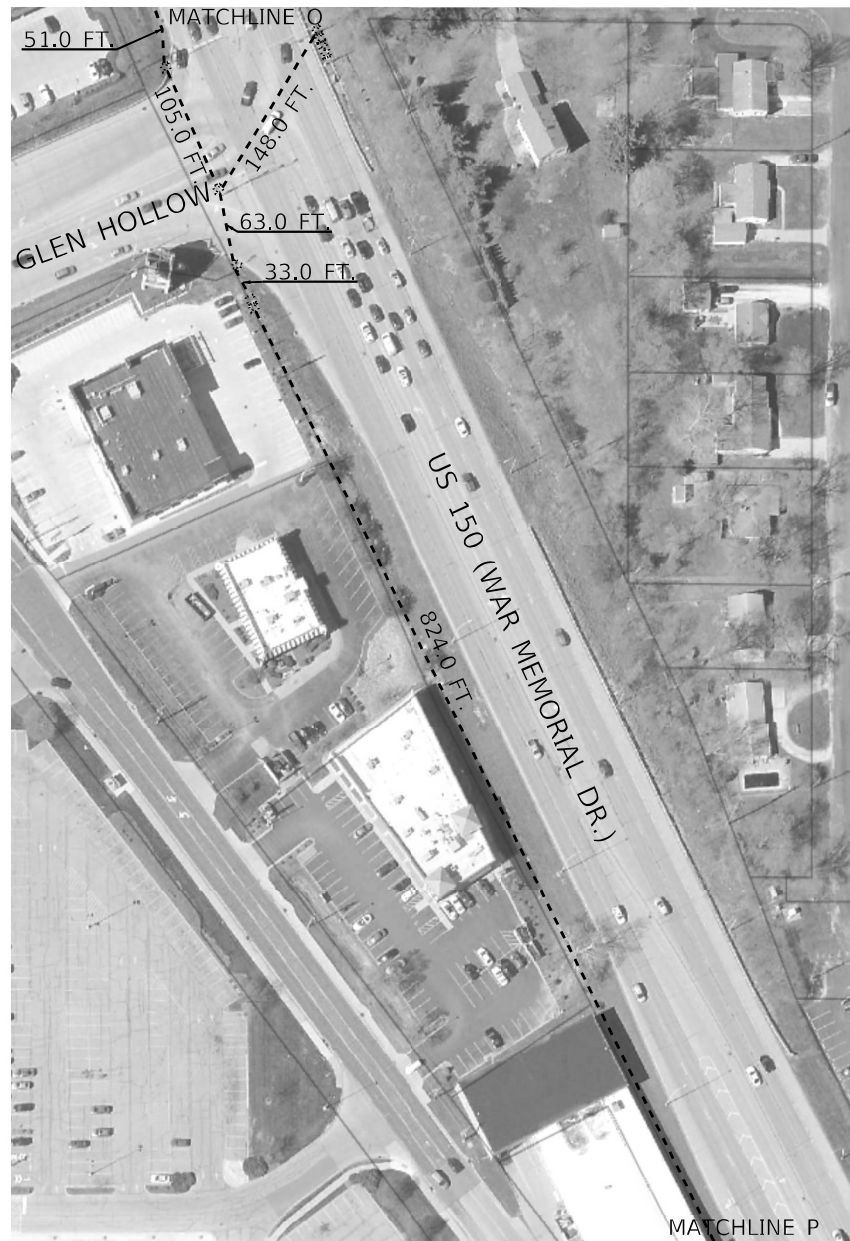
PROPOSED FIBER OPTIC INSTALLATION ALONG US 150
ALLEN RD/CHARTER OAK RD. TO SHERWOOD PL. - PEORIA

SCALE: SHEET OF SHEETS STA. TO STA.

FAP 317A
FAU 6675

NOT TO SCALE

F.A. RTE.	SECTION	COUNTY	TOTAL SHEETS	SHEET NO.
*	D4 ITS SYSTEM 2023-2	PEORIA	23	11
			CONTRACT NO. 68H57	
		ILLINOIS	FED. AID PROJECT	



BILL OF MATERIALS - SHEET 11		
ITEM DESCRIPTION	UNIT	QTY.
UNDERGROUND CONDUIT, PVC, 2" DIA.	FOOT	7.0
DOUBLE HANDHOLE, PORTLAND CEMENT CONCRETE	EACH	1.0
DRILL EXISTING HANDHOLE	EACH	1.0
FIBER OPTIC SPLICE-LATERAL	EACH	1.0
FIBER OPTIC CABLE IN CONDUIT, 96 FIBERS, SINGLE MODE	FOOT	5065.0

MODEL: Default
 FILE NAME: S:\GEN\WV\ORD\SP\AN\Hanson# 68H57 War Memorial Fiber Project\68H57 US 150 Fiber (2-2-23).dgn

USER NAME = Trevor.Hanson	DESIGNED -	REVISED -
	DRAWN -	REVISED -
PLOT SCALE = 1/11,0849 ' / in.	CHECKED -	REVISED -
PLOT DATE = 2/8/2023	DATE -	REVISED -

STATE OF ILLINOIS
DEPARTMENT OF TRANSPORTATION

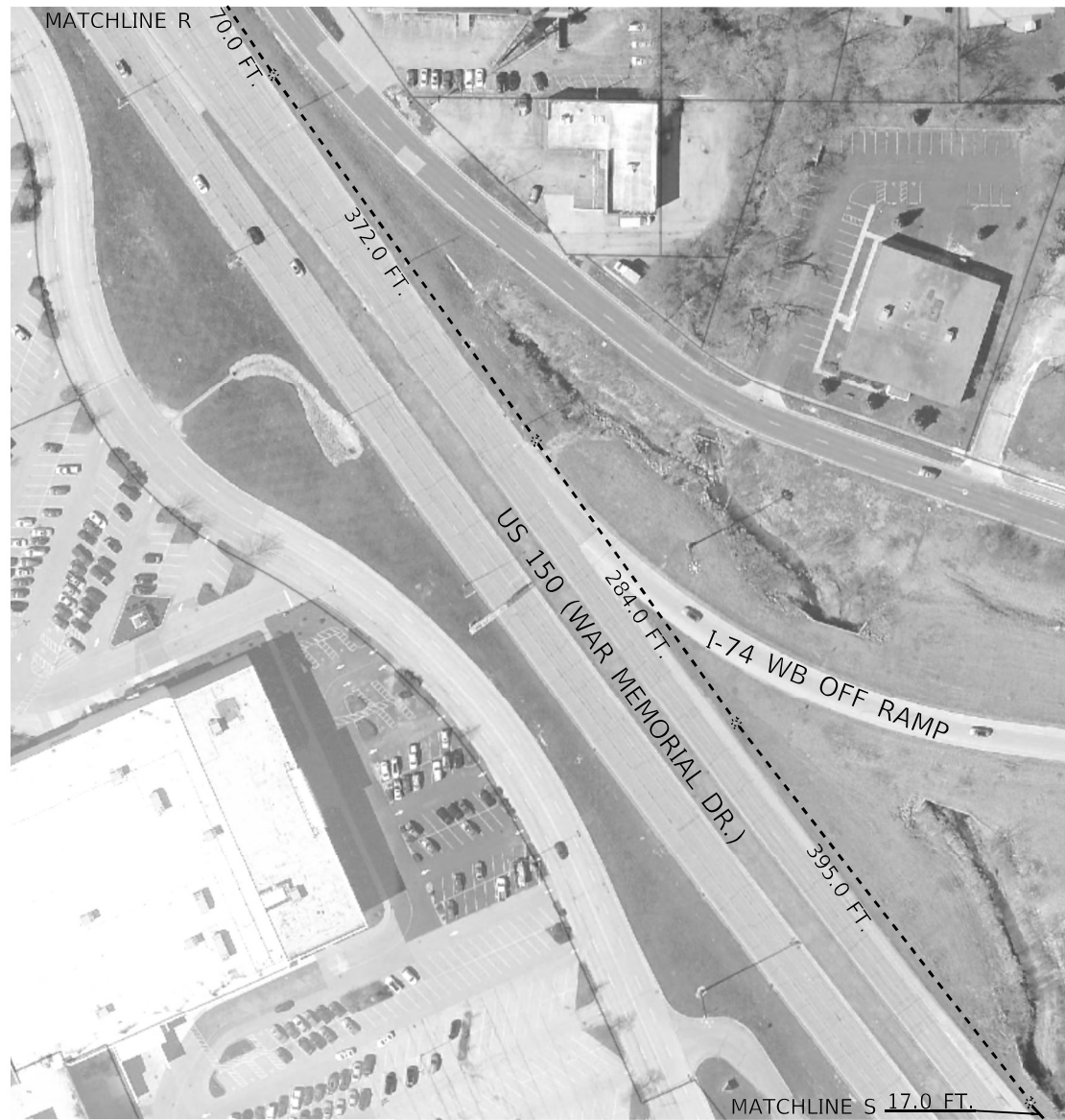
PROPOSED FIBER OPTIC INSTALLATION ALONG US 150
FROM GLEN HOLLOW TO SCENIC DR/BRANDYWINE DR. - PEORIA

SCALE: SHEET OF SHEETS STA. TO STA.

FAP 317A
FAU 6675

NOT TO SCALE

F.A. RTE.	SECTION	COUNTY	TOTAL SHEETS	SHEET NO.
*	D4 ITS SYSTEM 2023-2	PEORIA	23	12
			CONTRACT NO. 68H57	
		ILLINOIS	FED. AID PROJECT	



BILL OF MATERIALS - SHEET 12			
ITEM DESCRIPTION	UNIT	QTY.	
FIBER OPTIC CABLE IN CONDUIT, 96 FIBERS, SINGLE MODE	FOOT	2572.0	

MODEL: Default
 FILE NAME: S:\CEN\WV\ORD\DESIGN\AN\Hanson_68H57_War_Memorial_Fiber_Project\68H57_US_150_Fiber_02-23-23.dgn

USER NAME = Trevor.Hanson	DESIGNED -	REVISED -
	DRAWN -	REVISED -
PLOT SCALE = 151.0849' / in.	CHECKED -	REVISED -
PLOT DATE = 2/8/2023	DATE -	REVISED -

STATE OF ILLINOIS
DEPARTMENT OF TRANSPORTATION

PROPOSED FIBER OPTIC INSTALLATION ALONG US 150
FROM I-74 WB OFF RAMP TO I-74 EB ON RAMP - PEORIA

SCALE: SHEET OF SHEETS STA. TO STA.

FAP 317A
FAU 6675

NOT TO SCALE

F.A. RTE.	SECTION	COUNTY	TOTAL SHEETS	SHEET NO.
*	D4 ITS SYSTEM 2023-2	PEORIA	23	13
			CONTRACT NO. 68H57	
		ILLINOIS	FED. AID PROJECT	



BILL OF MATERIALS - SHEET 13		
ITEM DESCRIPTION	UNIT	QTY.
FIBER OPTIC CABLE IN CONDUIT, 96 FIBERS, SINGLE MODE	FOOT	1715.0

MODEL: Default
 FILE NAME: S:\CEN\WV\ORD\DESIGN\AN\Hanson_68H57_War_Memorial_Fiber_Project\68H57_US_150_Fiber_12-2-23.dgn

* FAP 317A
FAU 6675

NOT TO SCALE

USER NAME = Trevor.Hanson	DESIGNED -	REVISED -
PLOT SCALE = 151.0849' / in.	DRAWN -	REVISED -
PLOT DATE = 2/8/2023	CHECKED -	REVISED -
	DATE -	REVISED -

**STATE OF ILLINOIS
DEPARTMENT OF TRANSPORTATION**

**PROPOSED FIBER OPTIC INSTALLATION ALONG US 150
FROM I-74 EB ON RAMP TO BRANDYWINE/MEADOWBROOK - PEORIA**

SCALE: SHEET OF SHEETS STA. TO STA.

F.A. RTE.	SECTION	COUNTY	TOTAL SHEETS	SHEET NO.
*	D4 ITS SYSTEM 2023-2	PEORIA	23	14
			CONTRACT NO. 68H57	
		ILLINOIS	FED. AID PROJECT	



BILL OF MATERIALS - SHEET 14		
ITEM DESCRIPTION	UNIT	QTY.
UNDERGROUND CONDUIT, PVC, 2" DIA.	FOOT	7.0
DOUBLE HANDHOLE, PORTLAND CEMENT CONCRETE	EACH	1.0
DRILL EXISTING HANDHOLE	EACH	1.0
FIBER OPTIC SPLICE-LATERAL	EACH	1.0
FIBER OPTIC CABLE IN CONDUIT, 96 FIBERS, SINGLE MODE	FOOT	4334.0



MODEL: Default
 FILE NAME: S:\CEN\WV\ORD\ESP\AN\Hanson# 68H57 War Memorial Fiber Project\68H57 US 150 Fiber (2-2-23).dgn

FAP 317A
FAU 6675

NOT TO SCALE

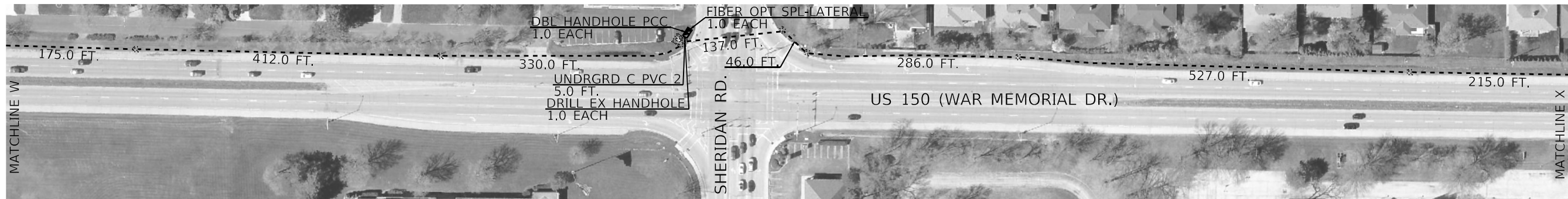
USER NAME = Trevor.Hanson	DESIGNED -	REVISED -
PLOT SCALE = 151.0849' / in.	DRAWN -	REVISED -
PLOT DATE = 2/8/2023	CHECKED -	REVISED -
	DATE -	REVISED -

**STATE OF ILLINOIS
DEPARTMENT OF TRANSPORTATION**

**PROPOSED FIBER OPTIC INSTALLATION ALONG US 150
FROM BRANDYWINE /MEADOWBROOK TO UNIVERSITY ST. - PEORIA**

SCALE: SHEET OF SHEETS STA. TO STA.

F.A. RTE.	SECTION	COUNTY	TOTAL SHEETS	SHEET NO.
*	D4 ITS SYSTEM 2023-2	PEORIA	23	15
CONTRACT NO. 68H57				
ILLINOIS FED. AID PROJECT				



BILL OF MATERIALS - SHEET 15		
ITEM DESCRIPTION	UNIT	QTY.
UNDERGROUND CONDUIT, PVC, 2" DIA.	FOOT	18.0
DOUBLE HANDHOLE, PORTLAND CEMENT CONCRETE	EACH	2.0
DRILL EXISTING HANDHOLE	EACH	2.0
FIBER OPTIC SPLICE-LATERAL	EACH	2.0
FIBER OPTIC CABLE IN CONDUIT, 96 FIBERS, SINGLE MODE	FOOT	7722.0

NOT TO SCALE

MODEL: Default
FILE NAME: S:\CEN\W\ORD\DESIGN\AV\Hanson# 68H57 War Memorial Fiber Project\68H57_US_150_Fiber (2-2-23).dgn

USER NAME = Trevor.Hanson	DESIGNED -	REVISED -
PLOT SCALE = 1/16" = 151.0849' / in.	DRAWN -	REVISED -
PLOT DATE = 2/8/2023	CHECKED -	REVISED -
	DATE -	REVISED -

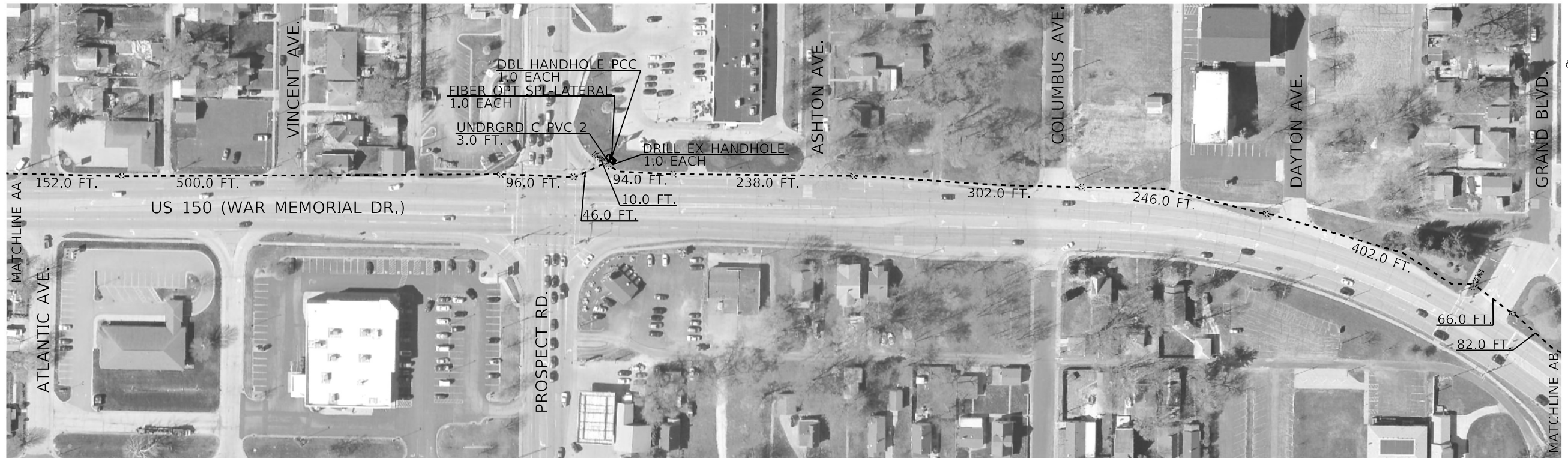
**STATE OF ILLINOIS
DEPARTMENT OF TRANSPORTATION**

**PROPOSED FIBER OPTIC INSTALLATION ALONG US 150
FROM SHERIDAN RD. TO NEW YORK AVE. - PEORIA**

SCALE: SHEET OF SHEETS STA. TO STA.

FAP 317A
FAU 6675

F.A. RTE.	SECTION	COUNTY	TOTAL SHEETS	SHEET NO.
*	D4 ITS SYSTEM 2023-2	PEORIA	23	16
CONTRACT NO. 68H57				
ILLINOIS FED. AID PROJECT				



BILL OF MATERIALS - SHEET 16		
ITEM DESCRIPTION	UNIT	QTY.
UNDERGROUND CONDUIT, PVC, 2" DIA.	FOOT	3.0
DOUBLE HANDHOLE, PORTLAND CEMENT CONCRETE	EACH	1.0
DRILL EXISTING HANDHOLE	EACH	1.0
FIBER OPTIC SPLICE-LATERAL	EACH	1.0
FIBER OPTIC CABLE IN CONDUIT, 96 FIBERS, SINGLE MODE	FOOT	5336.0

MODEL: Default
 FILE NAME: S:\CEN\WV\ORD\DESIGN\AN\Hanson# 68H57 War Memorial Fiber Project\68H57 US 150 Fiber (2-2-23).dgn

USER NAME = Trevor.Hanson	DESIGNED -	REVISED -
PLOT SCALE = 151.0849' / in.	DRAWN -	REVISED -
PLOT DATE = 2/8/2023	CHECKED -	REVISED -
	DATE -	REVISED -

STATE OF ILLINOIS
DEPARTMENT OF TRANSPORTATION

PROPOSED FIBER OPTIC INSTALLATION ALONG US 150
FROM WISCONSIN AVE/BOULEVARD AVE. TO GRAND BLVD. - PEORIA

SCALE: SHEET OF SHEETS STA. TO STA.

FAP 317A
FAU 6675

F.A. RTE.	SECTION	COUNTY	TOTAL SHEETS	SHEET NO.
*	D4 ITS SYSTEM 2023-2	PEORIA	23	17
CONTRACT NO. 68H57				
ILLINOIS FED. AID PROJECT				

NOT TO SCALE



BILL OF MATERIALS - SHEET 17		
ITEM DESCRIPTION	UNIT	QTY.
FIBER OPTIC CABLE IN CONDUIT, 96 FIBERS, SINGLE MODE	FOOT	2552.0

MODEL: Default
 FILE NAME: S:\CEN\WV\ORD\ESP\AN\Hanson.# 68H57 War Memorial Fiber Project\68H57_US_150_Fiber (2-2-23).dgn

USER NAME = Trevor.Hanson	DESIGNED -	REVISED -
	DRAWN -	REVISED -
PLOT SCALE = 151.0849 ' / in.	CHECKED -	REVISED -
PLOT DATE = 2/8/2023	DATE -	REVISED -

STATE OF ILLINOIS
DEPARTMENT OF TRANSPORTATION

PROPOSED FIBER OPTIC INSTALLATION ALONG US 150
BETWEEN GRAND BLVD. AND HARVARD /RUPPMAN PLAZA - PEORIA

SCALE: SHEET OF SHEETS STA. TO STA.

FAP 317A
FAU 6675

NOT TO SCALE

F.A. RTE.	SECTION	COUNTY	TOTAL SHEETS	SHEET NO.
*	D4 ITS SYSTEM 2023-2	PEORIA	23	18
			CONTRACT NO. 68H57	
		ILLINOIS	FED. AID PROJECT	



BILL OF MATERIALS - SHEET 18		
ITEM DESCRIPTION	UNIT	QTY.
FIBER OPTIC CABLE IN CONDUIT, 96 FIBERS, SINGLE MODE	FOOT	1513.0

MODEL: Default
 FILE NAME: S:\CEN\IN\WORK\DESIGN\AN\Hanson_68H57_War_Memorial_Fiber_Project\68H57_US_150_Fiber_12-2-23.dgn

* FAP 317A
FAU 6675

NOT TO SCALE

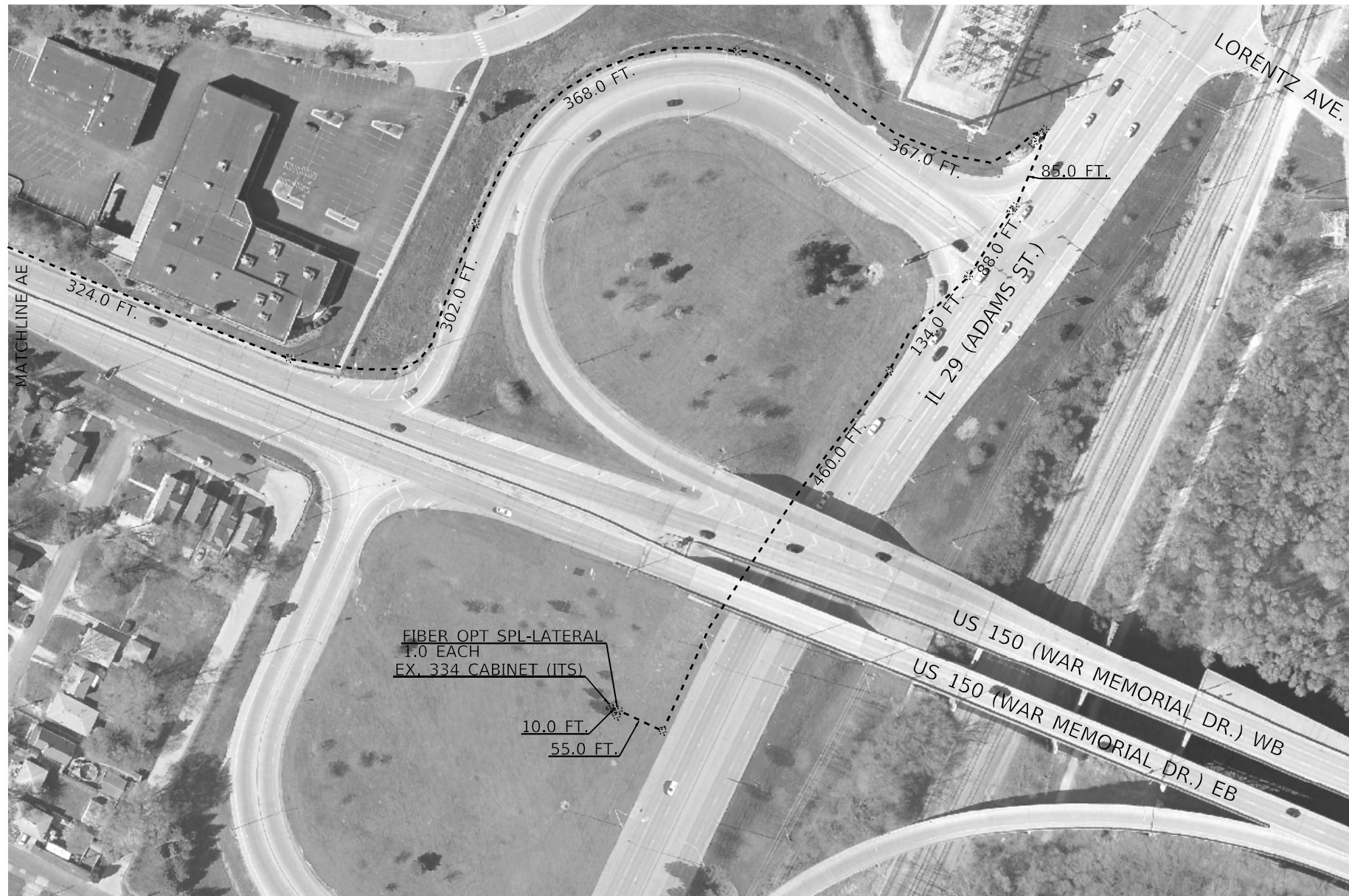
USER NAME = Trevor.Hanson	DESIGNED -	REVISED -
	DRAWN -	REVISED -
PLOT SCALE = 151,0849 ' / in.	CHECKED -	REVISED -
PLOT DATE = 2/8/2023	DATE -	REVISED -

STATE OF ILLINOIS
DEPARTMENT OF TRANSPORTATION

PROPOSED FIBER OPTIC INSTALLATION ALONG US 150
EAST OF HARVARD AVE/RUPPMAN PLAZA - PEORIA

SCALE: SHEET OF SHEETS STA. TO STA.

F.A. RTE.	SECTION	COUNTY	TOTAL SHEETS	SHEET NO.
*	D4 ITS SYSTEM 2023-2	PEORIA	23	19
			CONTRACT NO. 68H57	
		ILLINOIS	FED. AID PROJECT	



BILL OF MATERIALS - SHEET 19		
ITEM DESCRIPTION	UNIT	QTY.
FIBER OPTIC SPLICE-LATERAL	EACH	1.0
FIBER OPTIC CABLE IN CONDUIT, 96 FIBERS, SINGLE MODE	FOOT	2783.0

FIBER OPT SPL-LATERAL
1.0 EACH
EX. 334 CABINET (ITS)

MODEL: Default
 FILE NAME: S:\CEN\WV\ORD\DESIGN\AN\Hanson_68H57_War_Memorial_Fiber_Project\68H57_US_150_Fiber_02-23-23.dgn

* FAP 317A
FAU 6675

NOT TO SCALE

USER NAME = Trevor.Hanson	DESIGNED -	REVISED -
PLOT SCALE = 151,0849 ' / in.	DRAWN -	REVISED -
PLOT DATE = 2/8/2023	CHECKED -	REVISED -
	DATE -	REVISED -

**STATE OF ILLINOIS
DEPARTMENT OF TRANSPORTATION**

**PROPOSED FIBER OPTIC INSTALLATION ALONG US 150
AT IL 29 INTERCHANGE - PEORIA**

SCALE: SHEET OF SHEETS STA. TO STA.

F.A. RTE.	SECTION	COUNTY	TOTAL SHEETS	SHEET NO.
*	D4 ITS SYSTEM 2023-2	PEORIA	23	20
CONTRACT NO. 68H57				
ILLINOIS FED. AID PROJECT				

Fiber Termination Diagram - Blue and Orange Buffer Tubes

Location		IL 29 Adams St.	US 150 (War Dr.) & Prospect	US 150 (War Dr.) & IL 40 (Knoxville)	US 150 (War Dr.) & University	US 150 (War Dr.) & Glen/Sterling	US 150 (War Dr.) & Allen	US 150 (War Dr.) & Big Hollow/Willow Knolls	US 150 (War Dr.) & IL 91/Summershade	US 150 & Koerner/Trigger			
Cabinet Type	Strand Color	Ex. Type 334 ITS Cabinet	Ex. Traffic Signal Cabinet	Ex. Traffic Signal Cabinet	Ex. Traffic Signal Cabinet	Ex. Traffic Signal Cabinet	Ex. Traffic Signal Cabinet	Ex. Traffic Signal Cabinet	Ex. Traffic Signal Cabinet	Ex. Traffic Signal Cabinet			
Blue Buffer Tube	Blue	Terminate with ST Connector	Terminate Strands In/Out with ST Connectors	Continuous	Continuous	Continuous	Continuous	Continuous	Continuous	Continuous	Terminate with ST Connector		
	Orange	Terminate with ST Connector	Terminate Strands In/Out with ST Connectors	Continuous	Continuous	Continuous	Continuous	Continuous	Continuous	Continuous	Continuous	Terminate with ST Connector	
	Green	Terminate with ST Connector	Terminate Strands In/Out with ST Connectors	Continuous	Continuous	Continuous	Continuous	Continuous	Continuous	Continuous	Continuous	Terminate with ST Connector	
	Brown	Terminate with ST Connector	Continuous	Terminate Strands In/Out with ST Connectors	Continuous	Continuous	Continuous	Continuous	Continuous	Continuous	Continuous	Terminate with ST Connector	
	Slate	Terminate with ST Connector	Continuous	Terminate Strands In/Out with ST Connectors	Continuous	Continuous	Continuous	Continuous	Continuous	Continuous	Continuous	Terminate with ST Connector	
	White	Terminate with ST Connector	Continuous	Terminate Strands In/Out with ST Connectors	Continuous	Continuous	Continuous	Continuous	Continuous	Continuous	Continuous	Terminate with ST Connector	
	Red	Terminate with ST Connector	Continuous	Continuous	Continuous	Terminate Strands In/Out with ST Connectors	Continuous	Continuous	Continuous	Continuous	Continuous	Terminate with ST Connector	
	Black	Terminate with ST Connector	Continuous	Continuous	Continuous	Terminate Strands In/Out with ST Connectors	Continuous	Continuous	Continuous	Continuous	Continuous	Terminate with ST Connector	
	Yellow	Terminate with ST Connector	Continuous	Continuous	Continuous	Terminate Strands In/Out with ST Connectors	Continuous	Continuous	Continuous	Continuous	Continuous	Terminate with ST Connector	
	Violet	Terminate with ST Connector	Continuous	Continuous	Continuous	Continuous	Terminate Strands In/Out with ST Connectors	Continuous	Continuous	Continuous	Continuous	Terminate with ST Connector	
	Rose	Terminate with ST Connector	Continuous	Continuous	Continuous	Continuous	Terminate Strands In/Out with ST Connectors	Continuous	Continuous	Continuous	Continuous	Terminate with ST Connector	
Aqua	Terminate with ST Connector	Continuous	Continuous	Continuous	Continuous	Terminate Strands In/Out with ST Connectors	Continuous	Continuous	Continuous	Continuous	Terminate with ST Connector		
Orange Buffer Tube	Blue	Terminate with ST Connector	Continuous	Continuous	Continuous	Continuous	Continuous	Terminate Strands In/Out with ST Connectors	Continuous	Continuous	Continuous	Terminate with ST Connector	
	Orange	Terminate with ST Connector	Continuous	Continuous	Continuous	Continuous	Continuous	Terminate Strands In/Out with ST Connectors	Continuous	Continuous	Continuous	Terminate with ST Connector	
	Green	Terminate with ST Connector	Continuous	Continuous	Continuous	Continuous	Continuous	Terminate Strands In/Out with ST Connectors	Continuous	Continuous	Continuous	Terminate with ST Connector	
	Brown	Terminate with ST Connector	Continuous	Continuous	Continuous	Continuous	Continuous	Continuous	Terminate Strands In/Out with ST Connectors	Continuous	Continuous	Terminate with ST Connector	
	Slate	Terminate with ST Connector	Continuous	Continuous	Continuous	Continuous	Continuous	Continuous	Terminate Strands In/Out with ST Connectors	Continuous	Continuous	Terminate with ST Connector	
	White	Terminate with ST Connector	Continuous	Continuous	Continuous	Continuous	Continuous	Continuous	Terminate Strands In/Out with ST Connectors	Continuous	Continuous	Terminate with ST Connector	
	Red	Terminate with ST Connector	Continuous	Continuous	Continuous	Continuous	Continuous	Continuous	Continuous	Terminate Strands In/Out with ST Connectors	Continuous	Terminate with ST Connector	
	Black	Terminate with ST Connector	Continuous	Continuous	Continuous	Continuous	Continuous	Continuous	Continuous	Continuous	Continuous	Terminate with ST Connector	
	Yellow	Terminate with ST Connector	Continuous	Continuous	Continuous	Continuous	Continuous	Continuous	Continuous	Continuous	Continuous	Terminate with ST Connector	
	Violet	Terminate with ST Connector	Terminate Strands In/Out with ST Connectors	Terminate Strands In/Out with ST Connectors	Terminate Strands In/Out with ST Connectors	Terminate Strands In/Out with ST Connectors	Terminate Strands In/Out with ST Connectors	Terminate Strands In/Out with ST Connectors	Terminate Strands In/Out with ST Connectors	Terminate Strands In/Out with ST Connectors	Terminate Strands In/Out with ST Connectors	Terminate Strands In/Out with ST Connectors	Terminate with ST Connector
	Rose	Terminate with ST Connector	Terminate Strands In/Out with ST Connectors	Terminate Strands In/Out with ST Connectors	Terminate Strands In/Out with ST Connectors	Terminate Strands In/Out with ST Connectors	Terminate Strands In/Out with ST Connectors	Terminate Strands In/Out with ST Connectors	Terminate Strands In/Out with ST Connectors	Terminate Strands In/Out with ST Connectors	Terminate Strands In/Out with ST Connectors	Terminate Strands In/Out with ST Connectors	Terminate with ST Connector
Aqua	Terminate with ST Connector	Terminate Strands In/Out with ST Connectors	Terminate Strands In/Out with ST Connectors	Terminate Strands In/Out with ST Connectors	Terminate Strands In/Out with ST Connectors	Terminate Strands In/Out with ST Connectors	Terminate Strands In/Out with ST Connectors	Terminate Strands In/Out with ST Connectors	Terminate Strands In/Out with ST Connectors	Terminate Strands In/Out with ST Connectors	Terminate Strands In/Out with ST Connectors	Terminate with ST Connector	

MODEL Path: S:\CEN\W\W\ORD\ESP\AN\Hanson# 68H57 War Memorial Fiber Project\68H57_IL_150_Fiber (2-2-23).dgn

* FAP 317A/ FAU 6675

USER NAME = Trevor.Hanson	DESIGNED -	REVISED -
	DRAWN -	REVISED -
PLOT SCALE = 151.0849 ' / in.	CHECKED -	REVISED -
PLOT DATE = 2/8/2023	DATE -	REVISED -

**STATE OF ILLINOIS
DEPARTMENT OF TRANSPORTATION**

FIBER OPTIC TERMINATION DIAGRAM

SCALE: SHEET OF SHEETS STA. TO STA.

F.A. RTE.	SECTION	COUNTY	TOTAL SHEETS	SHEET NO.
*	D4 ITS SYSTEM 2023-2	PEORIA	23	21
CONTRACT NO. 68H57				
ILLINOIS FED. AID PROJECT				

Fiber Termination Diagram - Green and Brown Buffer Tubes

Location		IL 29 Adams St.	US 150 (War Dr.) & Prospect	US 150 (War Dr.) & IL 40 (Knoxville)	US 150 (War Dr.) & University	US 150 (War Dr.) & Glen/Sterling	US 150 (War Dr.) & Allen	US 150 (War Dr.) & Big Hollow/Willow Knolls	US 150 (War Dr.) & IL 91/Summershade	US 150 & Koerner/Trigger	
Cabinet Type	Strand Color	Ex. Type 334 ITS Cabinet	Ex. Traffic Signal Cabinet	Ex. Traffic Signal Cabinet	Ex. Traffic Signal Cabinet	Ex. Traffic Signal Cabinet	Ex. Traffic Signal Cabinet	Ex. Traffic Signal Cabinet	Ex. Traffic Signal Cabinet	Ex. Traffic Signal Cabinet	
Green Buffer Tube	Blue	Terminate with ST Connector	Continuous	Continuous	Continuous	Continuous	Continuous	Continuous	Continuous	Terminate with ST Connector	
	Orange	Terminate with ST Connector	Continuous	Continuous	Continuous	Continuous	Continuous	Continuous	Continuous	Terminate with ST Connector	
	Green	Terminate with ST Connector	Continuous	Continuous	Continuous	Continuous	Continuous	Continuous	Continuous	Terminate with ST Connector	
	Brown	Terminate with ST Connector	Continuous	Continuous	Continuous	Continuous	Continuous	Continuous	Continuous	Terminate with ST Connector	
	Slate	Terminate with ST Connector	Continuous	Continuous	Continuous	Continuous	Continuous	Continuous	Continuous	Terminate with ST Connector	
	White	Terminate with ST Connector	Continuous	Continuous	Continuous	Continuous	Continuous	Continuous	Continuous	Terminate with ST Connector	
	Red	Terminate with ST Connector	Continuous	Continuous	Continuous	Continuous	Continuous	Continuous	Continuous	Terminate with ST Connector	
	Black	Terminate with ST Connector	Continuous	Continuous	Continuous	Continuous	Continuous	Continuous	Continuous	Terminate with ST Connector	
	Yellow	Terminate with ST Connector	Continuous	Continuous	Continuous	Continuous	Continuous	Continuous	Continuous	Terminate with ST Connector	
	Violet	Terminate with ST Connector	Continuous	Continuous	Continuous	Continuous	Continuous	Continuous	Continuous	Terminate with ST Connector	
	Rose	Terminate with ST Connector	Continuous	Continuous	Continuous	Continuous	Continuous	Continuous	Continuous	Terminate with ST Connector	
Aqua	Terminate with ST Connector	Continuous	Continuous	Continuous	Continuous	Continuous	Continuous	Continuous	Continuous	Terminate with ST Connector	
Brown Buffer Tube	Blue	Terminate with ST Connector	Continuous	Continuous	Continuous	Continuous	Continuous	Continuous	Continuous	Continuous	Terminate with ST Connector
	Orange	Terminate with ST Connector	Continuous	Continuous	Continuous	Continuous	Continuous	Continuous	Continuous	Continuous	Terminate with ST Connector
	Green	Terminate with ST Connector	Continuous	Continuous	Continuous	Continuous	Continuous	Continuous	Continuous	Continuous	Terminate with ST Connector
	Brown	Terminate with ST Connector	Continuous	Continuous	Continuous	Continuous	Continuous	Continuous	Continuous	Continuous	Terminate with ST Connector
	Slate	Terminate with ST Connector	Continuous	Continuous	Continuous	Continuous	Continuous	Continuous	Continuous	Continuous	Terminate with ST Connector
	White	Terminate with ST Connector	Continuous	Continuous	Continuous	Continuous	Continuous	Continuous	Continuous	Continuous	Terminate with ST Connector
	Red	Terminate with ST Connector	Continuous	Continuous	Continuous	Continuous	Continuous	Continuous	Continuous	Continuous	Terminate with ST Connector
	Black	Terminate with ST Connector	Continuous	Continuous	Continuous	Continuous	Continuous	Continuous	Continuous	Continuous	Terminate with ST Connector
	Yellow	Terminate with ST Connector	Continuous	Continuous	Continuous	Continuous	Continuous	Continuous	Continuous	Continuous	Terminate with ST Connector
	Violet	Terminate with ST Connector	Continuous	Continuous	Continuous	Continuous	Continuous	Continuous	Continuous	Continuous	Terminate with ST Connector
	Rose	Terminate with ST Connector	Continuous	Continuous	Continuous	Continuous	Continuous	Continuous	Continuous	Continuous	Terminate with ST Connector
Aqua	Terminate with ST Connector	Continuous	Continuous	Continuous	Continuous	Continuous	Continuous	Continuous	Continuous	Terminate with ST Connector	

MODEL Path: \\S:\CEN\W\W\ORD\SP\AN\Hanson# 68H57 War Memorial Fiber Project\68H57_US_150_Fiber (2-2-23).dgn
FILE NAME: S:\CEN\W\W\ORD\SP\AN\Hanson# 68H57 War Memorial Fiber Project\68H57_US_150_Fiber (2-2-23).dgn

* FAP 317A
FAU 6675

USER NAME = Trevor.Hanson	DESIGNED -	REVISED -
	DRAWN -	REVISED -
PLOT SCALE = 151,0849 ' / in.	CHECKED -	REVISED -
PLOT DATE = 2/8/2023	DATE -	REVISED -

**STATE OF ILLINOIS
DEPARTMENT OF TRANSPORTATION**

FIBER OPTIC TERMINATION DIAGRAM - CONTINUED

SCALE: SHEET OF SHEETS STA. TO STA.

F.A. RTE.	SECTION	COUNTY	TOTAL SHEETS	SHEET NO.
*	D4 ITS SYSTEM 2023-2	PEORIA	23	22
CONTRACT NO. 68H57			ILLINOIS FED. AID PROJECT	

FIBER OPTIC CABLE TERMINATION NOTES (SINGLE MODE CABLE)

1. THE PROPOSED FIBER OPTIC CABLE SHALL BE TERMINATED AS SHOWN ON THE FIBER OPTIC LINE/ TERMINATION DIAGRAM WITH ST CONNECTORS.
2. ALL FIBERS SHALL BE LATERALLY SPLICED AT THE TRAFFIC SIGNAL CABNETS. INDIVIDUAL BUFFER TUBES SHALL BE LEFT INTACT AND THE CONTRACTOR SHALL INSTALL THE FIBER OPTIC CABLE IN A MANNER TO MINIMIZE THE NUMBER OF MAINLINE SPLICES.
3. ALL CABLE SPLICES AND TERMINATIONS SHALL BE FUSION SPLICED.
4. THE CONTRACTOR SHALL FURNISH AND INSTALL ALL ITEMS REQUIRED FOR FIBER OPTIC CABLE TERMINATION, INCLUDING, BUT NOT LIMITED TO, BREAKOUT KITS, FANOUT KITS, ENCLOSURES, WEATHERPROOF SPLICE BOOTS, SPLICE SLEEVES, CONNECTORS, INTERCONNECT CENTERS, ETC.
5. ALL ST CONNECTORS SHALL BE FUSION SPLICED UTILIZING PRE-FORMED CABLES WITH CONNECTORS THAT ARE FUSION SPLICED TO THE PROPOSED FIBER.
6. ALL LABOR, MATERIALS, AND EQUIPMENT REQUIRED TO COMPLY WITH THESE REQUIREMENTS SHALL BE INCLUDED IN THE BID PRICE FOR THE PROPOSED FIBER OPTIC CABLE. THERE WILL BE NO ADDITIONAL COMPENSATION FOR THIS WORK.

MODEL: D:\p\h\h
 FILE NAME: S:\CEN\W\W\ORD\DESIGN\AN\Hanson# 68H57 War Memorial Fiber Project\68H57_US_150_Fiber (2-27-23).dgn

* FAP 317A
FAU 6675

NOT TO SCALE

USER NAME = erik.howald	DESIGNED -	REVISED -	STATE OF ILLINOIS DEPARTMENT OF TRANSPORTATION	FIBER OPTIC TERMINATION NOTES		F.A. RTE.	SECTION	COUNTY	TOTAL SHEETS	SHEET NO.
PLOT SCALE = 151,0849 ' / in.	DRAWN -	REVISED -				*	D4 ITS SYSTEM 2023-2	PEORIA	23	23
PLOT DATE = 2/9/2023	CHECKED -	REVISED -		SCALE: SHEET OF SHEETS STA. TO STA.		CONTRACT NO. 68H57				
	DATE -	REVISED -		ILLINOIS FED. AID PROJECT						