

STATE OF ILLINOIS
DEPARTMENT OF TRANSPORTATION

F.A. RTE.	SECTION	COUNTY	TOTAL SHEETS	SHEET NO.
	D5 PARKING LOT 2023-1	EDGAR	20	1
		ILLINOIS	CONTRACT NO. 70E29	

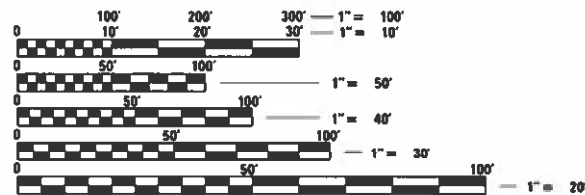
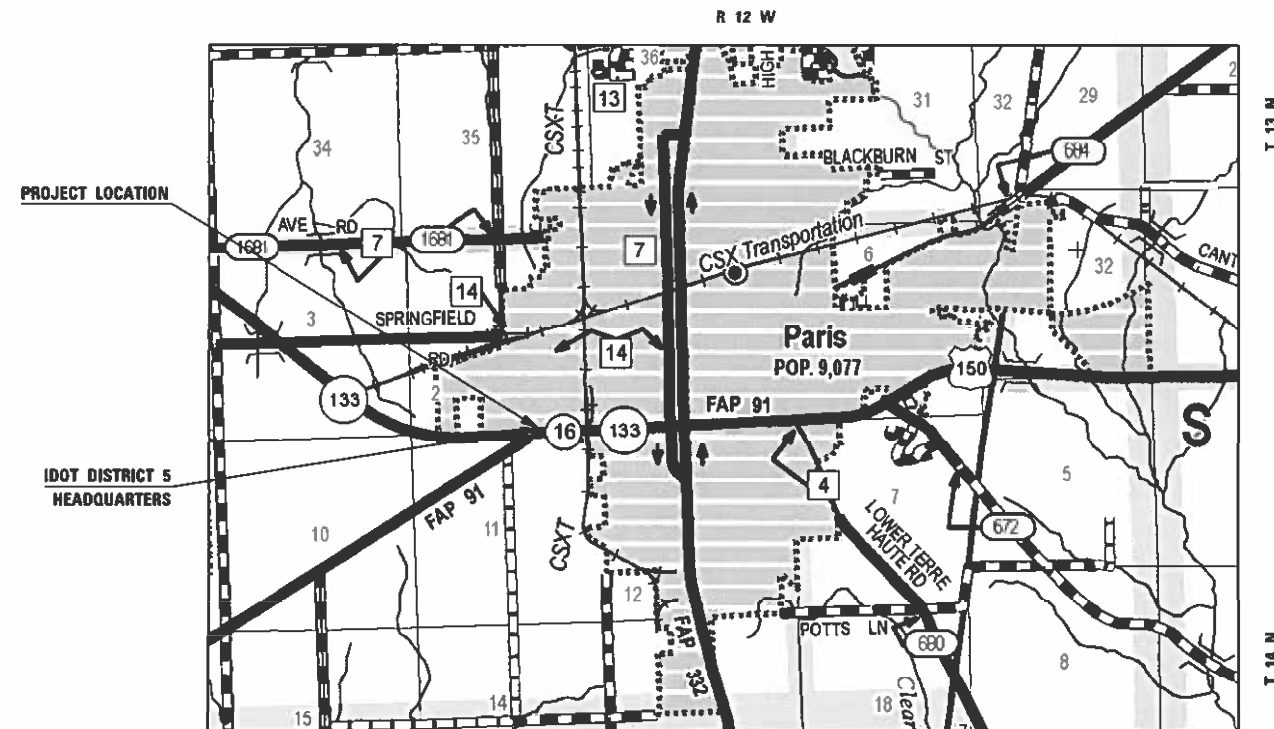
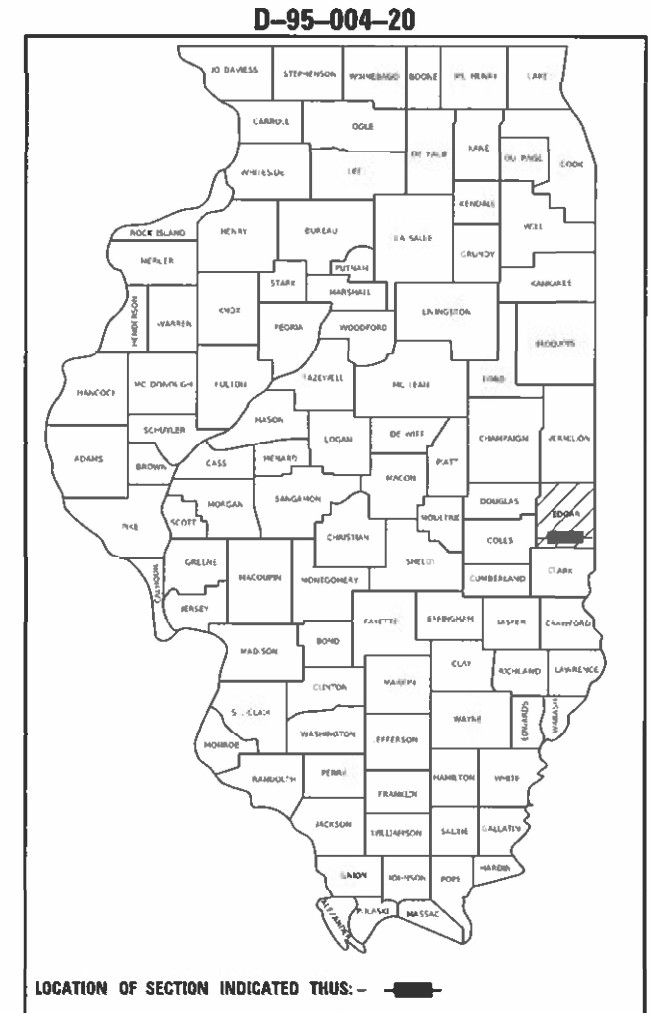
FOR INDEX OF SHEETS, SEE SHEET NO. 2
FOR SUMMARY OF QUANTITIES, SEE SHEET NOS. 3-5

PROPOSED HIGHWAY PLANS

ROUTE (PARIS HEADQUARTERS PARKING LOT)
SECTION D5 PARKING LOT 2023-1
PARKING IMPROVEMENT
EDGAR COUNTY

WEST PARKING LOT AT PARIS HEADQUARTERS

C-95-010-20



FULL SIZE PLANS HAVE BEEN PREPARED USING STANDARD ENGINEERING SCALES. REDUCED SIZED PLANS WILL NOT CONFORM TO STANDARD SCALES. IN MAKING MEASUREMENTS ON REDUCED PLANS, THE ABOVE SCALES MAY BE USED.

J.U.L.I.E.
JOINT UTILITY LOCATION INFORMATION FOR EXCAVATORS
1-800-892-0123
OR 811
PARIS TOWNSHIP



PROJECT ENGINEER: JASON STULTS, PE
SQUAD LEADER: JASON GOBLE
PHONE: (217) 465-4181
CONTRACT NO. 70E29

STATE OF ILLINOIS
DEPARTMENT OF TRANSPORTATION

SUBMITTED 2/2 2023
Kenala Barnett REGIONAL ENGINEER
March 24, 2023
SEA ENGINEER OF DESIGN AND ENVIRONMENT
March 24, 2023
Stephen M. Lewis DIRECTOR OF HIGHWAYS PROJECT IMPLEMENTATION

PRINTED BY THE AUTHORITY
OF THE STATE OF ILLINOIS

SUMMARY OF QUANTITIES

LOCATION OF WORK: PARIS HEADQUARTERS COMPLEX
 WEST PARKING LOT
 URBAN
 COUNTY: EDGAR
 FUNDING BREAKOUT: STATE 100%
 CONSTRUCTION TYPE CODE: 0005

	CODE NO.	ITEM	UNIT	TOTAL QUANTITY
	25000210	SEEDING, CLASS 2A	ACRE	0.25
	25000400	NITROGEN FERTILIZER NUTRIENT	POUND	23.0
	25000500	PHOSPHORUS FERTILIZER NUTRIENT	POUND	23.0
	25000600	POTASSIUM FERTILIZER NUTRIENT	POUND	23.0
	25100115	MULCH, METHOD 2	ACRE	0.25
	28000250	TEMPORARY EROSION CONTROL SEEDING	POUND	25.0
	40600290	BITUMINOUS MATERIALS (TACK COAT)	POUND	4790.0
	40604150	POLYMERIZED HOT-MIX ASPHALT SURFACE COURSE, IL-9.5, MIX "C", N50	TON	1,200.0
	42400200	PORTLAND CEMENT CONCRETE SIDEWALK 5 INCH	SQ FT	1,120.0
	* 42400800	DETECTABLE WARNINGS	SQ FT	17.0
	44000157	HOT-MIX ASPHALT SURFACE REMOVAL, 2"	SQ YD	10,640.0
	44000500	COMBINATION CURB AND GUTTER REMOVAL	FOOT	283.0
	44000600	SIDEWALK REMOVAL	SQ FT	1,120.0
	44003510	MEDIAN REMOVAL PARTIAL DEPTH	SQ FT	1,900.0
	* SPECIALTY ITEM			

MODEL: \\MODELNAME\F
 FILE: \\MODELNAME\F

USER NAME = Jason.Goble	DESIGNED - JRG	REVISED -
	DRAWN - JRG	REVISED -
PLOT SCALE = 40.0000' / in.	CHECKED -	REVISED -
PLOT DATE = 2/2/2023	DATE -	REVISED -

**STATE OF ILLINOIS
DEPARTMENT OF TRANSPORTATION**

SUMMARY OF QUANTITIES

SCALE: NTS SHEET 1 OF 3 SHEETS STA. TO STA.

F.A. RTE.	SECTION	COUNTY	TOTAL SHEETS	SHEET NO.
	D5 PARKING LOT 2023-1	EDGAR	20	3
			CONTRACT NO. 70E29	
ILLINOIS FED. AID PROJECT				

SUMMARY OF QUANTITIES

LOCATION OF WORK: PARIS HEADQUARTERS COMPLEX
 WEST PARKING LOT
 URBAN
 COUNTY: EDGAR
 FUNDING BREAKOUT: STATE 100%
 CONSTRUCTION TYPE CODE: 0005

CODE NO.	ITEM	UNIT	TOTAL QUANTITY
44201717	CLASS D PATCHES, TYPE II, 6 INCH	SQ YD	7.2
44201723	CLASS D PATCHES, TYPE IV, 6 INCH	SQ YD	40.0
60253200	CATCH BASINS TO BE RECONSTRUCTED WITH NEW TYPE 3 FRAME AND GRATE	EACH	1.0
60255700	MANHOLES TO BE ADJUSTED WITH NEW TYPE 1 FRAME, OPEN LID	EACH	1.0
60300350	MANHOLE FRAMES TO BE ADJUSTED	EACH	1.0
60603800	COMBINATION CONCRETE CURB AND GUTTER, TYPE B-6.12	FOOT	283.0
67100100	MOBILIZATION	LSUM	1.0
* 78001100	PAINT PAVEMENT MARKING - LETTERS AND SYMBOLS	SQ FT	71.4
* 78001110	PAINT PAVEMENT MARKING - LINE 4"	FOOT	5,210.0
* 78001180	PAINT PAVEMENT MARKING - LINE 24"	FOOT	101.0
X0301339	REMOVE EXISTING PARKING BLOCKS	EACH	3.0
X7010216	TRAFFIC CONTROL AND PROTECTION, (SPECIAL)	L SUM	1.0
Z0007800	BUMPER BLOCKS	EACH	2.0
Z0010900	COLD MILLING (SPECIAL)	FOOT	2,843.0
* SPECIALTY ITEM			

MODEL: MODELNAME\$
 FILE: NAME\$.DWG
 PLOT DATE: 2/2/2023

USER NAME = Jason.Goble	DESIGNED - JRG	REVISED -
	DRAWN - JRG	REVISED -
PLOT SCALE = 40.0000' / in.	CHECKED -	REVISED -
PLOT DATE = 2/2/2023	DATE -	REVISED -

**STATE OF ILLINOIS
DEPARTMENT OF TRANSPORTATION**

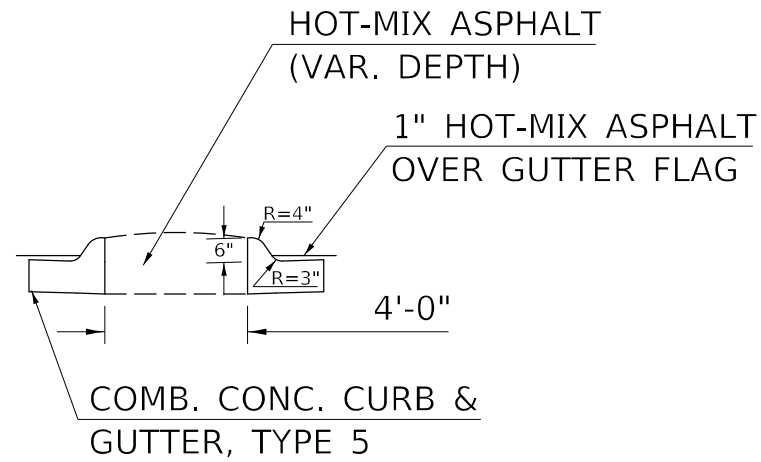
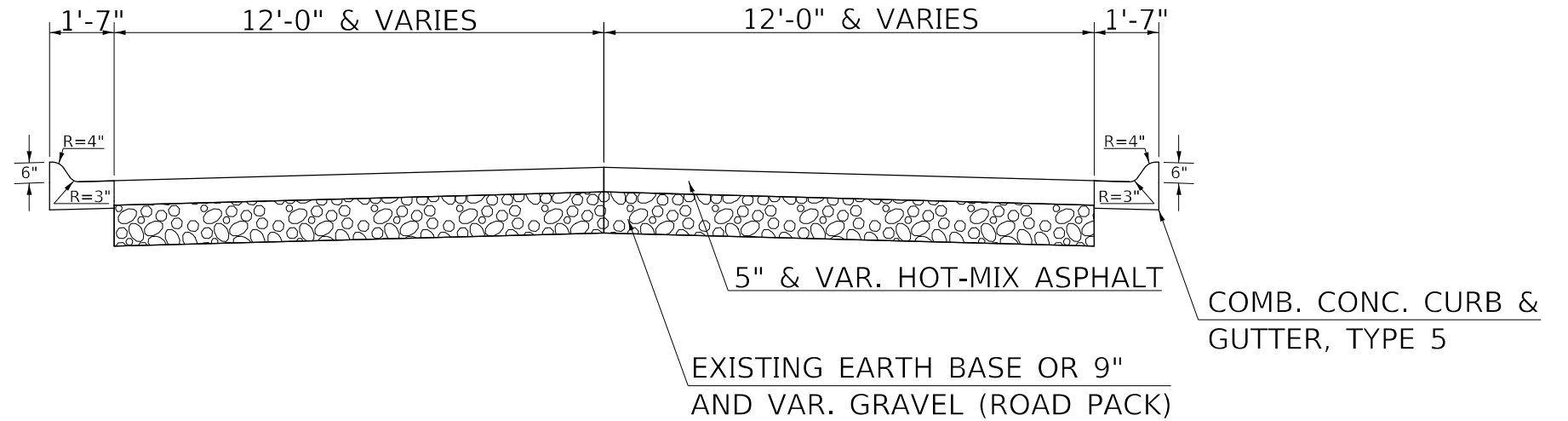
SUMMARY OF QUANTITIES

SCALE: NTS SHEET 2 OF 3 SHEETS STA. TO STA.

F.A. RTE.	SECTION	COUNTY	TOTAL SHEETS	SHEET NO.
	D5 PARKING LOT 2023-1	EDGAR	20	4
			CONTRACT NO. 70E29	
ILLINOIS FED. AID PROJECT				

EXISTING TYPICAL CROSS SECTION

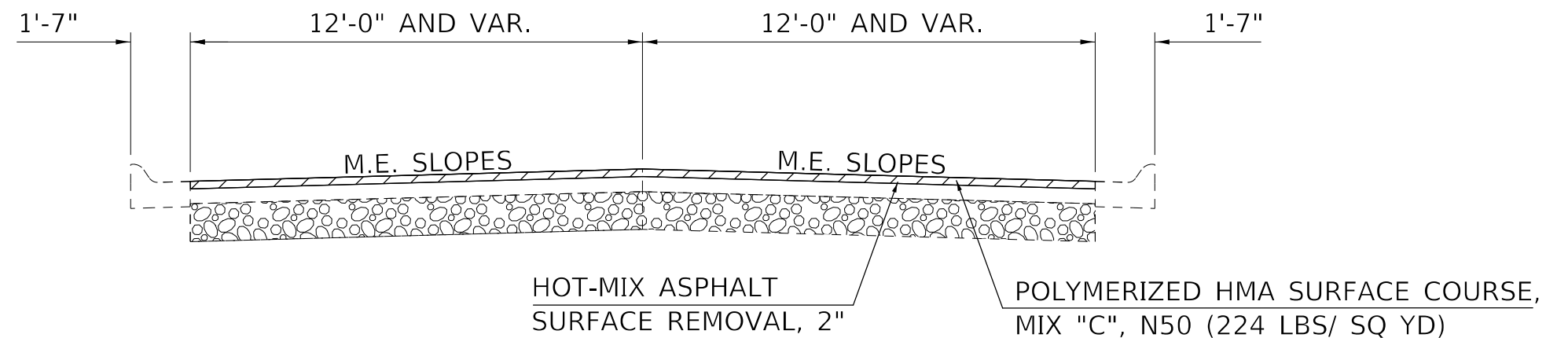
PARIS HEADQUARTERS



EXISTING
LOT MEDIAN DETAIL

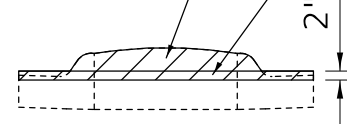
PROPOSED TYPICAL CROSS SECTION

PARIS HEADQUARTERS



P HMA SURFACE COURSE, MIX "C", N50
(224 LBS/ SQ YD)

MEDIAN SURFACE REMOVAL
PARTIAL DEPTH



PROPOSED
LOT MEDIAN DETAIL

MODEL: I:\MODEL\MHMF
FILE: MHMF_Plan\IUCRPA_bentley.com\FWIDOT\Documents\DOT_Offices\DirDir: S:\Project\10570E29\CADD\data\CAD\Sheet\10570E29\sh1\Typical.dgn

USER NAME = Jason.Goble	DESIGNED - JRG	REVISED -
DRAWN - JRG	REVISOR -	
PLOT SCALE = 40,0000 * / in.	CHECKED -	REVISOR -
PLOT DATE = 2/2/2023	DATE -	REVISOR -

STATE OF ILLINOIS
DEPARTMENT OF TRANSPORTATION

TYPICAL CROSS SECTIONS

SCALE: NTS SHEET 1 OF 1 SHEETS STA. TO STA.

F.A. RTE.	SECTION	COUNTY	TOTAL SHEETS	SHEET NO.
	D5 PARKING LOT 2023-1	EDGAR	20	6
ILLINOIS			FED. AID PROJECT	

CONTRACT NO. 70E29

SEEDING SCHEDULE

SECTION	LOCATION	AREA (SQ FT)	25000210 SEEDING CLASS 2A (ACRE)	28000250 TEMPORARY EROSION CONTROL SEEDING 100 LB/ACRE (POUND)	25000400 NITROGEN FERTILIZER NUTRIENT 90 LB / ACRE (POUND)	25000500 PHOSPHORUS FERTILIZER NUTRIENT 90 LB / ACRE (POUND)	25000600 POTASSIUM FERTILIZER NUTRIENT 90 LB / ACRE (POUND)	25100115 MULCH METHOD 2 (ACRE)
B	D5 HEADQUARTERS - (N) PARKING LOT RAMP	200.00	0.005	0.46	0.41	0.41	0.41	0.005
SECTION B SUBTOTAL =			0.005	0.459	0.413	0.413	0.413	0.005
C	D5 HEADQUARTERS - FRONT LOBBY ENTRANCE	1110.00	0.025	2.55	2.29	2.29	2.29	0.025
SECTION C SUBTOTAL =			0.025	2.548	2.293	2.293	2.293	0.025
SUBTOTAL =			0.030	3.007	2.707	2.707	2.707	0.030
PROJECT TOTAL =			0.250	25.00	23.00	23.00	23.00	0.250
			ACRE	POUND	POUND	POUND	POUND	ACRE

MODEL: \\MODEL\MRFS
 FILE: MRFS_Plan\Illinois\bea\com\PIV\DOT\Documents\DOT_Offices\Dir\dir: S:\Project\0570E29\CADD\data\CAD\Sheet\0570E29\sh-seedules.dgn

USER NAME = Jason.Goble	DESIGNED - JRG	REVISED -
	DRAWN - JRG	REVISED -
PLOT SCALE = 40,0000 * / in.	CHECKED -	REVISED -
PLOT DATE = 2/2/2023	DATE -	REVISED -

**STATE OF ILLINOIS
DEPARTMENT OF TRANSPORTATION**

SCHEDULE OF QUANTITIES

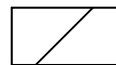
SCALE: NTS SHEET 3 OF 3 SHEETS STA. TO STA.

F.A. RTE.	SECTION	COUNTY	TOTAL SHEETS	SHEET NO.
	D5 PARKING LOT 2023-1	EDGAR	20	9
			CONTRACT NO. 70E29	
			ILLINOIS FED. AID PROJECT	

RESURFACING AREAS



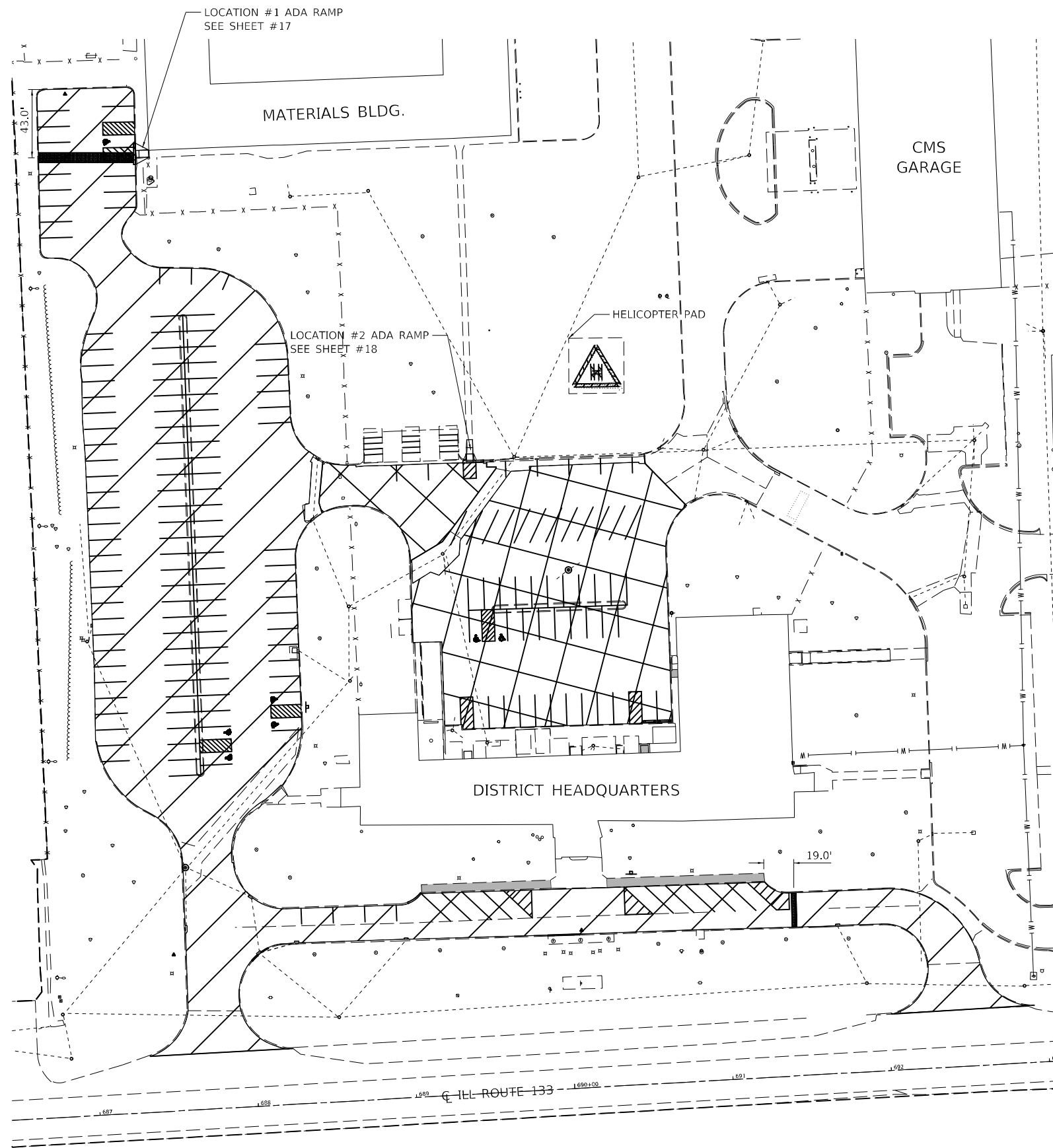
SECTION B



SECTION C



CLASS D PATCHES



MODEL: \\MODEL\MNMF
 FILE: \\MAIL: public\c:\paw\bea\paw.com\PIV\DOT\Documents\DOT Office\District: S\Project\0570E29\CADD\data\CAD\sheet\0570E29\sheet\bar\sheet.dwg

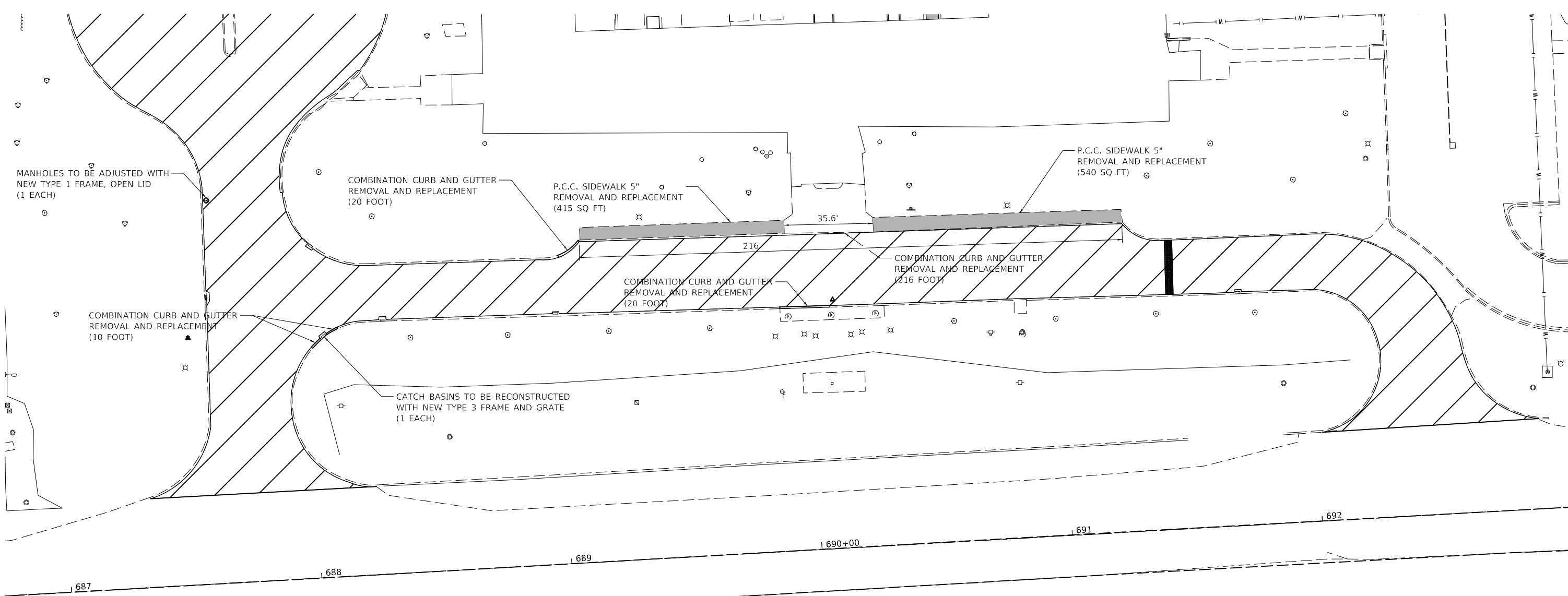
USER NAME = Jason.Goble	DESIGNED - JRG	REVISED -
	DRAWN - JRG	REVISED -
PLOT SCALE = 80,0000 * / in.	CHECKED -	REVISED -
PLOT DATE = 2/2/2023	DATE -	REVISED -

**STATE OF ILLINOIS
DEPARTMENT OF TRANSPORTATION**

PLAN SHEET

SCALE: 1" = 40' SHEET 1 OF 1 SHEETS STA. TO STA.

F.A. RTE.	SECTION	COUNTY	TOTAL SHEETS	SHEET NO.
	D5 PARKING LOT 2023-1	EDGAR	20	10
			CONTRACT NO. 70E29	
ILLINOIS FED. AID PROJECT				



MODEL: \\MODEL\MAME
 FILE: \\MAME: public\paw_bentley.com\PIV\DOT\Documents\DOT_Offices\Dir\dr: S:\Project\70E29\CADD\data\CAD\sheet\70E29\sheet\overallplan.dwg

USER NAME = Jason.Goble	DESIGNED - JRG	REVISED -
DRAWN - JRG	REVISIONS -	
PLOT SCALE = 40,0000 * / in.	CHECKED -	REVISED -
PLOT DATE = 2/2/2023	DATE -	REVISED -

STATE OF ILLINOIS
DEPARTMENT OF TRANSPORTATION

OVERALL PLAN
SECTION C - D5 HEADQUARTERS FRONT LOBBY ENTRANCE
 SCALE: 1" = 20' SHEET 2 OF 3 SHEETS STA. TO STA.

F.A. RTE.	SECTION	COUNTY	TOTAL SHEETS	SHEET NO.
	D5 PARKING LOT 2023-1	EDGAR	20	11
CONTRACT NO. 70E29				
ILLINOIS FED. AID PROJECT				

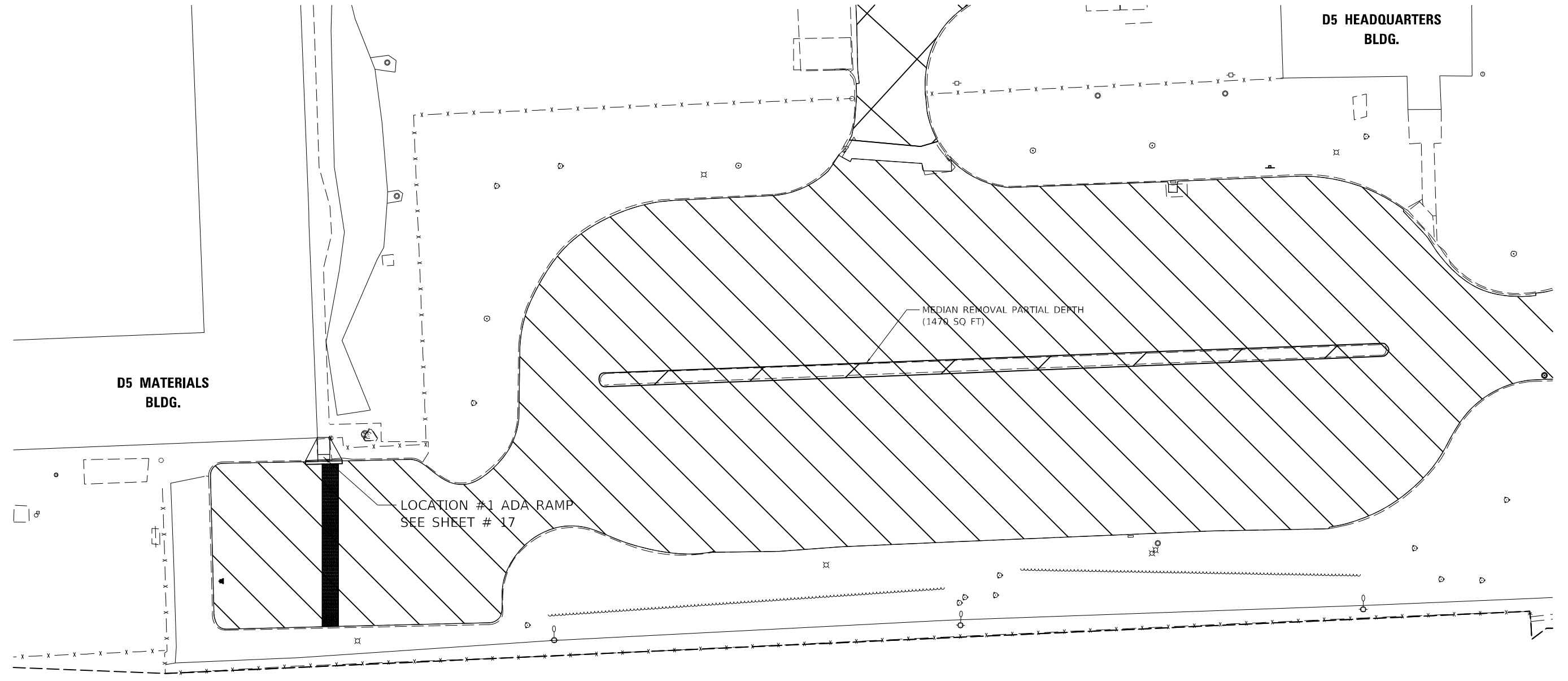


**D5 HEADQUARTERS
BLDG.**

**D5 MATERIALS
BLDG.**

MEDIAN REMOVAL PARTIAL DEPTH
(1470 SQ FT)

LOCATION #1 ADA RAMP
SEE SHEET # 17



MODEL: \\MODEL\MNMF
 FILE: \\MAILS_PUB\Public\paw_bentley.com\FW\DOT\Documents\DOT_Offices\Dir\dir: S:\Project\0570E29\CADD\data\CADD\sheet\0570E29\sheetcover\plan.dwg

USER NAME = Jason,Goble	DESIGNED - JRG	REVISED -
	DRAWN - JRG	REVISED -
PLOT SCALE = 40,0000 * / in.	CHECKED -	REVISED -
PLOT DATE = 2/2/2023	DATE -	REVISED -

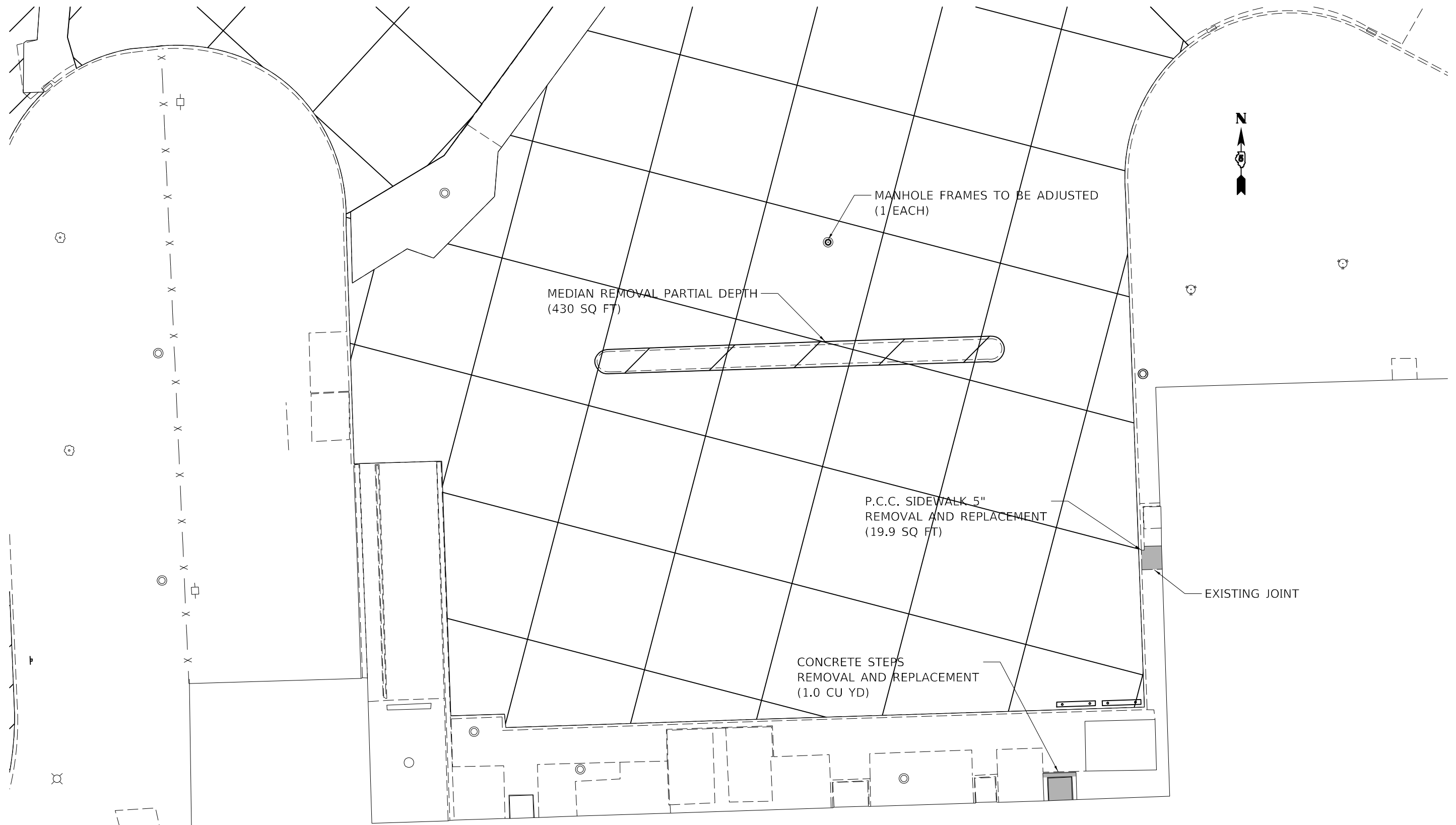
**STATE OF ILLINOIS
DEPARTMENT OF TRANSPORTATION**

**OVERALL PLAN
SECTION C - D5 HEADQUARTERS WEST PARKING LOT**

SCALE: 1" = 20' SHEET 3 OF 3 SHEETS STA. TO STA.

F.A. RTE.	SECTION	COUNTY	TOTAL SHEETS	SHEET NO.
	D5 PARKING LOT 2023-1	EDGAR	20	12
CONTRACT NO. 70E29				
ILLINOIS FED. AID PROJECT				

MODEL: \\MODEL\MNMF
 FILE: \\MAILS_P\public\paw_bentley.com\PIV\DOT\Documents\DOT_Offices\Dir\dir: S:\Project\0570E29\CADD\data\CADD\sheet\0570E29\sheet\overallplan.dwg



D5 HEADQUARTERS BLDG.

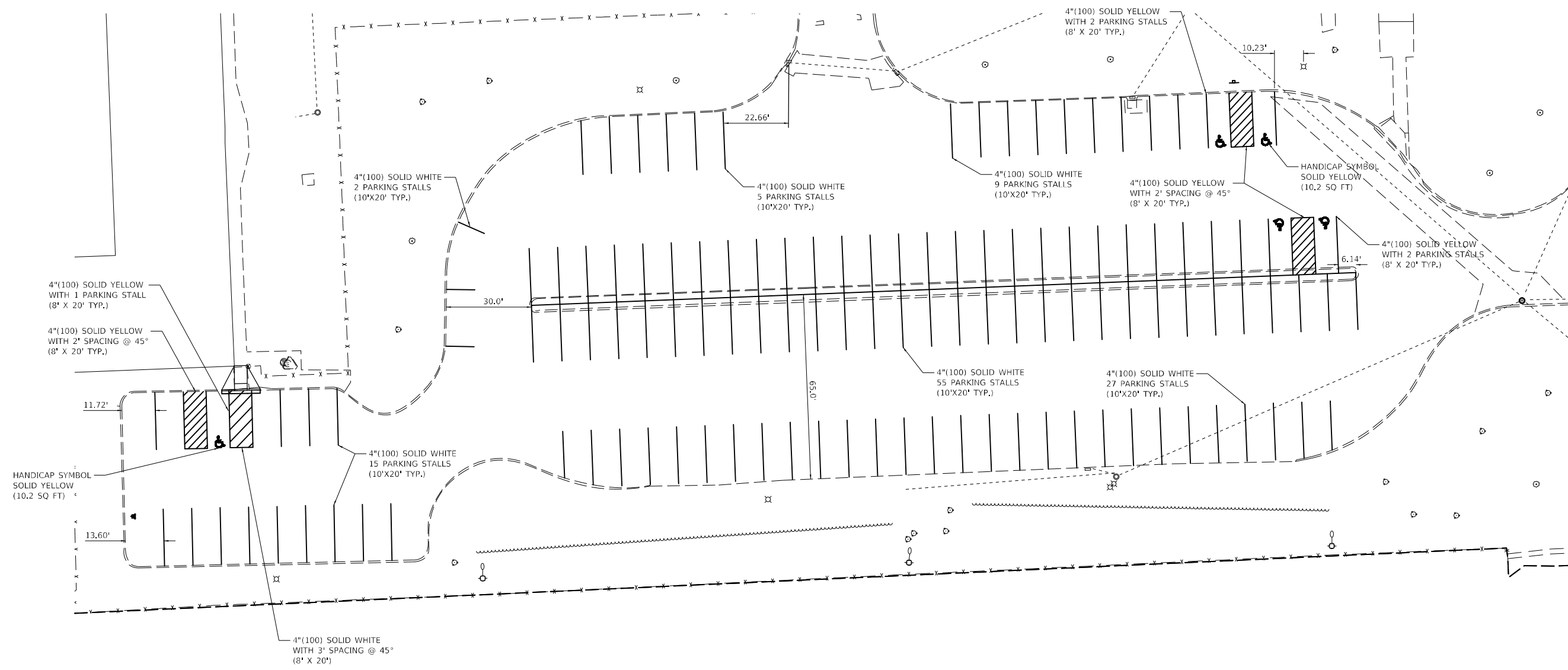
USER NAME = Jason,Goble	DESIGNED - JRG	REVISED -
	DRAWN - JRG	REVISED -
PLOT SCALE = 40,0000 * / in.	CHECKED -	REVISED -
PLOT DATE = 2/2/2023	DATE -	REVISED -

**STATE OF ILLINOIS
 DEPARTMENT OF TRANSPORTATION**

**OVERALL PLAN
 SECTION B - D5 HEADQUARTERS NORTH PARKING LOT**

SCALE: 1" = 10' SHEET 3 OF 3 SHEETS STA. TO STA.

F.A. RTE.	SECTION	COUNTY	TOTAL SHEETS	SHEET NO.
	D5 PARKING LOT 2023-1	EDGAR	20	13
CONTRACT NO. 70E29				
ILLINOIS FED. AID PROJECT				



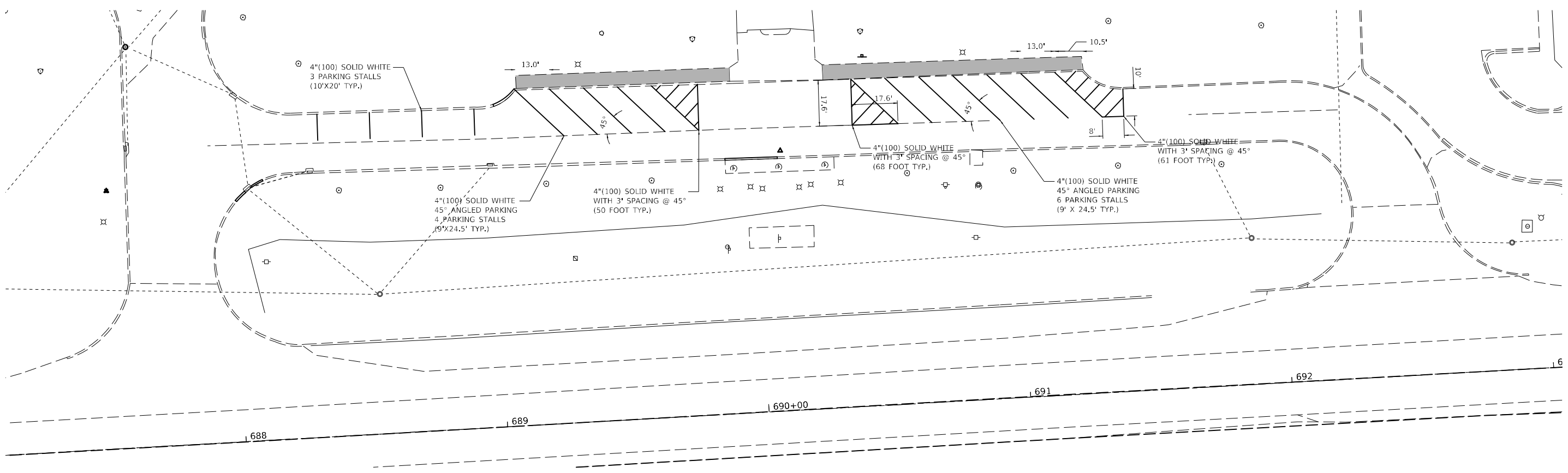
MODEL: \\MODEL\MNMF
 FILE: \\MAILS_P\pub\lucy\pav\lucy.com\PIV\DOT\Documents\DOT_Offices\Dir\dr: S:\Project\0570E29\CADD\data\CADD\sheet\0570E29\sheet-Pavement\lucy.dgn

USER NAME = Jason,Goble	DESIGNED - JRG	REVISED -
DRAWN - JRG	REVISIONS -	
PLOT SCALE = 40,0000 * / in.	CHECKED -	REVISIONS -
PLOT DATE = 2/15/2023	DATE -	REVISIONS -

STATE OF ILLINOIS
DEPARTMENT OF TRANSPORTATION

PAVEMENT MARKING PLAN SHEET
SECTION C - D5 HEADQUARTERS WEST PARKING LOT
 SCALE: 1" = 20' SHEET 1 OF 3 SHEETS STA. TO STA.

F.A. RTE.	SECTION	COUNTY	TOTAL SHEETS	SHEET NO.
	D5 PARKING LOT 2023-1	EDGAR	20	14
CONTRACT NO. 70E29				
ILLINOIS FED. AID PROJECT				



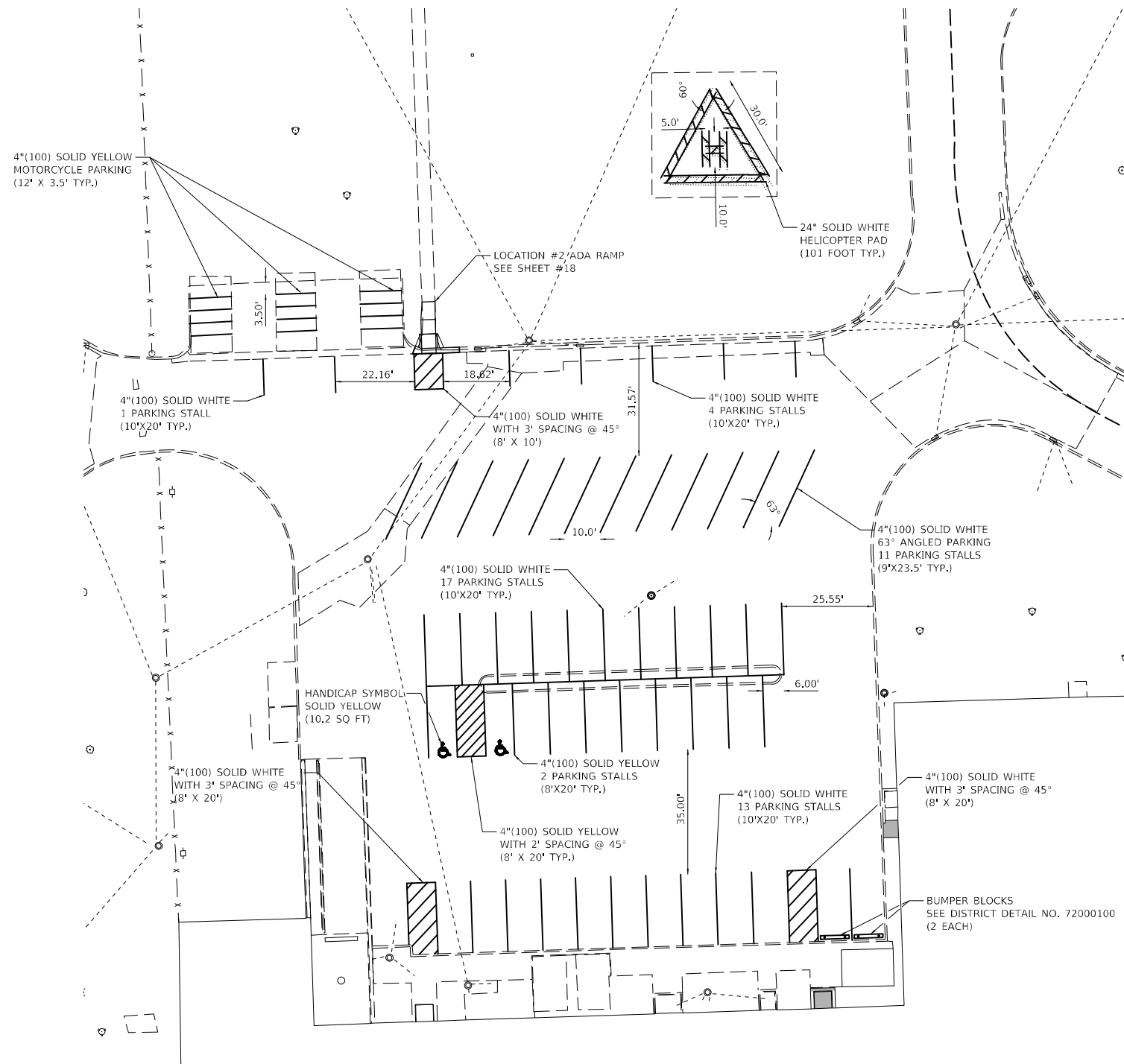
MODEL: \\MODEL\MKMF
 FILE: \\MAILS_P\pub\lucy\paw_bentley.com\PIV\DOT\Documents\DOT_Offices\Dir\dir: S:\Project\10570E29\CADD\data\CADD\sheet\0570E29\sheet-PavementMKMF.dgn

USER NAME = Jason,Goble	DESIGNED - JRG	REVISED -
	DRAWN - JRG	REVISED -
PLOT SCALE = 40,0000 * / in.	CHECKED -	REVISED -
PLOT DATE = 2/2/2023	DATE -	REVISED -

STATE OF ILLINOIS
DEPARTMENT OF TRANSPORTATION

PAVEMENT MARKING PLAN SHEET			
SECTION C - D5 HEADQUARTERS FRONT LOBBY ENTRANCE			
SCALE: 1" = 20'	SHEET 2	OF 3 SHEETS	STA. TO STA.

F.A. RTE.	SECTION	COUNTY	TOTAL SHEETS	SHEET NO.
	D5 PARKING LOT 2023-1	EDGAR	20	15
CONTRACT NO. 70E29				
ILLINOIS FED. AID PROJECT				



MODEL: \\MODEL\MKMF
 FILE: \\MAILS_P\public\paw_bentley.com\PIV\DOT\Documents\DOT_Offices\Dir\dr: S:\Project\10570E29\CADD\data\CADD\sheet\10570E29\sheet-Pavement\mkrg.dgn

USER NAME = Jason.Goble	DESIGNED - JRG	REVISED -
	DRAWN - JRG	REVISED -
PLOT SCALE = 40,0000 * / in.	CHECKED -	REVISED -
PLOT DATE = 2/15/2023	DATE -	REVISED -

STATE OF ILLINOIS
DEPARTMENT OF TRANSPORTATION

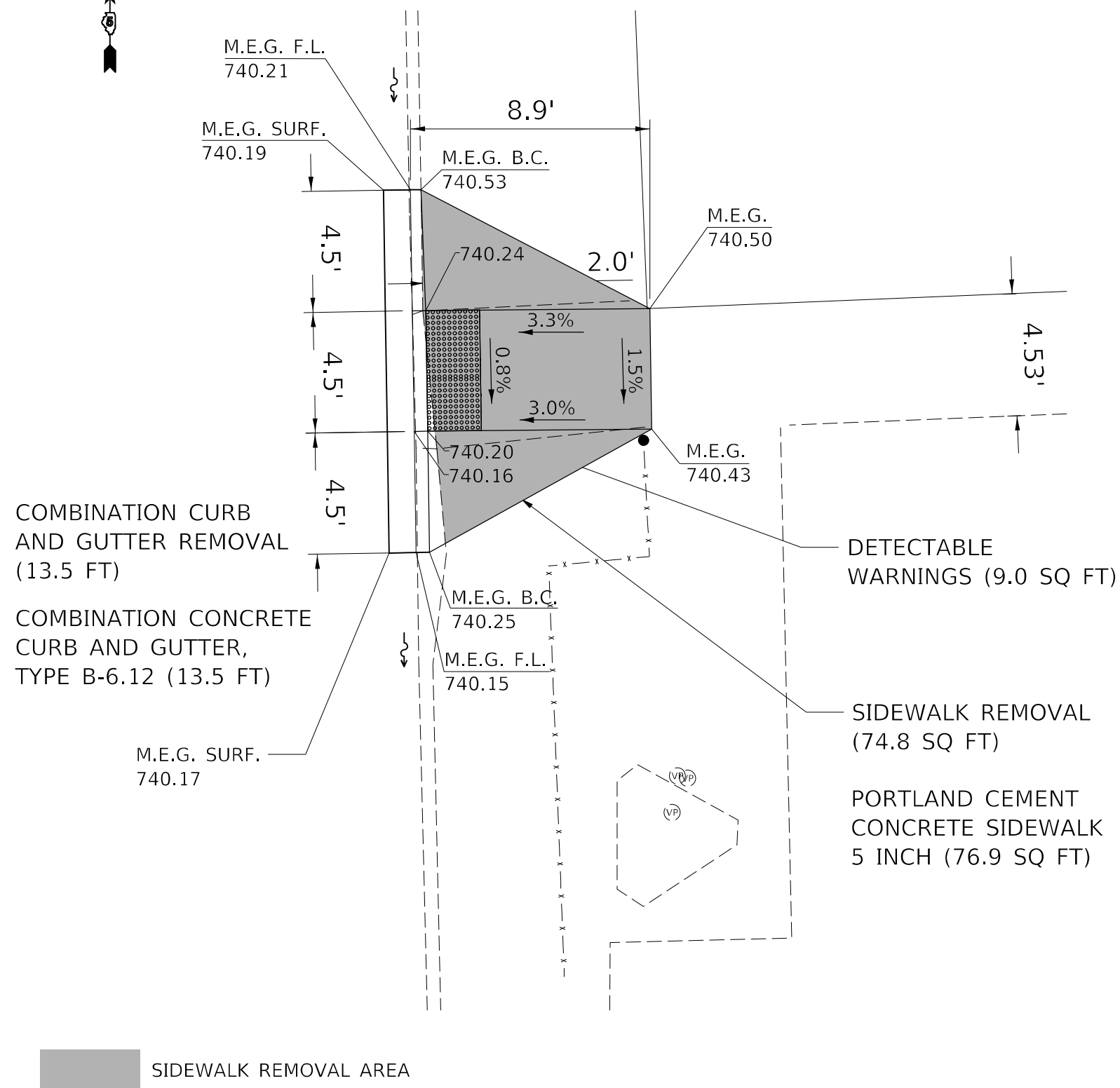
PAVEMENT MARKING PLAN SHEET
SECTION B - D5 HEADQUARTERS NORTH PARKING LOT

SCALE: 1" = 20' SHEET 3 OF 3 SHEETS STA. TO STA.

F.A. RTE.	SECTION	COUNTY	TOTAL SHEETS	SHEET NO.
	D5 PARKING LOT 2023-1	EDGAR	20	16
CONTRACT NO. 70E29				
ILLINOIS FED. AID PROJECT				

LOCATION #1

D5 MATERIALS – WEST ENTRANCE RAMP



- NOTES: (ALL LOCATIONS)**
1. M.E.G. = MATCH EXISTING GRADE
 2. EXISTING CONDITIONS MAY VARY SLIGHTLY IN THE FIELD. THE ENGINEER CAN ADJUST GRADES AND TIE IN LOCATIONS AS NECESSARY TO CONSTRUCT RAMP. ANY ADJUSTMENTS MADE IN THE FIELD SHALL MEET ADA REQUIREMENTS FOR CURB RAMPS.
 3. MAX. ALLOWABLE RUNNING SLOPE OF RAMP = (8.3%), [$<7\%$ PREFERRED]
 4. MAX. ALLOWABLE RUNNING SLOPE OF TURNING SPACE = 1:50 (2%), [$<1.5\%$ PREFERRED]
 5. MIN. ALLOWABLE WIDTH OF RAMP = 4 FT.
 6. MAX. ALLOWABLE CROSS SLOPE OF SIDEWALK LANDING = 1:50 (2%), [1.5% PREFERRED]
 7. AREAS OF DISTURBED EARTH AROUND PEDESTRIAN CURB RAMPS SHALL BE SEEDED, FERTILIZED, MULCHED ACCORDING TO ART. 250.04 AND 251.03(C) AS SOON AS EACH AREA IS PREPARED AS DIRECTED BY THE ENGINEER. THE COST OF THESE ITEMS SHALL BE INCLUDED IN THE COST OF THE VARIOUS RELATED ITEMS AND NO ADDITIONAL COMPENSATION WILL BE ALLOWED.

MODEL: \\MODELS\MAME
 FILE: NAME: p:\pub\caw\be\caw.com\PIV\DOT\Documents\DOT Office\Dir\dr: S:\Project\10570E29\CADD\DATA\CADD\Sheet\10570E29\17-CAD\caw\kld.dwg

USER NAME = Jason.Goble	DESIGNED - JRG	REVISED -
	DRAWN - JRG	REVISED -
PLOT SCALE = 10,0000 * / in.	CHECKED -	REVISED -
PLOT DATE = 2/2/2023	DATE -	REVISED -

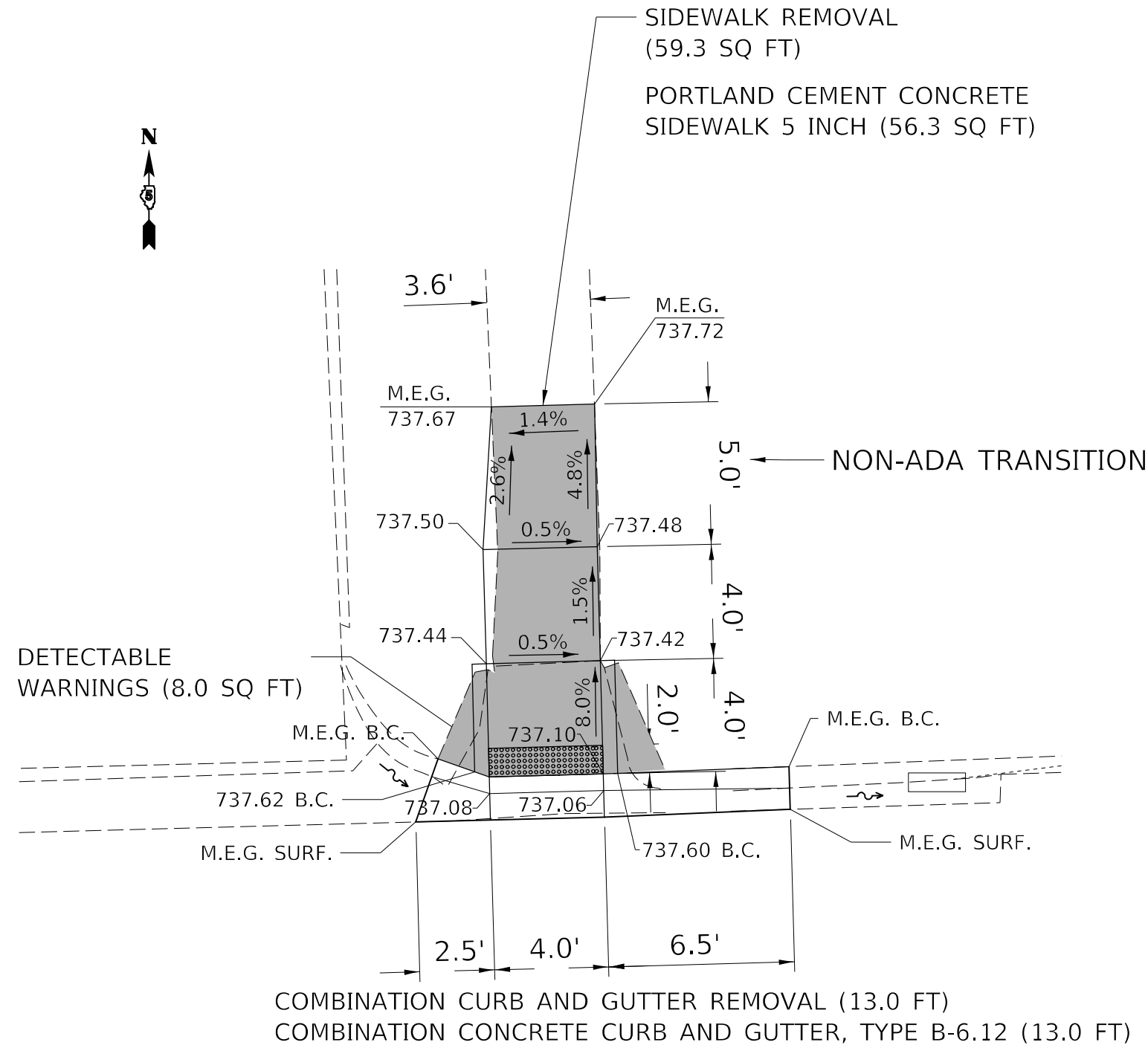
**STATE OF ILLINOIS
DEPARTMENT OF TRANSPORTATION**

**D5 MATERIALS – WEST ENTRANCE RAMP
ADA DETAIL**

SCALE: 1" = 5' SHEET 1 OF 2 SHEETS STA. TO STA.

F.A. RTE.	SECTION	COUNTY	TOTAL SHEETS	SHEET NO.
	D5 PARKING LOT 2023-1	EDGAR	20	17
			CONTRACT NO. 70E29	
ILLINOIS FED. AID PROJECT				

LOCATION #2
D5 HEADQUARTERS – NORTH PARKING LOT RAMP



NOTES: (ALL LOCATIONS)

1. M.E.G. = MATCH EXISTING GRADE
2. EXISTING CONDITIONS MAY VARY SLIGHTLY IN THE FIELD. THE ENGINEER CAN ADJUST GRADES AND TIE IN LOCATIONS AS NECESSARY TO CONSTRUCT RAMP. ANY ADJUSTMENTS MADE IN THE FIELD SHALL MEET ADA REQUIREMENTS FOR CURB RAMPS.
3. MAX. ALLOWABLE RUNNING SLOPE OF RAMP = (8.3%), [$<7\%$ PREFERRED]
4. MAX. ALLOWABLE RUNNING SLOPE OF TURNING SPACE = 1:50 (2%), [$<1.5\%$ PREFERRED]
5. MIN. ALLOWABLE WIDTH OF RAMP = 4 FT.
6. MAX. ALLOWABLE CROSS SLOPE OF SIDEWALK LANDING = 1:50 (2%), [1.5% PREFERRED]
7. AREAS OF DISTURBED EARTH AROUND PEDESTRIAN CURB RAMPS SHALL BE SEEDED, FERTILIZED, MULCHED ACCORDING TO ART. 250.04 AND 251.03(C) AS SOON AS EACH AREA IS PREPARED AS DIRECTED BY THE ENGINEER. THE COST OF THESE ITEMS SHALL BE INCLUDED IN THE COST OF THE VARIOUS RELATED ITEMS AND NO ADDITIONAL COMPENSATION WILL BE ALLOWED.

■ SIDEWALK REMOVAL AREA

MODEL: I:\MODEL\MAME FILE NAME: p:\pub\cadd\paw_bentley.com\p\INDOT\Documents\DOT Office\Dir\drf_5\Project\0570E29\CADD\DATA\CADD\Sheet\0570E29-nh-cad\cadd\kld.dgn

USER NAME = Jason.Goble	DESIGNED - JRG	REVISED -
	DRAWN - JRG	REVISED -
PLOT SCALE = 10,0000 * / in.	CHECKED -	REVISED -
PLOT DATE = 2/2/2023	DATE -	REVISED -

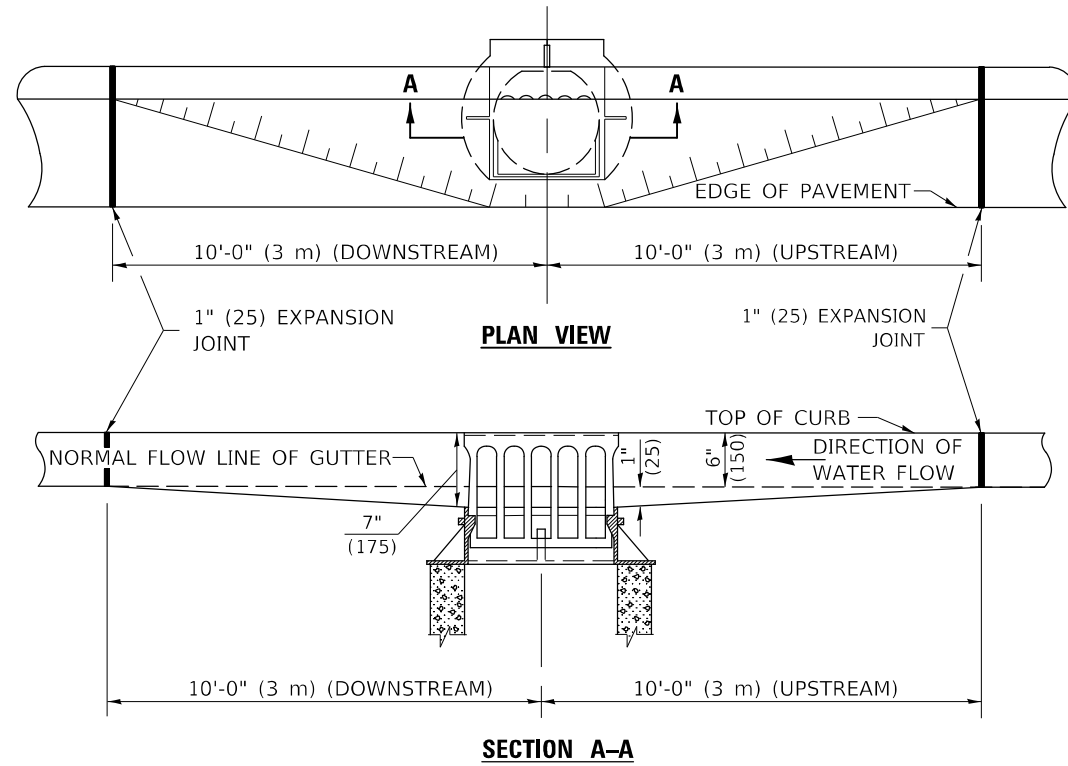
STATE OF ILLINOIS
DEPARTMENT OF TRANSPORTATION

D5 HEADQUARTERS – NORTH PARKING LOT RAMP
ADA DETAIL

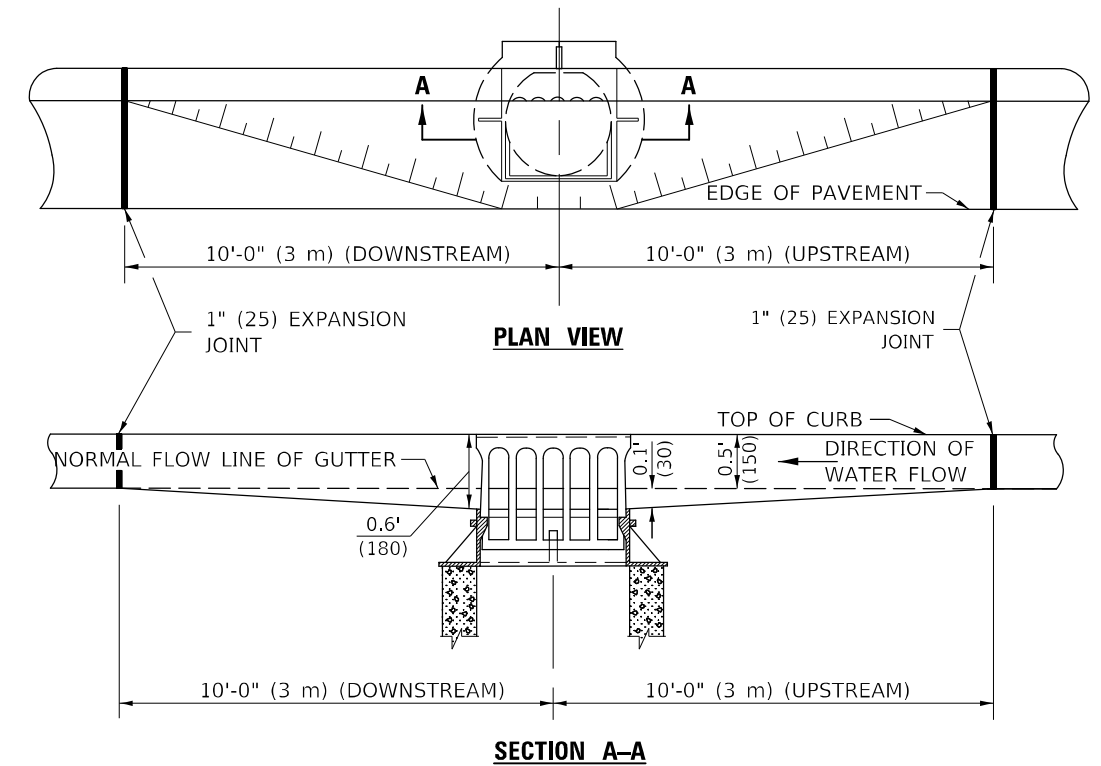
SCALE: 1" = 5' SHEET 2 OF 2 SHEETS STA. TO STA.

F.A. RTE.	SECTION	COUNTY	TOTAL SHEETS	SHEET NO.
	D5 PARKING LOT 2023-1	EDGAR	20	18
			CONTRACT NO. 70E29	
ILLINOIS FED. AID PROJECT				

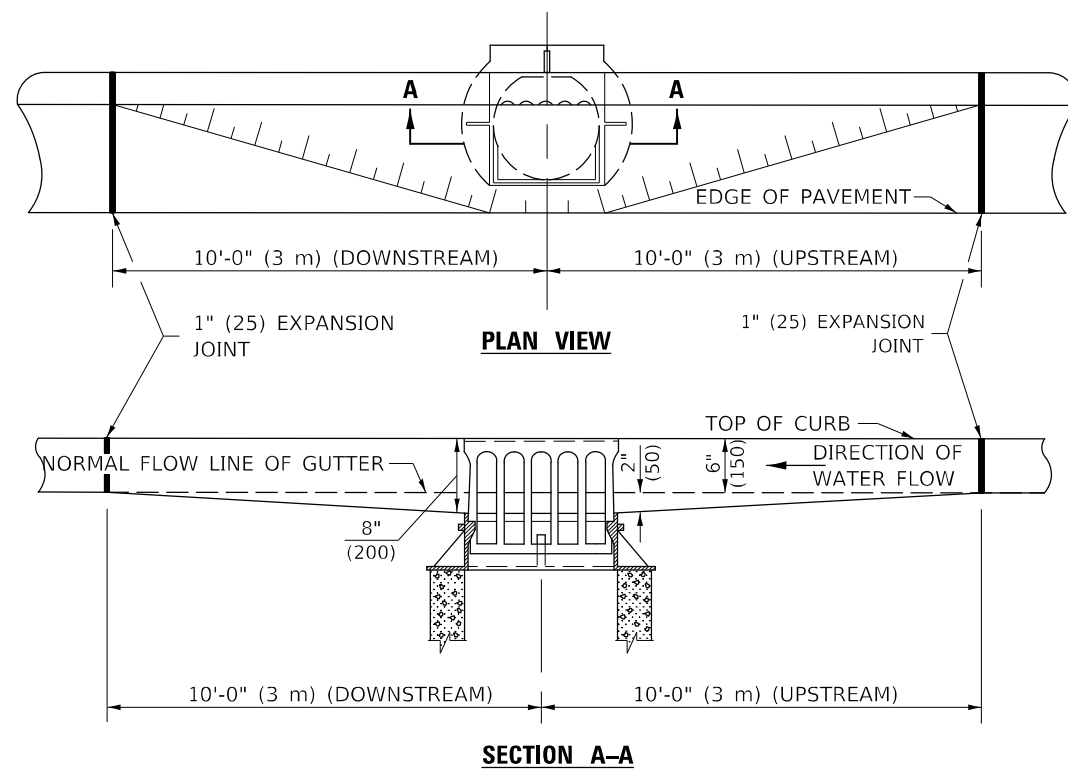
GUTTER DEPRESSION 1" (25mm)



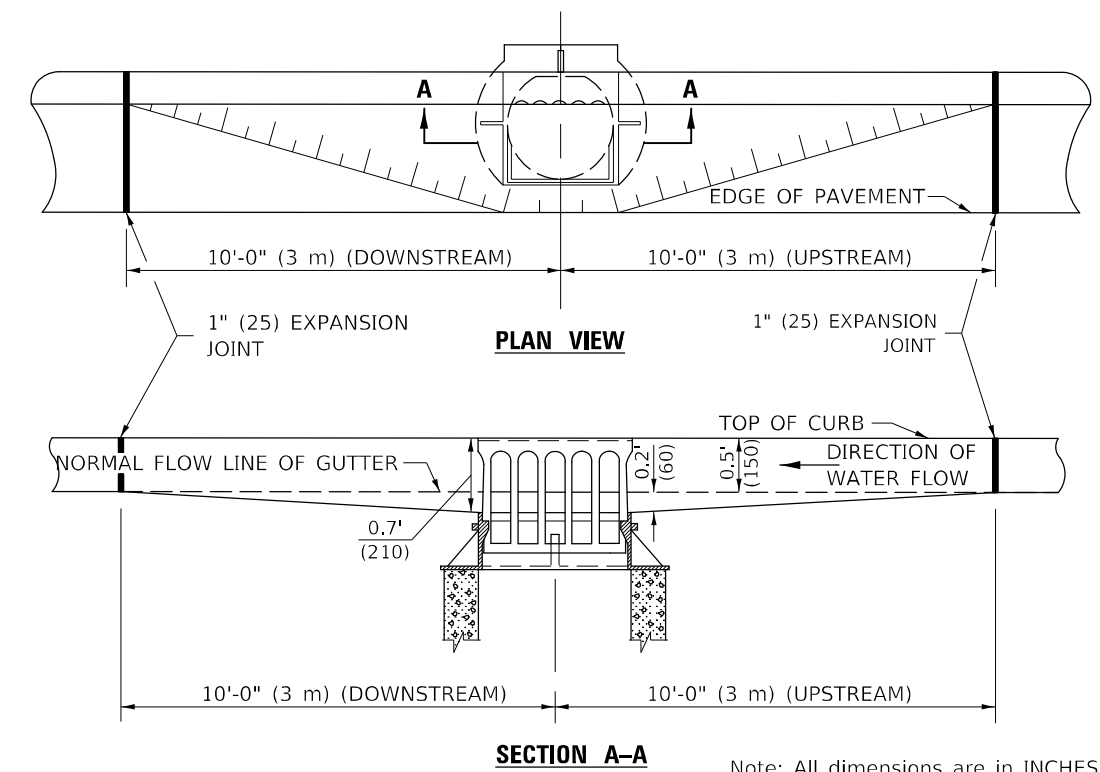
GUTTER DEPRESSION 0.1 FOOT (30mm)



GUTTER DEPRESSION 2" (50mm)



GUTTER DEPRESSION 0.2 FOOT (60mm)



GENERAL NOTES

1. THE TWO EXPANSION JOINTS SHALL BE PLACED AS SHOWN IN STANDARD 606001.
2. THE GUTTER GRADE SHALL BE DEPRESSED AT ALL INLETS, CATCH BASINS AND MANHOLES UNLESS OTHERWISE SPECIFIED IN THE PLANS.
3. THE COST OF THIS WORK SHALL BE INCLUDED IN THE COST OF THE VARIOUS PAY ITEMS OF WORK INVOLVED.

Note: All dimensions are in INCHES (millimeters) unless otherwise shown.

MODEL: I:\MODEL\MMFE FILE: MMFE_20230229.dwg PROJECT: I:\PROJECT\0570E29\CADD\DATA\CADD\DETAILS\0570E29\sheet-detail.dwg

USER NAME = Jason,Goble	DESIGNED -	REVISED - 11/06
	DRAWN -	REVISED -
PLOT SCALE = 100,0000' / in.	CHECKED -	REVISED -
PLOT DATE = 2/2/2023	DATE -	REVISED -

STATE OF ILLINOIS
DEPARTMENT OF TRANSPORTATION

GUTTER DEPRESSION AT INLETS, CATCH BASINS AND MANHOLES

SCALE: SHEET 1 OF 1 SHEETS STA. TO STA.

DISTRICT 5 DETAIL NO. 606AAAAA

F.A. RTE.	SECTION	COUNTY	TOTAL SHEETS	SHEET NO.
	D5 PARKING LOT 2023-1	EDGAR	20	19
CONTRACT NO. 70E29				
ILLINOIS FED. AID PROJECT				

SIGN R7-I 101

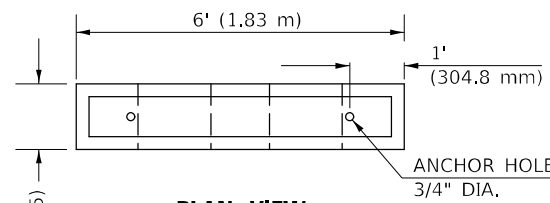


COLOR: LEGEND AND BORDER GREEN NON-REFLECTORIZED BACKGROUND WHITE REFLECTORIZED

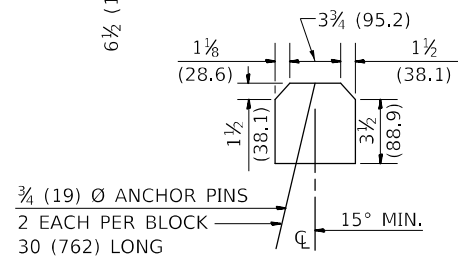
SIGN SIZE	DIMENSIONS							
	A	B	C	D	E	F	G	H
6 x 12 (152.4 x 304.8)	12 (304.8)	6 (152.4)	1.5 (38.1)	4.5 (114.3)	1.15 (29.2)	3.4 (86.4)	4.6 (116.8)	4.0 (101.6)

SIGN SIZE	SERIES Lines	Margin	Border	BLK Std
6 x 12 (152.4 x 304.8)	1/3A	0.37 (9.5)	0.37 (9.5)	B5-126

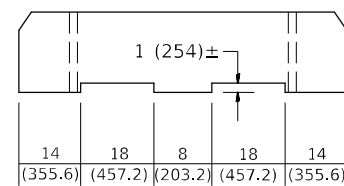
To be used with R7-8
* \$ = SERIES 3A "S"



PLAN VIEW



END VIEW



ELEVATION VIEW

NOTE: NOMINAL DIMENSIONS OF BLOCKS MAY VARY
CLASS P.C. CONCRETE SHALL BE USED THROUGHOUT.

BUMPER BLOCK DETAIL

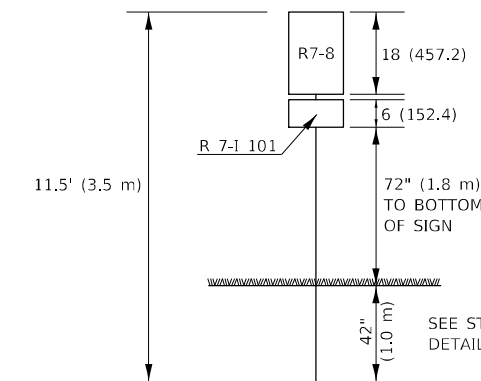
SIGN R7-8



ARROW
(USE ARROW AT
LOCATIONS WHERE
THERE ARE TWO
HANDICAP SPOTS
NEXT TO EACH OTHER.)

COLORS

LEGEND AND BORDER - GREEN
WHITE SYMBOL ON BLUE BACKGROUND
BACKGROUND - WHITE

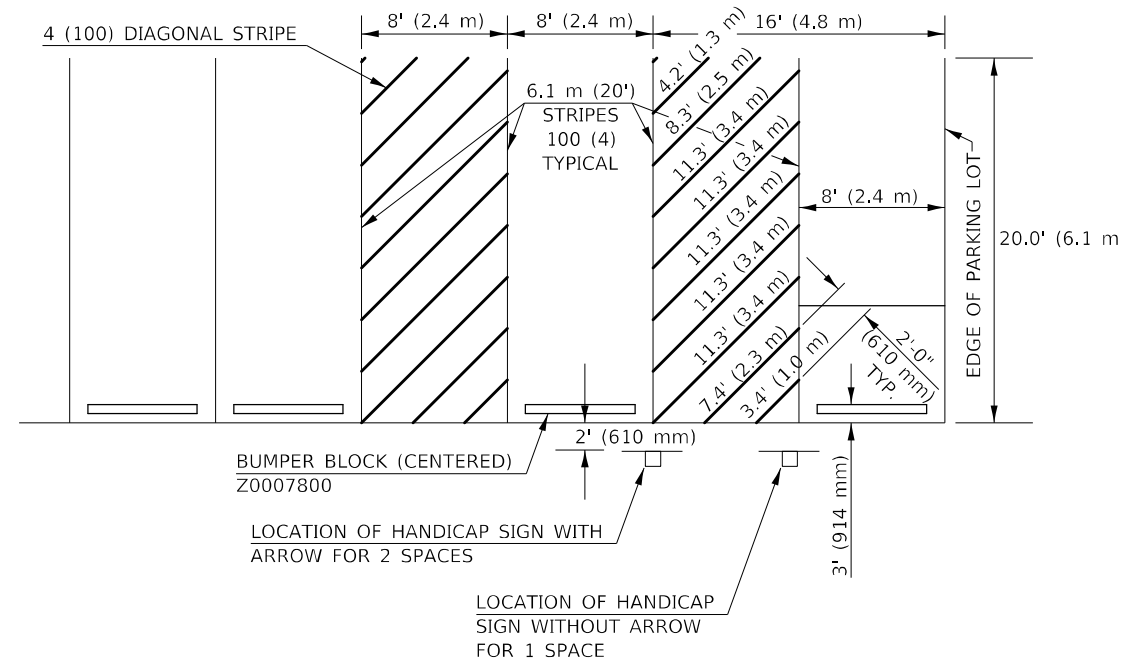


SEE STD. 720011 & 729001 FOR
DETAILS OF METAL POST, TYPE A

ESTIMATED QUANTITY

72900110 METAL POST - TYPE A	= 11.5' (3.5 m)
72000100 SIGN PANEL R 7-I 101	0.5 SQ.FT. (.046 m ²)
72000100 SIGN PANEL R 7-8	1.5 SQ.FT. (.139 m ²)
TOTAL	= 2.0 SQ.FT. (.185 m²)

SIGN POST DETAILS



THIS DRAWING HAS NO SCALE.

ESTIMATED QUANTITY OF PAVEMENT
MARKING-LINE 4" (100 mm) (FOR 1 SPACE)
TOTAL DIAGONALS = 80' (24.4 m)

SEE DETAIL FOR HANDICAP SIGN.

DETAIL OF PARKING SPACES

Note: All dimensions are in INCHES
(millimeters) unless otherwise shown.

DISTRICT 5 DETAIL NO. 72000100

USER NAME = Jason,Goble	DESIGNED -	REVISD - 11/06
	DRAWN -	REVISD - 12/27/17 JWS
PLOT SCALE = 100,0000' / in.	CHECKED -	REVISD -
PLOT DATE = 2/2/2023	DATE -	REVISD -

STATE OF ILLINOIS
DEPARTMENT OF TRANSPORTATION

DISABLED PARKING

SCALE: SHEET 1 OF 1 SHEETS STA. TO STA.

F.A. RTE.	SECTION	COUNTY	TOTAL SHEETS	SHEET NO.
	D5 PARKING LOT 2023-1	EDGAR	20	20
CONTRACT NO. 70E29				
ILLINOIS FED. AID PROJECT				

DESIGNER NOTE: SEE BDE 58-1.04(A)

MODEL: I:\MODEL\NAME FILE: NAME: P:\Public\pa-beadefy.com\PIV\DOT\Documents\DOT Office\Dir\dr: S:\Project\0570E29\CADD\data\CAD\Sheet\0570E29-sh-detailed.cad