

STATE OF ILLINOIS
DEPARTMENT OF TRANSPORTATION

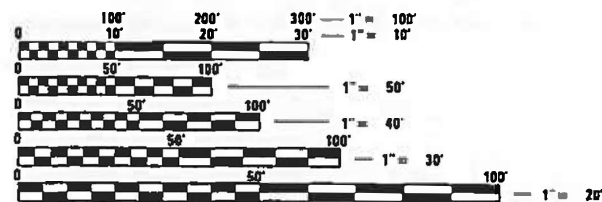
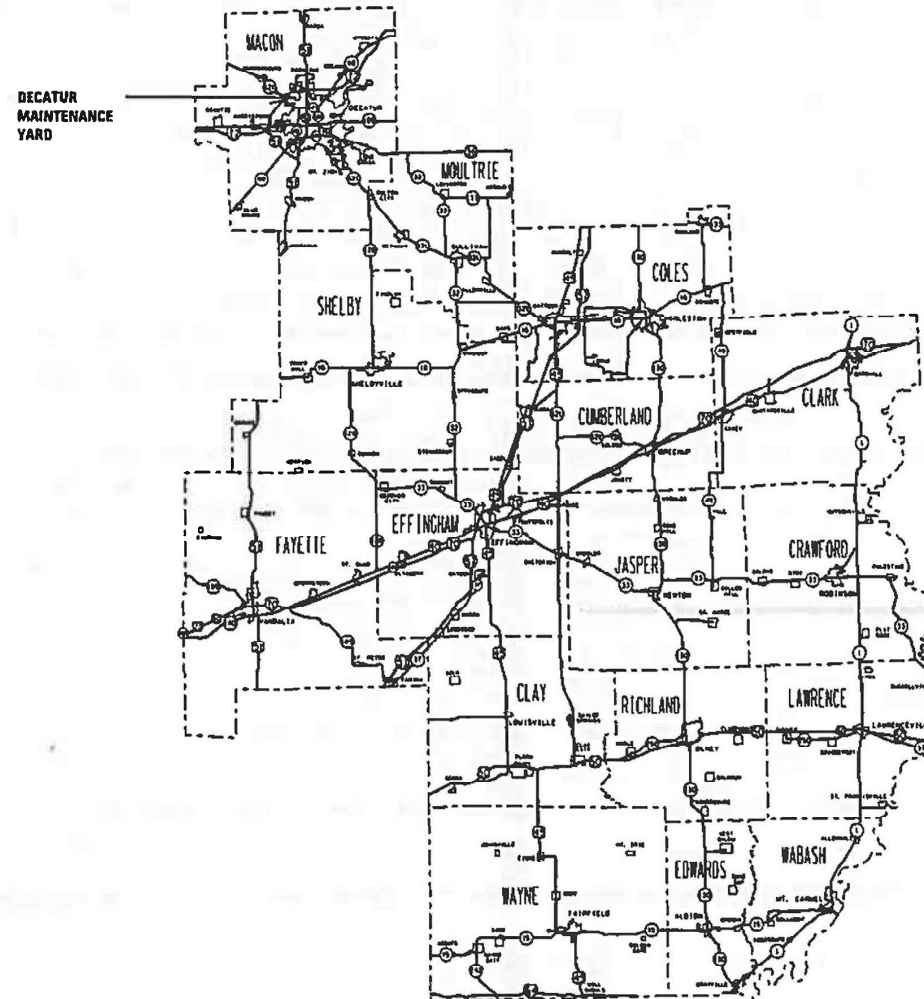
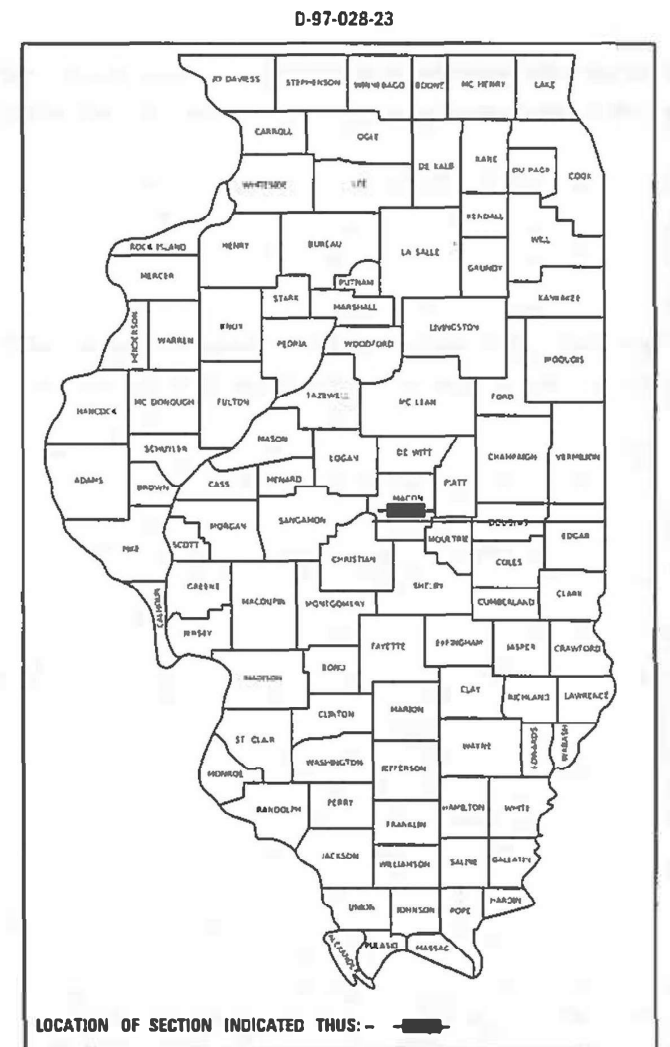
F.A.U. RTE.	SECTION	COUNTY	TOTAL SHEETS	SHEET NO.
7424	D7 FENCING 2023-1	MACON	4	1
		ILLINOIS	CONTRACT NO. 74B84	

FOR INDEX OF SHEETS, SEE SHEET NO. 2

PROPOSED HIGHWAY PLANS

FAU 7424 (WEST LAWN AVE)
SECTION D7 FENCING 2023-1
FENCE REPLACEMENT
MACON COUNTY

C-97-031-23



FULL SIZE PLANS HAVE BEEN PREPARED USING STANDARD ENGINEERING SCALES. REDUCED SIZED PLANS WILL NOT CONFORM TO STANDARD SCALES. IN MAKING MEASUREMENTS ON REDUCED PLANS, THE ABOVE SCALES MAY BE USED.

J.U.L.I.E.
JOINT UTILITY LOCATION INFORMATION FOR EXCAVATORS
1-800-892-0123
OR 811

PROJECT ENGINEER DEWAYNE SEACHRIST
PROJECT MANAGER ROBERT GREUEL

CONTRACT NO. 74B84

STATE OF ILLINOIS
DEPARTMENT OF TRANSPORTATION

SUBMITTED January 18 2023
Jeffrey P. Hynes
REGIONAL ENGINEER

March 24, 2023
S. E. A. Etk
ENGINEER OF DESIGN AND ENVIRONMENT

March 24, 2023
Stephen M. Smith
DIRECTOR OF HIGHWAYS PROJECT IMPLEMENTATION

PRINTED BY THE AUTHORITY
OF THE STATE OF ILLINOIS

INDEX OF SHEETS

SHEET NO.	DESCRIPTION
1	COVER SHEET
2	INDEX OF SHEETS AND GENERAL NOTES
3	SUMMARY OF QUANTITIES
4	DECATUR MAINTENANCE YARD FENCING PLAN

THE FOLLOWING STANDARDS ARE A PART OF THESE PLANS AND ARE INCLUDED FOLLOWING THE LAST NUMBERED SHEET OF THE PLANS.

000001-08	STANDARD SYMBOLS, ABBREVIATIONS AND PATTERNS
001006	DECIMAL OF AN INCH AND OF A FOOT
664001-02	CHAIN LINK FENCE
701001-02	OFF-ROAD OPERATIONS, 2L, 2W, MORE THAN 15' AWAY
701006-05	OFF-ROAD OPERATIONS, 2L, 2W, 15' TO 24" FROM PAVEMENT EDGE
701901-08	TRAFFIC CONTROL DEVICES

GENERAL NOTES

THE WORK INCLUDED IN THIS PROJECT CONSISTS OF REMOVAL AND REPLACEMENT OF THE CHAIN LINK FENCE, INSTALLATION OF A SLIDING CANTILEVER GATE, AND ANY OTHER INCIDENTAL WORK NECESSARY TO COMPLETE THE PROJECT. THE SLIDING CANTILEVER GATE MUST HAVE A LATCHING SYSTEM THAT WOULD ACCOMMODATE A PADLOCK THAT IS EASILY ACCESSIBLE FROM THE OUTSIDE OF THE FENCED IN AREA. THE SLIDING CANTILEVER GATE MUST HAVE A STOPPING DEVICE THAT PREVENTS THE GATE FROM OPENING TOO FAR TO PROTECT THE PLASTIC PROTECTIVE SAFETY GUARDS OVER THE ROLLERS. THE LOCATION OF THIS PROJECT IS THE DECATUR MAINTENANCE YARD AT 4142 NORTH WESTLAWN AVE., DECATUR, IL.

THE EXISTING EQUIPMENT, VEHICLES, AND MATERIALS LOCATED NEAR THE FENCE IN THE YARD WILL BE MOVED AND REPLACED BY STATE FORCES TO ACCOMMODATE THE WORK.

UNLESS OTHERWISE DIRECTED THE NEW FENCE SHALL BE CONSTRUCTED IN THE SAME LOCATION AS THE EXISTING FENCE.

EXISTING PROPERTY MARKERS WILL BE STAKED BY IDOT BEFORE WORK BEGINS.

MODEL: Default
 FILE NAME: p:\ultra-cw-bea\paw.com\PIV\DOT\Documents\IDOT\Office\Dir\drf_7\Project\748B84\CAD\Drawings\CAD\Drawings\748B84-4-17-23-gen01.dwg

USER NAME = Mona.Steffen	DESIGNED -	REVISED -	STATE OF ILLINOIS DEPARTMENT OF TRANSPORTATION	INDEX OF SHEETS AND GENERAL NOTES		F.A.U. RTE.	SECTION	COUNTY	TOTAL SHEETS	SHEET NO.
PLOT SCALE = 100,0000 ' / in.	DRAWN -	REVISED -				7424	D7 FENCING 2023-1	MACON	4	2
PLOT DATE = 1/31/2023	CHECKED -	REVISED -		SCALE: SHEET OF SHEETS STA. TO STA.		ILLINOIS FED. AID PROJECT CONTRACT NO. 748B4				
	DATE -	REVISED -								

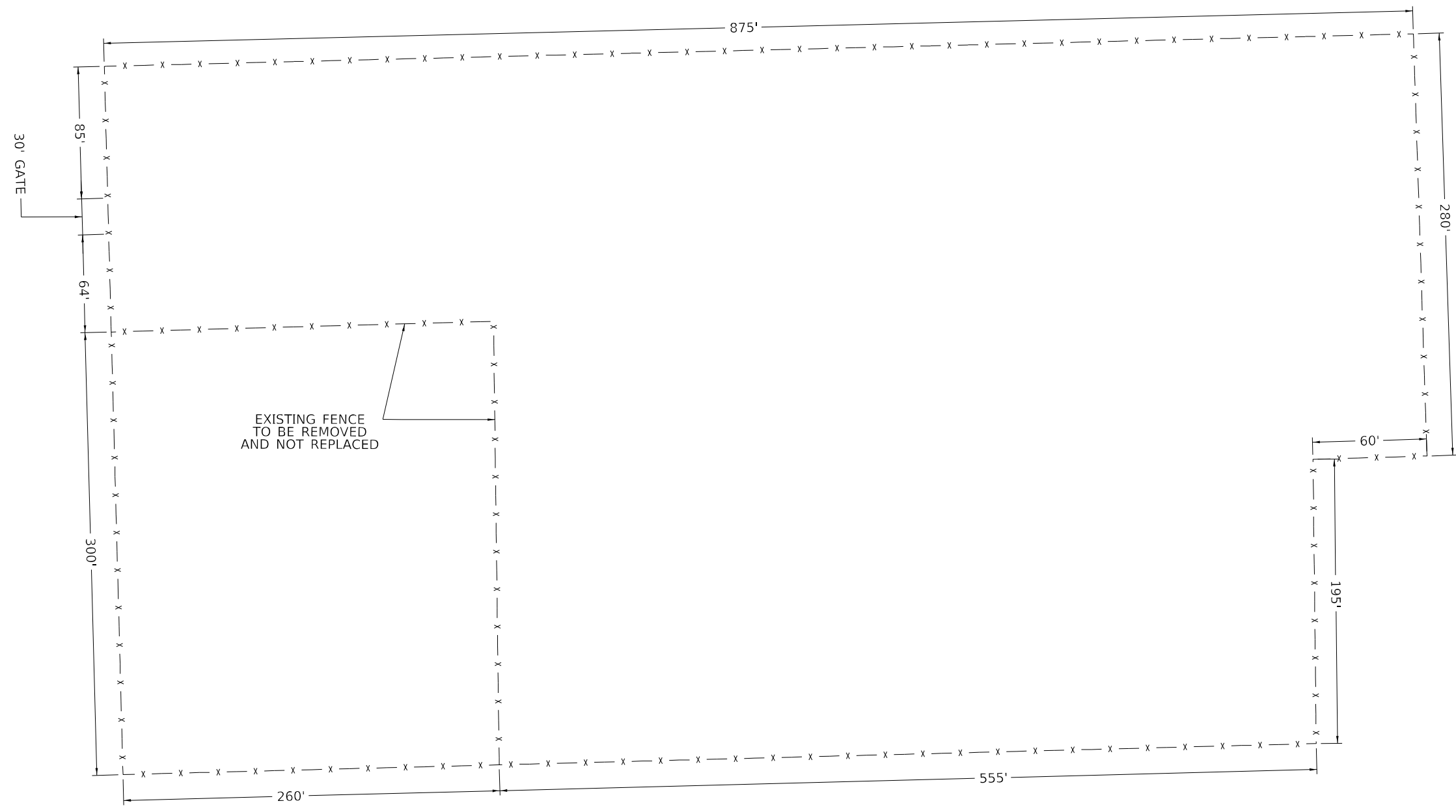
URBAN

SUMMARY OF QUANTITIES			TOTAL QUANTITIES	CONSTRUCTION TYPE CODE		
CODE NO	ITEM	UNIT		100% STATE 0044 DECATUR YARD		
66400305	CHAIN LINK FENCE, 6'	FOOT	2674	2674		
* 66900200	NON-SPECIAL WASTE DISPOSAL	CU YD	35	35		
* 66900530	SOIL DISPOSAL ANALYSIS	EACH	1	1		
* 66901001	REGULATED SUBSTANCES PRE-CONSTRUCTION PLAN	L SUM	1	1		
* 66901003	REGULATED SUBSTANCES FINAL CONSTRUCTION REPORT	L SUM	1	1		
* 66901006	REGULATED SUBSTANCES MONITORING	CAL DA	10	10		
67100100	MOBILIZATION	L SUM	1	1		
X6640300	CHAIN LINK FENCE REMOVAL	FOOT	2704	2704		
X6640500	CHAIN LINK GATE ASSEMBLY (SPECIAL)	EACH	1	1		

* SPECIALTY ITEM

MODEL: Default
 FILE: \\maile-pw-beadley.com\P\DOT\Documents\DOT Office\Dir\dr_7\Project\74884\CAD\Drawings\CAD\Sheet\74884-Sub-500.dwg

USER NAME = Mona.Steffen	DESIGNED -	REVISED -	STATE OF ILLINOIS DEPARTMENT OF TRANSPORTATION	SUMMARY OF QUANTITIES			F.A.U. RTE.	SECTION	COUNTY	TOTAL SHEETS	SHEET NO.
PLOT SCALE = 100,0000 ' / in.	DRAWN -	REVISED -					7424	D7 FENCING 2023-1	MACON	4	3
PLOT DATE = 1/31/2023	CHECKED -	REVISED -		SCALE: SHEET OF SHEETS STA. TO STA.			CONTRACT NO. 74884				
DATE -	REVISED -	REVISED -					ILLINOIS FED. AID PROJECT				



DECATUR MAINTENANCE YARD
 4142 NORTH WESTLAWN AVE.
 DECATUR IL, 62526

MODEL: Default
 FILE: \\maile-pw-bentley.com\P\DOT\Documents\DOT Office\Director_7\Project\74884\CADD\DATA\CAD\Fence\74884-ent-pln.dgn

USER NAME = Mona.Steffen	DESIGNED -	REVISED -
	DRAWN -	REVISED -
PLOT SCALE = 40,0000 * / in.	CHECKED -	REVISED -
PLOT DATE = 1/31/2023	DATE -	REVISED -

**STATE OF ILLINOIS
 DEPARTMENT OF TRANSPORTATION**

**DECATUR MAINTENANCE YARD
 FENCING PLAN**

SCALE: SHEET OF SHEETS STA. TO STA.

F.A.U. RTE.	SECTION	COUNTY	TOTAL SHEETS	SHEET NO.
7424	D7 FENCING 2023-1	MACON	4	4
ILLINOIS FED. AID PROJECT			CONTRACT NO. 74884	