

STATE OF ILLINOIS
DEPARTMENT OF TRANSPORTATION

F.A.S. RTE.	SECTION	COUNTY	TOTAL SHEETS	SHEET NO.
2887	D9 BRIDGE REPAIR 2022-6	WILLIAMSON	8	1
		ILLINOIS	CONTRACT NO. 78918	

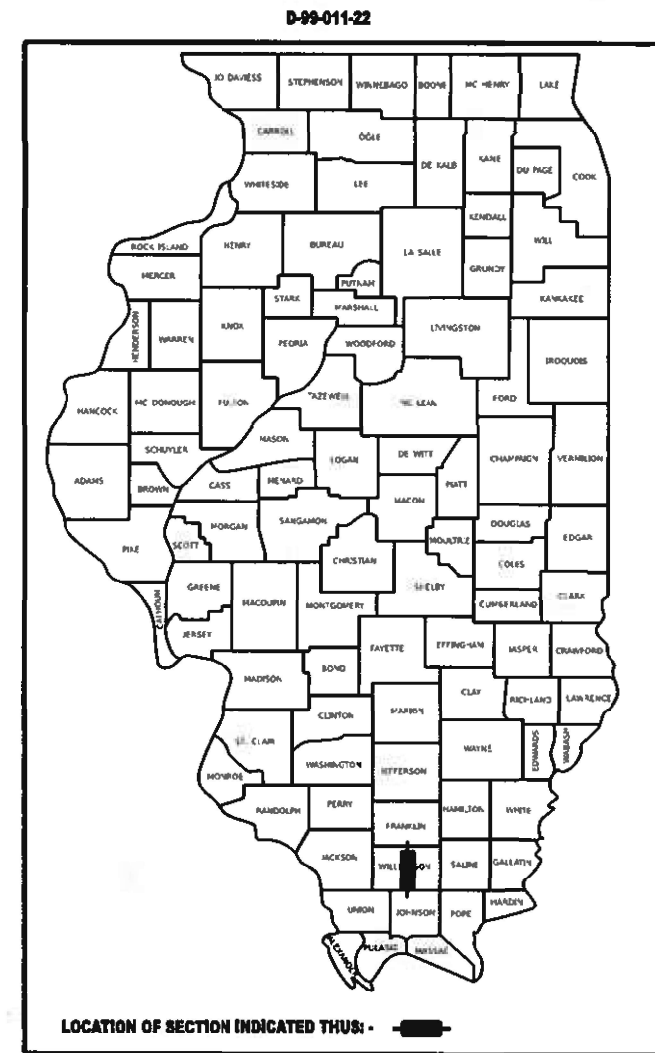
FOR INDEX OF SHEETS, SEE SHEET NO. 3
FOR SUMMARY OF QUANTITIES, SEE SHEET NO. 4

**PROPOSED
HIGHWAY PLANS**

FAS ROUTE 2887 (IL 37)
SECTION D9 BRIDGE REPAIR 2022-6
BRIDGE SUBSTRUCTURE REPAIR
WILLIAMSON COUNTY

TRAFFIC DATA

2019 ADT = 4650 (10% TRUCKS)



TOWNSHIPS
WEST MARION PRECINCT

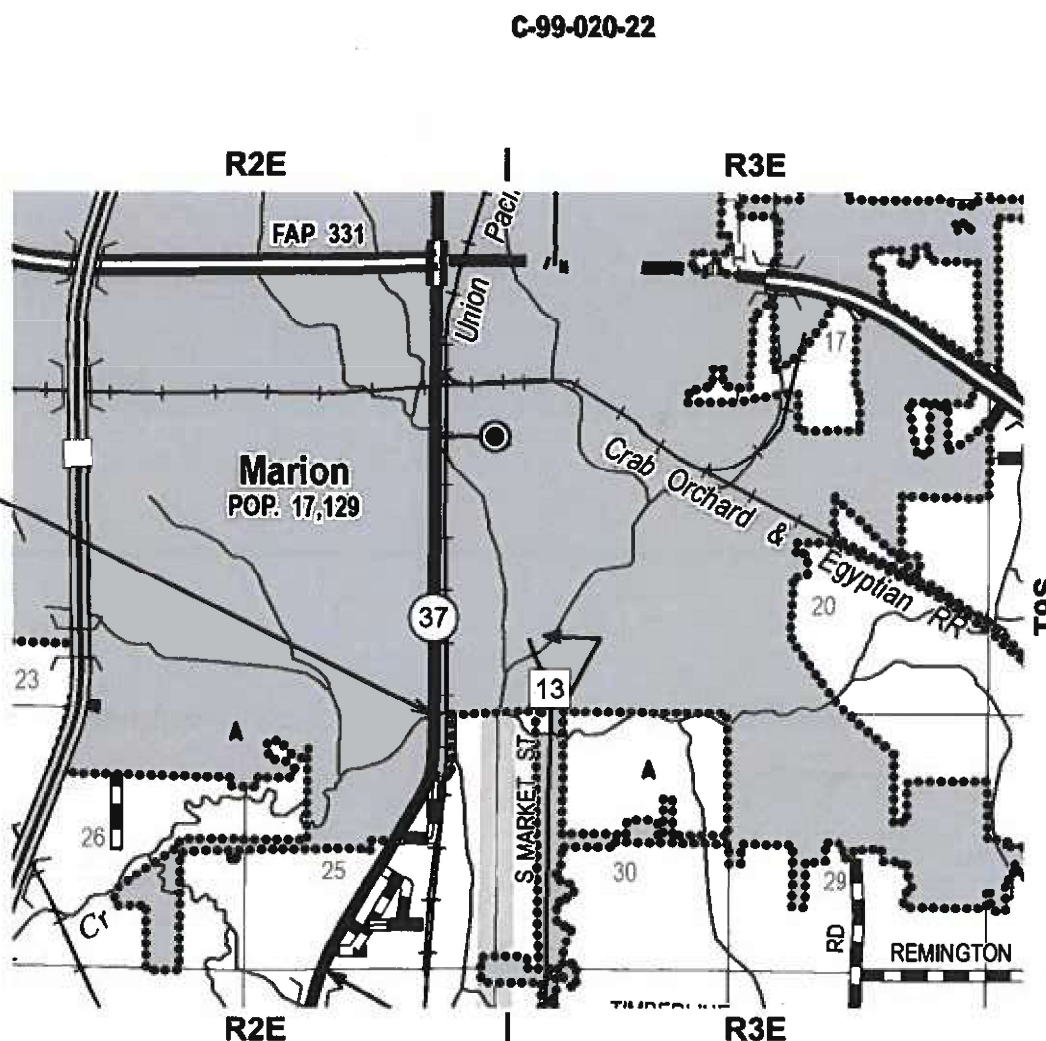
SN 100-0072
IL 37 OVER CRAB ORCHARD CREEK

DESIGN DESIGNATION : N/A
COORDINATE SYSTEM : N/A
POSTED SPEED : 55 MPH

J.U.L.I.E.
JOINT UTILITY LOCATION INFORMATION FOR EXCAVATION
1-800-892-0123
OR 811

PROJECT ENGINEER: GRANT DETERDING
PROJECT DESIGNER: EHREN KIRBY

CONTRACT NO. 78918



STATE OF ILLINOIS
DEPARTMENT OF TRANSPORTATION

SUBMITTED Jan 18 2023
Kirk H. Brown
REGION FIVE ENGINEER

March 24, 2023 [Signature]
ENGINEER OF DESIGN AND ENVIRONMENT

March 24, 2023 [Signature]
DIRECTOR OF HIGHWAYS PROJECT IMPLEMENTATION

**PRINTED BY THE AUTHORITY
OF THE STATE OF ILLINOIS**

Prepared By: Charles Stein
DISTRICT STUDIES & PLANS ENGINEER

Examined By: Nancy Lee
DISTRICT LAND ACQUISITION ENGINEER

Examined By: Carla M. ...
DISTRICT PROGRAM DEVELOPMENT ENGINEER

Examined By: [Signature]
DISTRICT OPERATIONS ENGINEER

Examined By: Douglas ...
DISTRICT PROJECT IMPLEMENTATION ENGINEER

Examined By: Douglas ...
DISTRICT CONSTRUCTION ENGINEER

Examined By: Aan Hays
DISTRICT MATERIALS ENGINEER

MODEL: 30002LXAME\$
FILE NAME: 3002LX

USER NAME = SUSERS	DESIGNED -	REVISED -
	DRAWN -	REVISED -
PLOT SCALE = SSCAL3	CHECKED -	REVISED -
PLOT DATE = SDATES	DATE -	REVISED -

STATE OF ILLINOIS
DEPARTMENT OF TRANSPORTATION

SIGNATURE SHEET

SCALE: 1" = 40' SCALE SHEET 2 OF 8 SHEETS STA. TO STA.

F.A.S. RTE.	SECTION	COUNTY	TOTAL SHEETS	SHEET NO.
2887	D9 BRIDGE REPAIR 2022-6	WILLIAMSON	8	2

ILLINOIS FED. AID PROJECT

INDEX OF SHEETS

SHEET NO	DESCRIPTION
1	COVER SHEET
2	SIGNATURE SHEET
3	INDEX OF SHEETS, HIGHWAY STANDARDS, GENERAL NOTES & COMMITMENTS
4	SUMMARY OF QUANTITIES
5	REPAIR DETAILS PIER-1
6	EXISTING PLAN SHEET
7	RIPRAP DETAIL
8	EXISTING ROW SHEET

GENERAL NOTES

NONE
COMMITMENTS:
 NONE

HIGHWAY STANDARDS

000001-08_STANDARDSYMBOLSABBREVIATIONS-PATTERNS-001
 001001-02_AREASOFREINFREBARS
 001006_DECIMALOFINCH-FOOT
 701001-02_OFFRDOP-2L2W-15FTMINFROMEOP
 701006-05_OFFRDOP-2L2W-15FTTOEOP
 701011-04_OFFRDMOVINGOP-2L2W-DAYONLY
 701201-05_LNCLOSURE2L2W-DAYONLY
 701901-08_TRAFCNTRLDEVICES

MODEL: MODELNAMES
 FILENAME: SHEETS

USER NAME = \$USERS	DESIGNED -	REVISED -	STATE OF ILLINOIS DEPARTMENT OF TRANSPORTATION	INDEX OF SHEETS, GENERAL NOTES, AND HIGHWAY STANDARDS	F.A.S RTE.	SECTION	COUNTY	TOTAL SHEETS	SHEET NO.
PLOT SCALE = \$SCALE\$	DRAWN -	REVISED -			2887	D9 BRIDGE REPAIR 2022-6	WILLIAMSON	8	3
PLOT DATE = \$DATES	CHECKED -	REVISED -			CONTRACT NO. 78918				
	DATE -	REVISED -			ILLINOIS	FED. AID PROJECT			
			SCALING SCALE	SHEET 3 OF 7 SHEETS	STA.	TO STA.			

SUMMARY OF QUANTITIES

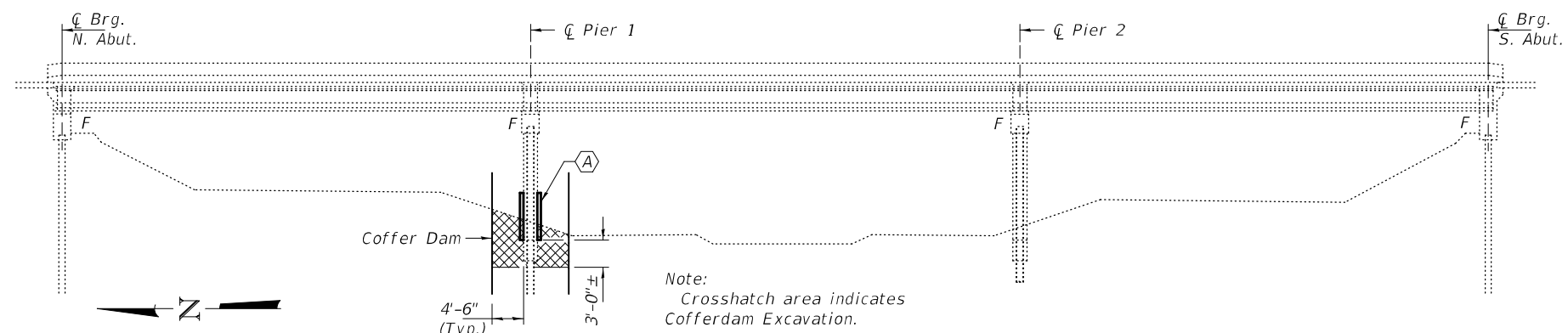
COUNTY:	WILLIAMSON CO
ROUTE:	IL 37 (FAS 2887)
FUNDING:	100% STATE
LOCATION:	URBAN
	SN 100-0072
	0013

CODE NUMBER	ITEM DESCRIPTION	UNIT	TOTAL QUANTITY	
28100107	STONE RIPRAP, CLASS A4	SQ YD	141	141
28200200	FILTER FABRIC	SQ YD	141	141
50102400	CONCRETE REMOVAL	CU YD	0.6	0.6
50200300	COFFERDAM EXCAVATION	CU YD	145	145
50201101	COFFERDAM (TYPE 1) (LOCATION - 1)	EACH	1	1
50300225	CONCRETE STRUCTURES	CU YD	10.5	10.5
50800205	REINFORCEMENT BARS, EPOXY COATED	POUND	1,430	1,430
67100100	MOBILIZATION	L SUM	1	1
70100450	TRAFFIC CONTROL AND PROTECTION, STANDARD 701201	L SUM	1	1
70107025	CHANGEABLE MESSAGE SIGN	CAL DA	28	28

REV. - MS

MODEL: MODEL NAMES
FILE NAME: SHEETS

USER NAME = \$USERS	DESIGNED -	REVISED -	STATE OF ILLINOIS DEPARTMENT OF TRANSPORTATION	SUMMARY OF QUANTITIES	F.A.S RTE.	SECTION	COUNTY	TOTAL SHEETS	SHEET NO.
PLOT SCALE = \$\$CALES	CHECKED -	REVISED -			2887	D9 BRIDGE REPAIR 2022-6	WILLIAMSON	8	4
PLOT DATE = \$DATES	DATE -	REVISED -			CONTRACT NO. 78918				
					ILLINOIS FED. AID PROJECT				
				SCALE	SHEET 4	OF	SHEETS	STA.	TO STA.



ELEVATION
 A - Pier 1 Repair.

GENERAL NOTES

Plan dimensions and details relative to existing plans are subject to nominal construction variations. The Contractor shall field verify existing dimensions and details affecting new construction and make necessary approved adjustments prior to construction or ordering of materials. Such variations shall not be cause for additional compensation for a change in scope of the work, however, the Contractor will be paid for the quantity actually furnished at the unit price bid for the work.

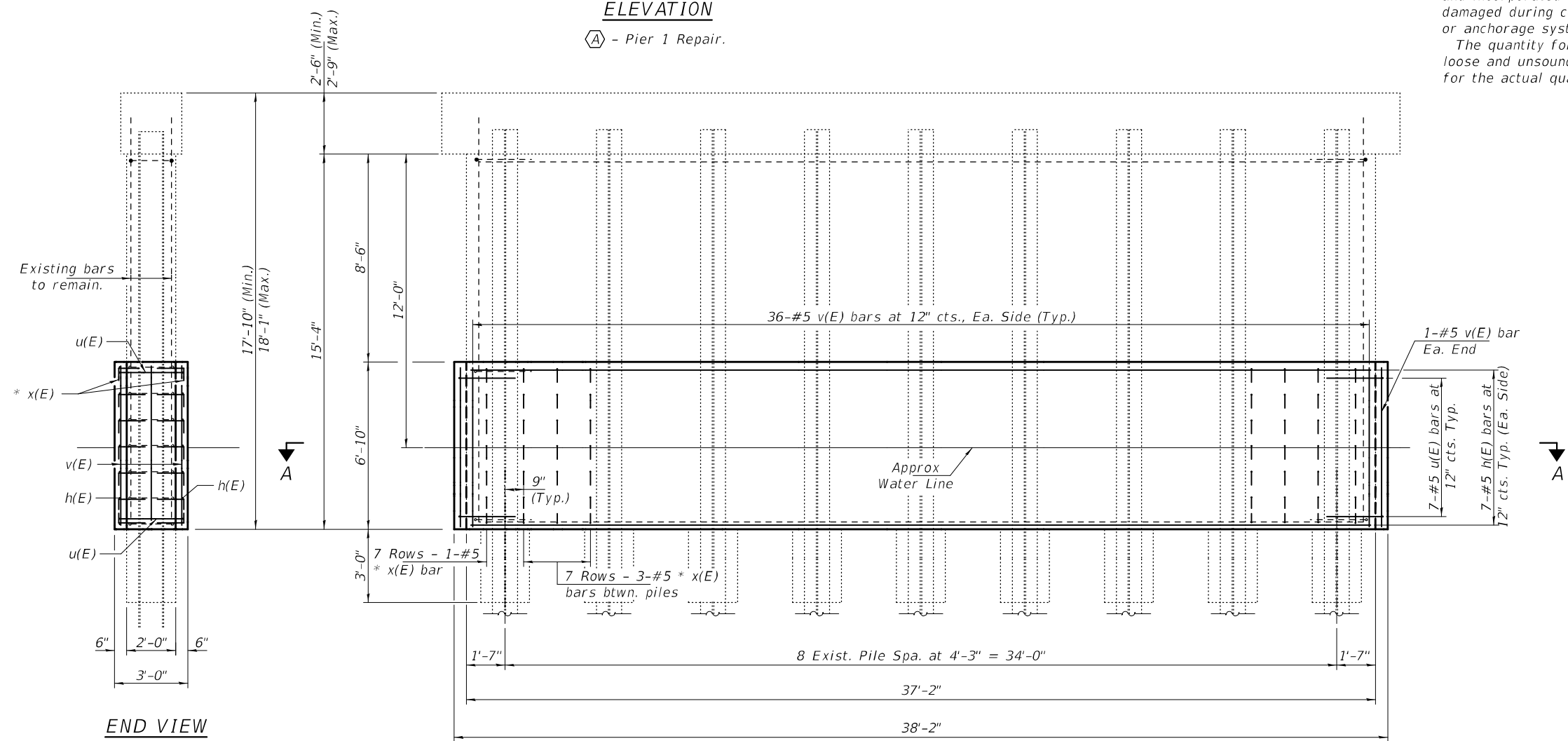
The existing concrete surface shall be cleaned and prepared in accordance with the Special Provisions.

Reinforcement bars designated (E) shall be epoxy coated.

Contractor shall verify the condition of Pier 1 below the water level after dewatering. Additional quantity will be determined by the Engineer and will be paid for at the unit price bid for the work.

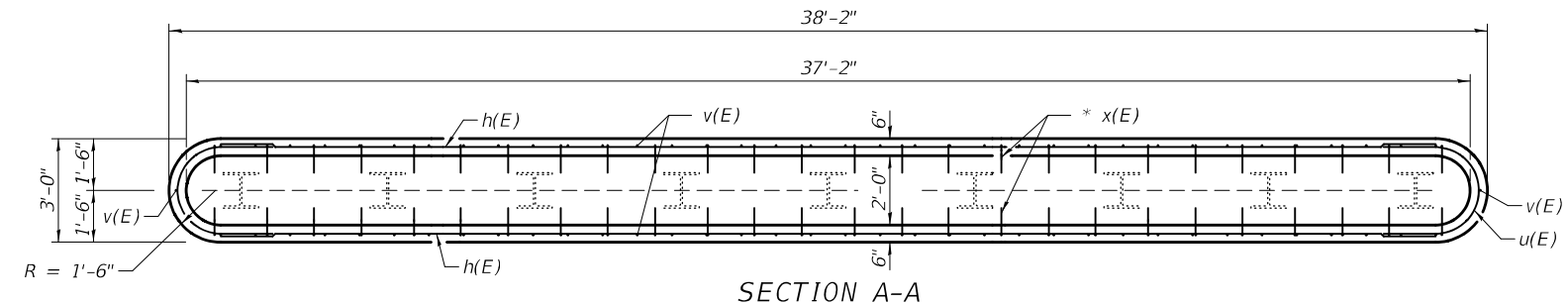
Existing reinforcement bars exposed during concrete removal shall be cleaned and incorporated into the new construction. Any reinforcement bars that are damaged during concrete removal shall be replaced with an approved bar splicer or anchorage system. Cost included with Concrete Removal.

The quantity for Concrete Removal is estimated. The Engineer shall mark all loose and unsound concrete prior to the removal. The Contractor will be paid for the actual quantity at the unit price bid for the work.



END VIEW

REPLACEMENT
 (Pier 1 Looking South)



* Epoxy grout x(E) bars in 9" min. holes according to Article 584 of the Standard Specifications.

TOTAL BILL OF MATERIAL

Bar	No.	Size	Length	Shape
h(E)	14	#5	36'-8"	—
u(E)	14	#5	6'-10"	⊂
v(E)	74	#5	6'-6"	—
x(E)	182	#5	1'-6"	⌒
Concrete Removal		Cu. Yd.	0.6	
Concrete Structures		Cu. Yd.	10.5	
Cofferdam (Type 1) (Location -1)		Each	1	
Reinforcement Bars, Epoxy Coated		Pound	1430	
Cofferdam Excavation		Cu. Yd.	145	



Jayme F. Schiff
 EXPIRES 11-30-2024

DESIGNED - Victor H. Veliz
 CHECKED - Jeffrey Burke
 DRAWN - Venkat Ramana Reddy V
 CHECKED - VHV JSB

PASSED
 Jayme F. Schiff
 ENGINEER OF BRIDGES AND STRUCTURES

DATE - MARCH 02, 2023
 REVISED -
 REVISED -

STATE OF ILLINOIS
 DEPARTMENT OF TRANSPORTATION

REPAIR DETAILS PIER - 1
 SN 100-0072

SHEET NO. 1 OF 2 SHEETS

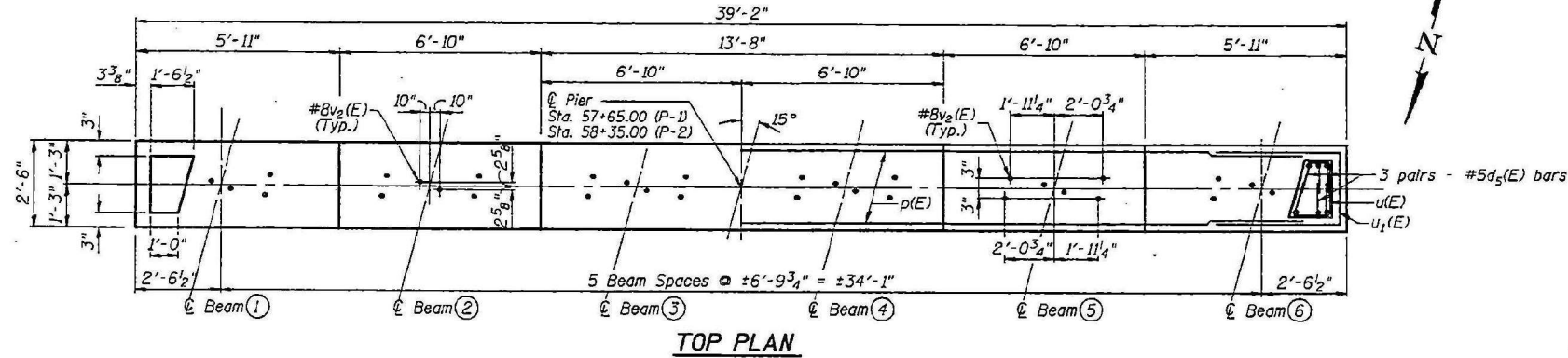
F.A.S. RTE.	SECTION	COUNTY	TOTAL SHEETS	SHEET NO.
2887	D9 BRIDGE REPAIR 2022-6	WILLIAMSON	8	5
ILLINOIS			CONTRACT NO. 78918	
FED. AID PROJECT				

NOTES:
 All edges shall have standard $\frac{3}{4}$ " chamfers except as noted.
 Space reinforcement in cap to miss dowel bars.
 Four steps monolithically with cap.

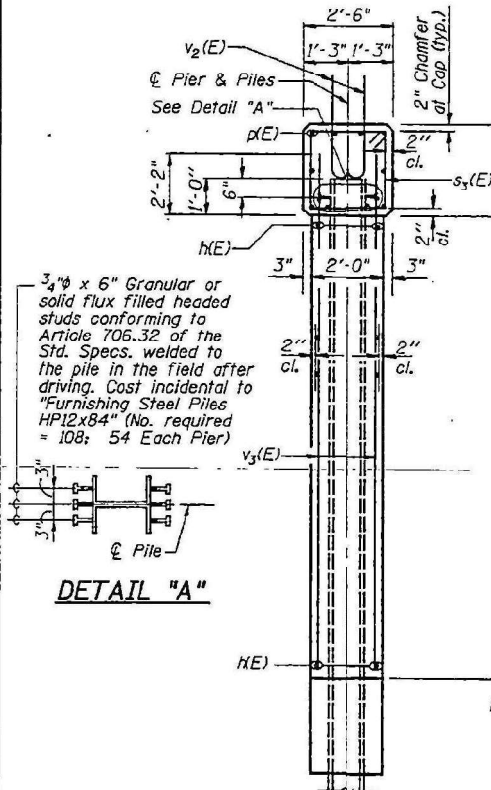
FILE NO.	SECTION	COUNTY	TOTAL SHEETS	SHEET NO.
2905	113B-1	WILLIAMSON	34	28
PROJECT NAME		PROJECT NO.		
ILLINOIS		FED. AID PROJECT		

PILE DATA

Type: HP12x84
 Capacity: Driven to refusal
 Est. Length: 83 feet
 No. Required: At pier 1 : 8 + 1 test pile
 At pier 2 : 9
 * Each pile is designed to include 47 tons of downdrag force due to liquefaction.

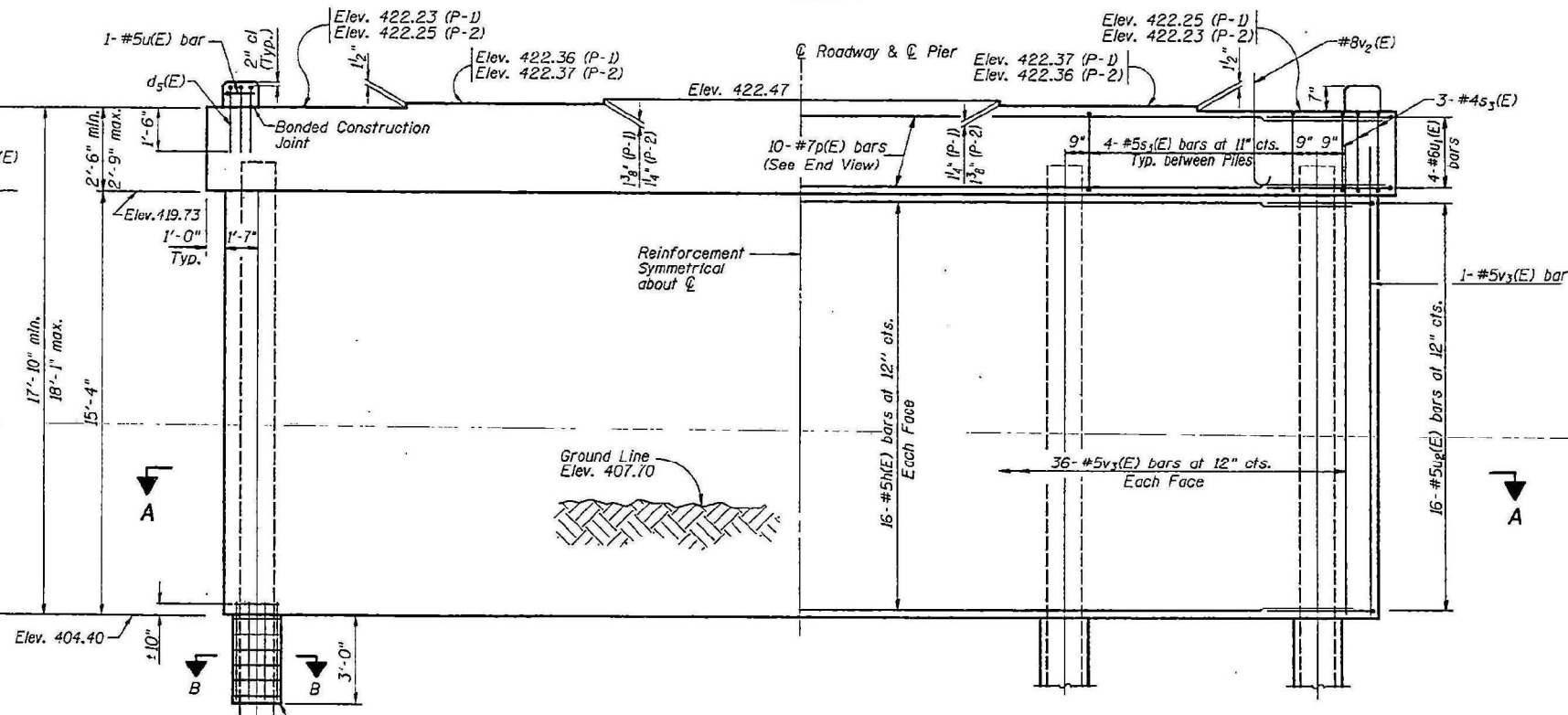


TOP PLAN

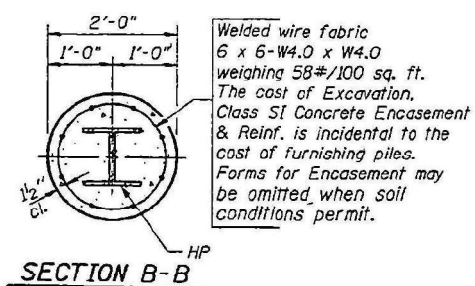


DETAIL "A"

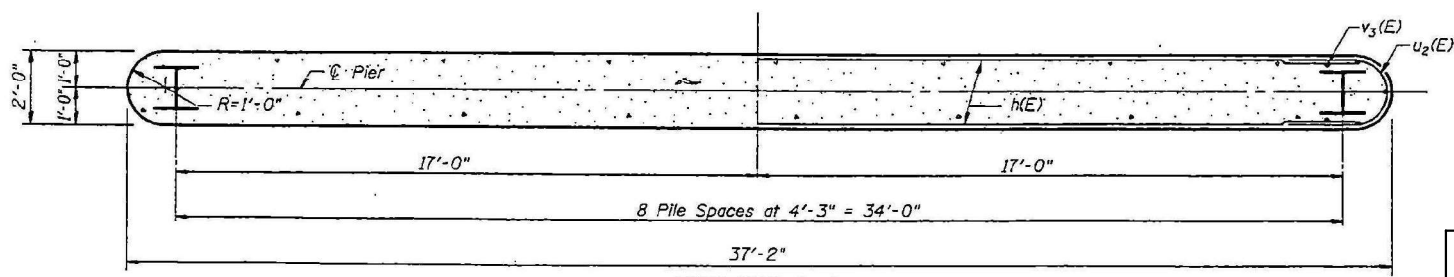
END VIEW



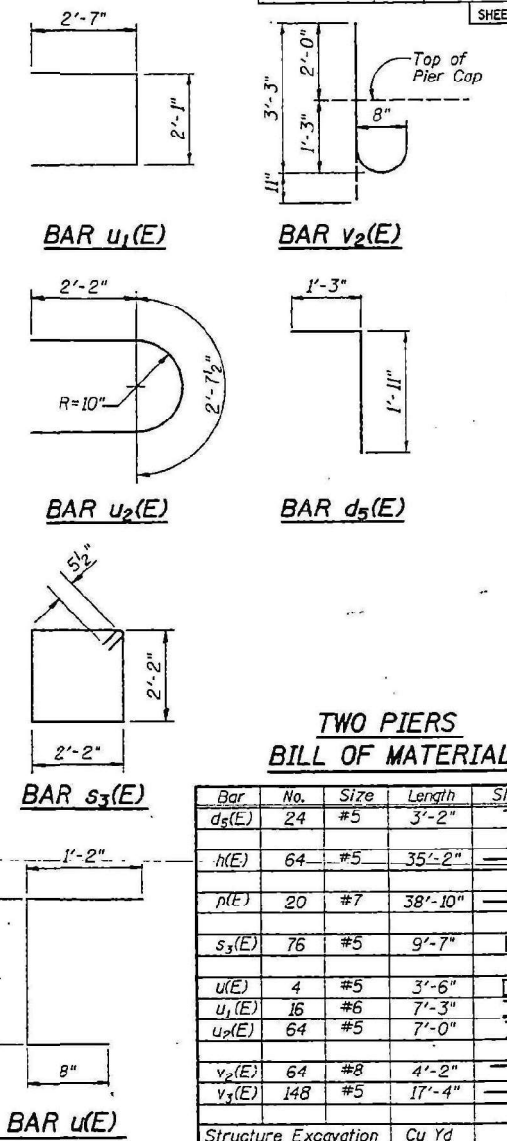
ELEVATION
(Looking South)



SECTION B-B



SECTION A-A



**TWO PIERS
BILL OF MATERIAL**

Bar	No.	Size	Length	Shape
d5(E)	24	#5	3'-2"	U
h(E)	64	#5	35'-2"	—
p(E)	20	#7	38'-10"	—
s3(E)	76	#5	9'-7"	U
u(E)	4	#5	3'-6"	U
u1(E)	16	#6	7'-3"	U
u2(E)	64	#5	7'-0"	U
v2(E)	64	#8	4'-2"	U
v3(E)	148	#5	17'-4"	—

Structure Excavation	Cu Yd	60
Concrete Structures	Cu Yd	102.8
Reinforcement Bars (Epoxy Coated)	Pound	8820
Furnishing Steel Piles HP12x84	Foot	1411
Driving Steel Piles HP12x84	Foot	1411
Test Piles Steel HP12x84	Each	1
Structure Excavation Protection for Pile Bents	Each	2

Reinforcement bars designated (E) shall be epoxy coated.
 ** See Special Provision.

FOR INFORMATION ONLY

ILLINOIS DEPARTMENT OF TRANSPORTATION
PIERS
 ILLINOIS ROUTE 37 OVER
 CRAB ORCHARD CREEK
 F.A.S. RTE. 2905 SECTION 113B-1
 WILLIAMSON COUNTY
 Sta. 58+00
 STRUCTURE NUMBER 100-0072

DATE May 31, 1995
 REVISED Aug. 31, 1995
 DRAWN BY DRB
 CHECKED BY MJM

BLANK, WESSELINK, COOK & ASSOCIATES

ENGINEERS - CONSULTANTS DECATUR, ILLINOIS

DESIGNED - VHV
 CHECKED - JSB
 DRAWN - Venkat Ramana Reddy V
 CHECKED - VHV JSB

PASSED
Jaime F. J...
 ENGINEER OF BRIDGES AND STRUCTURES

DATE - MARCH 02, 2023
 REVISED -
 REVISED -

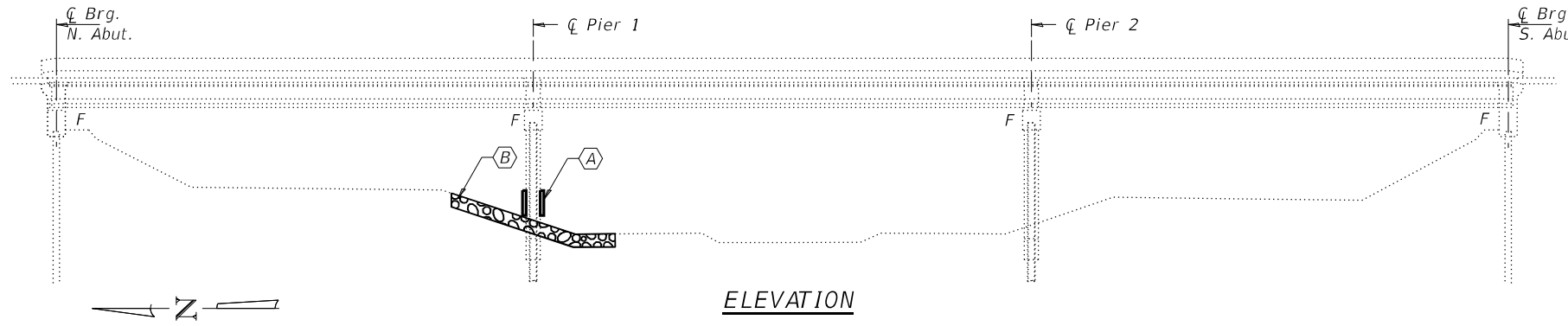
STATE OF ILLINOIS
 DEPARTMENT OF TRANSPORTATION

EXISTING PLAN SHEET - FOR INFORMATION ONLY
 SN 100-0072

SHEET NO. 2 OF 2 SHEETS

F.A.S. RTE.	SECTION	COUNTY	TOTAL SHEETS	SHEET NO.
2887	D9 BRIDGE REPAIR 2022-6	WILLIAMSON	8	6
ILLINOIS			CONTRACT NO. 78918	

z:\3349301_01\unres.dgn Dec. 25, 1995 09:55:25



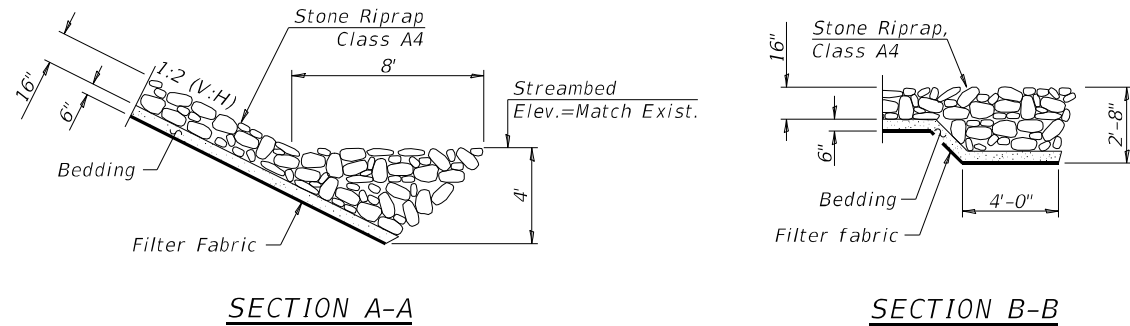
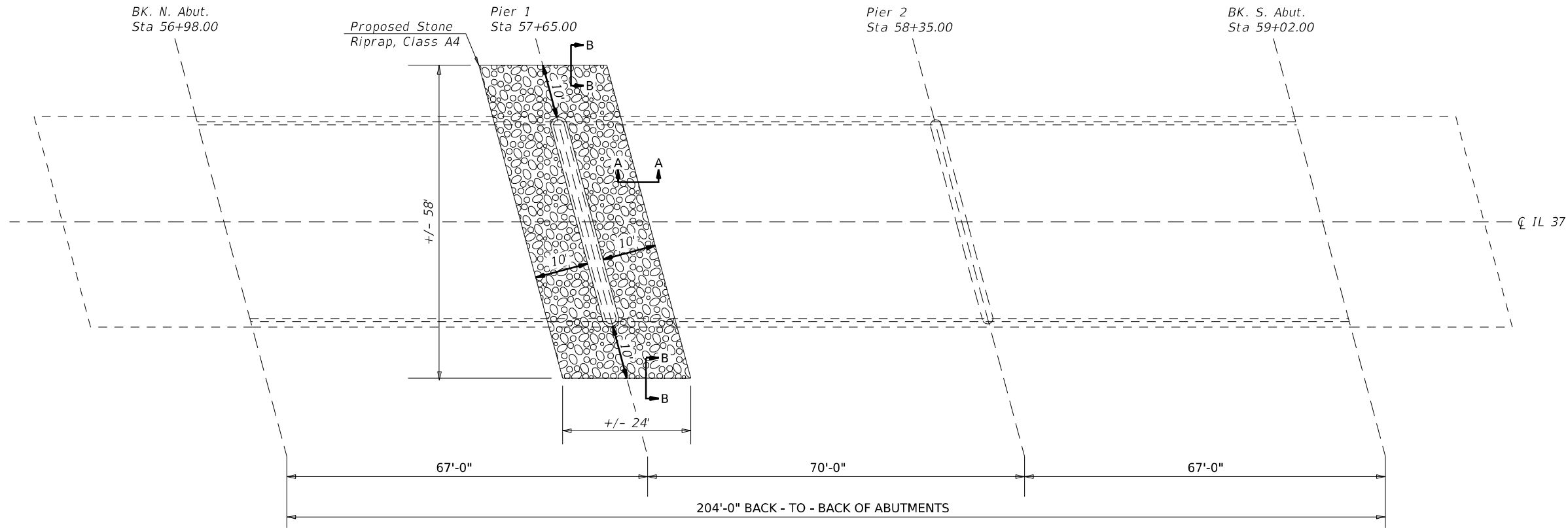
ELEVATION

- (A) - Pier 1 Repair.
- (B) - Stone Riprap, Class A4

EARTHWORK AND RIPRAP NOTES

BACKFILL FOR COFFERDAM EXCAVATION SHALL CONSIST OF EXCAVATED MATERIAL FROM THE JOBSITE. THE MOISTURE CONTENT AND COMPACTION OF FILL SHALL BE TO THE SATISFACTION OF THE ENGINEER. BACKFILL SHALL BE CONSIDERED INCIDENTAL TO COFFERDAM EXCAVATION AND WILL NOT BE MEASURED FOR PAYMENT SEPERATELY.

THE FINISHED GRADE FOR RIPRAP SHALL ROUGHLY MATCH THE EXISTING GRADE. THE FINISHED GRADE SHALL FALL TOWARDS THE CHANNEL AND SHALL BE CROWNED AT CENTERLINE TO DRAIN AROUND THE ENDS OF THE PIER. ANY ADDITIONAL EXCAVATION NECESSARY TO ACHIEVE THESE GRADES SHALL BE CONSIDERED INCIDENTAL TO STONE RIPRAP, CLASS A4 AND SHALL NOT BE MEASURED FOR PAYMENT SEPERATELY.



MODEL: Riprap Detail (Sheet)
 FILE NAME: P:\DOT\Documents\DOT Office\District 9\ORD Project\78918\CADD\Drawings\78918\4-BSS Details.dgn

SECTION A-A

SECTION B-B

USER NAME = Ehren,Kirby	DESIGNED -	REVISED -
PLOT SCALE = 0.16666633 / in.	DRAWN -	REVISED -
PLOT DATE = 1/30/2023	CHECKED -	REVISED -
	DATE -	REVISED -

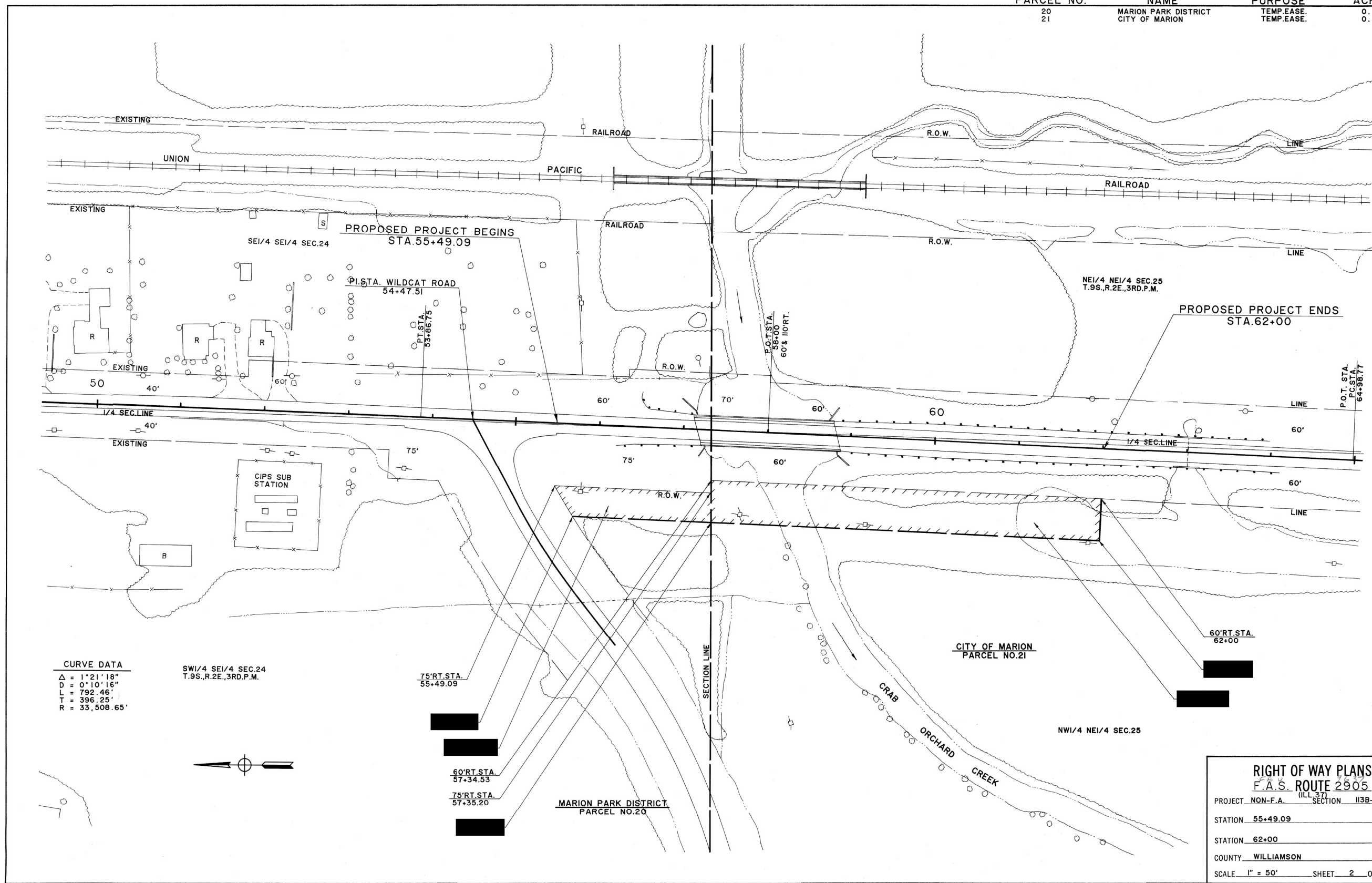
**STATE OF ILLINOIS
DEPARTMENT OF TRANSPORTATION**

RIPRAP DETAIL

SCALE: 1/8" = 1'-0" SHEET 7 OF 8 SHEETS STA. TO STA.

F.A.S RTE.	SECTION	COUNTY	TOTAL SHEETS	SHEET NO.
2887	D9 BRIDGE REPAIR 2022-6	WILLIAMSON	8	7
CONTRACT NO. 78918				
ILLINOIS FED. AID PROJECT				

PARCEL NO.	NAME	PURPOSE	ACREAGE
20	MARION PARK DISTRICT	TEMP.EASE.	0.141 A
21	CITY OF MARION	TEMP.EASE.	0.533 A



CURVE DATA
 $\Delta = 1^{\circ}21'18''$
 $DD = 0^{\circ}10'16''$
 $LT = 792.46'$
 $T = 396.25'$
 $R = 33,508.65'$

SW1/4 SE1/4 SEC.24
 T.9S.,R.2E.,3RD.P.M.



DRAWN BY *J. Kirby* 5-12-95

RIGHT OF WAY PLANS
F.A.S. ROUTE 2905
 PROJECT NON-F.A. SECTION 113B-1
 STATION 55+49.09
 STATION 62+00
 COUNTY WILLIAMSON
 SCALE 1" = 50' SHEET 2 OF 2

R-99-005-95

FOR INFORMATION ONLY - TEMPORARY EASEMENT DOES NOT APPLY TO CONTRACT 78918

MODEL: Existing ROW (Sheet)
 FILE NAME: R:\Projects\2002\2887\DOT\Office\Drawings\DOT\Office\Drawings\DOT\Drawings\2887\2887-1\2887-1-2.dwg

USER NAME = Ehren,Kirby	DESIGNED -	REVISED -
	DRAWN -	REVISED -
PLOT SCALE = 0.16666633 / in.	CHECKED -	REVISED -
PLOT DATE = 1/9/2023	DATE -	REVISED -

STATE OF ILLINOIS
DEPARTMENT OF TRANSPORTATION

EXISTING ROW SHEET
FOR INFORMATION ONLY

SCALE NO SCALE SHEET 8 OF 8 SHEETS STA. TO STA.

F.A.S. RTE.	SECTION	COUNTY	TOTAL SHEETS	SHEET NO.
2887	D9 BRIDGE REPAIR 2022-6	WILLIAMSON	8	8
CONTRACT NO. 78918				
ILLINOIS FED. AID PROJECT				