

RTE.	SECTION	COUNTY	TOTAL SHEETS	SHEET NO.
CH 42	19-00078-02-BR	IROQUOIS	24	1
FED. ROAD DIST. NO. 7 ILLINOIS		CONTRACT NO. 87793		

INDEX OF SHEETS

SHEET NO.	DESCRIPTION
1	COVER SHEET
2	GENERAL NOTES, TYPICAL SECTIONS, PAVEMENT DESIGN INFORMATION, DETAILS
3	SUMMARY OF QUANTITIES, SCHEDULES OF QUANTITIES
4	TRAFFIC CONTROL PLAN
5	EROSION CONTROL PLAN
6	PLAN AND PROFILE
7-18	STRUCTURE PLANS
19-24	CROSS SECTIONS

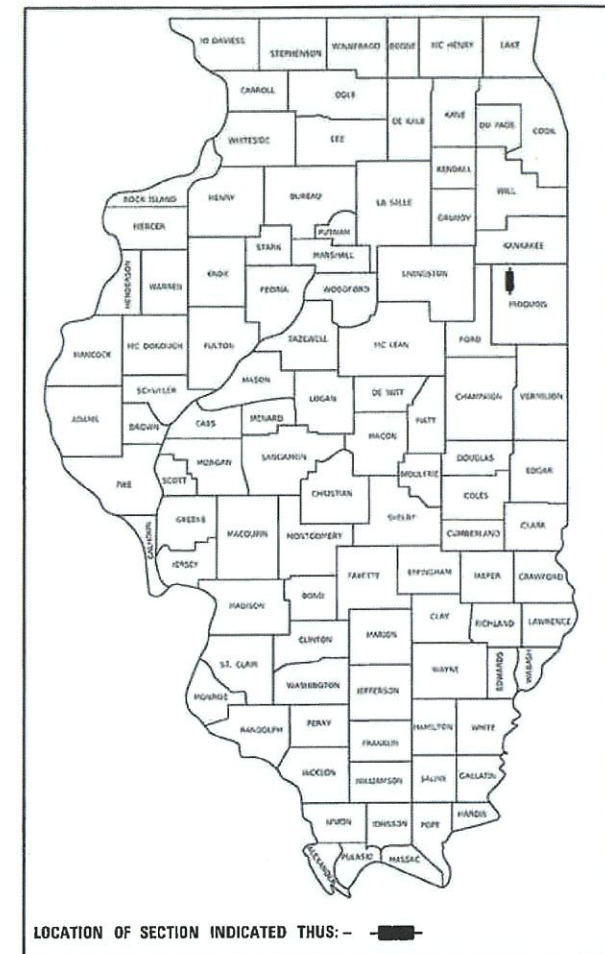
04-28-2023 LETTING ITEM 132

**STATE OF ILLINOIS
DEPARTMENT OF TRANSPORTATION**

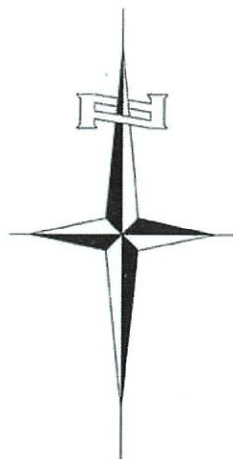
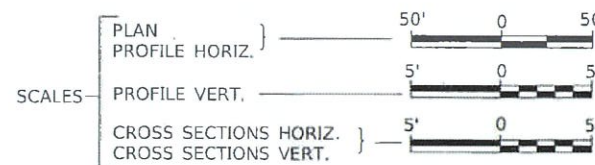
**PLANS FOR PROPOSED
SURFACE TRANSPORTATION PROGRAM-BRIDGE
IROQUOIS COUNTY
SECTION 19-00078-02-BR
COUNTY HIGHWAY 42
OVER BRANCH OF PRAIRIE CREEK
PROJECT NO. YM2X(032)
JOB NUMBER C-93-007-23**

HIGHWAY STANDARDS (INCLUDED IN PROPOSAL)

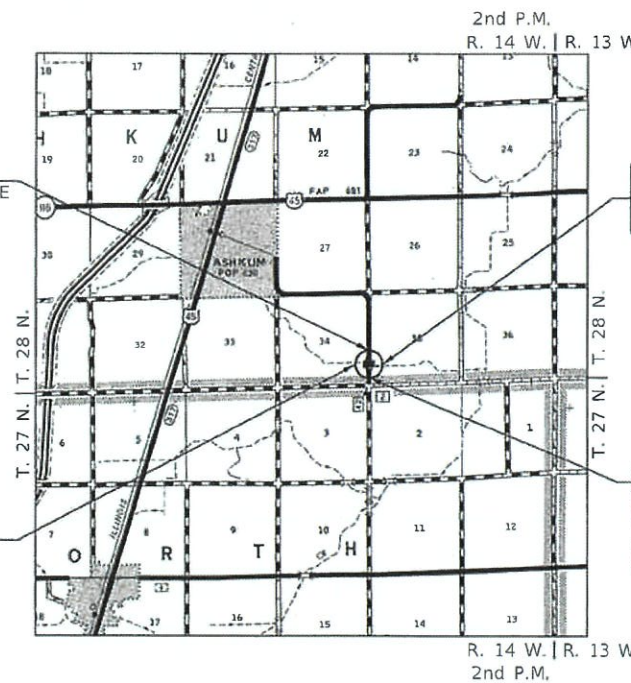
- 00001-08 STANDARD SYMBOLS, ABBREVIATIONS AND PATTERNS
- 280001-07 TEMPORARY EROSION CONTROL SYSTEMS
- 515001-04 NAME PLATE FOR BRIDGES
- 701901-08 TRAFFIC CONTROL DEVICES
- 725001-01 OBJECT AND TERMINAL MARKERS
- BLR 21-9 TYPICAL APPLICATION OF TRAFFIC CONTROL DEVICES FOR CONSTRUCTION ON RURAL LOCAL HIGHWAYS
- BLR 24-2 MAILBOX TURNOUT FOR LOCAL ROADS



LOCATION OF SECTION INDICATED THUS: - - -
PRINTED BY THE AUTHORITY OF THE STATE OF ILLINOIS



PROPOSED STRUCTURE SN 038-3205
SINGLE SPAN 27" PPC DK BM SUPERSTRUCTURE
ON CONCRETE SPILL-THRU ABUTMENTS,
60'-0" BK TO BK, 30'-0" O TO O DECK,
SKEWED 15° LT. AHEAD.



SECTION 19-00078-02-BR
ENDS
STATION 22+50.00

EXISTING STRUCTURE SN 038-0157
SINGLE SPAN CONCRETE SLAB BRIDGE ON
CLOSED ABUTMENTS WITH CONCRETE WINGWALLS.
±26'-5" BK TO BK, ±27'-2" O TO O DECK, NO SKEW.
(TO BE REMOVED)

SECTION 19-00078-02-BR
BEGINS
STATION 17+50.00

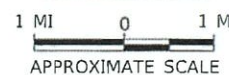
UTILITY COMPANIES

FRONTIER COMMUNICATION
BLOOMINGTON, ILLINOIS

EASTERN ILLINI ELECTRIC COOP
PAXTON, ILLINOIS

J.U.L.I.E.
JOINT UTILITY LOCATION INFORMATION FOR EXCAVATION
1-800-892-0123
OR 811

LOCATION MAP



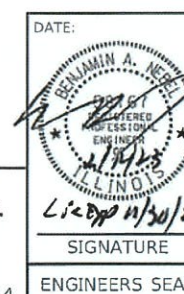
NET LENGTH OF PROJECT = 500.00 FEET = 0.095 MILES

DESIGN CLASSIFICATION: LOCAL ROAD
DESIGN ADT = 100 (2022)
DESIGN SPEED = 30 MPH

CONTRACT NO. 87793

Hutchison Engineering, Inc.
JACKSONVILLE-SHOREWOOD
PEORIA-QUAD CITIES-CARBONDALE

2023 JOB#4814



APPROVED	<u>Feb 15,</u>	2023
<i>[Signature]</i> IROQUOIS COUNTY ENGINEER		
PASSED	<u>FEBRUARY 24,</u>	2023
<i>[Signature]</i> DISTRICT THREE ENGINEER OF LOCAL ROADS & STREETS		
Released For Bid Based on Limited Review	<u>FEBRUARY 24,</u>	2023
<i>[Signature]</i> REGION TWO ENGINEER STATE OF ILLINOIS DEPARTMENT OF TRANSPORTATION		

FILE NAME: W0814 - CH 42 over Branch of Prairie Creek, Iroquois County, Illinois, Section 19-00078-02-BR

SUMMARY OF QUANTITIES				
CODE NO.	ITEM	UNIT	QUANTITY	
20200100	EARTH EXCAVATION	CU YD	810	
20300100	CHANNEL EXCAVATION	CU YD	400	
28000250	TEMPORARY EROSION CONTROL SEEDING	POUND	500	
28000305	TEMPORARY DITCH CHECKS	FOOT	48	
28000500	INLET AND PIPE PROTECTION	EACH	2	
28100209	STONE RIPRAP, CLASS A5	TON	350	
28200200	FILTER FABRIC	SQ YD	320	
SP	40200800	AGGREGATE SURFACE COURSE, TYPE B	TON	1,083
SP	50100100	REMOVAL OF EXISTING STRUCTURES	EACH	1
	50105220	PIPE CULVERT REMOVAL	FOOT	70
	50200100	STRUCTURE EXCAVATION	CU YD	55
	50300225	CONCRETE STRUCTURES	CU YD	26.3
	50300280	CONCRETE ENCASEMENT	CU YD	2.6
	50400505	PRECAST PRESTRESSED CONCRETE DECK BEAMS (27" DEPTH)	SQ FT	1,743
	50800105	REINFORCEMENT BARS	POUND	2,930
	51200957	FURNISHING METAL SHELL PILES 12"x0.250"	FOOT	440
	51202305	DRIVING PILES	FOOT	440
	51203200	TEST PILE METAL SHELLS	EACH	2
	51500100	NAME PLATES	EACH	1
SP	542D0223	PIPE CULVERTS, CLASS D, TYPE 1 18"	FOOT	44
SP	542D0229	PIPE CULVERTS, CLASS D, TYPE 1 24"	FOOT	46
	67100100	MOBILIZATION	L SUM	1
*	72501000	TERMINAL MARKER - DIRECT APPLIED	EACH	4
* SP	X2300017	STEEL RAILING, TYPE SM (SPECIAL)	FOOT	120
BDE, SP	X2501000	SEEDING, CLASS 2 (SPECIAL)	ACRE	0.60

SP: SEE SPECIAL PROVISIONS
BDE: SEE BDE SPECIAL PROVISIONS

CONSTRUCTION CODE: 0010

*SPECIALTY ITEMS

EARTHWORK SUMMARY					
STATION TO STATION	EARTH EXCAVATION	CHANNEL EXCAVATION	STRUCTURE EXCAVATION	FILL	WASTE (SHORTAGE)
RDWY 17+50.00 - 19+70.00	418			196	118
RDWY 20+30.00 - 22+50.00	393			49	246
CHANNEL		400			
STRUCTURE			55		
TOTAL	811	400	55	244	364
USE	810	400	55	-	365

(@ 25% SHRINKAGE)

AGGREGATE SURFACE COURSE, TYPE B 140#/CF					
STATION TO STATION	THICKNESS	WIDTH	LENGTH	TON	
17+50.00 - 18+00.00	1.00'	23.76' AVG.	50.00'	83	
18+00.00 - 19+70.00	1.00' & VARIES	25.00'	170.00'	402	
ABUTMENT BACKFILL - SEE SPECIAL PROVISIONS				34	
20+30.00 - 22+00.00	1.00' & VARIES	25.00'	170.00'	408	
22+00.00 - 22+50.00	1.00'	25.00' AVG.	50.00'	88	
ENTR. 19+40.00 LT	0.50'	26.00' AVG.	31.00'	33	
ENTR. 19+40.00 RT	0.50'	26.00' AVG.	33.00'	35	
TOTAL				1,083	

PIPE CULVERTS, CLASS D, TYPE 1 18"		
STATION	SIDE	FOOT
19+40	RIGHT	44
TOTAL		44

PIPE CULVERTS, CLASS D, TYPE 1 24"		
STATION	SIDE	FOOT
19+40	LEFT	46
TOTAL		46

PIPE CULVERT REMOVAL			
STATION	SIZE	SIDE	FOOT
19+64	24"	LEFT	50
19+60	18"	RIGHT	20
TOTAL			70

TEMPORARY DITCH CHECKS		
STATION	SIDE	FOOT
19+70	RIGHT	12
19+80	LEFT	12
20+16	RIGHT	12
20+34	LEFT	12
TOTAL		48

INLET AND PIPE PROTECTION		
STATION	SIDE	EACH
19+15	LEFT	1
19+18	RIGHT	1
TOTAL		2

MODEL: I:\MODEL\NAME: CH 42 over Branch of Prairie Creek - IROQUOIS\CADD\CADD_Sheets\4814-0001.dgn

USER NAME = JSavage	DESIGNED - YP	REVISED - _____
DRAWN - YP	CHECKED - JPS	REVISED - _____
PLOT SCALE = 100,0000' / in.	DATE - 11/4/2022	REVISED - _____
PLOT DATE = 2/13/2023		

**IROQUOIS COUNTY
COUNTY HIGHWAY 42 (1100E ROAD)
OVER BRANCH TO PRAIRIE CREEK**

**SUMMARY OF QUANTITIES,
SCHEDULES OF QUANTITIES**

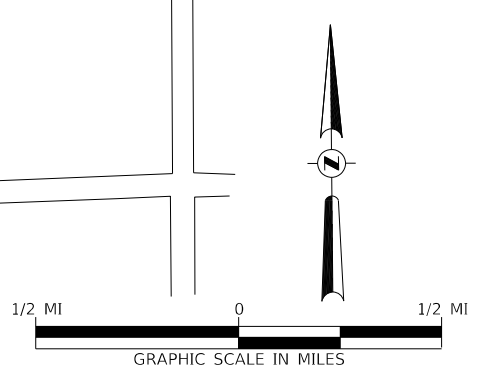
SCALE: NONE SHEET 1 OF 1 SHEETS STA. 17+50.00 TO STA. 22+50.00

RT.	SECTION	COUNTY	TOTAL SHEETS	SHEET NO.
CH 42	19-00078-02-BR	IROQUOIS	24	3
CONTRACT NO. 87793				
FED. ROAD DIST. NO. 7		ILLINOIS	FED. AID PROJECT NO. YM2X(032)	

MODEL: I:\00\BEN\NAME\FILE NAME: 19-00078-02-BR - CH 42 over Branch of Prairie Creek (I:\00\BEN\NAME\CADD\CADD_Sheets\1814-3001.dwg)



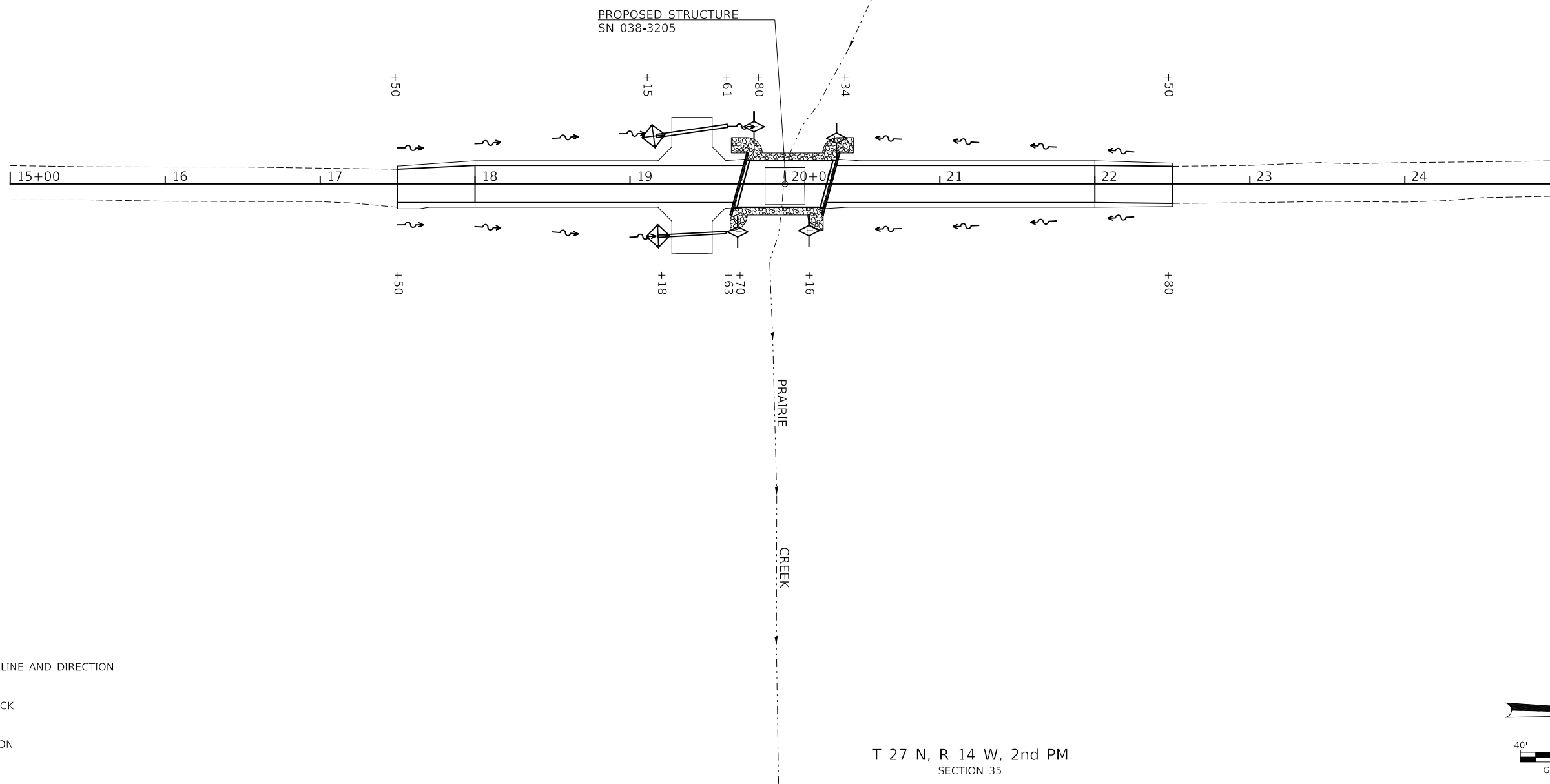
- 1 ROAD CLOSED
¾ MILE AHEAD
LOCAL TRAFFIC ONLY
R11-3
- 2 ROAD CLOSED
1¼ MILES AHEAD
LOCAL TRAFFIC ONLY
R11-3
- 3 ROAD CLOSED
2 MILES AHEAD
LOCAL TRAFFIC ONLY
R11-3
- 4 ROAD CLOSED
AHEAD
W20-3
- 5 ROAD CLOSED
500 FT
W20-3
- 6 TYPE III BARRICADES
SEE STANDARD BLR 21
AND SPECIAL PROVISIONS



<p style="text-align: center;">IROQUOIS COUNTY COUNTY HIGHWAY 42 (1100E ROAD) OVER BRANCH TO PRAIRIE CREEK</p>				<p>TRAFFIC CONTROL PLAN</p>				<p>SCALE: NONE</p>		<p>SHEET 1 OF 1 SHEETS</p>		<p>STA. 17+50.00 TO STA. 22+50.00</p>		<p>FED. ROAD DIST. NO. 7 ILLINOIS</p>		<p>FED. AID PROJECT NO. YM2X(032)</p>	
USER NAME	= JSavage	DESIGNED	- YP	REVISED	-	RT.	SECTION	COUNTY	TOTAL SHEETS	SHEET NO.							
DRAWN	- YP	CHECKED	- JPS	REVISED	-	CH 42	19-00078-02-BR	IROQUOIS	24	4							
PLOT SCALE	= 2,0000' / in.	DATE	- 11/3/2022	REVISED	-			CONTRACT NO. 87793									
PLOT DATE	= 2/10/2023																

T 28 N, R 14 W, 2nd PM
SECTION 34

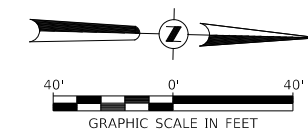
NOTE: TEMPORARY EROSION CONTROL SEEDING SHALL BE DONE IN ACCORDANCE WITH ARTICLE 280.04 OF THE STANDARD SPECIFICATIONS



T 27 N, R 14 W, 2nd PM
SECTION 35

LEGEND

- SPECIAL DITCH - FLOW LINE AND DIRECTION
- TEMPORARY DITCH CHECK
- INLET & PIPE PROTECTION



PLAN	SURVEYED	DATE
NOTE BOOK NO.	PLOTTED	
	ALIGNMENT CHECKED	
	GRADE CHECKED	
	CADD FILE NAME	

PROFILE	SURVEYED	DATE
NOTE BOOK NO.	PLOTTED	
	GRADES CHECKED	
	STRUCTURE NOTATION CHECKED	

MODEL: S:\MODEL\NAMES
FILE NAME: V:\31814 - CH 42 - over Branch of Prairie Creek (Iroquois)\CADD\CADD Sheets\4814-001.dgn

USER NAME = JSavage	DESIGNED - YP	REVISED - _____
	DRAWN - YP	REVISED - _____
PLOT SCALE = 80.0000' / in.	CHECKED - JPS	REVISED - _____
PLOT DATE = 2/13/2023	DATE - 11/3/2022	REVISED - _____

**IROQUOIS COUNTY
COUNTY HIGHWAY 42 (1100E ROAD)
OVER BRANCH OF PRAIRIE CREEK**

EROSION CONTROL PLAN

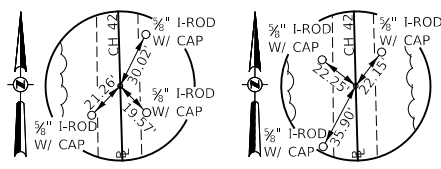
SCALE: 1"=30' SHEET 1 OF 1 SHEETS STA. 17+50.00 TO STA. 22+50.00

RTE.	SECTION	COUNTY	TOTAL SHEETS	SHEET NO.
CH 42	19-00078-02-BR	IROQUOIS	24	5
CONTRACT NO. 87793				
FED. ROAD DIST. NO. 7	ILLINOIS	FED. AID PROJECT NO. YM2X(032)		

T 28 N, R 14 W, 2nd PM
SECTION 34

ROBERT E. MERKLE & MARILYN D. MERKLE,
AS CO-TRUSTEES OF THE MERKLE FAMILY TRUST

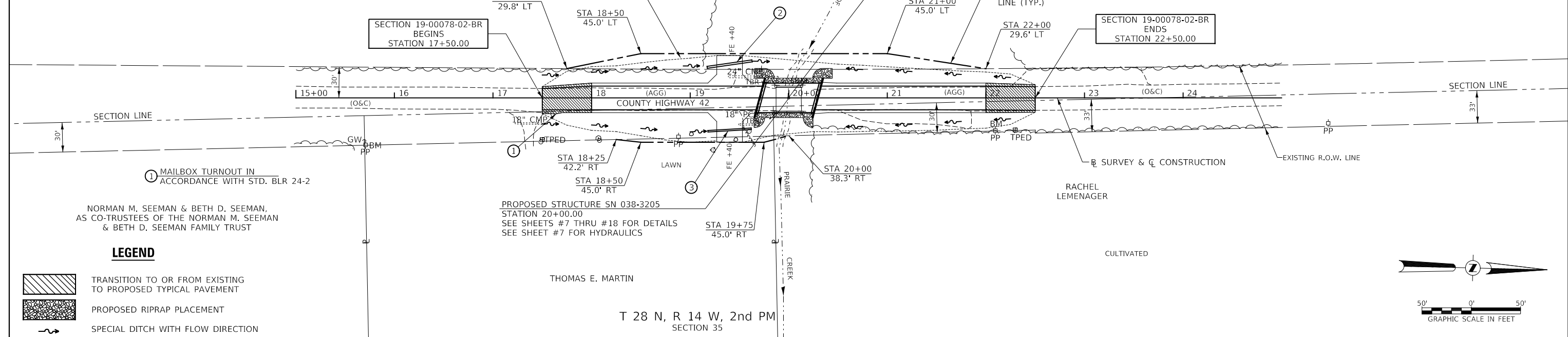
- ② STA 19+40 LT
PROPOSED PIPE CULVERT
CLASS D, TYPE 1, 24" x 46'
USFL = 634.33, STA 19+17.24, 31.0' LT
DSFL = 634.11, STA 19+62.67, 37.6' LT
- ③ STA 19+40 RT
PROPOSED PIPE CULVERT
CLASS D, TYPE 1, 18" x 44'
USFL = 633.82, STA 19+18.03, 33.7' RT
DSFL = 633.60, STA 19+61.97, 31.5' RT



POT STA 15+00.00
MAG-NAIL
N: 1,526,642.31
E: 1,097,852.39

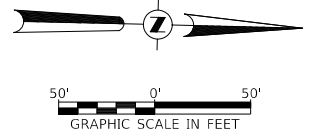
POT STA 24+99.93
MAG-NAIL
N: 1,527,641.86
E: 1,097,824.50

DATE	
BY	
PLAN	
NO.	
DATE	
BY	
PROFILE	
NO.	



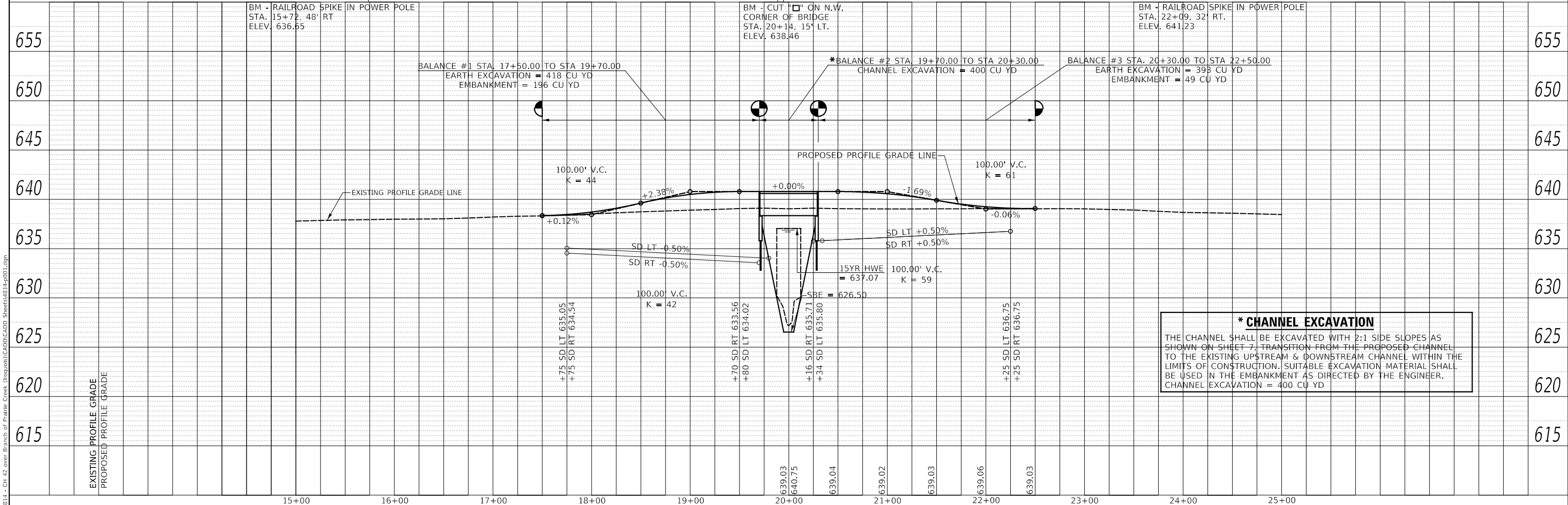
LEGEND

- TRANSITION TO OR FROM EXISTING TO PROPOSED TYPICAL PAVEMENT
- PROPOSED RIPRAP PLACEMENT
- SPECIAL DITCH WITH FLOW DIRECTION



T 28 N, R 14 W, 2nd PM
SECTION 35

DATE	
BY	
PROFILE	
NO.	
DATE	
BY	
PROFILE	
NO.	



*** CHANNEL EXCAVATION**
THE CHANNEL SHALL BE EXCAVATED WITH 2:1 SIDE SLOPES AS SHOWN ON SHEET 7, TRANSITION FROM THE PROPOSED CHANNEL TO THE EXISTING UPSTREAM & DOWNSTREAM CHANNEL WITHIN THE LIMITS OF CONSTRUCTION. SUITABLE EXCAVATION MATERIAL SHALL BE USED IN THE EMBANKMENT AS DIRECTED BY THE ENGINEER.
CHANNEL EXCAVATION = 400 CU YD

USER NAME = JSavage	DESIGNED - YP	REVISED -	IROQUOIS COUNTY COUNTY HIGHWAY 42 (1100E ROAD) OVER BRANCH OF PRAIRIE CREEK	PLAN AND PROFILE			RTE.	SECTION	COUNTY	TOTAL SHEETS	SHEET NO.
PLOT SCALE = 100,0000' / in.	DRAWN - YP	REVISED -		SCALE: 1"=50'	SHEET	1 OF 1 SHEETS	CH 42	19-00078-02-BR	IROQUOIS	24	6
PLOT DATE = 2/15/2023	CHECKED - JPS	REVISED -		STA. 17+50.00 TO STA. 22+50.00	FED. ROAD DIST. NO. 7 ILLINOIS			CONTRACT NO. 87793			
	DATE - 11/3/2022	REVISED -			FED. AID PROJECT NO. YM2X(032)						

B.M.: RR Spike in PP
Sta. 15+72, 48' Rt
Elev. 636.65

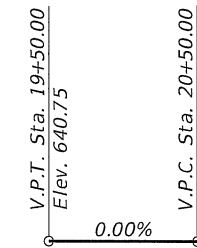
B.M.: Cut "□" on N.W. Corner of Bridge
Sta. 20+14, 15' Lt
Elev. 638.46

B.M.: RR Spike in PP
Sta. 22+09, 32' Rt
Elev. 641.23

BRANCH OF PRAIRIE CREEK
BUILT 202 BY
IROQUOIS COUNTY
SEC. 19-00078-02-BR
C.H. 42 STATION 20+00.00
F.A. PROJ. NO. YM2X(032)
STR. NO. 038-3205 LOADING HL-93

NAME PLATE

Locate Name Plate at S.E. Wingwall
Corner of Bridge (See Std. 515001)



GENERAL NOTES

A Corrosion Inhibitor shall be used in the concrete for Precast Prestressed Concrete Deck Beams according to Articles 1020.05(b)(10) and 1021.07 of the Standard Specifications.
Reinforcement Bars designated (E) shall be epoxy coated.
Layout of the slope protection system may be varied in the field to suit ground conditions as directed by the Engineer.
The top surface of the beams shall be finished according to the IDOT Manual for Fabrication of Precast Prestressed Concrete Products.
Excavation behind existing abutment walls shall be performed to balance front and back soil pressure before removing the existing superstructure.

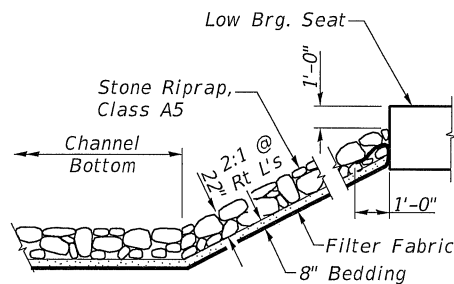
Existing Structure:

A single span concrete slab superstructure supported on concrete closed abutments with concrete wingwalls. The structure is 26'-5" back to back of abutments, 27'-2" out to out deck, and is not skewed.
Str. No. 038-0157

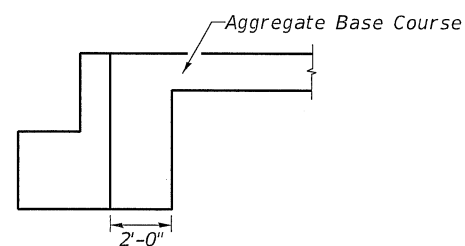
Salvage: None

Road to be closed to traffic during construction.

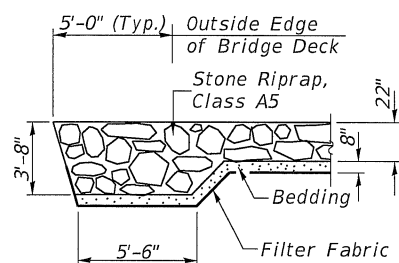
*Terminal Marker-Direct Applied to be placed on Curled End Sections in accordance with Std. 725001



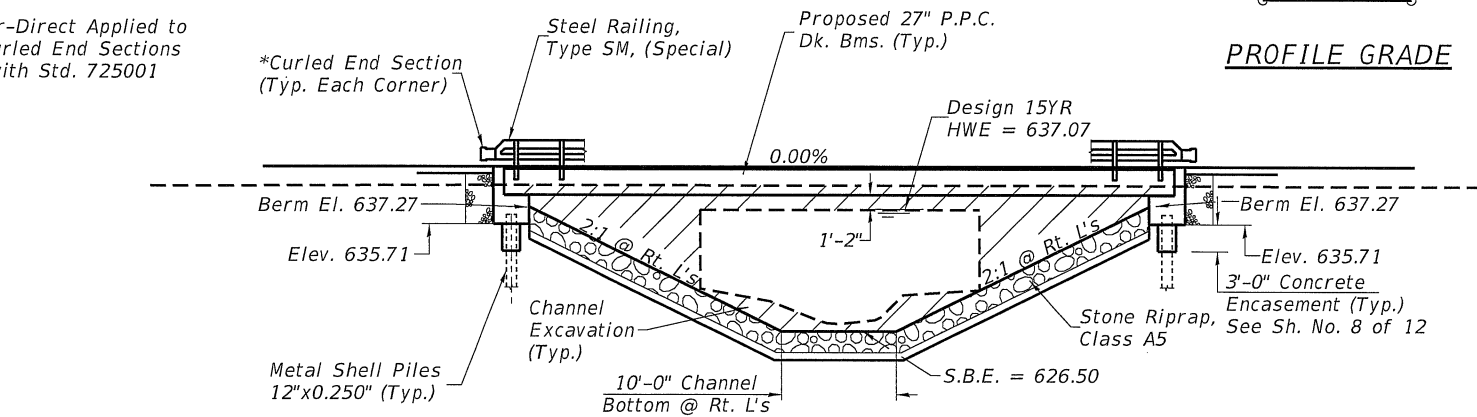
STONE RIPRAP DETAIL



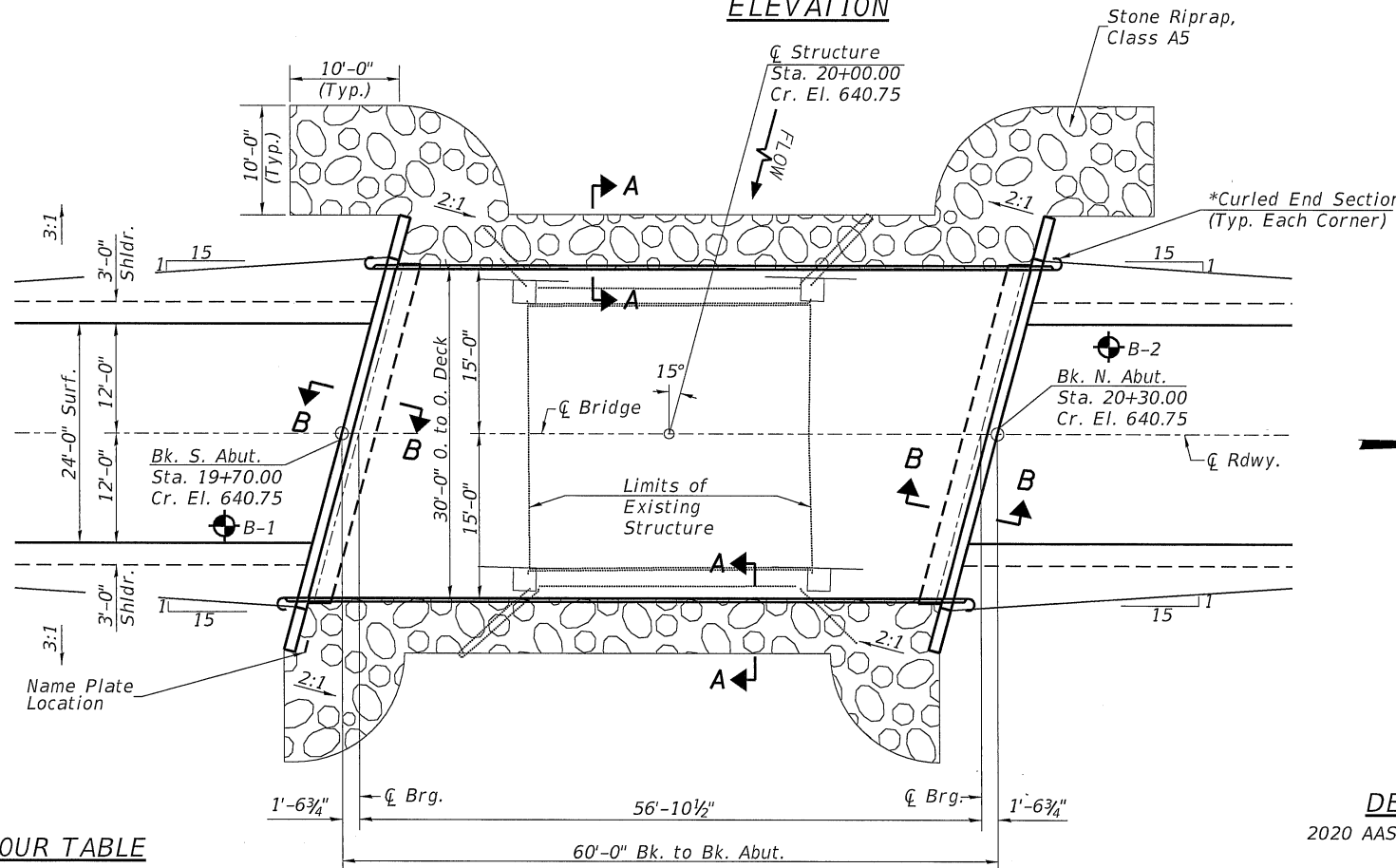
SECTION B-B
(See Special Provisions)



SECTION A-A



ELEVATION



PLAN

DESIGN SCOUR TABLE

Location	S. Abut.	N. Abut.
Design Scour Elevation	635.71	635.71

WATERWAY INFORMATION

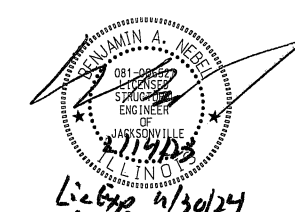
Drainage Area = 4.63 Sq. Mi.		Low Grade Elev. = 637.79 @ Sta. 15+00.00							
Flood Yr.	Freq.	Q C.F.S.	Opening Sq. Ft. Exist.	Prop.	Nat. H.W.E.	Head - Ft. Exist.	Prop.	Exist.	Prop.
Design	15	905	197	317	637.07	0.03	0.10	637.10	637.17
Base	100	1,450	197	381	638.69	0.11	0.09	638.80	638.78

TOTAL BILL OF MATERIAL

ITEM	UNIT	SUPER	SUB	TOTAL
Channel Excavation	CU YD	—	400	400
Stone Riprap, Class A5	TON	—	350	350
Filter Fabric	SQ YD	—	320	320
① Removal of Existing Structures	EACH	—	—	1
Structure Excavation	CU YD	—	55	55
Concrete Structures	CU YD	—	26.3	26.3
Concrete Encasement	CU YD	—	2.6	2.6
Precast Prestressed Concrete Deck Beams (27" Depth)	SQ FT	1,743	—	1,743
Reinforcement Bars	POUND	—	2,930	2,930
Furnishing Metal Shell Piles 12"x0.250"	FOOT	—	440	440
Driving Piles	FOOT	—	440	440
Test Pile Metal Shells	EACH	—	2	2
Name Plates	EACH	—	1	1
Terminal Marker - Direct Applied	EACH	4	—	4
Steel Railing, Type SM (Special)	FOOT	120	—	120

① See Special Provisions

I certify that to the best of my knowledge, information and belief, this bridge design is structurally adequate for the design loading shown on the plans. The design is an economical one for the style of structure and complies with requirements of the current AASHTO Standard Specification for Highway Bridges. This design complies with all requirements of the current AASHTO Guide Specifications for Seismic Design of highway bridges.



2/14/23
Illinois Structural No. 6527
Expires 11/30/2024

DESIGN SPECIFICATIONS

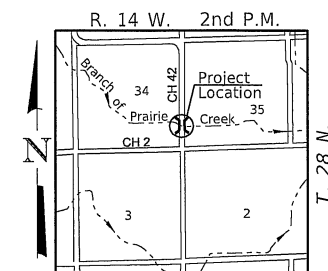
2020 AASHTO LRFD Bridge Design Specifications, 9th Edition

DESIGN STRESSES

(FIELD UNITS) (PRECAST PRESTRESSED UNITS)
f'c = 3,500 p.s.i. f'c = 6,000 p.s.i.
fy = 60,000 p.s.i. (Rein.) f'ci = 5,000 p.s.i.
f's = 270,000 p.s.i. (1/2" Strands)
f'si = 201,960 p.s.i. (1/2" Strands)

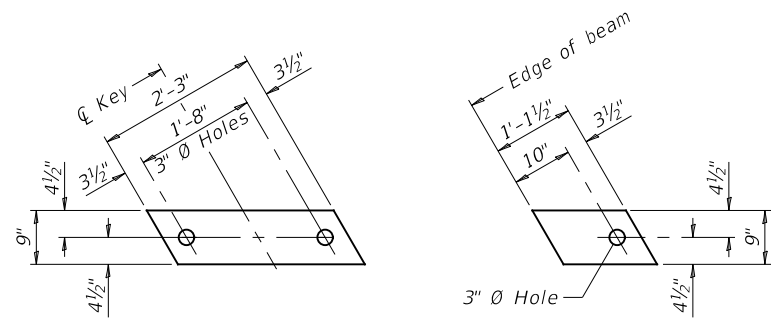
LOADING HL-93

Allow 50#/sq. ft. for future wearing surface.



LOCATION SKETCH

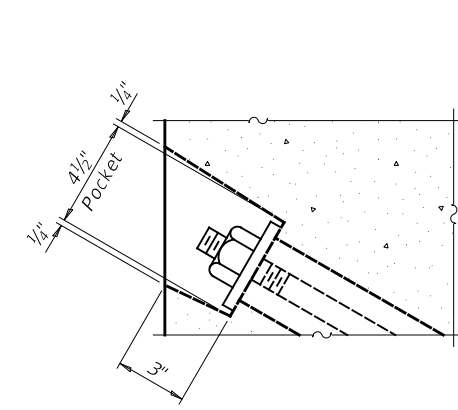
MODEL: 4814-b001.dgn	USER NAME = JSavage	DESIGNED - YP	REVISED -	IROQUOIS COUNTY COUNTY HIGHWAY 42 (1100E ROAD) OVER BRANCH OF PRAIRIE CREEK	GENERAL PLAN & ELEVATION	RTE. CH 42	SECTION 19-0078-00-BR	COUNTY IROQUOIS	TOTAL SHEETS 24	SHEET NO. 7	
	PLOT SCALE = 100.0000' / in.	CHECKED - JPS/BAN	REVISED -			SCALE: NONE	SHEET 1 OF 12 SHEETS	SN 038-3205		CONTRACT NO. 87793	
	PLOT DATE = 2/13/2023	DATE - 11/29/2022	REVISED -					FED. ROAD DIST. NO. 7 ILLINOIS		FED. AID PROJECT NO. YM2X(032)	



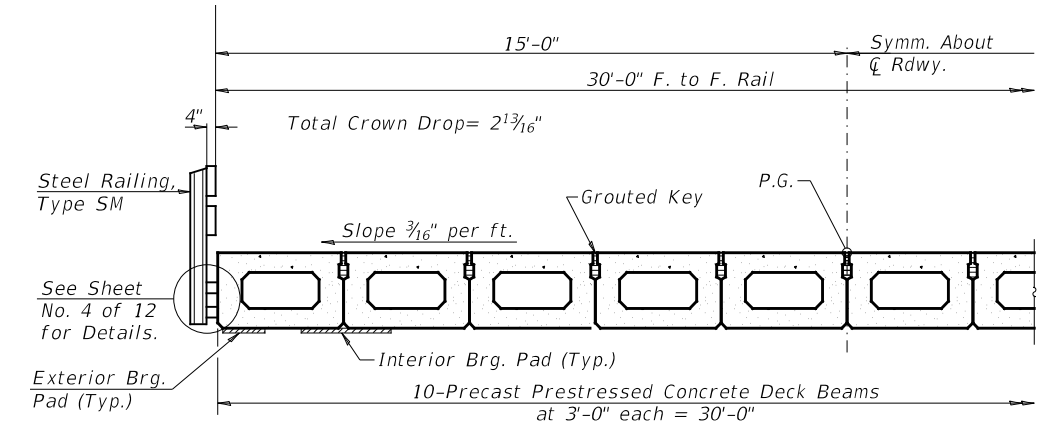
1/2" FABRIC BEARING PAD
(Interior) 18 Required

1/2" FABRIC BEARING PAD
(Exterior) 4 Required

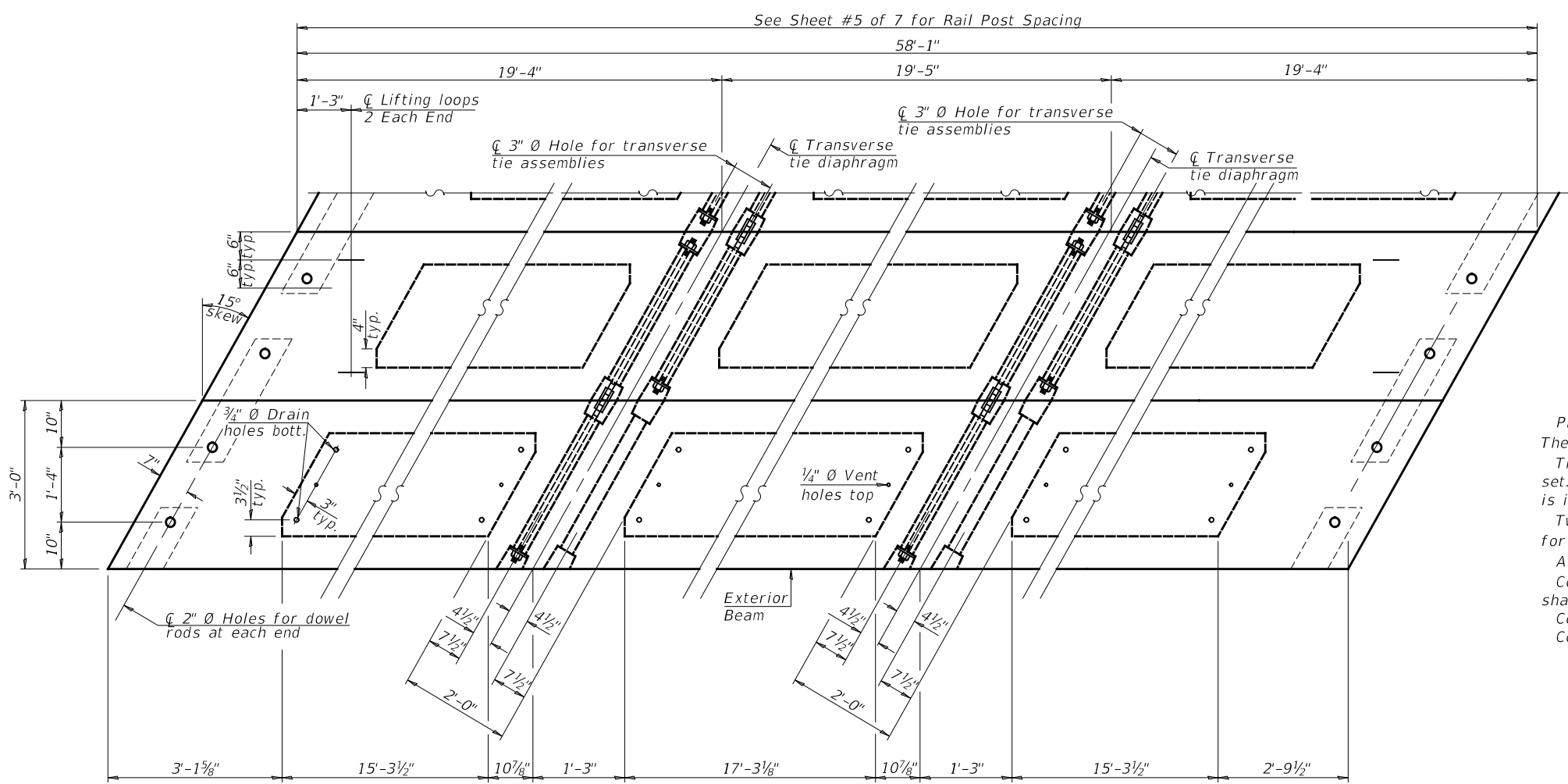
FIXED



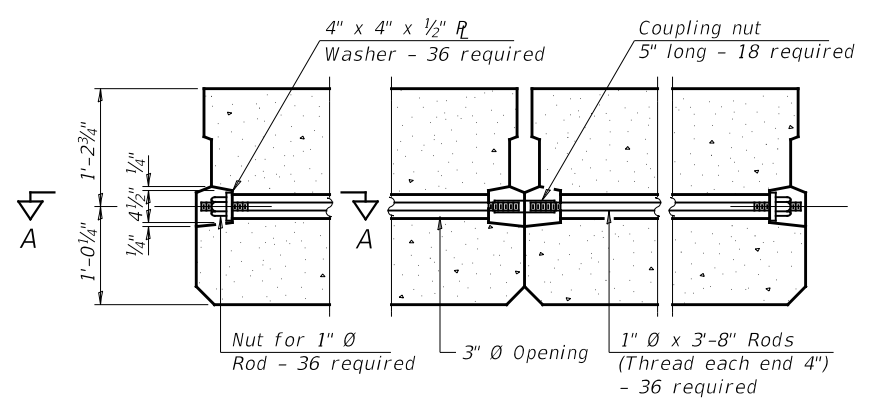
SECTION A-A



HALF CROSS SECTION



PLAN VIEW



TYPICAL TRANSVERSE TIE ASSEMBLY

NOTES

- Prestressing steel shall be uncoated high strength, low relaxation 7-wire strand, Grade 270. The nominal diameter shall be 1/2" and the nominal cross-sectional area shall be 0.153 sq. in.
- The 1" \emptyset rods in the transverse tie assembly shall be tightened to a snug fit and the threads set. Pockets on exterior faces of bridge shall be filled with grout after transverse tie assembly is in place.
- Two 1/8" fabric adjusting shims of the dimensions of the exterior bearing pad shall be provided for each bearing pad location.
- A minimum 2 1/2" \emptyset lifting pin shall be used to engage the lifting loops during handling.
- Corrosion Inhibitor, per Article 1020.05(b)(10) and 1021.07 of the Standard Specifications, shall be used in the concrete for precast prestressed concrete deck beams.
- Compressive strength of prestressed concrete, $f'c$, shall be 6000 psi.
- Compressive strength of prestressed concrete at release, $f'ci$, shall be 5000 psi.

BILL OF MATERIAL

Precast Prestressed Conc. Deck Bms. (27" depth)	Sq. Ft. 1,743
---	---------------

Note: Connect beams in pairs with the transverse tie configuration shown.

USER NAME = JSavage	DESIGNED - YP	REVISED - _____
DRAWN - YP	CHECKED - JPS/BAN	REVISED - _____
PLOT SCALE = 100,0000' / in.	DATE - 11/29/2022	REVISED - _____
PLOT DATE = 2/10/2023		

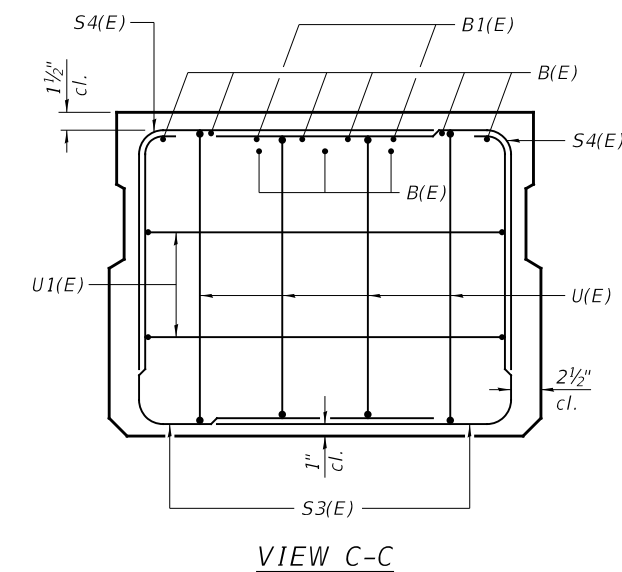
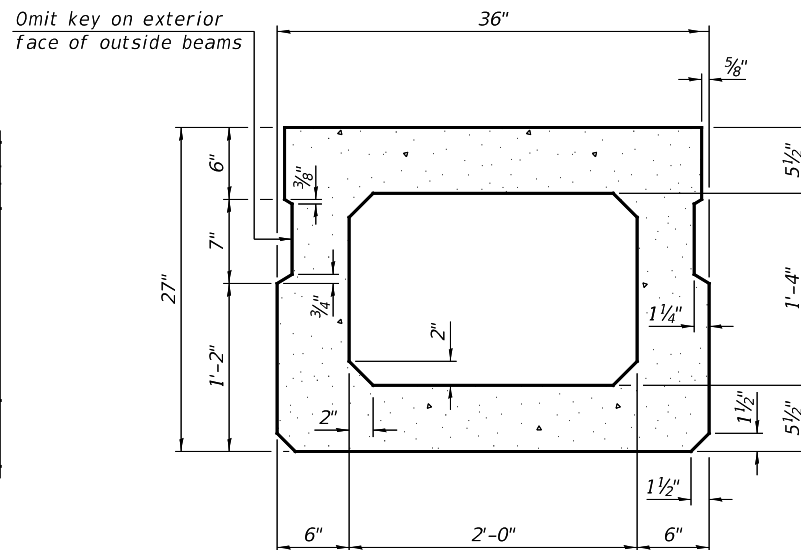
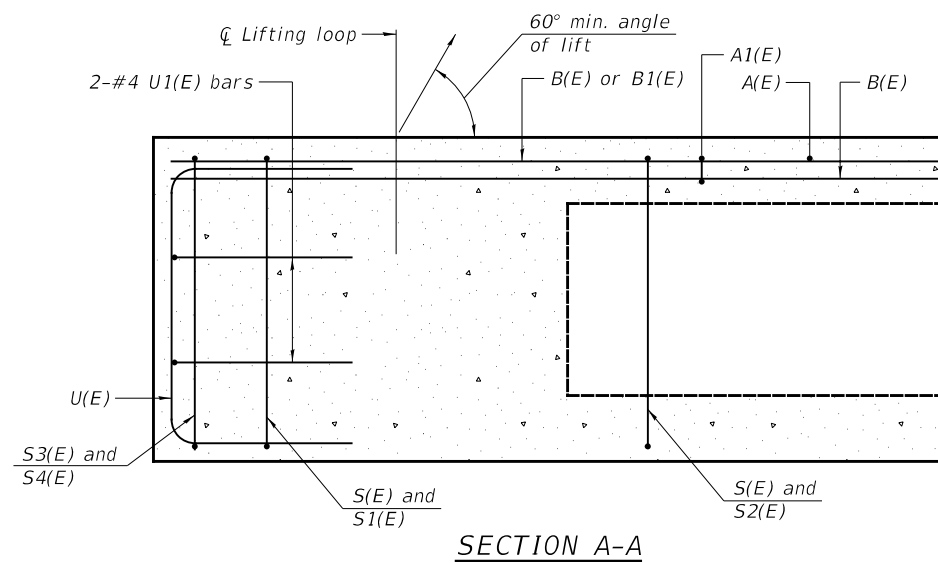
**IROQUOIS COUNTY
COUNTY HIGHWAY 42 (1100E ROAD)
OVER BRANCH OF PRAIRIE CREEK**

SUPERSTRUCTURE

SCALE: NONE SHEET 2 OF 12 SHEETS

RTE:	SECTION	COUNTY	TOTAL SHEETS	SHEET NO.
CH 42	19-0078-00-BR	IROQUOIS	24	8
	SN 038-3205		CONTRACT NO. 87793	
FED. ROAD DIST. NO. 7	ILLINOIS	FED. AID PROJECT NO. YM2X(032)		

MODEL FILE NAME: 4814-b002.dgn

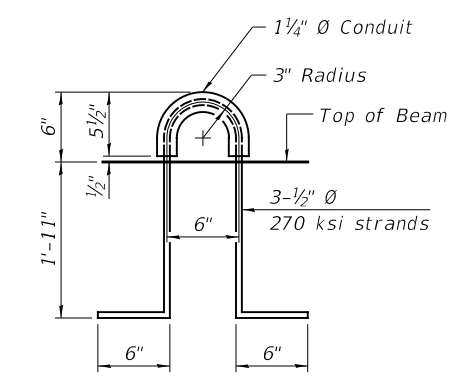
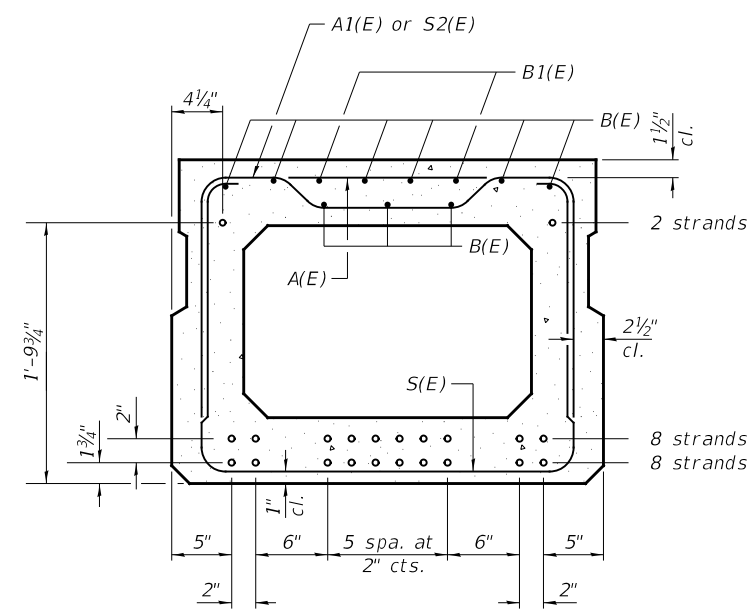
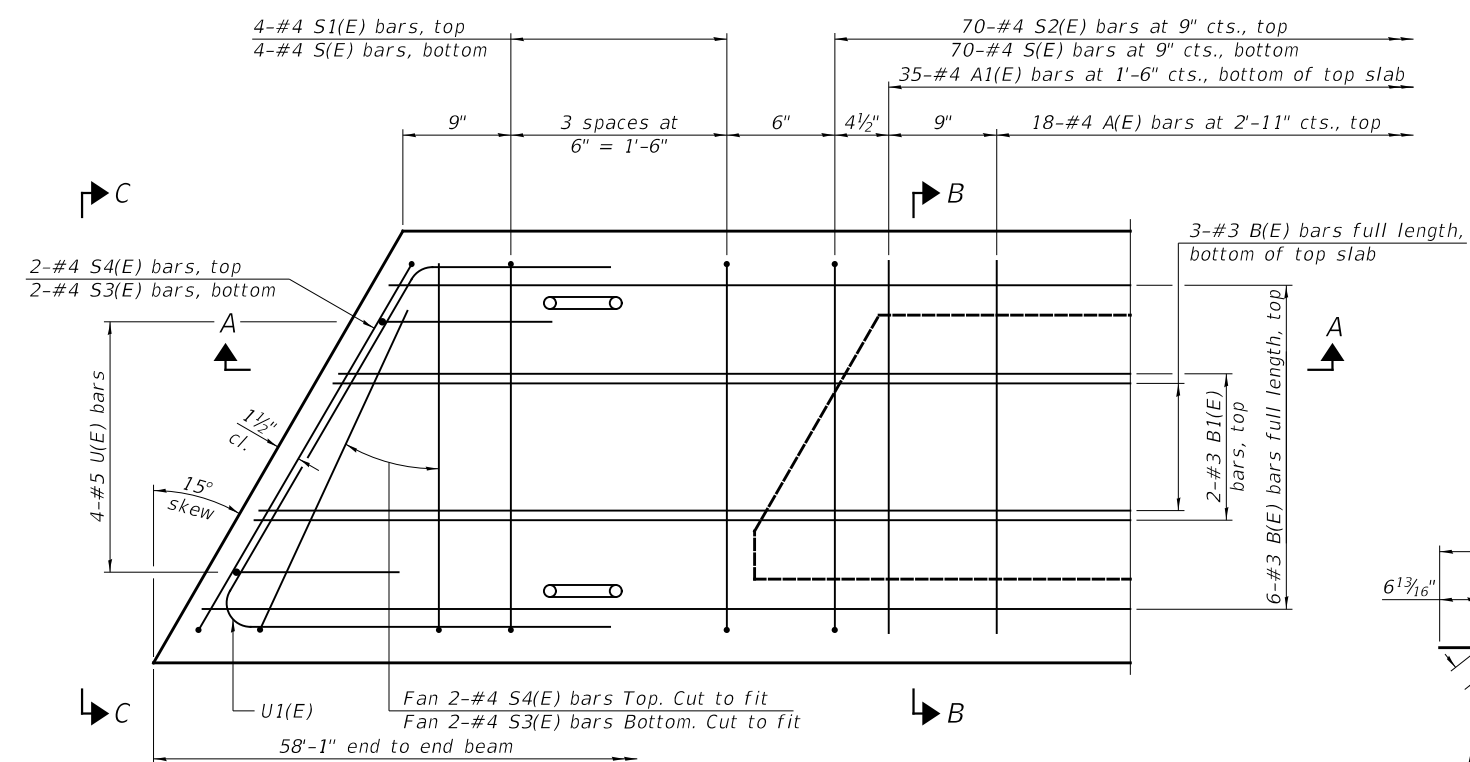


BAR LIST
ONE BEAM ONLY
(For information only)

Bar	No.	Size	Length	Shape
A(E)	18	#4	2'-7"	—
A1(E)	35	#4	2'-10"	—
B(E)	9	#3	57'-10"	—
B1(E)	4	#3	10'-0"	—
S(E)	78	#4	7'-5"	⌋
S1(E)	8	#4	5'-11"	⌋
S2(E)	70	#4	6'-2"	⌋
S3(E)	8	#4	5'-1"	⌋
S4(E)	8	#4	4'-4"	⌋
U(E)	8	#5	4'-6"	⌋
U1(E)	4	#4	5'-9"	⌋

Note:
See sheet 2 of 12 for additional details and Bill of Material.

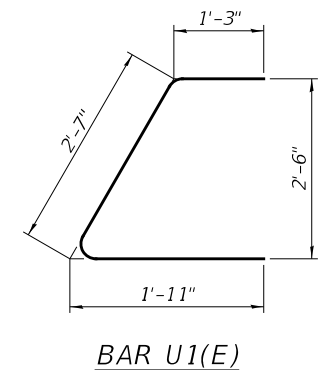
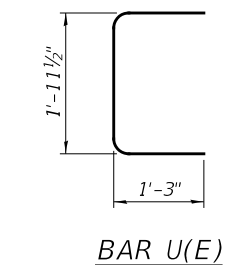
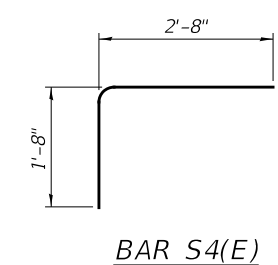
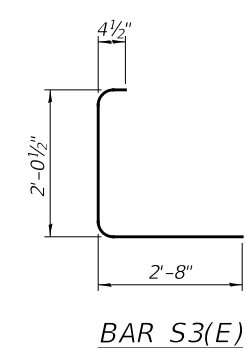
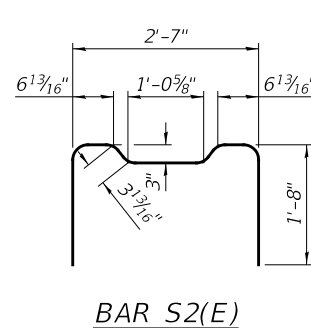
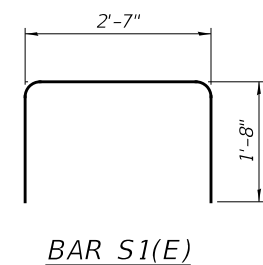
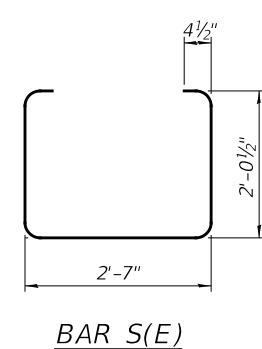
MINIMUM BAR LAP
#3 bar = 1'-6"

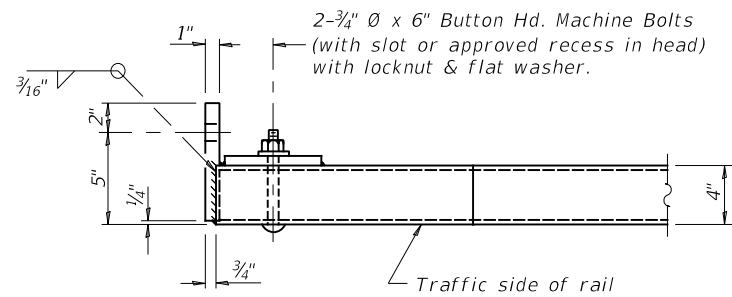
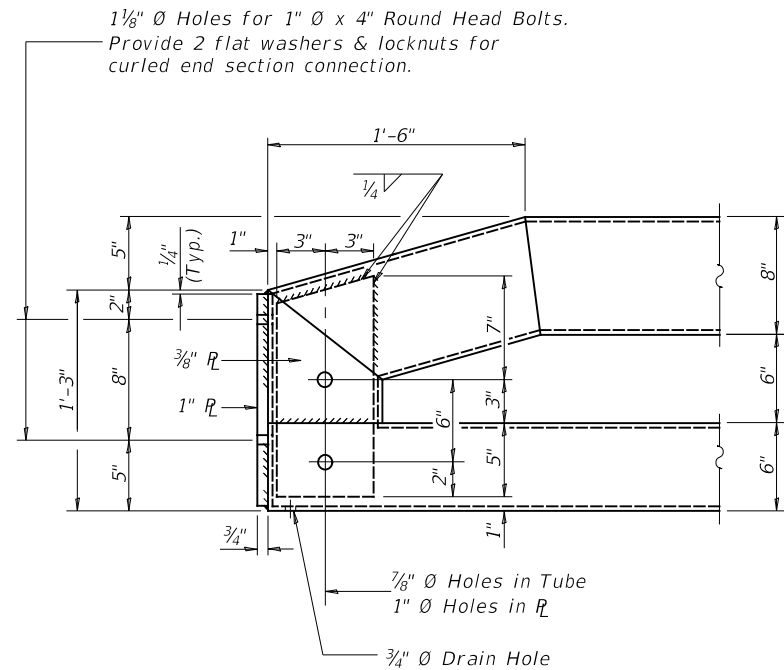


SECTION B-B
(Showing reinforcement and permissible strand locations)
18-1/2" Ø Strands Each Strand Stressed to 30,900 Lbs.
8-Strands 1 3/4" up, 8-Strands 3 3/4" up, 2-Strands 2 1/4" up.

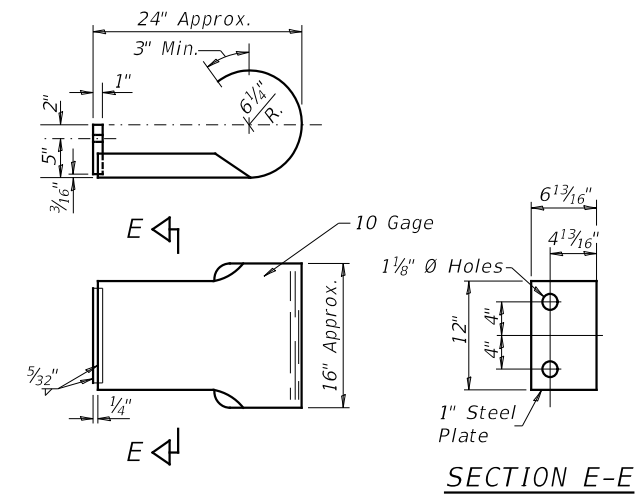
Note:
Place the number of strands specified in each row symmetrically about the centerline of beam in the permissible strand locations shown.

Note:
Spacing of S(E) and S2(E) bars may be adjusted up to 4" in the immediate area of the transverse tie diaphragms to miss the block outs for the transverse ties.





END OF RAIL DETAILS



CURLED END SECTION

(4 Req'd) Cost Included with Steel Bridge Rail, Type SM (Special).
Terminal Markers - Direct Applied shall be placed on
end of each Curled End Section. (Typ. Each Corner)

(Sheet 2 of 2)

MODEL:
FILE NAME:

4814-b005.dgn

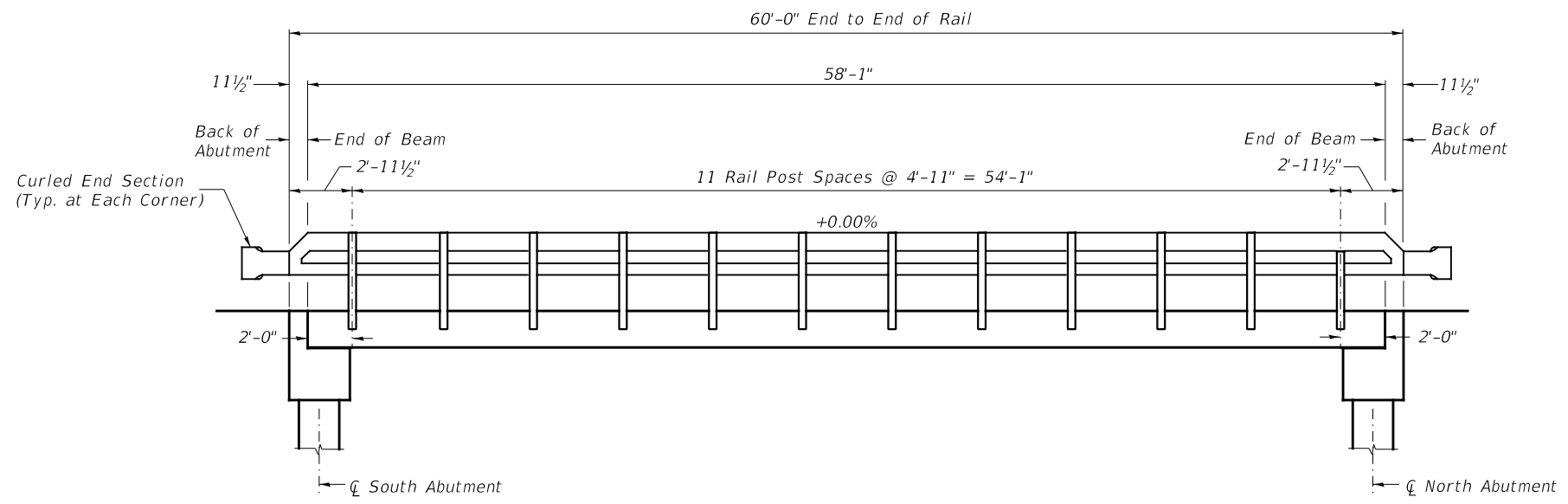
USER NAME = JSavage	DESIGNED - YP	REVISED - _____
	DRAWN - YP	REVISED - _____
PLOT SCALE = 100,0000' / in.	CHECKED - JPS/BAN	REVISED - _____
PLOT DATE = 2/10/2023	DATE - 11/29/2022	REVISED - _____

**IROQUOIS COUNTY
COUNTY HIGHWAY 42 (1100E ROAD)
OVER BRANCH OF PRAIRIE CREEK**

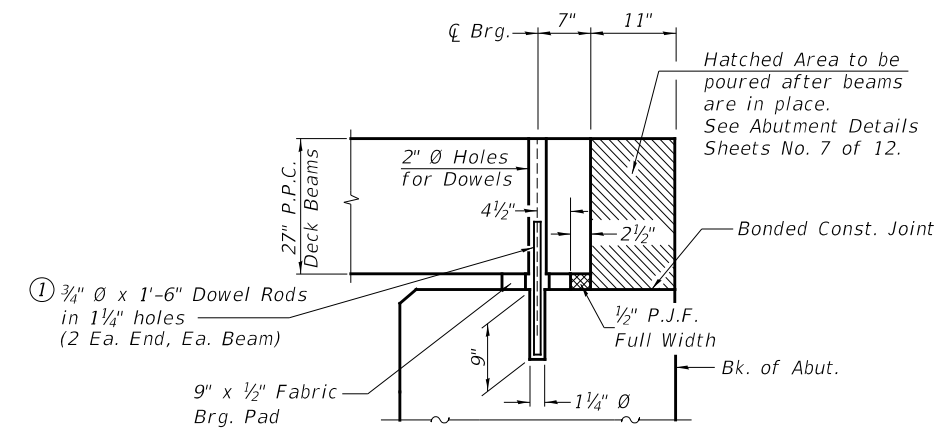
STEEL RAIL, TYPE SM (SPECIAL)

SCALE: NONE SHEET 5 OF 12 SHEETS

ROUTE	SECTION	COUNTY	TOTAL SHEETS	SHEET NO.
CH 42	19-0078-00-BR	IROQUOIS	24	11
SN 038-3205		CONTRACT NO. 87793		
FED. ROAD DIST. NO. 7	ILLINOIS	FED. AID PROJECT NO. YM2X(032)		



RAIL POST SPACING



SECTION THRU ABUTMENTS
(Dimensions @ Rt. L's to Abut.)

① Dowel Rods to be grouted after beams are in place and allowed to cure (Min. 24 hr.) prior to grouting the shear keys.

MODEL FILE NAME:

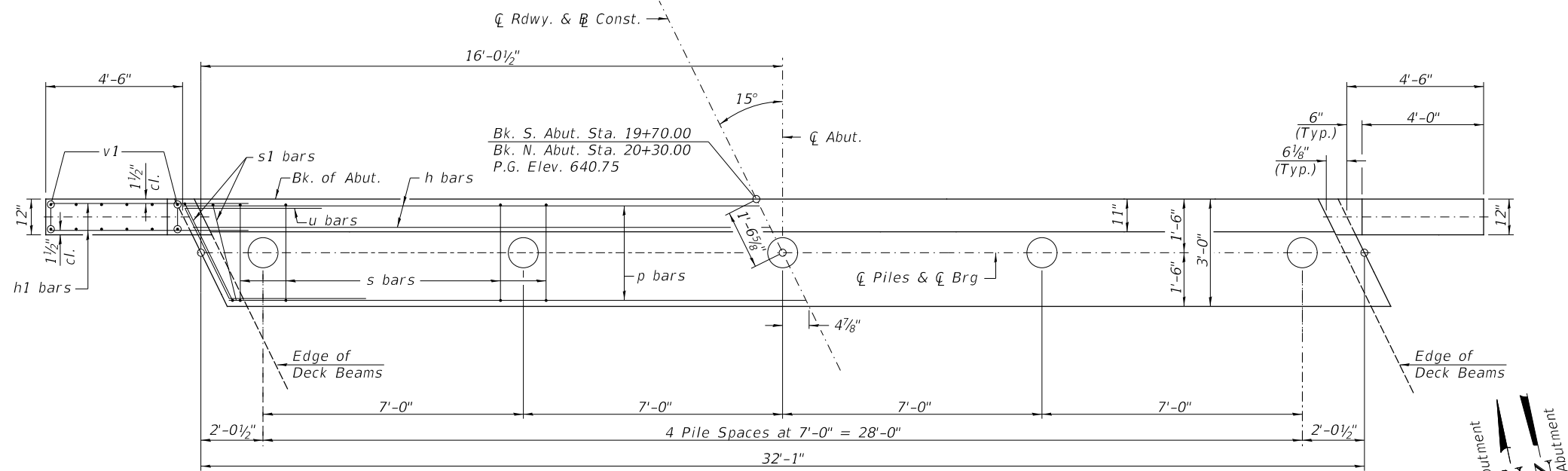
USER NAME = JSavage	DESIGNED - YP	REVISED - _____
	DRAWN - YP	REVISED - _____
PLOT SCALE = 100,0000' / in.	CHECKED - JPS/BAN	REVISED - _____
PLOT DATE = 2/14/2023	DATE - 11/29/2022	REVISED - _____

**IROQUOIS COUNTY
COUNTY HIGHWAY 42 (1100E ROAD)
OVER BRANCH OF PRAIRIE CREEK**

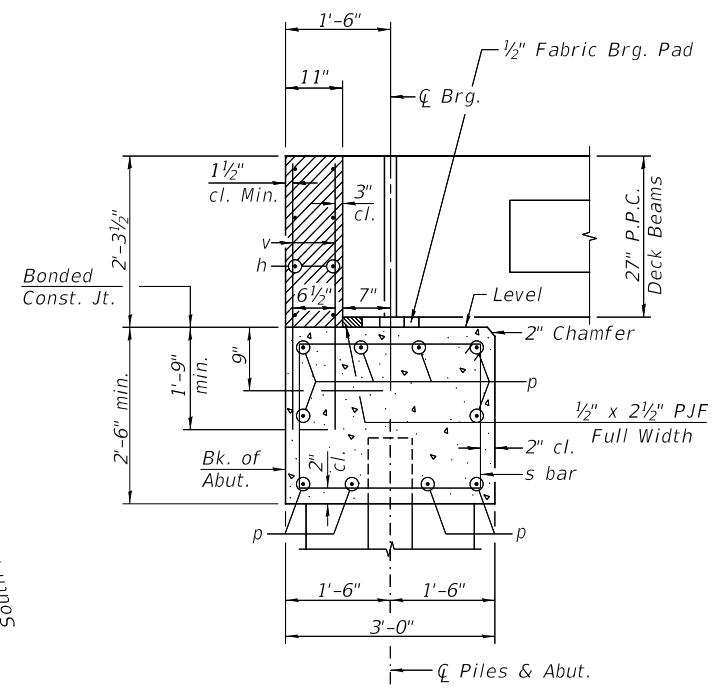
**RAIL POST SPACING AND
SUPERSTRUCTURE DETAILS**

SCALE: NONE SHEET 6 OF 12 SHEETS

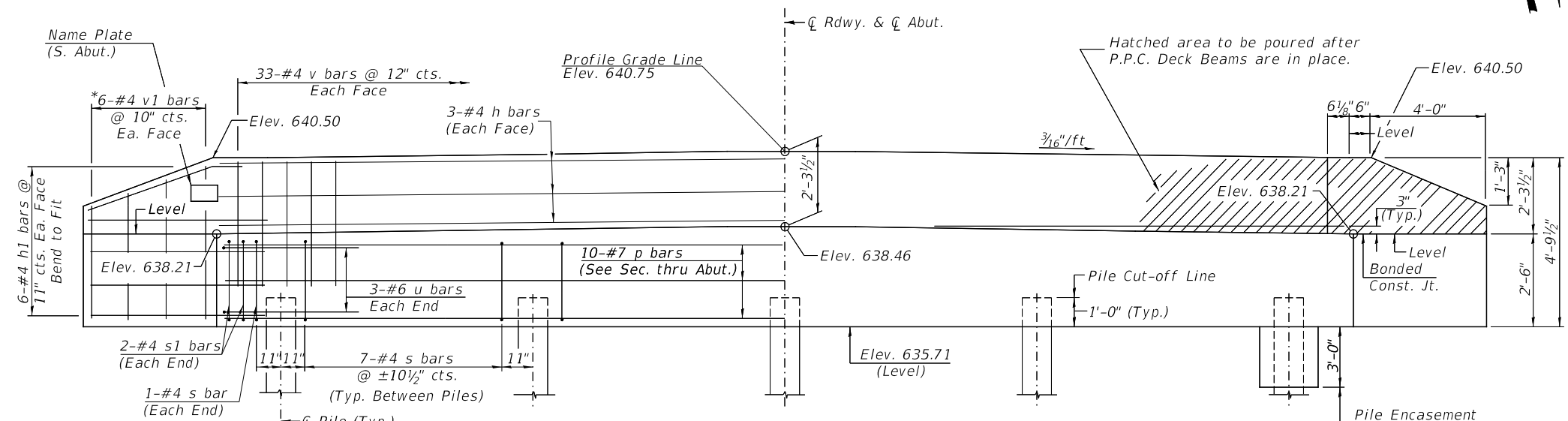
RT.	SECTION	COUNTY	TOTAL SHEETS	SHEET NO.
CH 42	19-0078-00-BR	IROQUOIS	24	12
	SN 038-3205		CONTRACT NO. 87793	
FED. ROAD DIST. NO. 7	ILLINOIS	FED. AID PROJECT NO. YM2X(032)		



PLAN



SECTION THRU ABUTMENTS
(Dimensions @ Rt. L's to Abut.)

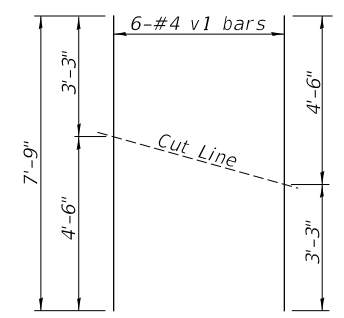


ELEVATION
(Front View of Abutment)

PILE DATA
 Type & Size: Metal Shell 12"x0.250" walls
 Nominal Required Bearing: 292 kips
 Factored Resistance Available: 160 kips
 Est. Length: 50' S. Abutment
 60' N. Abutment
 No. Req'd.: 10 (Includes 1 Test Pile at Each Abut.)

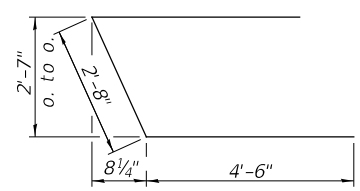
NOTES

- The backwall and the portion of the wingwalls above the bonded construction joint shall be cast against the in-place beam.
- All edges shall have standard 3/4" chamfer.

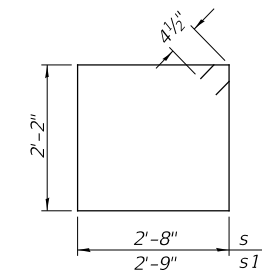


BAR CUTTING DIAGRAM

*Order v1 bars full length. Cut as shown and use remainder of bars in opposite face.



BAR u



BAR s & s1

**TWO ABUTMENTS
BILL OF MATERIAL**

BAR	NO.	SIZE	LENGTH	SHAPE
h	12	#4	31'-10"	—
h1	48	#4	6'-6"	—
p	20	#7	31'-10"	—
s	60	#4	10'-5"	□
s1	8	#4	10'-7"	□
u	12	#6	11'-8"	□
v	132	#4	4'-0"	—
v1	24	#4	7'-9"	—
Concrete Structures			CU YD	26.3
Reinforcement Bars			POUND	2,930
Structure Excavation			CU YD	55
Concrete Encasement			CU YD	2.6
Furnishing Metal Shell Piles 12"x0.250"			FOOT	440
Driving Piles			FOOT	440
Test Pile Metal Shells			EACH	2
Name Plates			EACH	1

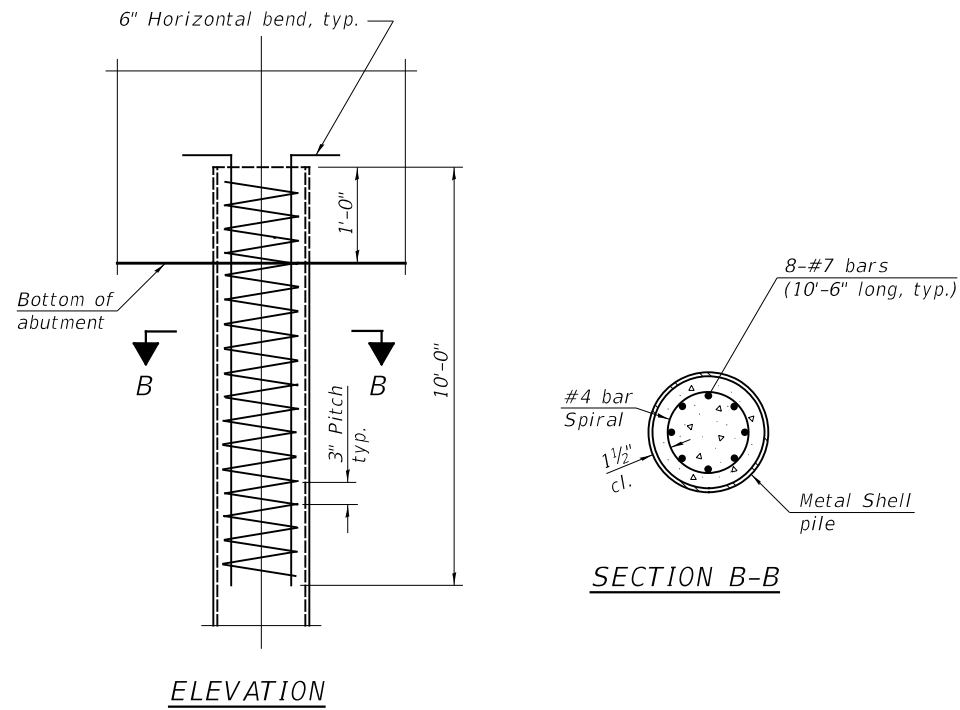
MODEL FILE NAME:

USER NAME = BNeibel	DESIGNED - YP	REVISED - _____
DRAWN - YP	REVISED - _____	
PLOT SCALE = 100.0000' / in.	CHECKED - JPS/BAN	REVISED - _____
PLOT DATE = 2/14/2023	DATE - 11/29/2022	REVISED - _____

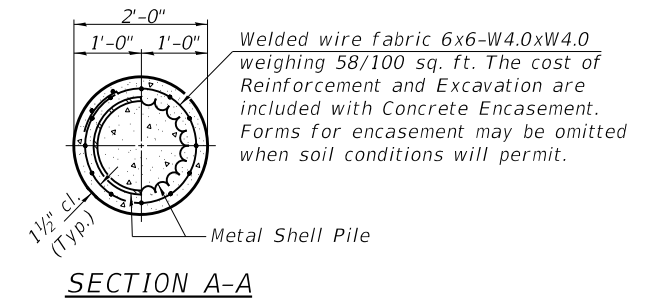
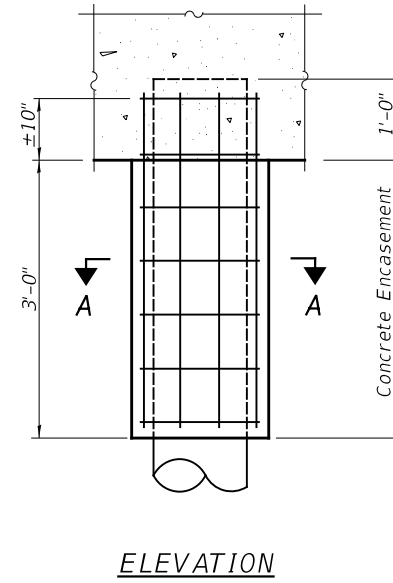
**IROQUOIS COUNTY
COUNTY HIGHWAY 42 (1100E ROAD)
OVER BRANCH OF PRAIRIE CREEK**

ABUTMENTS
 SCALE: NONE SHEET 7 OF 12 SHEETS

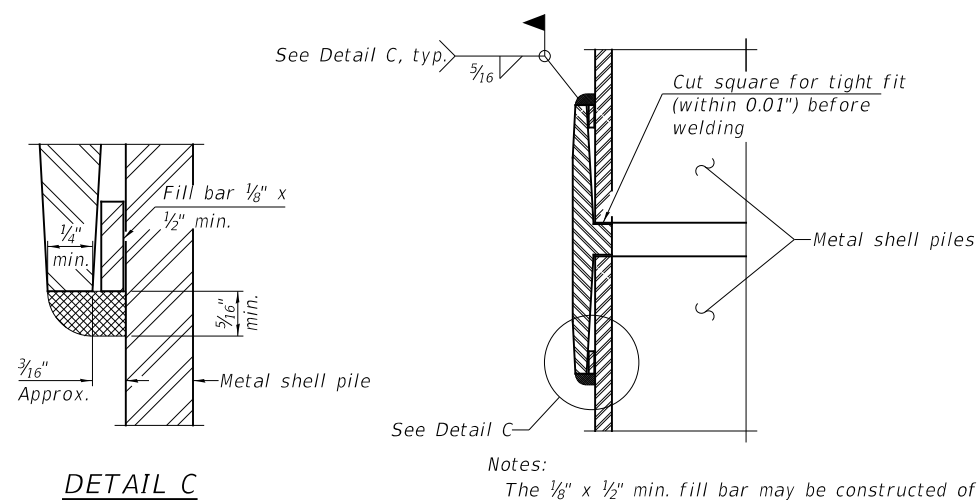
RTE.	SECTION	COUNTY	TOTAL SHEETS	SHEET NO.
CH 42	19-0078-00-BR	IROQUOIS	24	13
	SN 038-3205		CONTRACT NO. 87793	
FED. ROAD DIST. NO. 7	ILLINOIS	FED. AID PROJECT NO. YM2X(032)		



REINFORCEMENT AT ABUTMENTS

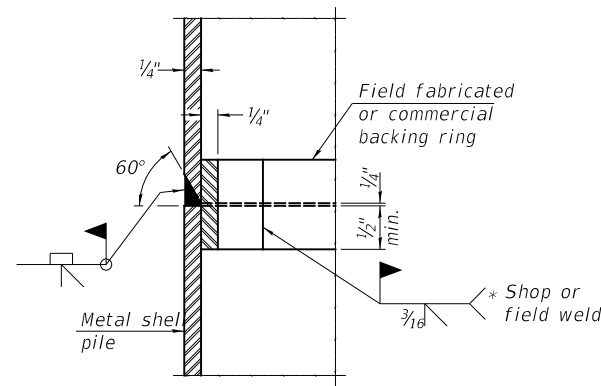


DETAIL OF METAL SHELL PILE ENCASEMENT AT ABUTMENTS



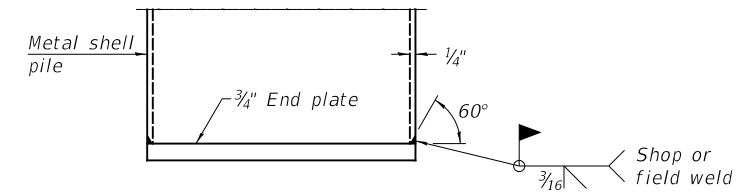
Notes:
 The 1/8" x 1/2" min. fill bar may be constructed of 2 bars with a 1/8" max. gap between them.
 Pile segments shall be driven to solid contact with splicer before welding.

WELDED COMMERCIAL SPLICE



COMPLETE PENETRATION WELD SPLICE

* Field fabricated backing ring may be made from pile shell by removing segment to allow reducing circumference and vertically rejoin with partial joint penetration weld.



END PLATE ATTACHMENT

Note:
 The metal shell piles shall be according to Article 1006.05 of the Standard Specifications.

MODEL FILE NAME:

4814-b008.dgn

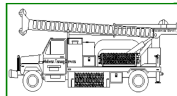
USER NAME = JSavage	DESIGNED - YP	REVISED - _____
DRAWN - YP	REVISED - _____	
PLOT SCALE = 100.0000' / in.	CHECKED - JPS/BAN	REVISED - _____
PLOT DATE = 2/13/2023	DATE - 11/29/2022	REVISED - _____

IROQUOIS COUNTY
 COUNTY HIGHWAY 42 (1100E ROAD)
 OVER BRANCH OF PRAIRIE CREEK

METAL SHELL PILE DETAILS

SCALE: NONE SHEET 8 OF 12 SHEETS

RT.	SECTION	COUNTY	TOTAL SHEETS	SHEET NO.
CH 42	19-0078-00-BR	IROQUOIS	24	14
SN 038-3205		CONTRACT NO. 87793		
FED. ROAD DIST. NO. 7 ILLINOIS		FED. AID PROJECT NO. YM2X(032)		



Midwest Testing Services, Inc.
3705 Progress Blvd.
Peru, IL 61354

BORING LOG

Sheet 1 of 4

Phone: 815-223-6696
Fax: 815-223-6659
e-mail: mts37@comcast.net

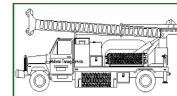
Client: Hutchison Engineering, Inc.
Project Name: Section 19-00078-02-BR
Project Site: CH 42 over Branch of Prairie Creek
Iroquois County, Illinois

Boring No. B-1
Surface Elev. 639.10
Auger Depth 71' Rotary Depth NA
Start Date 07/16/22 Finish Date 07/16/22

Location: Station 19+60 9' RT

(DEPTH) ELEV.	DESCRIPTION OF MATERIALS	Graphic Log	Depth in feet	SAMPLES						DRILLED BY	REMARKS
				Sample No.	Sample Type	Qu (TSF)	N Value (Blows)	Bulge / Shear	Moisture (%)	Dry Density (PCF)	
639.10										Randy Safranski Diedrich D-120	
638.10	Asphalt over Aggregate		1								
637.10	Stiff Brownish Gray Clay		2								
636.10		1	SS	1.6	8	B	22				
635.10	Very Stiff Gray Clay Till		3								
634.10		2	SS	1.6	9	B	22				
633.10			4								
632.10		3	SS	2.5	10	B	20				
631.10			5								
630.10		4	SS	2.4	10	B	21				
629.10			6								
628.10		5	SS	2.7	12	B	20				
627.10			7								
626.10		6	SS	3.3	18	B	19				
625.10			8								
624.10		7	SS	3.0	15	B	19				
623.10			8								
622.10		8	SS	3.1	14	B	20				

Groundwater Data: No groundwater encountered at time of subsurface investigation.
Comments:



Midwest Testing Services, Inc.
3705 Progress Blvd.
Peru, IL 61354

BORING LOG

Sheet 2 of 4

Phone: 815-223-6696
Fax: 815-223-6659
e-mail: mts37@comcast.net

Client: Hutchison Engineering, Inc.
Project Name: Section 19-00078-02-BR
Project Site: CH 42 over Branch of Prairie Creek
Iroquois County, Illinois

Boring No. B-1
Surface Elev. 639.10
Auger Depth 71' Rotary Depth NA
Start Date 07/16/22 Finish Date 07/16/22

Location: Station 19+60 9' RT

(DEPTH) ELEV.	DESCRIPTION OF MATERIALS	Graphic Log	Depth in feet	SAMPLES						DRILLED BY	REMARKS
				Sample No.	Sample Type	Qu (TSF)	N Value (Blows)	Bulge / Shear	Moisture (%)	Dry Density (PCF)	
618.10										Randy Safranski CME-55 Diedrich D-120	
617.10	Very Stiff Gray Clay Till		9	SS	2.3	10	B	23			
616.10		10	SS	2.2	9	B	22				
615.10			11								
614.10		11	SS	1.9	8	B	22				
613.10	Stiff Gray Clay Till		12								
612.10		12	SS	1.9	8	B	22				
611.10			13								
610.10		13	SS	1.8	7	B	22				
609.10			14								
608.10		14	SS	1.9	8	B	22				

Groundwater Data: No groundwater encountered at time of subsurface investigation.
Comments:

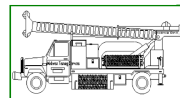
USER NAME = JSavage	DESIGNED - YP	REVISED - _____
DRAWN - YP	CHECKED - JPS/BAN	REVISED - _____
PLOT SCALE = 100,0000' / in.	DATE - 11/29/2022	REVISED - _____
PLOT DATE = 2/10/2023		

**IROQUOIS COUNTY
COUNTY HIGHWAY 42 (1100E ROAD)
OVER BRANCH OF PRAIRIE CREEK**

SOIL BORINGS

SCALE: NONE SHEET 9 OF 12 SHEETS

RT.	SECTION	COUNTY	TOTAL SHEETS	SHEET NO.
CH 42	19-0078-00-BR	IROQUOIS	24	15
SN 038-3205		CONTRACT NO. 87793		
FED. ROAD DIST. NO. 7 ILLINOIS		FED. AID PROJECT NO. YM2X(032)		



Midwest Testing Services, Inc.
3705 Progress Blvd.
Peru, IL 61354

BORING LOG

Sheet 3 of 4

Phone: 815-223-6696
Fax: 815-223-6659
e-mail: mts37@comcast.net

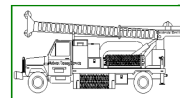
Client: Hutchison Engineering, Inc.
Project Name Section 19-00078-02-BR
Project Site: CH 42 over Branch of Prairie Creek
Iroquois County, Illinois

Boring No. B-1
Surface Elev. 639.10
Auger Depth 71' Rotary Depth NA
Start Date 07/16/22 Finish Date 07/16/22

Location: Station 19+60 9' RT

(DEPTH) ELEV.	DESCRIPTION OF MATERIALS	Graphic Log	Depth in feet	SAMPLES						Dry Density (PCF)	DRILLED BY Randy Safranski Diedrich D-120
				Sample No.	Sample Type	Qu (TSF)	N Value (Blows)	Bulge / Shear	Moisture (%)		
597.10											
596.10			43								
595.10			44								
594.10			45	15	SS	1.9	8	B	22		
593.10			46								
592.10			47								
591.10			48								
590.10			49								
589.10			50								
588.10	Stiff Gray Clay Till		51	16	SS	1.8	8	B	23		
587.10			52								
586.10			53								
585.10			54								
584.10			55	17	SS	1.8	8	B	22		
583.10			56								
582.10			57								
581.10			58								
580.10			59								
579.10			60								
578.10			61	18	SS	1.9	9	B	21		
577.10			62								

Groundwater Data: No groundwater encountered at time of subsurface investigation.
Comments:



Midwest Testing Services, Inc.
3705 Progress Blvd.
Peru, IL 61354

BORING LOG

Sheet 4 of 4

Phone: 815-223-6696
Fax: 815-223-6659
e-mail: mts37@comcast.net

Client: Hutchison Engineering, Inc.
Project Name Section 19-00078-02-BR
Project Site: CH 42 over Branch of Prairie Creek
Iroquois County, Illinois

Boring No. B-1
Surface Elev. 639.10
Auger Depth 71' Rotary Depth NA
Start Date 07/16/22 Finish Date 07/16/22

Location: Station 19+60 9' RT

(DEPTH) ELEV.	DESCRIPTION OF MATERIALS	Graphic Log	Depth in feet	SAMPLES						Dry Density (PCF)	DRILLED BY Randy Safranski Diedrich D-120
				Sample No.	Sample Type	Qu (TSF)	N Value (Blows)	Bulge / Shear	Moisture (%)		
576.10											
575.10			64								
574.10			65	19	SS	1.9	8	B	22		
573.10	Stiff Gray Clay Till		66								
572.10			67								
571.10			68								
570.10			69								
569.10			70								
568.10			71	20	SS	1.9	9	B	22		
567.10	Boring Terminated		72								
566.10			73								
565.10			74								
564.10			75								
563.10			76								
562.10			77								
561.10			78								
560.10			79								
559.10			80								
558.10			81								
557.10			82								
556.10			83								

Groundwater Data: No groundwater encountered at time of subsurface investigation.
Comments:

USER NAME = JSavage	DESIGNED - YP	REVISED - _____
DRAWN - YP	CHECKED - JPS/BAN	REVISED - _____
PLOT SCALE = 100,0000' / in.	DATE - 11/29/2022	REVISED - _____
PLOT DATE = 2/10/2023		

**IROQUOIS COUNTY
COUNTY HIGHWAY 42 (1100E ROAD)
OVER BRANCH OF PRAIRIE CREEK**

SOIL BORINGS

SCALE: NONE SHEET 10 OF 12 SHEETS

RT.	SECTION	COUNTY	TOTAL SHEETS	SHEET NO.
CH 42	19-0078-00-BR	IROQUOIS	24	16
SN 038-3205		CONTRACT NO. 87793		
FED. ROAD DIST. NO. 7 ILLINOIS		FED. AID PROJECT NO. YM2X(032)		



Midwest Testing Services, Inc.
3705 Progress Blvd.
Peru, IL 61354

BORING LOG

Sheet 1 of 4

Phone: 815-223-6696
Fax: 815-223-6659
e-mail: mts37@comcast.net

Client: Hutchison Engineering, Inc.
Project Name: Section 19-00078-02-BR
Project Site: CH 42 over Branch of Prairie Creek
Iroquois County, Illinois

Boring No. B-2
Surface Elev. 639.20
Auger Depth 71' Rotary Depth NA
Start Date 07/16/22 Finish Date 07/16/22

Location: Station 20+40 7' LT

(DEPTH) ELEV.	DESCRIPTION OF MATERIALS	Graphic Log	Depth in feet	SAMPLES						Dry Density (PCF)	DRILLED BY Randy Safranski Diedrich D-120
				Sample No.	Sample Type	Qu (TSF)	N Value (Blows)	Bulge / Shear	Moisture (%)		
639.20											
638.20	Asphalt over Aggregate		1								
637.20			2								
636.20			3	1	SS	1.6	7	B	21		
635.20			4								
634.20	Stiff Brownish Gray Clay		5	2	SS	1.8	8	B	19		
633.20			6								
632.20			7								
631.20			8	3	SS	1.4	6	B	22		
630.20			9								
629.20			10								
628.20			11	4	SS	1.5	8	B	20		
627.20			12								
626.20	Very Stiff Gray Clay Till		13	5	SS	2.4	12	B	20		
625.20			14								
624.20			15								
623.20			16	6	SS	2.5	13	B	19		
622.20			17								
621.20	Stiff Gray Clay Till		18	7	SS	1.9	10	B	22		
620.20			19								
619.20			20	8	SS	1.6	6	B	24		

Groundwater Data: No groundwater encountered at time of subsurface investigation
Comments:



Midwest Testing Services, Inc.
3705 Progress Blvd.
Peru, IL 61354

BORING LOG

Sheet 2 of 4

Phone: 815-223-6696
Fax: 815-223-6659
e-mail: mts37@comcast.net

Client: Hutchison Engineering, Inc.
Project Name: Section 19-00078-02-BR
Project Site: CH 42 over Branch of Prairie Creek
Iroquois County, Illinois

Boring No. B-2
Surface Elev. 639.20
Auger Depth 71' Rotary Depth NA
Start Date 07/16/22 Finish Date 07/16/22

Location: Station 20+40 7' LT

(DEPTH) ELEV.	DESCRIPTION OF MATERIALS	Graphic Log	Depth in feet	SAMPLES						Dry Density (PCF)	DRILLED BY Randy Safranski Diedrich D-120
				Sample No.	Sample Type	Qu (TSF)	N Value (Blows)	Bulge / Shear	Moisture (%)		
618.20											
617.20			22								
616.20			23	9	SS	1.8	8	B	22		
615.20			24								
614.20			25								
613.20			26	10	SS	1.7	8	B	22		
612.20			27								
611.20			28	11	SS	1.9	9	B	21		
610.20	Stiff Gray Clay Till		29								
609.20			30								
608.20			31	12	SS	1.6	7	B	23		
607.20			32								
606.20			33								
605.20			34								
604.20			35								
603.20			36	13	SS	1.5	6	B	23		
602.20			37								
601.20			38								
600.20			39								
599.20			40								
598.20			41	14	SS	1.4	6	B	24		

Groundwater Data: No groundwater encountered at time of subsurface investigation
Comments:

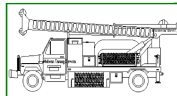
USER NAME = JSavage	DESIGNED - YP	REVISED - _____
DRAWN - YP	REVISIONS - _____	
PLOT SCALE = 100.0000' / in.	CHECKED - JPS/BAN	REVISIONS - _____
PLOT DATE = 2/10/2023	DATE - 11/29/2022	REVISIONS - _____

**IROQUOIS COUNTY
COUNTY HIGHWAY 42 (1100E ROAD)
OVER BRANCH OF PRAIRIE CREEK**

SOIL BORINGS

SCALE: NONE SHEET 11 OF 12 SHEETS

ROUTE	SECTION	COUNTY	TOTAL SHEETS	SHEET NO.
CH 42	19-0078-00-BR	IROQUOIS	24	17
SN 038-3205		CONTRACT NO. 87793		
FED. ROAD DIST. NO. 7 ILLINOIS		FED. AID PROJECT NO. YM2X(032)		



Midwest Testing Services, Inc.
3705 Progress Blvd.
Peru, IL 61354

BORING LOG

Sheet 3 of 4

Phone: 815-223-6696
Fax: 815-223-6659
e-mail: mts37@comcast.net

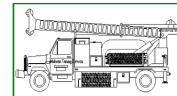
Client: Hutchison Engineering, Inc.
Project Name: Section 19-00078-02-BR
Project Site: CH 42 over Branch of Prairie Creek
Iroquois County, Illinois

Boring No. B-2
Surface Elev. 639.20
Auger Depth 71' Rotary Depth NA
Start Date 07/16/22 Finish Date 07/16/22

Location: Station 20+40 7' LT

(DEPTH) ELEV.	DESCRIPTION OF MATERIALS	Graphic Log	Depth in feet	SAMPLES						DRILLED BY	REMARKS
				Sample No.	Sample Type	Qu (TSF)	N Value (Blows)	Bulge / Shear	Moisture (%)	Dry Density (PCF)	
597.20										Randy Safranski CME-55 Diedrich D-120	
596.20			43								
595.20			44								
594.20			45								
593.20			46	15	SS	1.6	7	B	24		
592.20			47								
591.20			48								
590.20			49								
589.20	Stiff Gray Clay Till		50								
588.20			51	16	SS	1.5	7	B	24		
587.20			52								
586.20			53								
585.20			54								
584.20			55								
583.20			56	17	SS	1.4	6	B	25		
582.20			57								
581.20			58								
580.20			59								
579.20			60								
578.20			61	18	SS	1.6	7	B	22		
577.20			62								

Groundwater Data: No groundwater encountered at time of subsurface investigation
Comments:



Midwest Testing Services, Inc.
3705 Progress Blvd.
Peru, IL 61354

BORING LOG

Sheet 4 of 4

Phone: 815-223-6696
Fax: 815-223-6659
e-mail: mts37@comcast.net

Client: Hutchison Engineering, Inc.
Project Name: Section 19-00078-02-BR
Project Site: CH 42 over Branch of Prairie Creek
Iroquois County, Illinois

Boring No. B-2
Surface Elev. 639.20
Auger Depth 71' Rotary Depth NA
Start Date 07/16/22 Finish Date 07/16/22

Location: Station 20+40 7' LT

(DEPTH) ELEV.	DESCRIPTION OF MATERIALS	Graphic Log	Depth in feet	SAMPLES						DRILLED BY	REMARKS
				Sample No.	Sample Type	Qu (TSF)	N Value (Blows)	Bulge / Shear	Moisture (%)	Dry Density (PCF)	
576.20										Randy Safranski Diedrich D-120	
575.20			64								
574.20			65								
573.20			66	19	SS	1.9	8	B	21		
572.20	Stiff Gray Clay Till		67								
571.20			68								
570.20			69								
569.20			70								
568.20			71	20	SS	1.6	7	B	22		
567.20			72								
566.20			73								
565.20			74								
564.20			75								
563.20			76								
562.20			77								
561.20			78								
560.20			79								
559.20			80								
558.20			81								
557.20			82								
556.20			83								

Groundwater Data: No groundwater encountered at time of subsurface investigation
Comments:

USER NAME = JSavage	DESIGNED - YP	REVISED - _____
DRAWN - YP	REVISIONS - _____	
PLOT SCALE = 100.0000' / in.	CHECKED - JPS/BAN	REVISIONS - _____
PLOT DATE = 2/10/2023	DATE - 11/29/2022	REVISIONS - _____

**IROQUOIS COUNTY
COUNTY HIGHWAY 42 (1100E ROAD)
OVER BRANCH OF PRAIRIE CREEK**

SOIL BORINGS

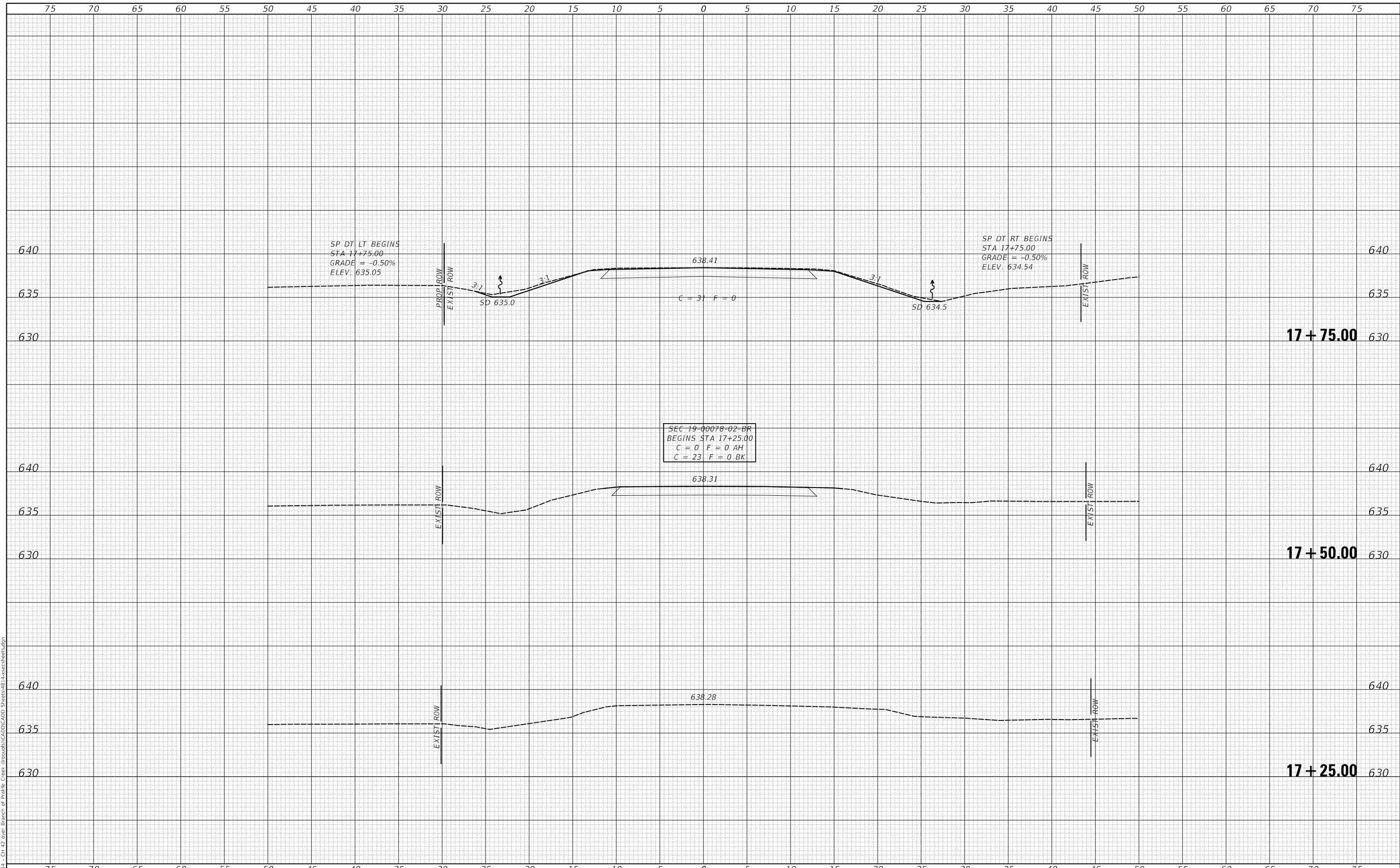
SCALE: NONE SHEET 12 OF 12 SHEETS

RT.	SECTION	COUNTY	TOTAL SHEETS	SHEET NO.
CH 42	19-0078-00-BR	IROQUOIS	24	18
	SN 038-3205		CONTRACT NO. 87793	
	FED. ROAD DIST. NO. 7	ILLINOIS	FED. AID PROJECT NO. YM2X(032)	

DATE	
BY	
FINAL SURVEY	SURVEYED
NOTE BOOK	PLOTTED
NO.	TEMPLATE
	AREAS CHECKED
	AREAS CHECKED

DATE	
BY	
ORIGINAL SURVEY	SURVEYED
NOTE BOOK	PLOTTED
NO.	TEMPLATE
	AREAS CHECKED
	AREAS CHECKED

MODEL: SPODELNAME.S
FILE NAME: V:\0311 - CH 42 over Branch of Prairie Creek I\0311\0311-CH42-CROSS SECTIONS.dgn



USER NAME = JSavage	DESIGNED - YP	REVISED - _____
	DRAWN - YP	REVISED - _____
PLOT SCALE = 10.0000' / in.	CHECKED - JPS/BAN	REVISED - _____
PLOT DATE = 2/10/2023	DATE - _____	REVISED - _____

**IROQUOIS COUNTY
COUNTY HIGHWAY 42 (1100E ROAD)
OVER BRANCH OF PRAIRIE CREEK**

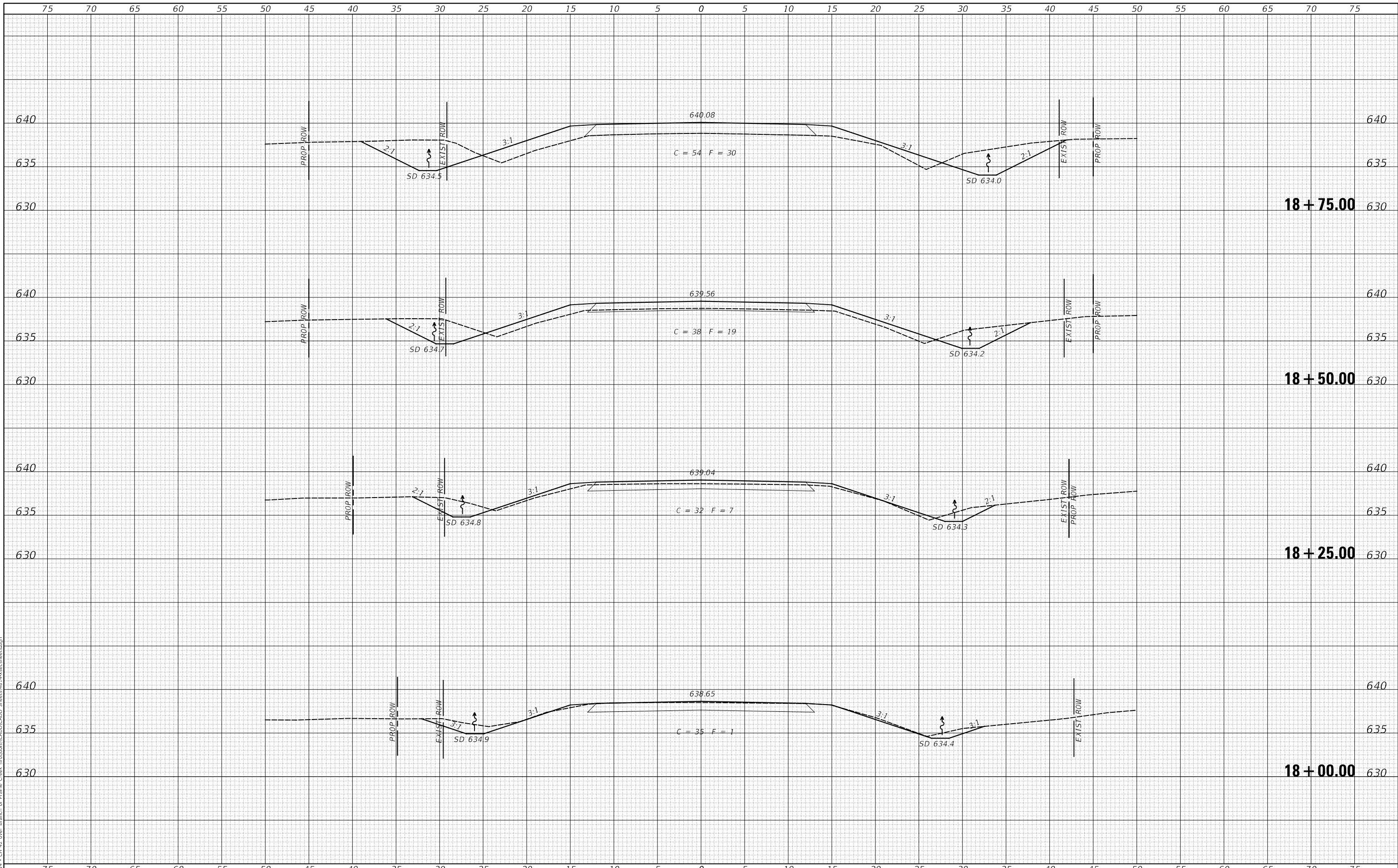
CROSS SECTIONS			
SCALE: 1"=5"	SHEET 1	OF 6 SHEETS	STA. 17+25.00 TO STA. 17+75.00

RTE.	SECTION	COUNTY	TOTAL SHEETS	SHEET NO.
CH 42	19-00078-02-BR	IROQUOIS	24	19
FED. ROAD DIST. NO.7		ILLINOIS	FED. AID PROJECT NO. YM2X1032)	
		CONTRACT NO. 87793		

DATE	
BY	
FINAL SURVEY	SURVEYED
NOTE BOOK	PLOTTED
NO.	TEMPLATE
	AREAS CHECKED
	AREAS CHECKED

DATE	
BY	
ORIGINAL SURVEY	SURVEYED
NOTE BOOK	PLOTTED
NO.	TEMPLATE
	AREAS CHECKED
	AREAS CHECKED

MODEL: SPODELNAME\$
FILE NAME: V:\0311 - CH 42 over Branch of Prairie Creek I\iroquois\CA01CADD\Sheet48-1-a-cs-sheet.dgn



USER NAME = JSavage	DESIGNED - YP	REVISED - _____
	DRAWN - YP	REVISED - _____
PLOT SCALE = 10.0000' / in.	CHECKED - JPS/BAN	REVISED - _____
PLOT DATE = 2/10/2023	DATE - _____	REVISED - _____

**IROQUOIS COUNTY
COUNTY HIGHWAY 42 (1100E ROAD)
OVER BRANCH OF PRAIRIE CREEK**

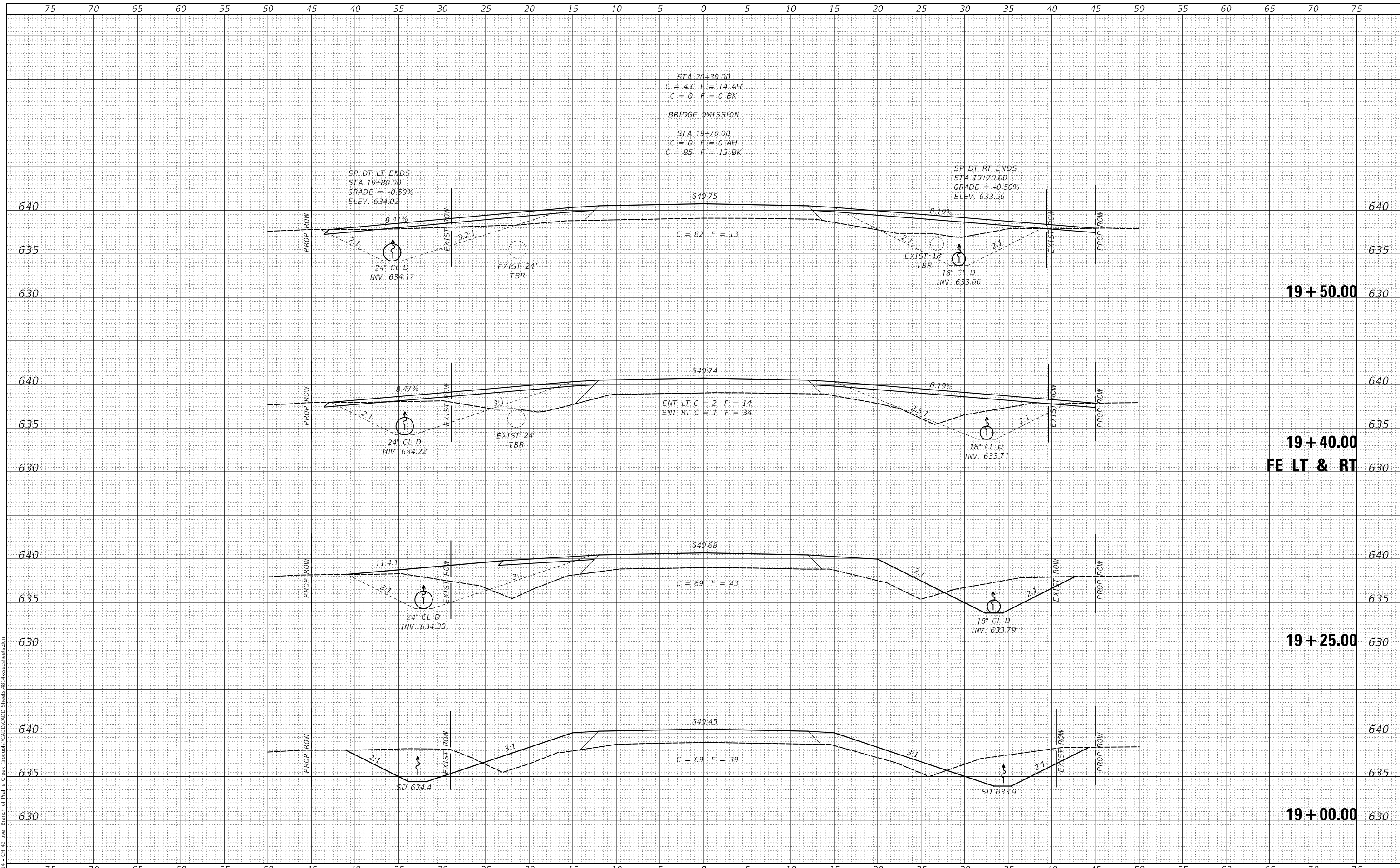
SCALE: 1"=5"	SHEET 2	OF 6 SHEETS	STA. 18+00.00	TO STA. 18+75.00
--------------	---------	-------------	---------------	------------------

ROUTE	SECTION	COUNTY	TOTAL SHEETS	SHEET NO.
CH 42	19-00078-02-BR	IROQUOIS	24	20
FED. ROAD DIST. NO.7 ILLINOIS			CONTRACT NO. 87793	
FED. AID PROJECT NO. YM2X1032)				

DATE	
BY	
FINAL SURVEY	SURVEYED
NOTE BOOK	PLOTTED
NO.	TEMPLATE
	AREAS CHECKED
	AREAS CHECKED

DATE	
BY	
ORIGINAL SURVEY	SURVEYED
NOTE BOOK	PLOTTED
NO.	TEMPLATE
	AREAS CHECKED
	AREAS CHECKED

MODEL: SPODELNAME\$
FILE NAME: W19011 - CH 42 over Branch of Prairie Creek Itroughs(CADD)CADD Sheets48-1-xxcsheets.dgn



USER NAME = JSavage	DESIGNED - YP	REVISED - _____
	DRAWN - YP	REVISED - _____
PLOT SCALE = 10.0000' / in.	CHECKED - JPS/BAN	REVISED - _____
PLOT DATE = 2/10/2023	DATE - _____	REVISED - _____

**IROQUOIS COUNTY
COUNTY HIGHWAY 42 (1100E ROAD)
OVER BRANCH OF PRAIRIE CREEK**

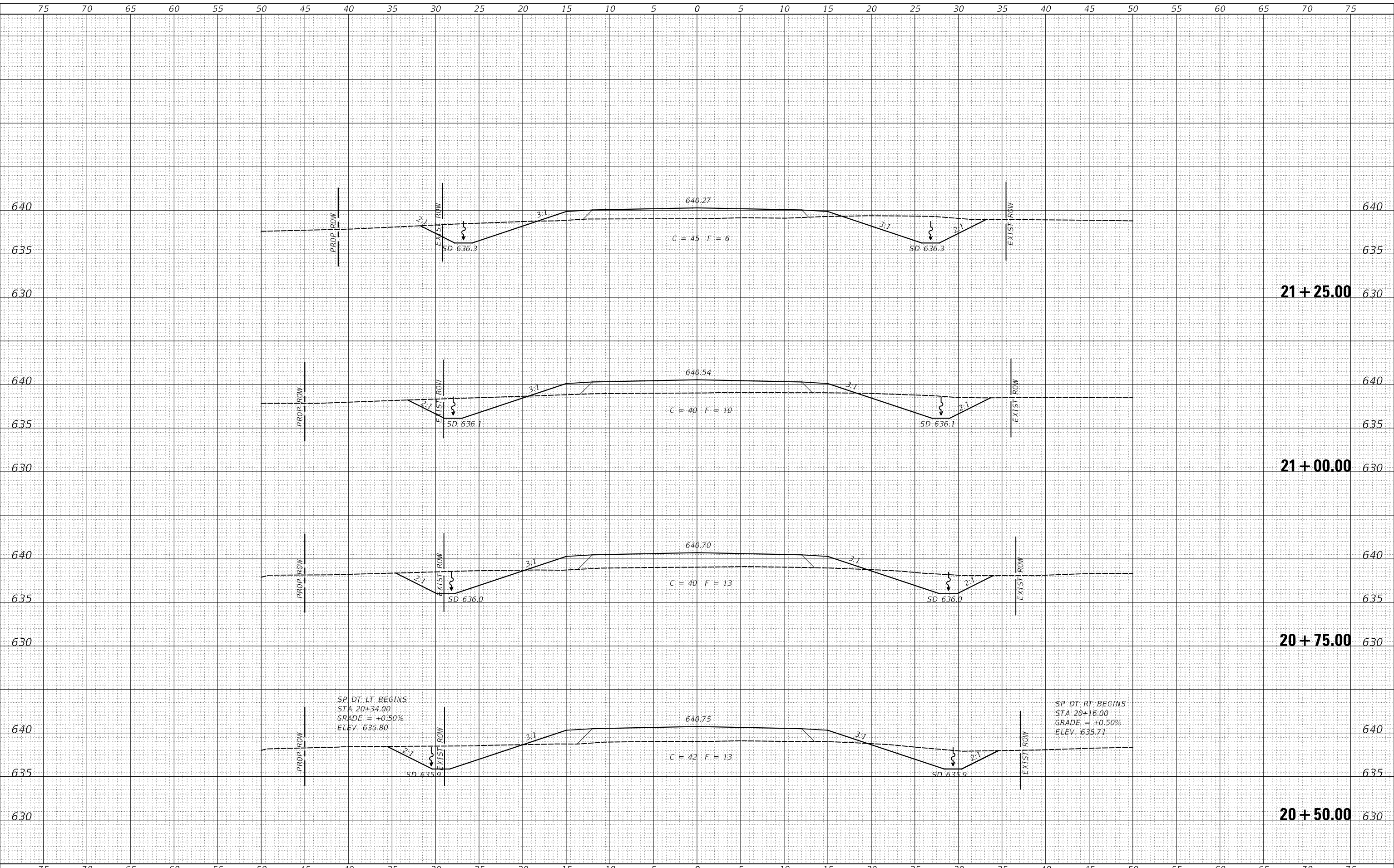
SCALE: 1"=5" SHEET 3 OF 6 SHEETS STA. 19+00.00 TO STA. 19+50.00

RT.	SECTION	COUNTY	TOTAL SHEETS	SHEET NO.
CH 42	19-00078-02-BR	IROQUOIS	24	21
CONTRACT NO. 87793				
FED. ROAD DIST. NO.7	ILLINOIS	FED. AID PROJECT NO. YM21032)		

DATE	
BY	
FINAL SURVEY	SURVEYED
NOTE BOOK	PLOTTED
NO.	TEMPLATE
	AREAS CHECKED
	AREAS CHECKED

DATE	
BY	
ORIGINAL SURVEY	SURVEYED
NOTE BOOK	PLOTTED
NO.	TEMPLATE
	AREAS CHECKED
	AREAS CHECKED

MODEL: SPODELNAME\$
 FILE NAME: W:\0311 - CH 42 over Branch of Prairie Creek Iroquois\CA01CADD Sheets\48-1-xx-sheet.dgn



USER NAME = JSavage	DESIGNED - YP	REVISED - _____
PLOT SCALE = 10.0000' / in.	DRAWN - YP	REVISED - _____
PLOT DATE = 2/10/2023	CHECKED - JPS/BAN	REVISED - _____
	DATE - _____	REVISED - _____

**IROQUOIS COUNTY
 COUNTY HIGHWAY 42 (1100E ROAD)
 OVER BRANCH OF PRAIRIE CREEK**

CROSS SECTIONS

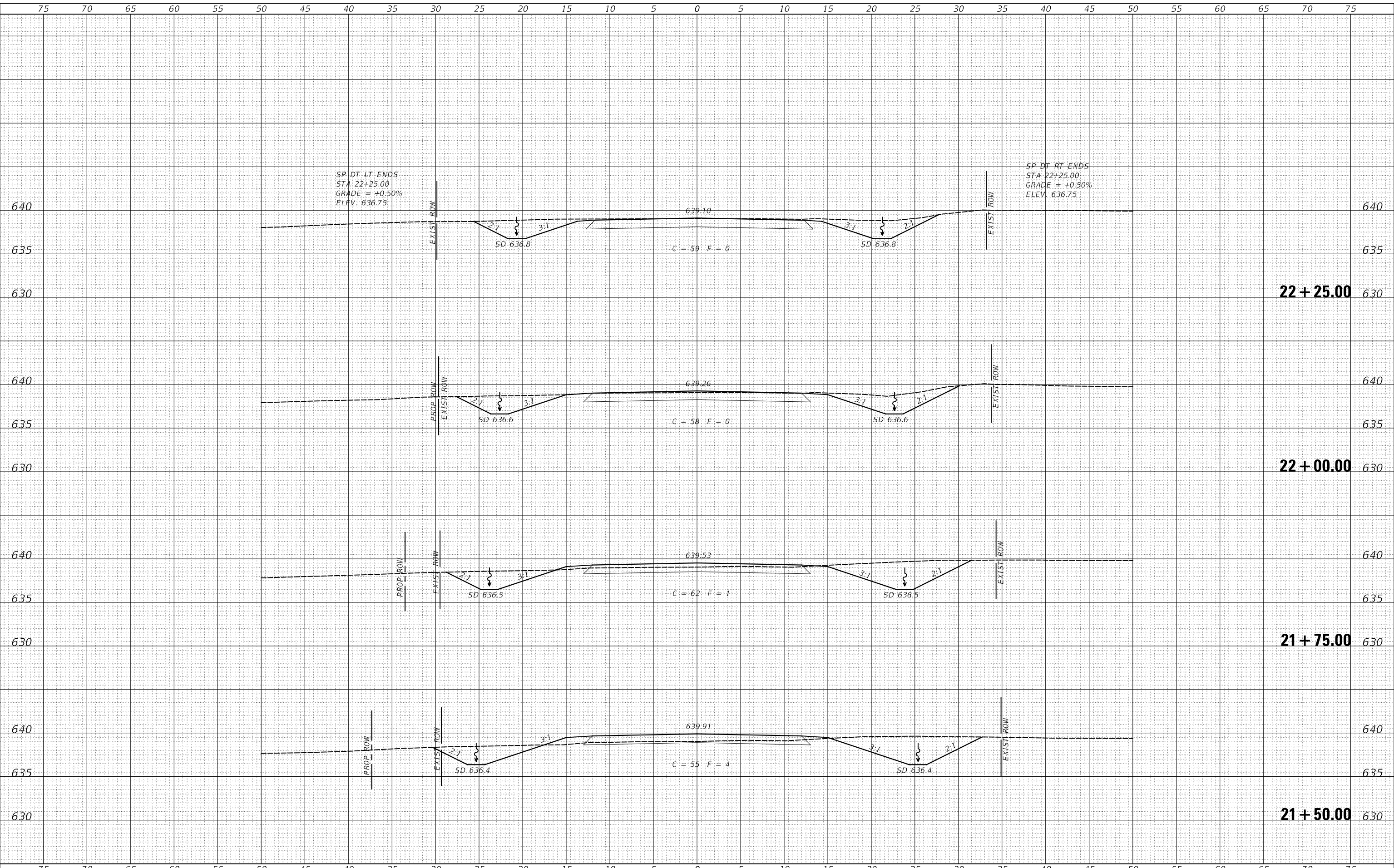
SCALE: 1"=5" SHEET 4 OF 6 SHEETS STA. 20+50.00 TO STA. 21+25.00

RT.	SECTION	COUNTY	TOTAL SHEETS	SHEET NO.
CH 42	19-00078-02-BR	IROQUOIS	24	22
FED. ROAD DIST. NO.7		ILLINOIS	CONTRACT NO. 87793	
			FED. AID PROJECT NO. YM2X1032)	

DATE	
BY	
FINAL SURVEY	SURVEYED
NOTE BOOK	PLOTTED
NO.	TEMPLATE
	AREAS CHECKED
	AREAS CHECKED

DATE	
BY	
ORIGINAL SURVEY	SURVEYED
NOTE BOOK	PLOTTED
NO.	TEMPLATE
	AREAS CHECKED
	AREAS CHECKED

MODEL: SPODELNAME5
FILE NAME: W:\0311 - CH 42 over Branch of Prairie Creek I:\iroquois\CADD\CADD Sheets\48-1-24\sheet5.dgn



SP DT LT ENDS
STA 22+25.00
GRADE = +0.50%
ELEV. 636.75

SP DT RT ENDS
STA 22+25.00
GRADE = +0.50%
ELEV. 636.75

**IROQUOIS COUNTY
COUNTY HIGHWAY 42 (1100E ROAD)
OVER BRANCH OF PRAIRIE CREEK**

CROSS SECTIONS

USER NAME = JSavage	DESIGNED - YP	REVISED - _____
	DRAWN - YP	REVISED - _____
PLOT SCALE = 10.0000' / in.	CHECKED - JPS/BAN	REVISED - _____
PLOT DATE = 2/10/2023	DATE - _____	REVISED - _____

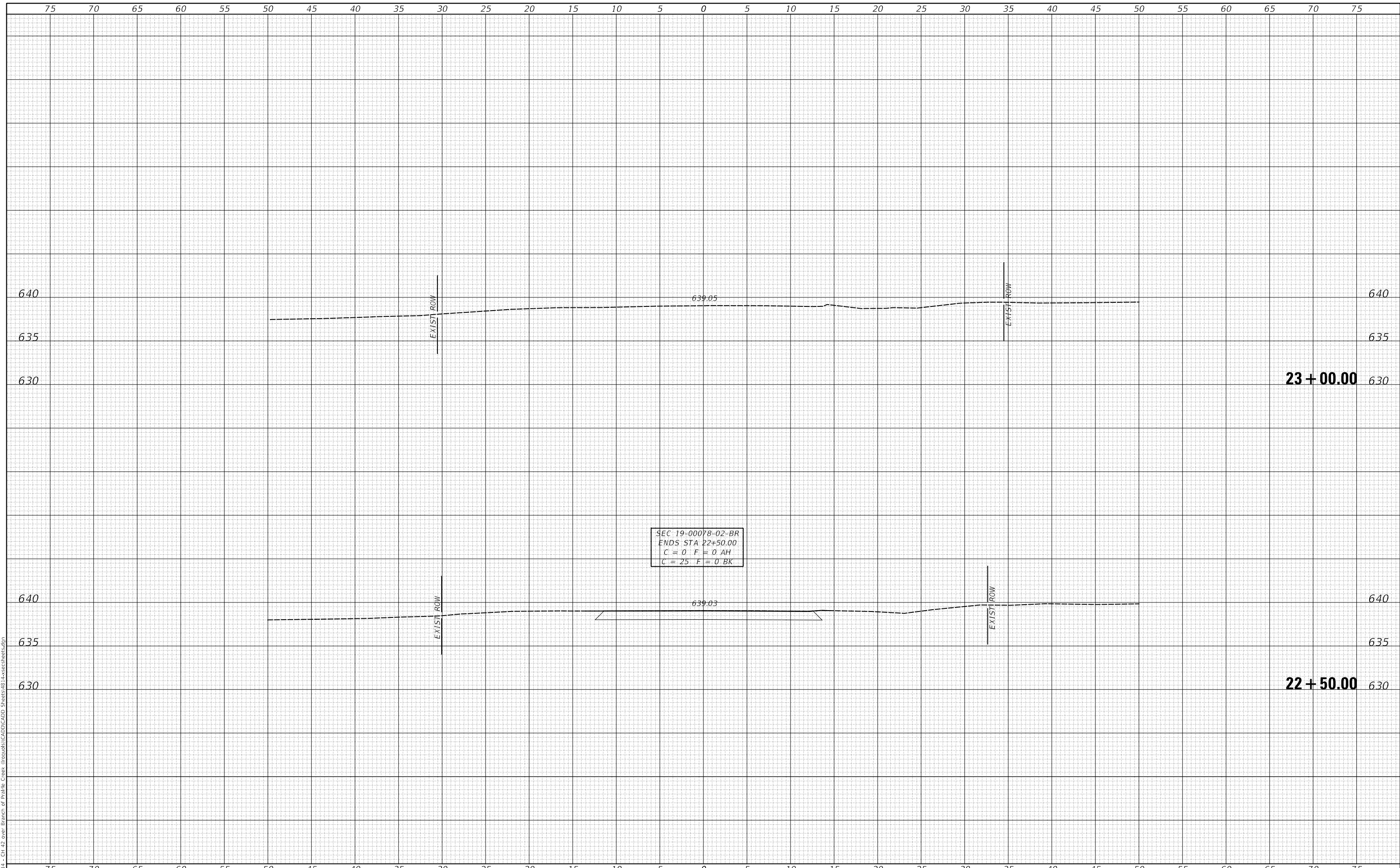
SCALE: 1"=5" SHEET 5 OF 6 SHEETS STA. 21+50.00 TO STA. 22+25.00

RT.	SECTION	COUNTY	TOTAL SHEETS	SHEET NO.
CH 42	19-00078-02-BR	IROQUOIS	24	23
		CONTRACT NO. 87793		
FED. ROAD DIST. NO.7		ILLINOIS	FED. AID PROJECT NO. YM2X1032)	

DATE	
BY	
FINAL SURVEY NO.	
SURVEYED PLOTTED AREAS CHECKED	
NOTE BOOK NO.	
TEMPLATE AREAS CHECKED	

DATE	
BY	
ORIGINAL SURVEY NO.	
SURVEYED PLOTTED AREAS CHECKED	
NOTE BOOK NO.	
TEMPLATE AREAS CHECKED	

MODEL: SPODELNAME5
FILE NAME: V:\0311 - CH 42 over Branch of Prairie Creek Iroquois\CADD\CADD Sheets\48-1-xx-sheet.dgn



USER NAME = JSavage	DESIGNED - YP	REVISED - _____
	DRAWN - YP	REVISED - _____
PLOT SCALE = 10.0000' / in.	CHECKED - JPS/BAN	REVISED - _____
PLOT DATE = 2/10/2023	DATE - _____	REVISED - _____

**IROQUOIS COUNTY
COUNTY HIGHWAY 42 (1100E ROAD)
OVER BRANCH OF PRAIRIE CREEK**

SCALE: 1"=5"	SHEET 6	OF 6 SHEETS	STA. 22+50.00	TO STA. 23+00.00
--------------	---------	-------------	---------------	------------------

CROSS SECTIONS

RT.	SECTION	COUNTY	TOTAL SHEETS	SHEET NO.
CH 42	19-00078-02-BR	IROQUOIS	24	24
FED. ROAD DIST. NO.7 ILLINOIS			CONTRACT NO. 87793	
FED. AID PROJECT NO. YM21032)				