



Illinois Department of Transportation

Office of Intermodal Project Implementation / Division of Aeronautics
1 Langhorne Bond Drive / Springfield, Illinois 62707-8415

April 18, 2023

SUBJECT: Tinley Park Helistop
Tinley Park, Illinois
Cook County
Illinois Project Number: TF8-5050
Contract No. TI001
Item No. 04A, April 28, 2023, Letting
Addendum A

NOTICE TO PROSPECTIVE BIDDERS

Attached is an addendum to the plans or proposal. This addendum involves revised and/or added material.

Reason for Addendum:

- 1) Revise in-pavement light fixture from L-852H to L-852T(L).
- 2) Clarify the callout and location for Concrete Encased 4-Way, 2" PVC Duct.

To All Plan Holders:

Changes have been made to four (4) Construction Plan Sheets, and one (1) Special Provision Page. Further, one (1) pay item description (AR801024) has been changed by IDOT in the Schedule of Prices in the Proposal.

Plan Changes:

Replace the following original drawings with the following drawing sheets in Addendum A:

- 1) Drawing C1.0 Sheet Index and Summary of Quantities
- 2) Drawing C13.0 Proposed Electrical Site Plan
- 3) Drawing C13.1 Proposed Electrical Notes
- 4) Drawing C13.2 Electrical Details

Special Provisions Changes:

Replace the following original special provision with the following page in Addendum A:
Page 79 – Item 801014 / 801024 In-Pavement Medium Intensity Light.

Schedule of Prices Changes:

Revise the pay item description AR801024 from "L825H In-Pavement Medium Intensity Light" to "In-Pavement Medium Intensity Light".

Prime contractors must utilize the enclosed material when preparing their bid and must include any changes to the Schedule of Prices in their bid.

Questions on this addendum may be directed Kris Salvatera, P.E., of Primera Engineers, Ltd., at 312.242.6362.



ADDENDUM A KS RH SM 4/18/23
 No. Description By Chk. App. Date

HELISTOP AIRCRAFT PAVEMENT IMPROVEMENTS

IDA No: TF8-5050

CONTRACT NO. T1001

100% FINAL - 03/29/2023

DRAWING TITLE
INDEX OF SHEETS, SUMMARY OF QUANTITIES, AND GENERAL NOTES

SHEET NO.
SHEET 2 OF 30
 APPROVED DRAWING NO.
 SM
 CHECKED
 SM
 DRAWN BY
 KWS
C1.0

ADDITIVE ALTERNATE 1 - FUEL

ITEM NO.	DESCRIPTION	UNITS	PLAN QUANTITY	RECORD QUANTITY
AS152410	UNCLASSIFIED EXCAVATION	CU YD	64	
AS156531	EROSION CONTROL BLANKET	SQ YD	35	
AS209612	CRUSHED AGG. BASE COURSE - 12"	SQ YD	39	
AS705506	6" PERFORATED UNDERDRAIN	FOOT	64	
AS751803	UNDERDRAIN CLEANOUT	EACH	2	
AS801033	PROTECTION BOLLARD	EACH	9	
AS801033	SELF-SERVICE FUELING SYSTEM CONCRETE PAD (REINFORCED)	SQ YD	39	
AS801034	INTERLOCKING CONCRETE BLOCK RETAINING WALL	FOOT	56	
AS901510	SEEDING	ACRE	0.01	

ADDITIVE ALTERNATE 2 - LIGHTING AND CAMERA SECURITY

ITEM NO.	DESCRIPTION	UNITS	PLAN QUANTITY	RECORD QUANTITY
AT108410	1/C #10 600 V UG CABLE	FOOT	600	
AT108762	1/C #12 GROUND	FOOT	300	
AT801015	REPLACE WALL MOUNTED LIGHT FIXTURE	EACH	8	
AT801028	FIXED SECURITY CAMERA SYSTEM ON EXISTING POLE	EACH	3	
AT801029	REPLACE AREA LIGHTING (COBRA HEAD) LIGHT FIXTURES	EACH	8	
AT801030	LOWER EXISTING POLE AND EXISTING SECURITY CAMERA	EACH	1	

ADDITIVE ALTERNATE 3 - FENCING

ITEM NO.	DESCRIPTION	UNITS	PLAN QUANTITY	RECORD QUANTITY
AU162905	REMOVE GATE	EACH	2	
AU801031	ORNAMENTAL 6' TALL BLACK METAL FENCE	FOOT	160	
AU801032	ORNAMENTAL 6' TALL BLACK METAL MANUAL SLIDING GATE - 30'	EACH	2	

SUMMARY OF QUANTITIES

BASE BID - HELISTOP DESIGN

ITEM NO.	DESCRIPTION	UNITS	PLAN QUANTITY	RECORD QUANTITY
AR107508	L-806 W C 8" INTERNALLY LIT	EACH	1	
AR107900	REMOVE WIND CONE	EACH	1	
AR108082	1/C #2 XLP--USE	FOOT	680	
AR108406	1/C #6 600 V UG CABLE	FOOT	1100	
AR108410	1/C #10 600 V UG CABLE	FOOT	600	
AR108758	1/C #8 GROUND	FOOT	550	
AR108762	1/C #12 GROUND	FOOT	300	
AR110202	2" PVC DUCT, DIRECT BURY	FOOT	470	
AR110204	4" PVC DUCT, DIRECT BURY	FOOT	220	
AR110504	4-WAY CONCRETE ENCASED DUCT	FOOT	80	
AR110610	ELECTRICAL HANDHOLE	EACH	5	
AR119510	AIRPORT OBSTRUCTION LIGHT	EACH	3	
AR150510	ENGINEER'S FIELD OFFICE	L SUM	1	
AR150520	MOBILIZATION	L SUM	1	
AR150530	TRAFFIC MAINTENANCE	L SUM	1	
AR152410	UNCLASSIFIED EXCAVATION	CU YD	1276	
AR152540	SOIL STABILIZATION FABRIC	SQ YD	1709	
AR154606	GRANULAR DRAINAGE SUBBASE - 6"	SY	2300	
AR156510	SILT FENCE	FOOT	1154	
AR156520	INLET PROTECTION	EACH	3	
AR156531	EROSION CONTROL BLANKET	SQ YD	2508	
AR208515	POROUS GRANULAR EMBANKMENT	CU YD	570	
AR209606	CRUSHED AGG. BASE COURSE - 6"	SQ YD	1710	
AR401613	BIT. SURF. CSE.-METHOD I, SUPERPAVE	TON	800	
AR401650	BITUMINOUS PAVEMENT MILLING	SY YD	2700	
AR401665	BITUMINOUS PAVEMENT SAWING	FOOT	1650	
AR401900	REMOVE BITUMINOUS PAVEMENT	SQ YD	2330	
AR403613	BIT. BASE CSE.-METHOD I, SUPERPAVE	TON	215	
AR501508	8" PCC PAVEMENT	SQ YD	1640	
AR501530	PCC TEST BATCH	EACH	1	
AR501604	4" PCC SIDEWALK	SQ FT	25	
AR510510	TIE DOWN	EACH	2	
AR602510	BITUMINOUS PRIME COAT	GAL	190	
AR603510	BITUMINOUS TACK COAT	GAL	780	
AR620520	PAVEMENT MARKING-WATERBORNE	SQ FT	4450	
AR620525	PAVEMENT MARKING-BLACK BORDER	SQ FT	1320	
AR620900	PAVEMENT MARKING REMOVAL	SQ FT	1110	
AR705506	6" PERFORATED UNDERDRAIN	FOOT	910	
AR751803	UNDERDRAIN CLEANOUT	EACH	7	
AR751986	RECONSTRUCT CATCH BASIN	EACH	2	
AR801014	IN-PAVEMENT LIGHT BASE (EMPTY)	EACH	2	
AR801020	3/4" GRSC DUCT	FOOT	210	
AR801021	1" GRSC DUCT	FOOT	105	
AR801022	2" PVC DUCT, DIRECT BURY - SCHED 80	FOOT	357	
AR801023	4-WAY, 2" PVC DUCT, DIRECT BURY - SCHED 40	FOOT	495	
AR801024	L-852H IN-PAVEMENT MEDIUM INTENSITY LIGHT	EACH	22	
AR801025	RADIO CONTROL (LIGHTING)	L SUM	1	
AR801026	POWER DISTRIBUTION PANEL AND CONTROL EQUIPMENT WITH RAC	L SUM	1	
AR801027	HELIPORT BEACON	EACH	1	
AR801035	CONCRETE WASHOUT	L SUM	1	
AR901510	SEEDING	ACRE	0.52	

INDEX OF SHEETS

SHEET NO.	DRAWING NO.	TITLE
1	C0.0	COVER SHEET
2	C1.0	SUMMARY OF QUANTITIES / INDEX TO SHEETS / GENERAL NOTES
3	C2.0	SITE PLAN AND PROJECT CONTROL
4	C3.0	SITE SAFETY AND SEQUENCE OF CONSTRUCTION PLAN
5	C3.1	CONSTRUCTION SAFETY NOTES AND DETAILS
6	C4.0	SOIL & EROSION CONTROL PLAN
7	C4.1	EROSION & SEDIMENT CONTROL NOTES
8	C4.2	SOIL & EROSION CONTROL DETAILS
9	C5.0	EXISTING CONDITIONS
10	C6.0	PROPOSED SITEWORK DEMOLITION
11	C7.0	TYPICAL PAVEMENT SECTIONS AND DETAILS
12	C8.0	PROPOSED GEOMETRY & LAYOUT PLAN
13	C8.1	PROPOSED STAKING PLAN - 1
14	C8.2	PROPOSED STAKING PLAN - 2
15	C9.0	PROPOSED GRADING PLAN
16	C10.0	PROPOSED JOINTING PLAN
17	C10.1	PAVEMENT AND JOINTING DETAILS
18	C11.0	PROPOSED DRAINAGE / EDGE DRAIN LAYOUT
19	C11.1	DRAINAGE DETAILS
20	C12.0	PROPOSED PAVEMENT MARKING LAYOUT AND DETAILS - 1
21	C12.1	PROPOSED PAVEMENT MARKING LAYOUT AND DETAILS - 2
22	C13.0	PROPOSED ELECTRICAL SITE PLAN
23	C13.1	PROPOSED ELECTRICAL NOTES
24	C13.2	ELECTRICAL DETAILS
25	C13.3	EXISTING ELECTRICAL SITE PHOTOS - 1
26	C13.4	EXISTING ELECTRICAL SITE PHOTOS - 2
27	C14.0	SELF-SERVICE FUELING SYSTEM CONCRETE PAD AND DETAILS
28	C15.0	FENCING AND GATE DETAILS - 1
29	C15.1	FENCING AND GATE DETAILS - 2
30	C15.2	FENCING AND GATE DETAILS - 3

811 Know what's below. Call before you dig.

J.U.L.I.E. JOINT UTILITY LOCATING INFORMATION FOR EXCAVATORS
 www.illinois1call.com

THE LOCATION, SIZE AND TYPE OF MATERIAL OF EXISTING UNDERGROUND UTILITIES INDICATED ON THE PLANS IS NOT REPRESENTED AS BEING ACCURATE, SUFFICIENT OR COMPLETE IT SHALL BE THE CONTRACTOR'S RESPONSIBILITY TO DETERMINE ACTUAL LOCATIONS OF ALL SUCH FACILITIES, INCLUDING SERVICE CONNECTIONS TO UNDERGROUND UTILITIES. PRIOR TO CONSTRUCTION, THE CONTRACTOR SHALL NOTIFY UTILITY COMPANIES OF HIS OPERATIONAL PLANS, OBTAIN FROM RESPECTIVE UTILITY COMPANIES DETAILED INFORMATION AND ASSISTANCE RELATIVE TO THE LOCATION OF THEIR FACILITIES AND THE WORKING SCHEDULE OF THE COMPANIES FOR REMOVAL OR ADJUSTMENT WHERE REQUIRED. IN THE EVENT AN UNEXPECTED UTILITY INTERFERENCE IS ENCOUNTERED DURING CONSTRUCTION, THE CONTRACTOR SHALL IMMEDIATELY NOTIFY THE UTILITY COMPANY OF JURISDICTION AND THE ONE-CALL NOTICE SYSTEM. THE ENGINEER SHALL ALSO BE IMMEDIATELY NOTIFIED. ANY SUCH UTILITY OR SERVICES SHALL BE RESTORED TO SERVICE AT ONCE AND PAID FOR BY THE CONTRACTOR AT NO ADDITIONAL COST TO THE CONTRACT.

CALL J.U.L.I.E. FOR UTILITY INFORMATION AT 811.

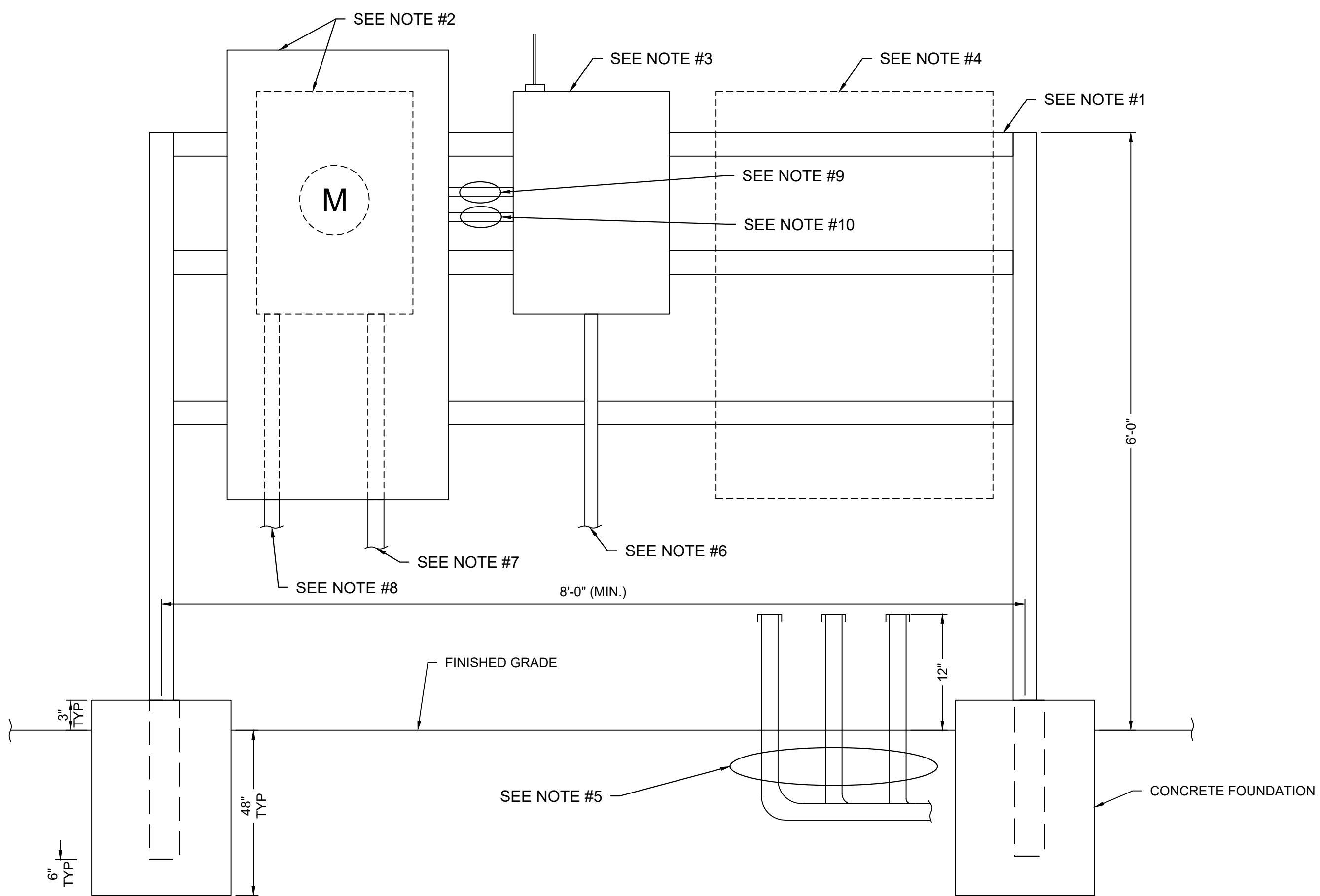
IDOT STANDARD DRAWINGS
 701901-07 TRAFFIC CONTROL DEVICES

IDOT D1 STANDARD DRAWINGS
 TC10 TRAFFIC CONTROL AND PROTECTION FOR SIDE ROADS, INTERSECTIONS, AND DRIVEWAYS

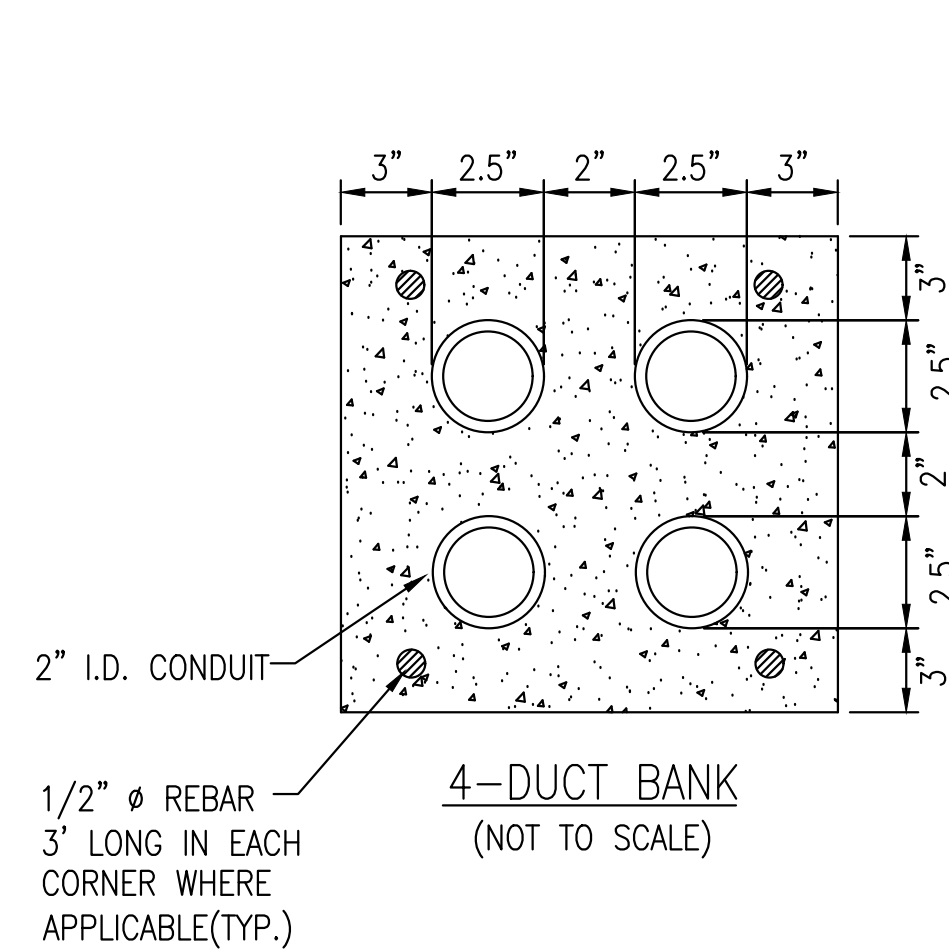
FILE NAME/LOCATION: P:\2022\20220329\00\DRAWINGS\CURRENT DRAWING FILES\CAD SHEETS\20220329\10-TF8-5050-01-0-GENERAL NOTES_S00_INDEXING
 DATE PRINTED: 4/18/2023 2:45 PM
 PRINTED BY: KRISTOFFER SAUWERA
 PLOT DEVICE DRIVER: ELOT STYLE TABLE_C1B
 PLOT DEVICE: HP DesignJet 5000



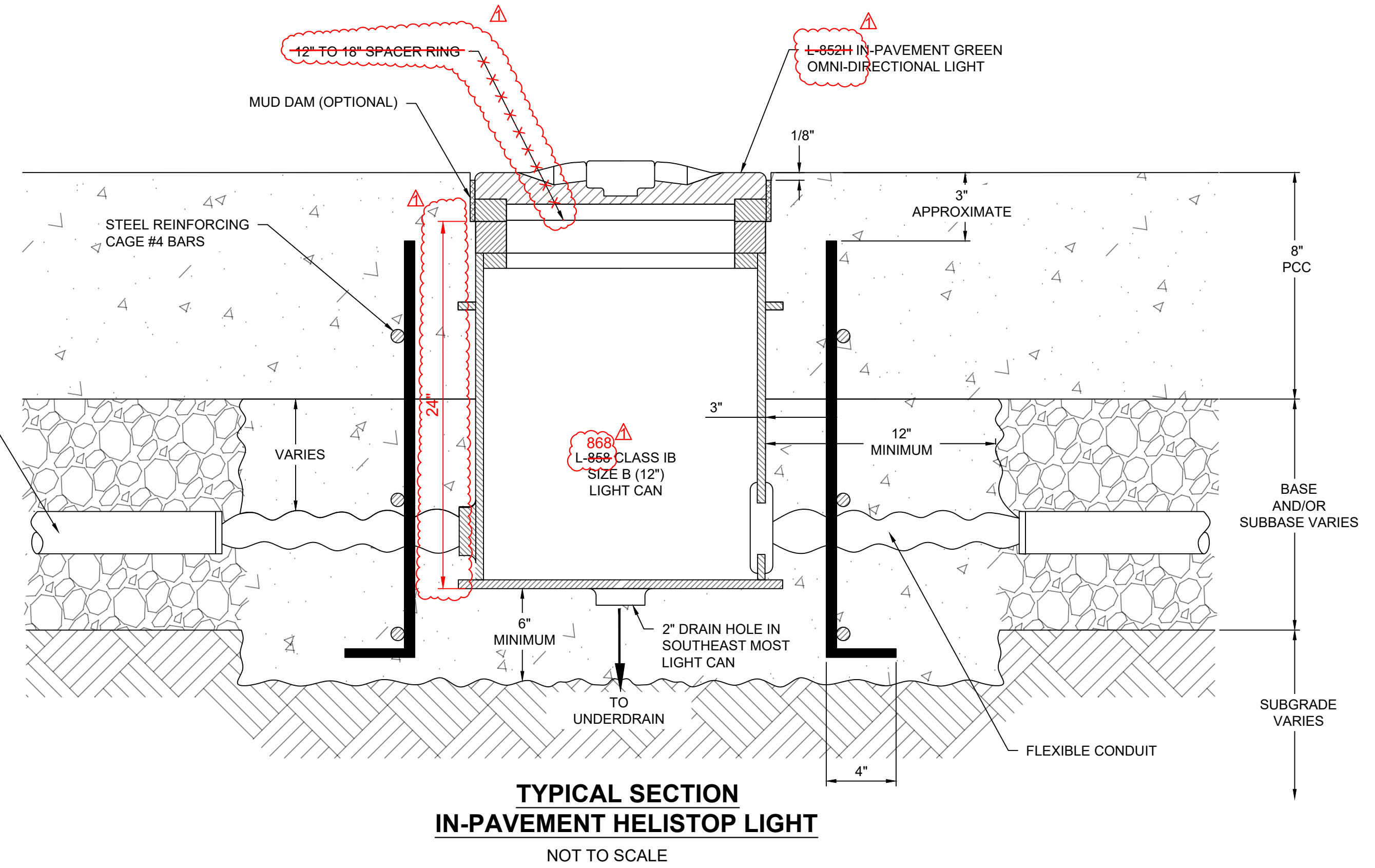
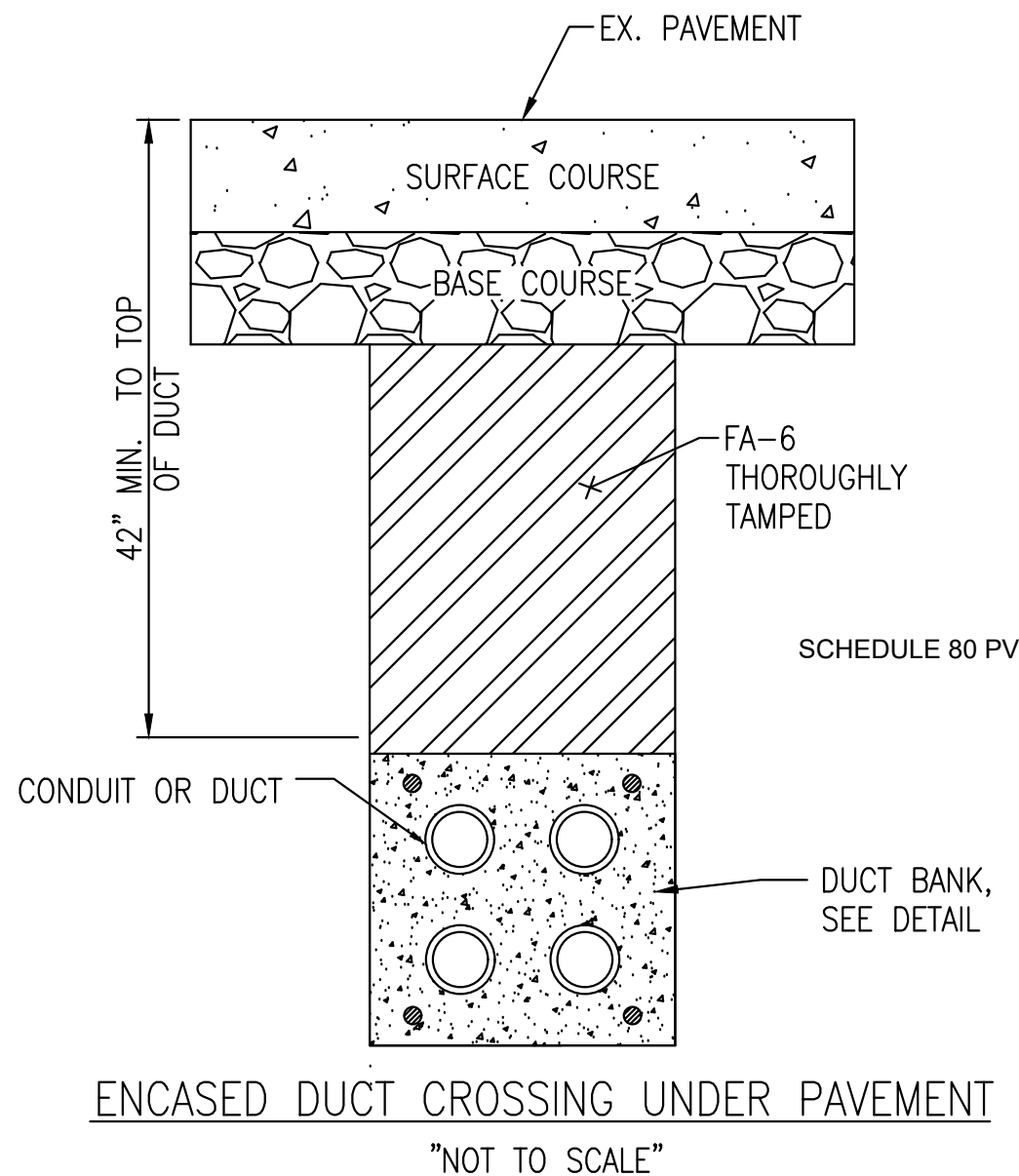
- NOTES**
1. PROPOSED RACK SHALL BE B-LINE OR UNISTRUT OR EQUAL. CONTRACTOR SHALL CONFIRM DIMENSIONS WITH PROPOSED AND FUTURE EQUIPMENT DIMENSIONS. PROVIDE DETAILED SHOP DRAWING FOR REVIEW BY OWNER AND ENGINEER. PROVIDE CONCRETE FOUNDATIONS AS SHOWN.
 2. PROPOSED 120/240V, 1-PHASE, 3-WIRE, 24 CIRCUIT, NEMA 3R, LOCKABLE POWER PANEL "LP-1" WITH UTILITY METER BASE AND UTILITY METER ON BACK SIDE. PANEL SHALL HAVE 100A, 2-POLE MAIN BREAKER AND SHALL BE SERVICE ENTRANCE RATED. PROVIDE 40A, 2-POLE CIRCUIT BREAKER FOR HELIPORT LIGHTS AND 20A, 1-POLE CIRCUIT BREAKER FOR RADIO CONTROLLER.
 3. PROPOSED L-854 AIR-TO-GROUND RADIO CONTROLLER. RADIO CONTROLLER SHALL BE ADB-SAFEGATE MODEL RCE-1112 (OR EQUAL). CONTROLLER SHALL COME COMPLETE WITH UNIT MOUNTED ANTENNA FOR SINGLE STEP CONTROL OF PROPOSED HELISTOP LIGHTING.
 4. SPACE FOR FUTURE 120/240V, 1-PHASE, 3-WIRE, 42 CIRCUIT, 400A, NEMA 3R, LOCKABLE POWER PANEL AND 400A CT CABINET/METER ON BACK SIDE.
 5. PROPOSED 3-2" CONDUITS FROM SOUTHEAST HANDHOLE: CAP CONDUITS 12" ABOVE FINISH GRADE
 - 1-2" SPARE
 - 1-2" EAST GATE POWER AND CONTROLS
 - 1-2" WEST GATE POWER AND CONTROLS
 6. PROPOSED 2 #6, 1 #8 GND. INN 2" C TO HELISTOP LIGHTING.
 7. PROPOSED 3 #2 XHHW IN 4" C FROM UTILITY TRANSFORMER
 8. PROPOSED 1 #6 GND. TO 3/4" X10' LONG COPPER CLAD GROUND ROD. USE EXOTHERMIC CONNECTION. (12" MIN. BURY)
 9. PROPOSED 2 #12, 1 #12 GND. IN 3/4" C FOR L-854 RADIO CONTROLLER POWER
 10. PROPOSED 2 #6, 1 #8 GND. IN 1" C FOR HELISTOP LIGHTING POWER.



PROPOSED POWER DISTRIBUTION AND CONTROLS RACK
NOT TO SCALE



- DUCT BANK NOTES:**
1. DIMENSIONS FOR CONCRETE COVERAGE AND SEPARATION BETWEEN DUCTS ARE MINIMUM.
 2. INCLUDE DUCT SPACERS AS MANUFACTURED BY UNDERGROUND DEVICES INC., OR APPROVED EQUAL TO MAINTAIN PROPER SEPARATION OF CONDUITS.
 3. DUCTS SHALL EXTEND FOR 3 FEET BEYOND ANY EXISTING OR PROPOSED PAVEMENT EDGE.



ADDENDUM A KS RH SM 4/18/23
No. Description By Chk. App. Date

HELISTOP AIRCRAFT PAVEMENT IMPROVEMENTS
IDA No: TF8-5050
CONTRACT NO. T1001

100% FINAL - 03/29/2023

DRAWING TITLE
ELECTRICAL DETAILS

SHEET NO.
SHEET 24 OF 30
APPROVED DRAWING NO.
SM
CHECKED
SM
DRAWN BY
KWS
C13.2

PLOT DEVICE DRIVER: E:\CADD\AutoCAD\Shared Resources\AEC\AEC.ctb
 T:\CADD\AutoCAD\Shared Resources\AEC\AEC.ctb
 FILENAME\LOCATION: P:\2023\20230329\00\DRAWINGS\CURRENT DRAWING FILES\CAD SHEETS\20230329\10-TF8-5050-013-ELECTRICAL\DETAILS.DWG
 PRINTED BY: KRISTOFFER SALVETERA
 DATE PRINTED: 4/18/2023 2:46 PM
 FILE SAVED: 4/18/2023 2:25 PM
 © 2007 Primera

ITEM 801014 / 801024

~~L-852H~~ IN-PAVEMENT MEDIUM INTENSITY LIGHT

DESCRIPTION

125-1.1 This item shall consist of heliport in-pavement lighting systems furnished and installed in accordance with this specification, the referenced specification, and the latest revision of the applicable FAA Advisory Circulars. The systems shall be installed at the location and in accordance with the dimensions, design, and details shown on the plans. This item shall include furnishing all equipment, materials, services, and incidentals necessary to place the systems in operation as completed units to the satisfaction of the Engineer

EQUIPMENT AND MATERIALS

125-2.1 GENERAL. Add the following:

D. The in-pavement lights shall be ~~FAA L-852H In-Pavement LED Medium Intensity-Heliport Perimeter Lights~~. FAA L-852T(L), green color, 12-inch diameter fixture for L-868 light base, omni-directional light pattern, with arctic option, with L-823 connectors.

125-2.8 LIGHT CANS. Add the following:

Light cans for the new base mounted in-pavement heliport perimeter lights shall be ~~FAA L-858, Class B, Size B (12")~~. FAA L-868 Class 1B, Size B (12-inch).

125-2.9 LIGHT LENS. Add the following:

Lens for the heliport perimeter lights shall be green.

METHOD OF MEASUREMENT

125-4.1 The quantity of lights to be paid for under this item shall be the number of each type installed as completed units in place, ready for operation, and accepted by the Engineer. In-Pavement Light Base (Empty) shall be paid by the number of in-pavement light cans installed.

BASIS OF PAYMENT

125-5.1 Payment will be made at the contract unit price for each completed light installed in place by the Contractor and accepted by the Engineer. Payment will be made at the contract unit price for empty in-pavement light base cans installed and accepted by the Engineer. This price shall be full compensation for furnishing all materials and for all preparation, assembly, and installation of these materials, and for all labor, equipment, tools, and incidentals necessary to complete this item.

Payment will be made under:

Item AR801014 – IN-PAVEMENT LIGHT BASE (EMPTY) – per each

Item AR801024 – ~~L825H~~ IN-PAVEMENT MEDIUM INTENSITY LIGHT – per each