

STATE OF ILLINOIS
 DEPARTMENT OF TRANSPORTATION
 DIVISION OF HIGHWAYS
**PLANS FOR PROPOSED
 HIGHWAY**

FAP ROUTE 303 (U.S. RTE. 14)
 SECTION 29R-T

**CULVERT, RETAINING WALLS REMOVAL (PARTIAL) AND REPLACEMENT
 AND ROADWAY WIDENING
 U.S. ROUTE 14 MOKELER CREEK TO N. OF IL. 173 & AT UPRR
 McHENRY COUNTY
 C-91-190-01**

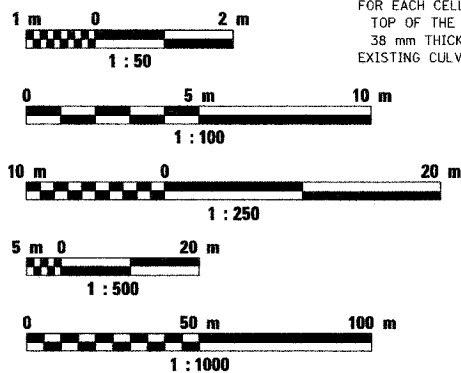
FOR INDEX OF SHEETS, SEE SHEET NO. 2

TRAFFIC DATA

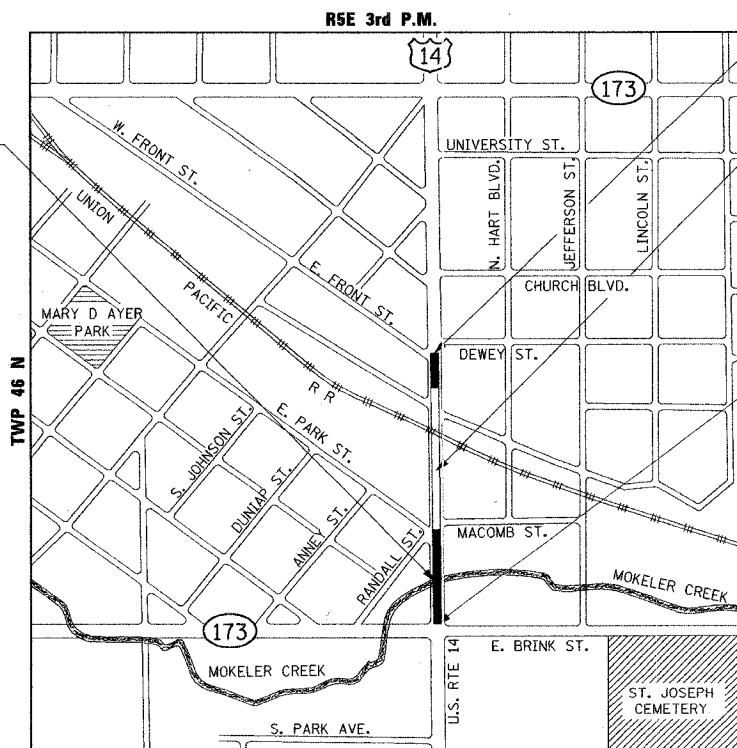
U.S. ROUTE 14 OVER MOKELER CREEK
 ADT (CURRENT) = 11,900 (1999)
 ADT (PROJECTED) = 16,065 (2021)
 SPEED LIMIT = 50 Km/h
 DESIGNATION = OTHER PRINCIPAL ARTERIAL

PLAN 1:500
 PROFILE HORIZ. 1:500
 PROFILE VERT. 1:50
 CROSS SECTIONS 1:100 HORIZ. 1:50 VERT.

METRIC RATIOS



EXISTING STRUCTURE (OLD) NO. 056-0048
 AND STRUCTURE (NEW) NO. 056-0076
 THE CULVERT CARRYING MOKELER CREEK
 (CENTER OF CULVERT STA. 0+955.00) HAS A
 LENGTH OF 17 m AND IS A TWO-CELL BOX CULVERT
 WITH A TOTAL WIDTH OF 6.8 m. THE DIMENSIONS
 FOR EACH CELL ARE 3 m x 1.5 m. THE ROADWAY ON
 TOP OF THE CULVERT HAS A BITUMINOUS OVERLAY
 38 mm THICK OVER 0.2 m THICK P.C.C. PAVEMENT.
 EXISTING CULVERT WILL BE REMOVED AND REPLACED
 WITH A FOUR-CELL BOX CULVERT.



IMPROVEMENT BEGINS
 STA. 0+643.40

EXISTING STRUCTURE NO. 056-0007
 THE BRIDGE OVER THE UNION PACIFIC RAILROAD
 (CENTER OF BRIDGE STA. 0+777.76) IS AN ELEVEN-
 SPAN BRIDGE WITH A TOTAL LENGTH OF 195.7 m
 AND SKEW ANGLE 30° ON THE NORTH HALF OF THE
 STRUCTURE. IT HAS A P.C.C. DECK SLAB ON STEEL
 GIRDERS, WITH A BITUMINOUS OVERLAY 38 mm THICK,
 SUPPORTED BY TEN PIERS AND TWO CLOSED ABUTMENTS.
 THIS BRIDGE IS OMITTED UNDER THIS CONTRACT.
 R.C.C. RETAINING WALLS ARE LOCATED AT ALL FOUR
 QUADRANTS OF THIS BRIDGE. THE EXISTING RETAINING
 WALLS WILL BE PARTIALLY REMOVED.
 NEW SOLDIER PILE (WITH CONC. FACING) RETAINING
 WALLS AT ALL FOUR QUADRANTS WILL BE BUILT.

IMPROVEMENT ENDS
 STA. 1+026.98



ILLINOIS PROFESSIONAL NO. 062-055430
 EXPIRES 11/30/05

PLANS PREPARED BY: SOODAN & ASSOCIATES, INC.
 100 NORTH LASALLE ST., SUITE 1800
 CHICAGO, ILLINOIS 60602

FULL SIZE PLANS HAVE BEEN PREPARED USING STANDARD
 ENGINEERING SCALES. REDUCED SIZED PLANS WILL NOT
 CONFORM TO STANDARD SCALES. IN MAKING MEASUREMENTS
 ON REDUCED PLANS, THE ABOVE SCALES MAY BE USED.

J.U.L.I.E.
 JOINT UTILITY LOCATION INFORMATION FOR EXCAVATION
 1-800-892-0123

CONTRACT NO. 62202

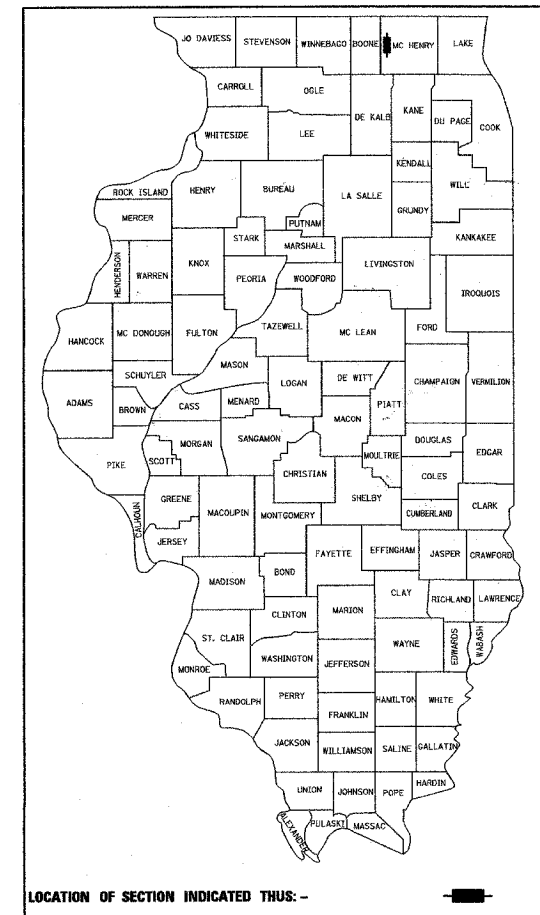
CHEMUNG TOWNSHIP
 LOCATION MAP
 SCALE: 1:5000
 GROSS LENGTH OF PROJECT = 383.58 METERS
 NET LENGTH OF PROJECT = 187.90 METERS

F.A.P. RTE.	SECTION	COUNTY	TOTAL SHEETS	SHEET NO.
303	29R-T	McHENRY	88	1

62202

73
 = 91 total sheets

D-91-190-01



LOCATION OF SECTION INDICATED THIS: -

STATE OF ILLINOIS
 DEPARTMENT OF TRANSPORTATION
 DIVISION OF HIGHWAYS

SUBMITTED February 4, 2005
 Denis O'Keefe / AP DISTRICT ENGINEER

March 25, 2005
 Mike Hene / D ENGINEER OF DESIGN AND ENVIRONMENT

March 25, 2005
 Victor Maden / D DIRECTOR, DIVISION OF HIGHWAYS

**PRINTED BY THE AUTHORITY
 OF THE STATE OF ILLINOIS**

IDOT PROJECT ENGINEER RICK YOUNG / JOSE DOMINGUEZ, DISTRICT 1, SCHAUMBURG (847) 705 4232