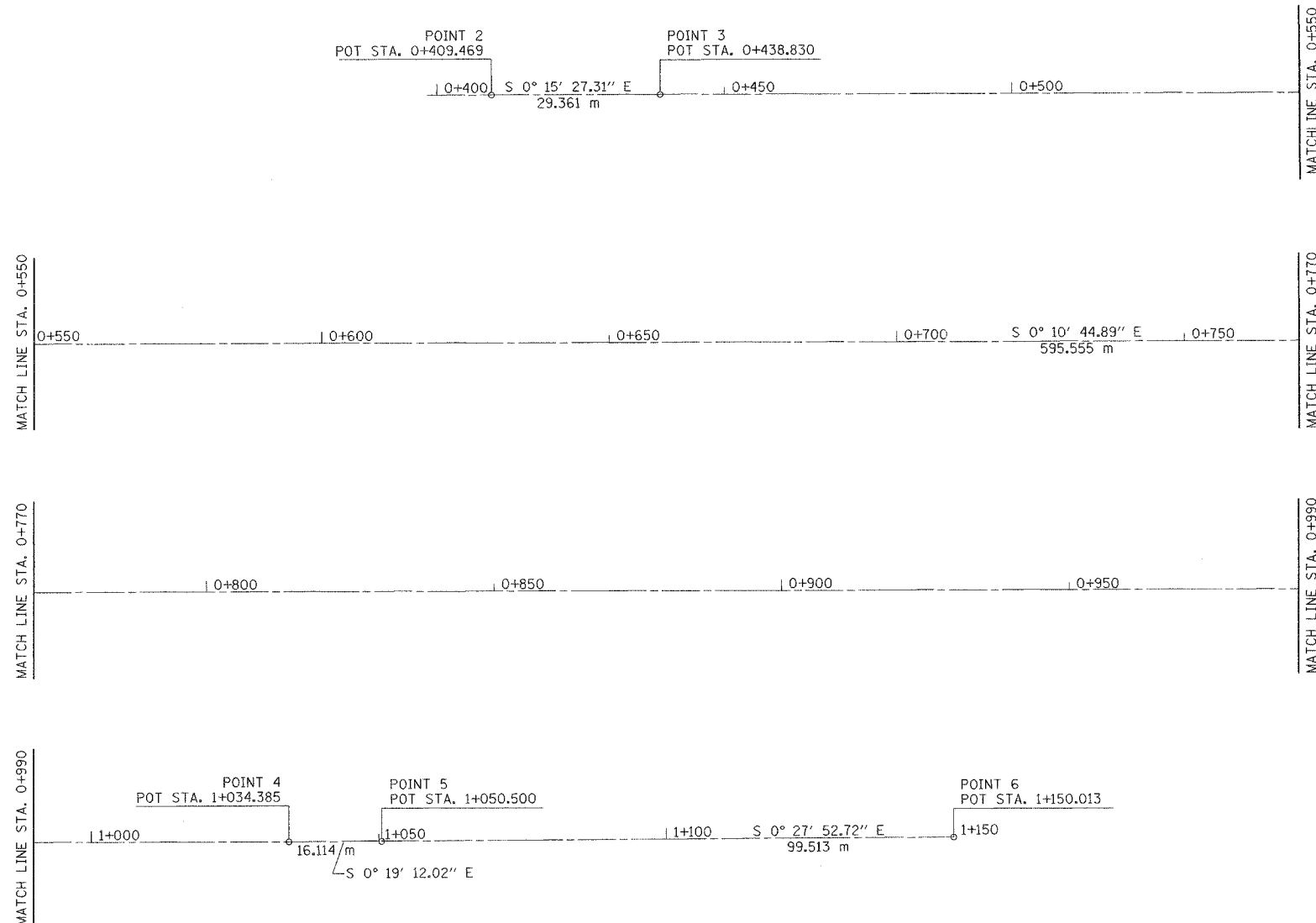


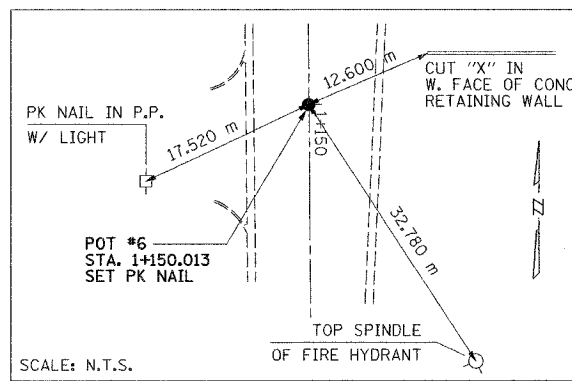
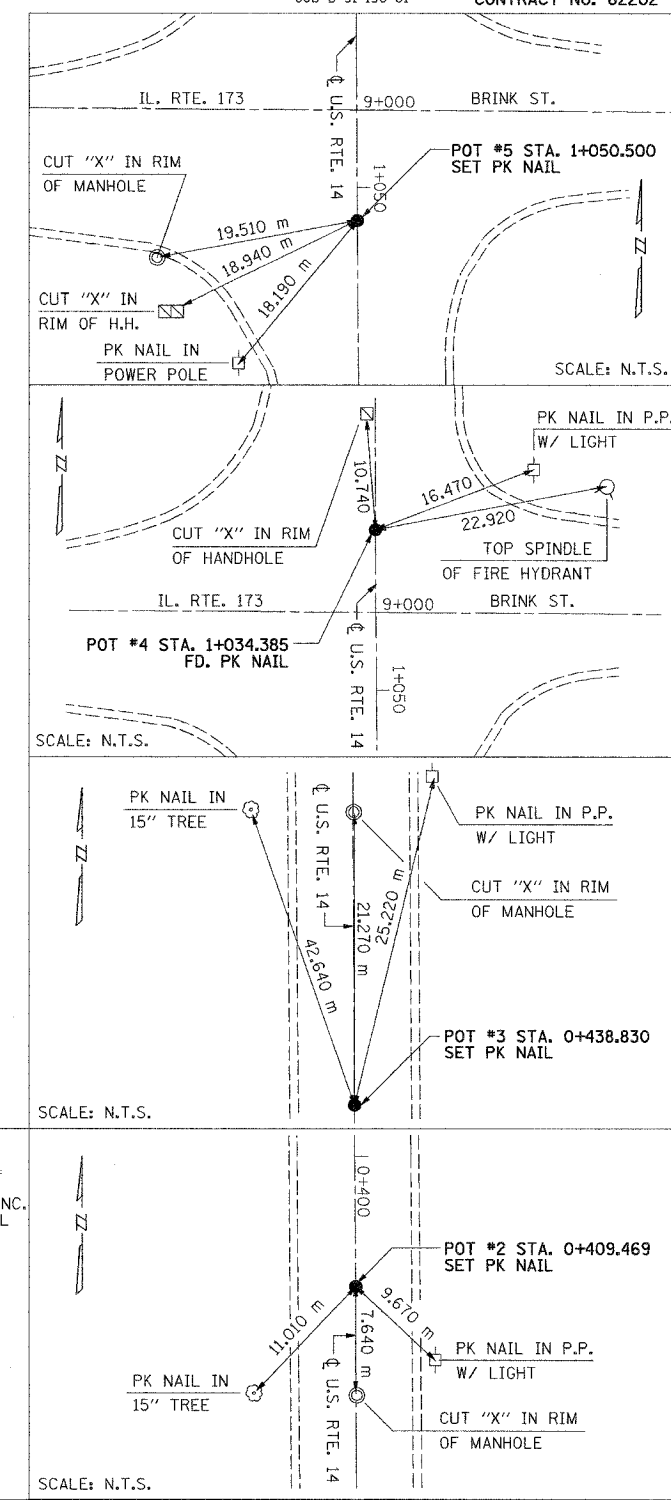
F.A.P. RTE.	SECTION	COUNTY	TOTAL SHEETS	SHEET NO.
303	29R-T	McHENRY	88	13
STA. 0+113.50			TO STA. 1+150.01	
FED. ROAD DIST. NO. 1			ILLINOIS FED. AID PROJECT	
JOB D-91-190-01			CONTRACT NO. 62202	



ALIGNMENT COORDINATES

POINT/ CURVE NAME	STATION (METERS)	NORTHING (METERS)	EASTING (METERS)
POINT 1	STA. 0+113.504	639132.0840	276926.0520
POINT 2	STA. 0+409.469	638836.1240	276927.8000
POINT 3	STA. 0+438.830	638806.7630	276927.9320
POINT 4	STA. 1+034.385	638211.2110	276929.7940
POINT 5	STA. 1+050.500	638195.0970	276929.8840
POINT 6	STA. 1+150.013	638095.5870	276930.6910

- B.M. # 1. □ AT HARVARD, ONE BLOCK E. OF U.S. HIGHWAY 14 ON STATE HIGHWAY 173, 14 m S., 11.6 m W. OF, AND 0.52 m HIGHER THAN CENTER OF CROSS STREETS (JUNCTION N. HART AND E. DIGGINS), 2.9 m S. AND 0.46 m W. OF NE. CORNER GRADE SCHOOL PARKING LOT, IN CONCRETE POST, ALUMINUM TABLET STAMPED "51 A 1923 966" PAINTED R1 "966.3" (TABLET MUTILATED, DESIGNATION RE-STAMPED) ELEV. =294.508
- B.M. # 2. □ REFERENCE MARK, 91.44 m S. OF BM, 8.53 m N. AND 10.06 m W. OF CENTER OF CROSS STREETS (N. HART AND E. UNIVERSITY), AT SE. CORNER GRADE SCHOOL YARD, ON CONCRETE SIDEWALK (1.68 m W. OF SE. CORNER), A CHISELED SQUARE, PAINTED "RM" ELEV. =294.312
- B.M. # 3. □ UE 51 A-A, 804.67 m S. OF BM, AT JUNCTION U.S. HWY. 14 AND STATE HWY. 173 W., JUST S. OF HWY. OVERPASS OVER RR., NEAR NW. CORNER OF ADMIRAL PLANT PARKING LOT, 11.28 m N., 11.28 m E., AND 0.18 m HIGHER THAN CENTER OF T-RD. W., 8.23 m N. OF E. BRINK ST., IN BASE OF SW SIDE OF POWER POLE, PAINTED "UE 930.2" ELEV. =283.507
- B.M. # 4. □ UE 51 A-B, 1.689 km. S. OF BM, AT JUNCTION U.S. HWY. 14 AND E.-W. BLACKTOP RD. (McGUIRE RD.-AIRPORT RD.), 7.62 m S., 12.80 m E. OF, AND 0.73 m LOWER THAN CENTER OF CROSSROADS, ON S. END CORRUGATED STEEL CULVERT, A PUNCHED HOLE, PAINTED "UE 926.5" ELEV. =282.379



REVISIONS	
NAME	DATE

ILLINOIS DEPARTMENT OF TRANSPORTATION
US 14 - MOKELER CREEK TO N. OF
IL. 173 AND AT UPRR
ALIGNMENT, TIES AND BENCHMARKS
SCALE: 1:500
DATE FEBRUARY, 2005
DRAWN BY R.A.D.
CHECKED BY DR. SSJ

SOODAN & ASSOCIATES INC.
Architects, Engineers & Construction Consultants

I:\253-alignment_r1.sht 02/10/2005 08:33:46 PM