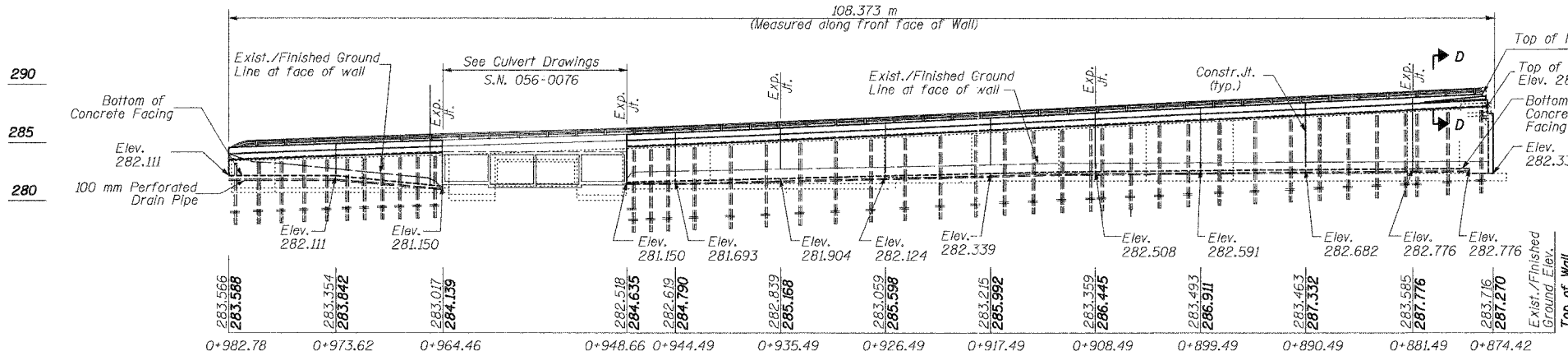


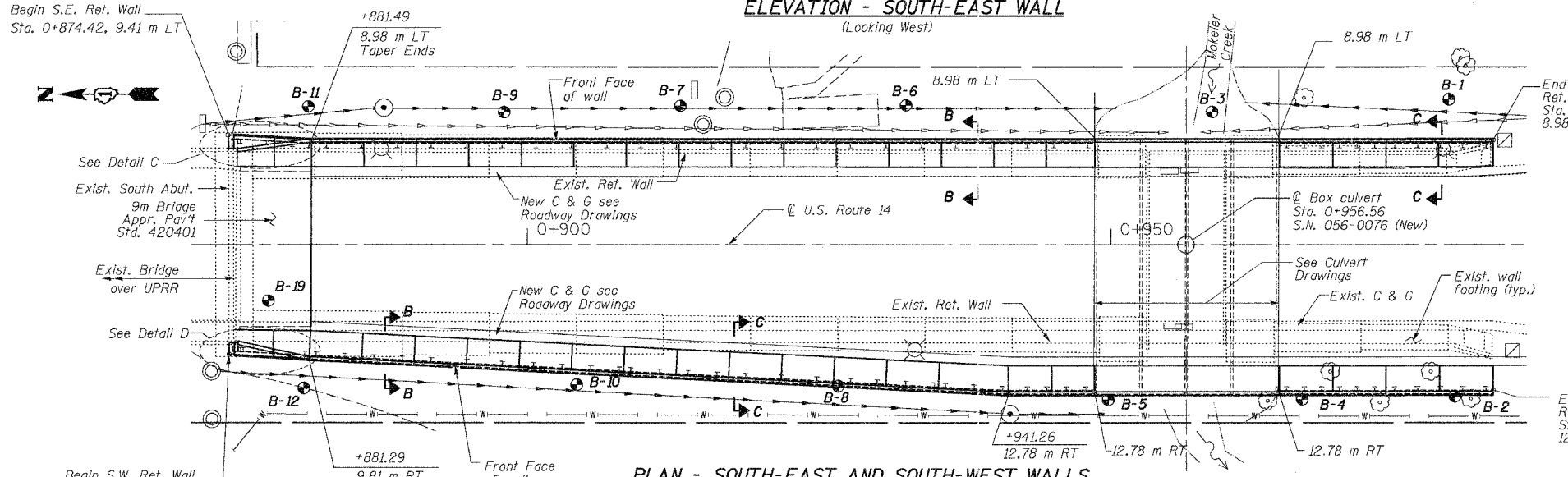
STATE OF ILLINOIS
DEPARTMENT OF TRANSPORTATION

CONTRACT NO. 62202

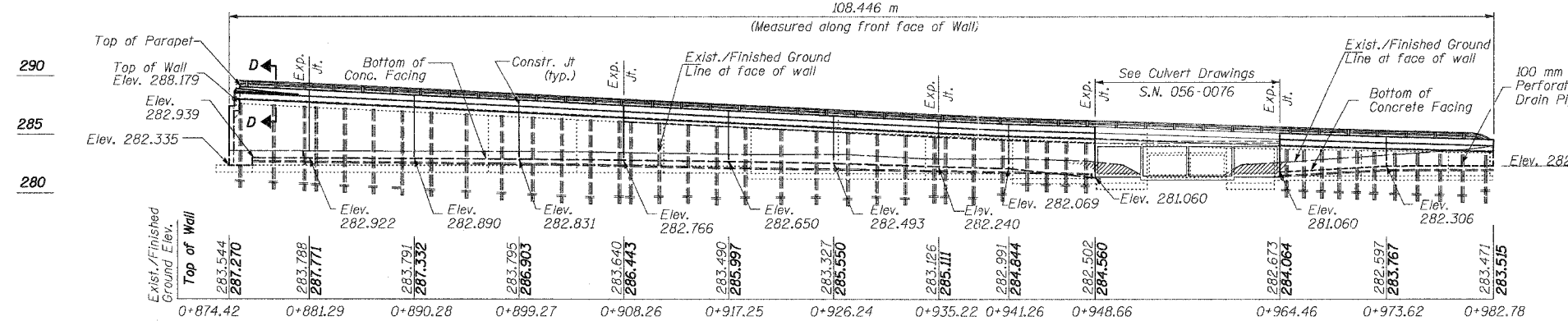
ROUTE NO.	SECTION	COUNTY	TOTAL SHEETS	SHEET NO.
U.S. 14	29R-T	McHENRY	88	41
F.A.P. 383				
FED. ROAD DIST. NO. 1				



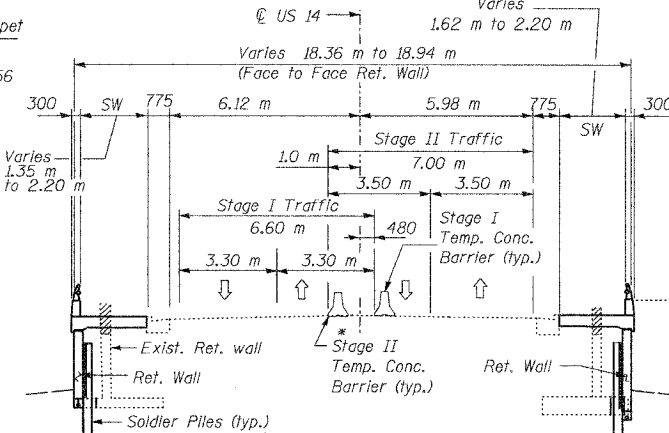
ELEVATION - SOUTH-EAST WALL
(Looking West)



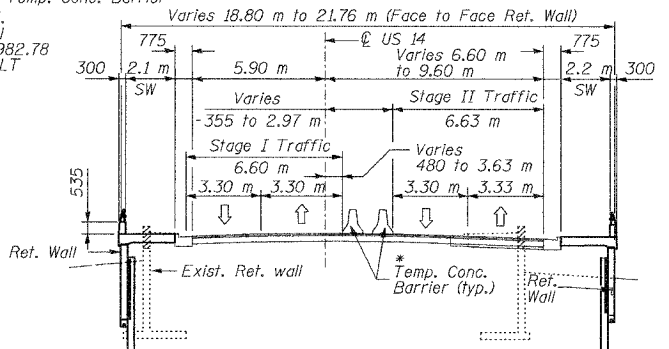
PLAN - SOUTH-EAST AND SOUTH-WEST WALLS



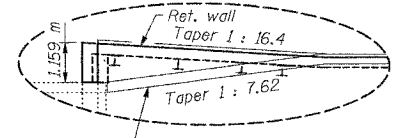
ELEVATION - SOUTH-WEST WALL
(Looking East)



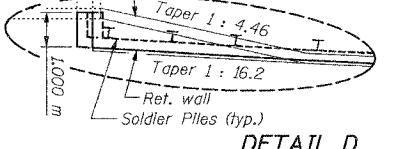
**** STAGE TRAFFIC - NORTH WALLS**
(Looking South)



**** STAGE TRAFFIC - SOUTH WALLS**
(Looking South)



DETAIL C



DETAIL D

DESIGNED	J.S./R.A.
CHECKED	H.T./N.S.
DRAWN	J.S./B.I.D.
CHECKED	H.T./M.R.

Soodan
Soodan & Associates, Inc.
Architect, Engineer & Construction Consultant
52 North LaSalle Street, Suite 2000
Chicago, Illinois 60602
Tel: 312/553-0003 Fax: 312/553-0006
E-Mail: transport@soodan.com

NOTES:

1. For wall sections see sheet S1-04
 2. For Legend see sheet S1-03
- ** For Stage Construction & Traffic see Roadway Plan & Profile

GENERAL PLAN & ELEVATION SOUTH WALLS
U.S. 14 RETAINING WALLS AT MOKELER CREEK
SECTION 29R-T
McHENRY COUNTY
STA. 0+647.90 TO STA. 0+982.78
AT STRUCTURE NO. 056-0007
Date: February, 2005 Scale: None