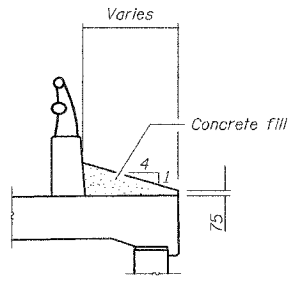


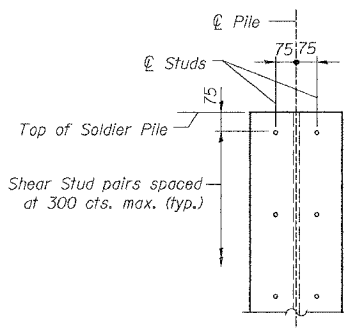
STATE OF ILLINOIS
DEPARTMENT OF TRANSPORTATION

ROUTE NO.	SECTION	COUNTY	SHEET	TOTAL
U.S. 14	29R-T	McHENRY	88	43
F.A.P. 303				
FED. ROAD DIST. NO. 1	BALANCE	FED. ROAD PROJECT		

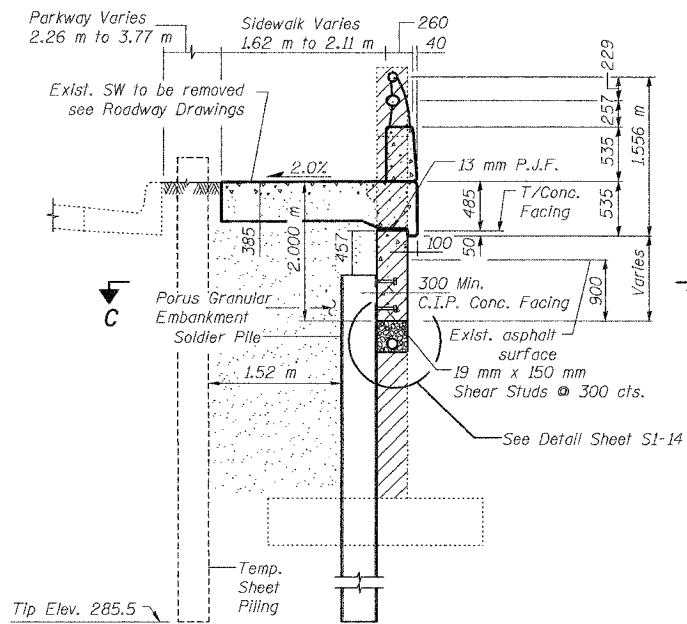
CONTRACT NO. 62202



SECTION D-D



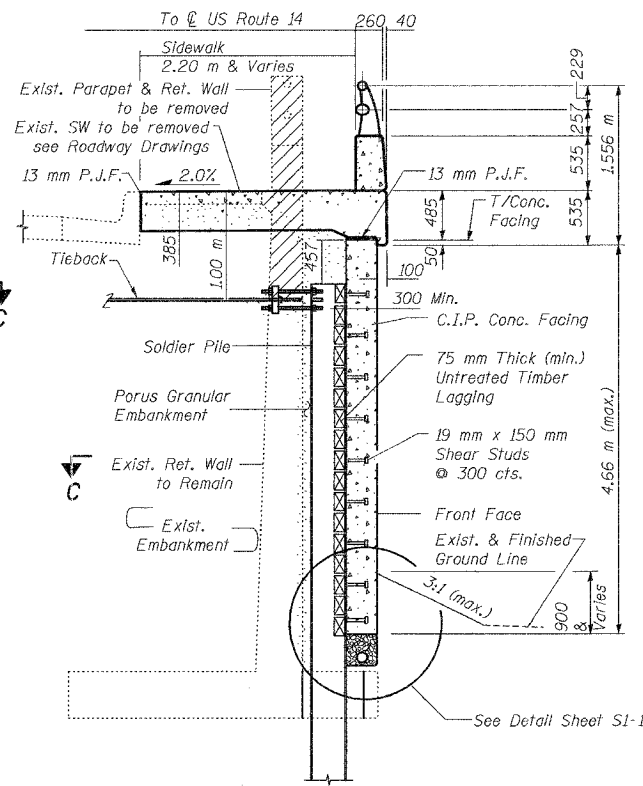
DETAIL OF SHEAR STUD
PLACEMENT ON SOLDIER PILE



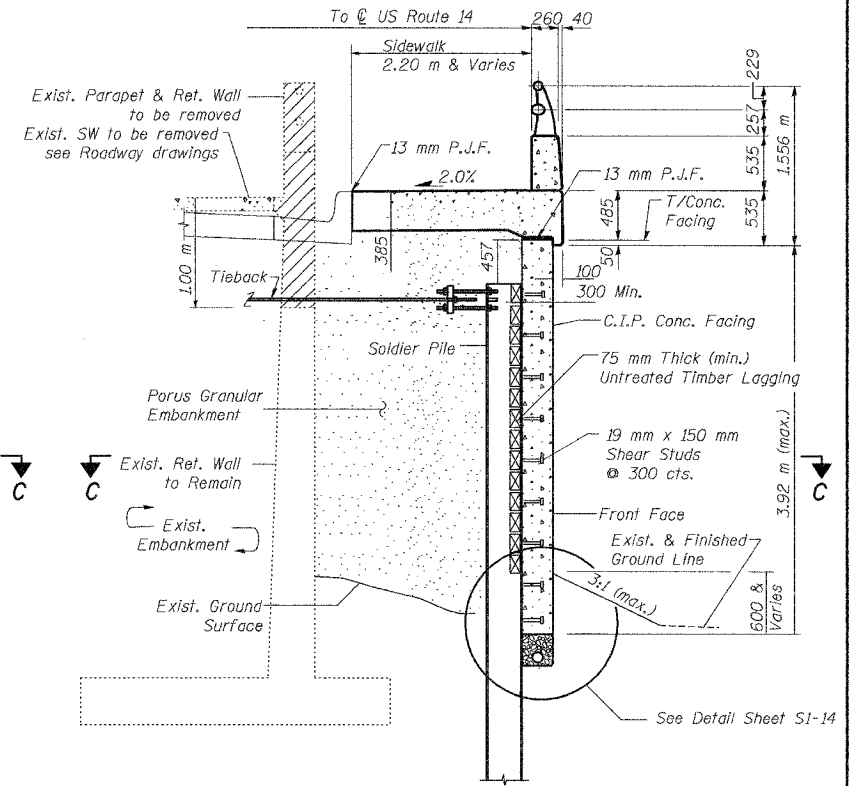
SECTION A-A

CONSTRUCTION SEQUENCE

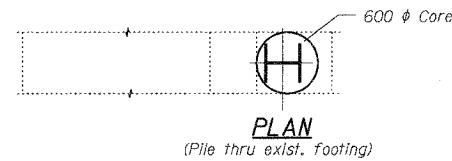
1. Drive Temporary Sheet Piling.
2. Remove portion of existing retaining wall.
3. Drive new Soldier Pile.
4. Construct wall facing.
5. Backfill and compact to 95%.



SECTION B-B

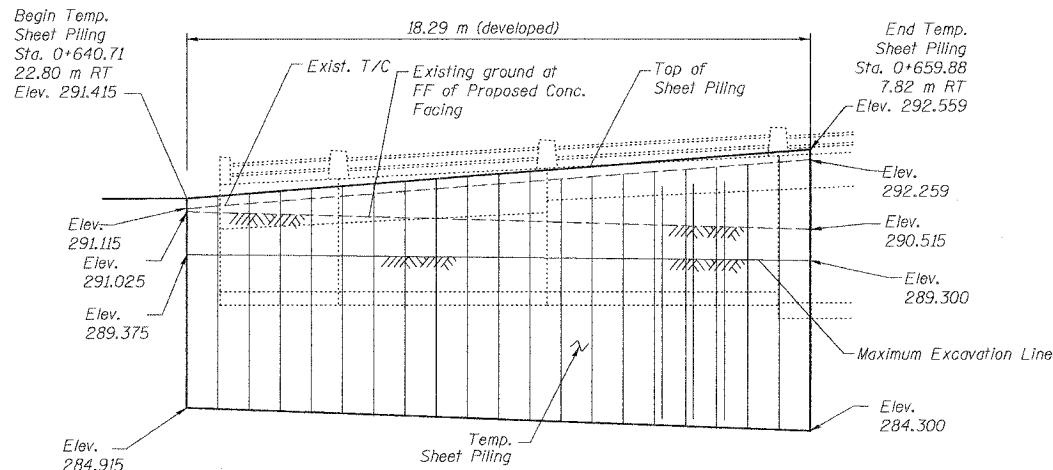


SECTION C-C



PLAN

(Pile thru exist. Footing)

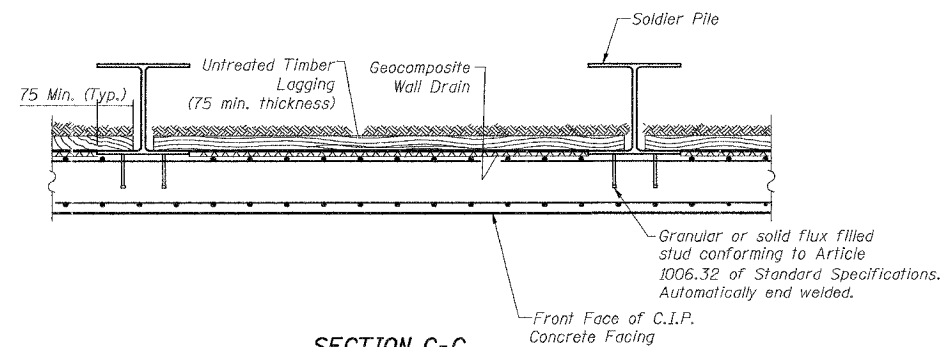


TEMPORARY SHEET PILING FOR STAGE 1 CONSTRUCTION

(Looking East)

(Developed)

Min. section modulus = $479.0 \times 10^3 \text{ mm}^3/\text{m}$



SECTION C-C
Typical

- Notes:
1. For tieback details see Sheet 14 of 37.
 2. All Shear Studs are 19 mm ϕ x 150 mm granular or Solid Flux filled headed automatically end welded to flange, spaced @ 300 cts. as shown. Spaced to miss the tieback connections when required.

Sheet S1-4 of 37

TYPICAL CROSS SECTIONS

U.S. 14 RETAINING WALLS
AT MOKELER CREEK
SECTION 29R-T
McHENRY COUNTY
STA. 0+647.90 TO STA. 0+982.78
AT STRUCTURE NO. 056-0007

Date: February, 2005 Scale: None

DESIGNED	J.S./R.A.
CHECKED	H.T./N.S.
DRAWN	J.S.
CHECKED	H.T./M.R.

Soodan

Soedon & Associates, Inc.
Civil/Structural Engineers & Construction Consultants
500 North LaSalle Street, Suite 3000
Chicago, Illinois 60602

Tel: 312/553-0003 Fax: 312/553-8006
E-Mail: transport@soodan.com