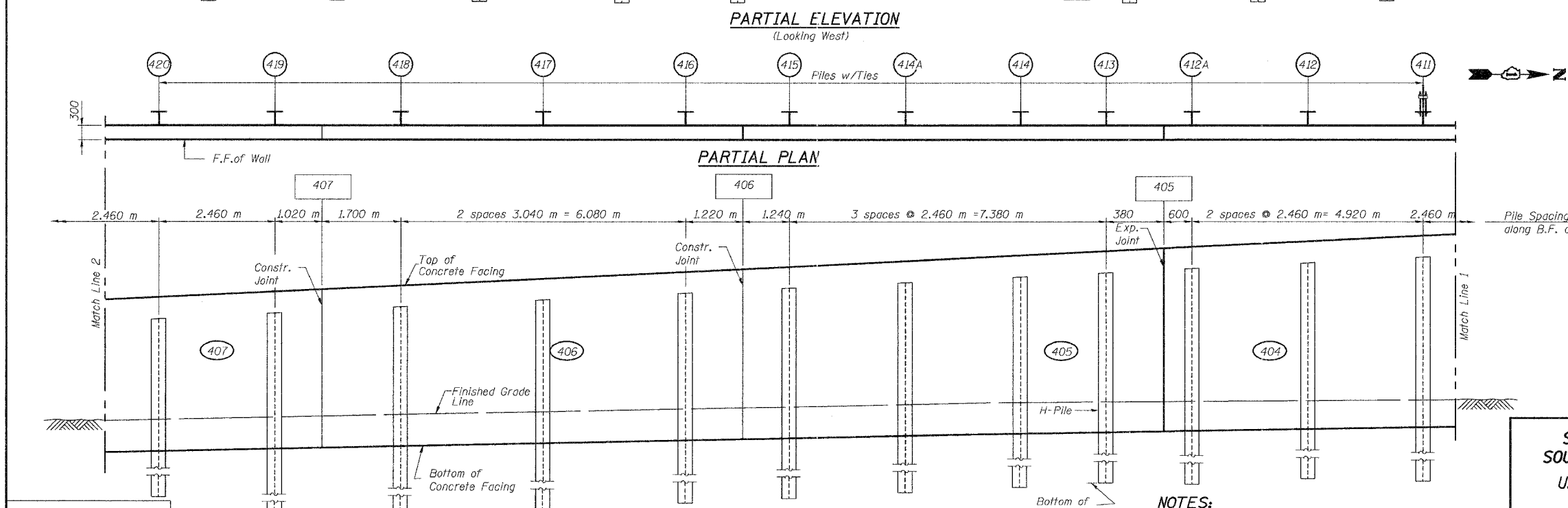
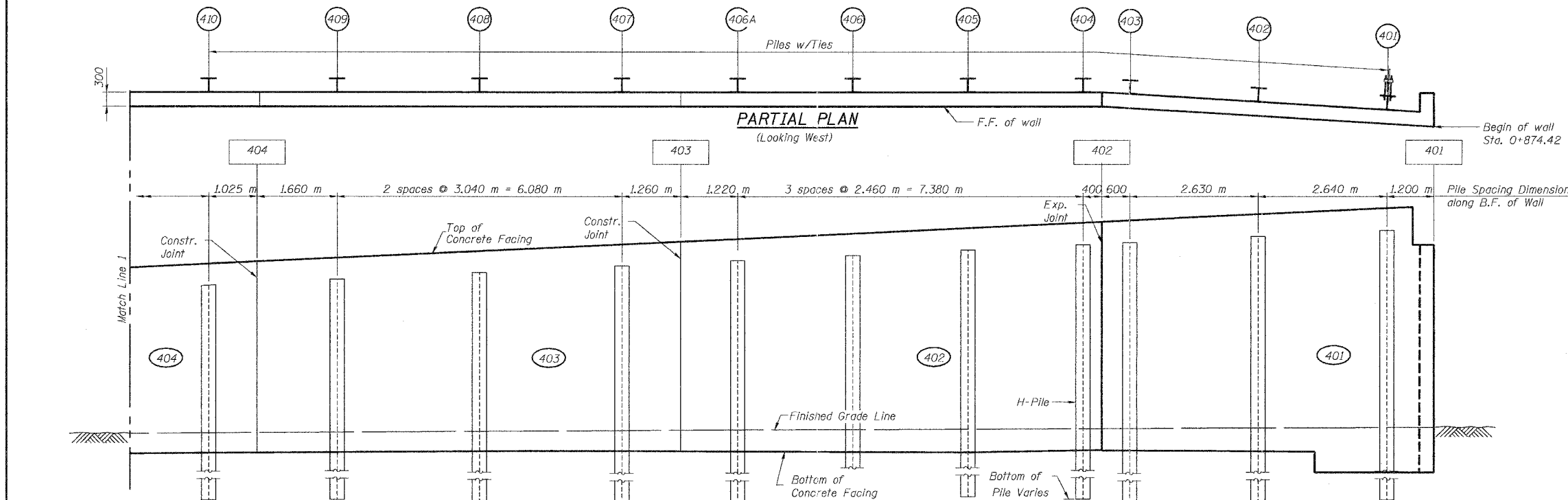


STATE OF ILLINOIS
DEPARTMENT OF TRANSPORTATION

PROJECT NO.	SECTION	COUNTY	SHEET	TOTAL SHEETS
P.A.P. 303	29R-T	McHENRY	88	49
FED. ROAD DIST. NO. 1	ILLINOIS	FED. AID PROJECT		

CONTRACT NO. 62202



DESIGNED J.S./R.A.
CHECKED H.T./N.S.
DRAWN J.S.
CHECKED H.T./M.R.

Soodan
Soodan & Associates, Inc.
Architects, Engineers & Construction Consultants
620 North Lincoln Street, Suite 800
Chicago, Illinois 60610
Tel: 312/553-0003 Fax: 312/553-8006
E-Mail: info@soodan.com

- NOTES:**
1. For Notes & Legends see sheet SI-3.
 2. For Pile Summary see sheet SI-11.
 3. All dimensions are in millimeters (mm) except as noted.

Sheet SI-10 of 37

**SOLDIER PILE LAYOUT
SOUTH-EAST WALL (1 OF 2)
U.S. 14 RETAINING WALLS
AT MOKELER CREEK
SECTION 29R-T
McHENRY COUNTY
STA. 0+647.90 TO STA. 0+982.78
AT STRUCTURE NO. 056-0007**

Date: February, 2005 Scale: None